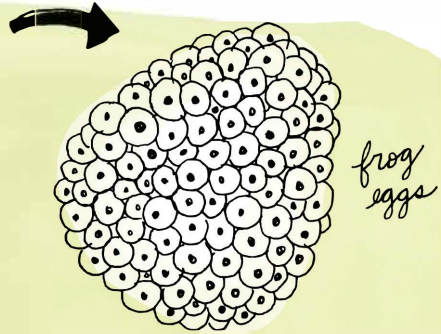
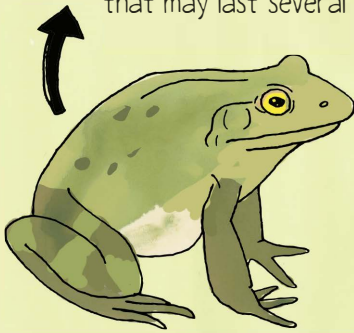


Following loud and elaborate courtship displays in the spring, frogs mate in the water in an embrace called amplexus that may last several days.

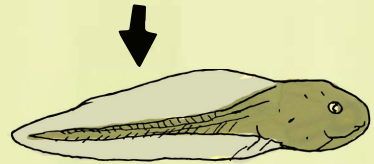


Female frogs lay sticky clusters of eggs in calm water.

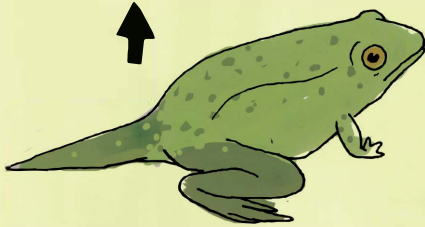


At 12 weeks, froglets have absorbed all but a stub of their tails.

Life Cycle of a Frog



Tadpoles emerge after a week or two.

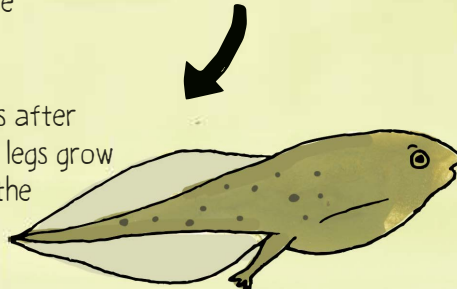


By 9 weeks old, they look like tiny frogs with long tails.

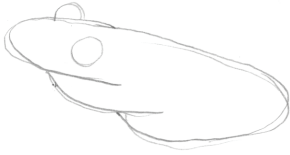
Tadpoles have rudimentary gills. They may stick themselves to plants until they are strong enough to swim and begin eating algae.



From 6 to 9 weeks after hatching, arms and legs grow elbows-first from the tadpole's sides.



HOW TO DRAW A FROG



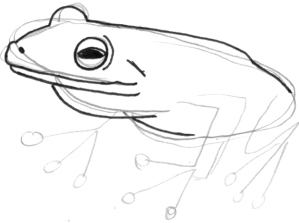
In pencil, sketch the basic outline of the body and the eyeballs.



Sketch in the outline of the legs and feet.



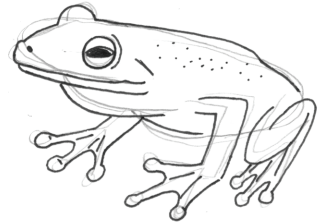
Ink the head. Add a pupil and a nostril.



Ink the rest of the body, tracing over the pencil outline with pen. Don't forget his throat.



Ink in the front legs and webbed feet.



Finish with the hind leg. Add dots across his back for skin detail.

