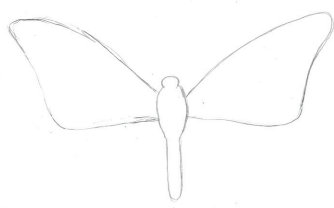
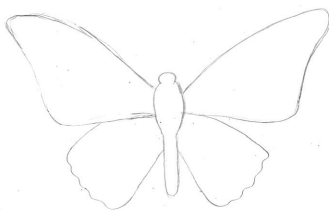


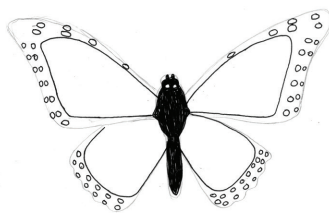
HOW TO DRAW A BUTTERFLY



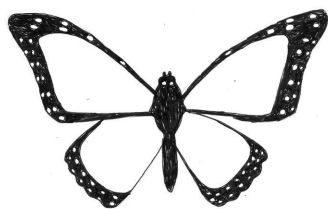
In pencil, sketch the outline of the abdomen and forewings. Try to make the wings as symmetrical as possible.



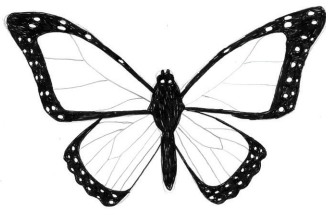
Sketch in the hindwings, which have bumpy lower edges.



In ink, color in the abdomen. Draw small pairs of circles along the outer edges of the wings. Also draw a line in the interior of each wing that mimics the wing outline.



Fill in with ink from the interior line to the exterior pencil outline, but do not fill in the circles.



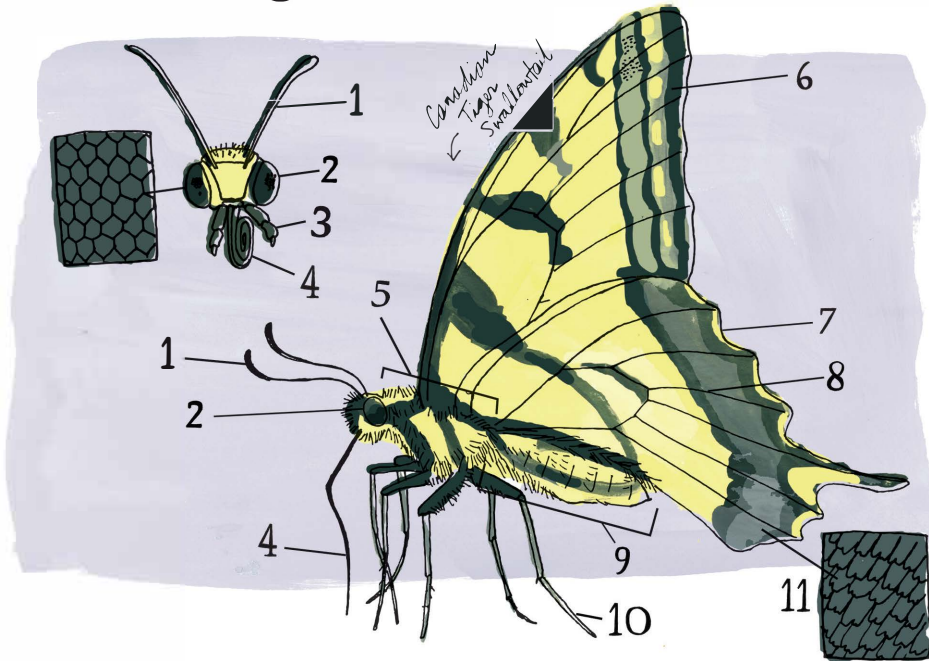
In pencil, sketch in the wing veins.



Now go over the wing veins in ink. Where the veins touch the interior line, round out the corners and fill them in a little darker. Finish by inking in antennae.



ANATOMY OF A BUTTERFLY



1. **antenna** - used as a form of radar and pheromone detection
2. **compound eye** - has up to 1,700 individual ommatidia (light receptors and lenses)
3. **palpus** - shields the eye from dust; covered in scent-detecting sensors
4. **proboscis** - like a long straw for feeding and drinking
5. **thorax** - three body segments that contain the flight muscles
6. **forewing**
7. **hindwing** } — two pairs of overlapping wings that flap and sometimes glide
8. **wing veins** - vary between each genus of butterfly; used in classification
9. **abdomen** - contains the digestive system, respiratory equipment, heart, and sex organs
10. **legs** - butterflies have three pairs
11. **scales** - wings are covered in tiny dustlike colored scales