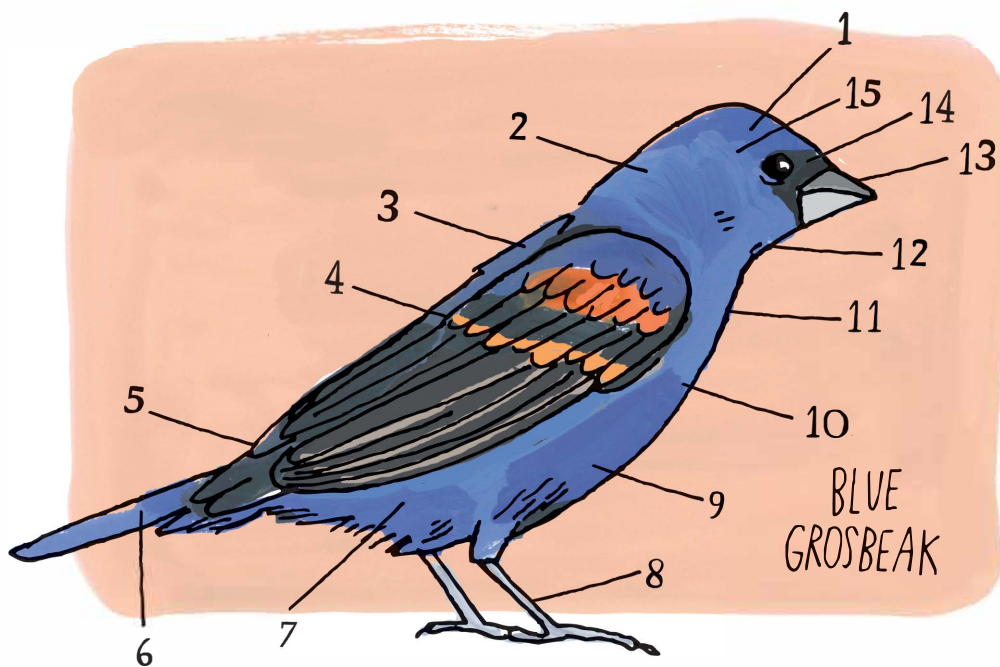
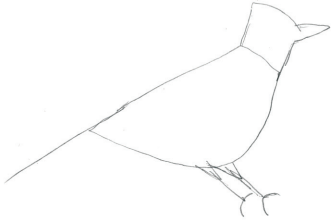


ANATOMY OF A BIRD

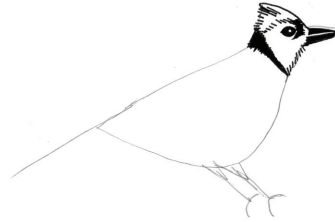


- | | |
|-------------|---|
| 1. crown | 9. side |
| 2. nape | 10. breast |
| 3. back | 11. throat |
| 4. wing bar | 12. chin |
| 5. rump | 13. bill |
| 6. tail | 14. lore (area between
eye and bill) |
| 7. flank | 15. ear patch |
| 8. tarsus | |

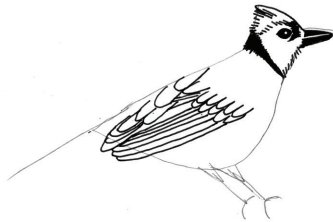
HOW TO DRAW A BIRD



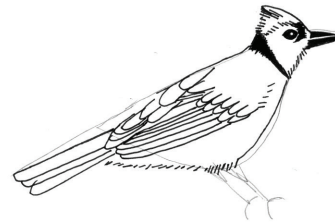
In pencil, sketch the outline of the bird's silhouette.



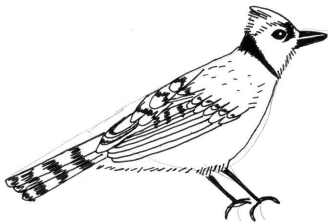
Begin inking the head, eye, and beak.



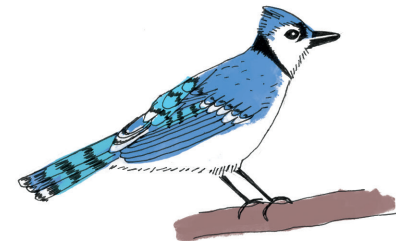
Now ink in the wings. Notice the varying feather sizes and shapes.



Ink the tail feathers and the underbelly of the bird, called the flank. Complete the outline of the body in ink.



Add some detail markings to the wings, and ink the legs and feet.



You can add a perch for her to stand on and some color.