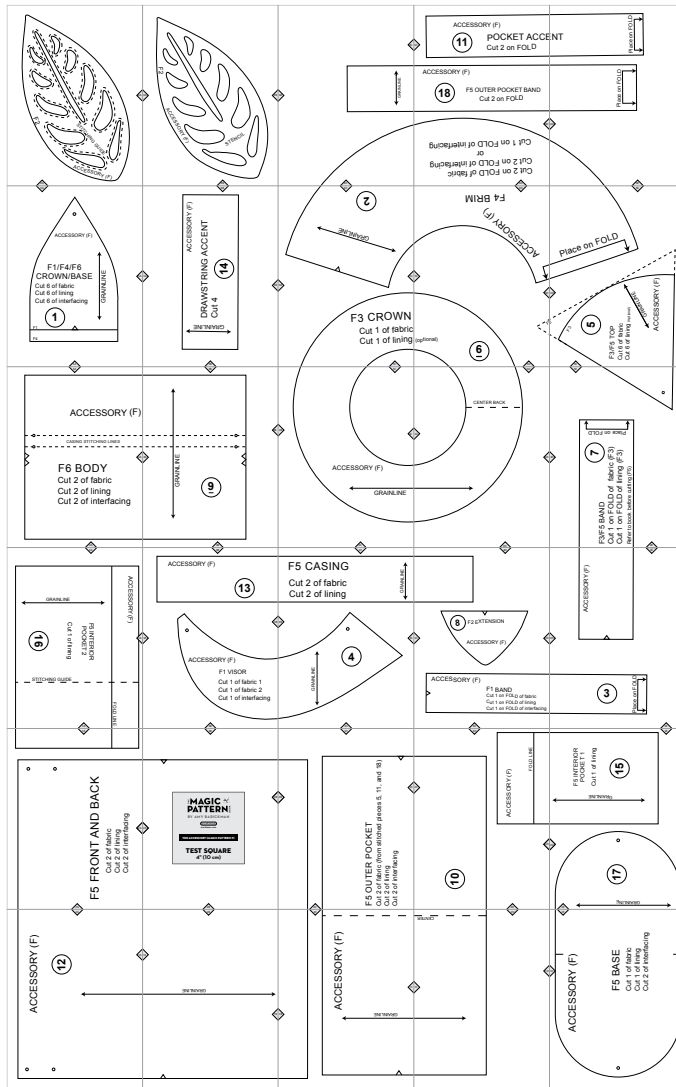


The Accessory (Magic Pattern F)

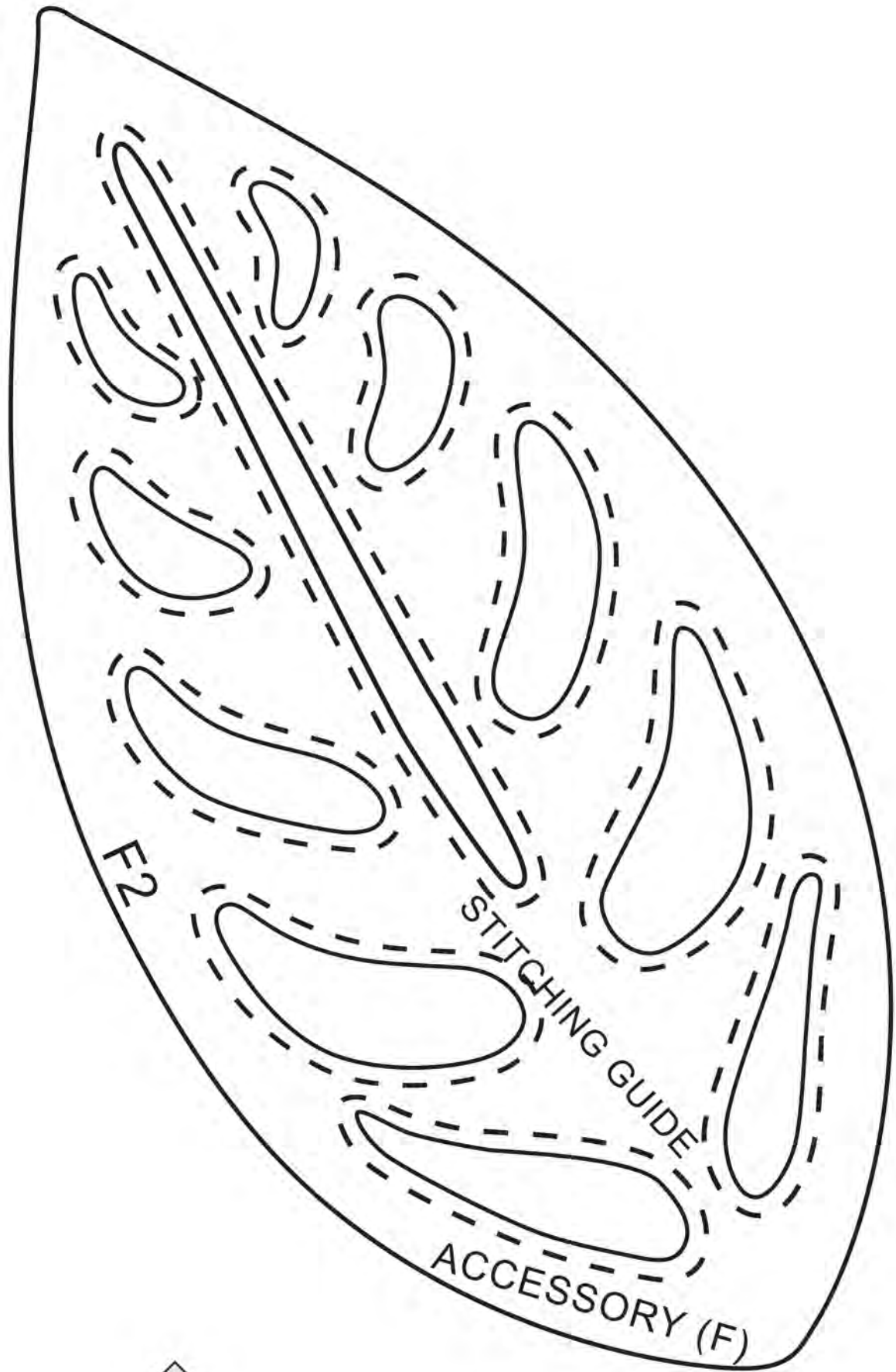


Copyright ©2014 by Amy Barickman

All rights reserved. Amy Barickman's patterns may be printed for personal use, but may not be otherwise reproduced—mechanically, electronically, or by any other means, including photocopying—without written permission of the publisher.

Sewing pattern designs for *The Magic Pattern Book* by Amy Barickman are intended for personal use only, and not as the basis for commercial manufacturing.

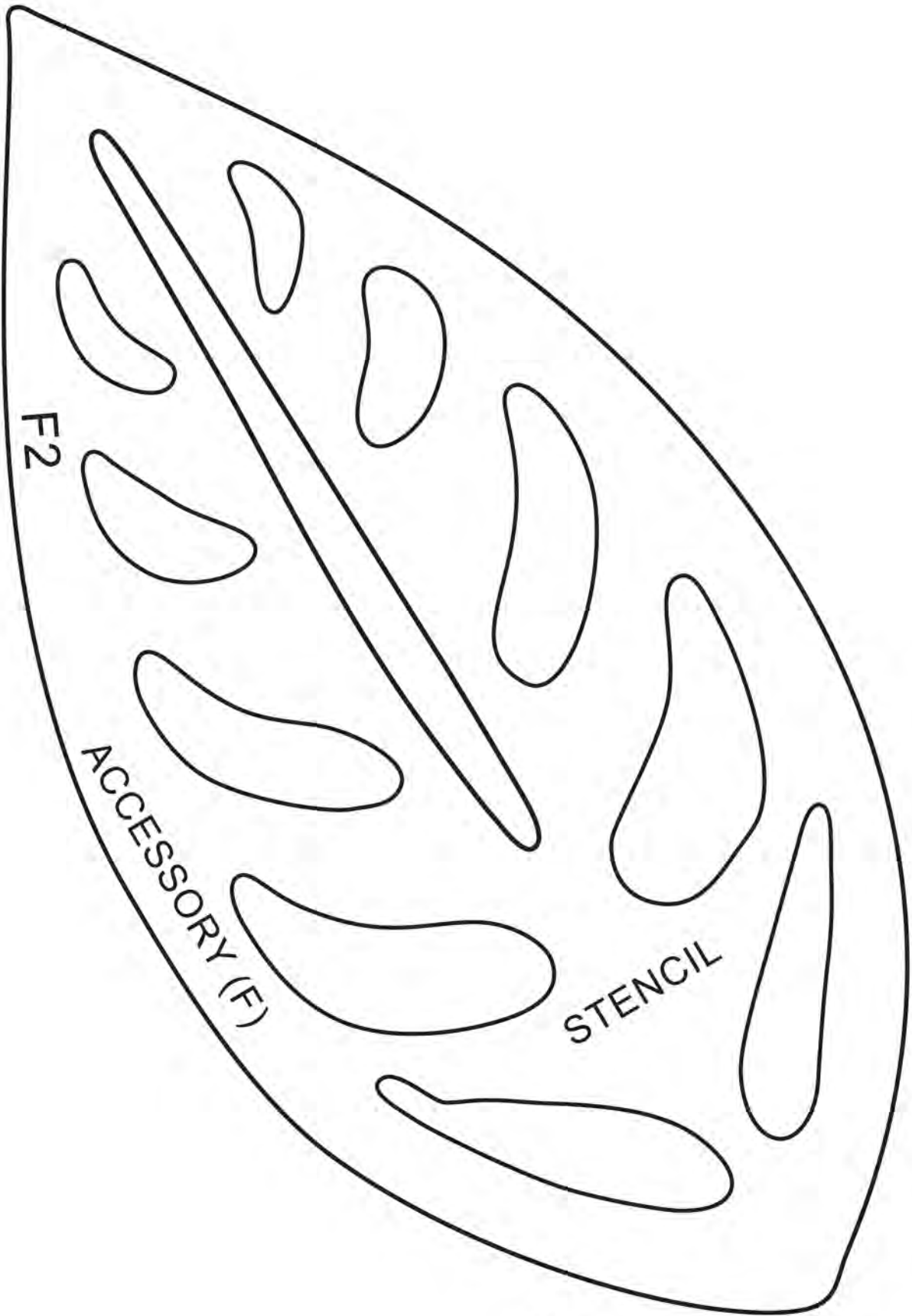
Workman Publishing, New York • workman.com



6A

6A

6A



F2

ACCESSORY (F)

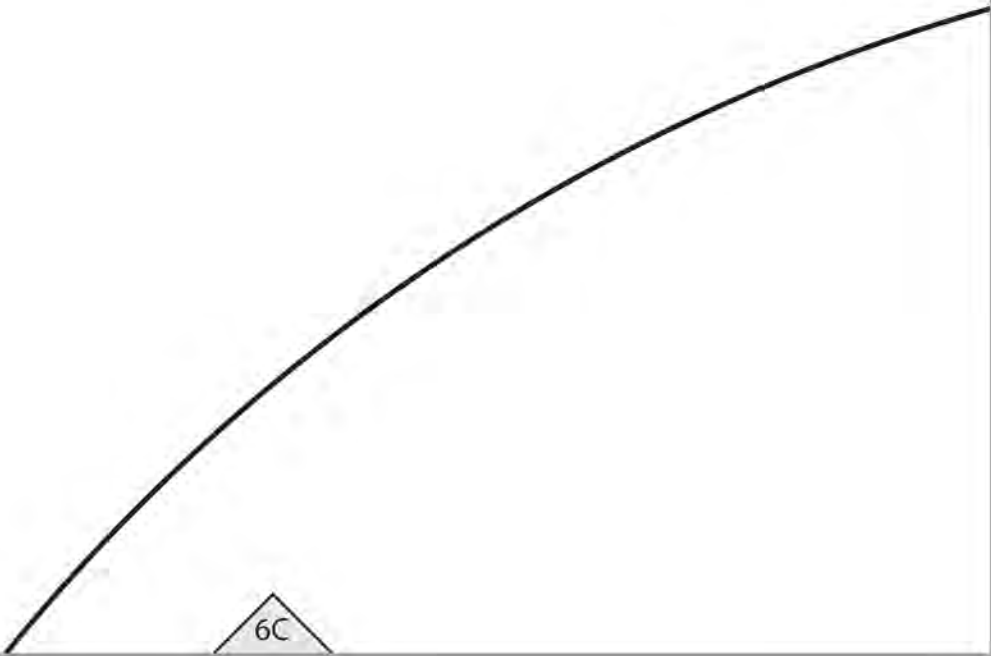
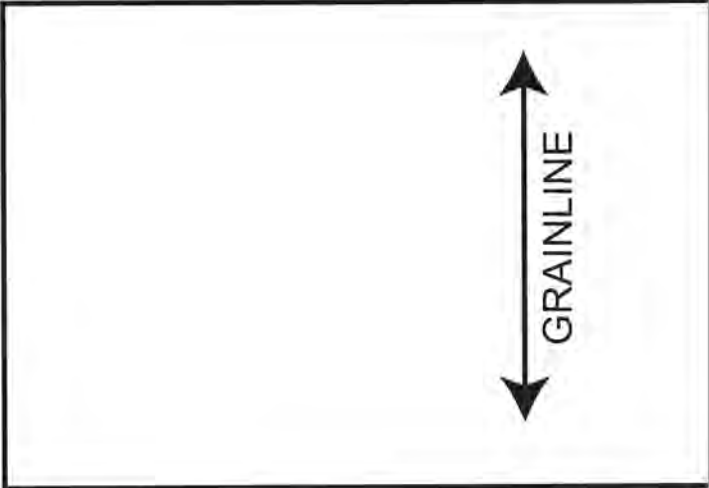
STENCIL

6B

6B

6B

6C



6C

ACCESSORY (F)

6C

11

POCKET ACCE
Cut 2 on FOLD

ACCESSORY (F)

18

F5 OUTER POCKET BAND
Cut 2 on FOLD

6D

Cut 1 on FOLD of interfacing

or

Cut 2 on FOLD of interfacing
Cut 2 on FOLD of fabric

6D

ENT

Place on FOLD

Place on FOLD

6D

6E

6A



ACCESSORY (F)

**F1/F4/F6
CROWN/BASE**

Cut 6 of fabric
Cut 6 of lining
Cut 6 of interfacing



F1

F4

5A

5A

6B

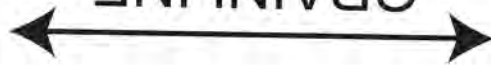
ACCESSORY (F)

DRAWSTRING ACCENT

Cut 4

14

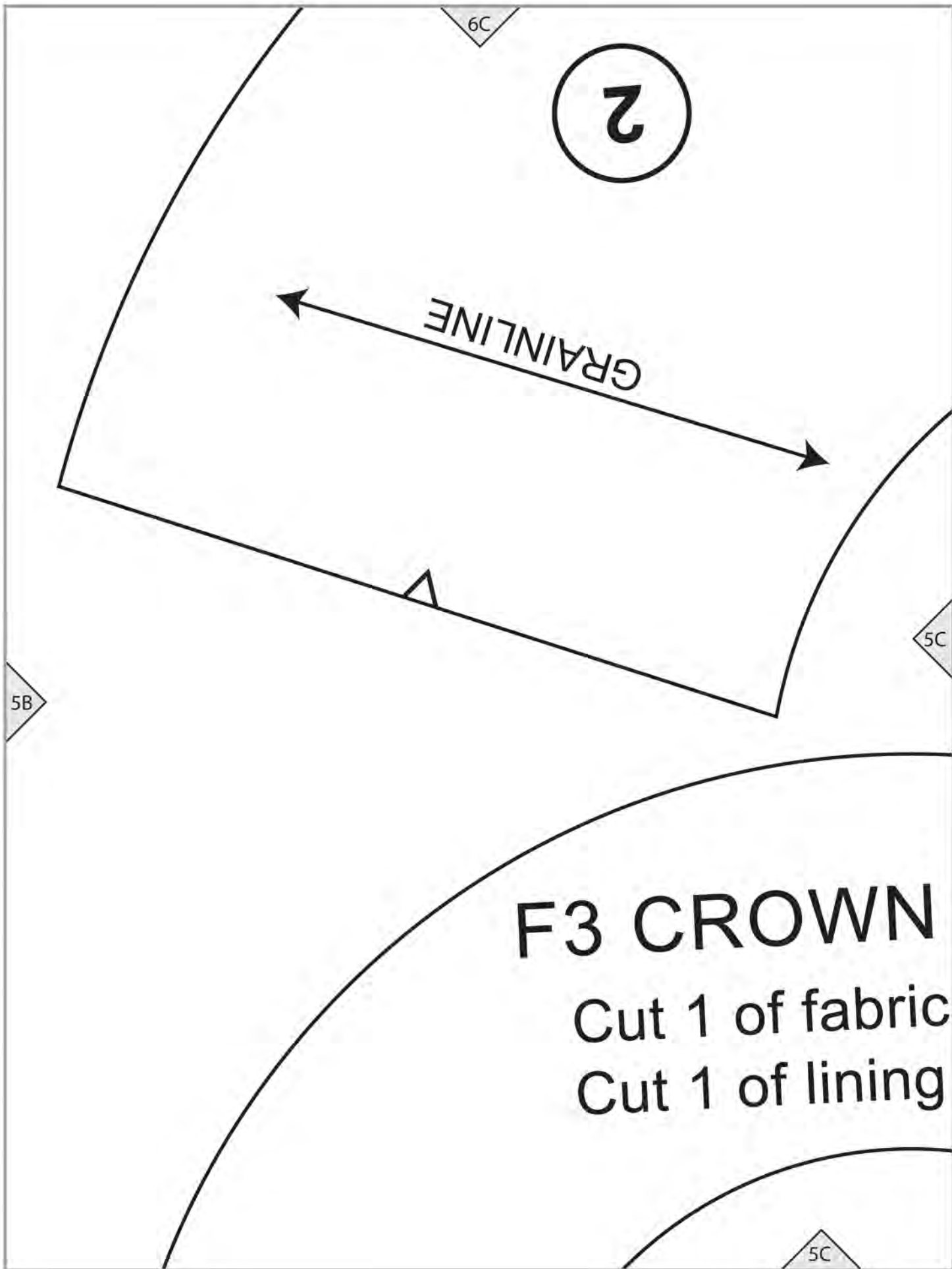
GRAINLINE



5A

5B

5B



2

GRAINLINE

5B

6C

5C

F3 CROWN

Cut 1 of fabric
Cut 1 of lining

5C

F4 BRIM

ACCESSORY (F)

6D

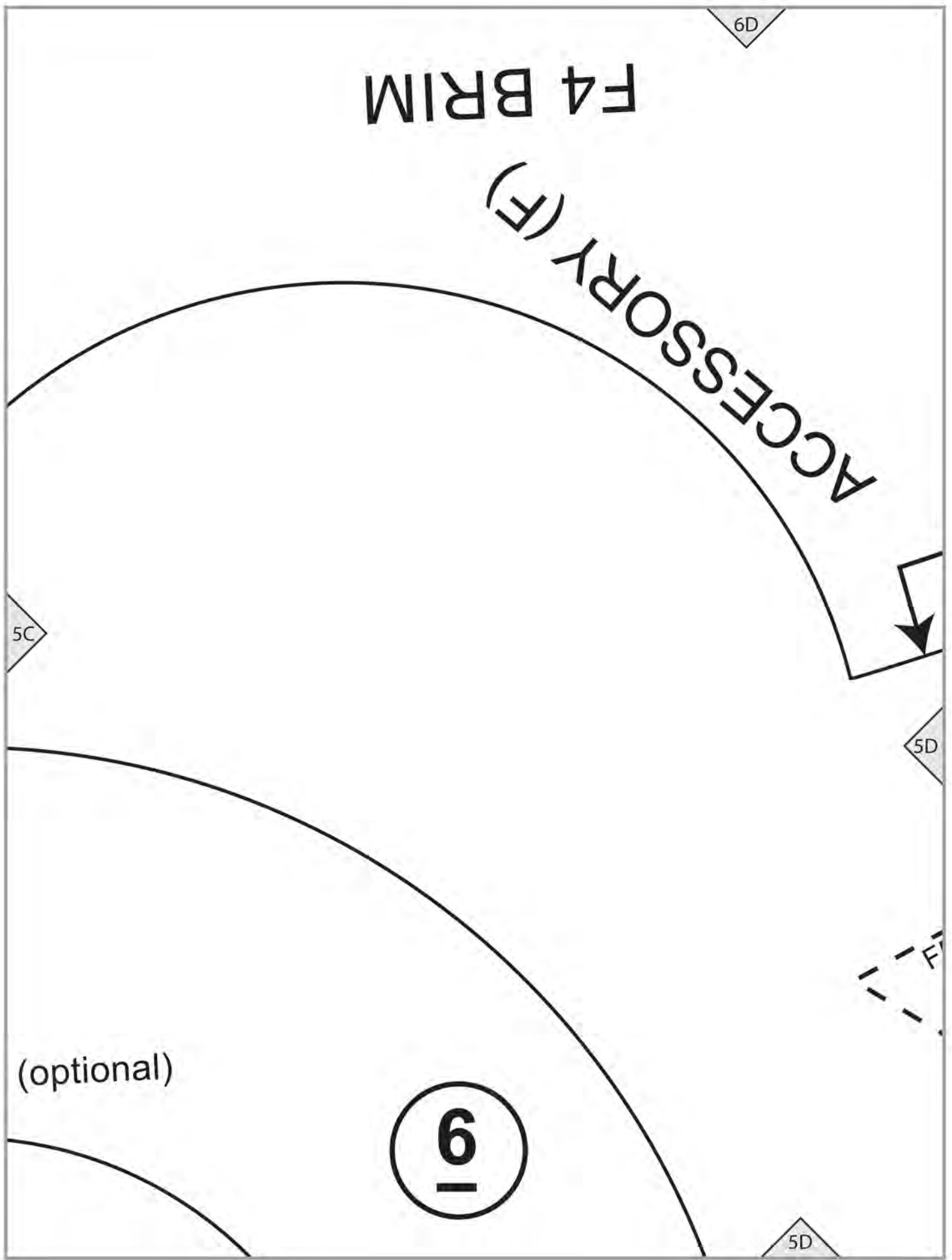
5C

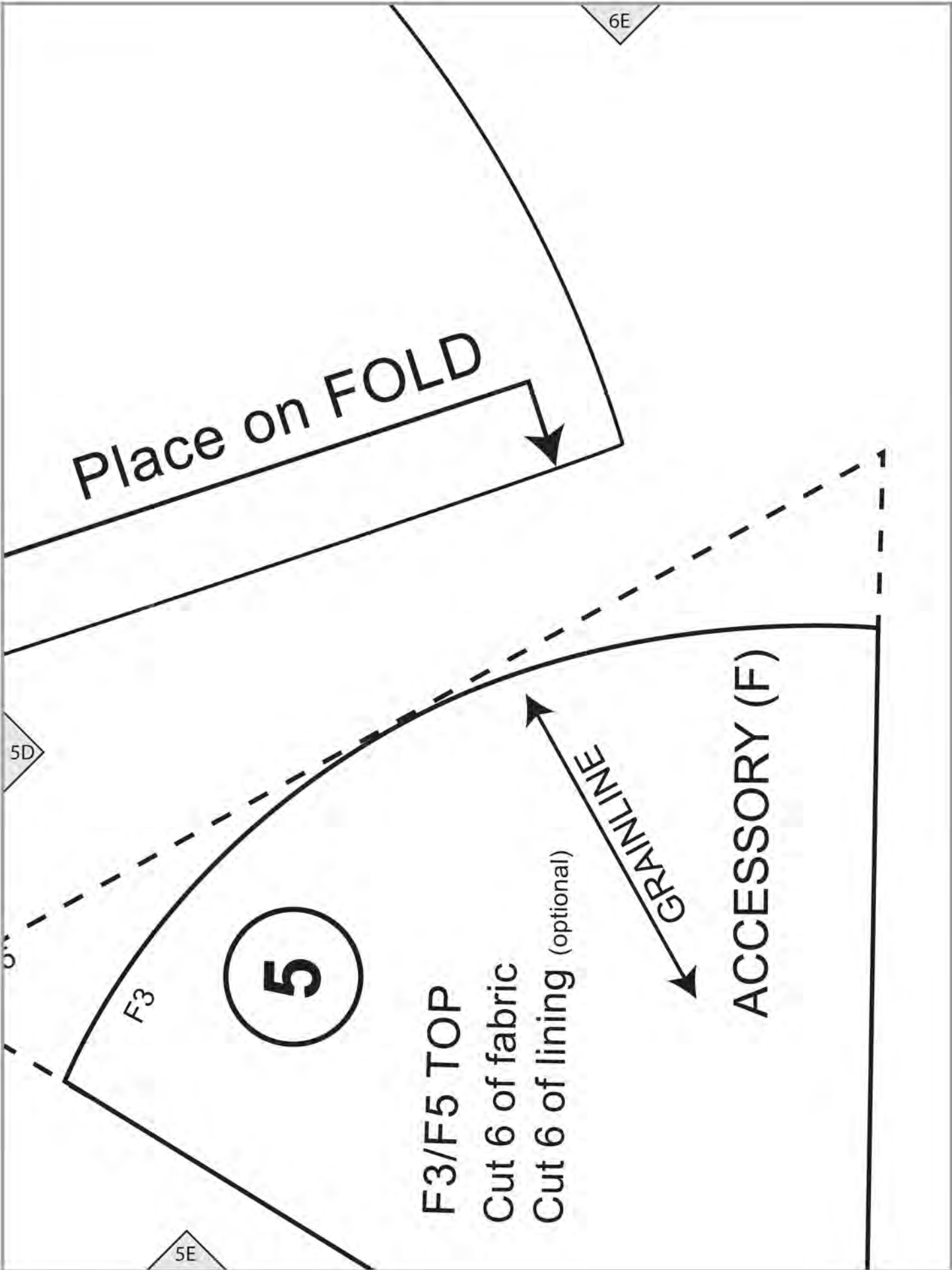
5D

(optional)

6

5D





5A

ACCESSORY (F)

CASING STITCHING LINES

4A

F6 BODY

Cut 2 of fabric

Cut 2 of lining

Cut 2 of interfacing

4A

5B

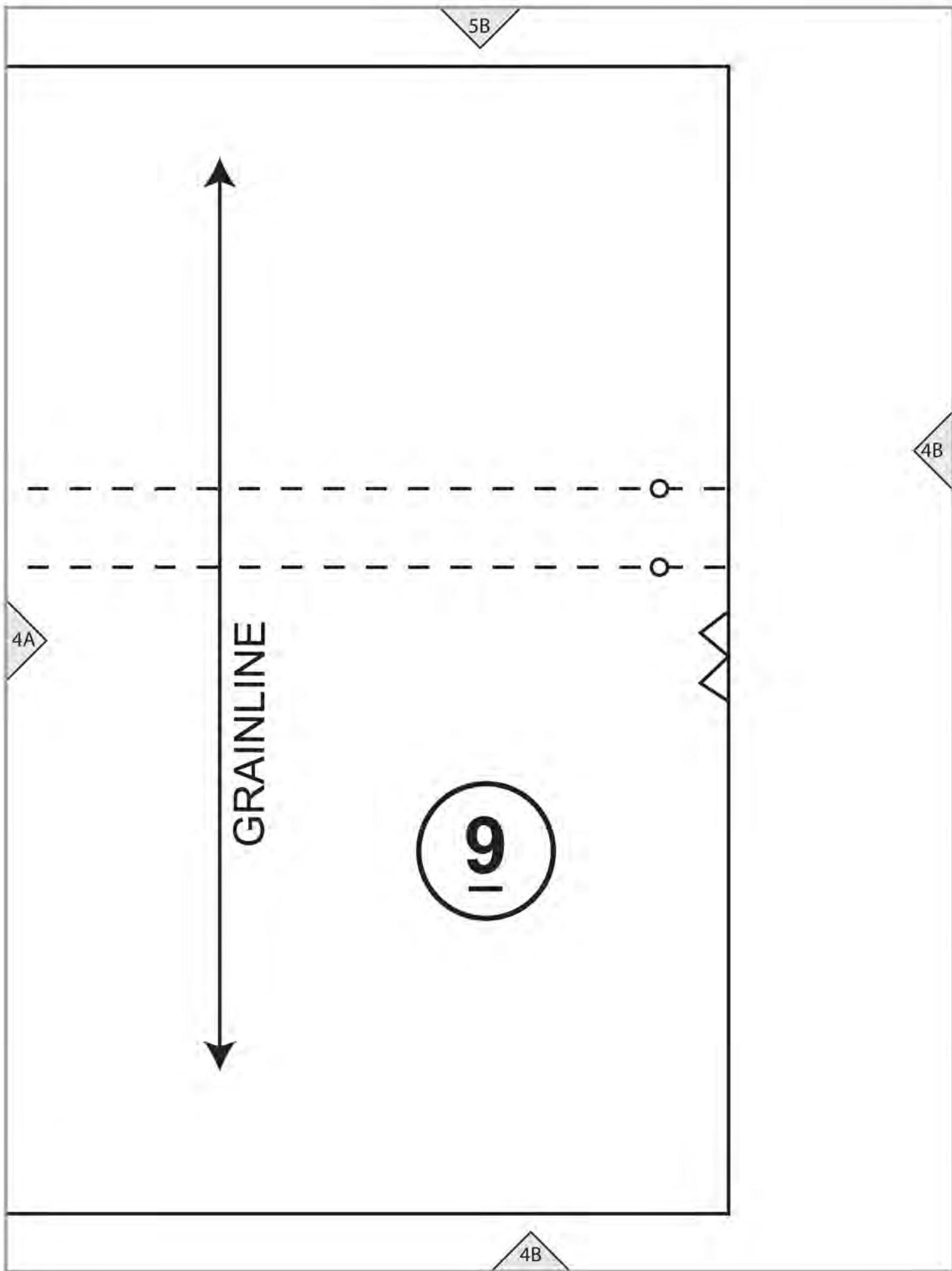
4B

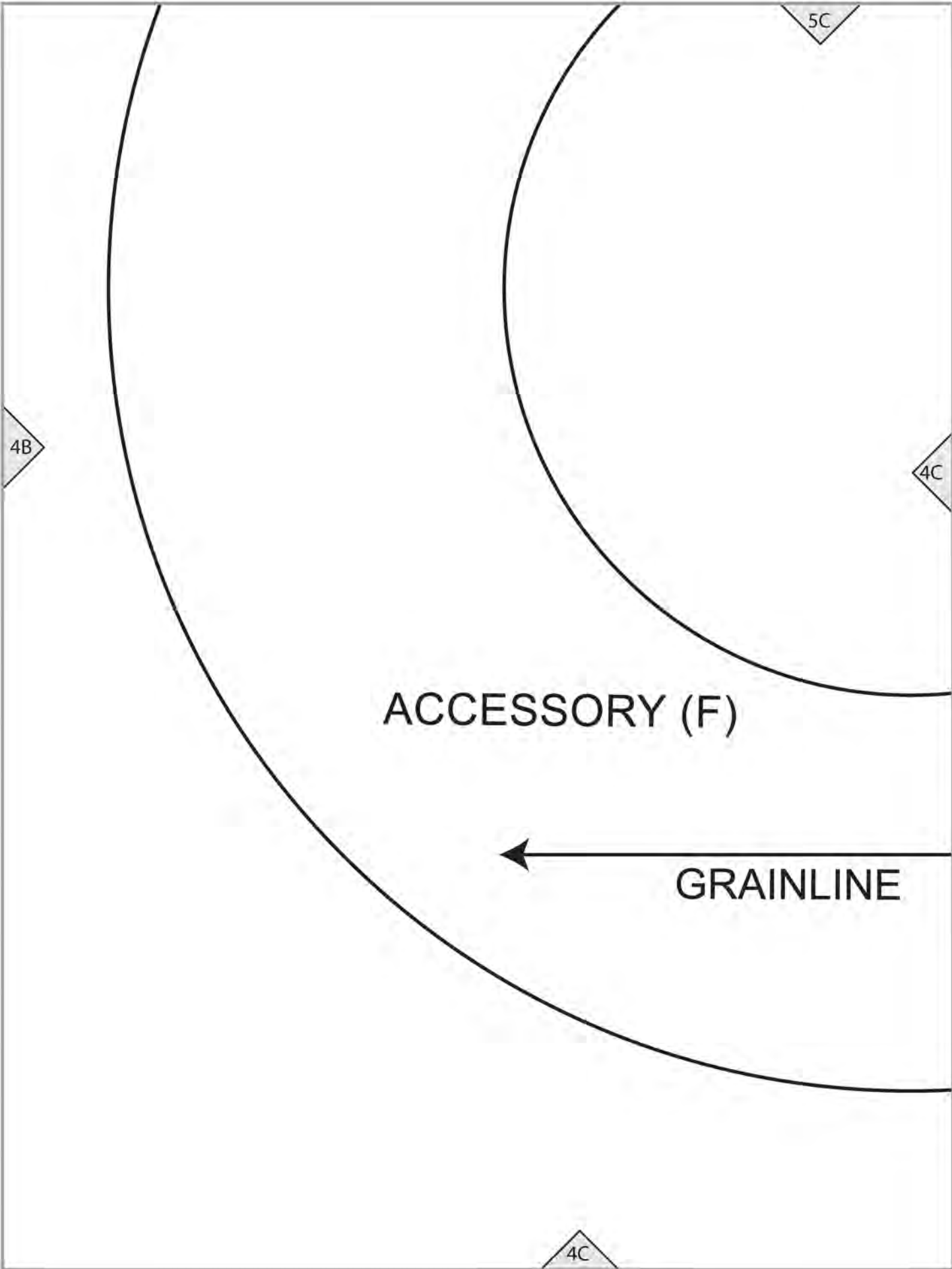
4A

GRAINLINE

9

4B





4B

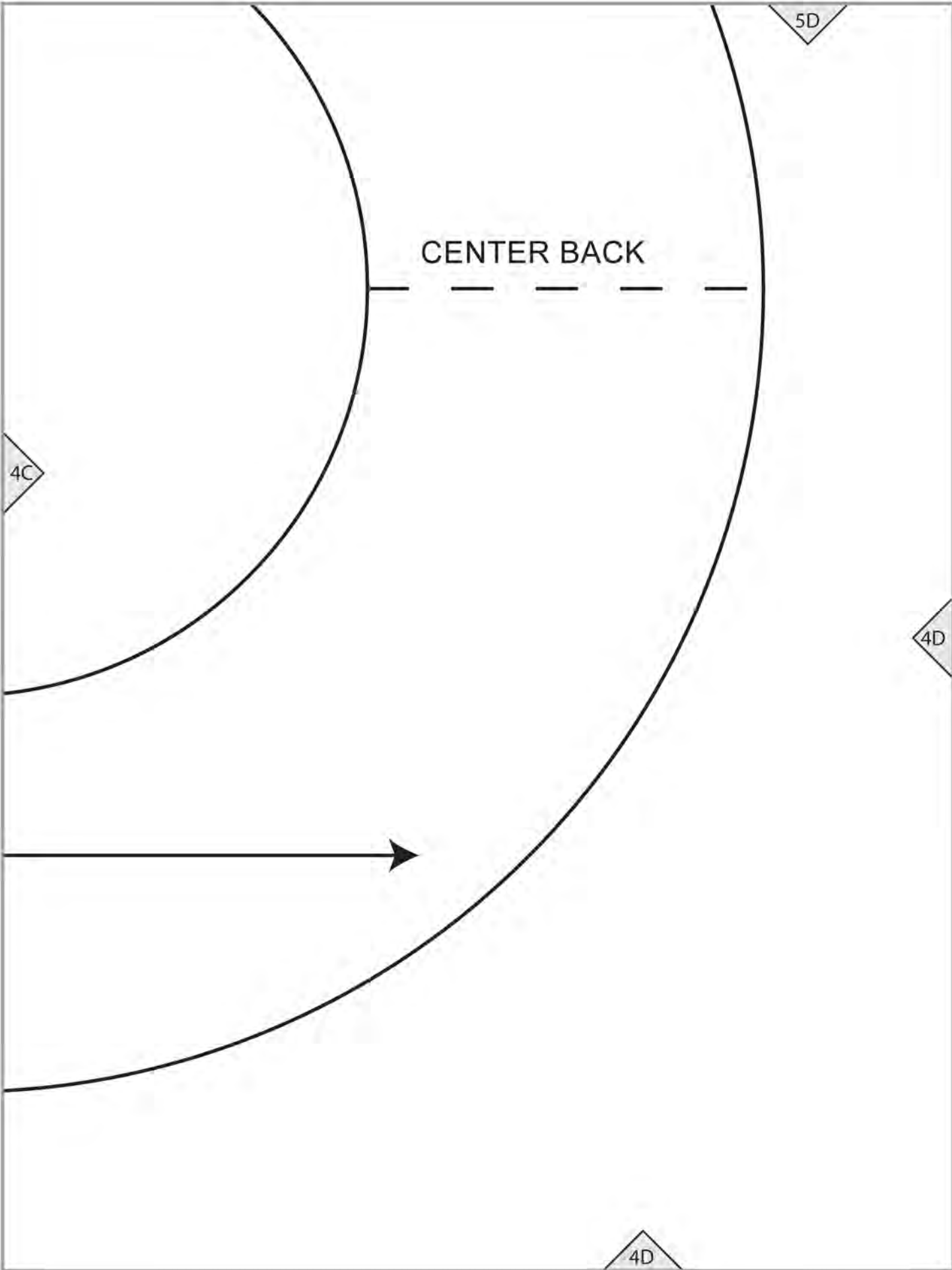
5C

4C

ACCESSORY (F)

GRAINLINE

4C



CENTER BACK

4C

5D

4D

4D

4D

5E

7

F3/F5 BAND

Cut 1 on FOLD of fabric (F3)

Cut 1 on FOLD of lining (F3)

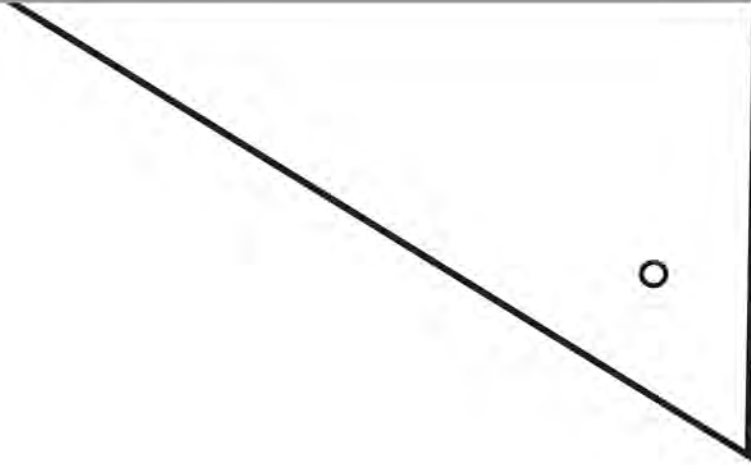
Refer to book before cutting (F5)

Place on FOLD



4E

o



4A

ACCESSORY (F)

3A

GRAINLINE

F5 INTERIOR
POCKET 2

Cut 1 of lining

16

STITCHING GUIDE

FOLD LINE

3A

4B

ACCESSORY (F)

13

3A

3B

ACCESSORY (F)

F1 VISOR

Cut 1 of fabric 1

Cut 1 of fabric 2

Cut 1 of interfacing

3B

4C

F5 CASING

Cut 2 of fabric
Cut 2 of lining

GRAINLINE

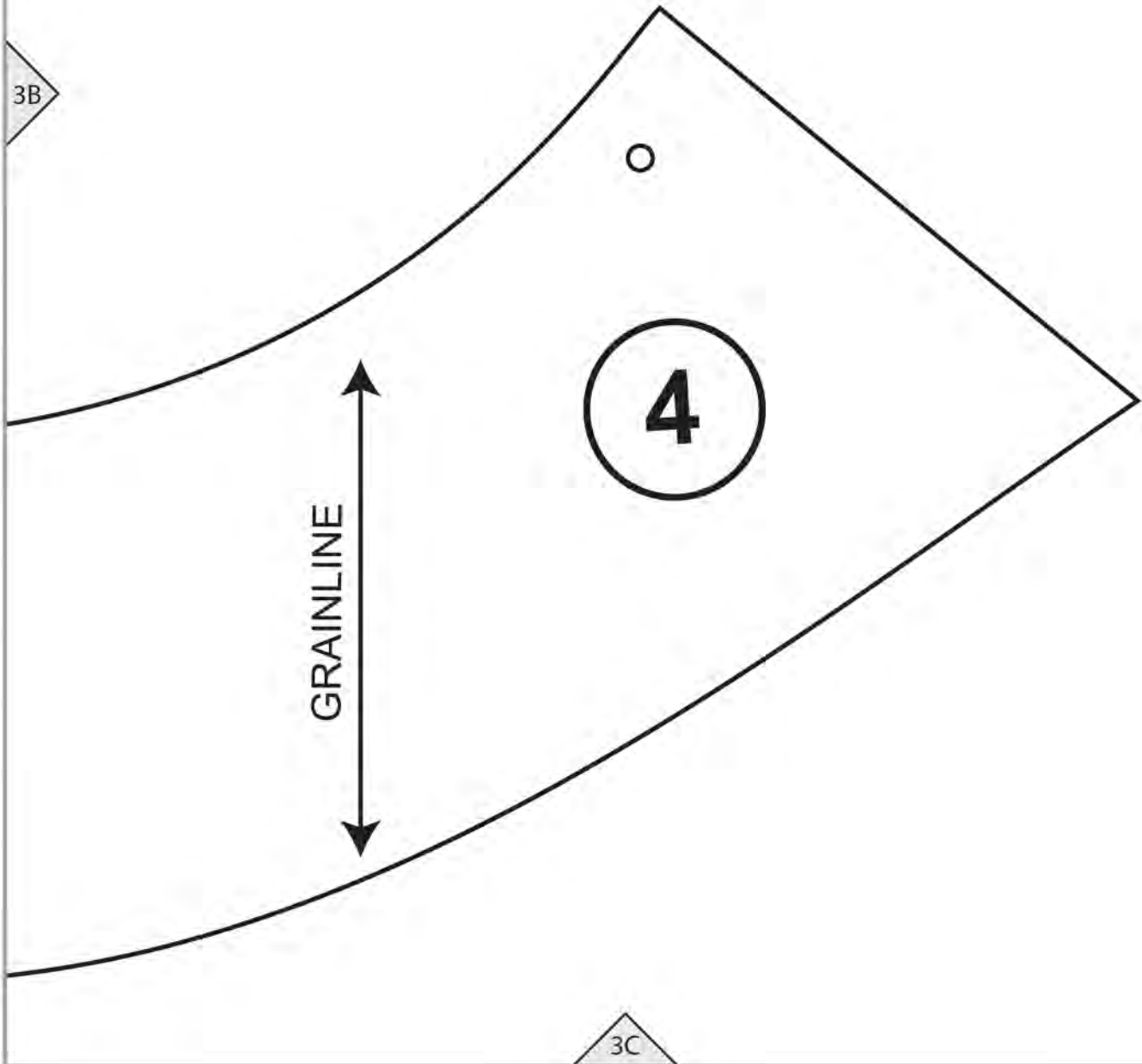
3B

3C

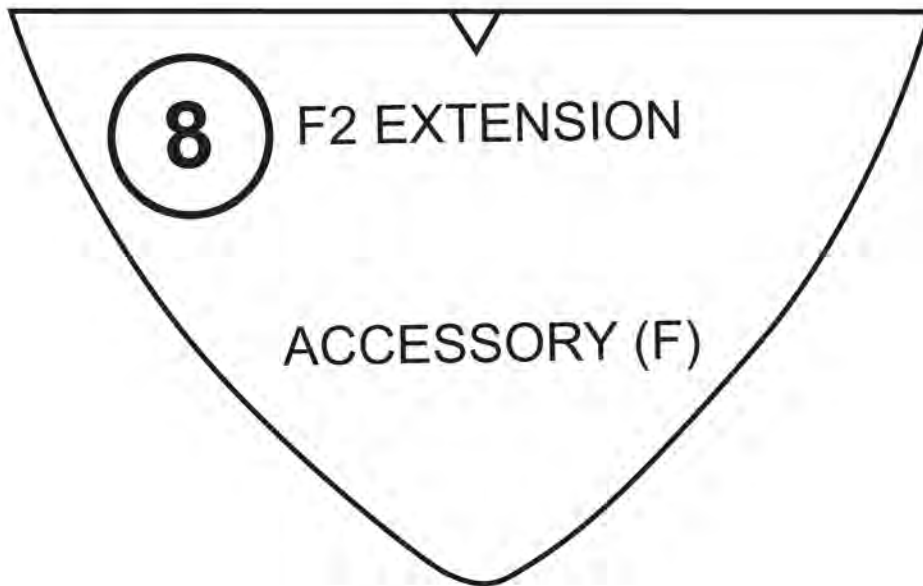
4

GRAINLINE

3C



4D



3C

3D

ACCESSORY (F)



F1 BAND

Cut 1 on FOLD of fabric

Cut 1 on FOLD of lining

Cut 1 on FOLD of interfacing

3D

3D

ACCESSORY (F)

4E

3

Place on FOLD

3E

3A



F5 FRONT AND BACK

Cut 2 of fabric

Cut 2 of lining

Cut 2 of interfacing

2A

2A

3B

2B

2A

THE **MAGIC** 
PATTERN BOOK

BY AMY BARICKMAN

workman

workman.com

THE ACCESSORY (MAGIC PATTERN F)

TEST SQUARE
4" (10 cm)

2B

2B

2C

3C

2C

F5 OUTER POCKET

Cut 2 of fabric (from stitched pieces 5, 11, and 18)

Cut 2 of lining

Cut 2 of interfacing

2C

3D

10

ACCESSORY (F)

FOLD LINE

2D

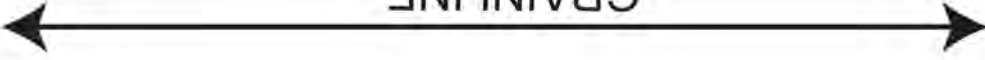
2D

F5 INTERIOR
POCKET 1

Cut 1 of lining

15

GRAINLINE

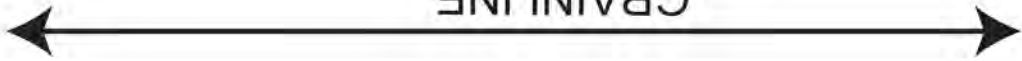


3E

2D

17

GRAINLINE



2E

o

o

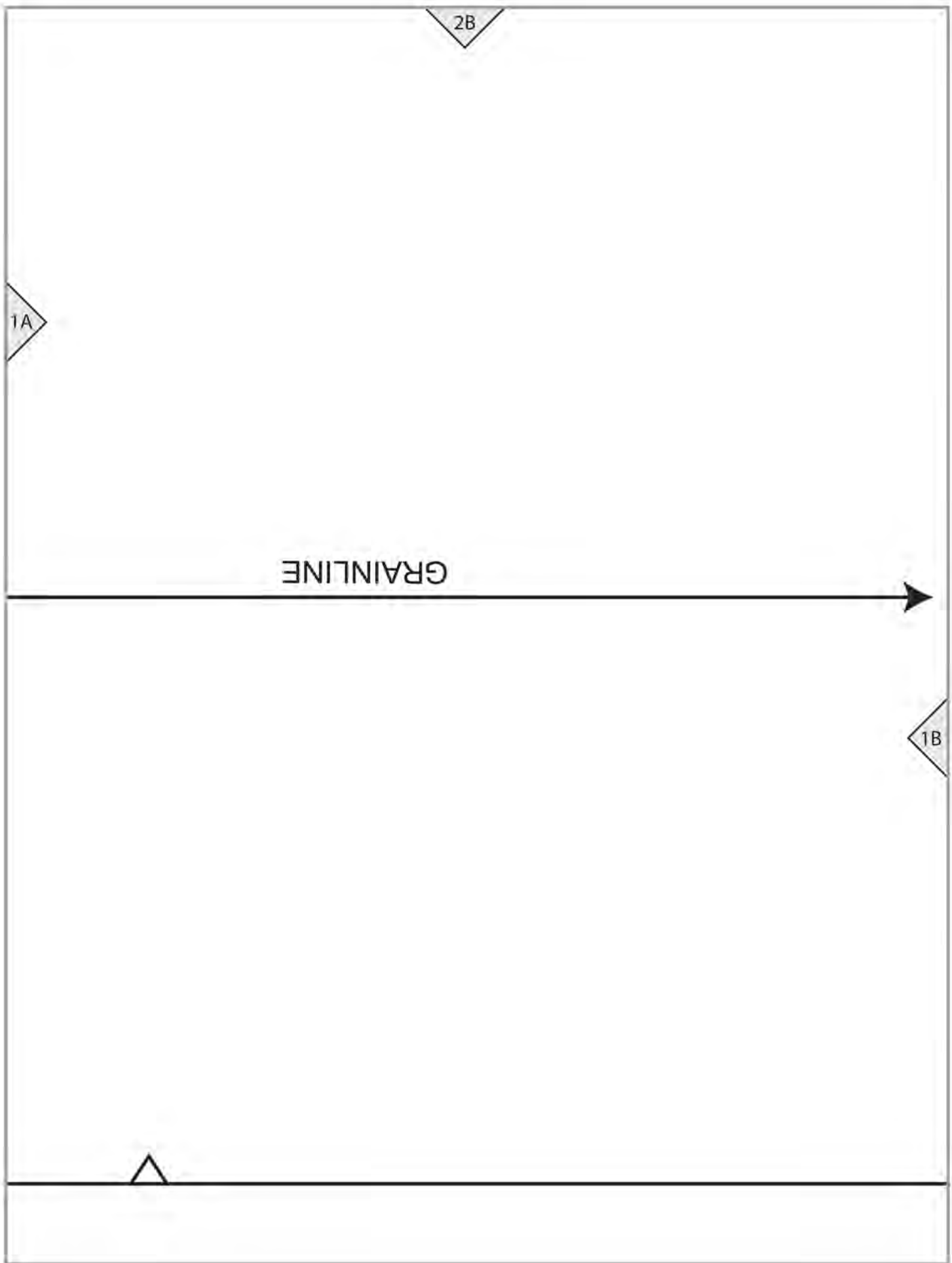
ACCESSORY (F)

12



1A

2A



1B

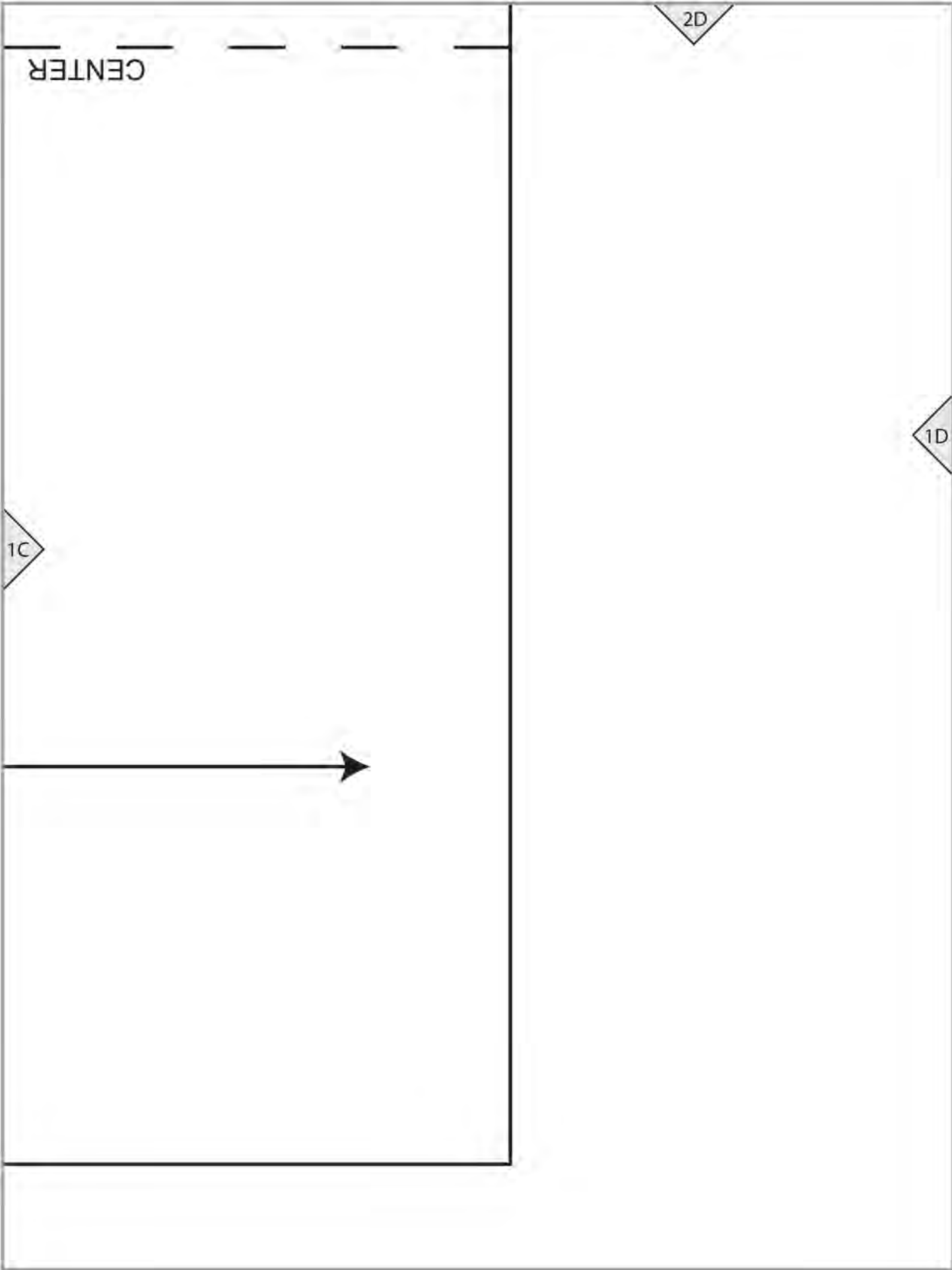
2C

ACCESSORY (F)

GRAINLINE

1C





2E

1D

ACCESSORY (F)

F5 BASE

- Cut 1 of fabric
- Cut 1 of lining
- Cut 2 of interfacing

