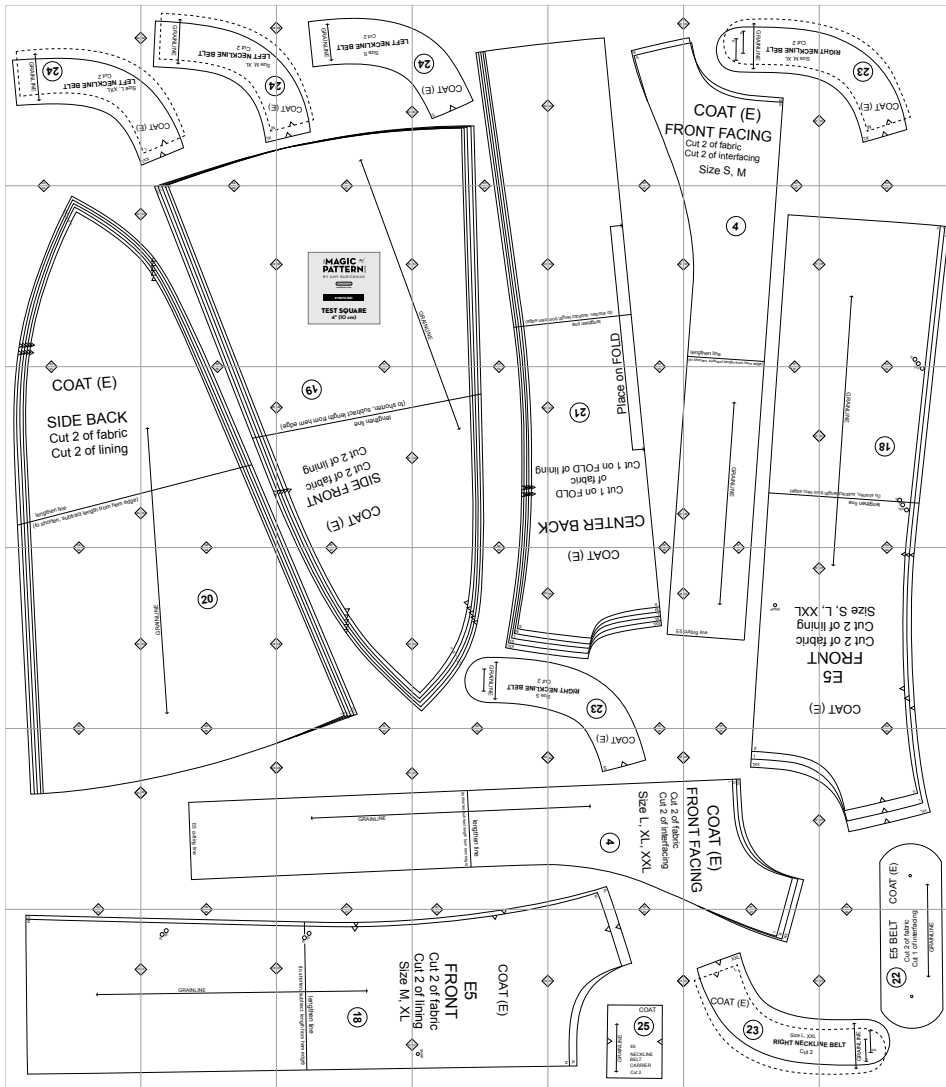


# E5. Evelyn



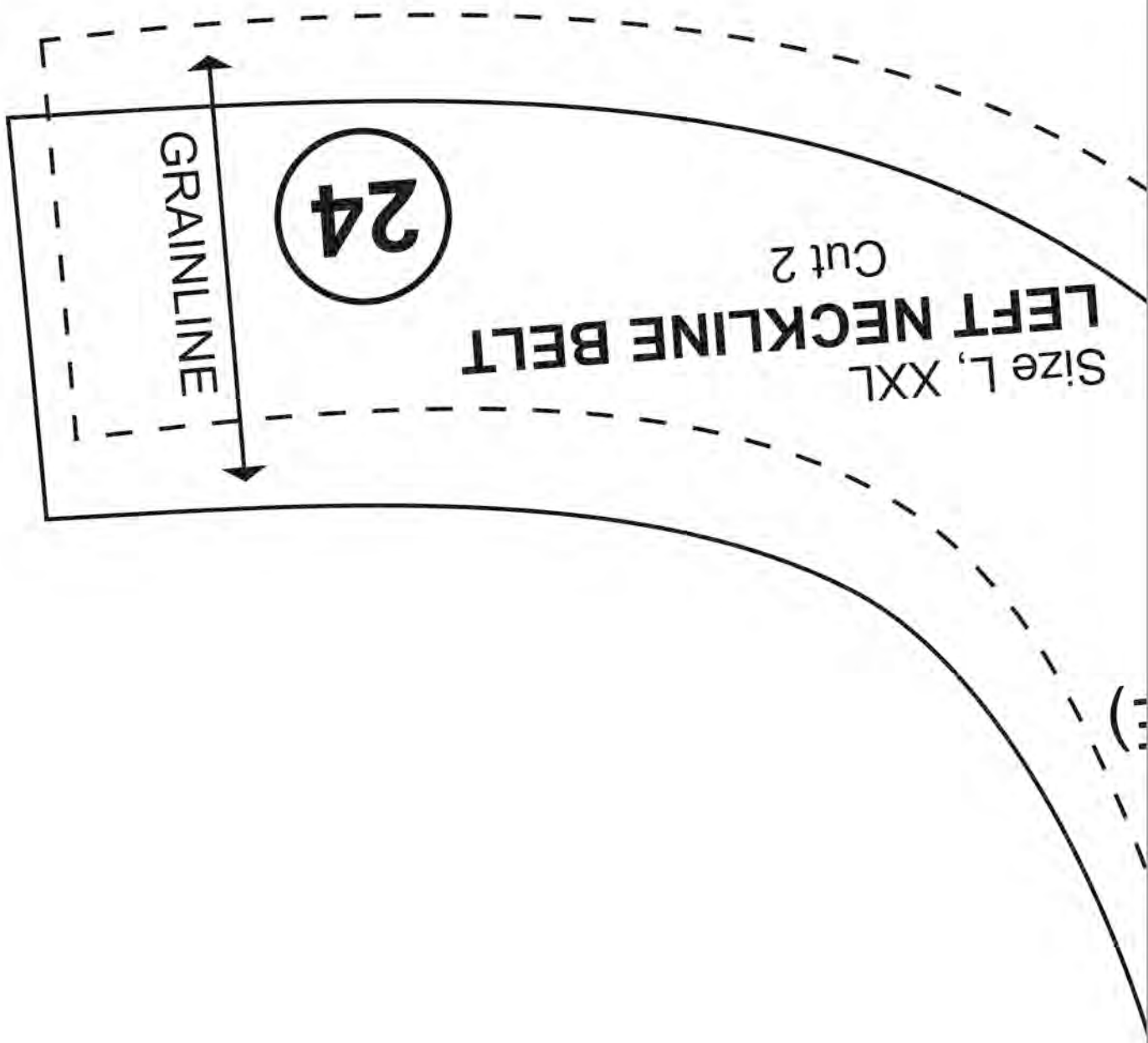
Copyright ©2014 by Amy Barickman

All rights reserved. Amy Barickman's patterns may be printed for personal use, but may not be otherwise reproduced—mechanically, electronically, or by any other means, including photocopying—without written permission of the publisher.

Sewing pattern designs for *The Magic Pattern Book* by Amy Barickman are intended for personal use only, and not as the basis for commercial manufacturing.

Workman Publishing, New York • [workman.com](http://workman.com)

6A



6A

**LEFT NECKLINE BELT**  
Size L, XXL

Cut 2

24

GRAINLINE

6A

6B



4

(E)

M

XL

COAT (E)

XXL

6B

6B

GRAINLINE

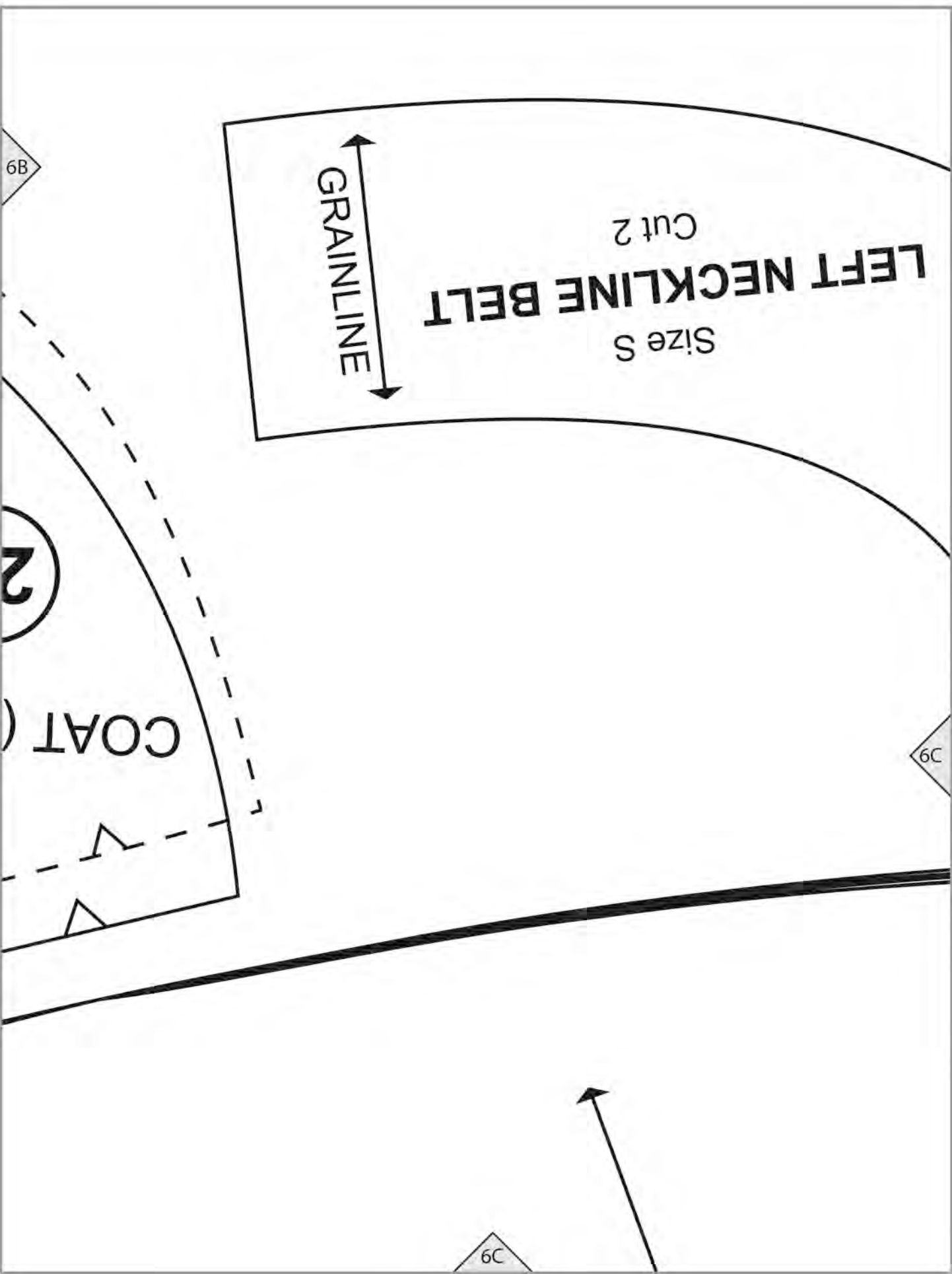
Size S  
LEFT NECKLINE BELT  
Cut 2

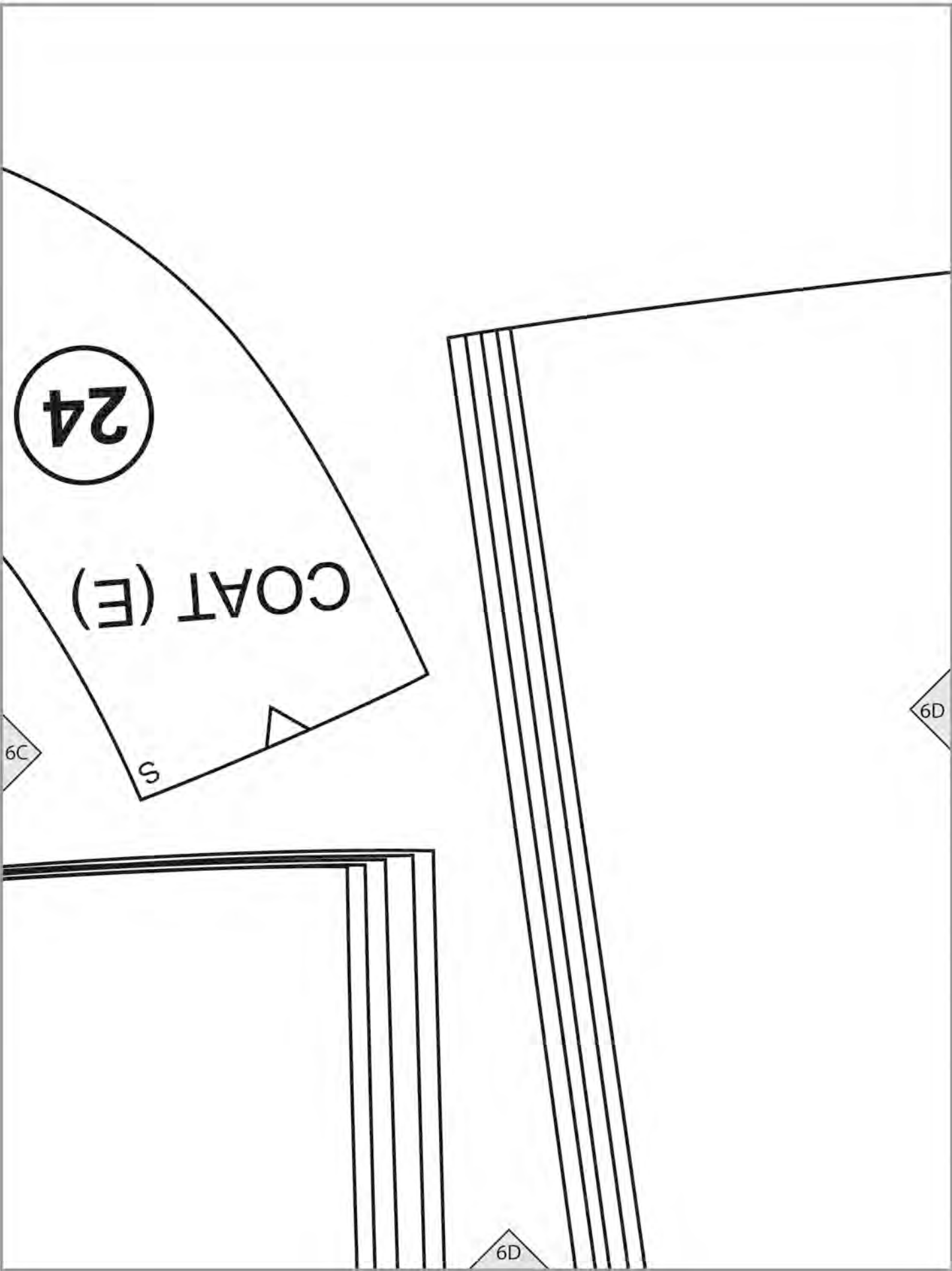
2

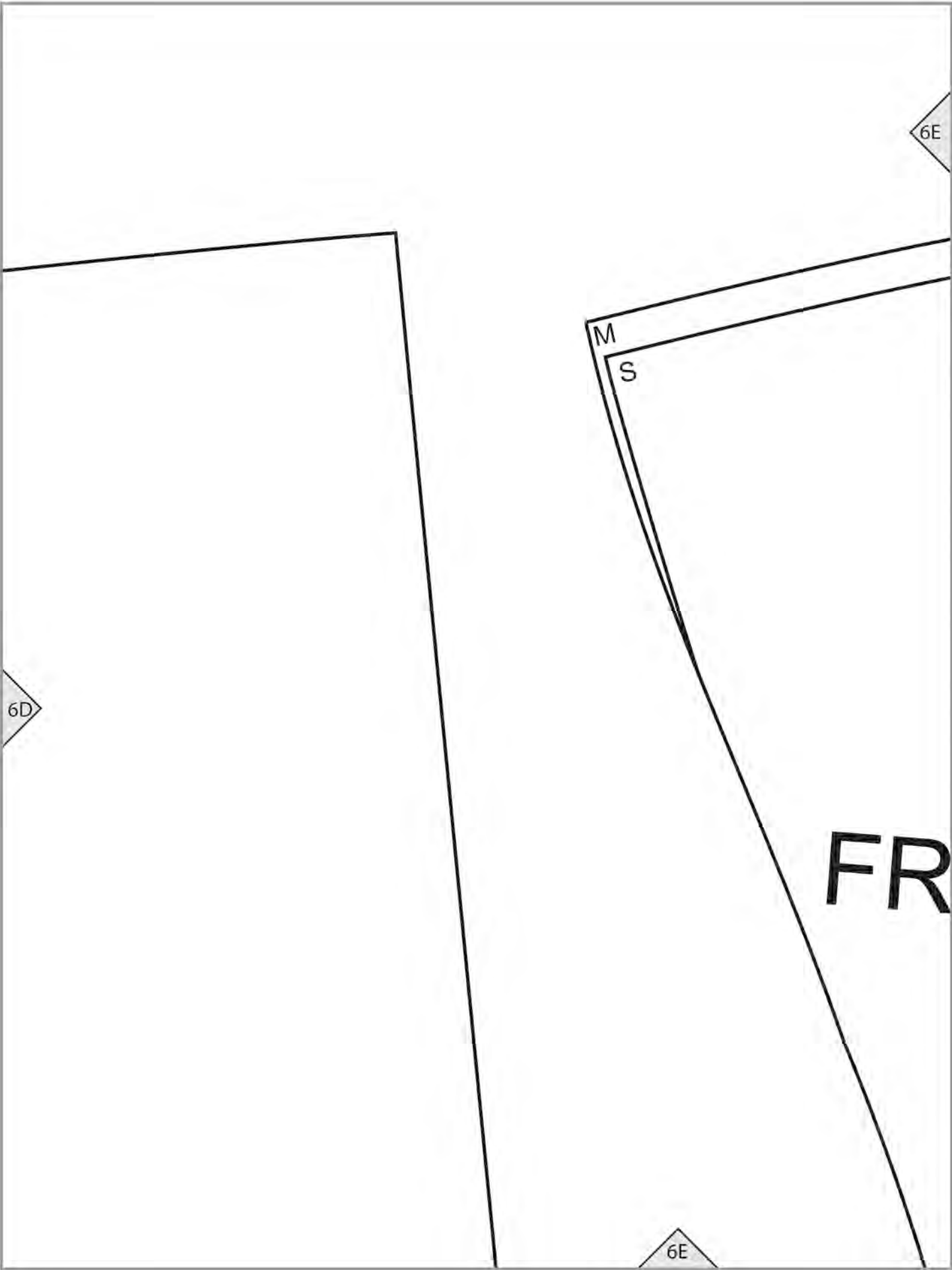
COAT (

6C

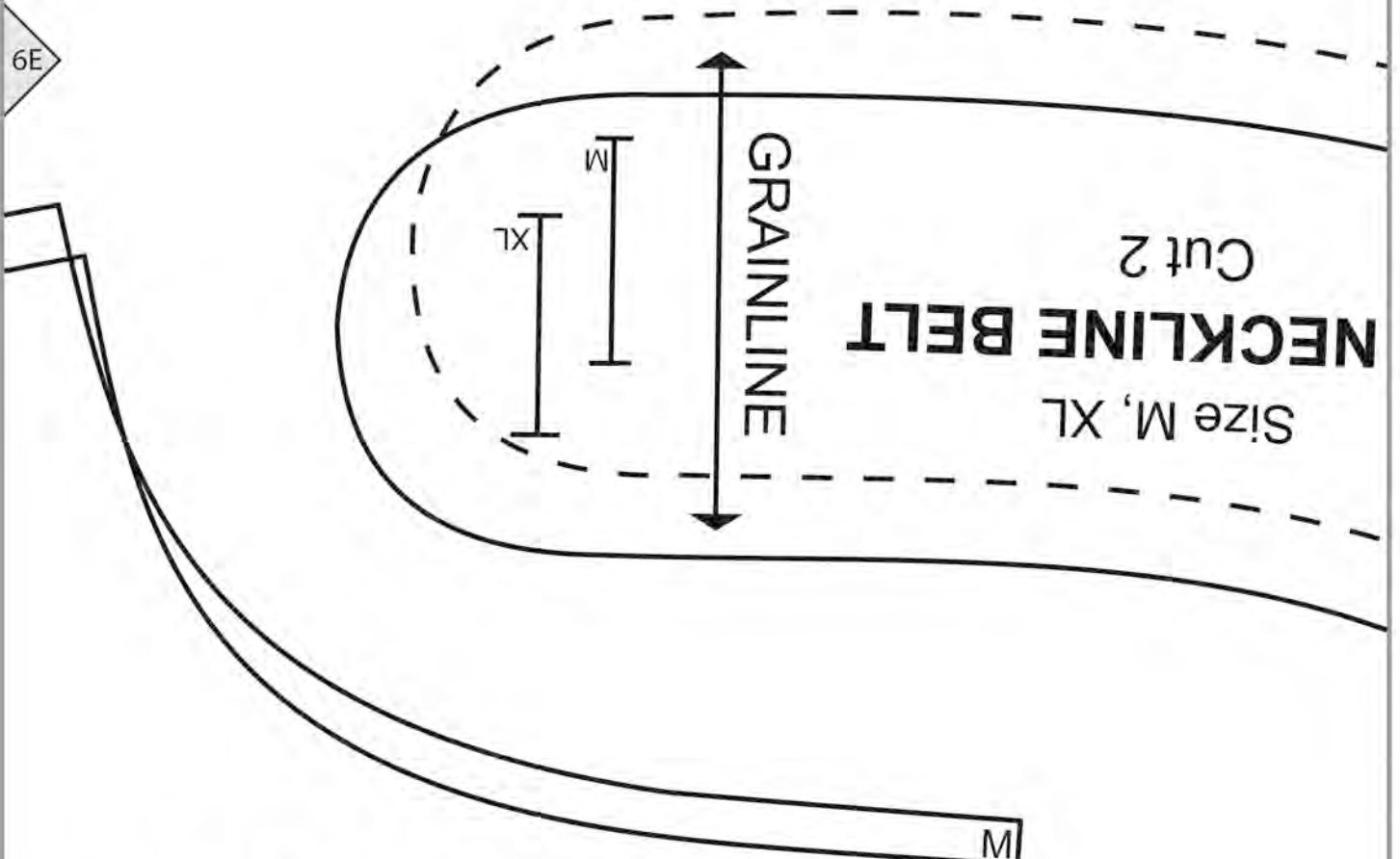
6C







6E



**NECKLINE BELT**  
Cut 2  
Size M, XL

M  
S

# COAT (E)

## COAT FACING

Cut 2 of fabric  
Cut 2 of interfacing  
Size S, M

6F

6F

**RIGHT**

**23**

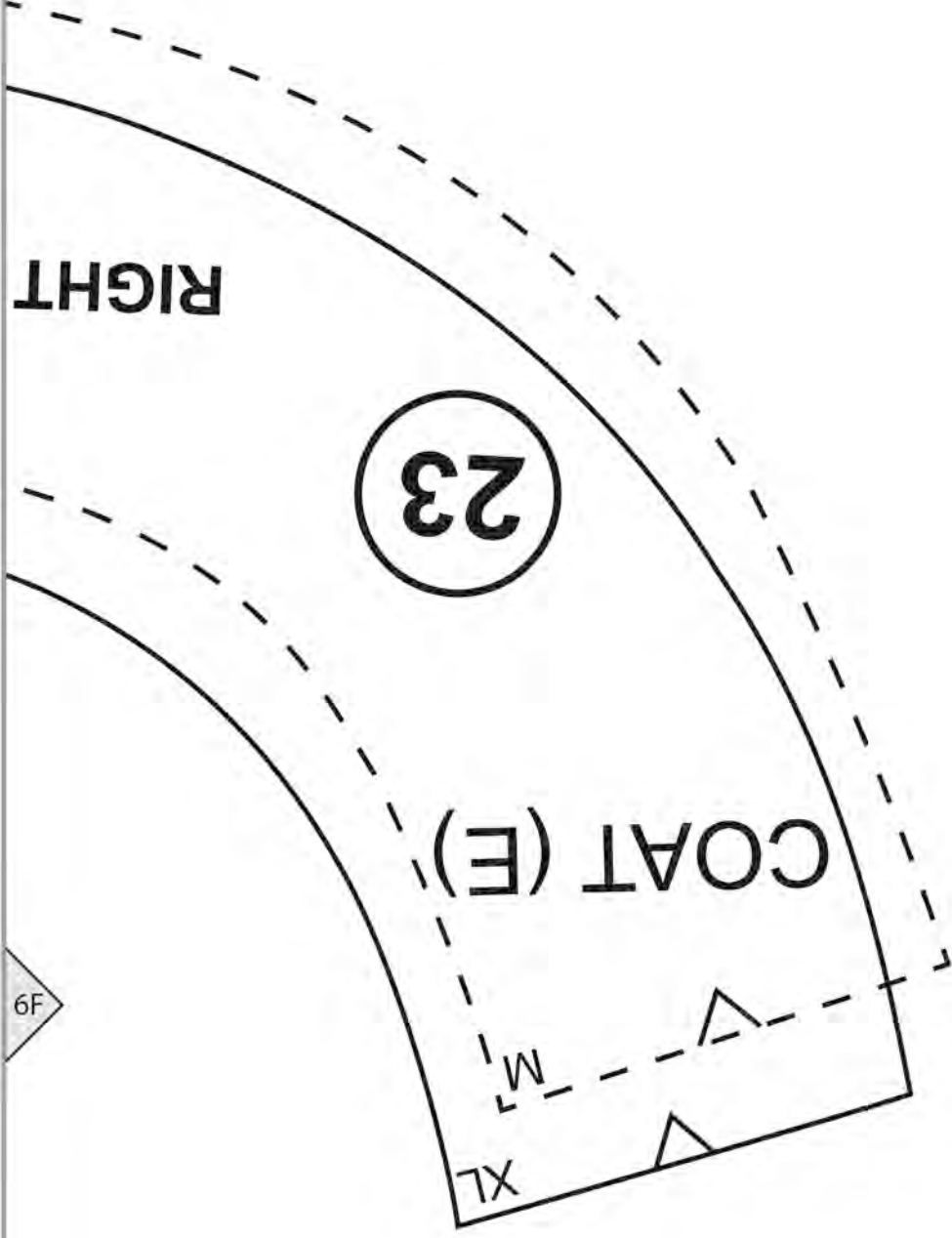
**COAT (E)**

6F

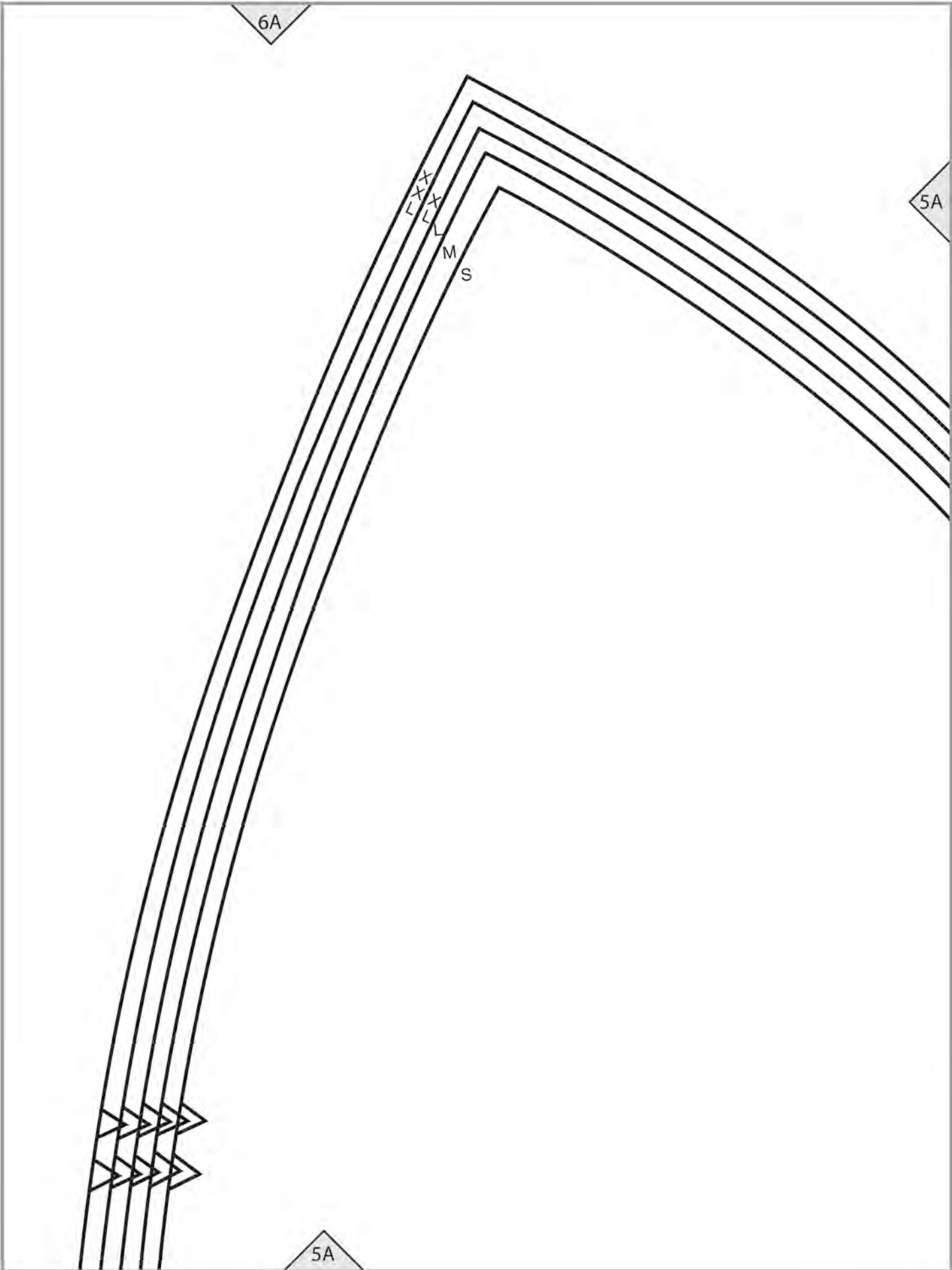
XL

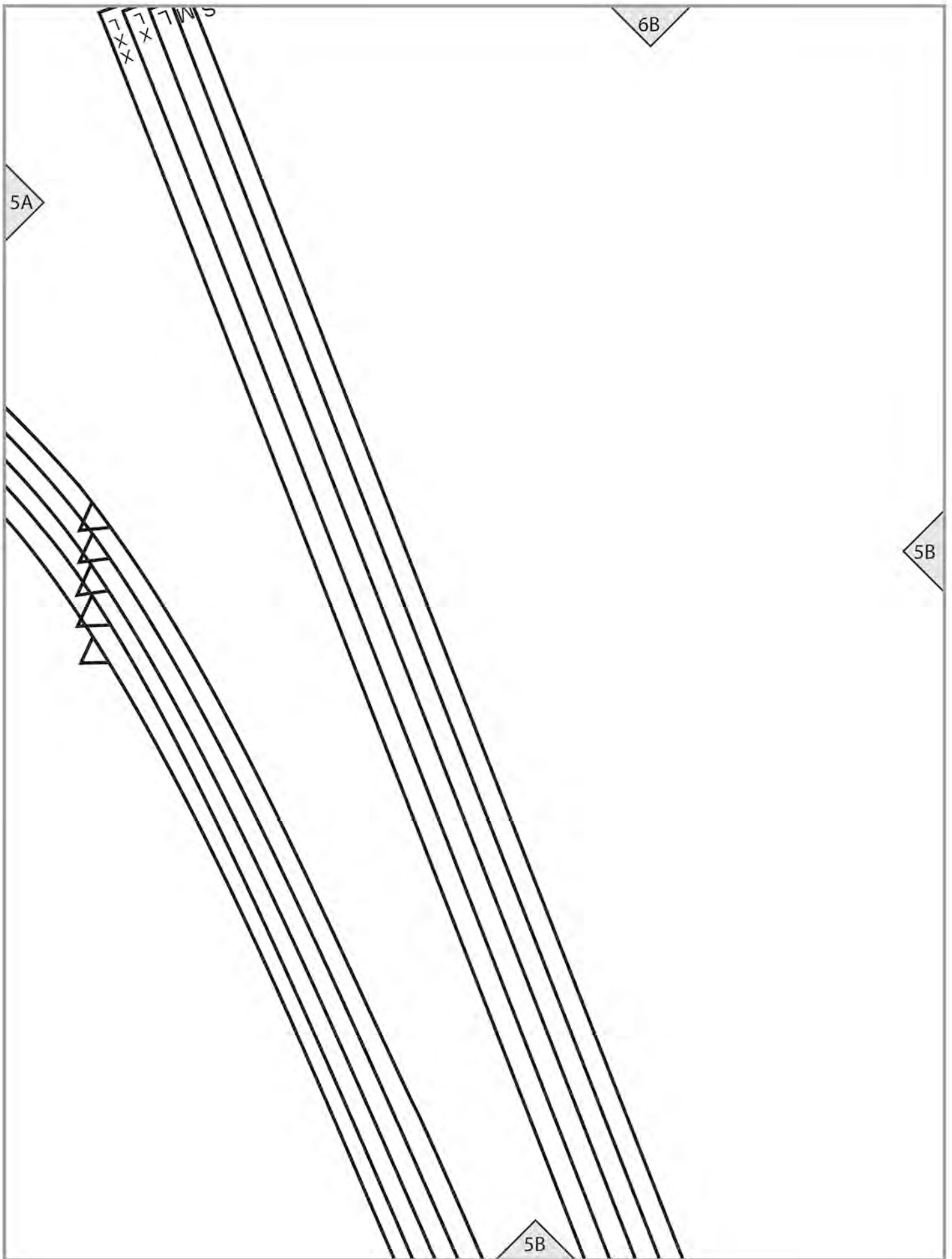
M

6G









6B

5A

5B

5B

7  
x  
x  
7  
x  
7  
s  
s

△  
△  
△  
△  
△


6C

5B

5C

THE **MAGIC**  **PATTERN** BOOK

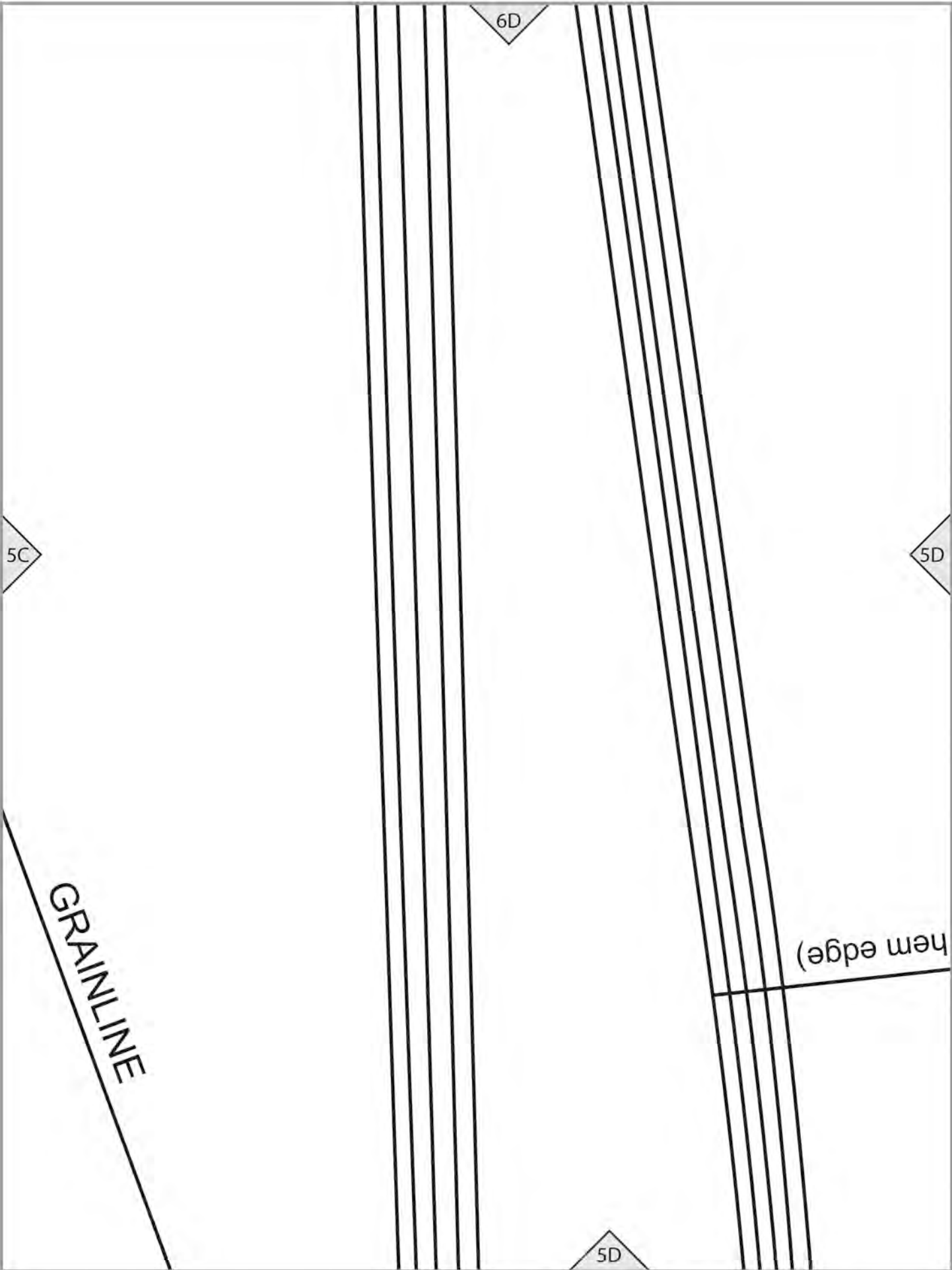
BY AMY BARICKMAN

  
workman.com

**EVELYN (E5)**

**TEST SQUARE**  
4" (10 cm)

5C



5C

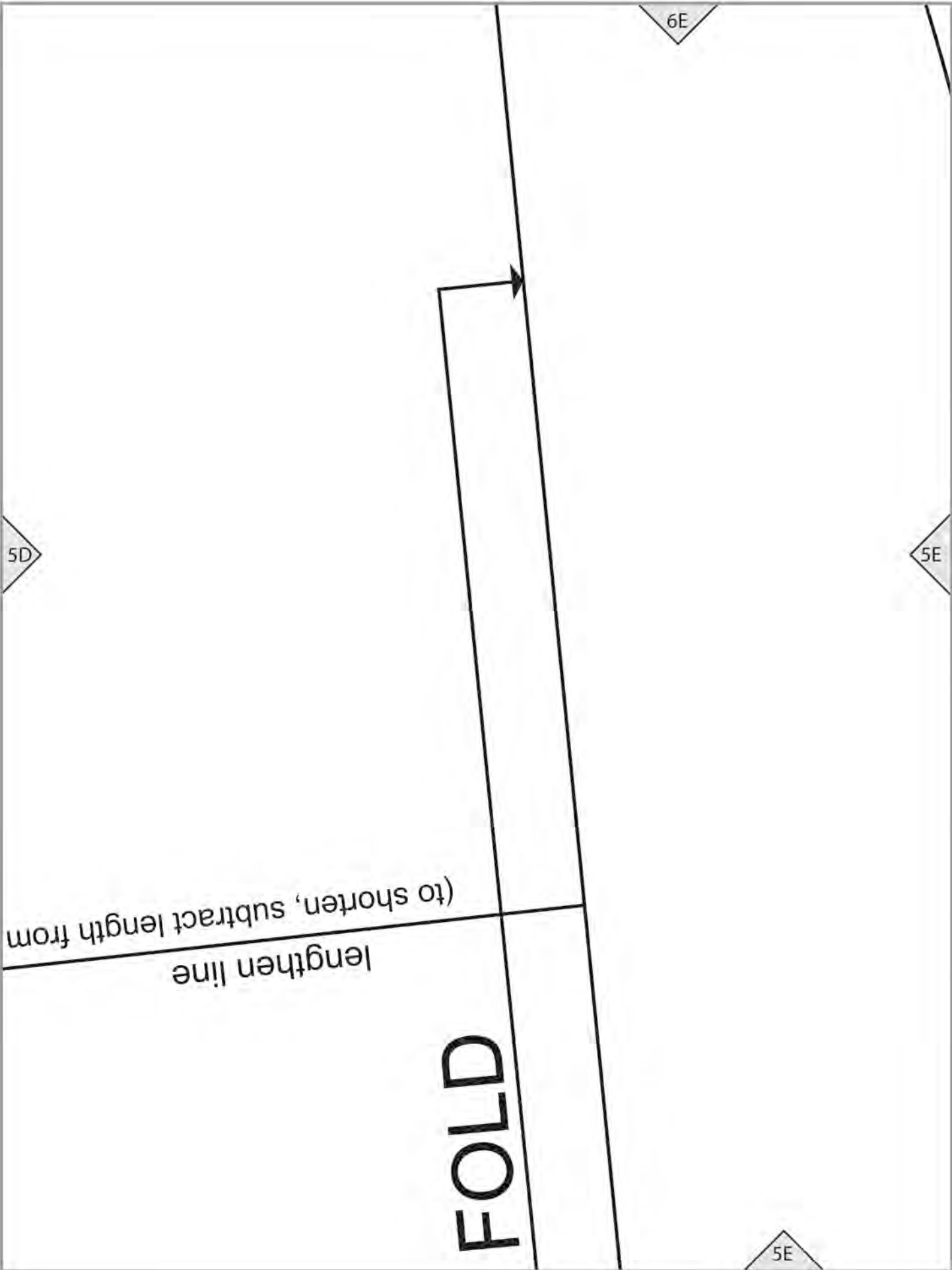
5D

6D

5D

GRAINLINE

(hem edge)



6E

5D

5E

lengthen line  
(to shorten, subtract length from)

**FOLD**

5E

4

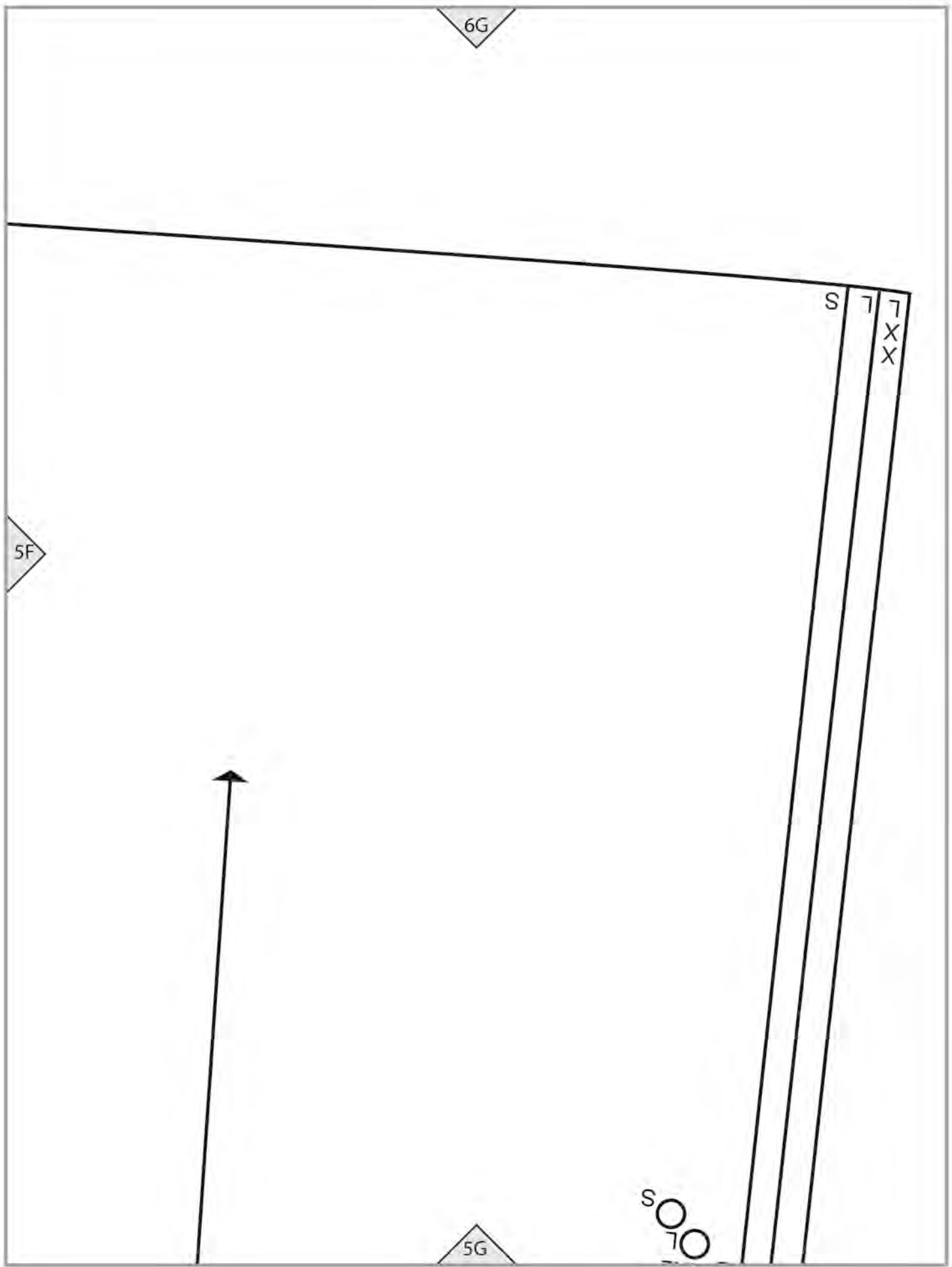
5E

6F

5F

lengthen line  
(to shorten, subtract length from hem edge)

5F



6G

5F

5G

S

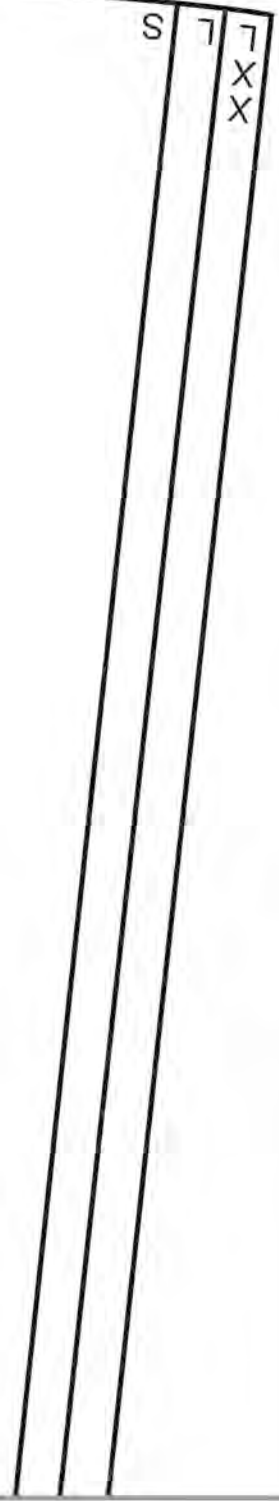
T

T

X

X

SO TO



5A

# COAT (E)

## SIDE BACK

Cut 2 of fabric

Cut 2 of lining

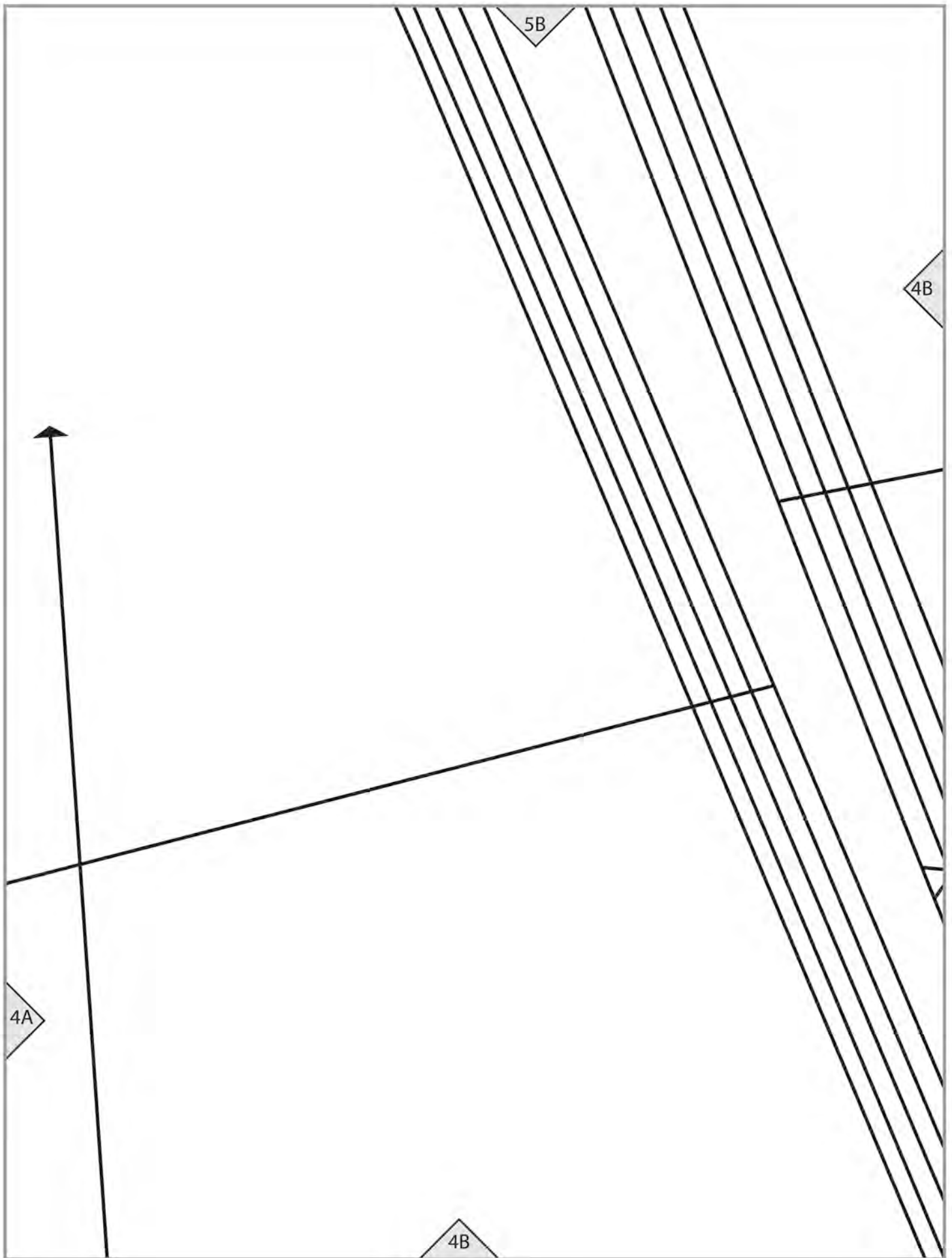
lengthen line

(to shorten, subtract length from hem edge)

4A

4A





19

4B

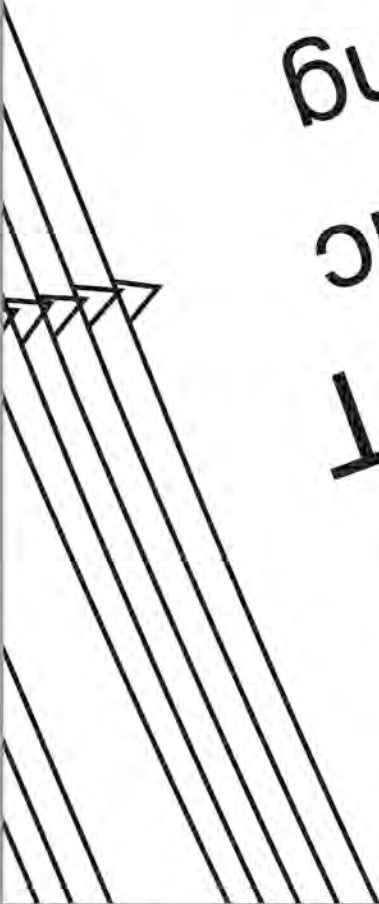
lengthen line  
(to shorten, subtract length from hem edge)

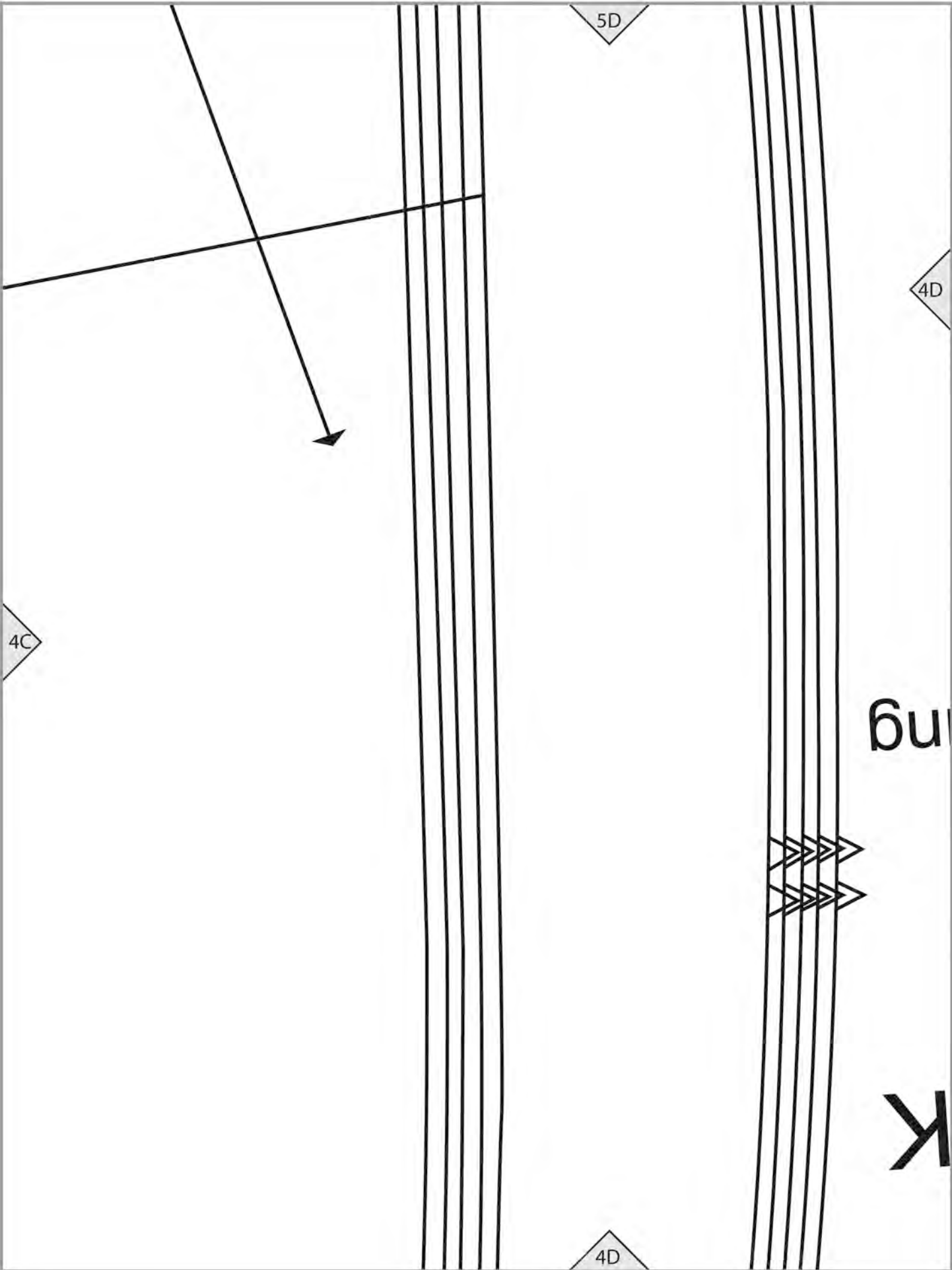
4C

Cut 2 of lining  
Cut 2 of fabric  
SIDE FRONT

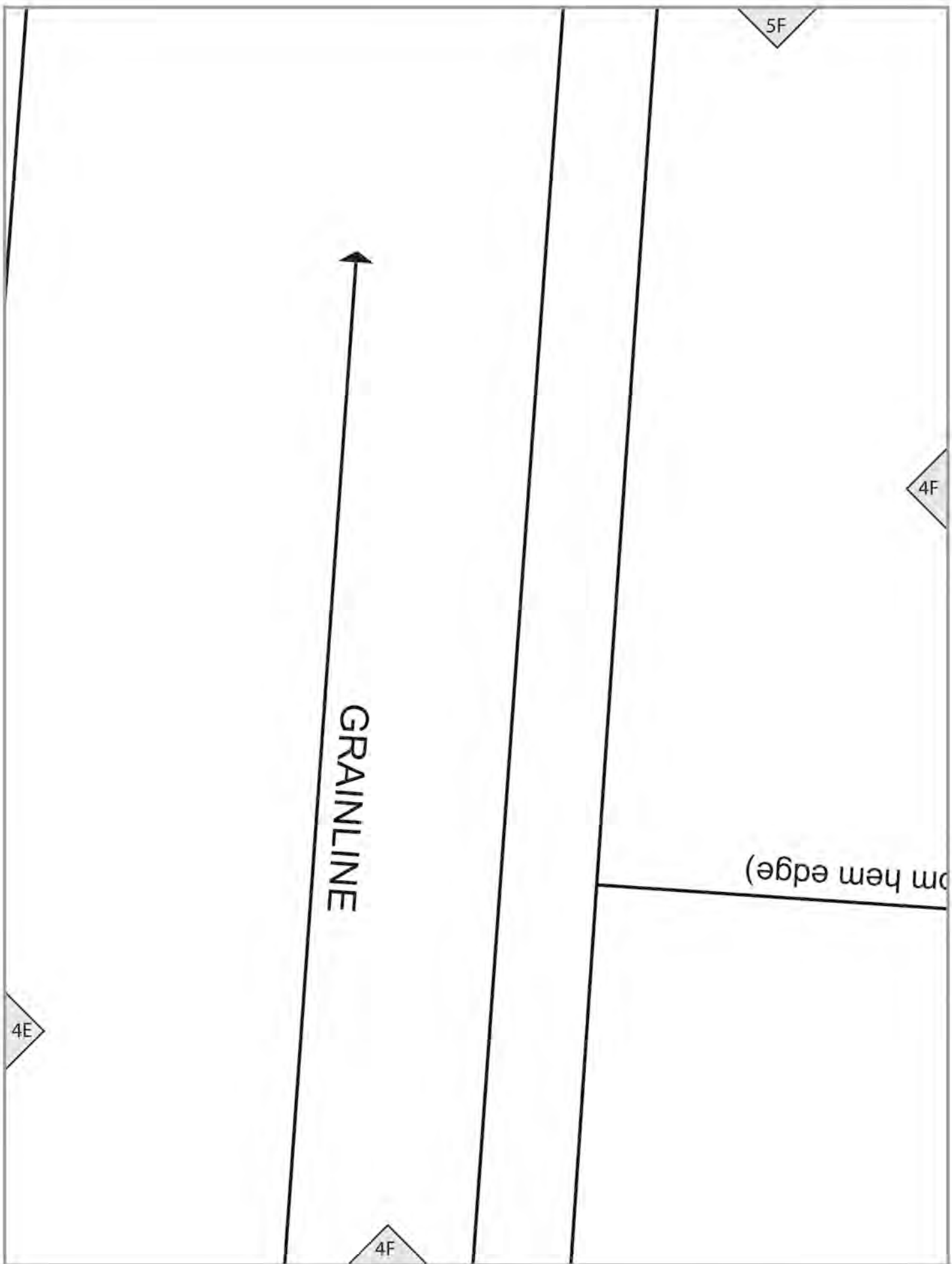
COAT (E)

4C









4E

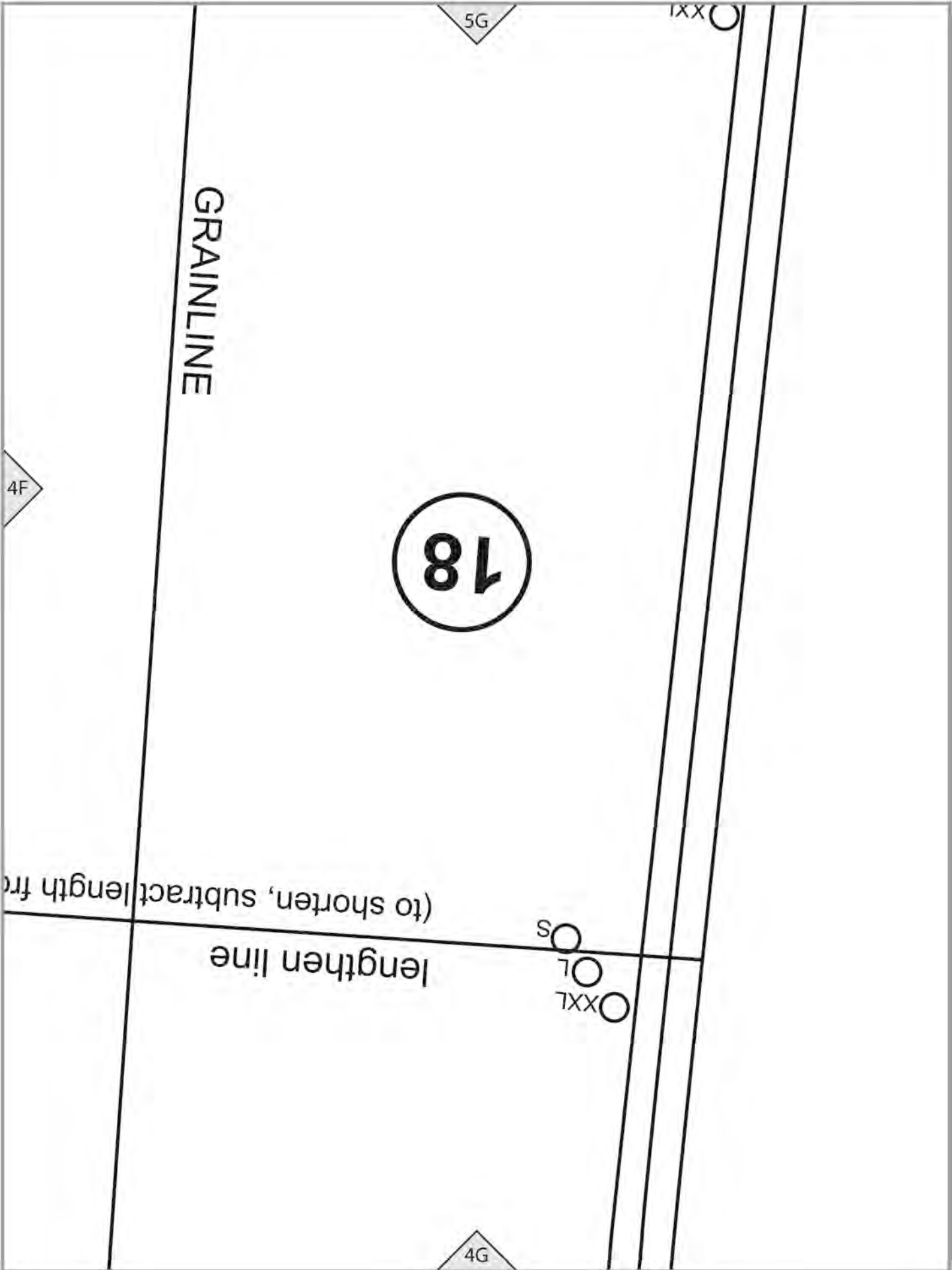
GRAINLINE

4F

5F

4F

(əbɹə wəy wɔ)

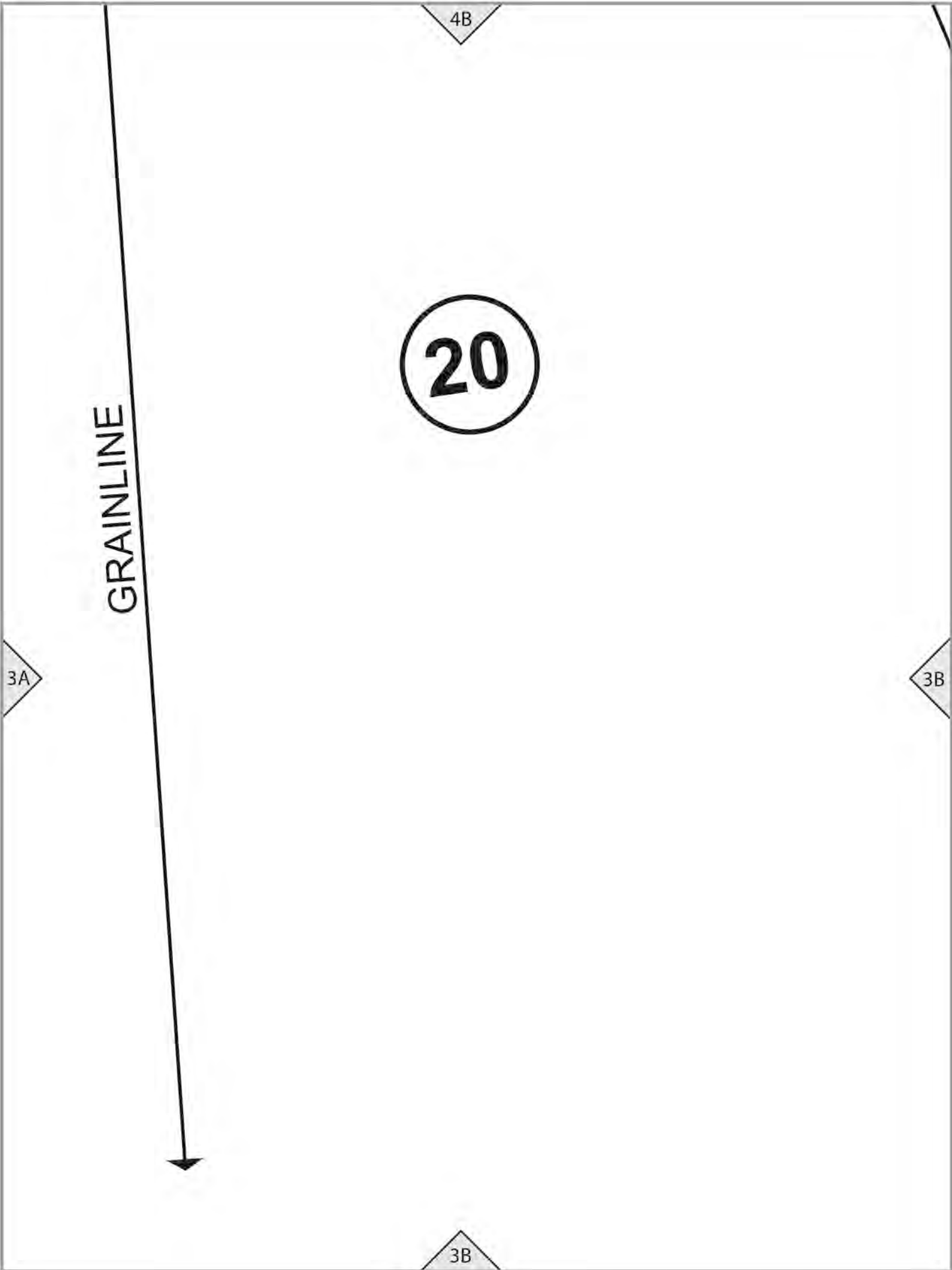




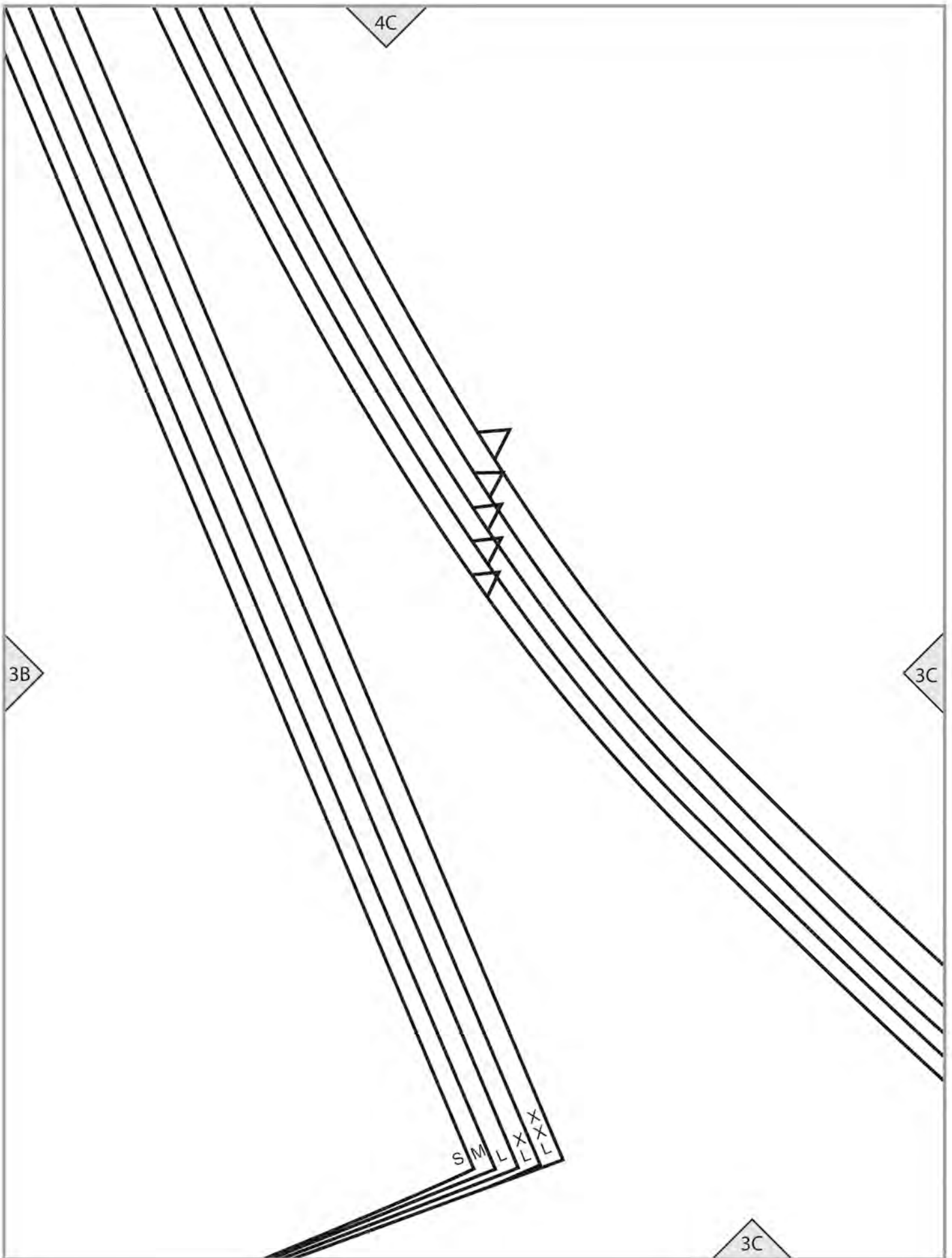
4A

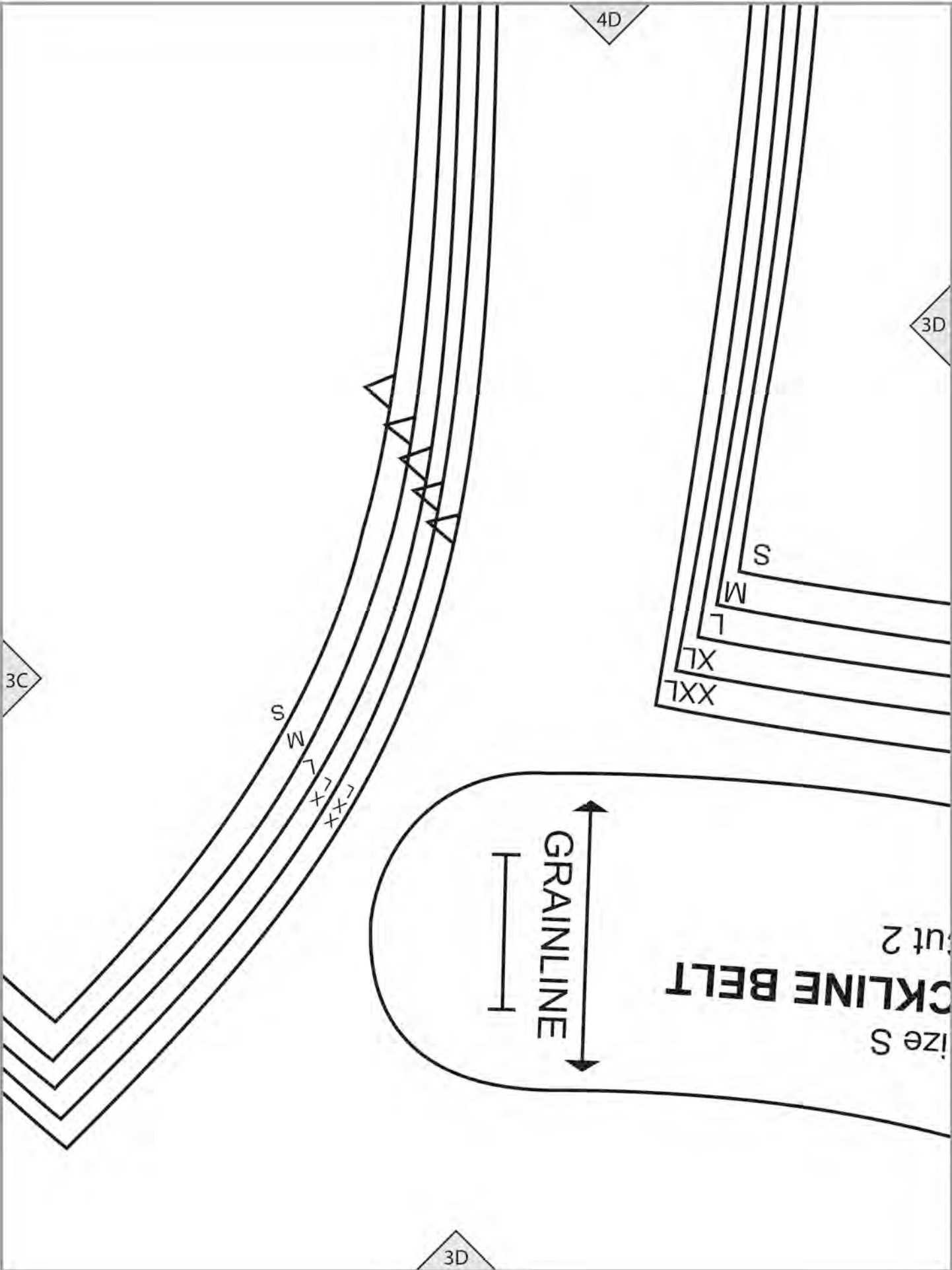
3A

3A









3C

4D

3D

S

M

L

XL

XXL

S

M

L

XL

XXL

GRAINLINE

CKLINE BELT  
ut 2  
ize S

3D

COAT (E)

4E

3D

3E

S

W

T

TX

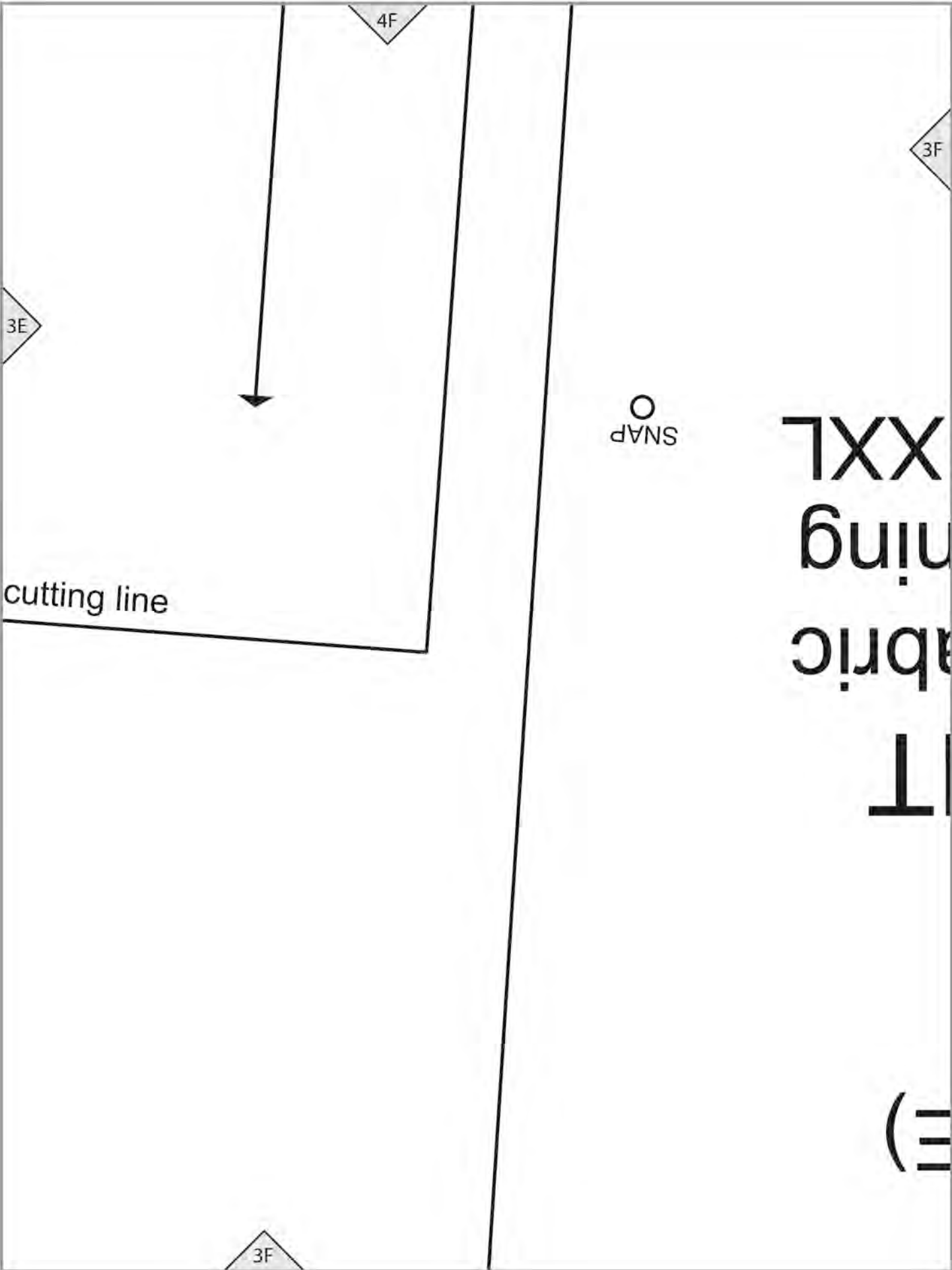
TXX

E5

RIGHT NE  
S

23

3E

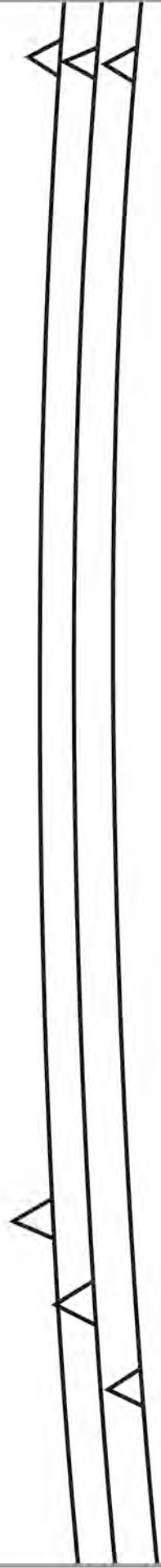


COAT (1  
E5  
FRON  
Cut 2 of fa  
Cut 2 of li  
Size S, L,

3F



4G



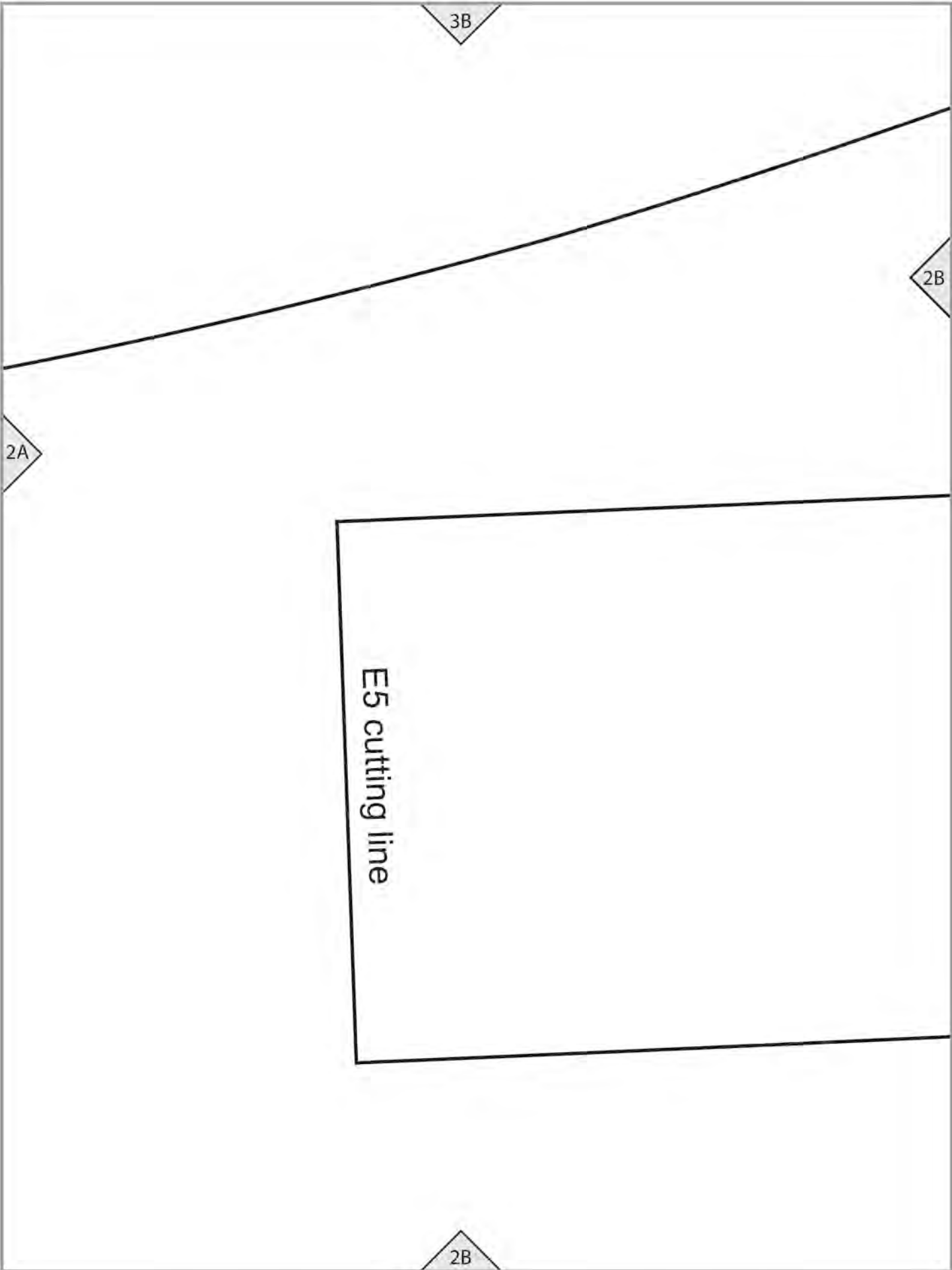
3G

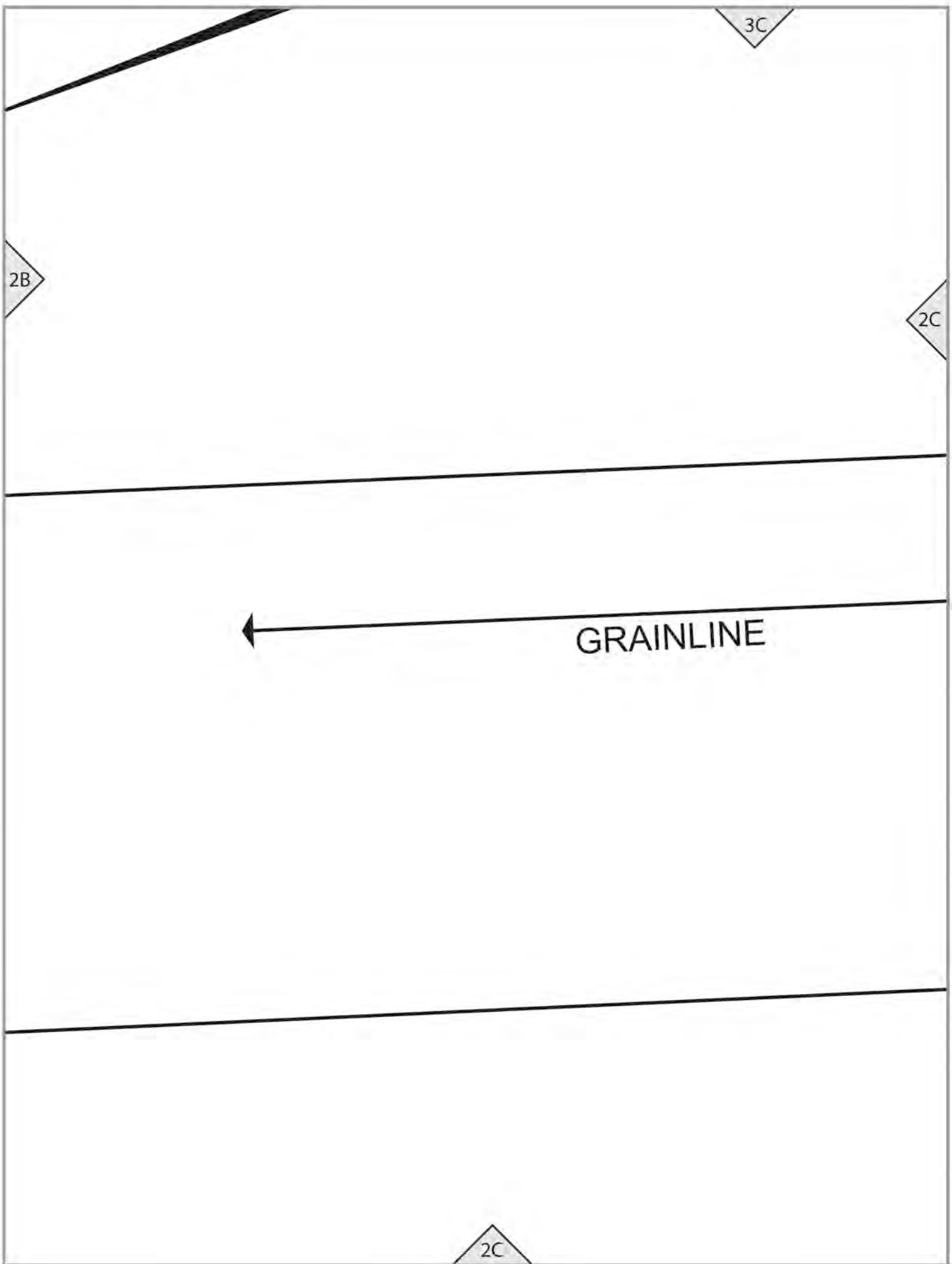


3A

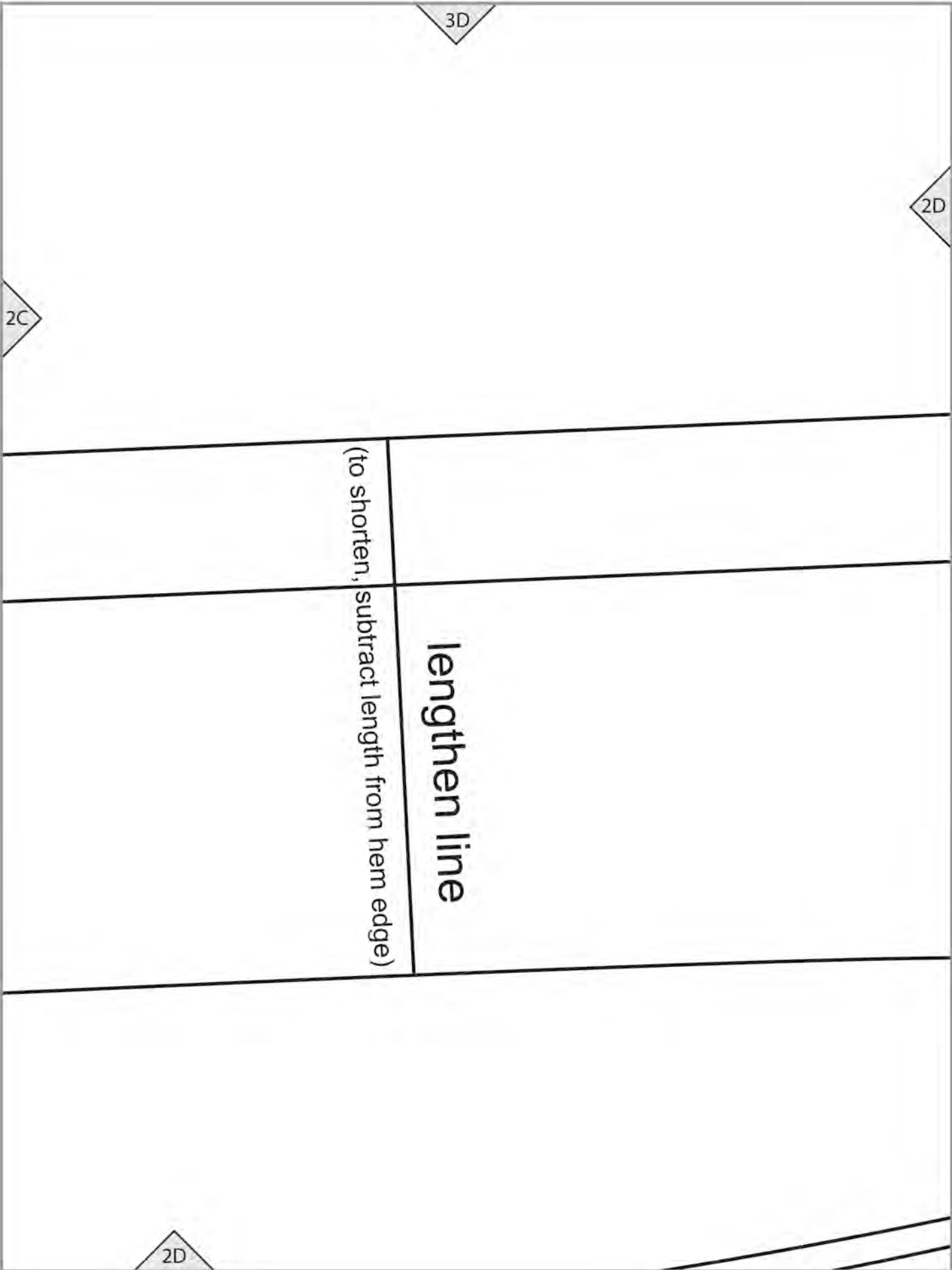
2A

2A









2C

3D

2D

(to shorten, subtract length from hem edge)

lengthen line

2D

3E

COAT (E)

S

2D

2E

Cut 2 of fabric  
Cut 2 of interfacing

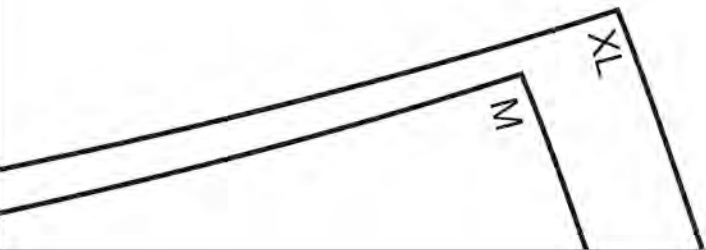
Size L, XL, XXL

4

2E

XL

M



3F

S

T

TXX

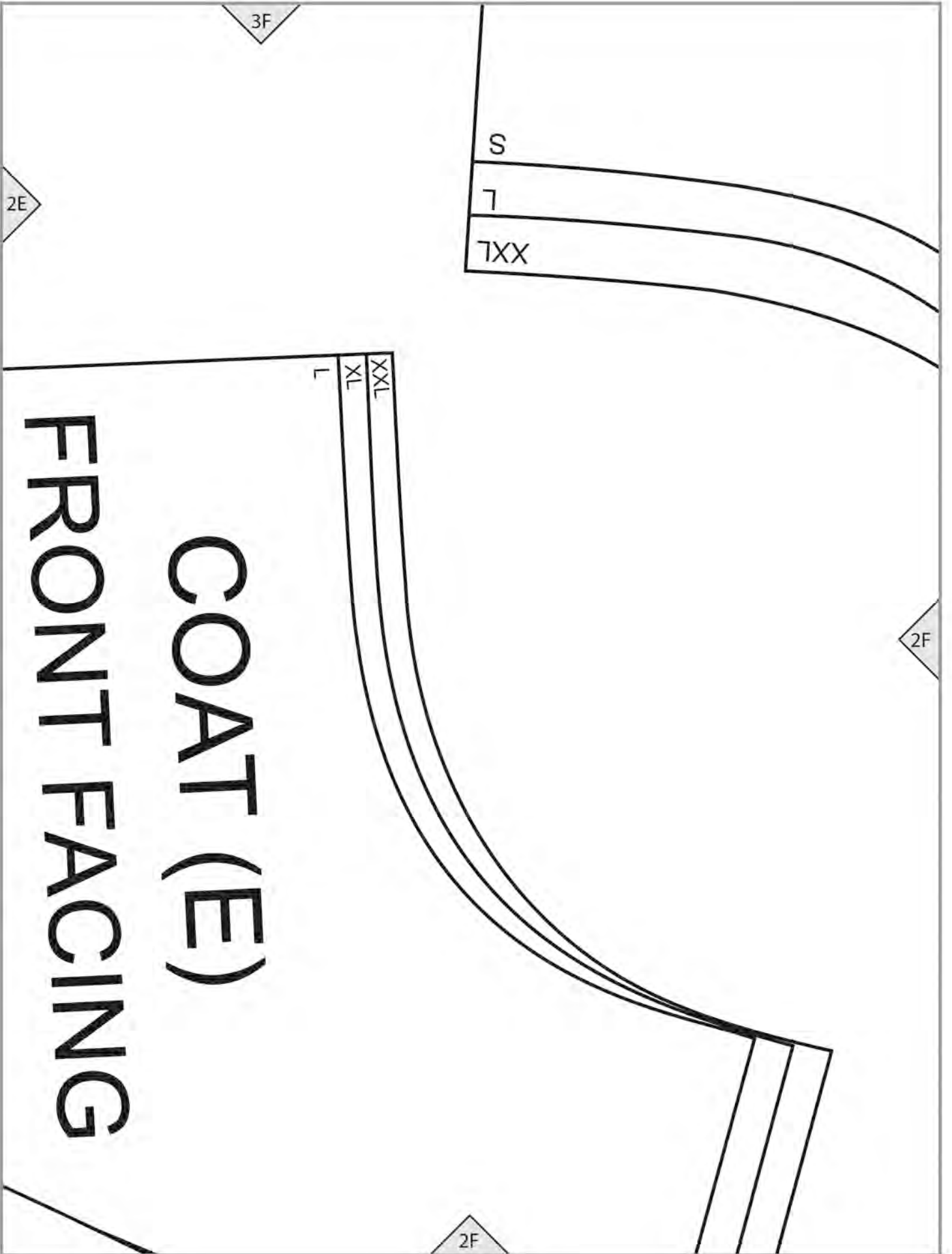
2E

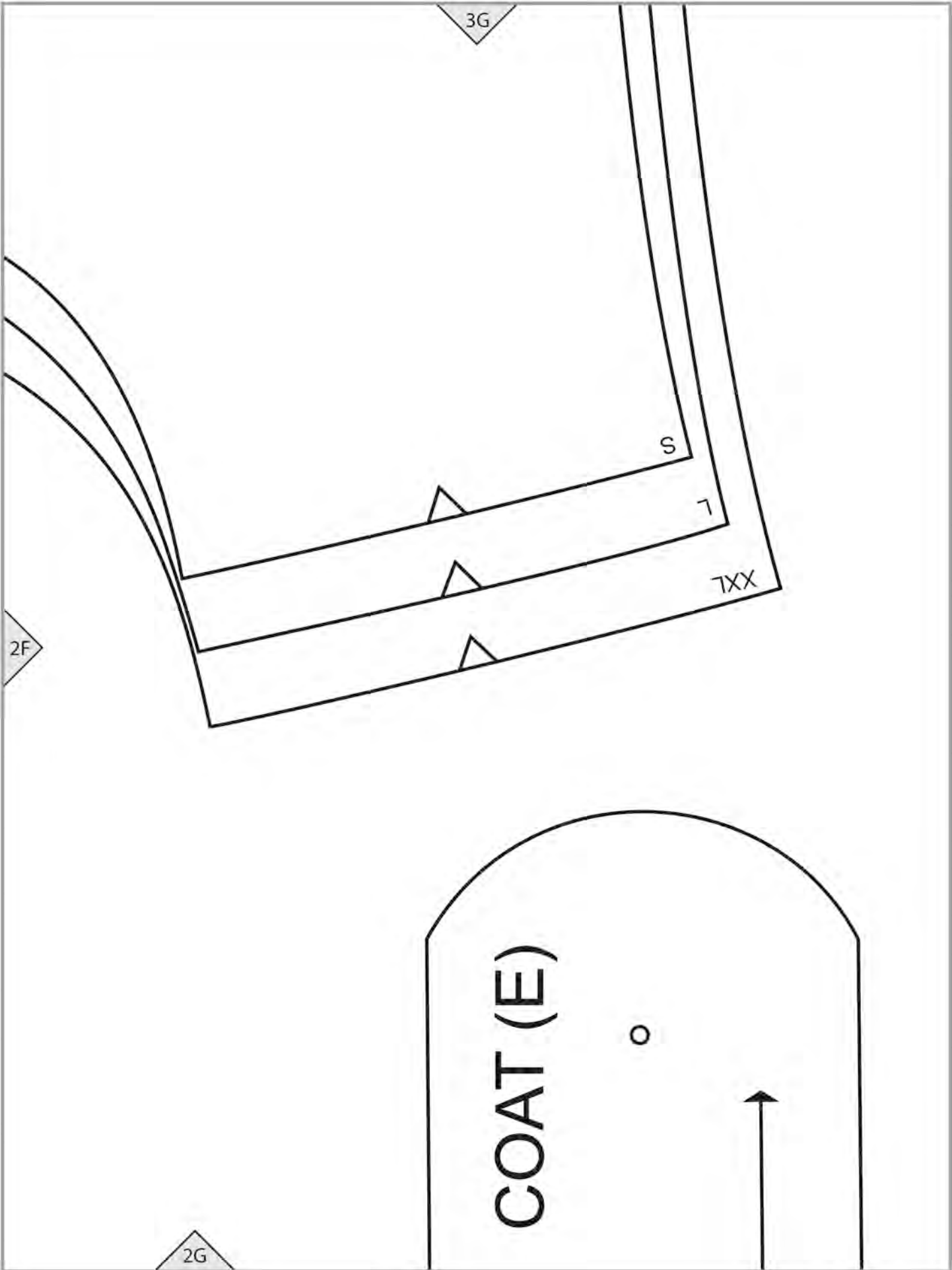
2F

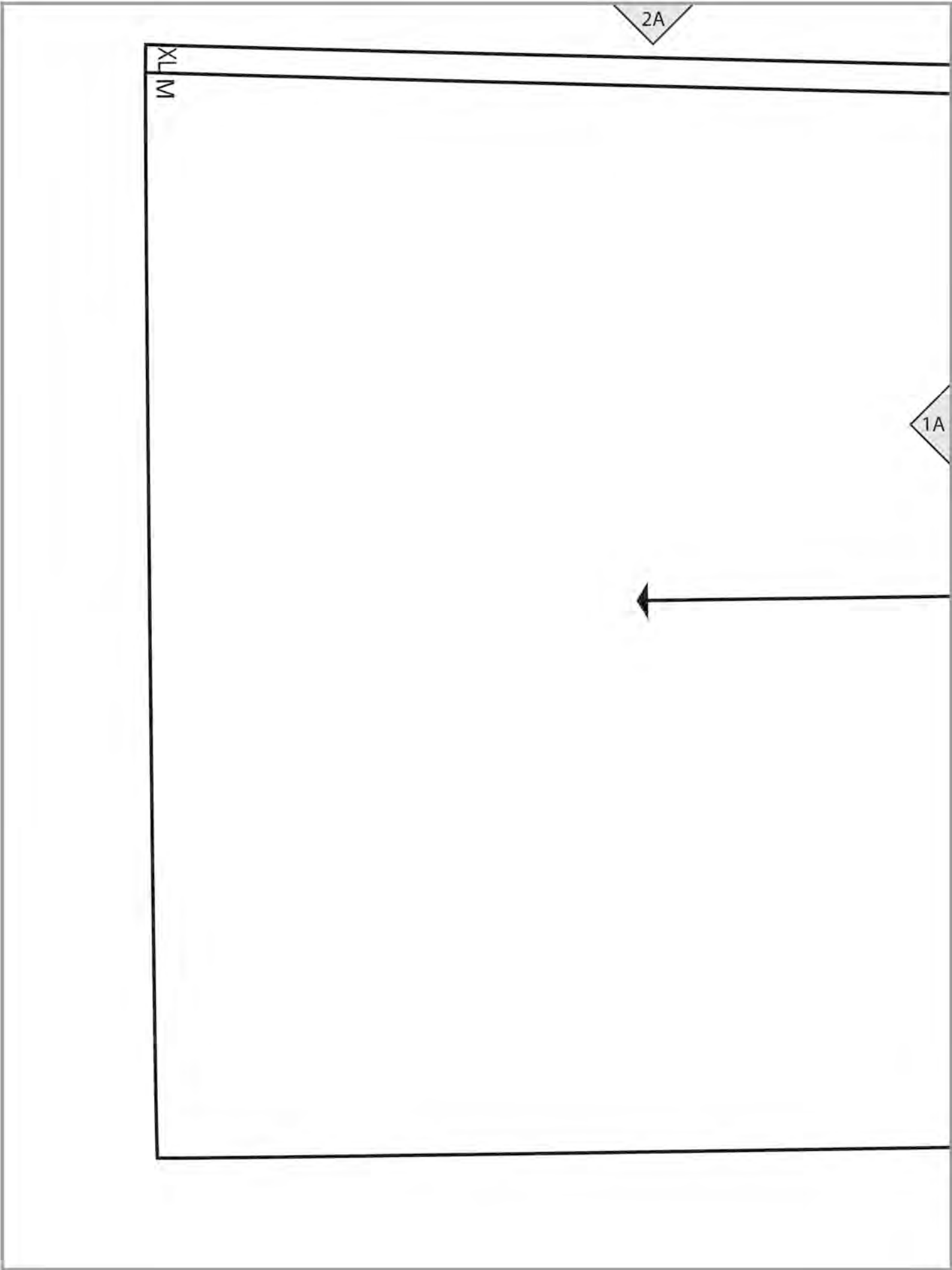
L  
XL  
XXL

2F

# FRONT FACING COAT (E)







2B

MO  
TX  
M

1A

1B

GRAINLINE

# Size M, XL

18

lengthen line

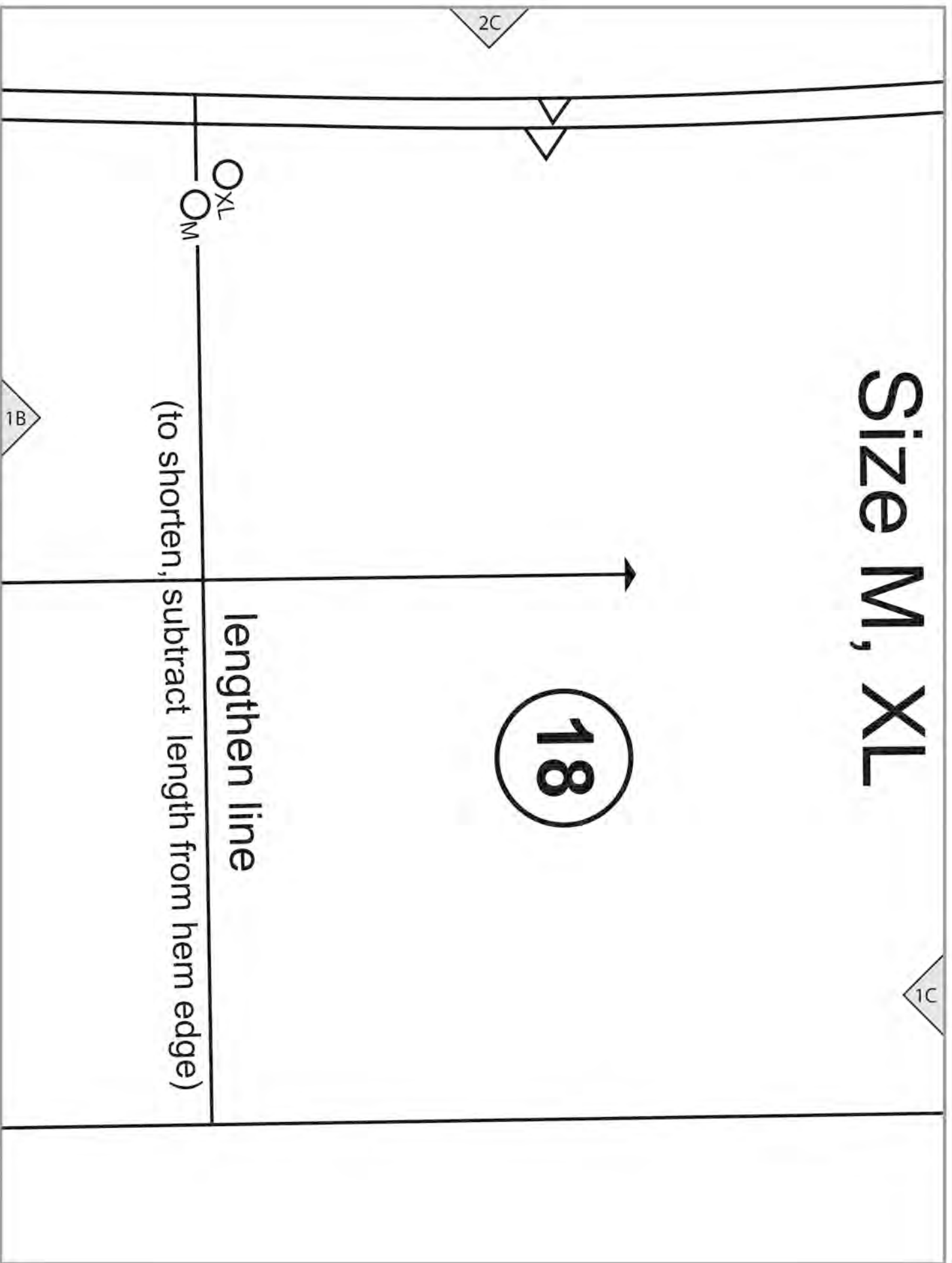
(to shorten, subtract length from hem edge)

O<sub>M</sub>  
O<sub>XL</sub>

1B

2C

1C



1D

COAT (E)

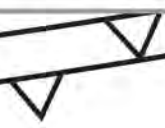
E5

FRONT

Cut 2 of fabric

Cut 2 of lining

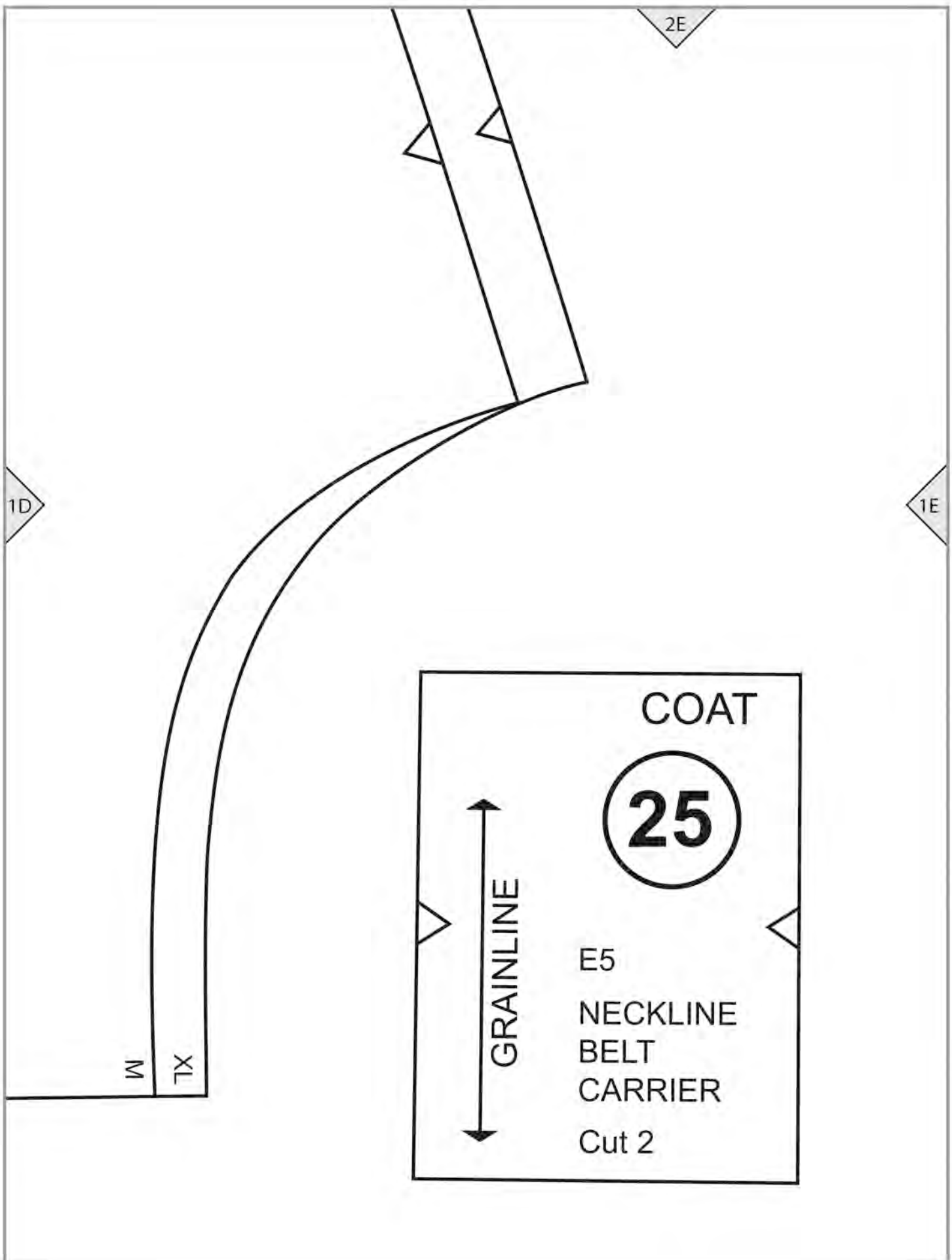
2D



1C

SNAP  
O





2F

7

XL

XXL

XXL

1E

1F

COAT (E)

23

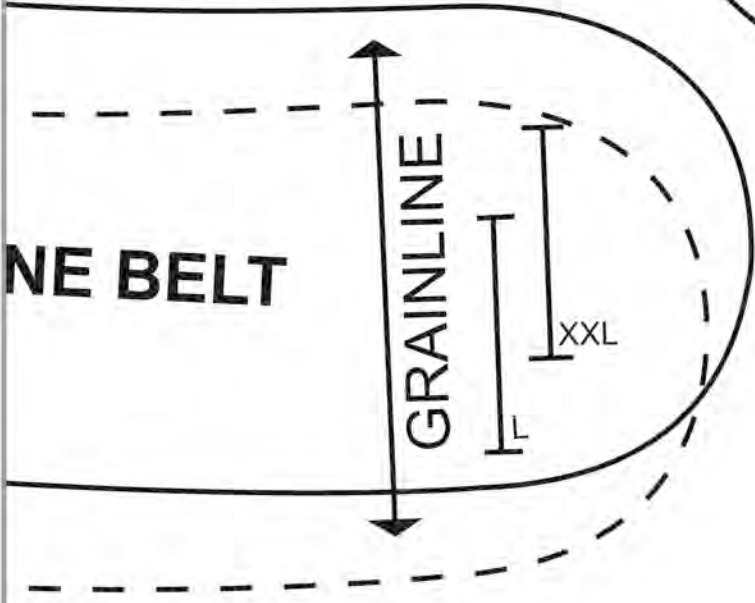
Size L, XXL

RIGHT NECKLI

Cut 2

1F

2G



NE BELT

22

E5 BELT

Cut 2 of fabric

Cut 1 of interfacing

