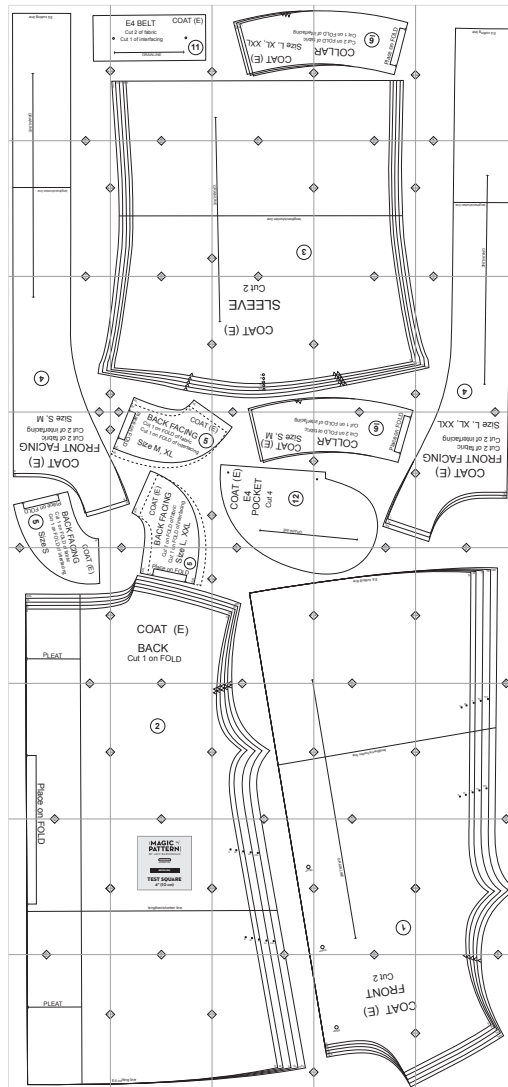


E4. Edith



Copyright ©2014 by Amy Barickman

All rights reserved. Amy Barickman's patterns may be printed for personal use, but may not be otherwise reproduced—mechanically, electronically, or by any other means, including photocopying—without written permission of the publisher.

Sewing pattern designs for *The Magic Pattern Book* by Amy Barickman are intended for personal use only, and not as the basis for commercial manufacturing.

Workman Publishing, New York • workman.com

E4 cutting line

GRAINLINE



8A

8A

E4 BELT

COAT (E)

Cut 2 of fabric

- Cut 1 of interfacing

○

11



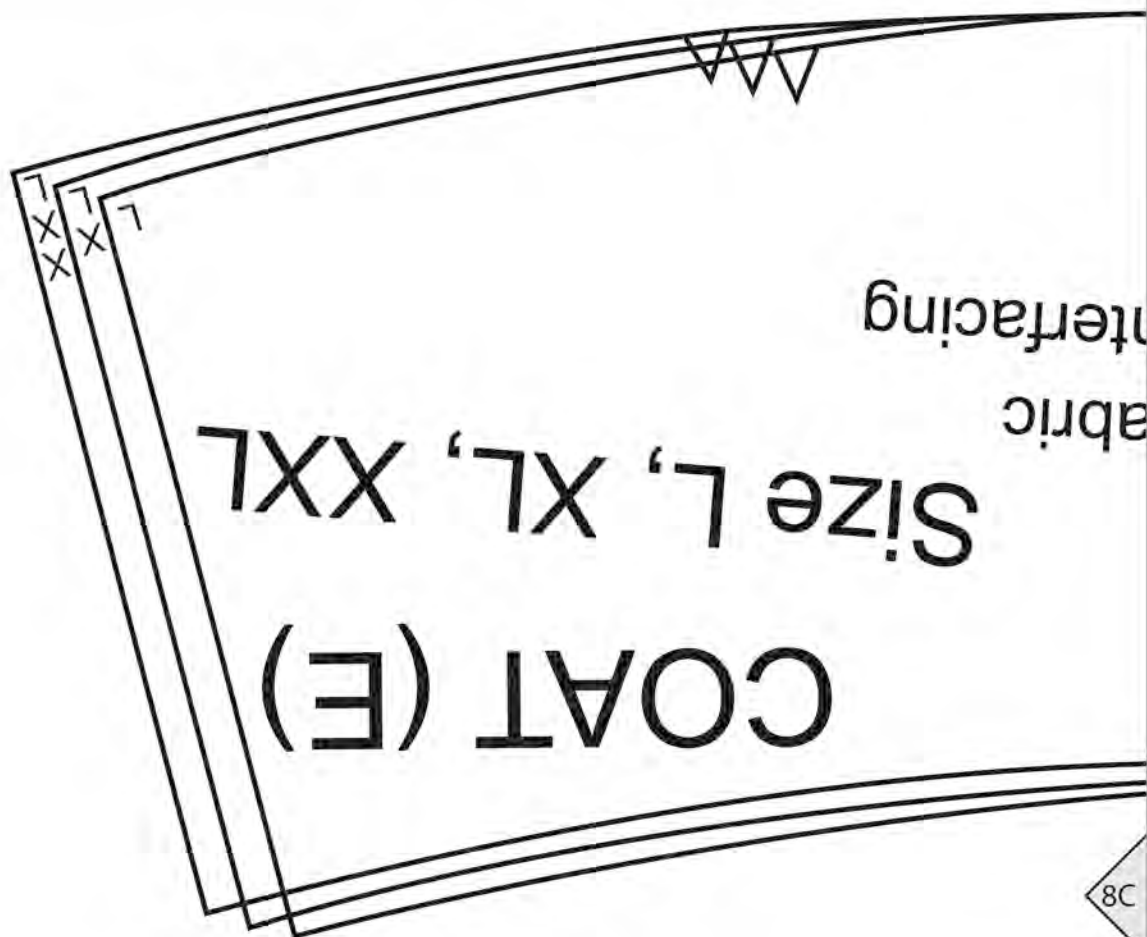
8A

8B

T TX T W S

X
X

8B



8B

8C

8C



COLLAR
Cut 2 on FOLD of f
Cut 1 on FOLD of ir

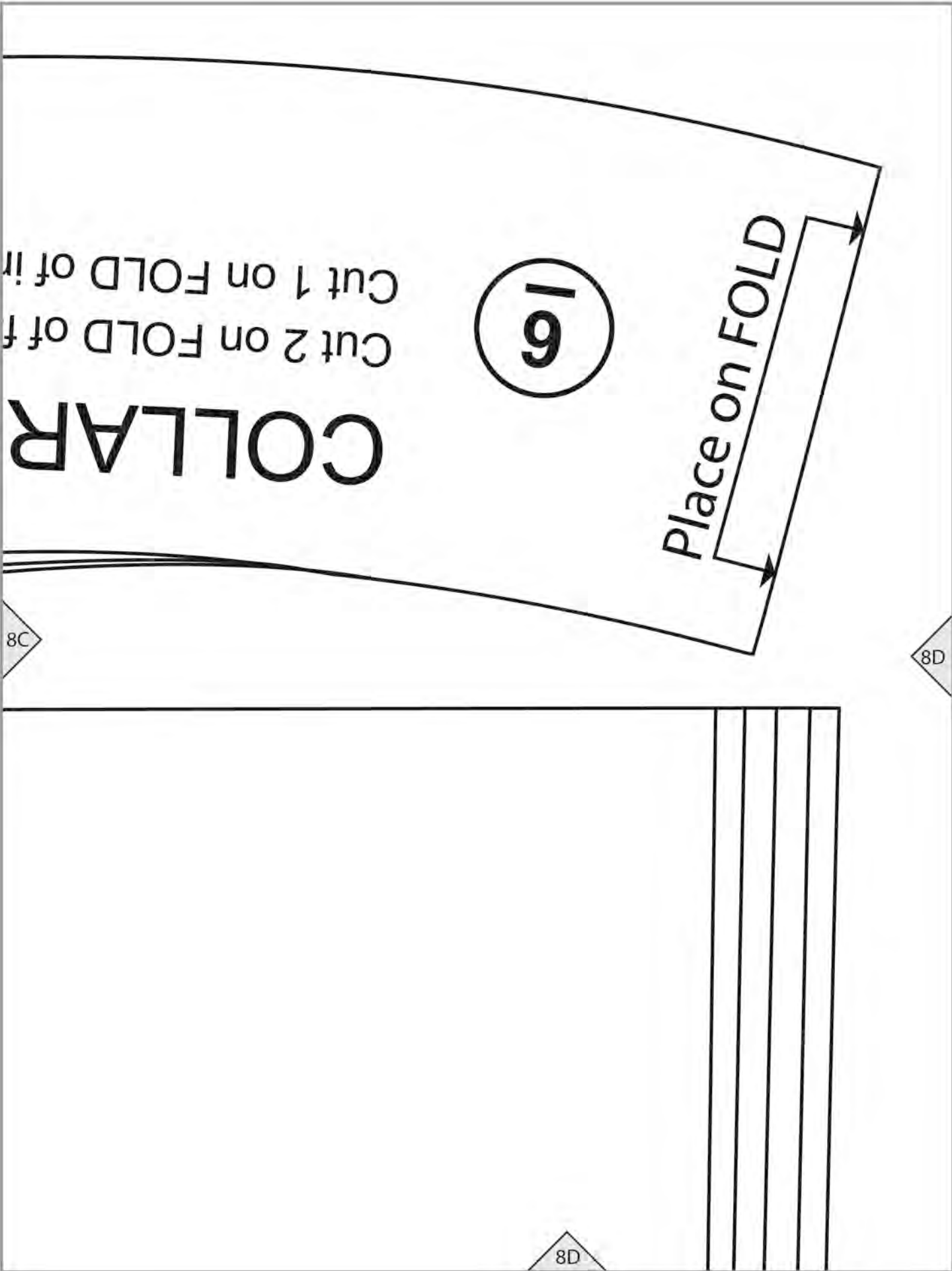
6

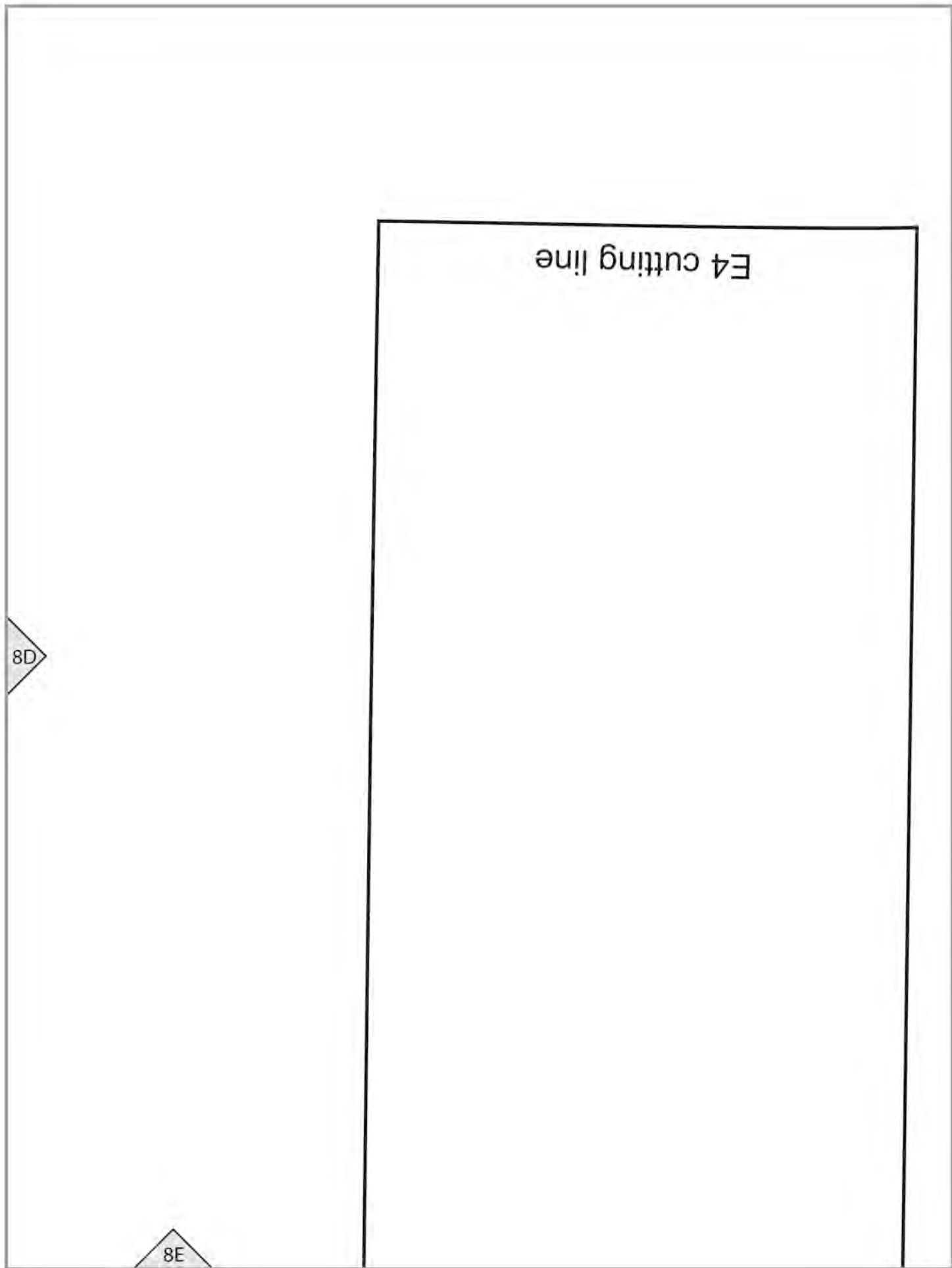
Place on FOLD

8C

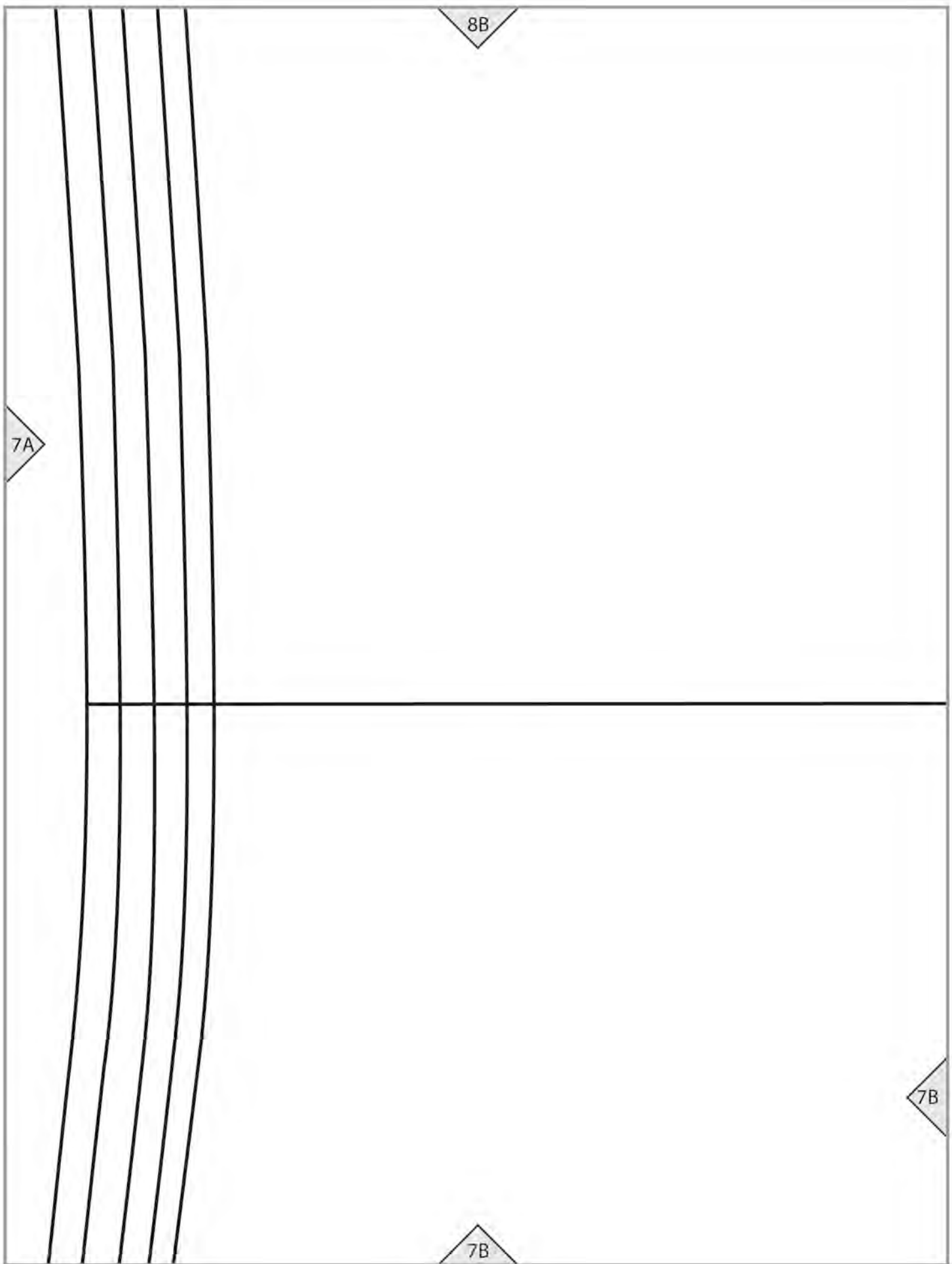
8D

8D





			8A
		lengthen/shorten line	7A



GRAINLINE

8C

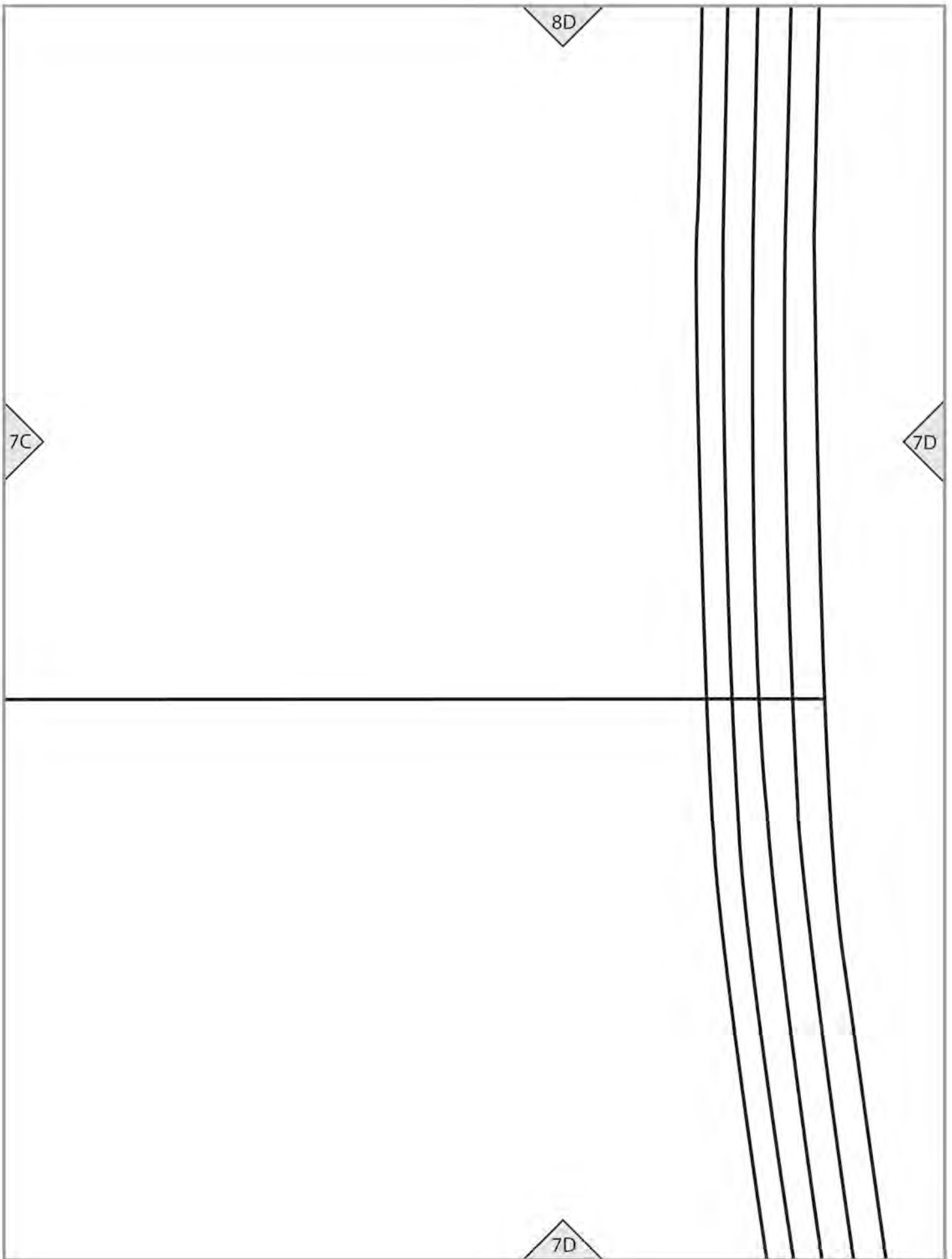
7C

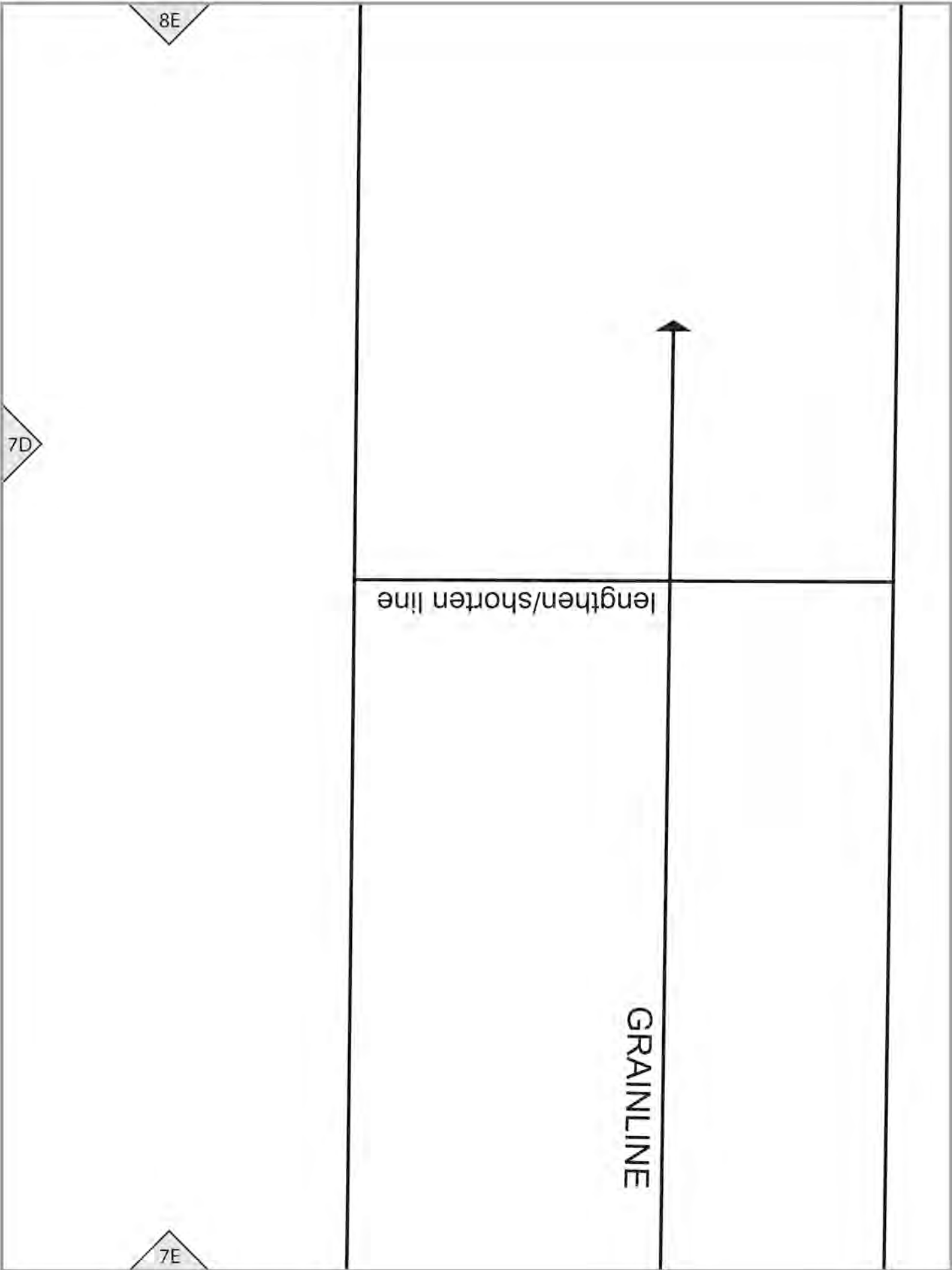
lengthen/shorten line

3

7B

7C





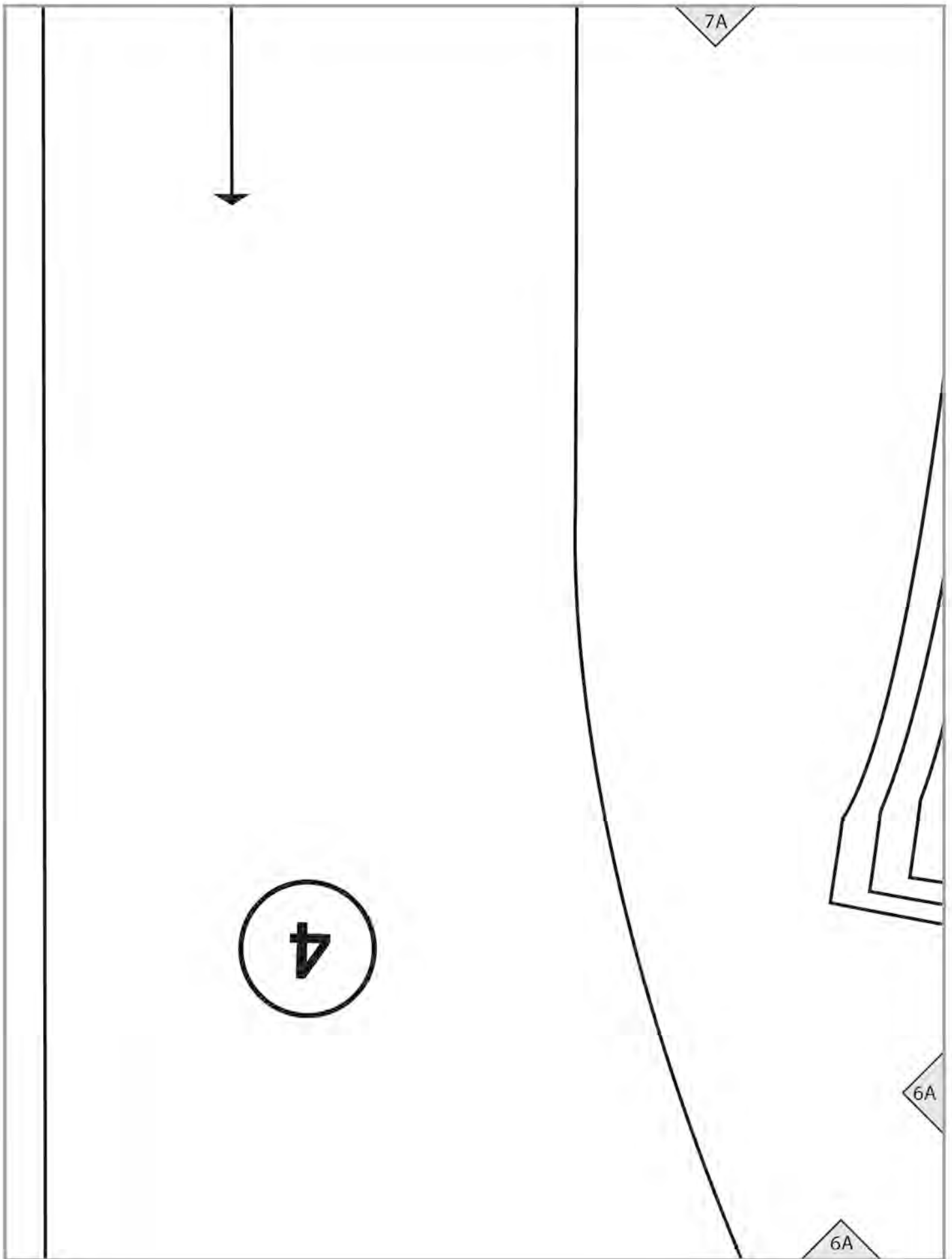
8E

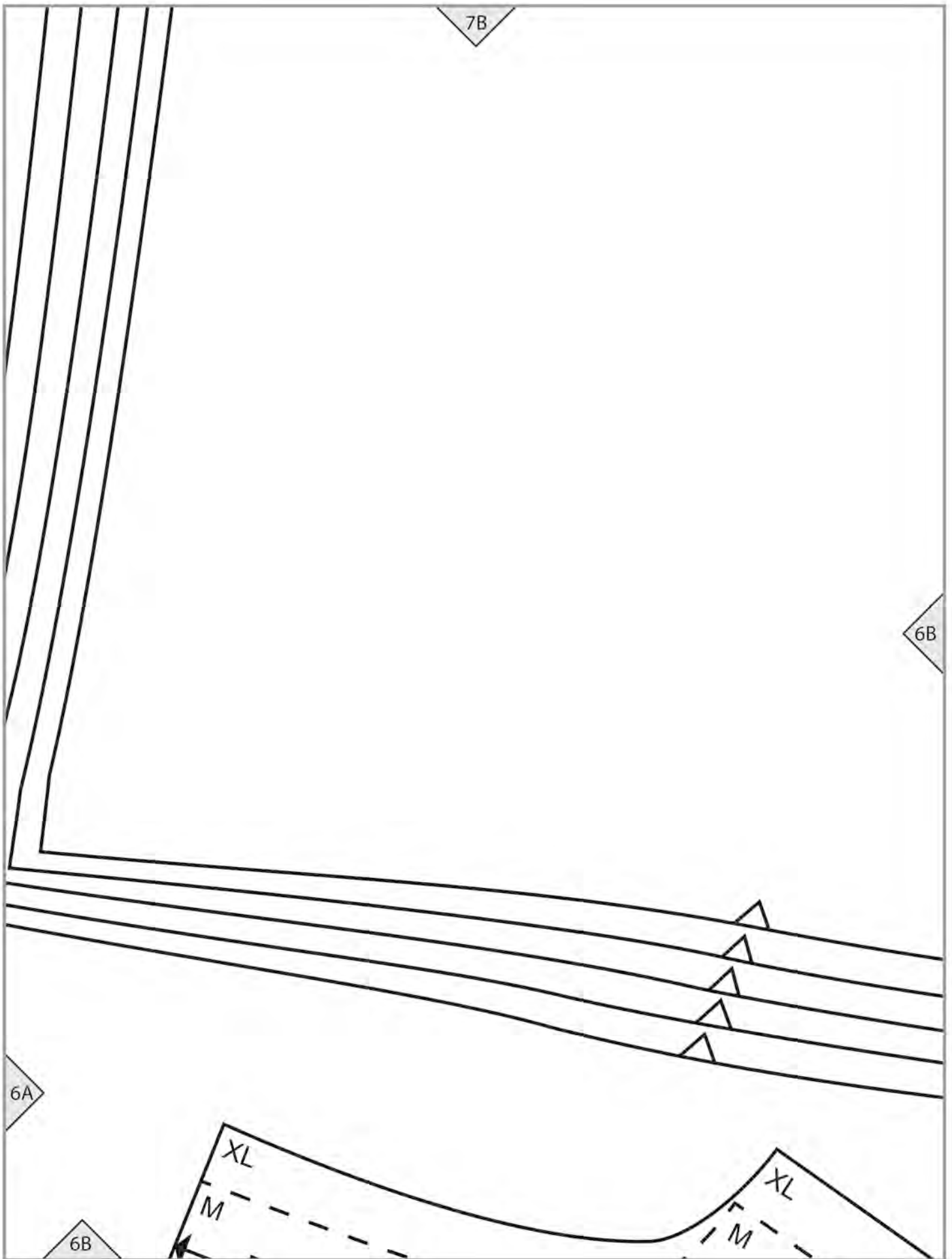
7D

lengthen/shorten line

GRAINLINE

7E





7C

Cut 2

SLEEVE

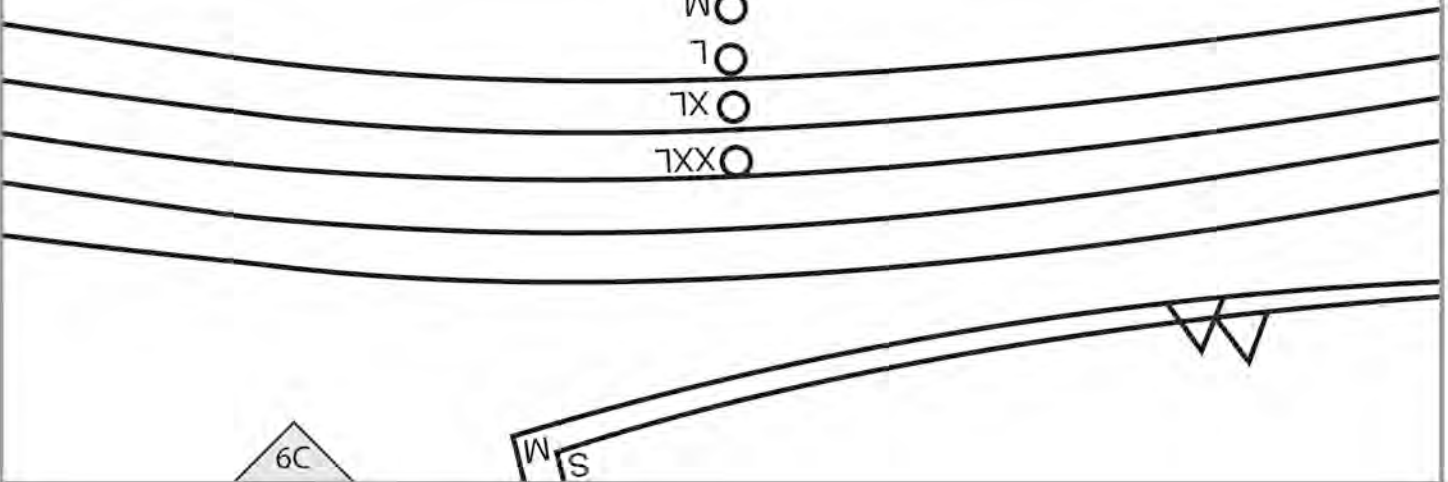
COAT (E)



6B

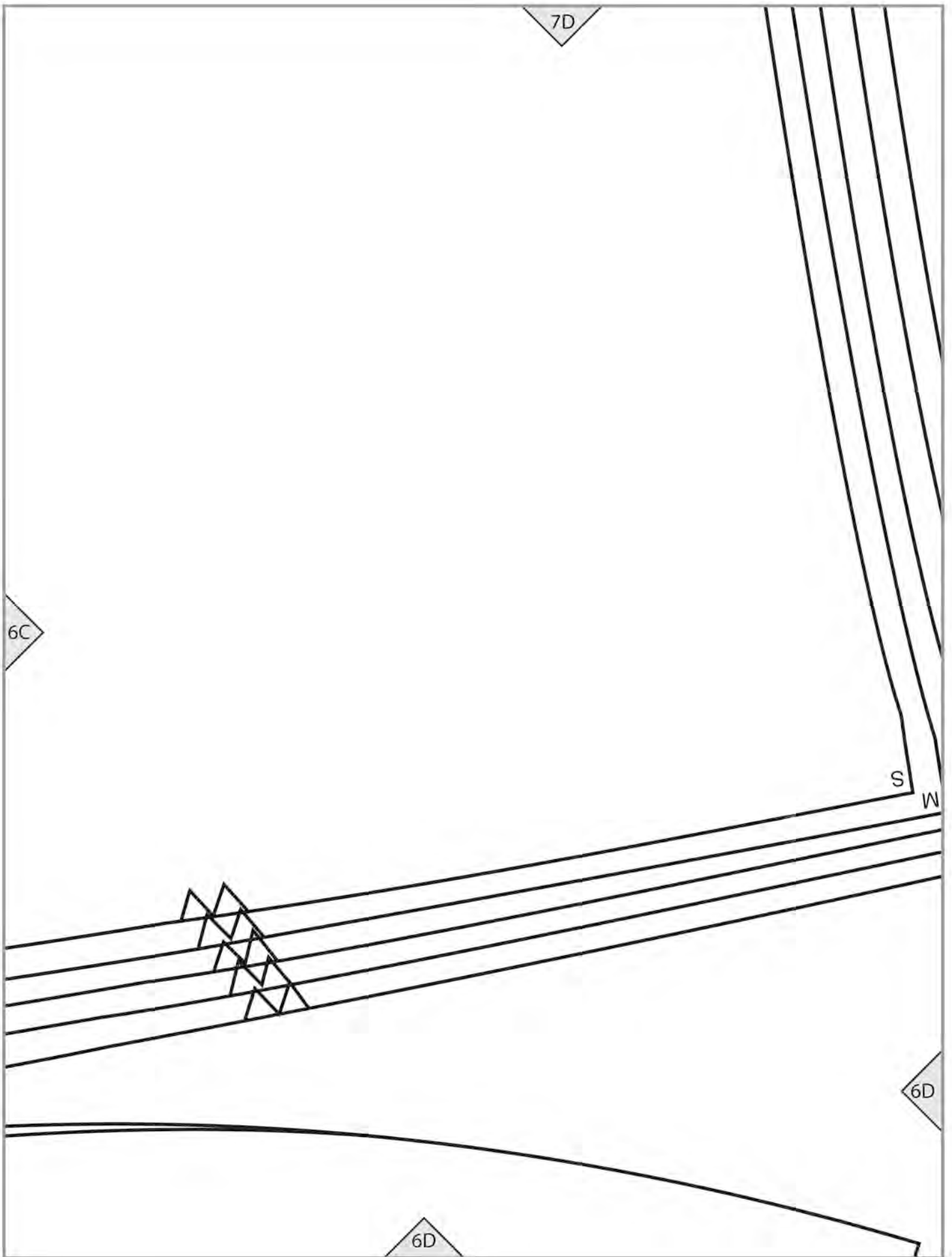
6C

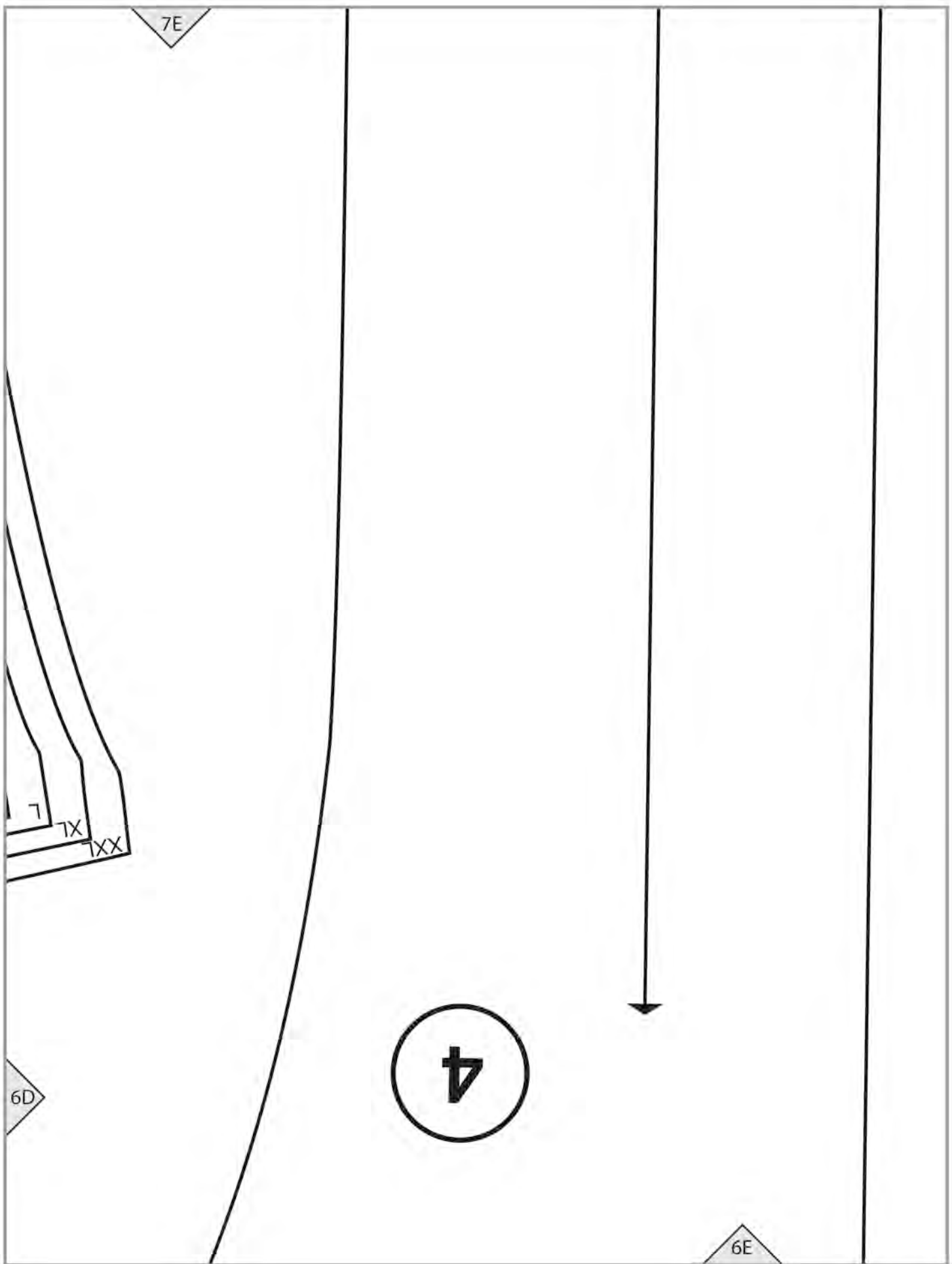
SO
M
L
XL
XXL



6C

SM





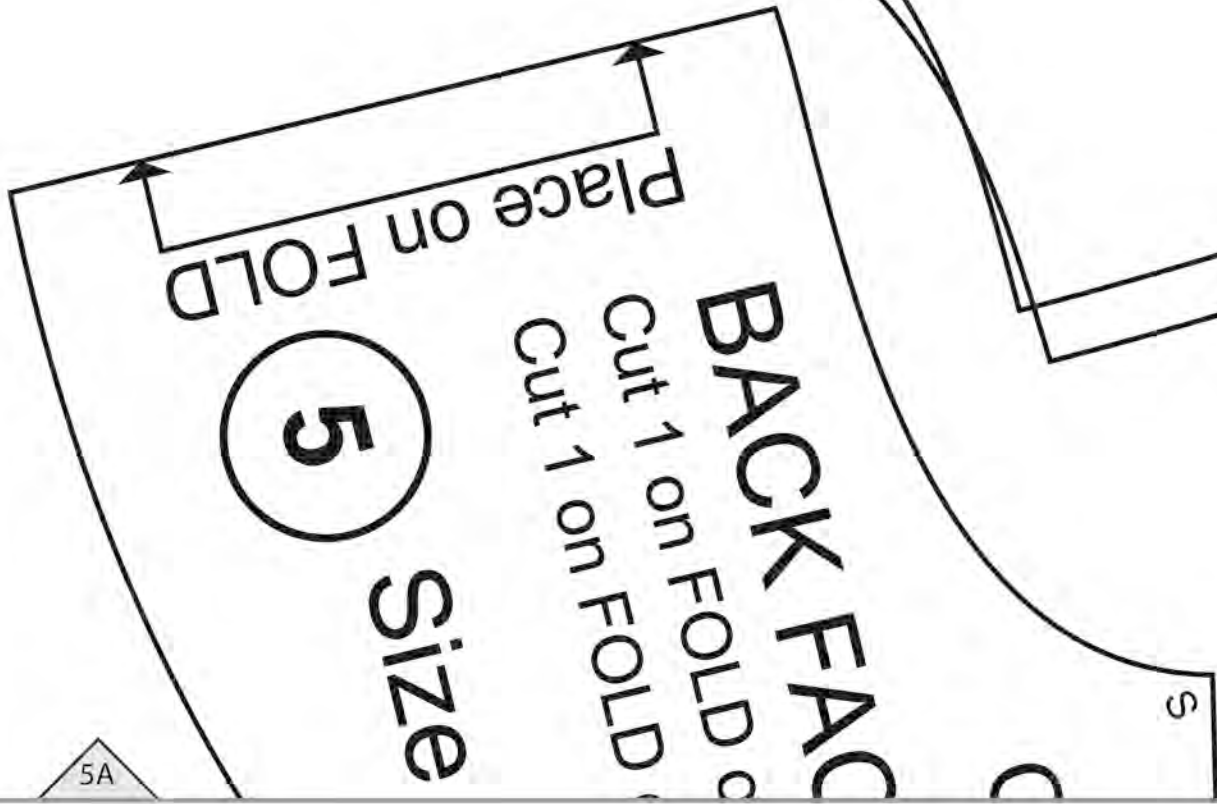
COAT (E) FRONT FACING

Cut 2 of fabric
Cut 2 of interfacing
Size S, M

5A

6A

S
M



6B

5A

Place on FOLD

BACK FACING

Cut 1 on FOLD of fabric
Cut 1 on FOLD of interfacing

COAT (C)

5

Size M, XL

XL

M

S

M

XXL

COAT (E) BACK FACING

1 on FOLD of fabric
1 on FOLD of interfacing

L, XXL

5B

5B

terfacing
abric

COAT (E)
Size S, M

5C

COAT (E)

E4
POCKET

Cut 4

12

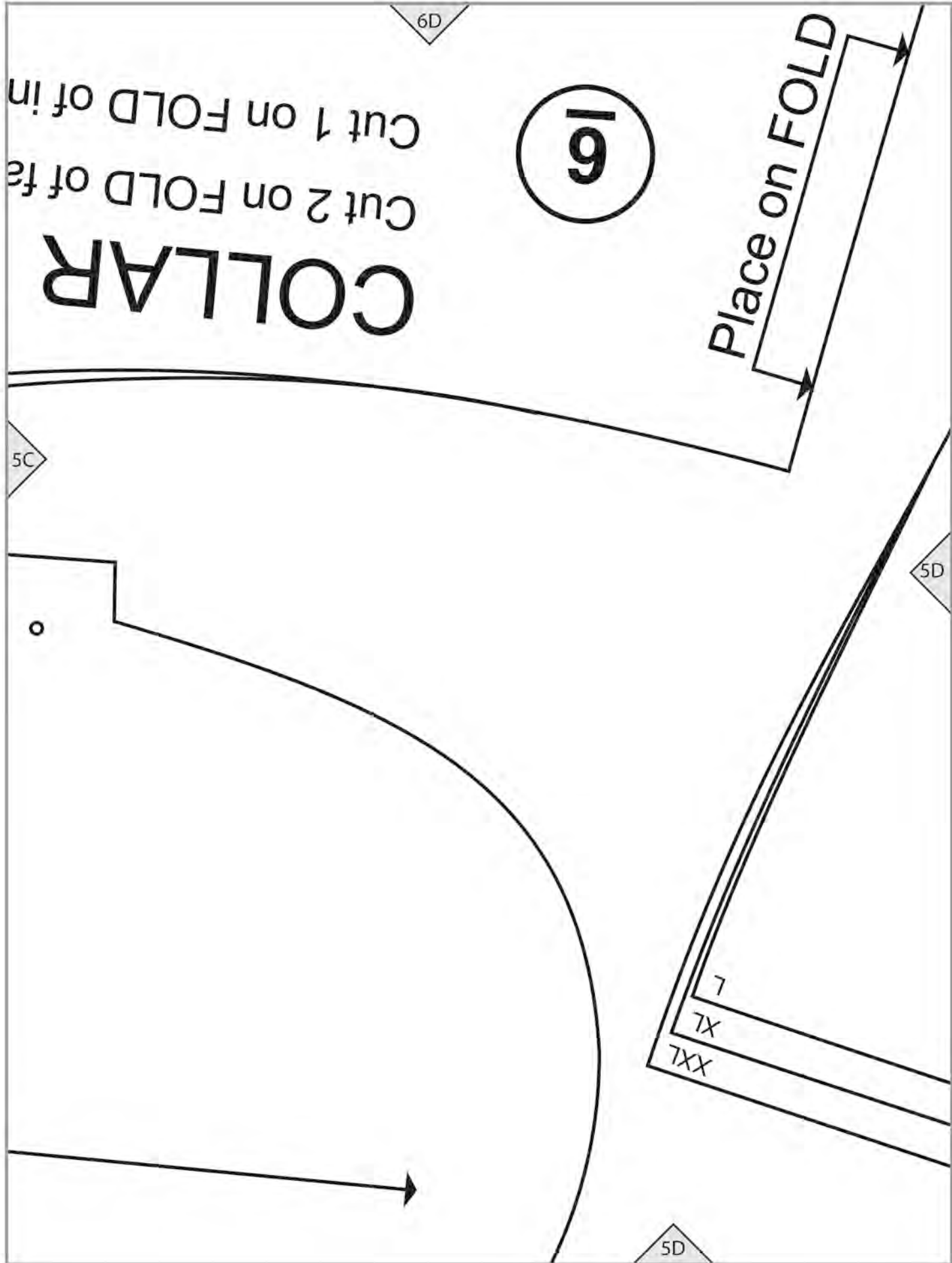
GRAINLINE



6C

5B

5C



6E

Size L, XL, XXL

Cut 2 of interfacing
Cut 2 of fabric

FRONT FACING

COAT (E)

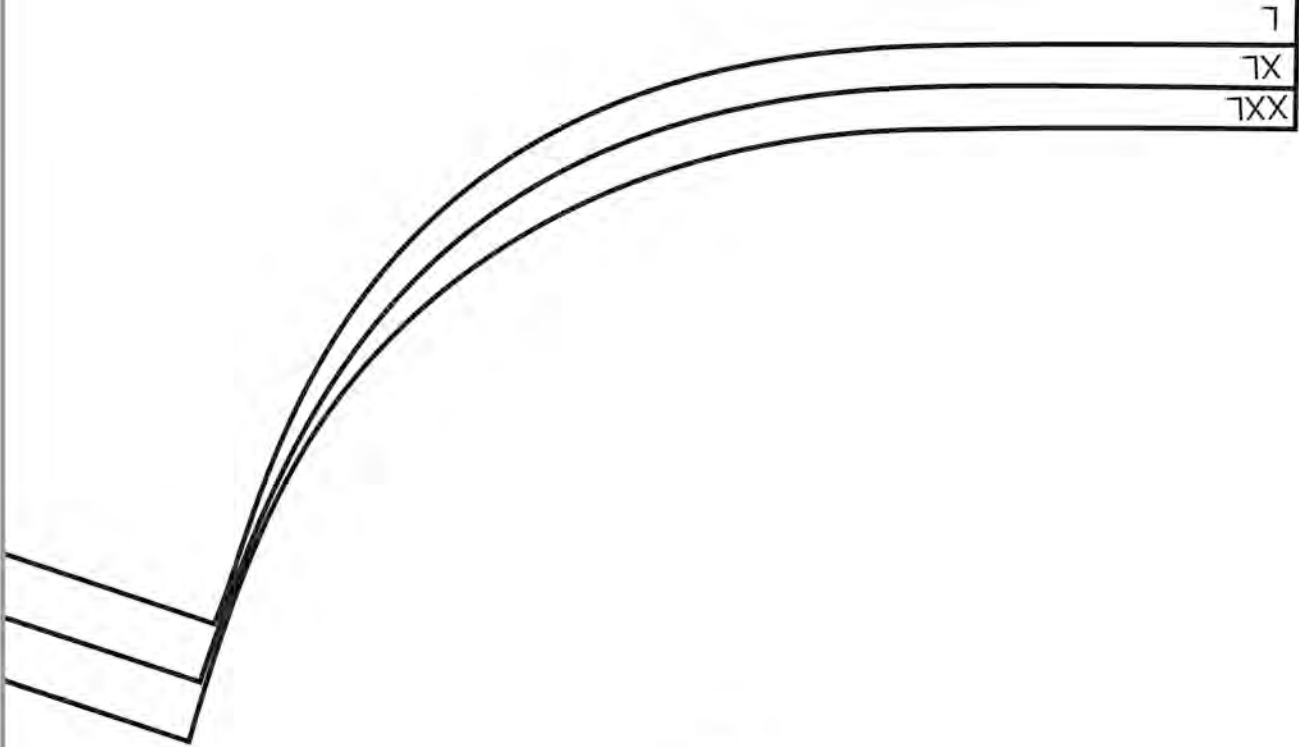
5D

L

XL

XXL

5E



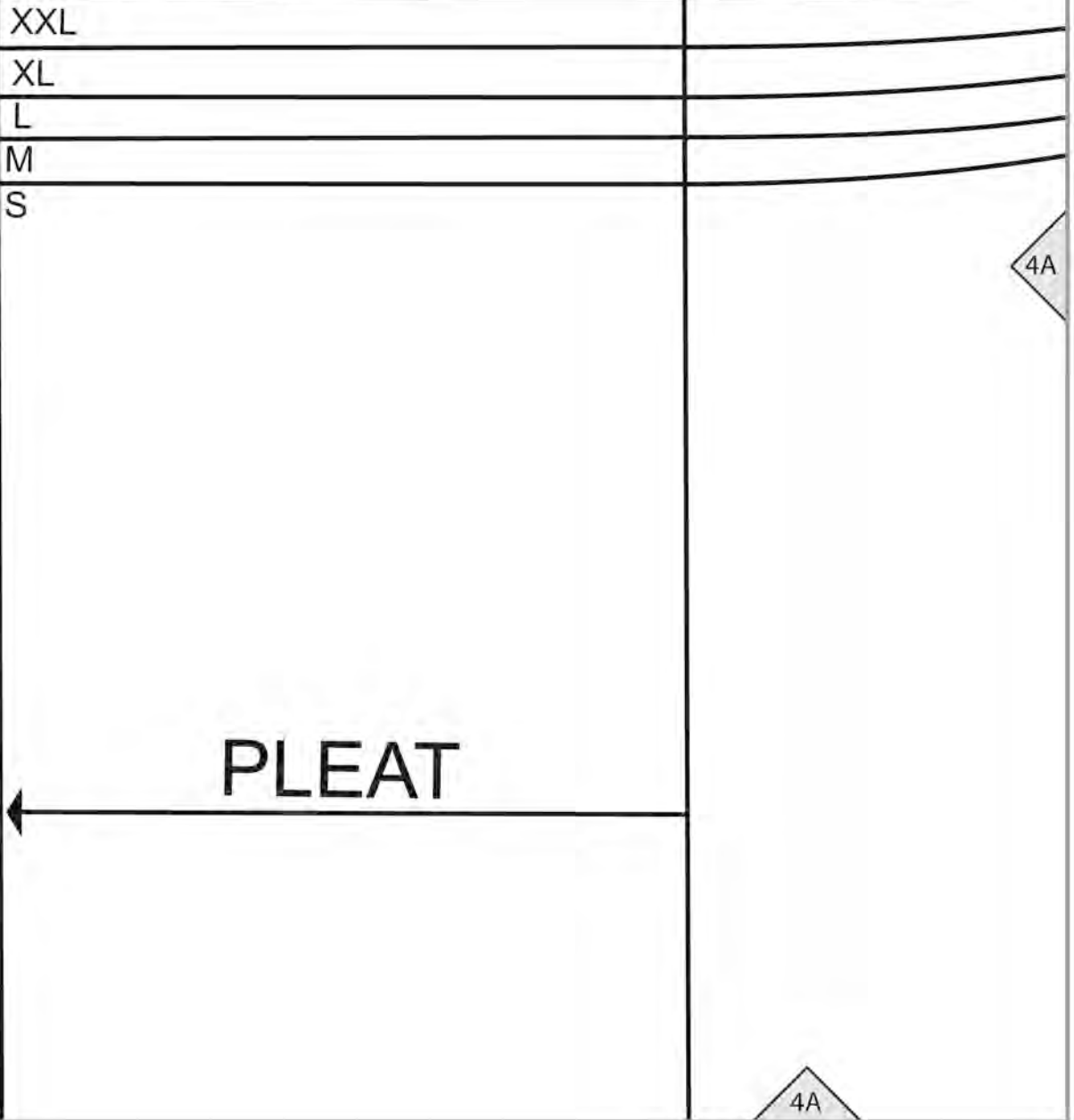
5A

S

f fabric
of interfacing

JING

COAT (E)



5B

Cut
Cut 1 on

Size

5

Place on FOLD

XXL

XXL

4B

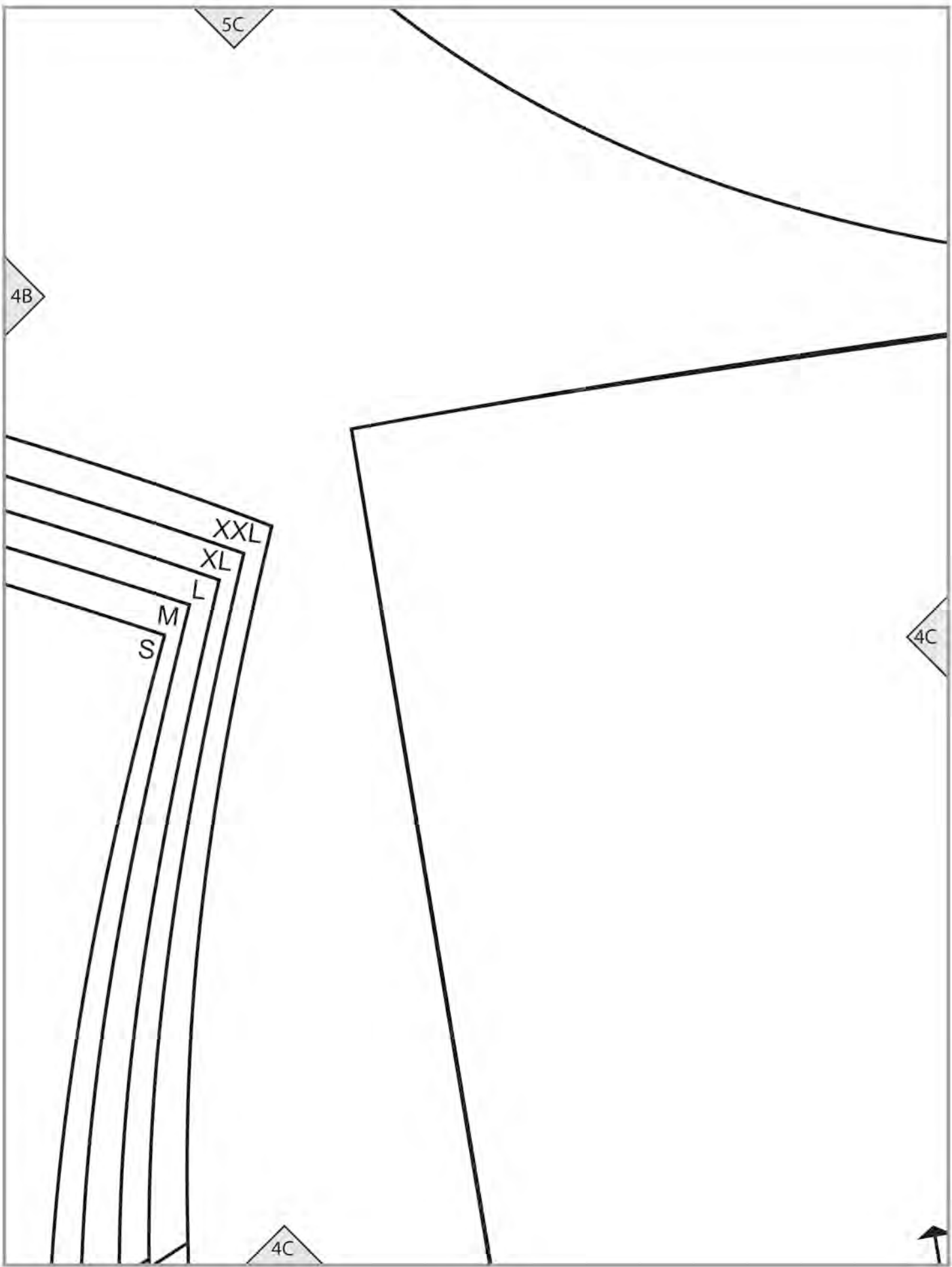
4A

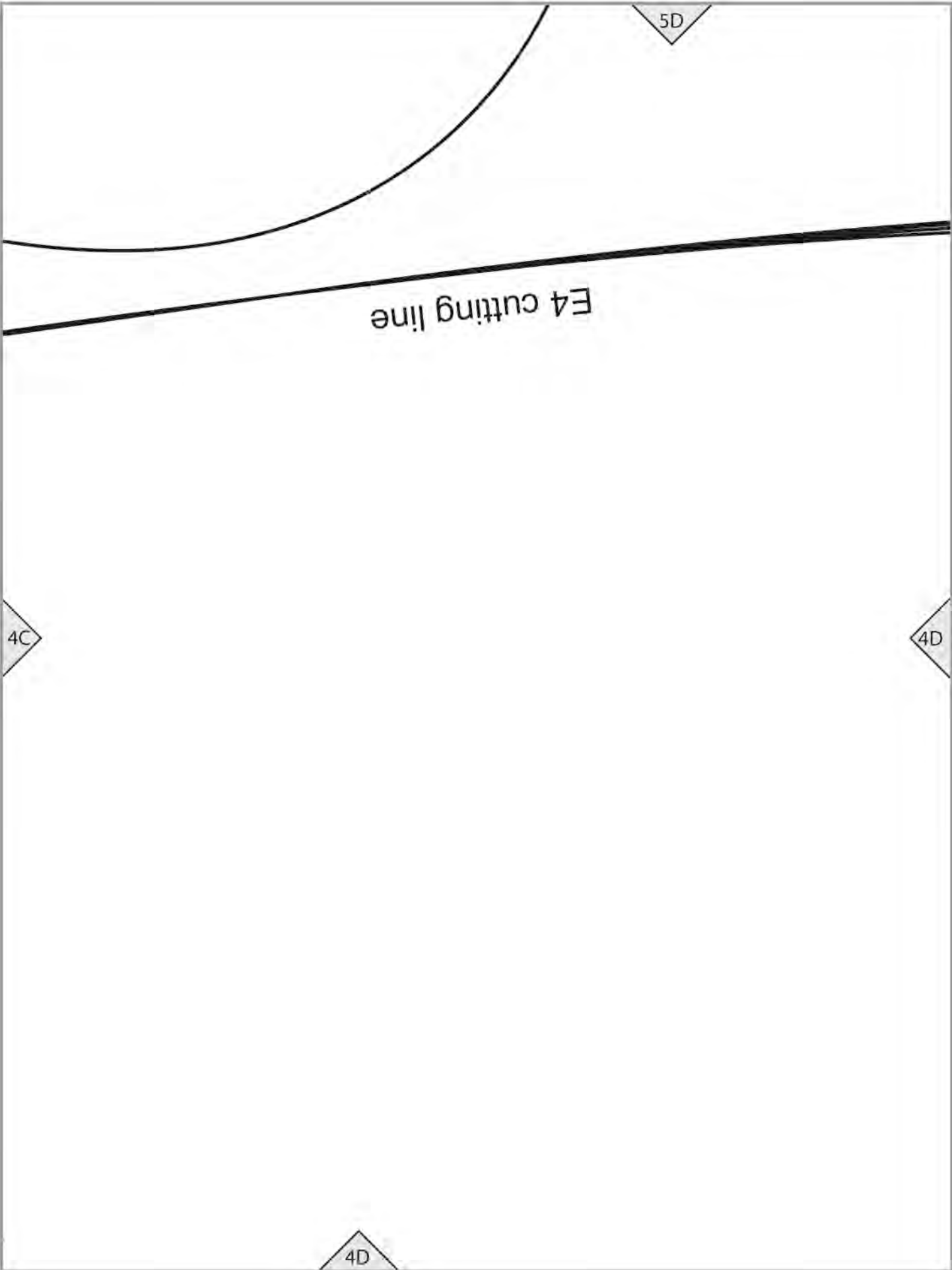
COAT (E)

BACK

Cut 1 on FOLD

4B





5E

S

W

T

TX

TXX

4D

4E

4A

3A

3A

Place on



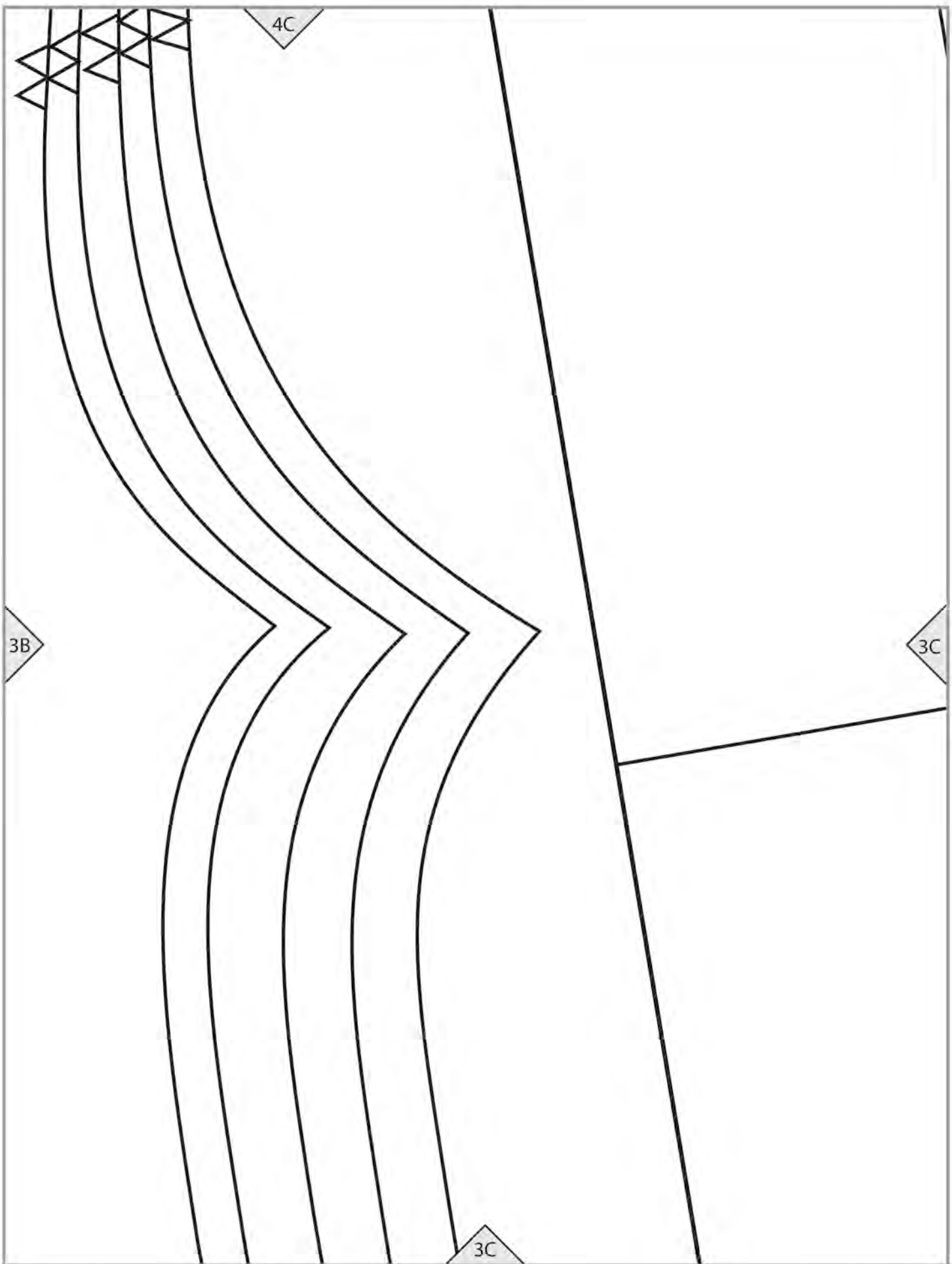
4B

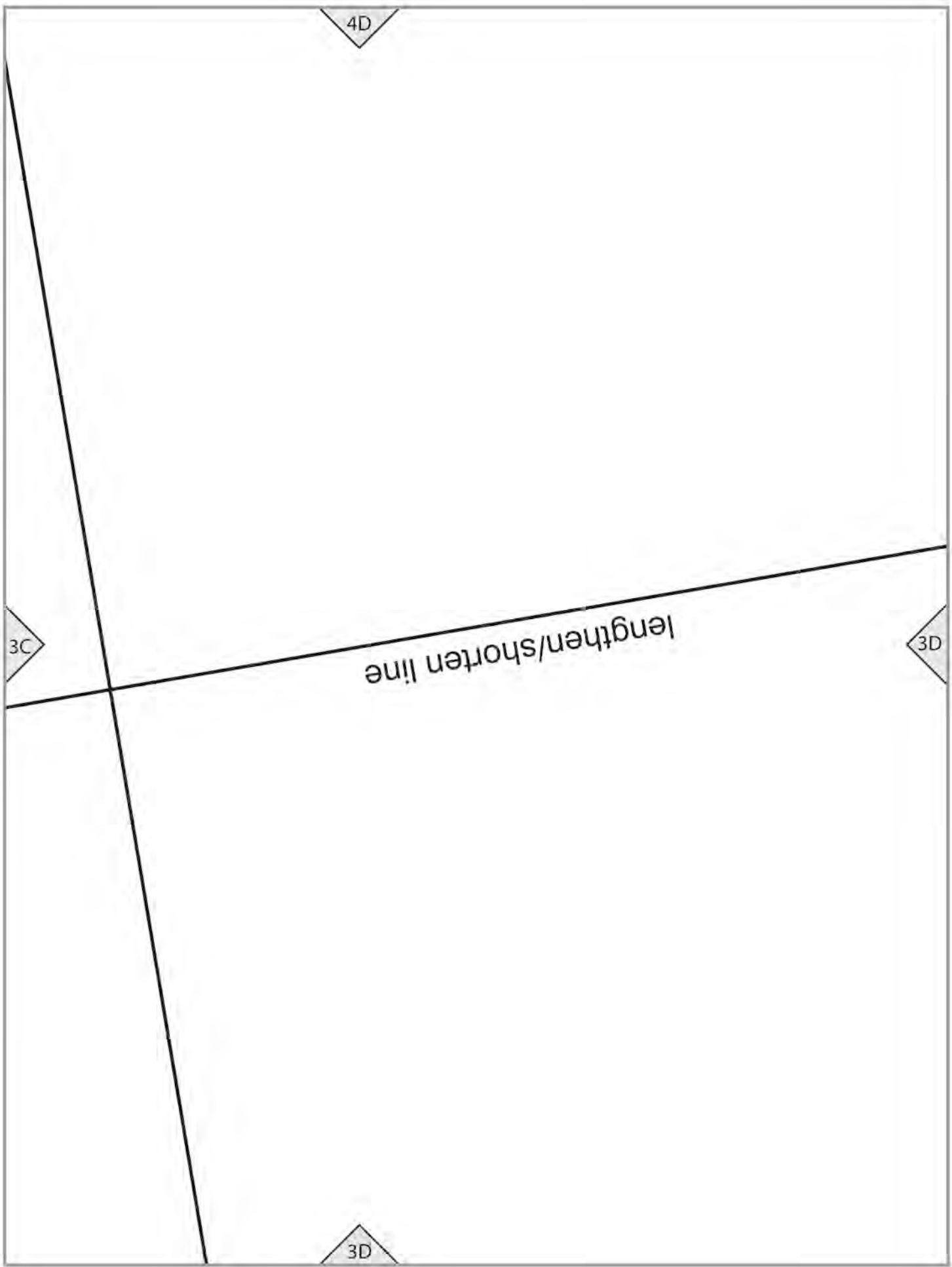
2

3A

3B

3B





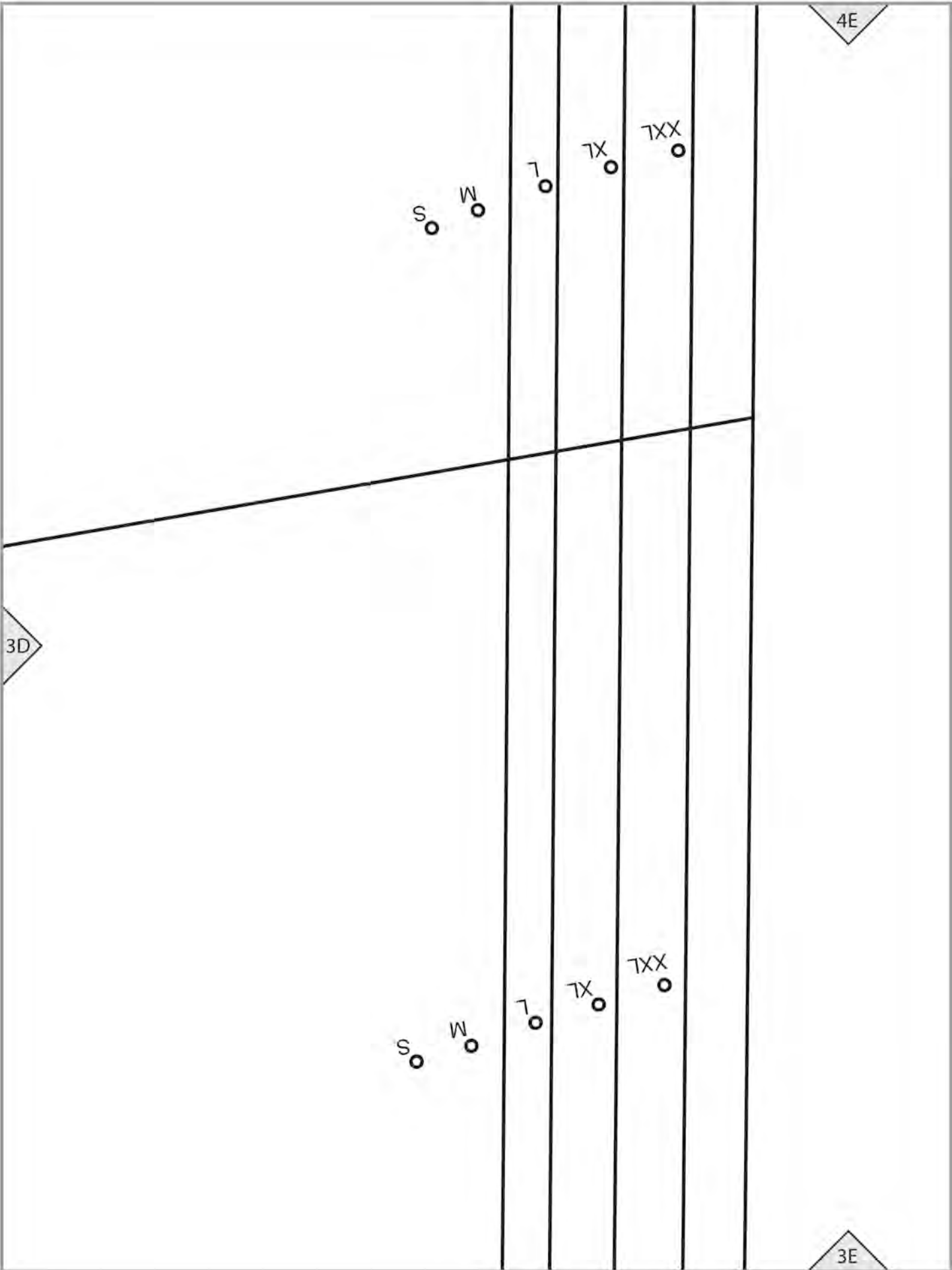
4D

3C

3D

3D

lengthen/shorten line



FOLD

3A

2A

2A



3B

THE **MAGIC** 
PATTERN BOOK

BY AMY BARICKMAN

workman

workman.com

EDITH (E4)

TEST SQUARE

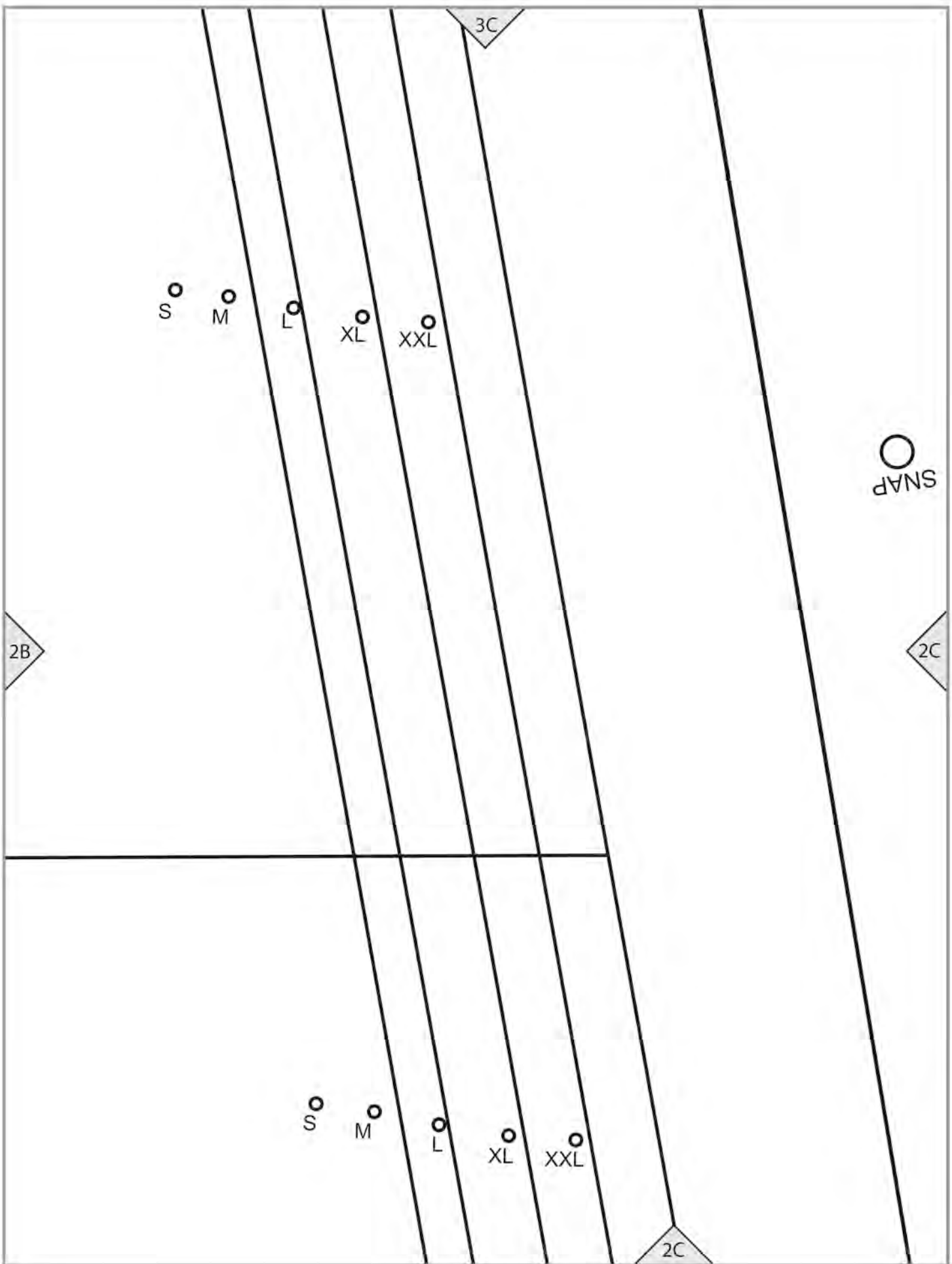
4" (10 cm)

2A

2B

lengthen/shorten line

2B



S

M

L

XL

XXL

3C

SNAP

2B

2C

S

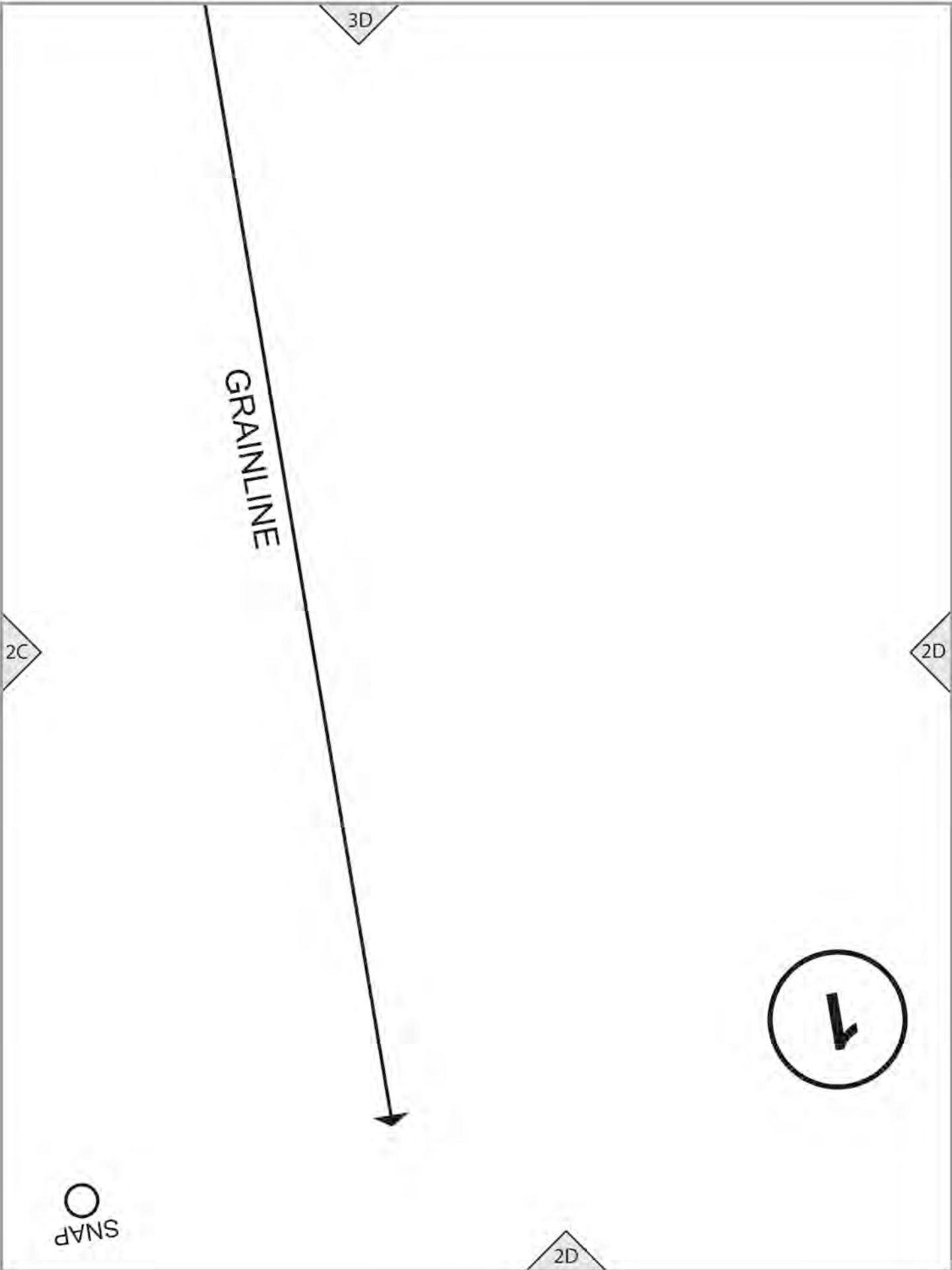
M

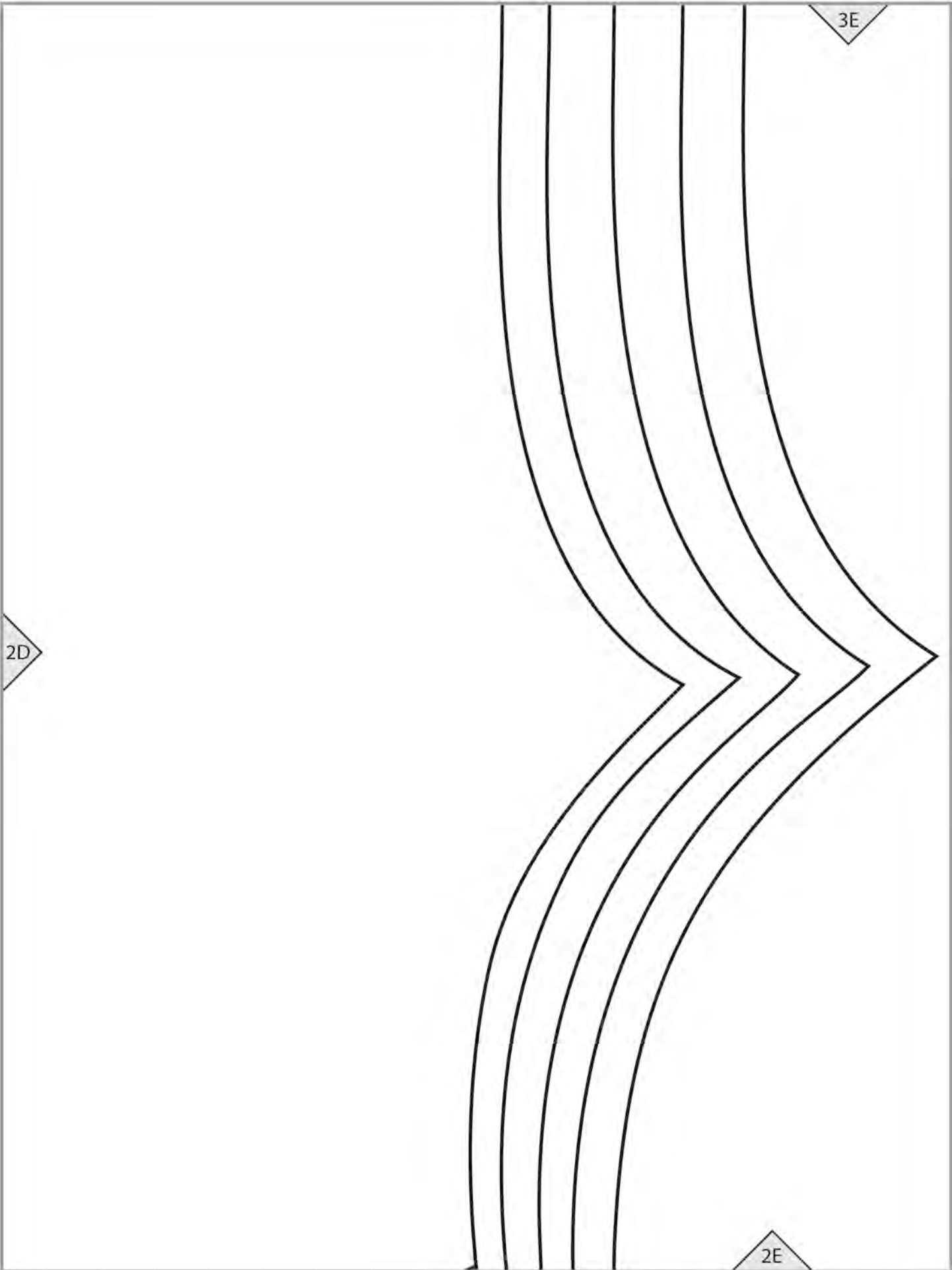
L

XL

XXL

2C





2D

3E

2E

2A

PLEAT

1A



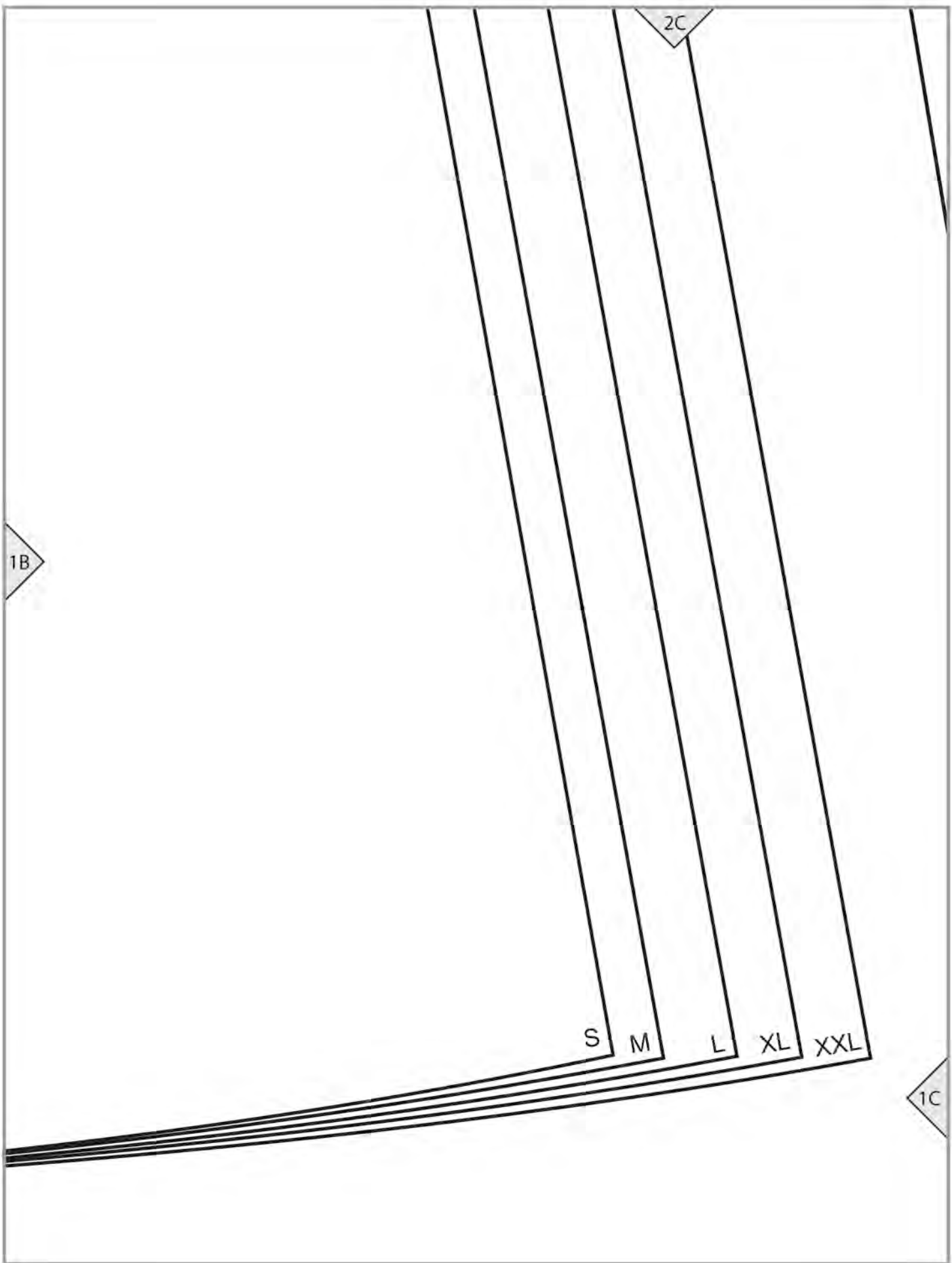
2B

1A

1B

E4 cutting line





2D

COAT (E) FRONT Cut 2

○
SNAP

S
M
L
XL
XXL

1D

1C

