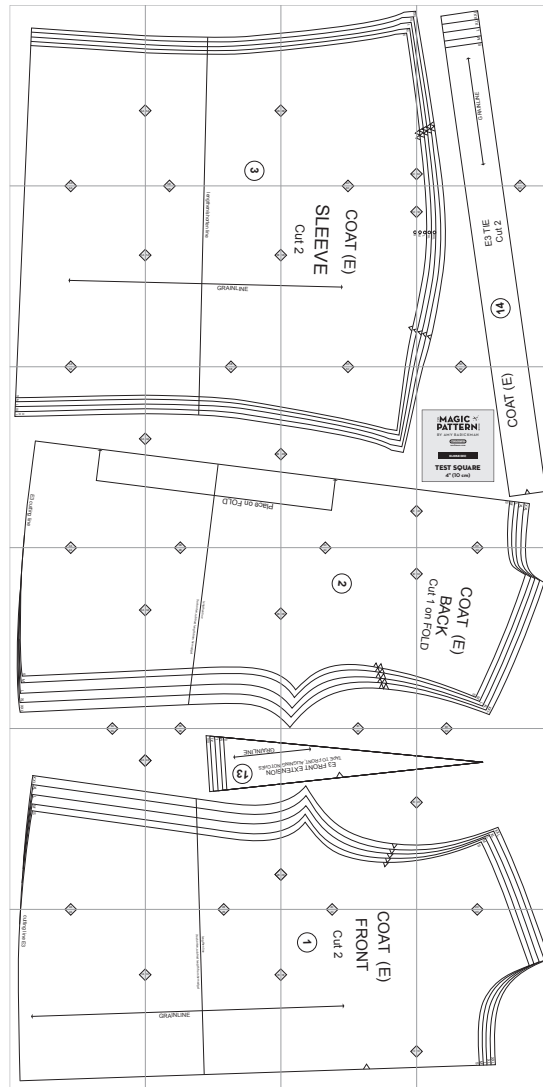


E3. Eloise

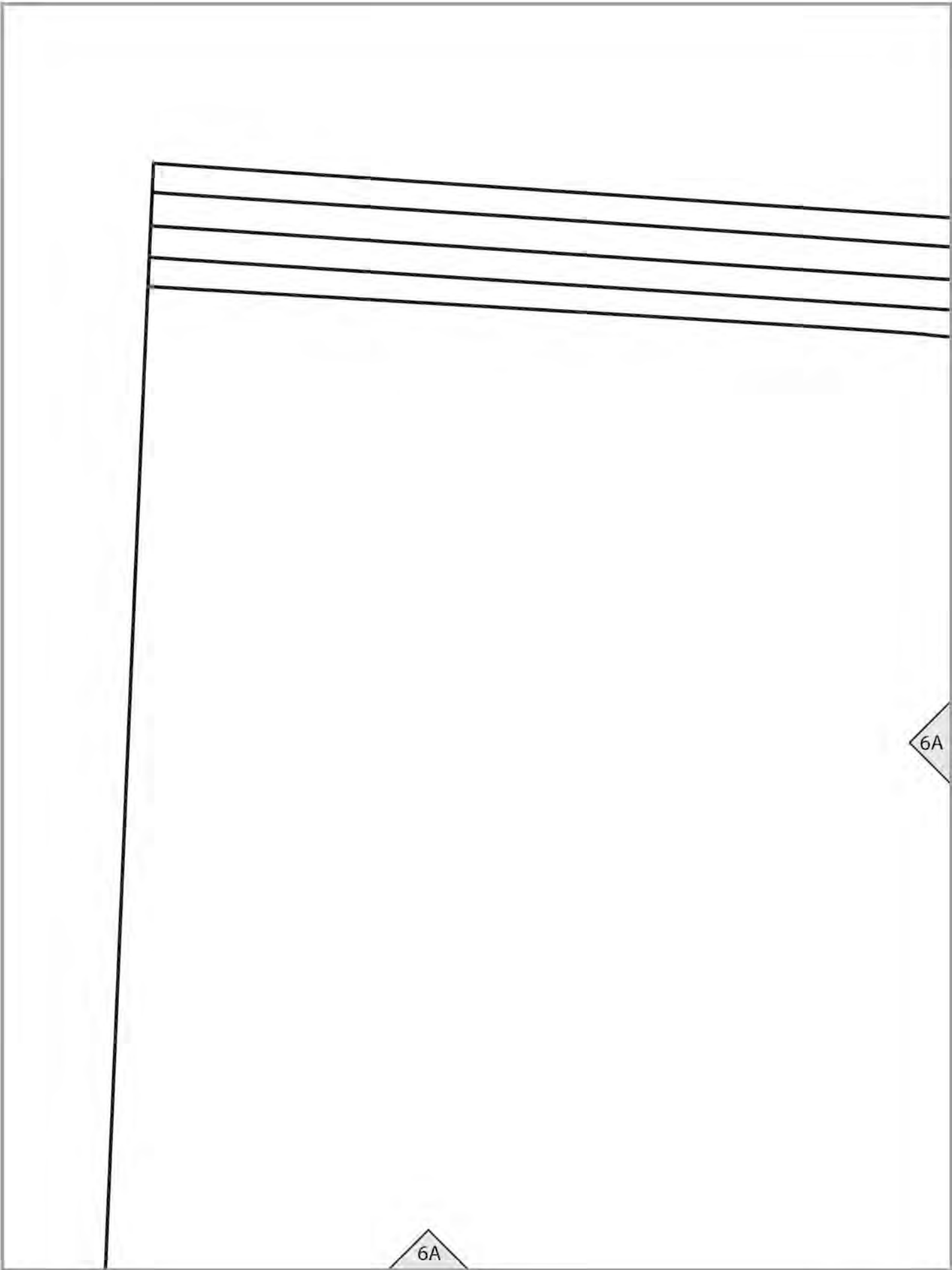


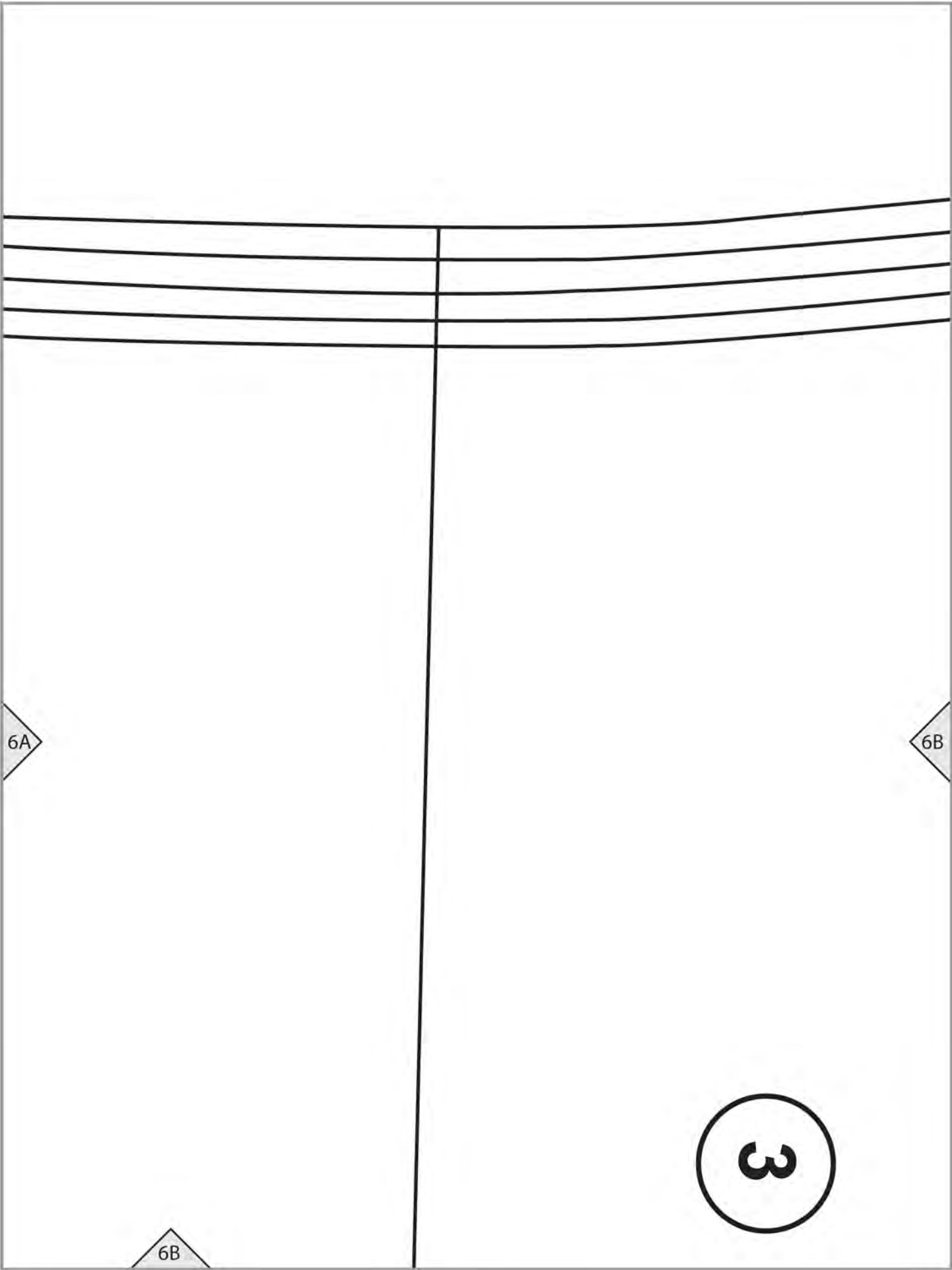
Copyright ©2014 by Amy Barickman

All rights reserved. Amy Barickman's patterns may be printed for personal use, but may not be otherwise reproduced—mechanically, electronically, or by any other means, including photocopying—without written permission of the publisher.

Sewing pattern designs for *The Magic Pattern Book* by Amy Barickman are intended for personal use only, and not as the basis for commercial manufacturing.

Workman Publishing, New York • workman.com



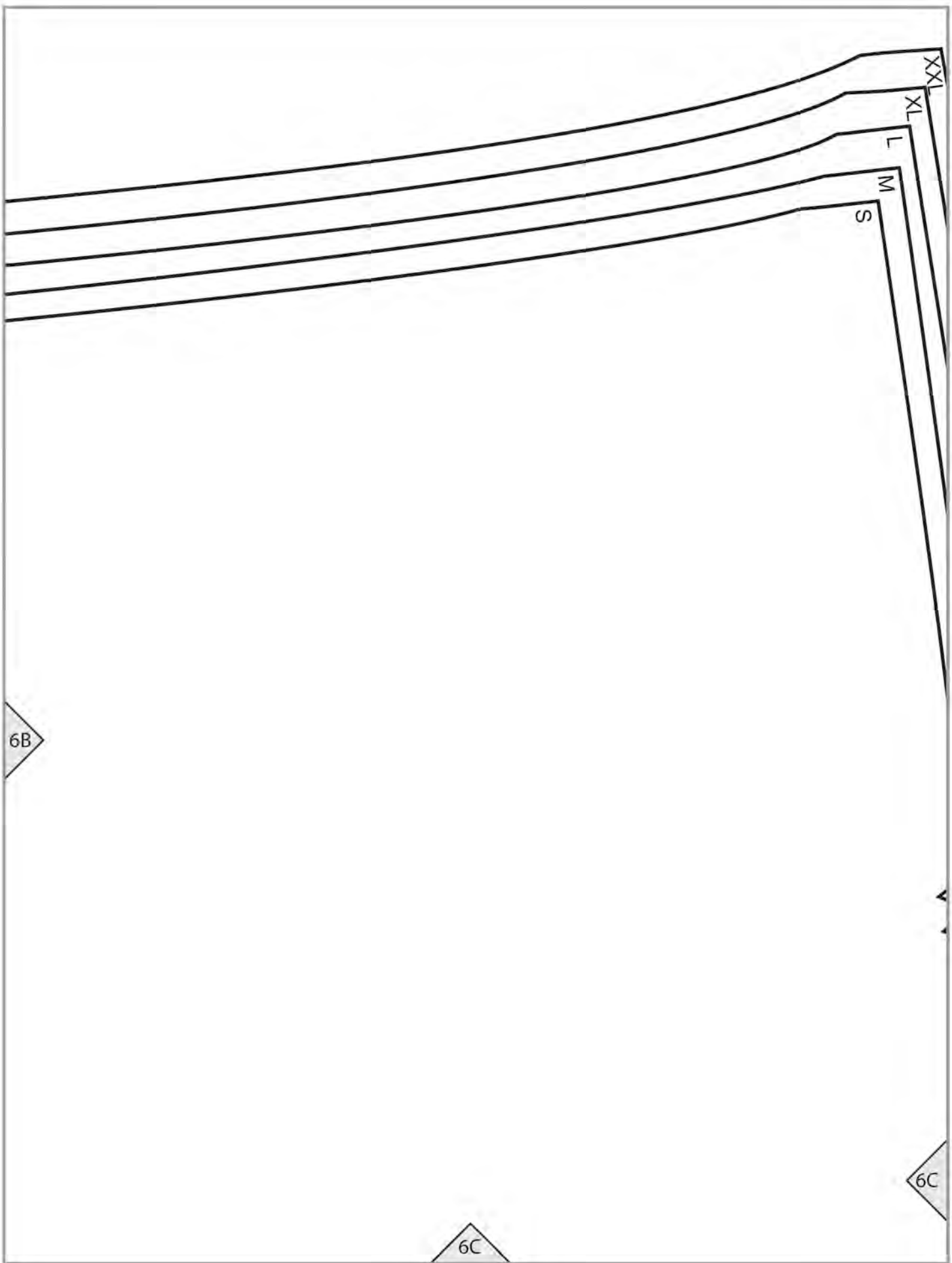


6A

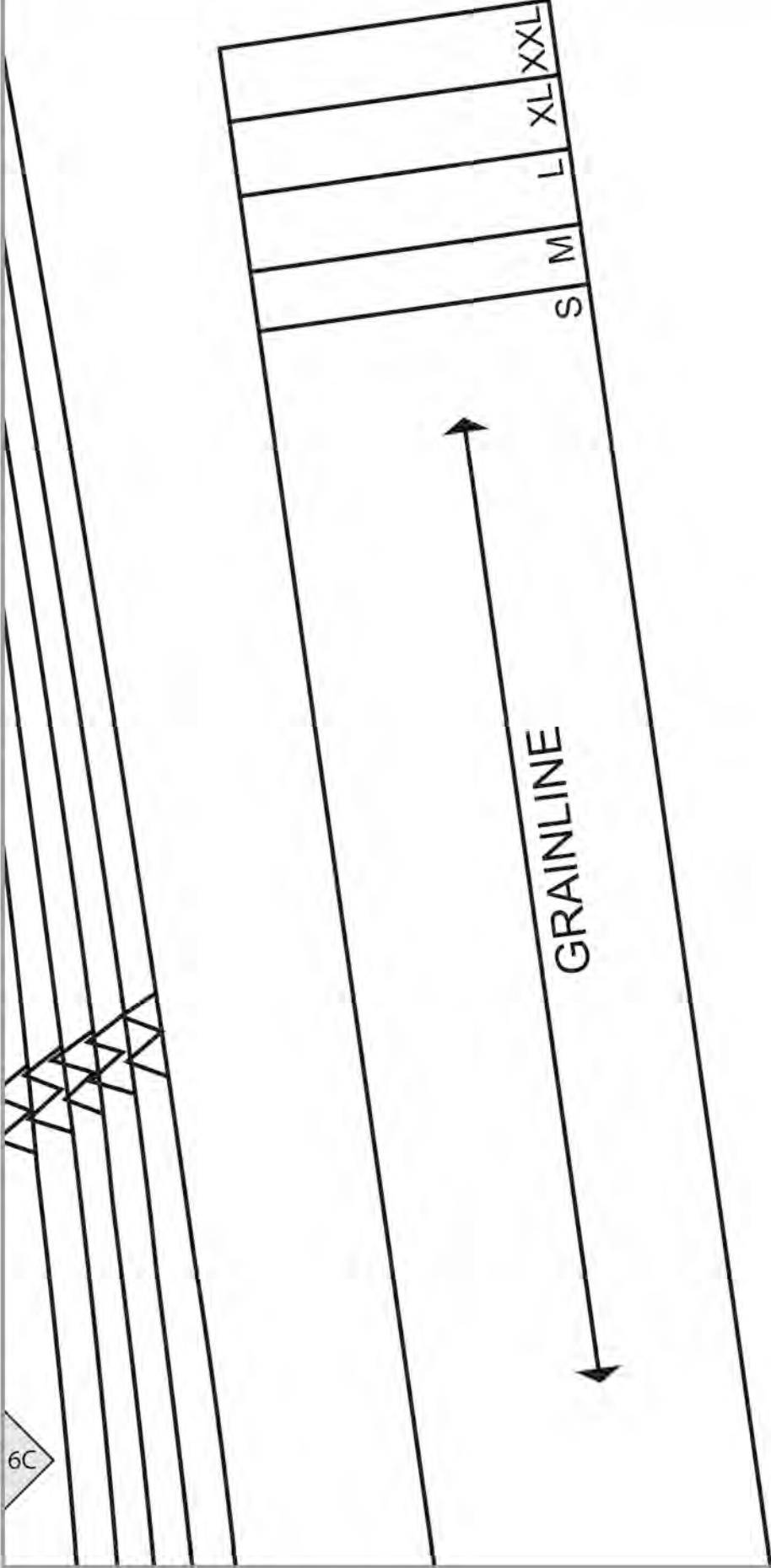
6B

6B

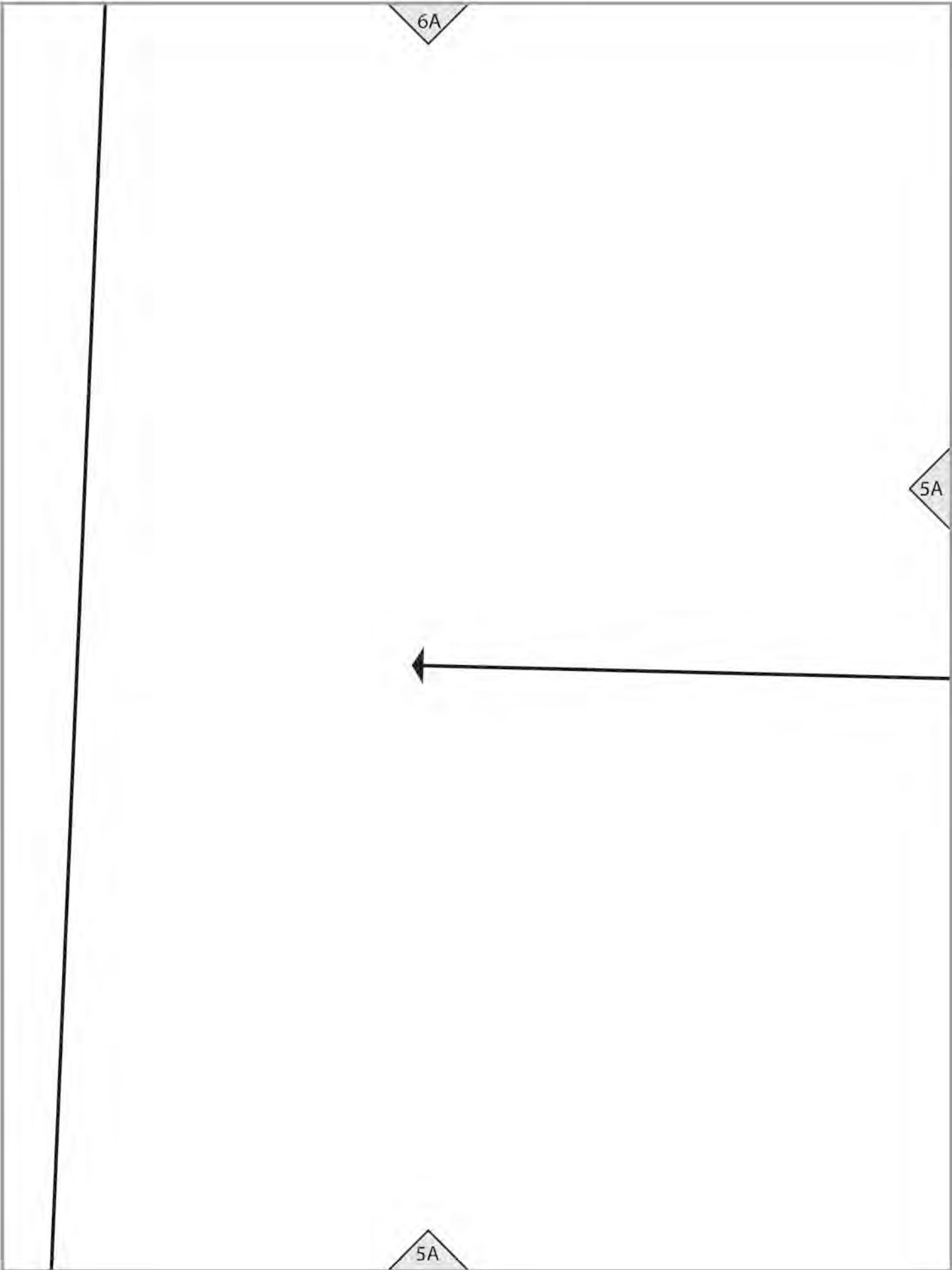
3

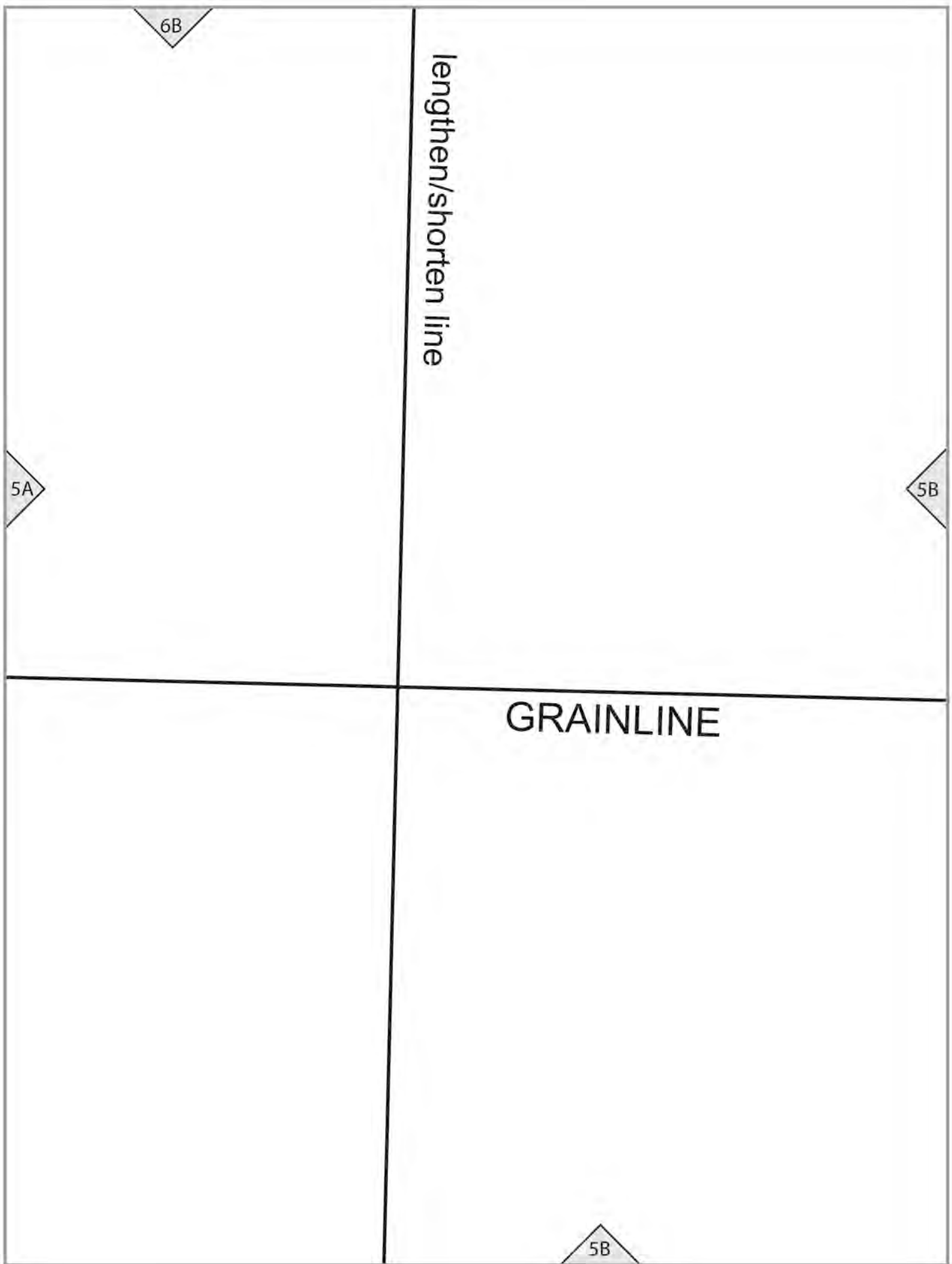


6C



6D





5C

OS

6C

COAT (E)

SLEEVE

Cut 2

5B

5C



5C

WO
TO
TXO
TXXO

5D

6D

E3 TIE
Cut 2

14

5A

S

M

L

XL

L

XX

4A

E3 cutting line

4A

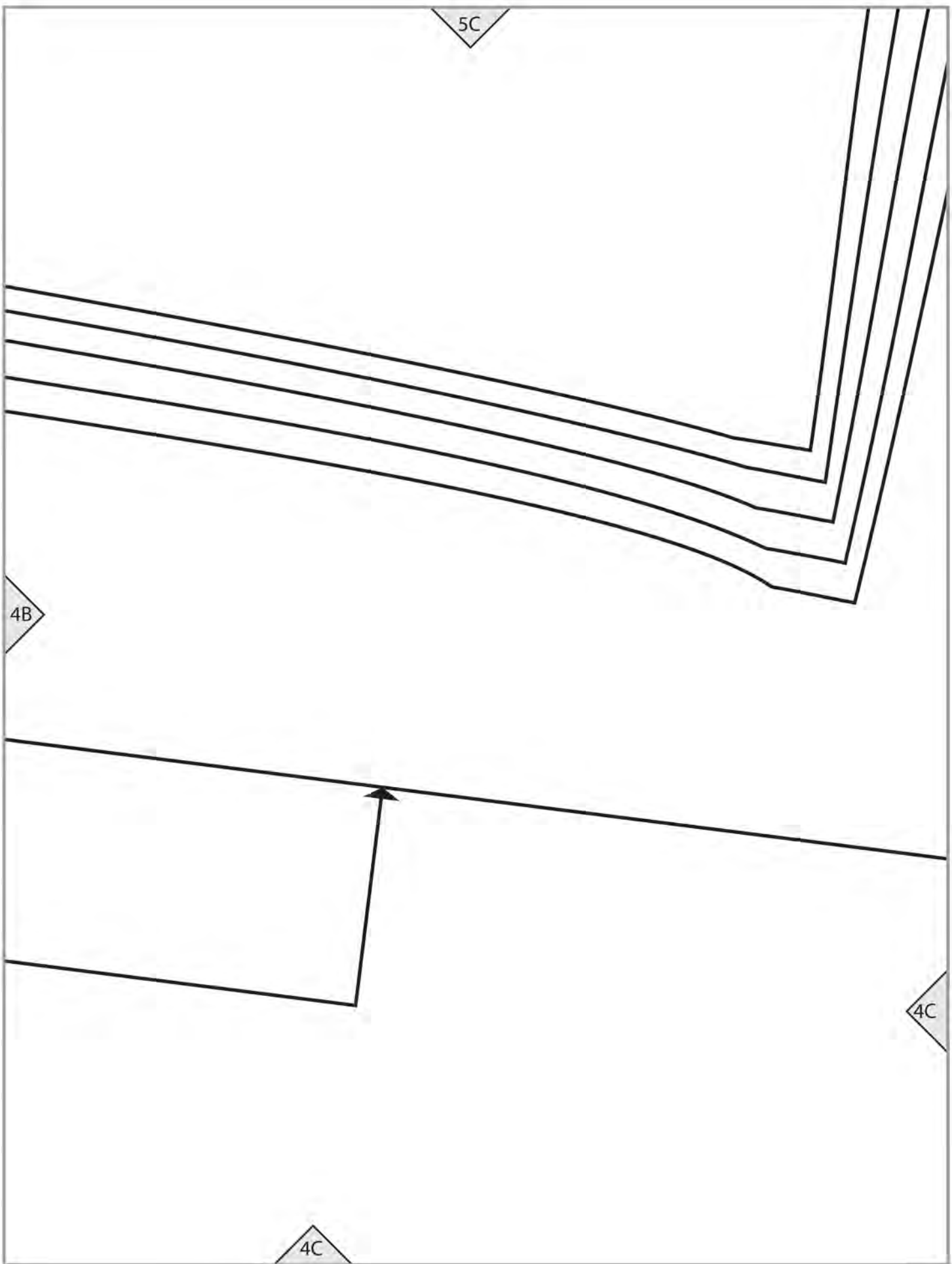
5B

4A

4B

Place on FOLD

4B



5D

COAT (E)

THE **MAGIC**  **PATTERN** BOOK

BY AMY BARICKMAN

workman

workman.com

ELOISE (E3)

TEST SQUARE

4" (10 cm)

4C

S
M
L
XL
XXX

4D

4A

3A

S

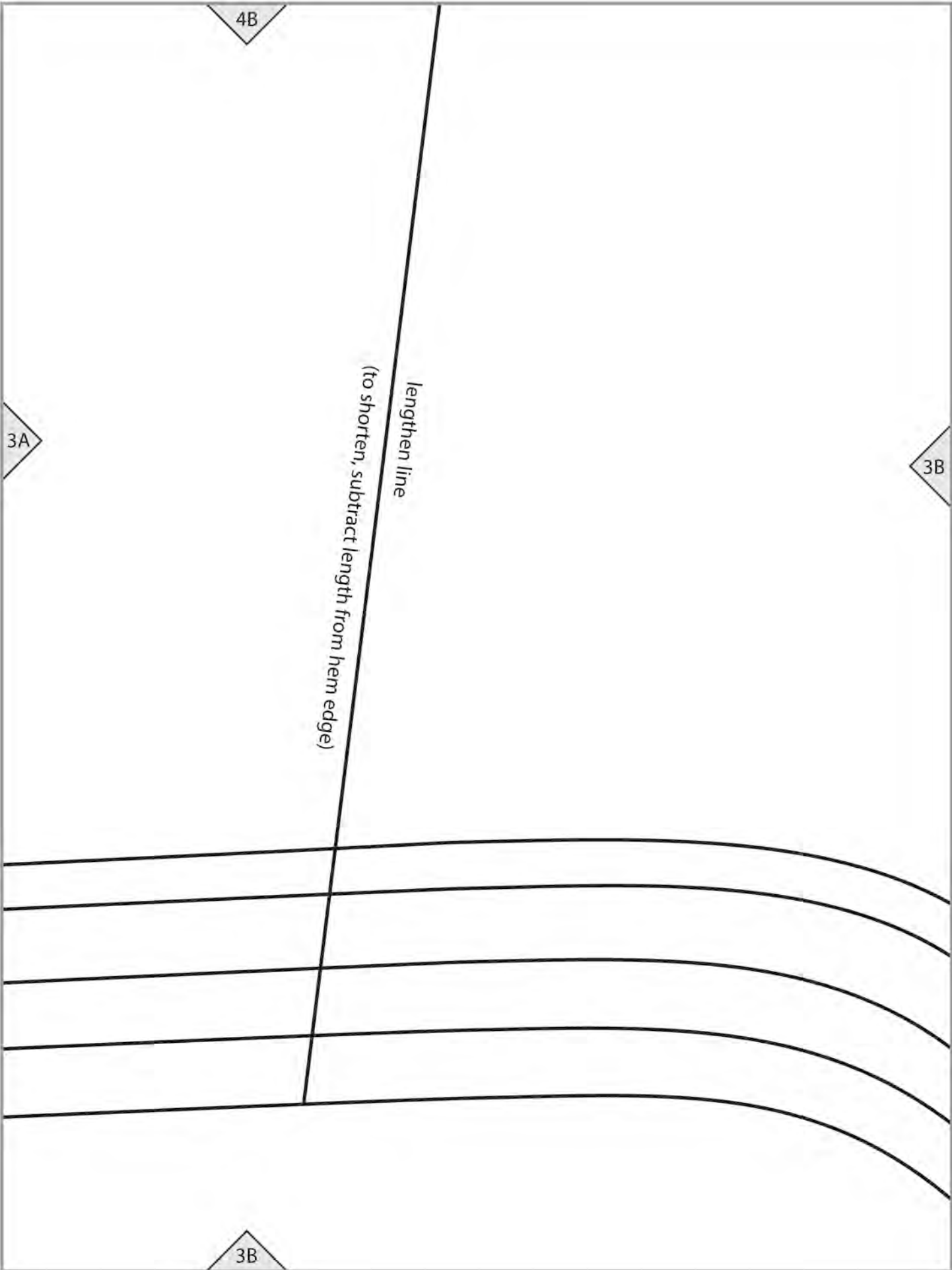
M

L

TX

TXX

3A

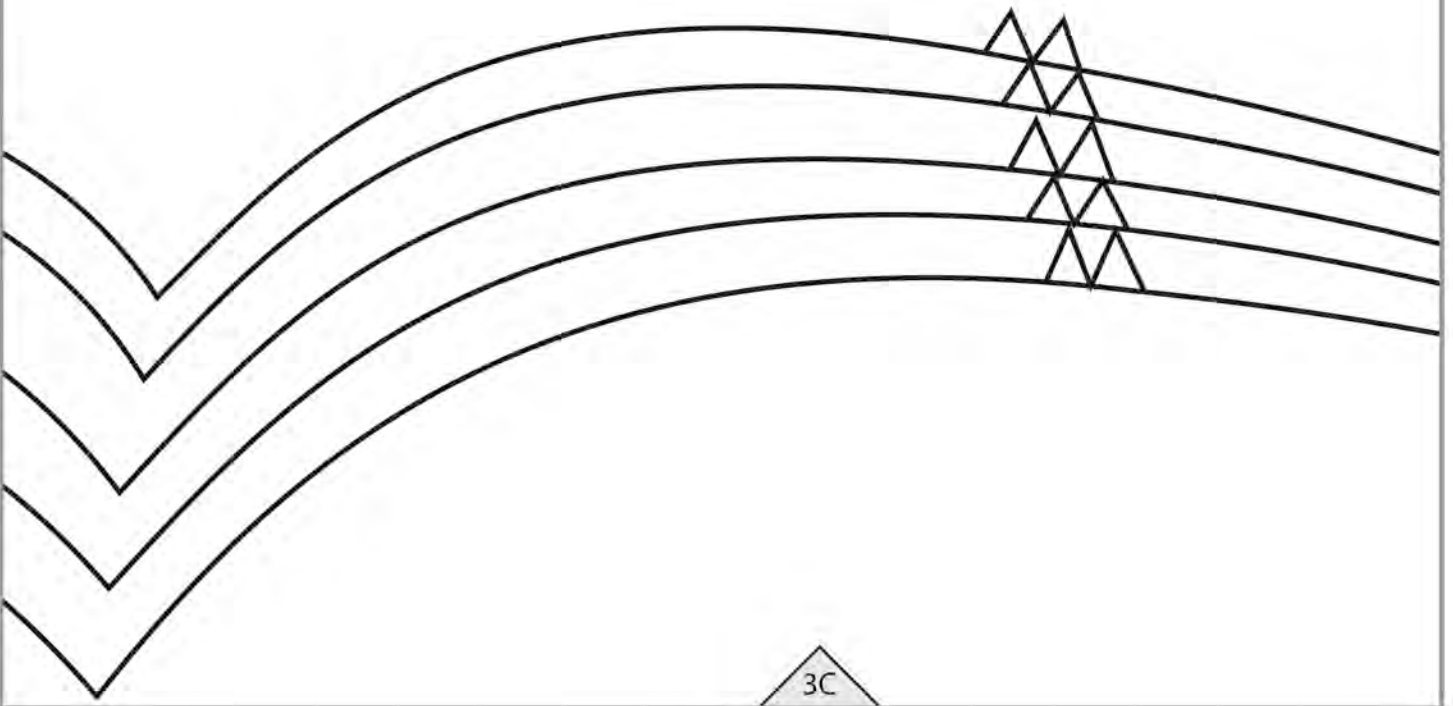


4C

3C



3B



3C

4D

3C

COAT (E) BACK

Cut 1 on FOLD

S

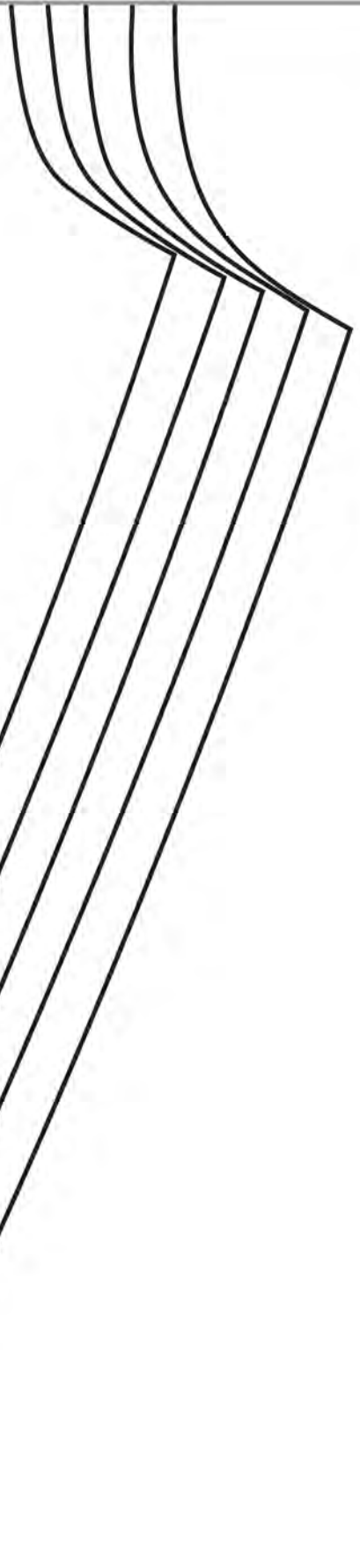
M

L

XL

XXL

3D



3A

2A

XXL

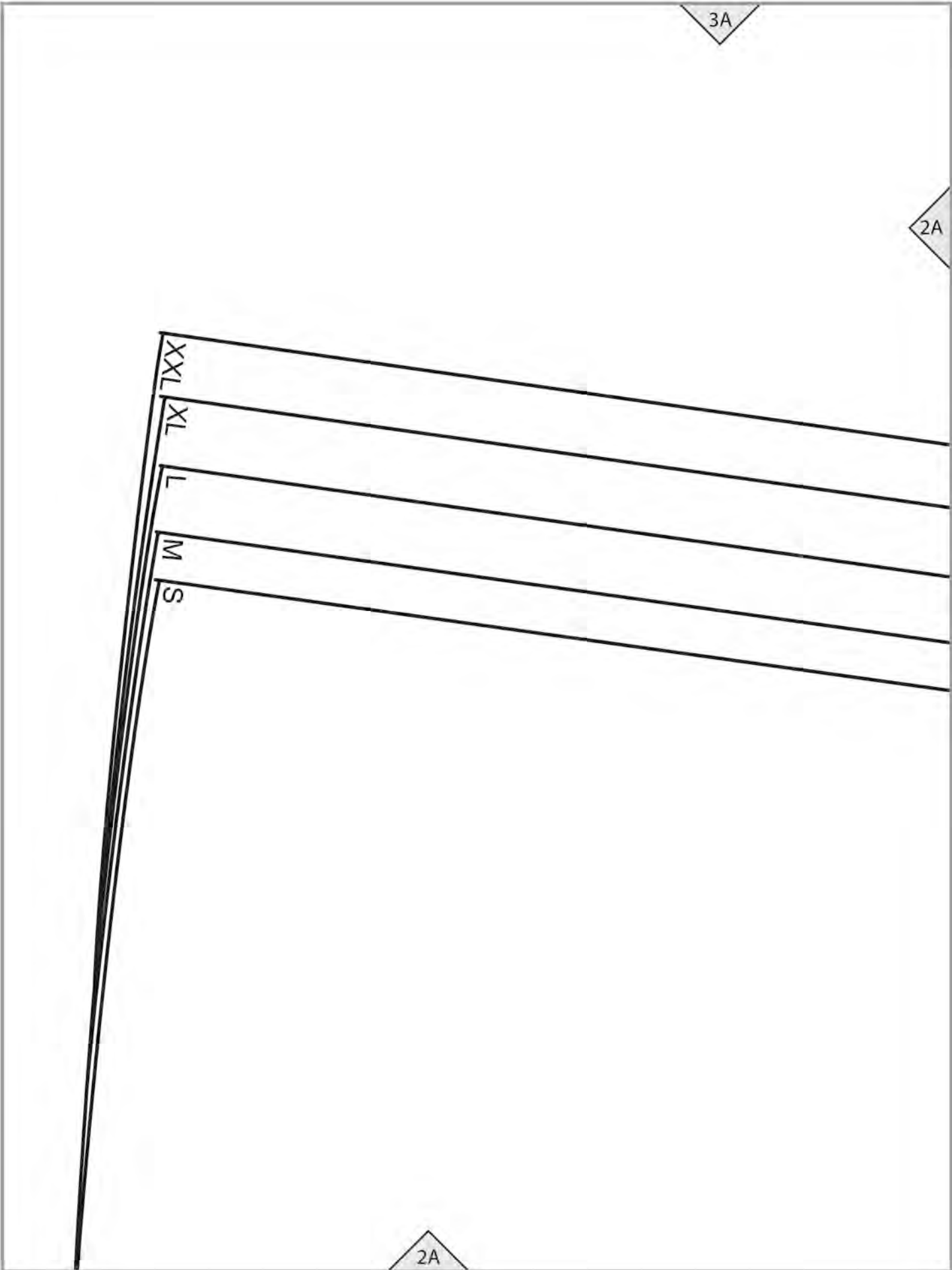
XL

L

M

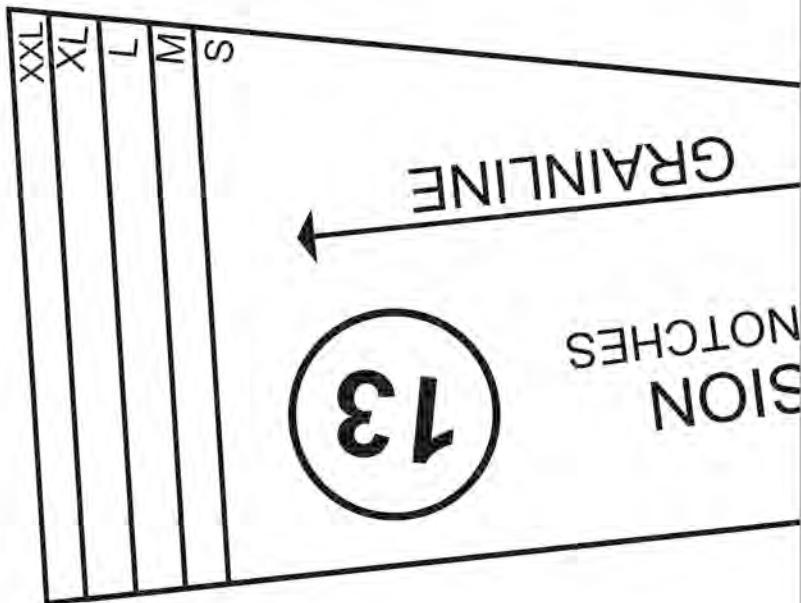
S

2A



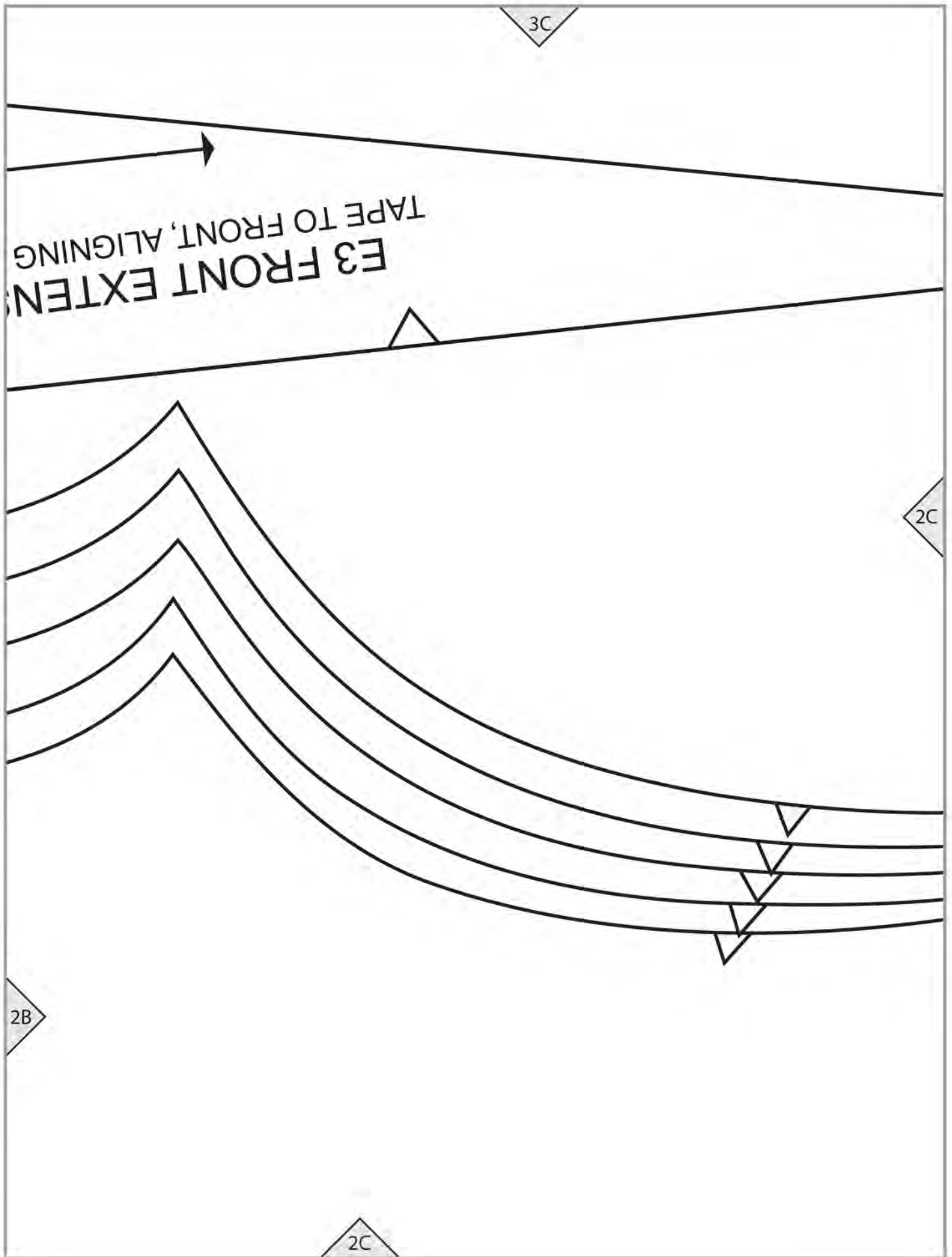
3B

2A

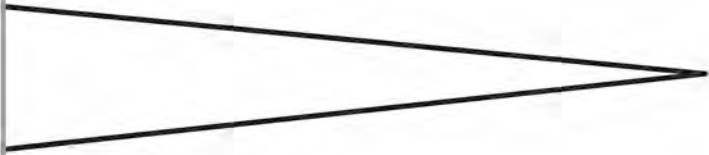


2B

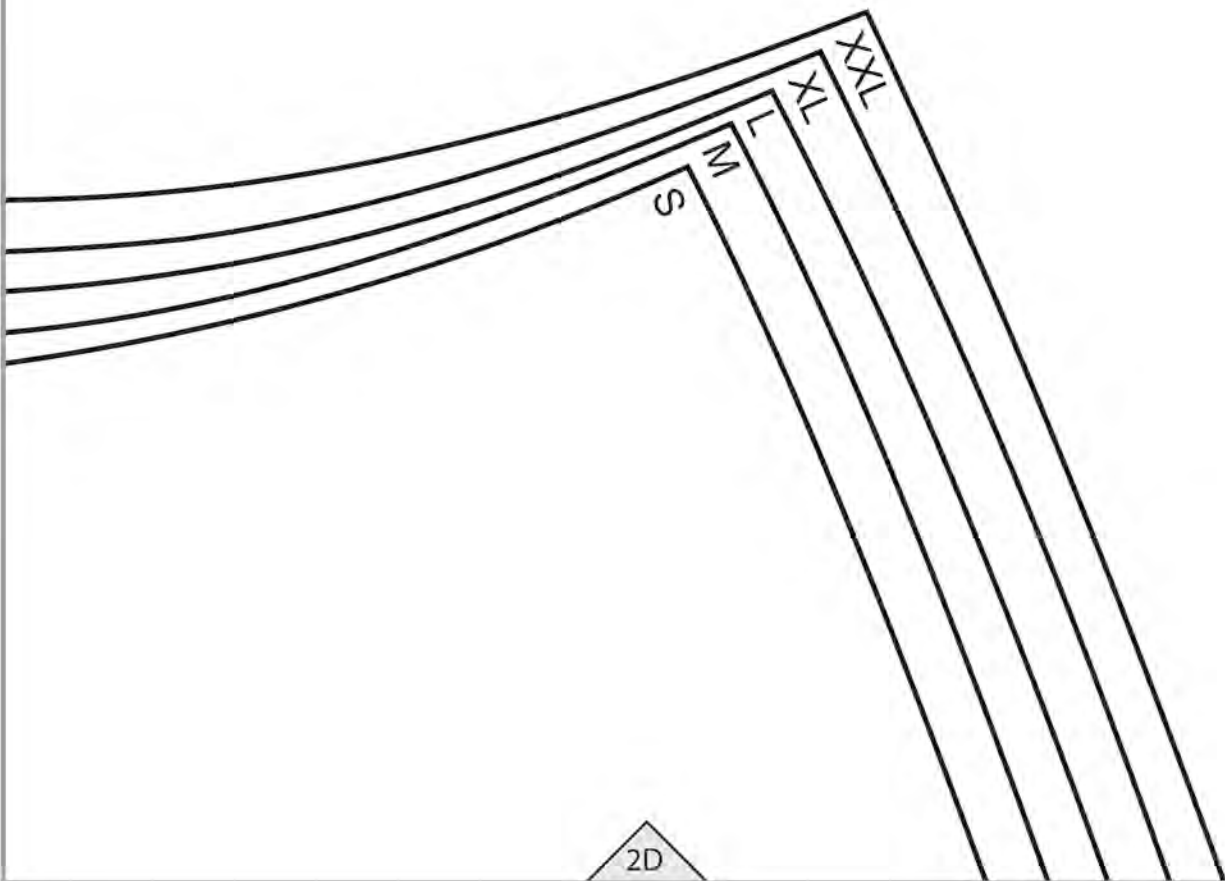
2B



3D



2C



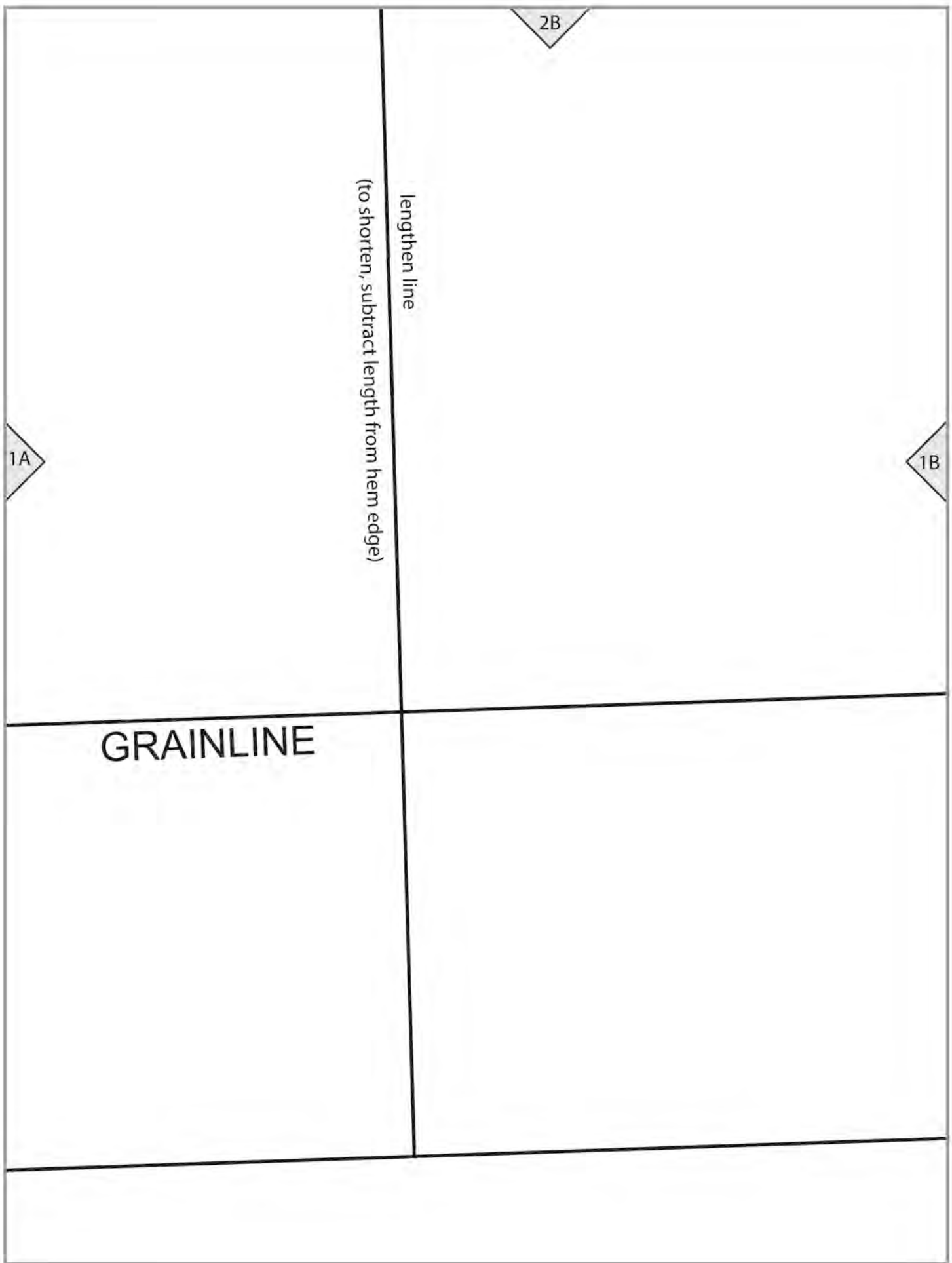
2D

2A

1A

cutting line E3





COAT (E)

FRONT

Cut 2

1

2C

1B

1C



2D

1C

S
M
T
TX
TXX

