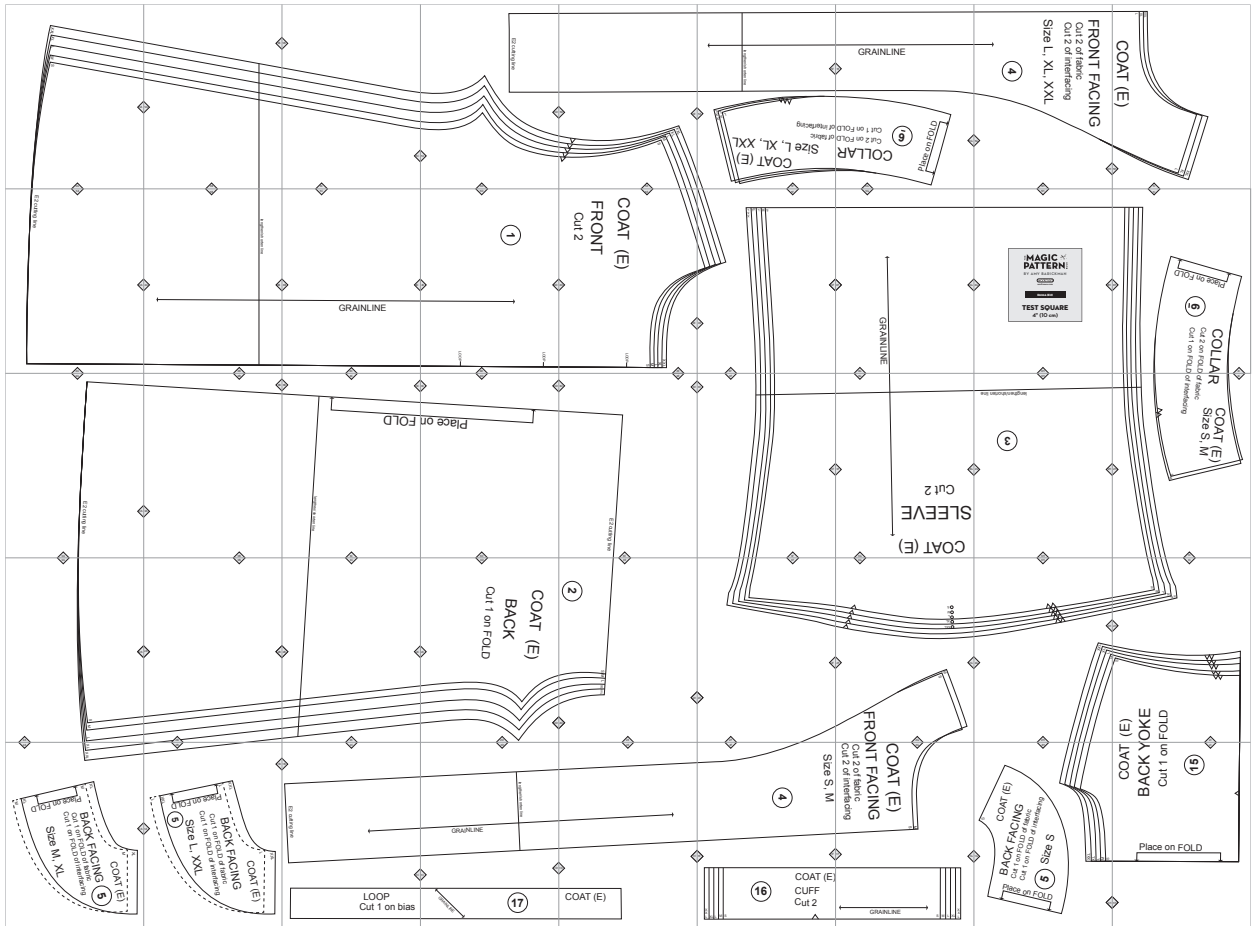


# E2. Emma

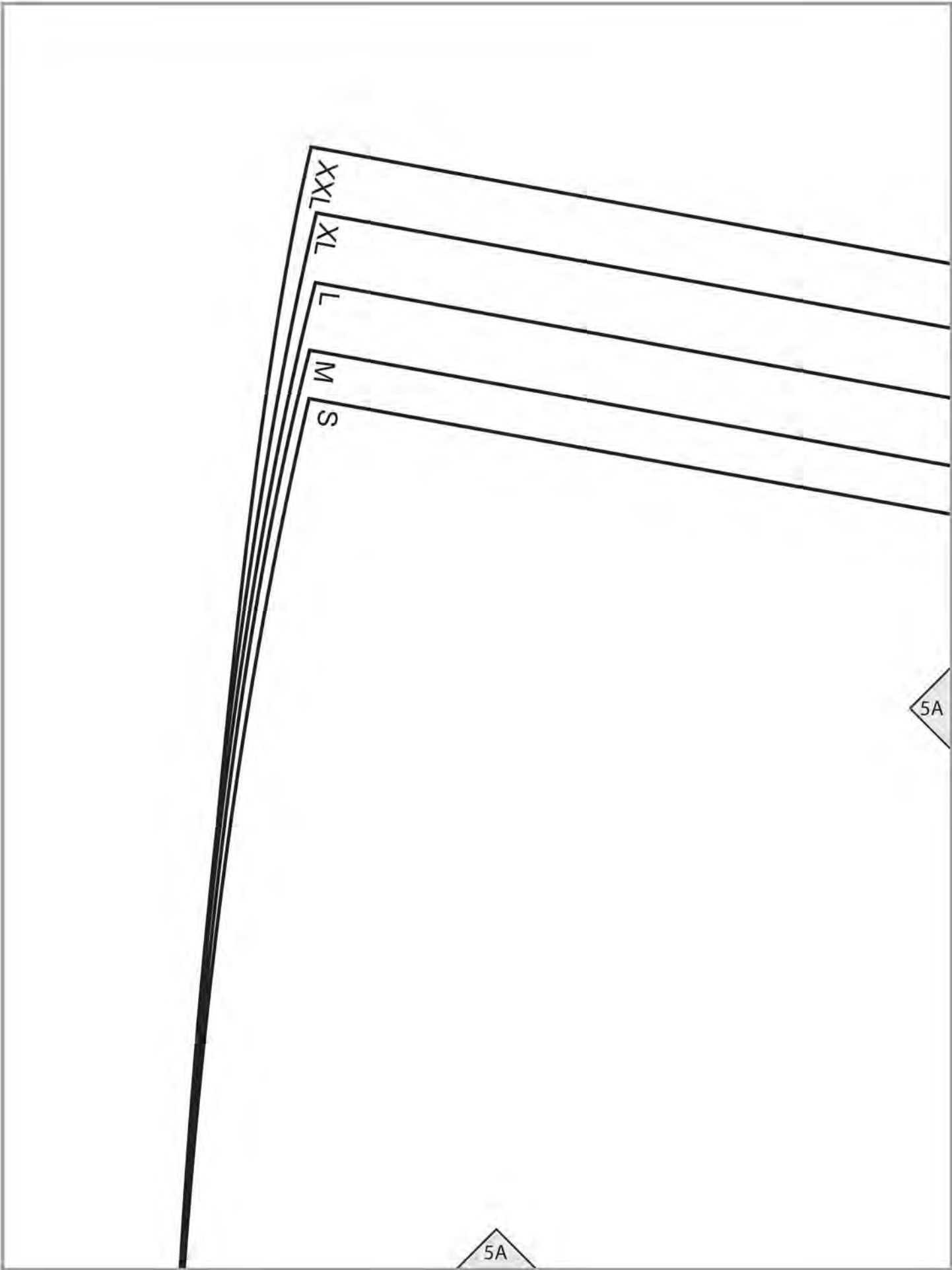


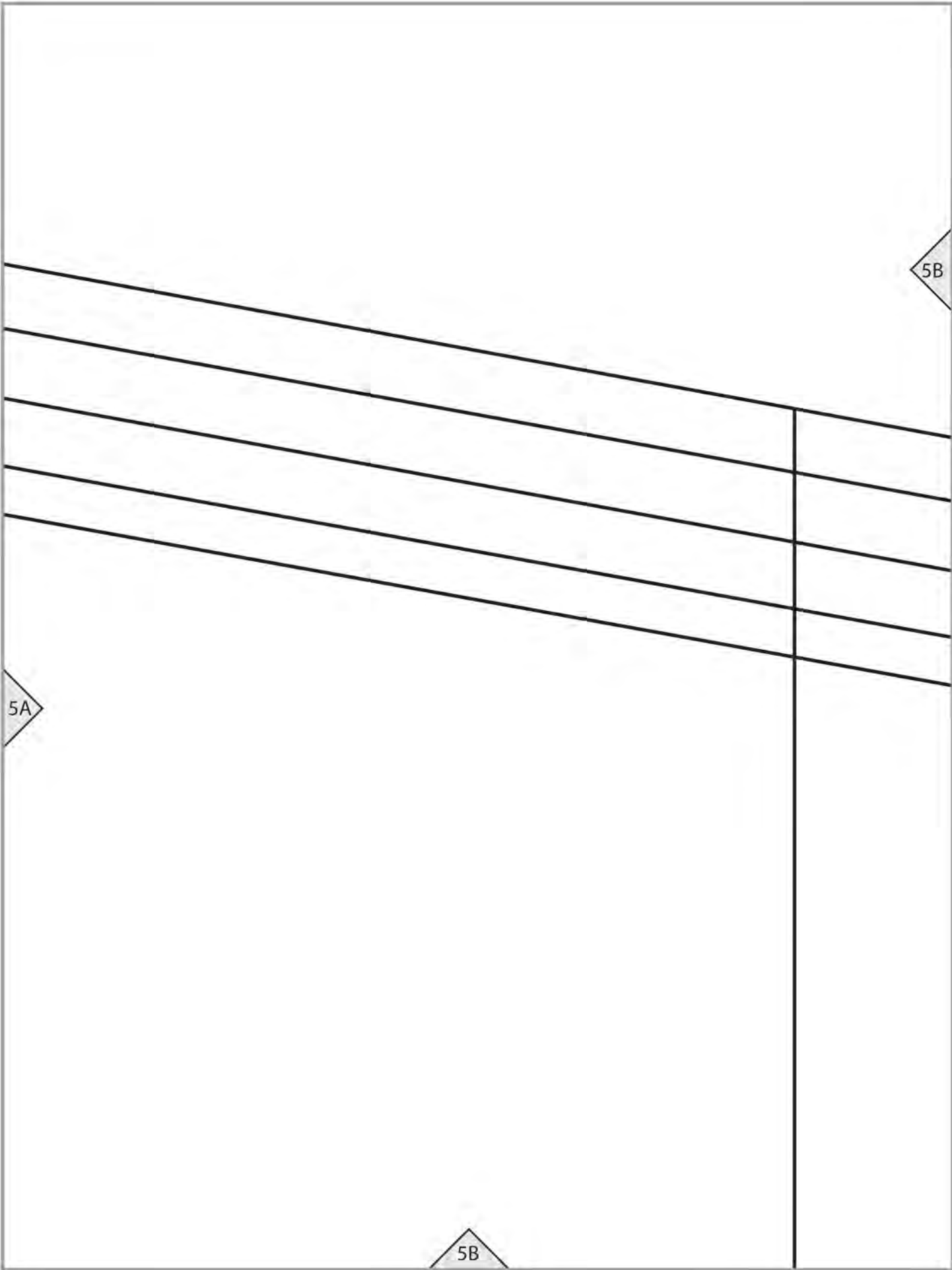
Copyright ©2014 by Amy Barickman

All rights reserved. Amy Barickman's patterns may be printed for personal use, but may not be otherwise reproduced—mechanically, electronically, or by any other means, including photocopying—without written permission of the publisher.

Sewing pattern designs for *The Magic Pattern Book* by Amy Barickman are intended for personal use only, and not as the basis for commercial manufacturing.

Workman Publishing, New York • [workman.com](http://workman.com)



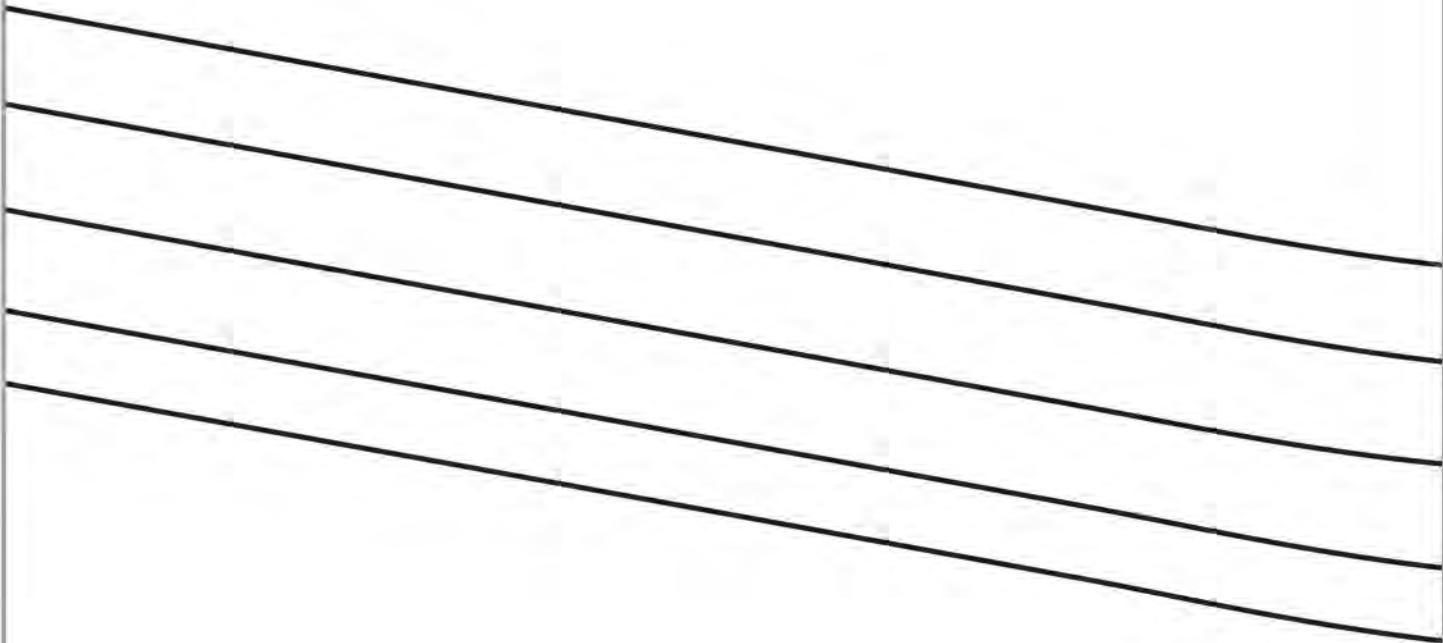


5A

5B

5B

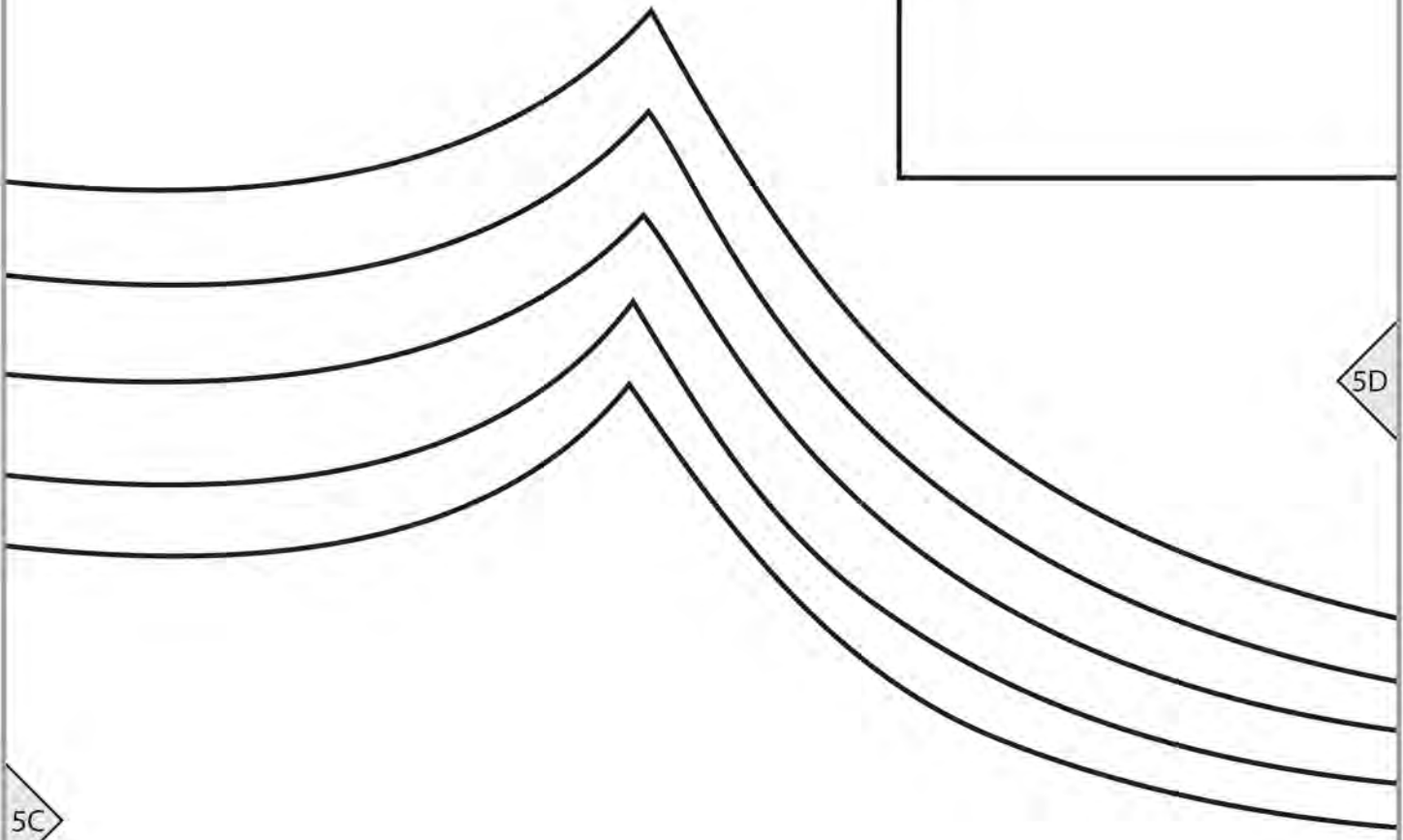
5B



5C

5C

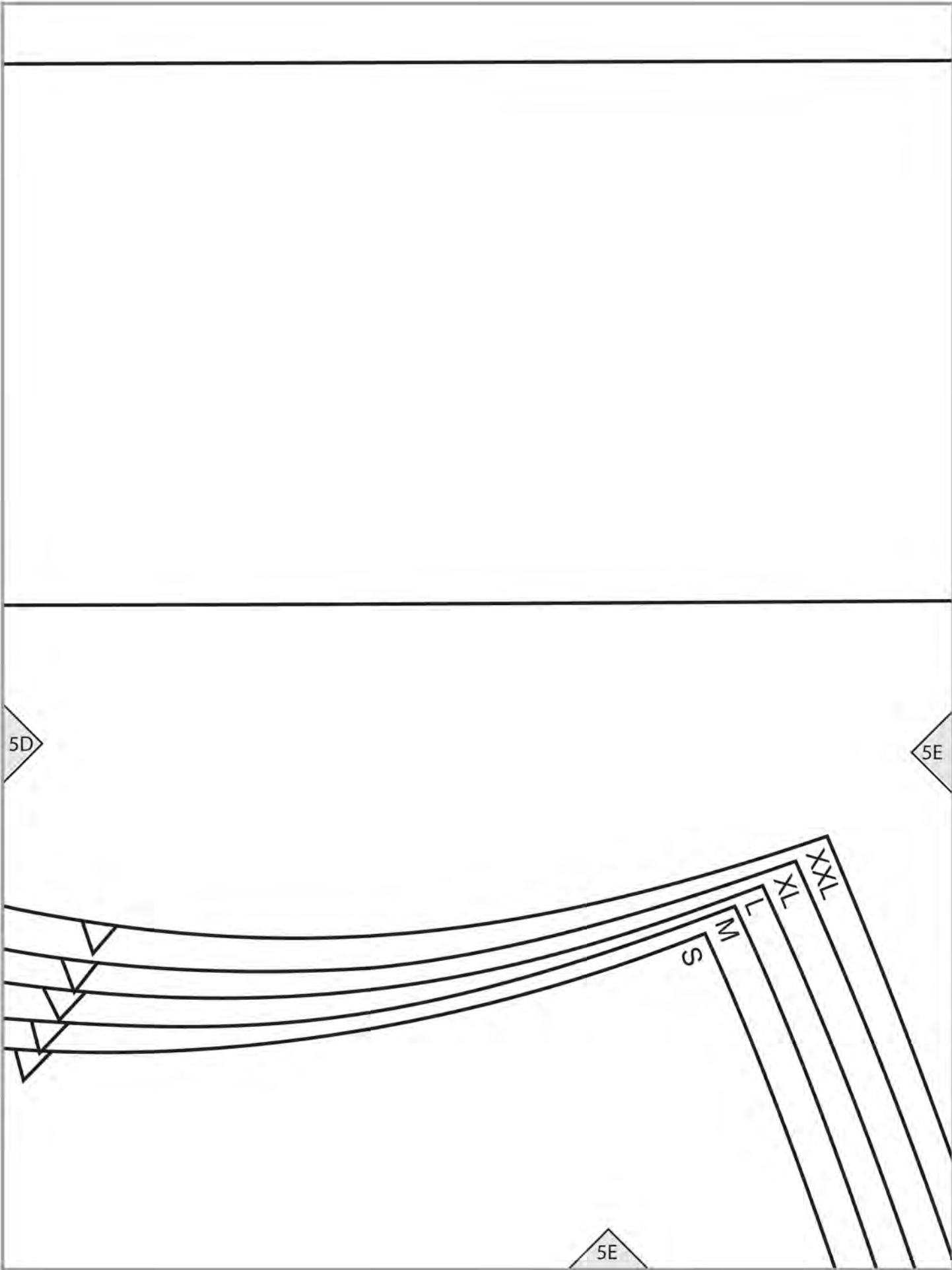
E2 cutting line

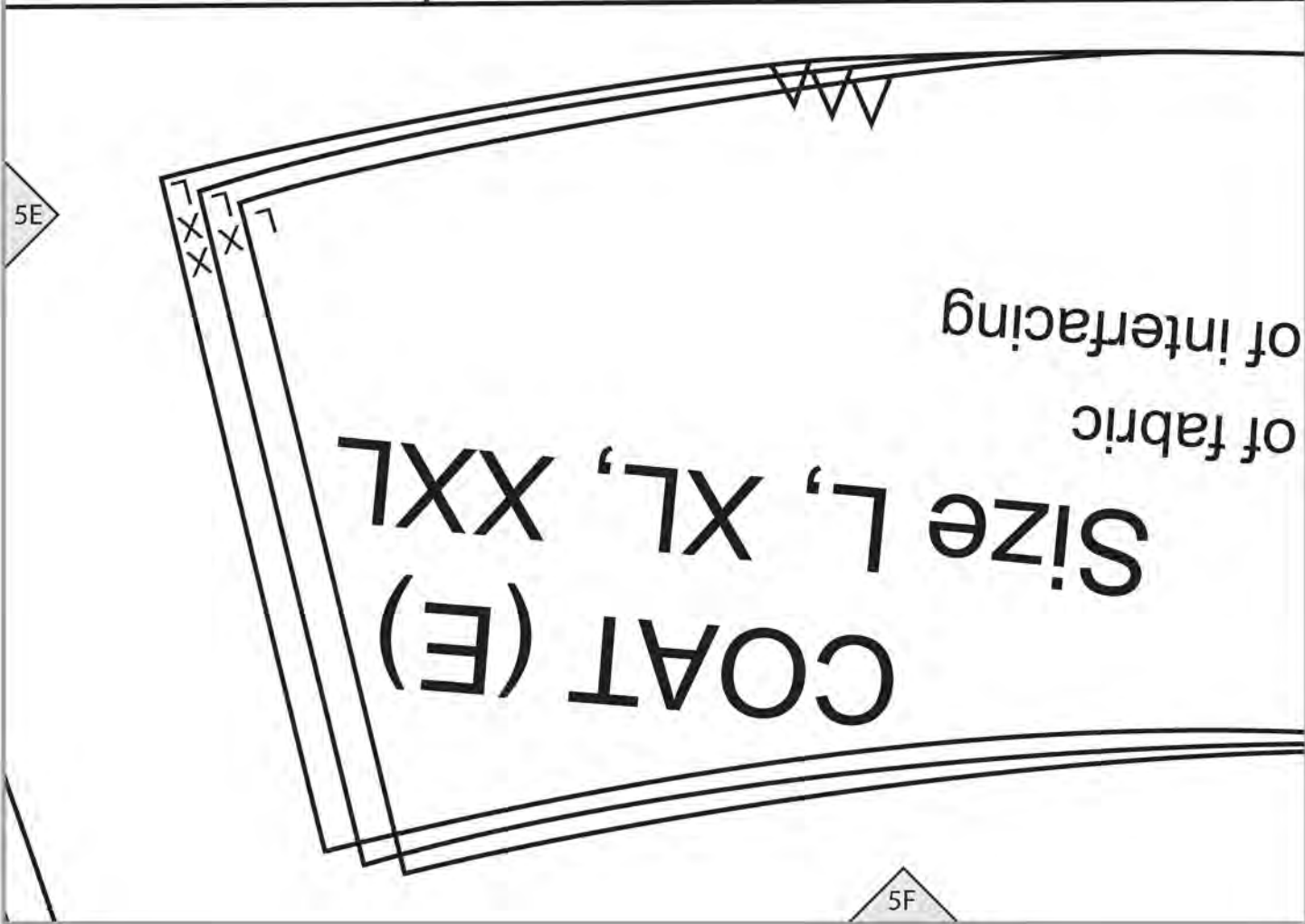
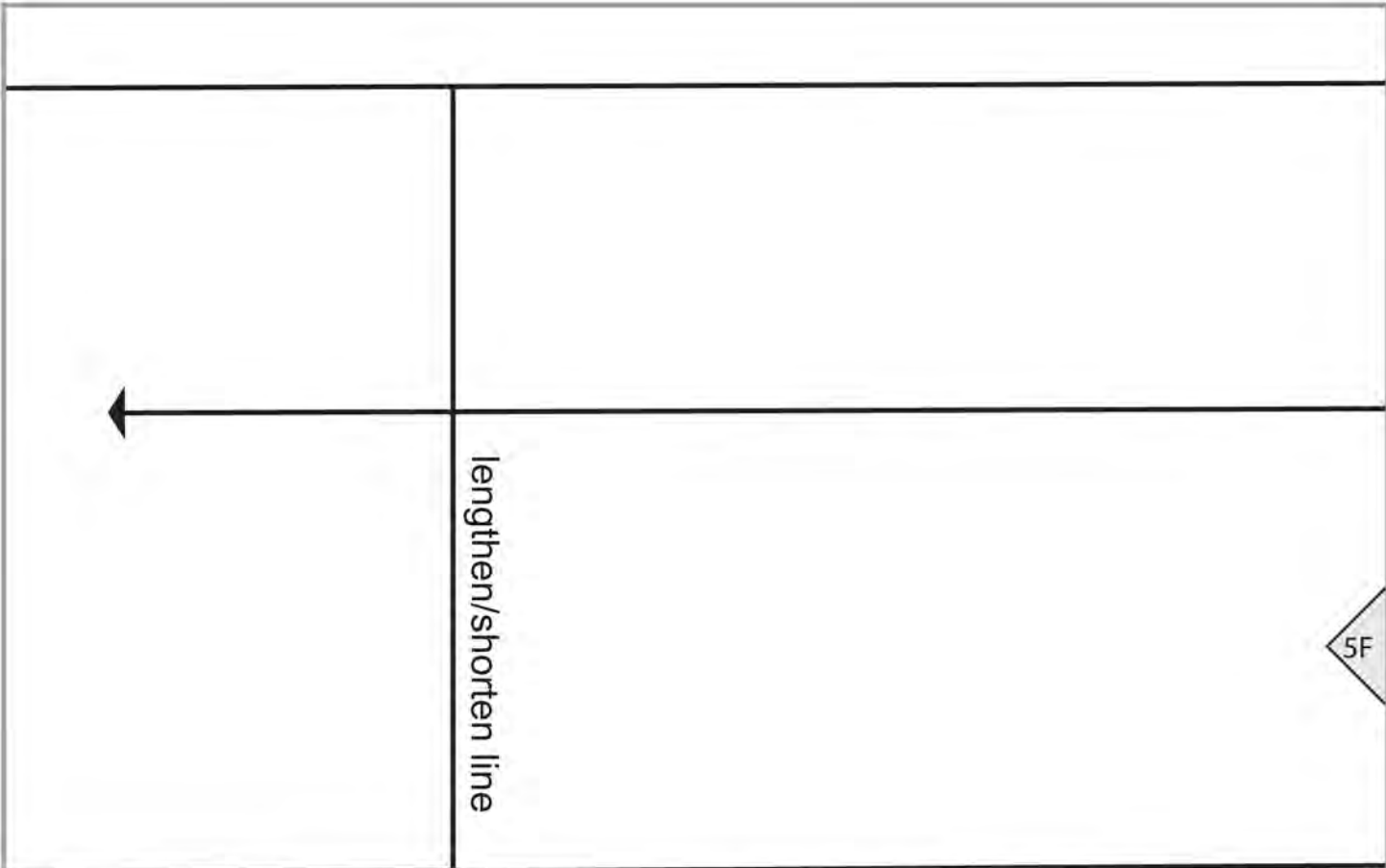


5D

5C

5D





GRAINLINE

5F

Cut 2 on FOLD  
Cut 1 on FOLD

9

COLLAR

Place on FOLD

5G

5G



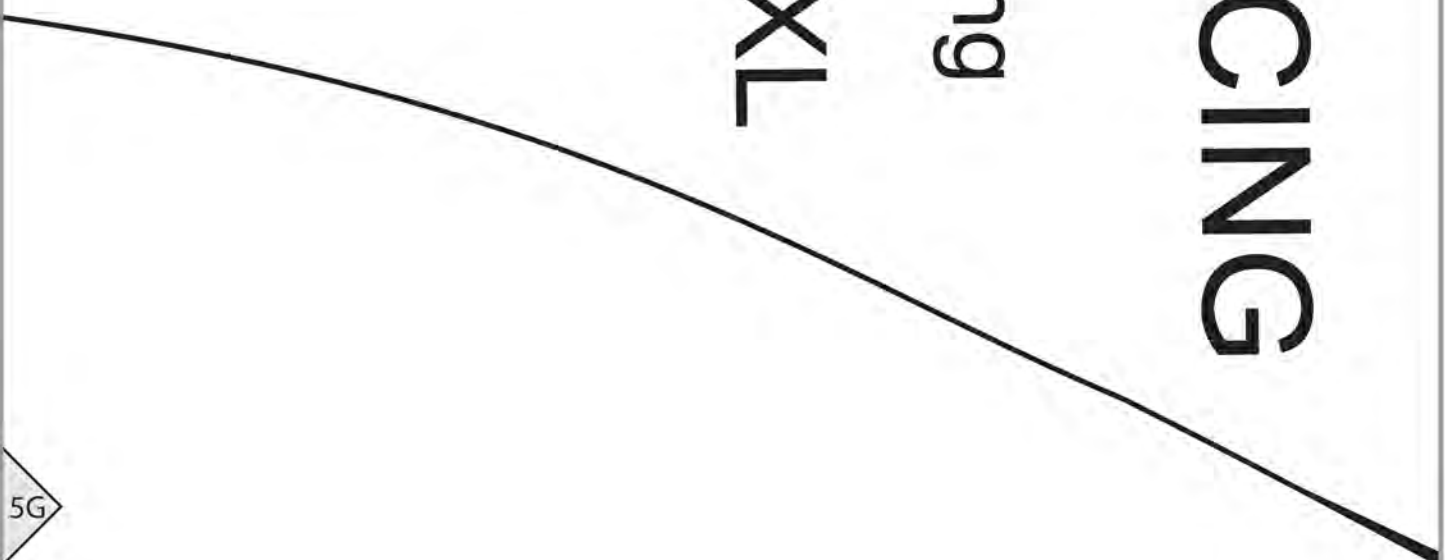
# FRONT FACING

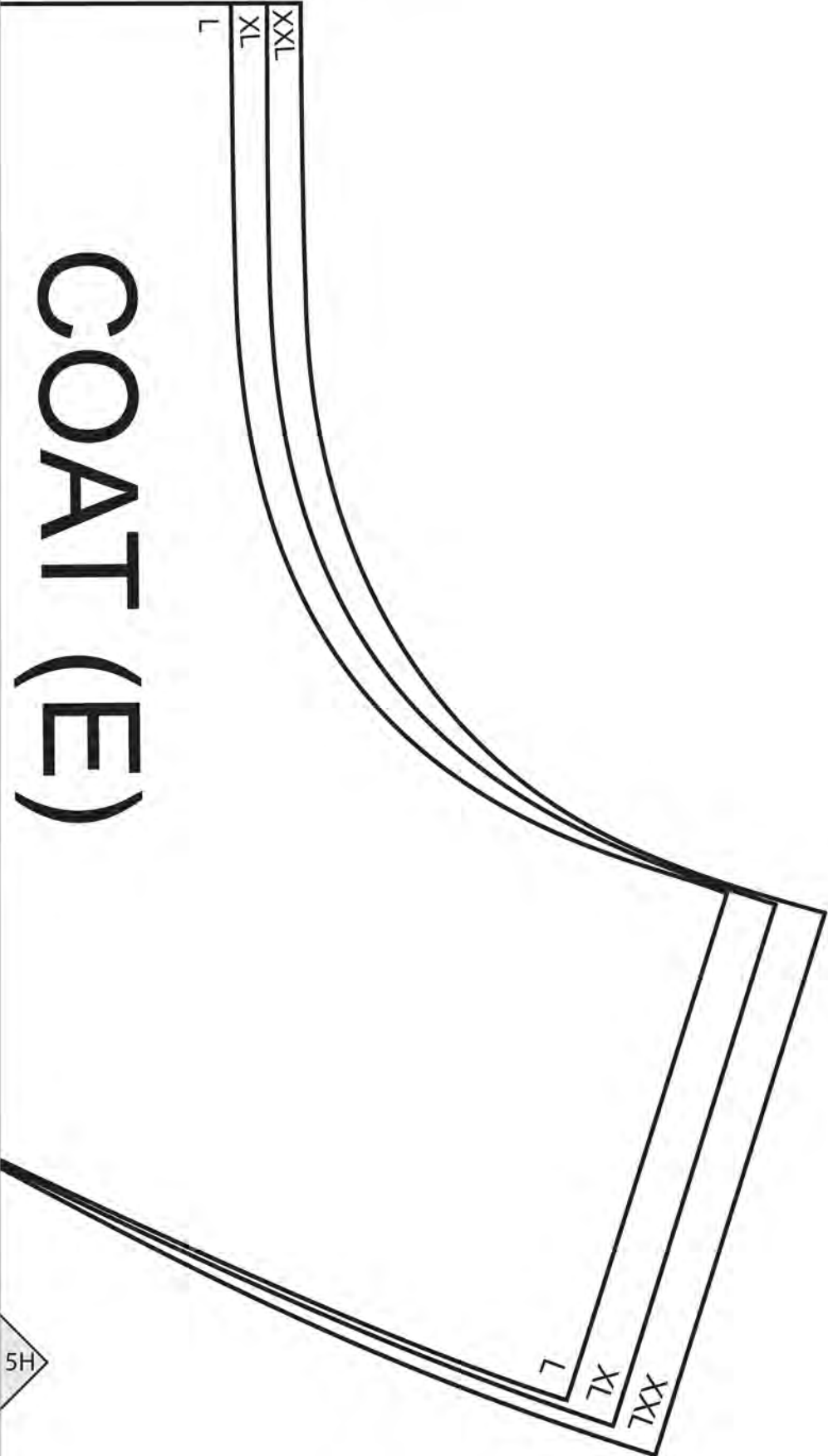
Cut 2 of fabric

Cut 2 of interfacing

Size L, XL, XXL

4





# COAT (E)

5H

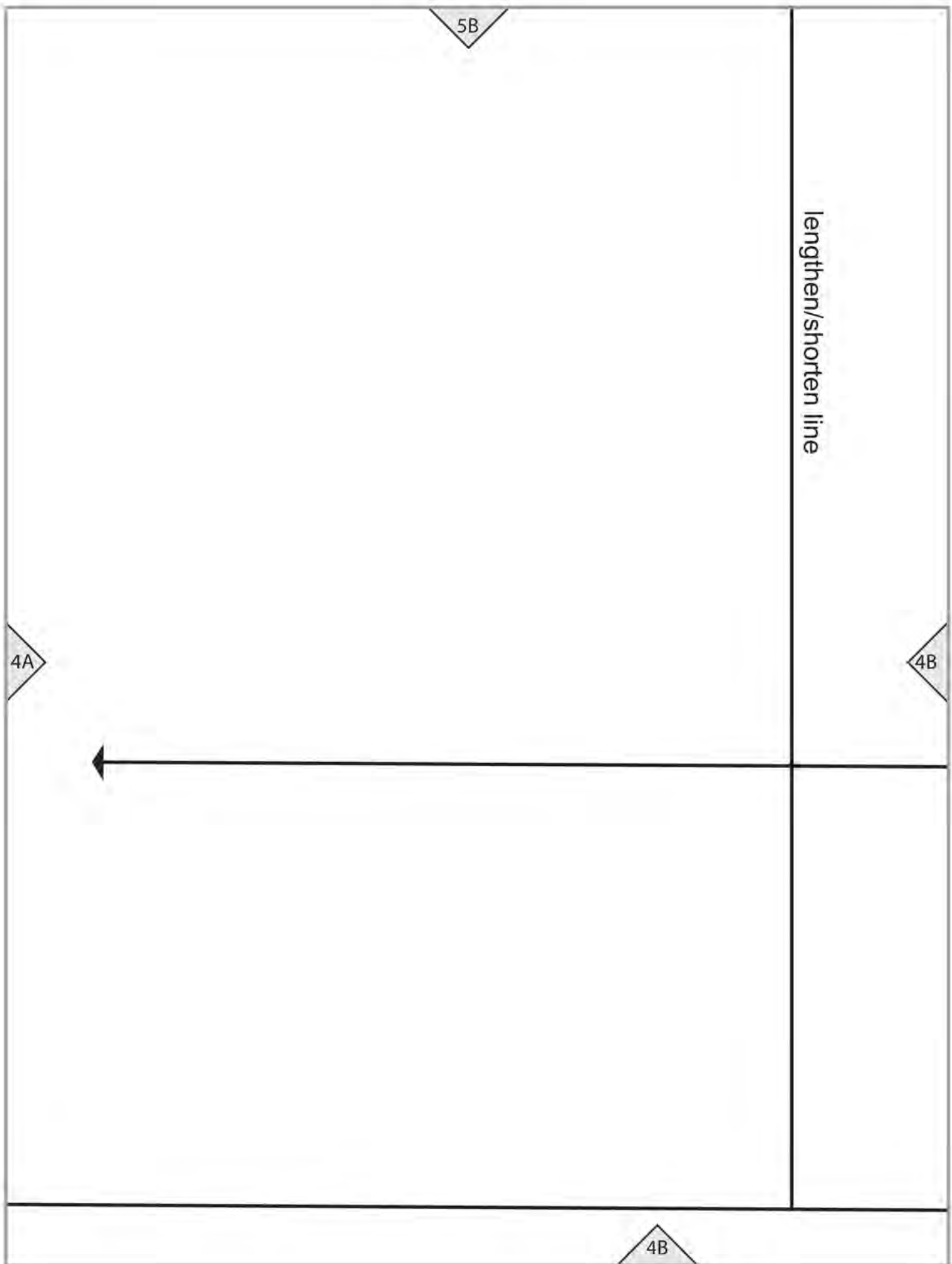
5I

5A

E2 cutting line

4A

4A



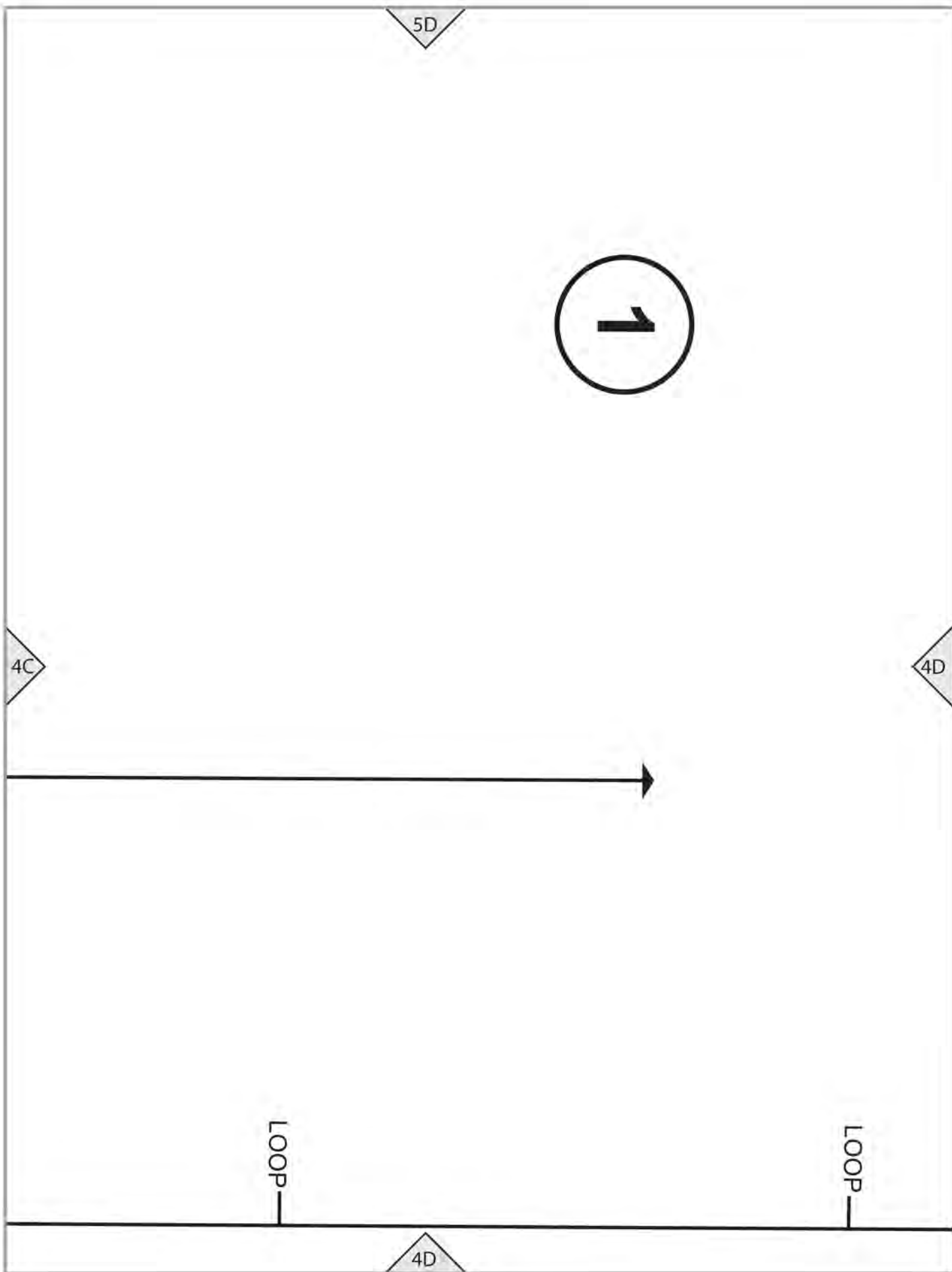
5C

4B

4C

GRAINLINE

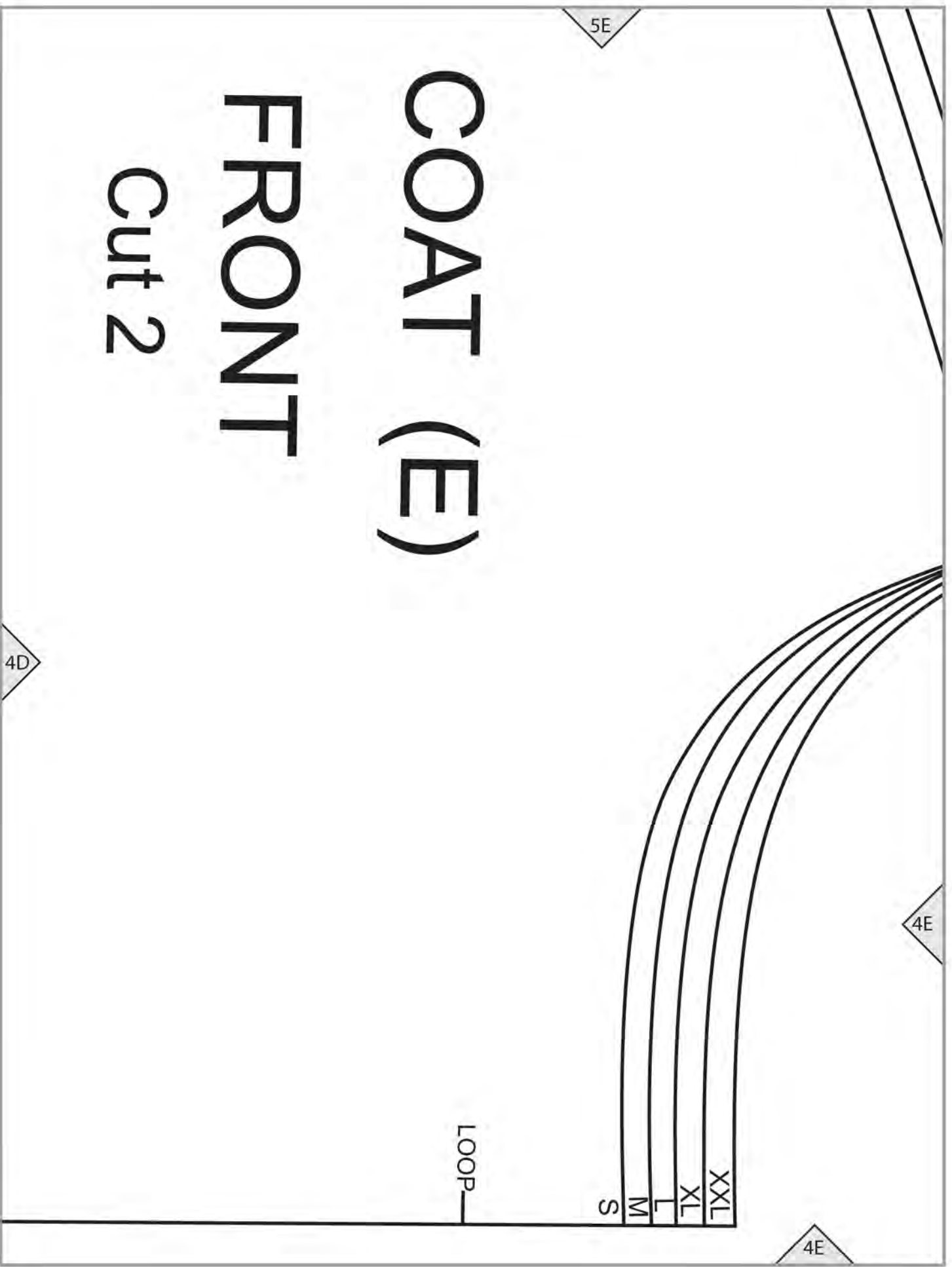
4C



# COAT (E)

# FRONT

## Cut 2



5E

4D

4E

4E

LOOP

XXL  
XL  
L  
M  
S

5F

7  
X  
X

7X

7

W

S

4F

4E

4F



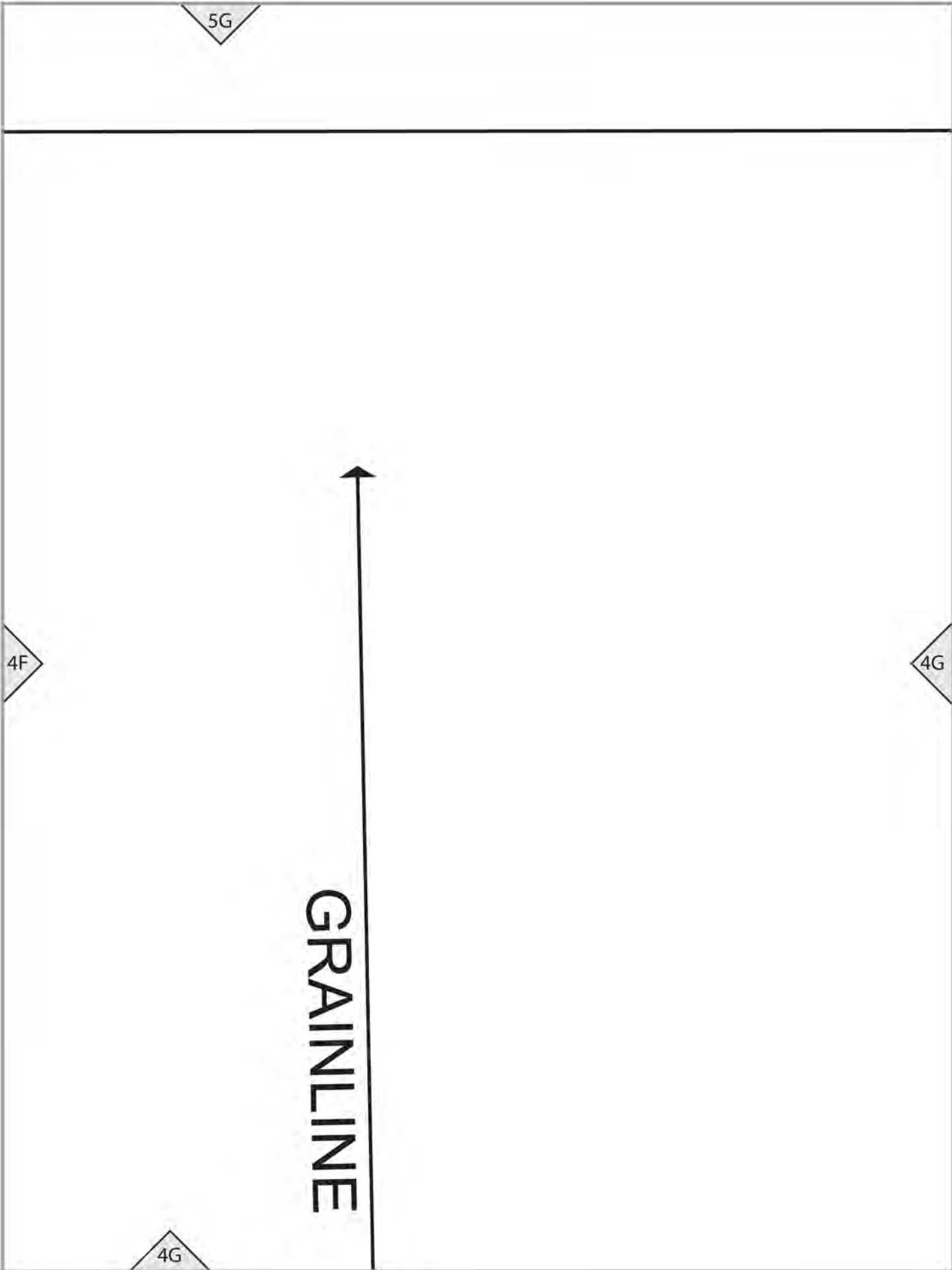
5G

4F

4G

4G

GRAINLINE



5H

THE **MAGIC**  **PATTERN** BOOK  
BY AMY BARICKMAN

workman  
workman.com

**EMMA (E2)**

**TEST SQUARE**  
4" (10 cm)

4G

4H

4H

5l

4H

Place on FOLD

6

COLLA

Cut 2 on FOLD  
Cut 1 on FOLD

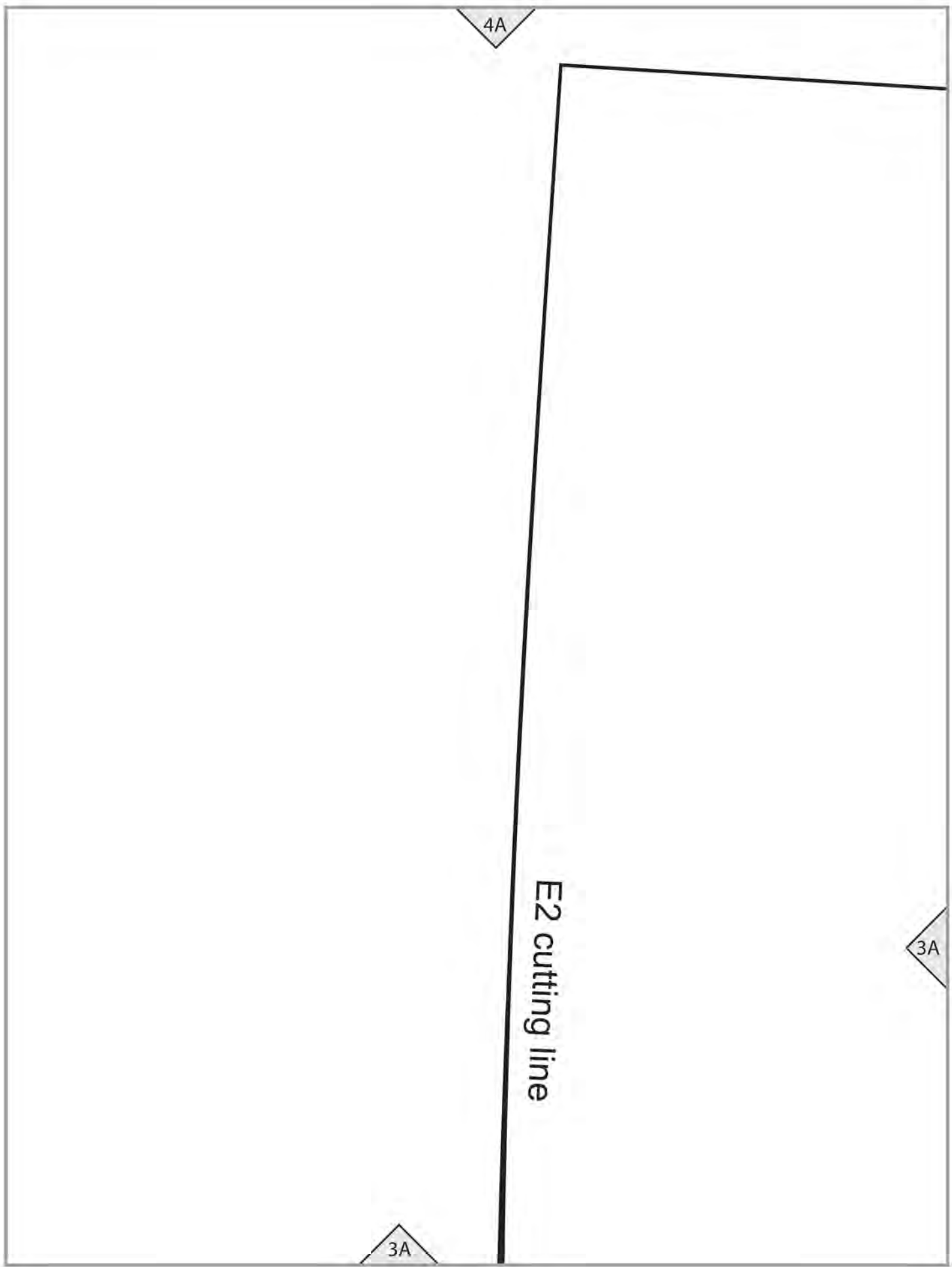
4l

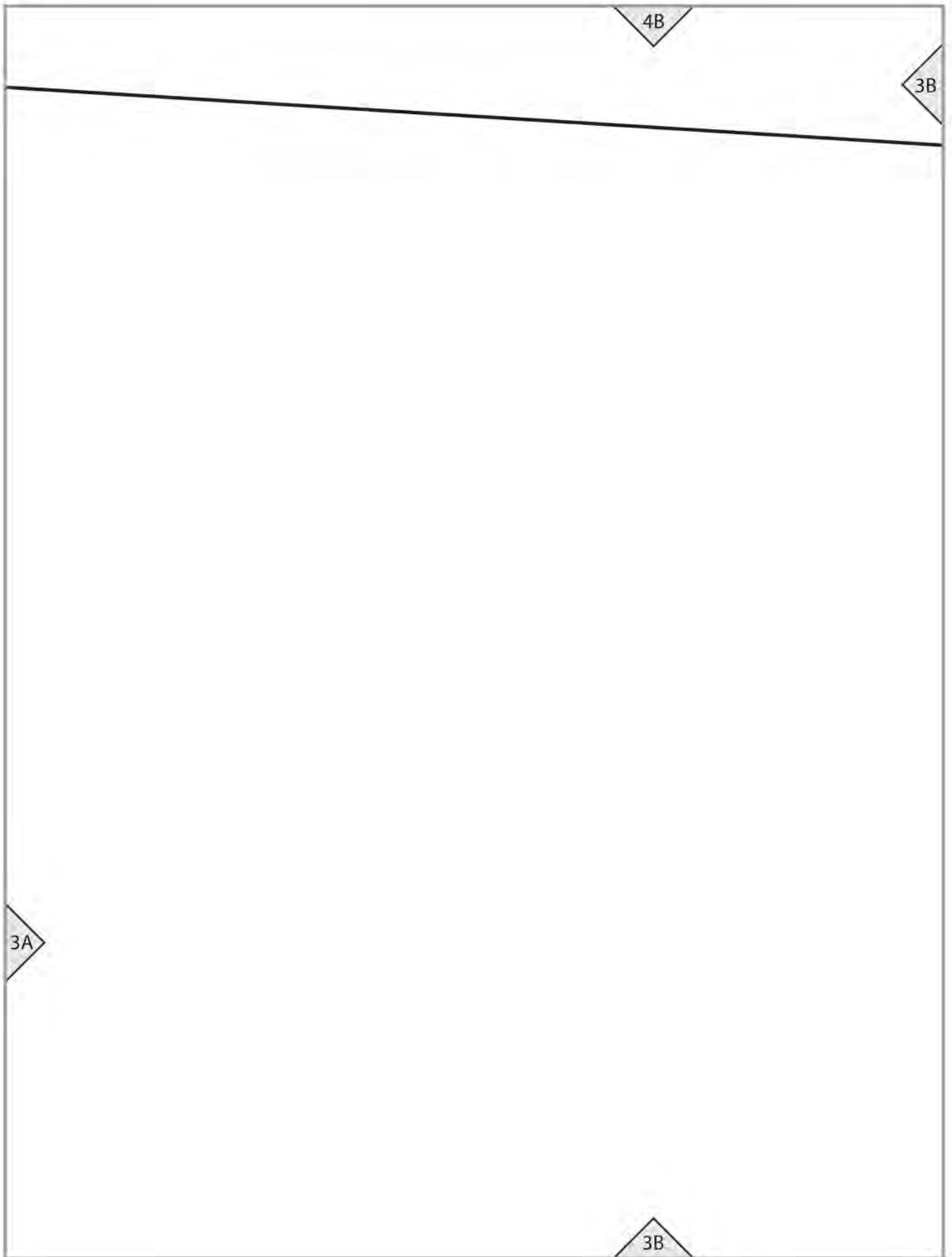
4A

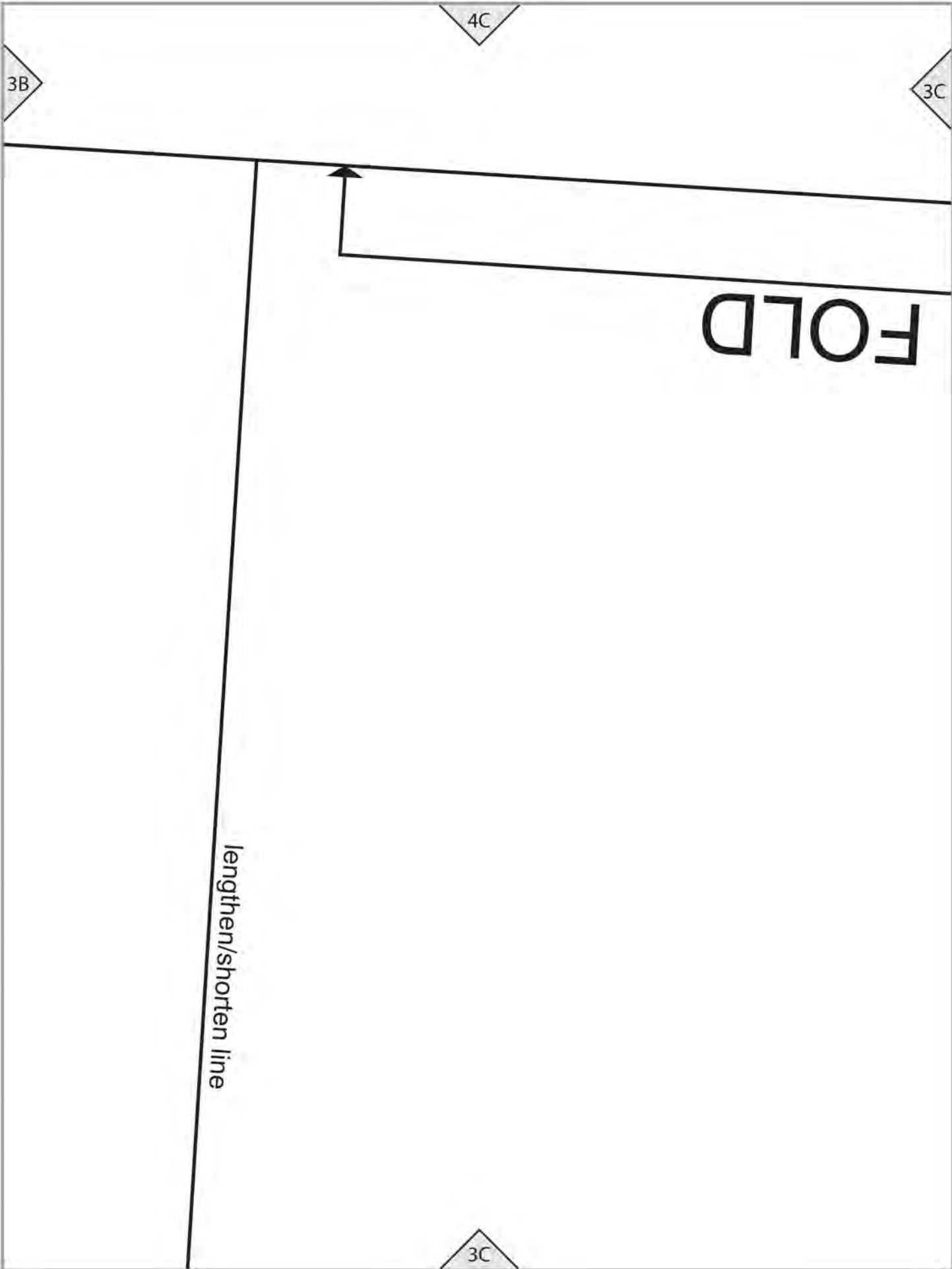
E2 cutting line

3A

3A







4C

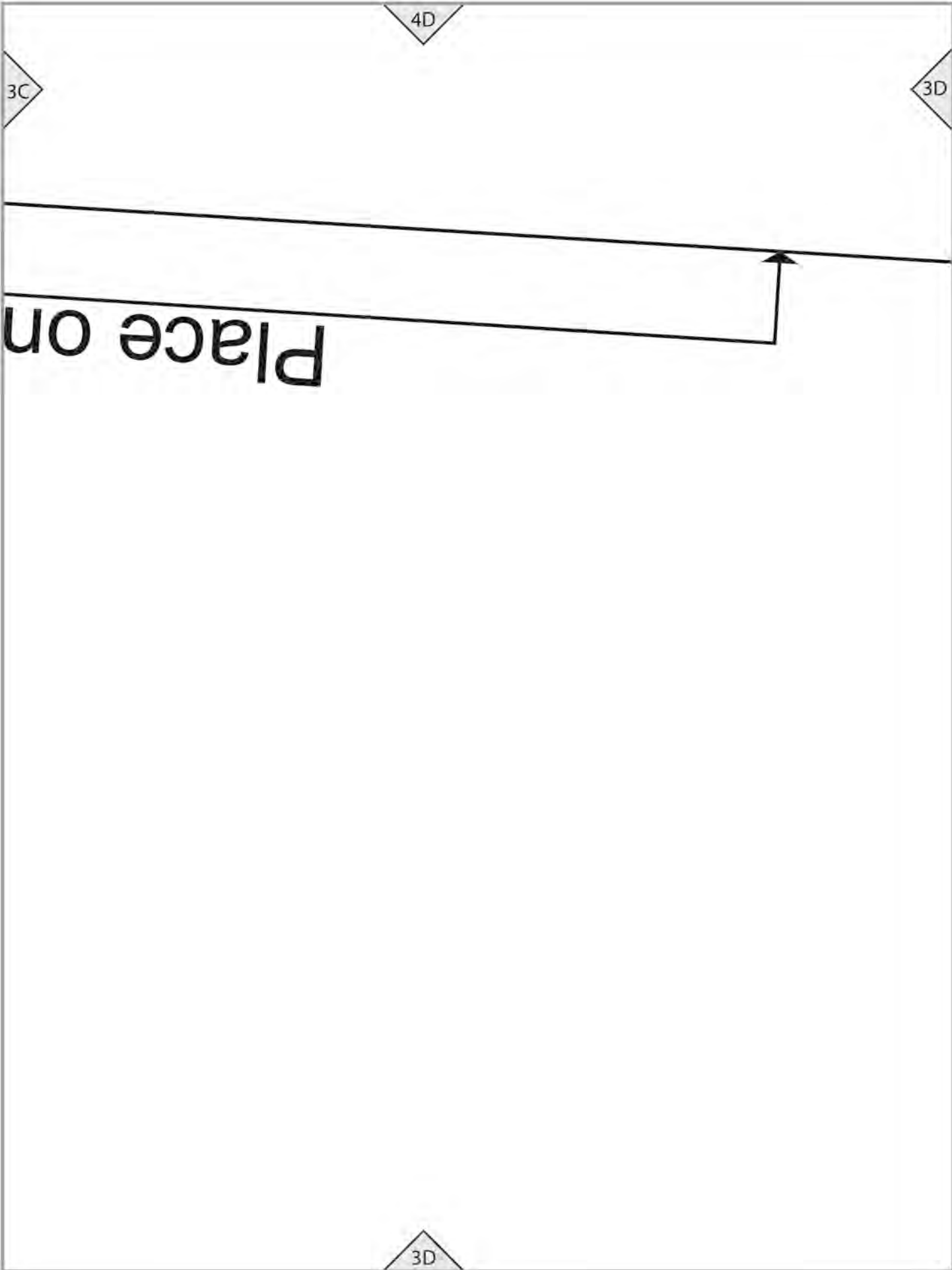
3B

3C

FOLD

lengthen/shorten line

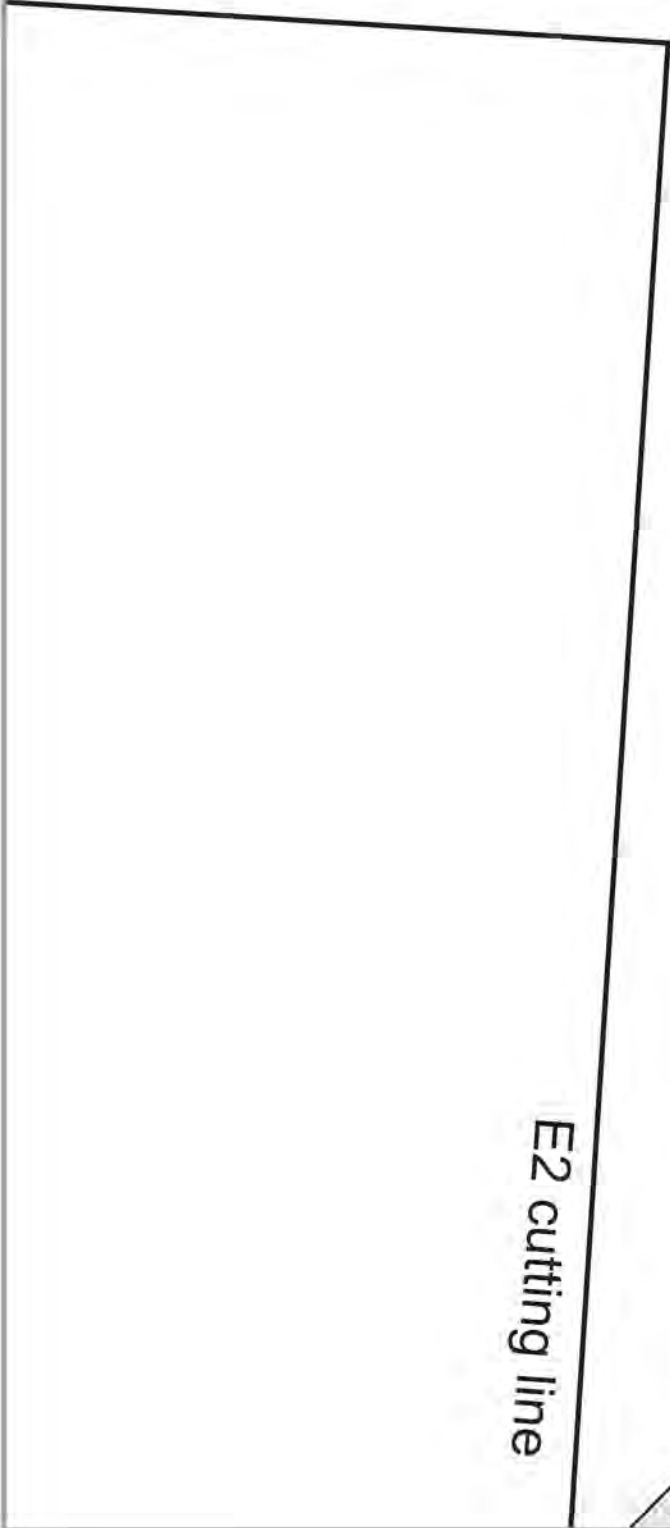
3C



3D

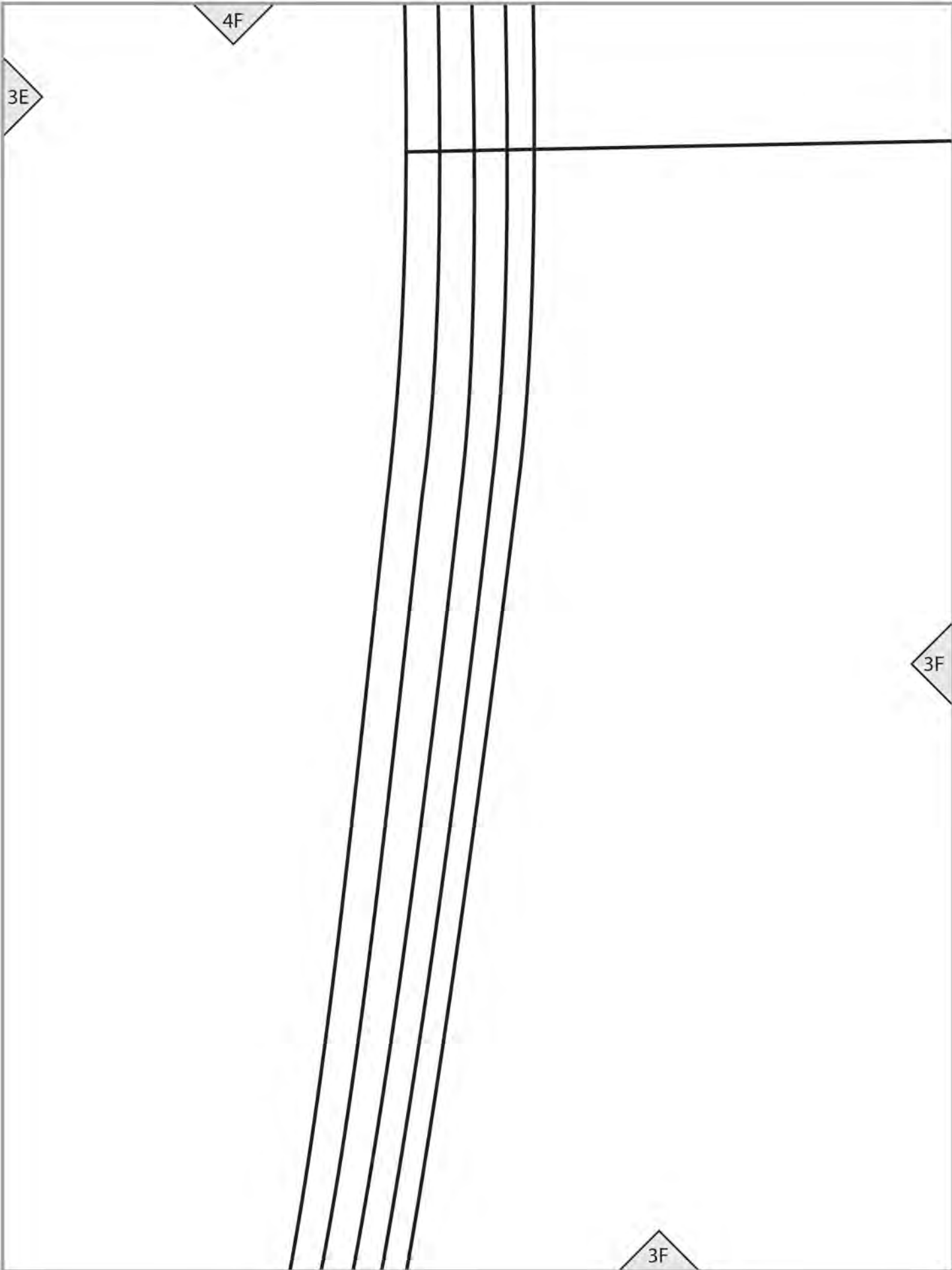
4E

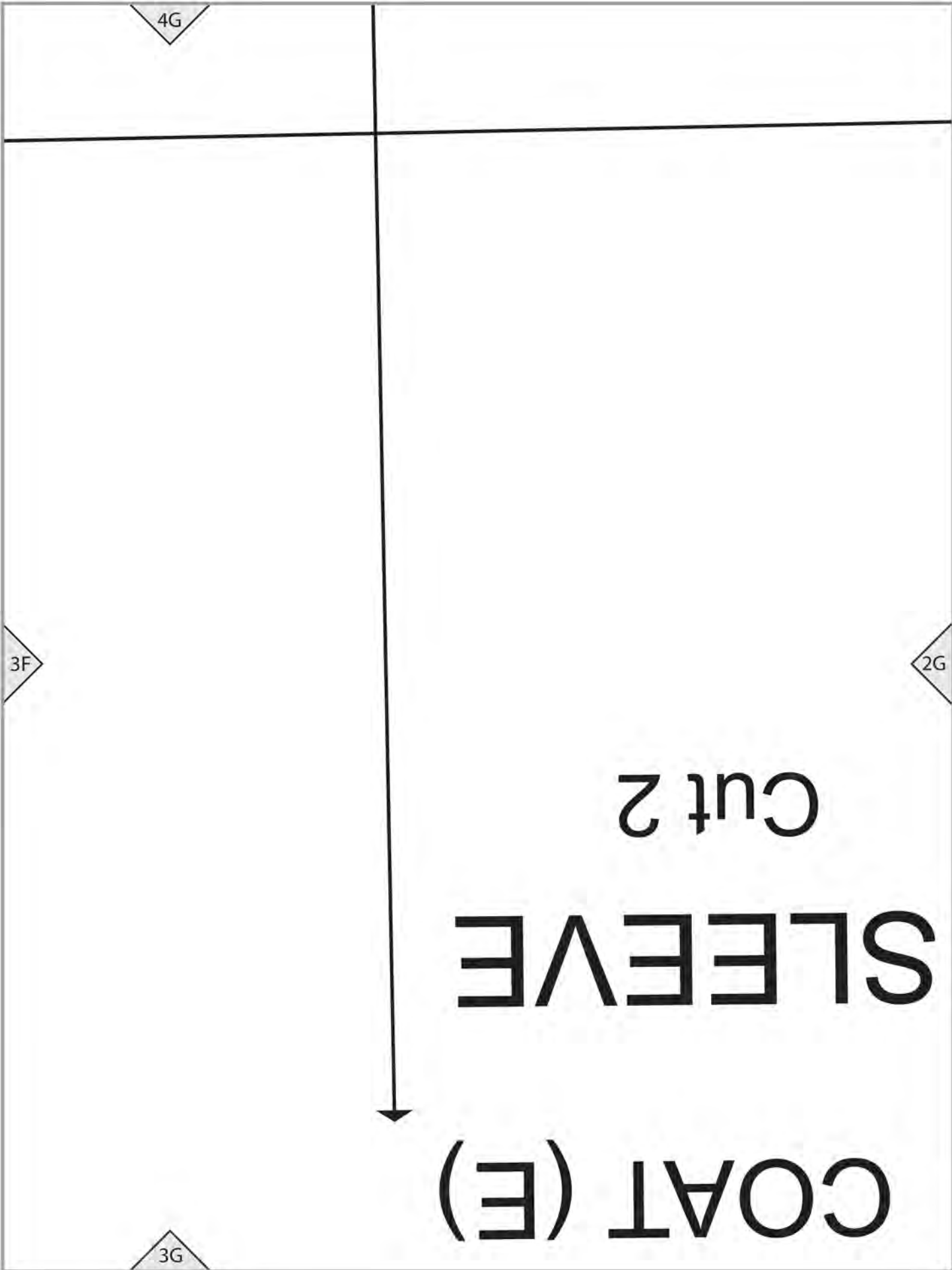
3E



3E







4H

lengthen/shorten line

3

2G

2H

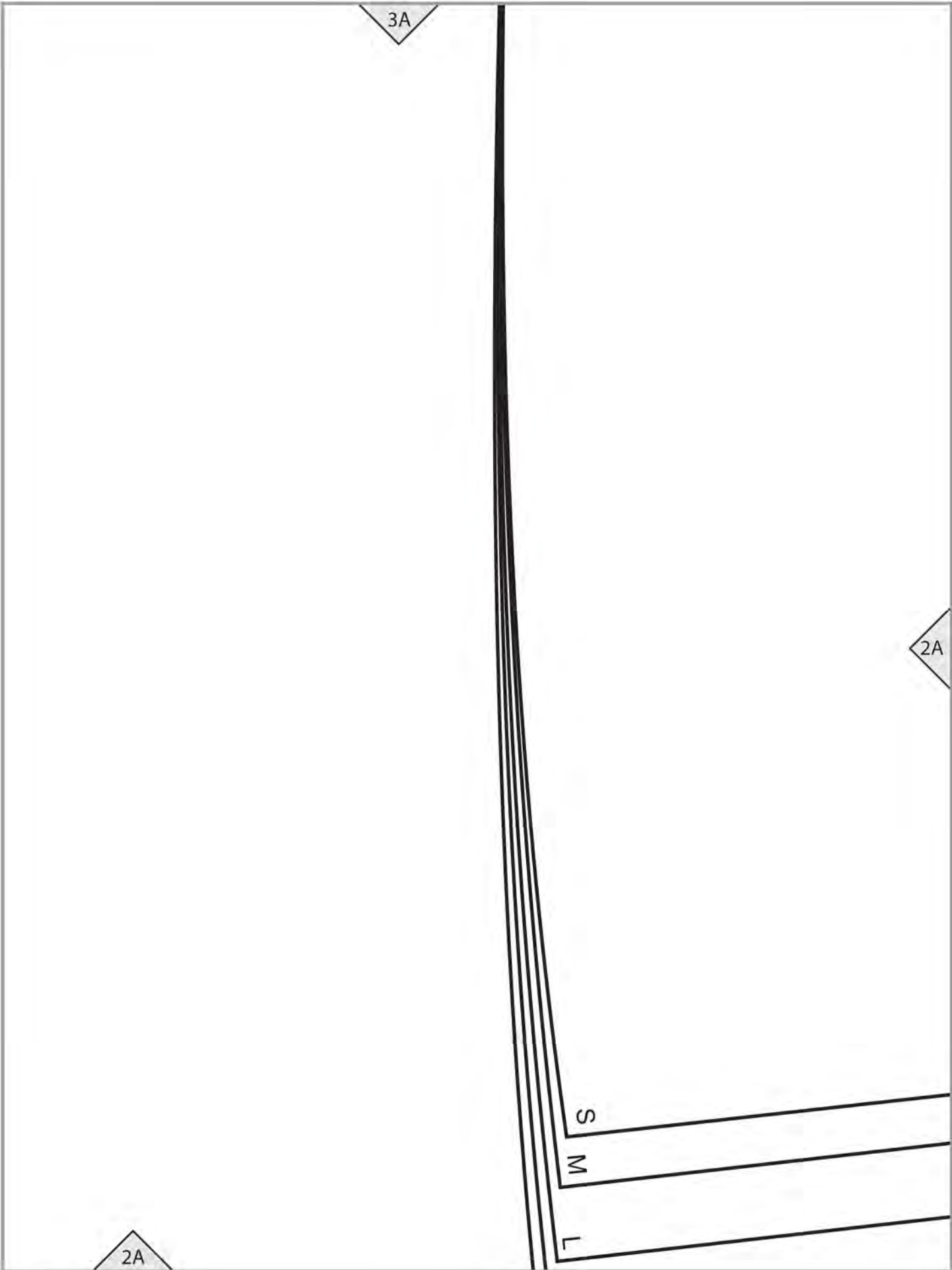
3H

R  
of fabric  
of interfacing

COAT (E)  
Size S, M

S  
M





3A

2A

2A

S

M

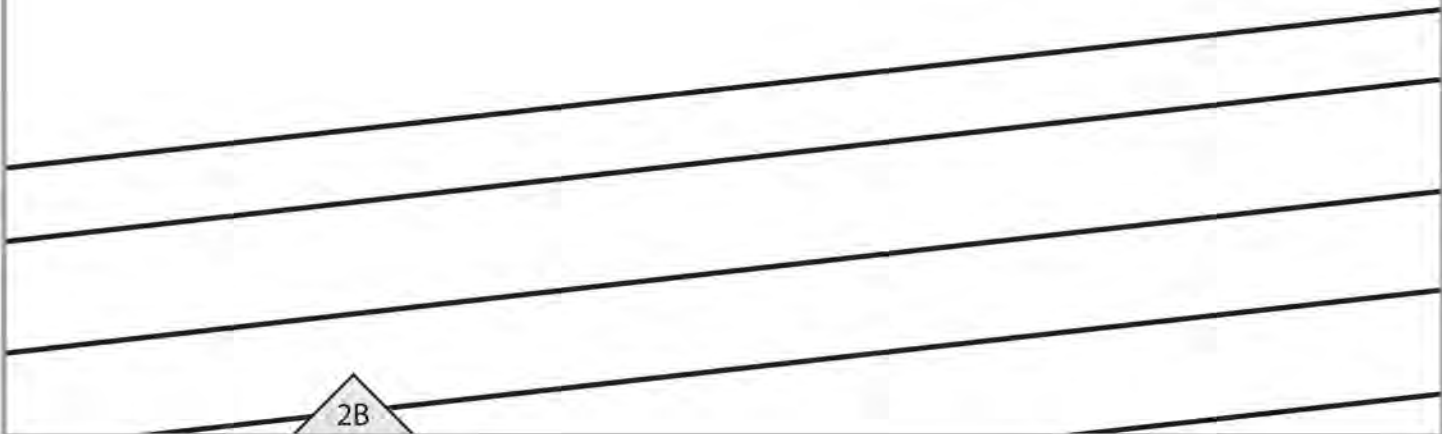
L

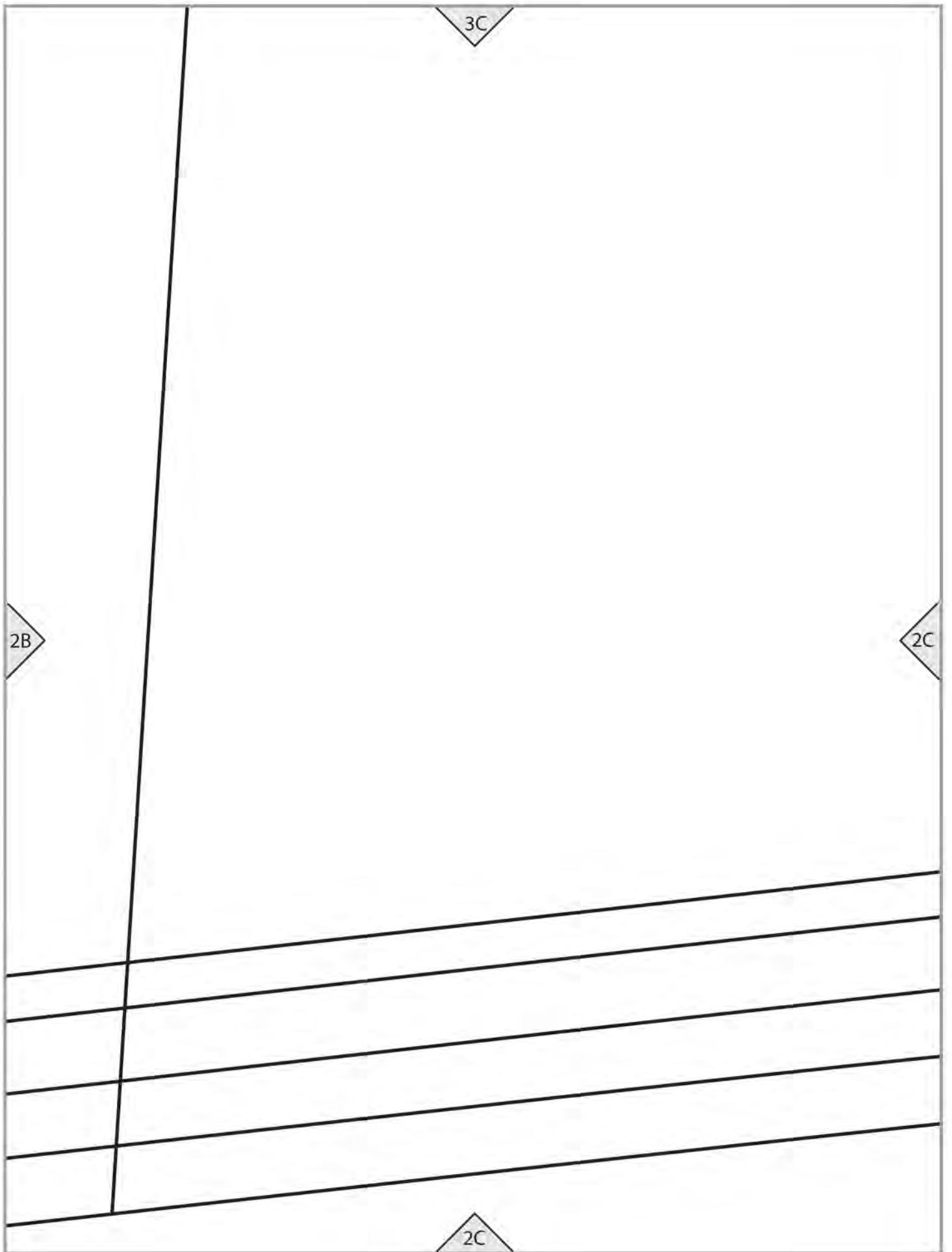
3B

2A

2B

2B





3D

**COAT (E)**

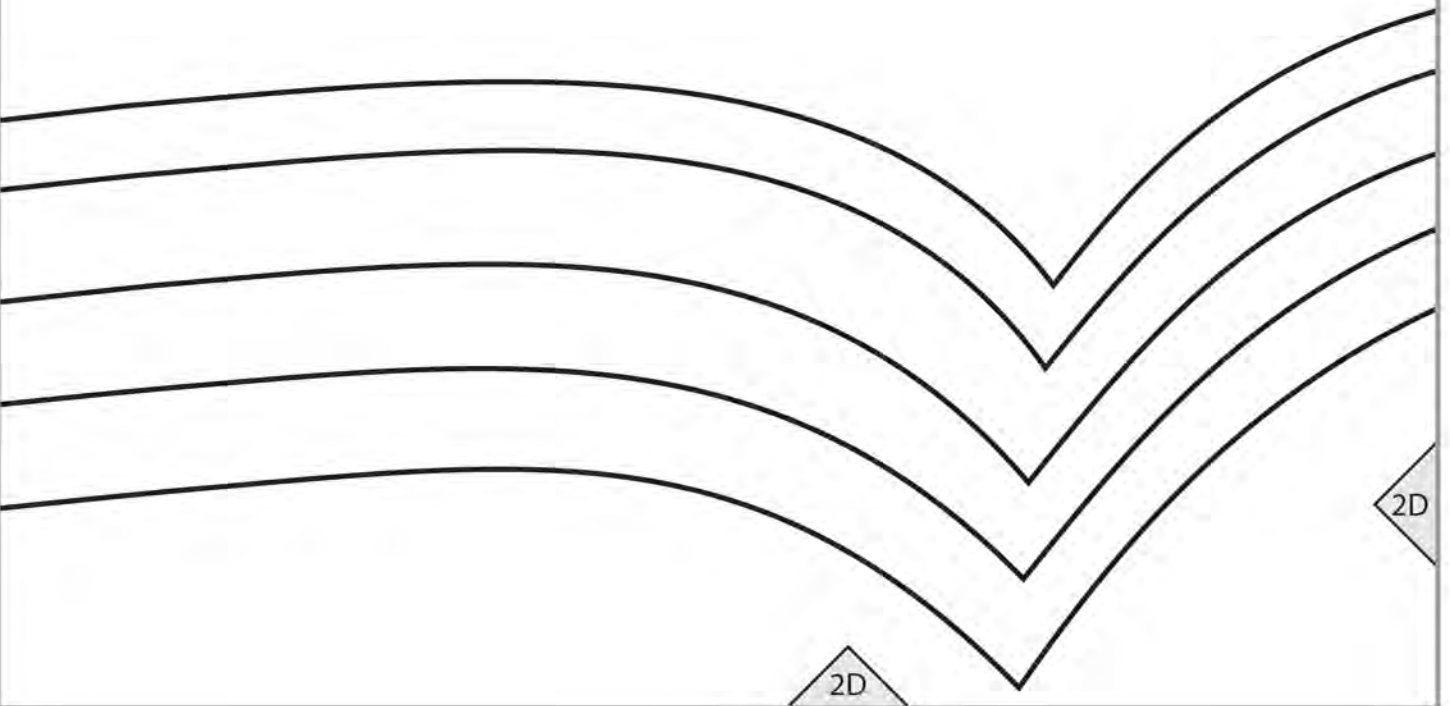
**BACK**

**Cut 1 on FOLD**

2C

2D

2D





2

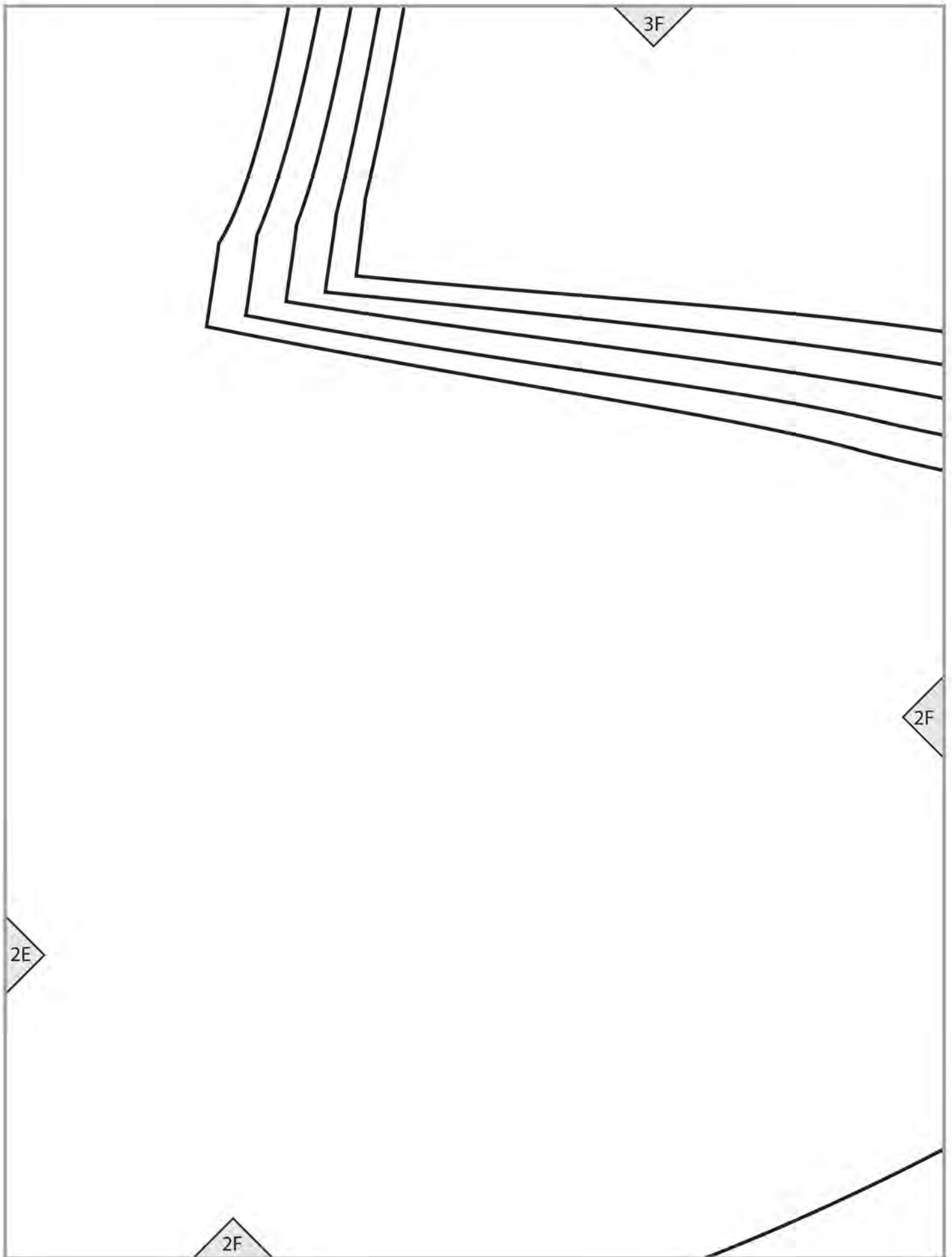
S  
M  
L  
XL  
XXL

3E

2D

2E

2E



3G

SO  
WO  
TO  
TXO  
TXXO

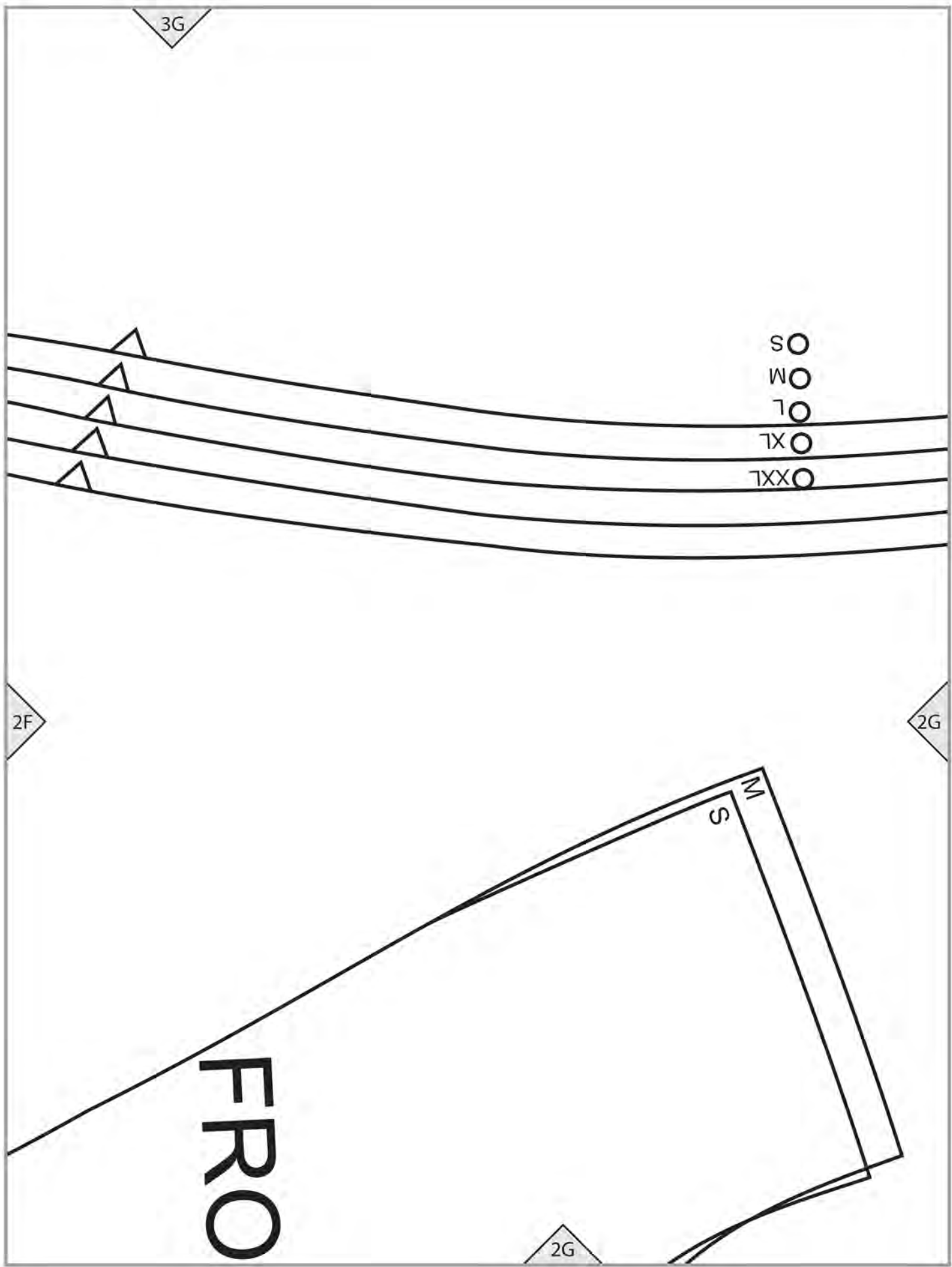
2F

2G

FRO

SM

2G



3H

2H

2G

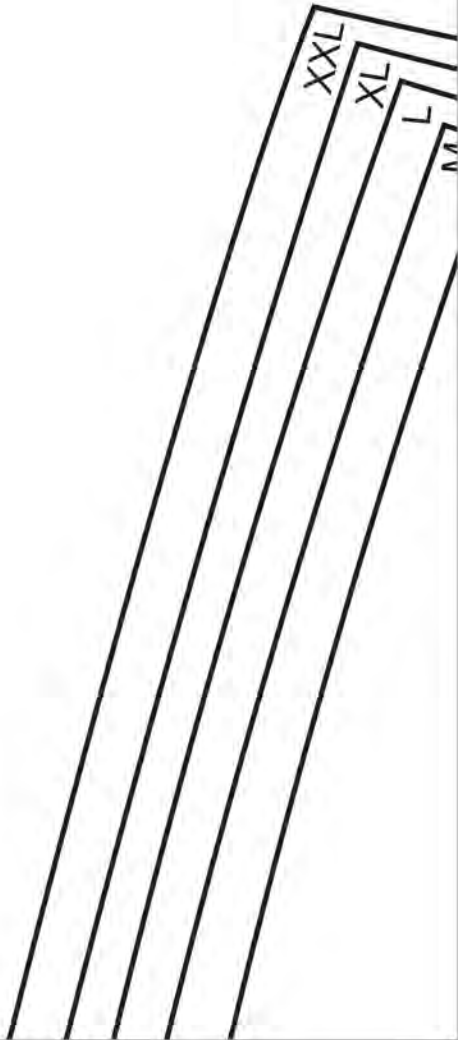
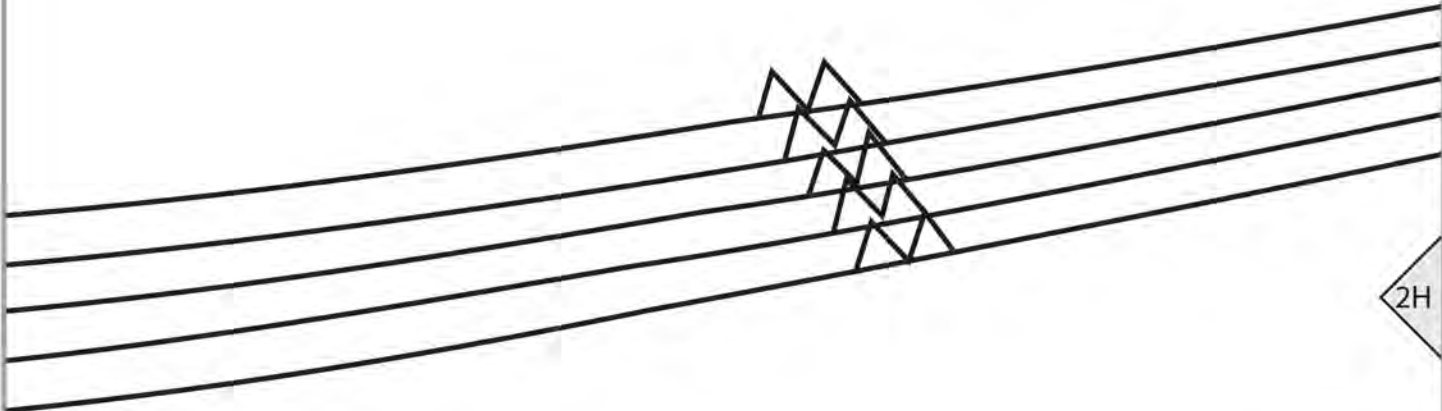
2H

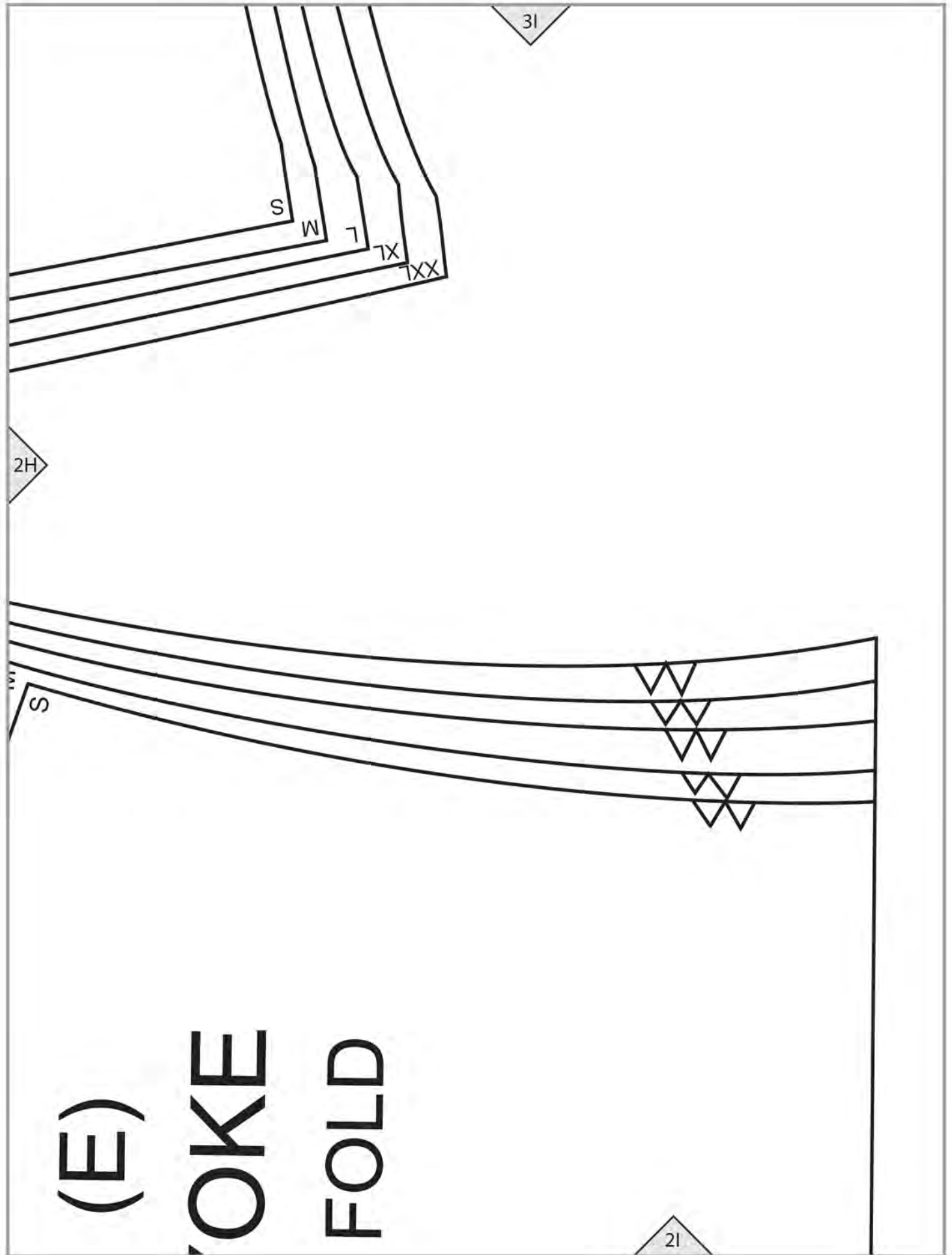
XXL

XL

L

M





2A

XL

XXL

1A

XL

M

COAT (E)

5

BACK FACING

Cut 1 on FOLD of fabric  
Cut 1 on FOLD of interfacing

Size M, XL

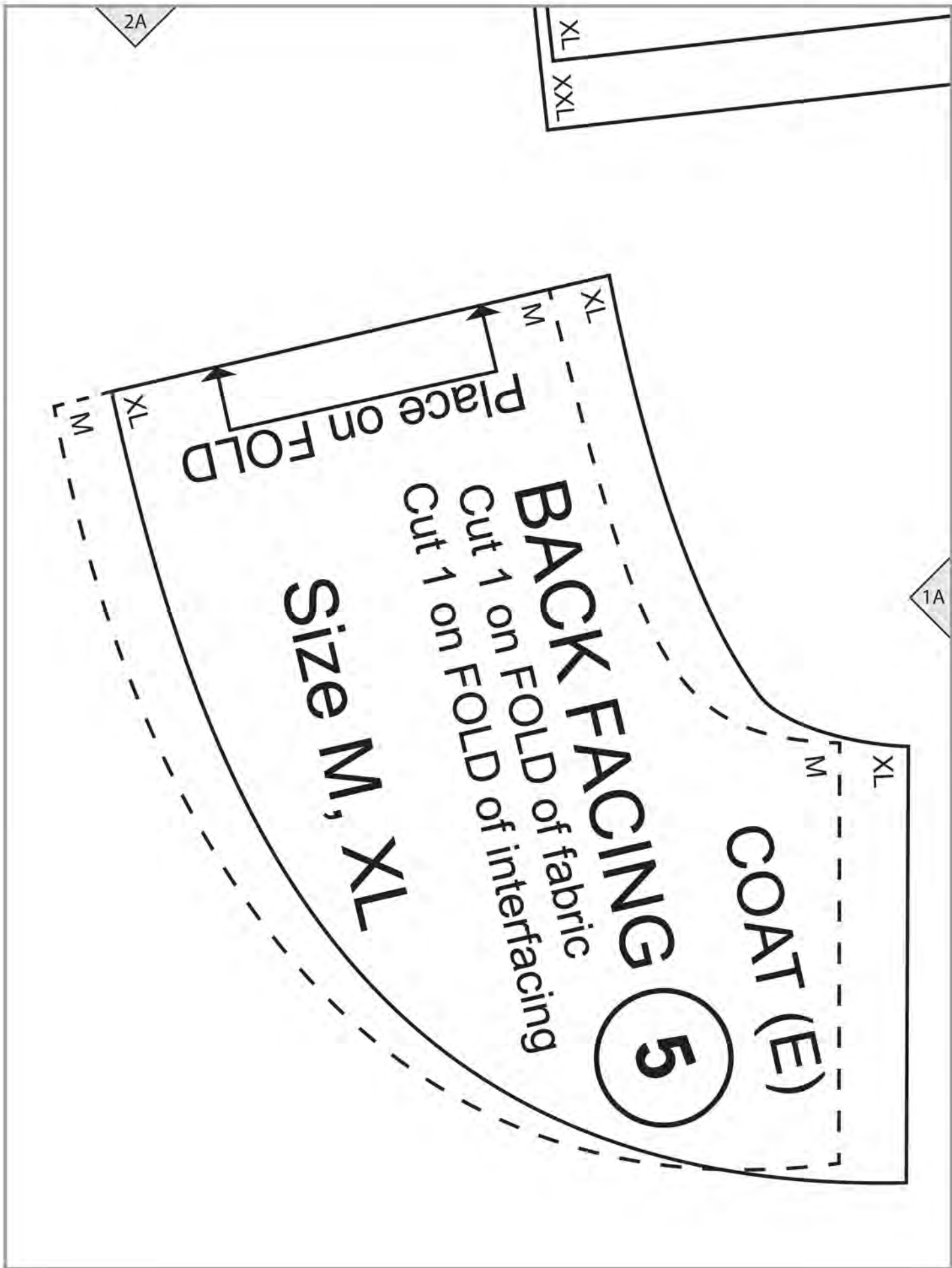
Place on FOLD

XL

M

XL

M



2B

1B

1A

XXL

Place on FOLD

XXL

5

**BACK FACING**  
Cut 1 on FOLD of fabric  
Cut 1 on FOLD of interfacing  
Size L, **XXL**

XXL

**COAT (E)**

L

2C

1B

E2 cutting line



1C

**LOOP**  
Cut 1 on bias



2D

lengthen/shorten line

GRAINLINE

1C

1D

GRAINLINE

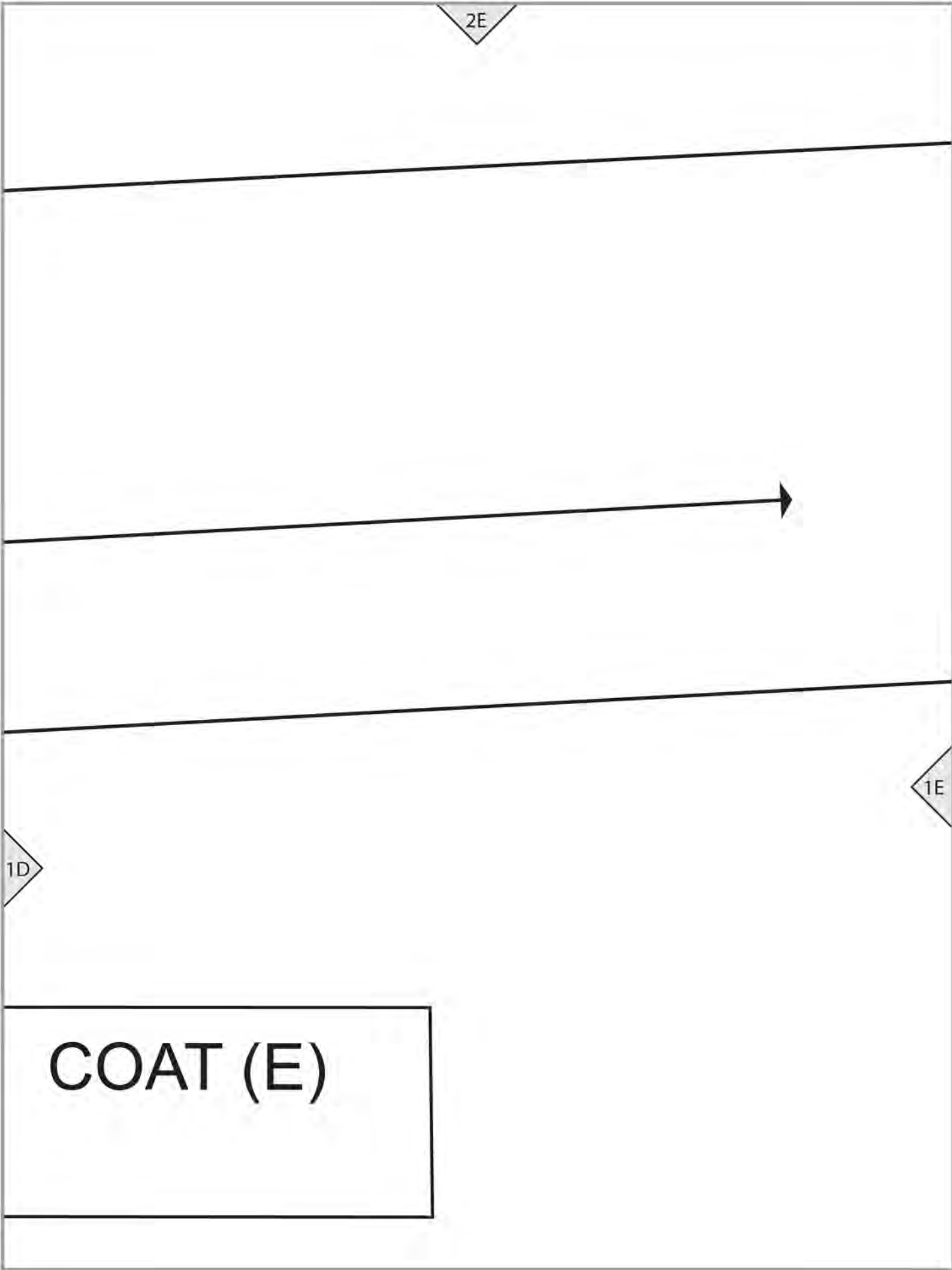
17

2E

1E

1D

COAT (E)



2F

Size S, M

4

1E

1F

X	X	L	XL	L	M	S
---	---	---	----	---	---	---

16

COAT (E)

CUFF

Cut 2



2G

M  
S

# COAT (E)

# NT FACING

Cut 2 of fabric

Cut 2 of interfacing

1G

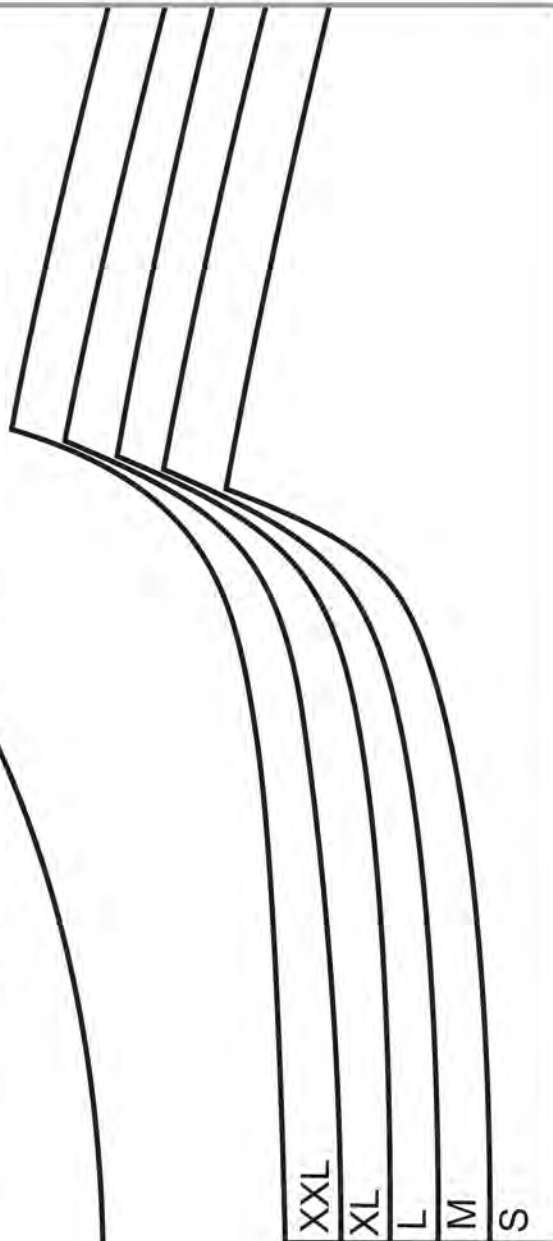
1F

S M L XL  
XXL

GRAINLINE



2H



XXL  
XL  
L  
M  
S

1H

S

COAT (E)

**BACK FACING**

Cut 1 on FOLD of fabric

Cut 1 on FOLD of interfacing

**5**

**Size S**

Place on FOLD

1G

**COAT**

**BACK Y**

**Cut 1 on**

**15**

**Place on FOLD**



21

1H