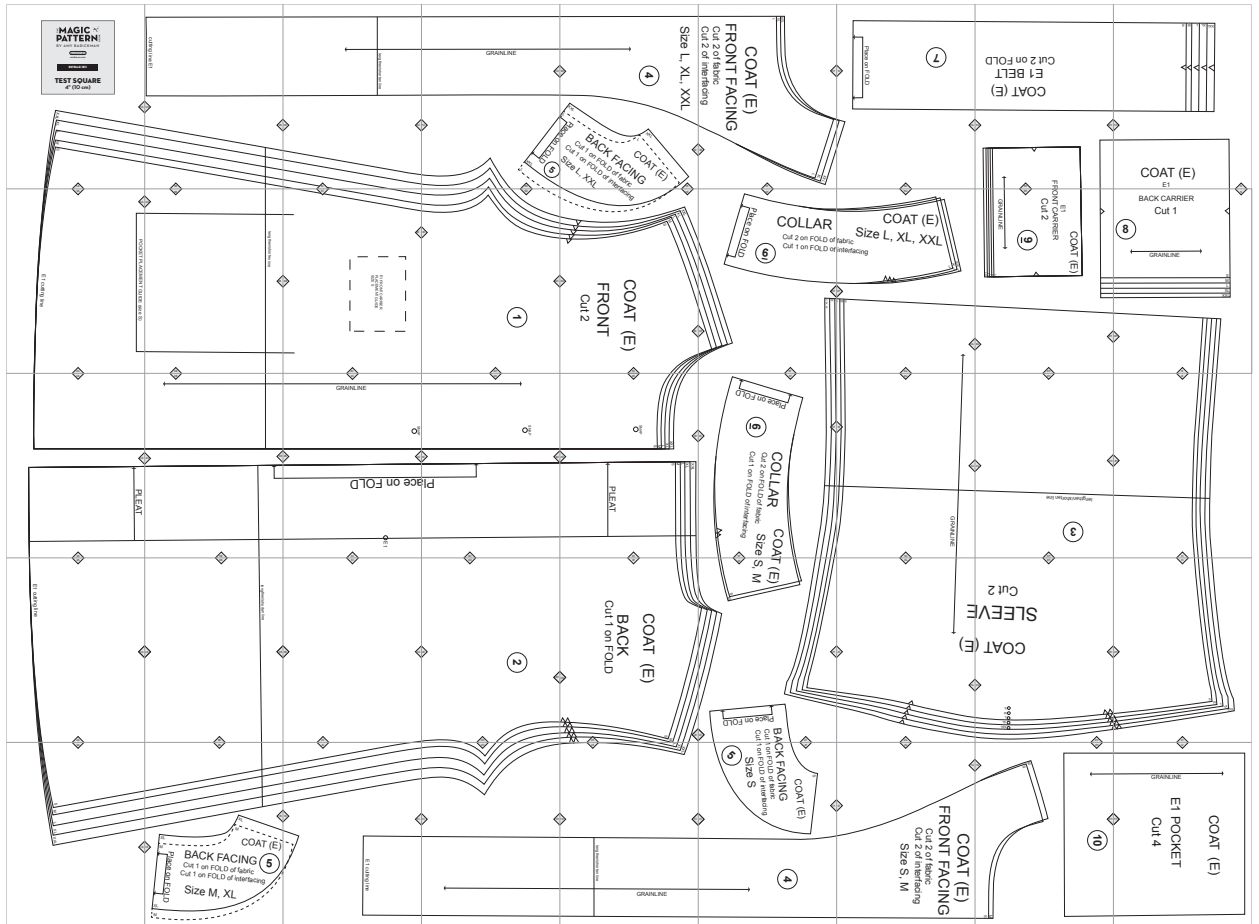


E1. Estelle



Copyright ©2014 by Amy Barickman

All rights reserved. Amy Barickman's patterns may be printed for personal use, but may not be otherwise reproduced—mechanically, electronically, or by any other means, including photocopying—without written permission of the publisher.

Sewing pattern designs for *The Magic Pattern Book* by Amy Barickman are intended for personal use only, and not as the basis for commercial manufacturing.

Workman Publishing, New York • workman.com

THE **MAGIC** 
PATTERN BOOK

BY AMY BARICKMAN

workman
workman.com

ESTELLE (E1)

TEST SQUARE
4" (10 cm)

5A

XXL
XL
L
M
S

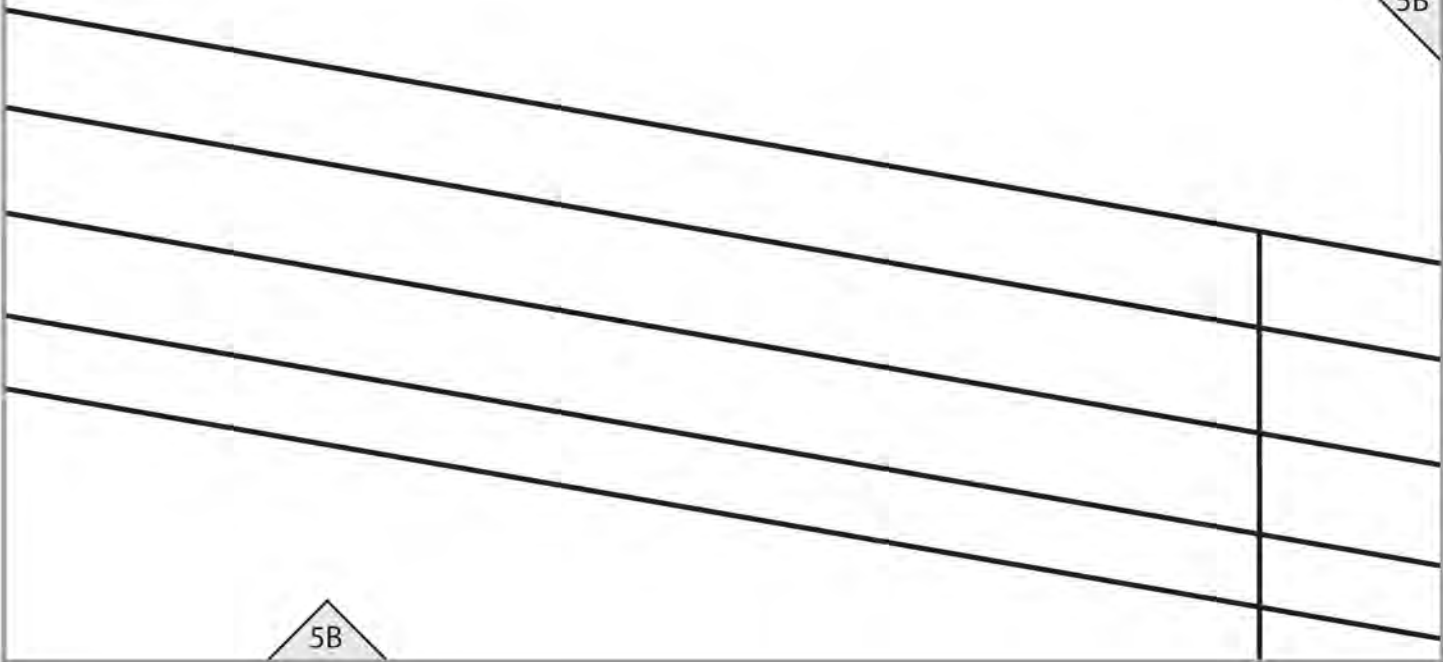
5A

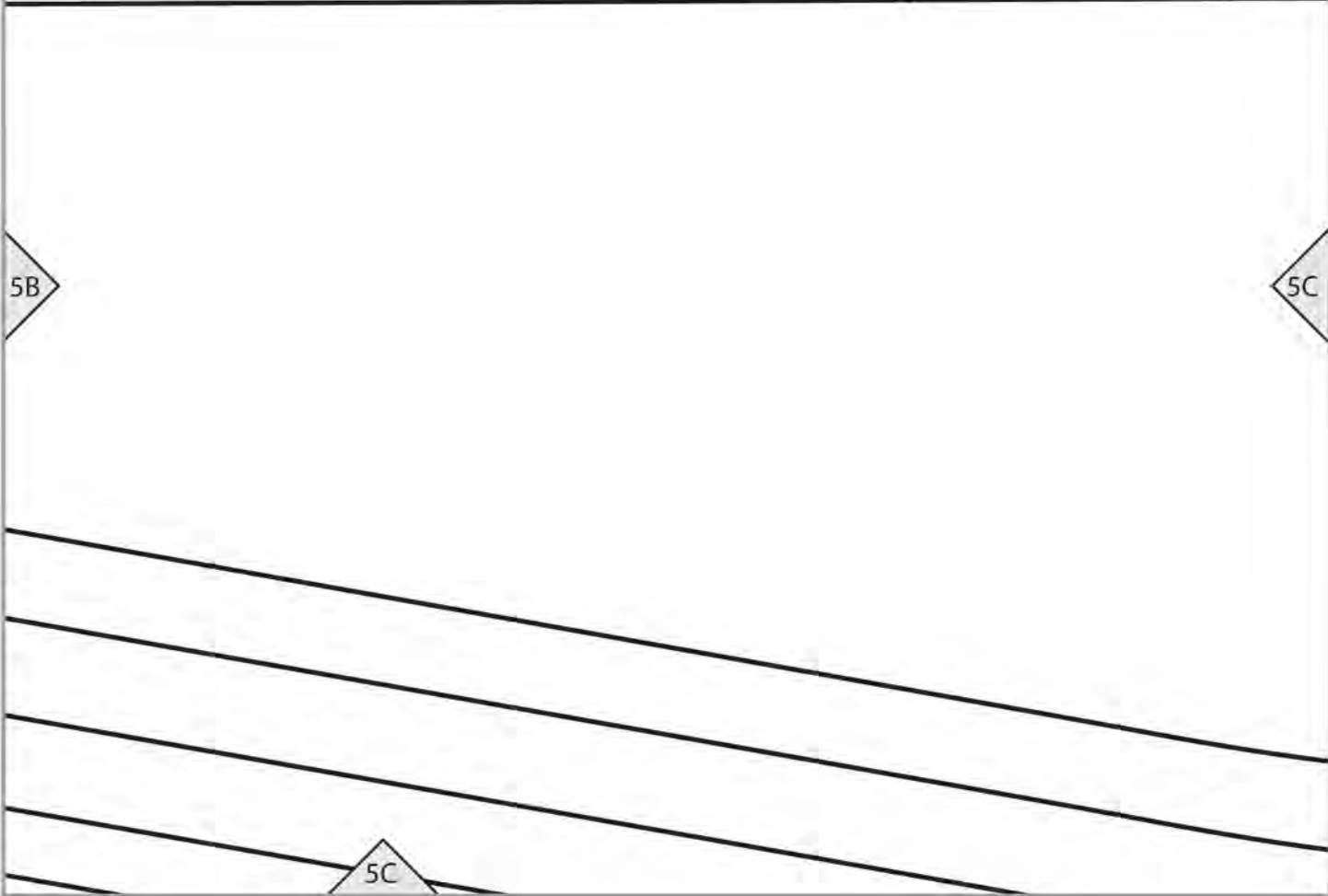
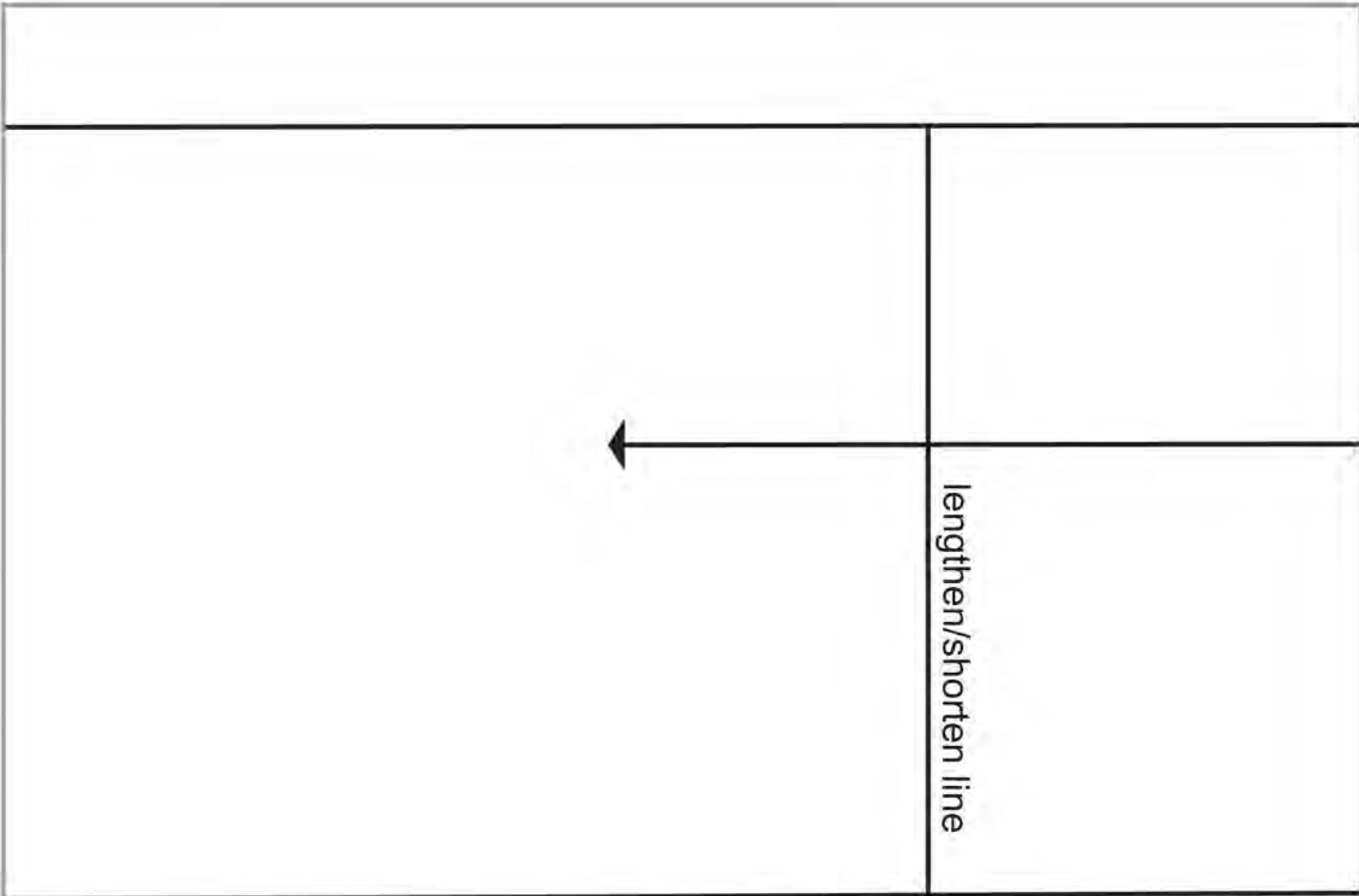
cutting line E1

5A

5B

5B





GRAINLINE

5D

5C

XXL

on FOLD

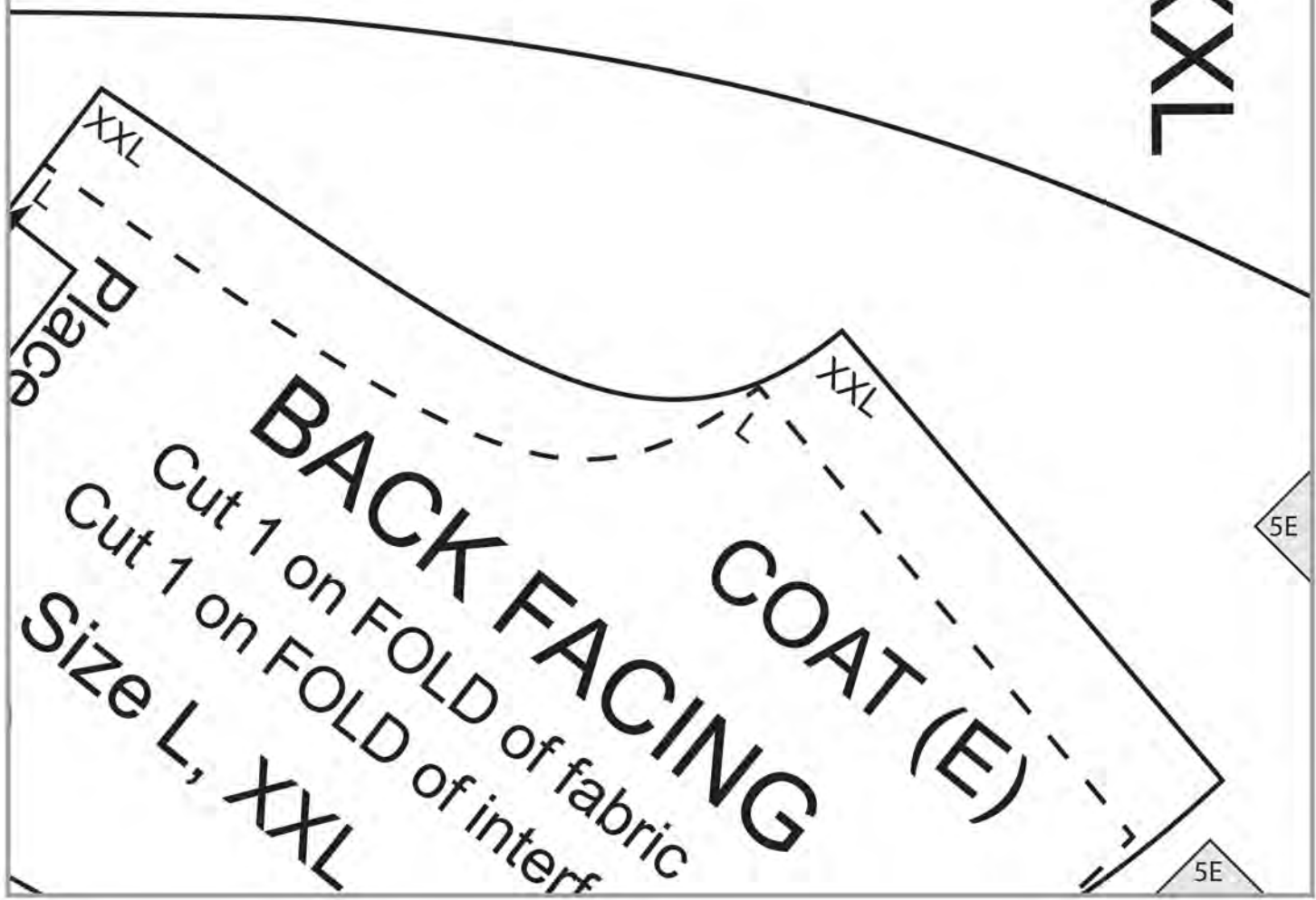
5

5D

Size L, XL, XXL

4

5D



5F

XXL
XL
L

L
XL
XXL

5F

5E

COAT (E)

FRONT FACING

Cut 2 of fabric
Cut 2 of interfacing



Place on FOLD



5F

5G

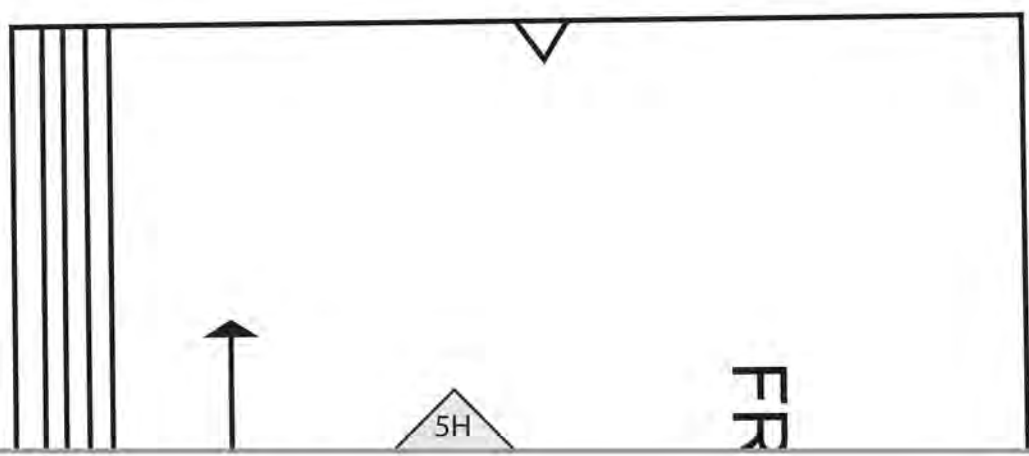
5G



**COAT (E)
E1 BELT
Cut 2 on FOLD**

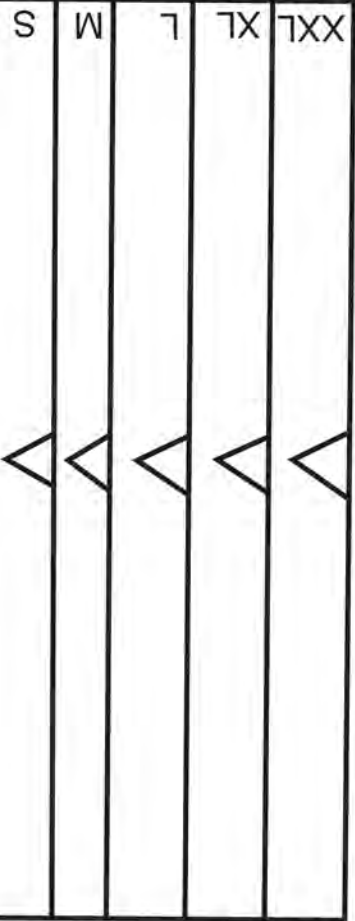
5G

5H



5H

FR



5H

COAT (E)

E1

5I

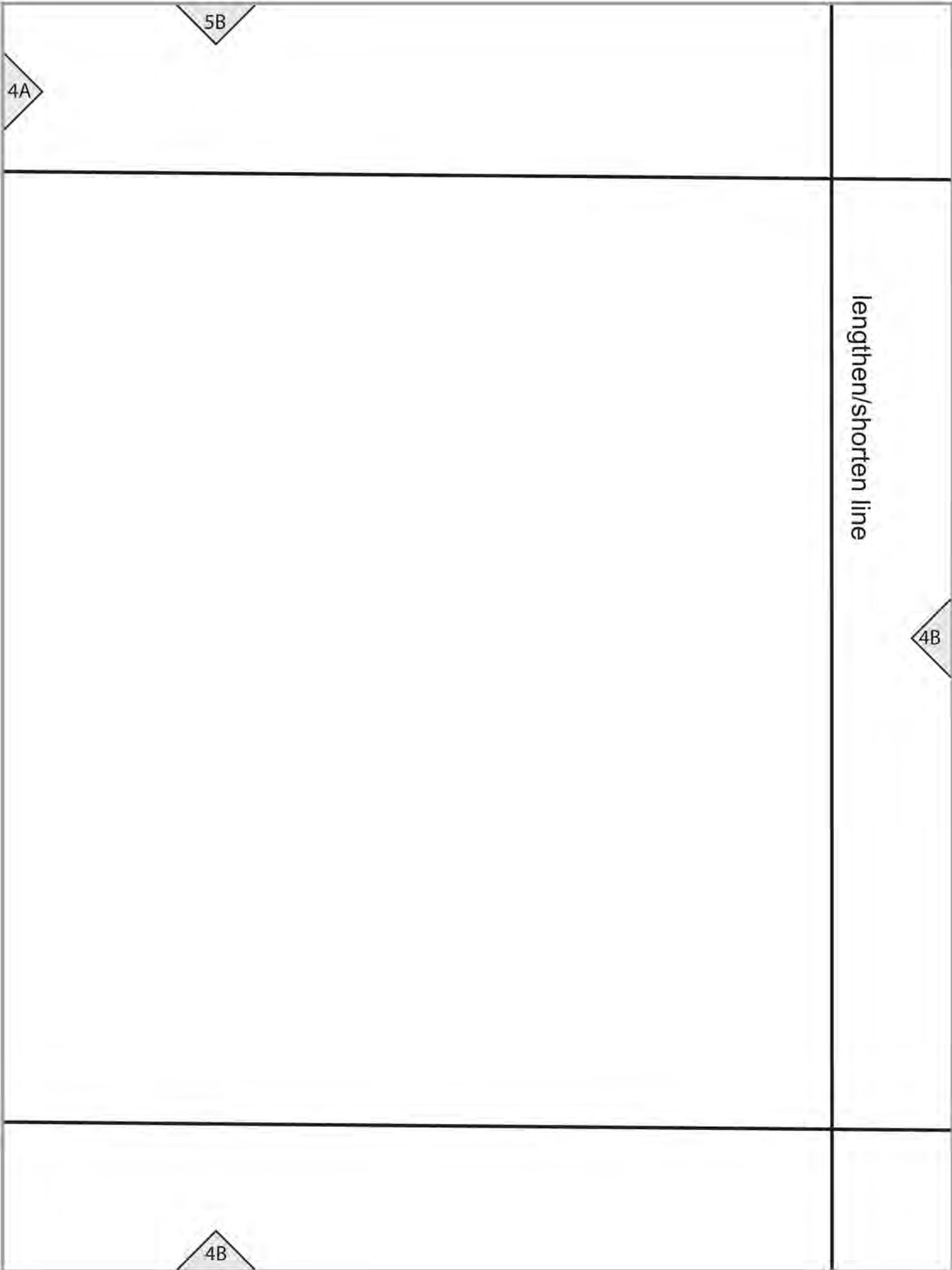
POCKET PLACEMENT GUIDE (size S)

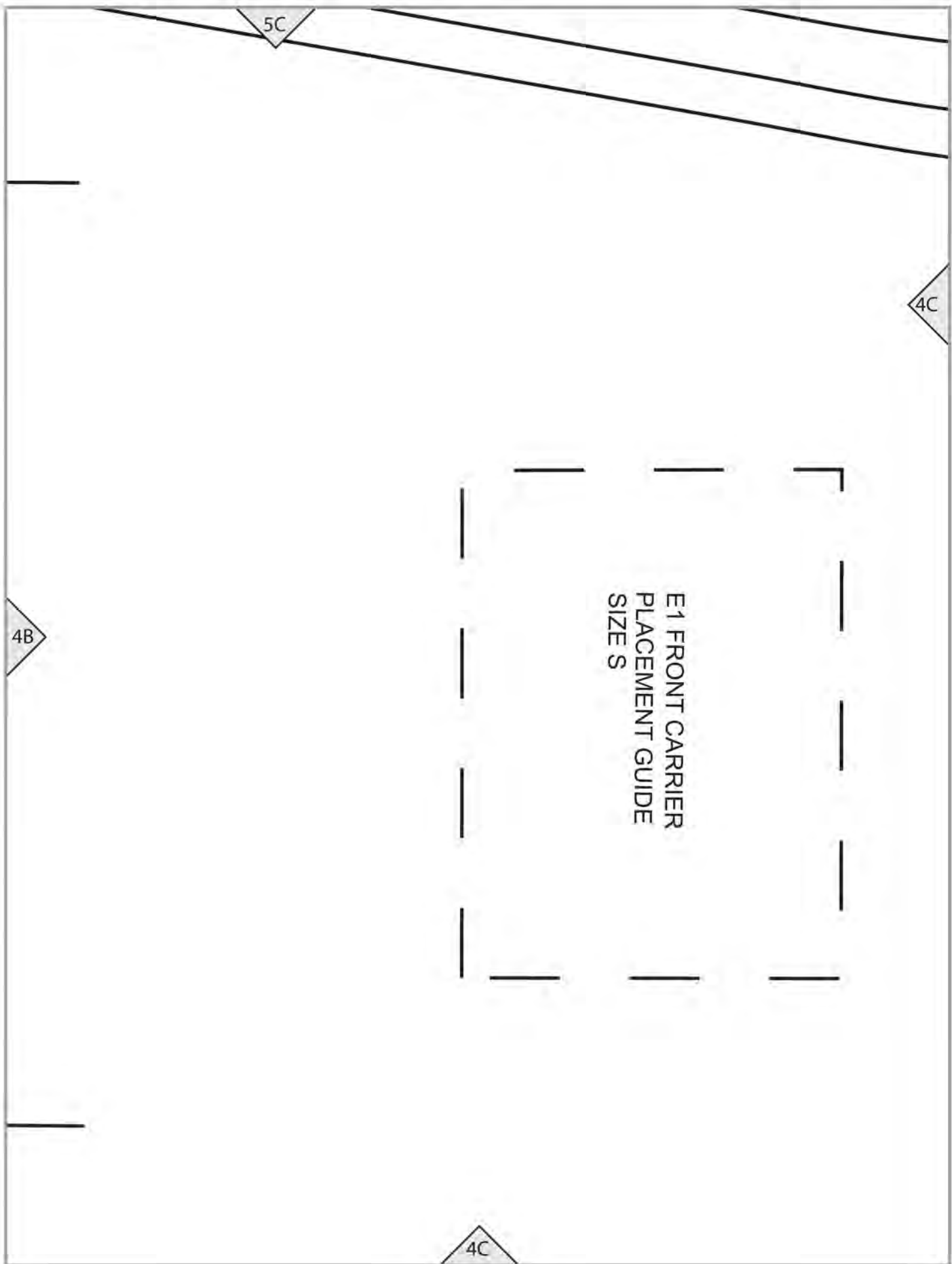
E1 cutting line

5A

4A

4A





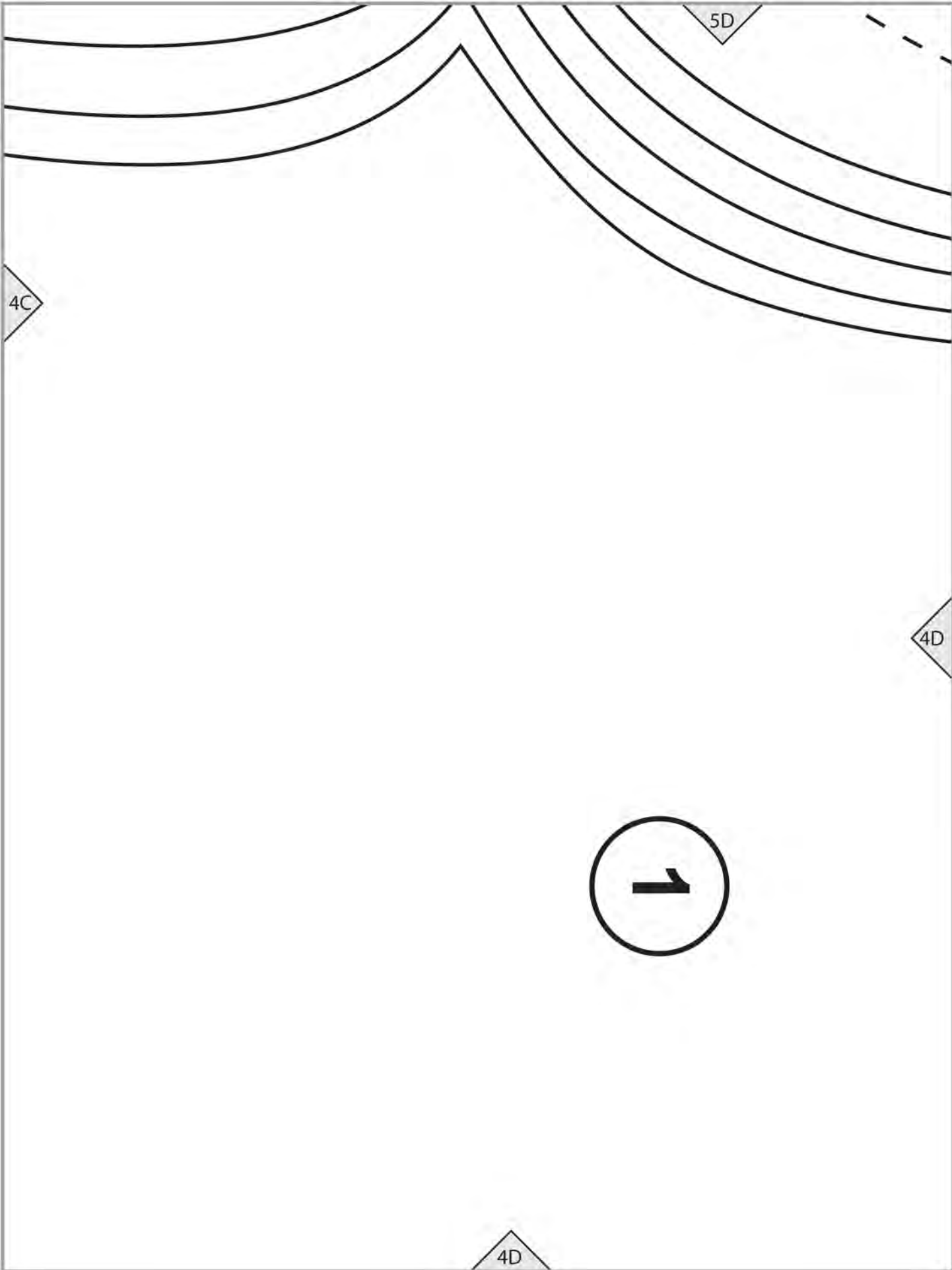
5C

4C

E1 FRONT CARRIER
PLACEMENT GUIDE
SIZE S

4B

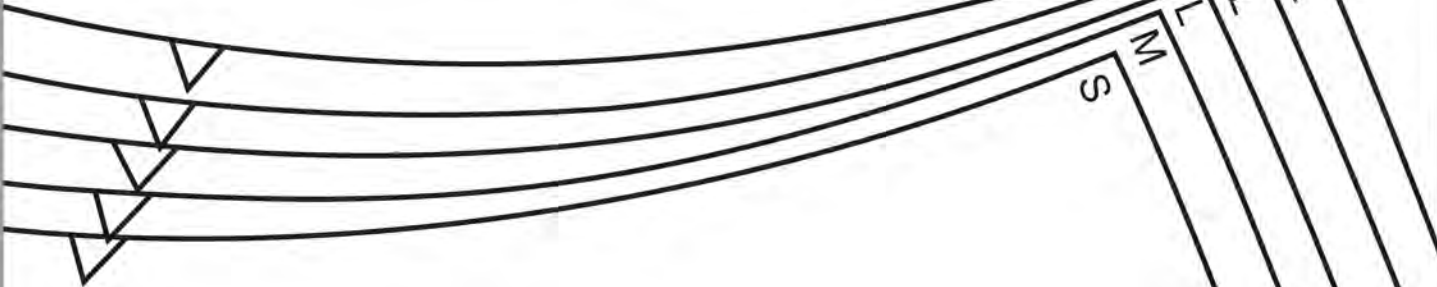
4C



acing

5E

S
M
L
XL
XXL

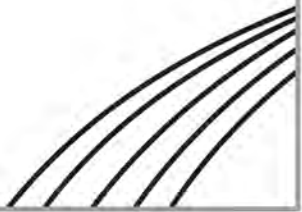


COAT (E)
FRONT
Cut 2

4D

4E

4E



5F

COLLAR

Cut 2 on FOLD of
Cut 1 on FOLD of

6

Place on FOLD

4F

TX
TX
TX

4E

4F

5G

COAT (E)

Size L, XL, XXL

fabric
interfacing

L X X
L L L



4F

T W S

4G

4G



COAT (E)

E1

FRONT CARRIER

Cut 2

9

GRAINLINE



S
M
L
XL
XXL

5H

4H

4G

4H

BACK CARRIER

Cut 1

5I

8

GRAINLINE

S

M

L

XL

XXL

4H

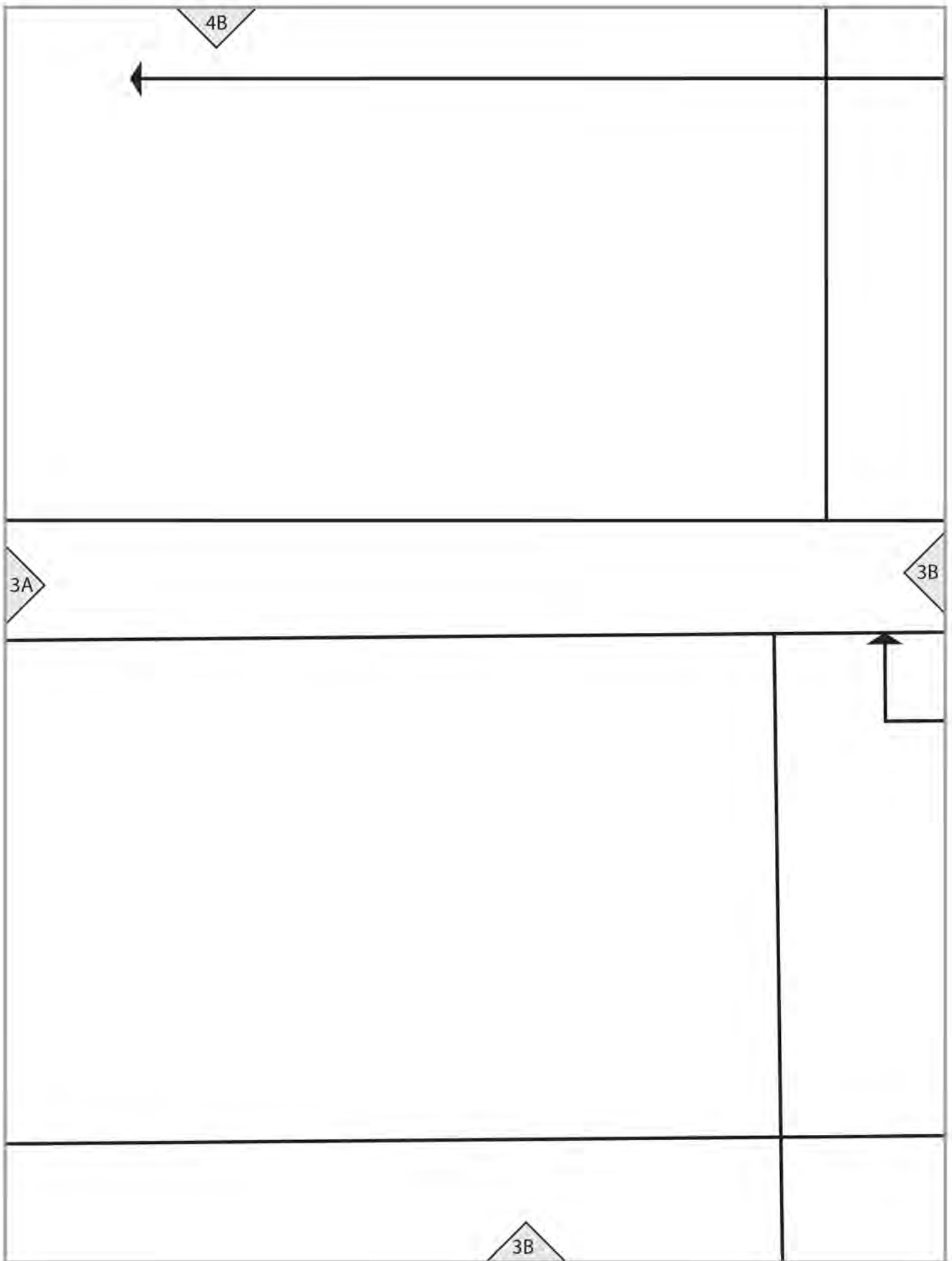
4I

4A

3A

PLEAT

3A



4C

GRAINLINE

SNAP
○

3B

3C

Face on FOLD

OE1

3C

4D

SNAP
○

3C

3D

Pl

3D

4E



3E

S
M
L
XL
XXL

3D

PLEAT

S
M
L
XL
XXL

3E

4F

Place on FOLD

6

COLLAR

COA

Cut 2 on FOLD of fabric

Cut 1 on FOLD of interfacing

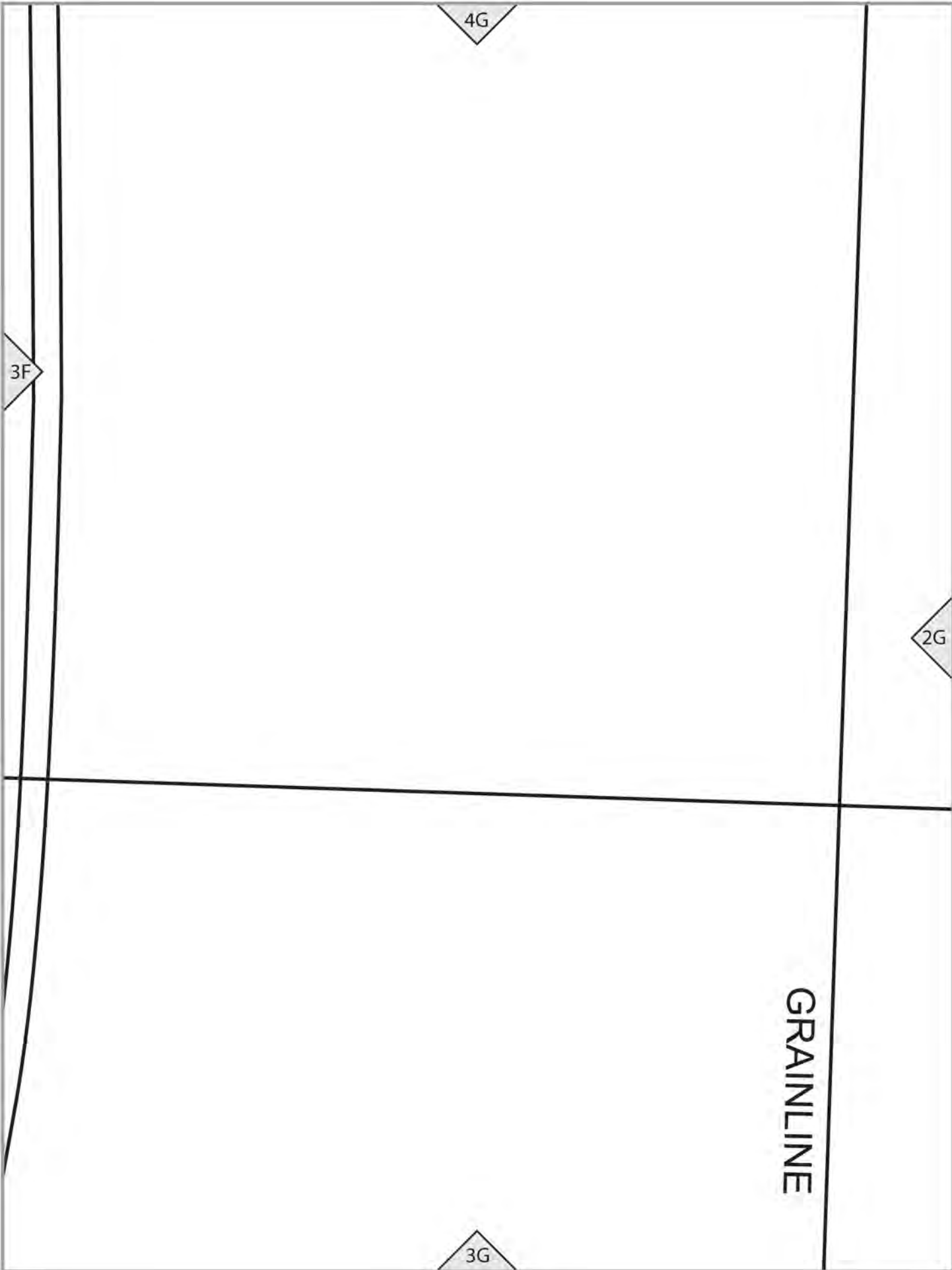
Size

3F

3E

3F





4H

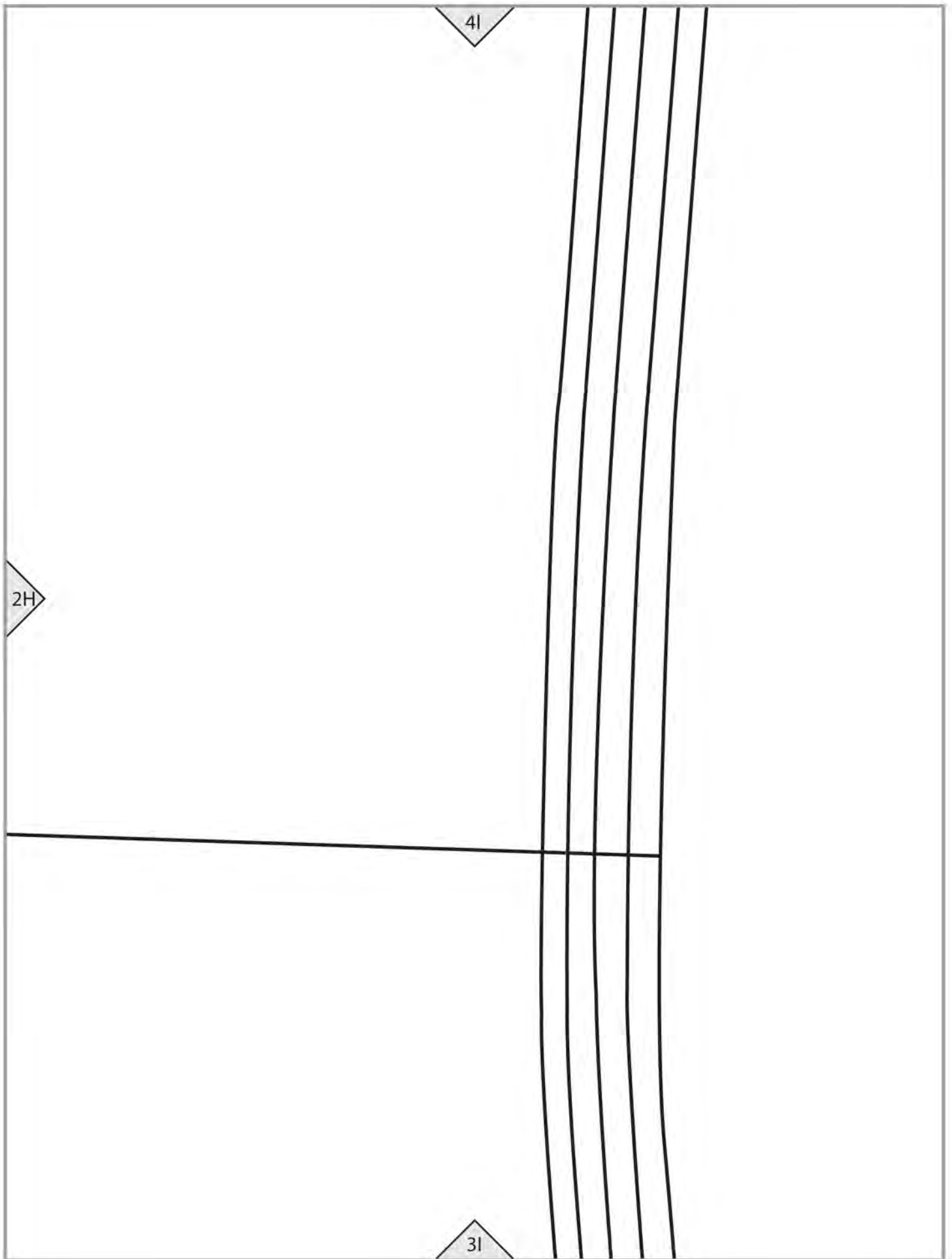
2H

2G

lengthen/shorten line

3

3H



2H

4I

3I

3A

E1 cutting line

2A

2A

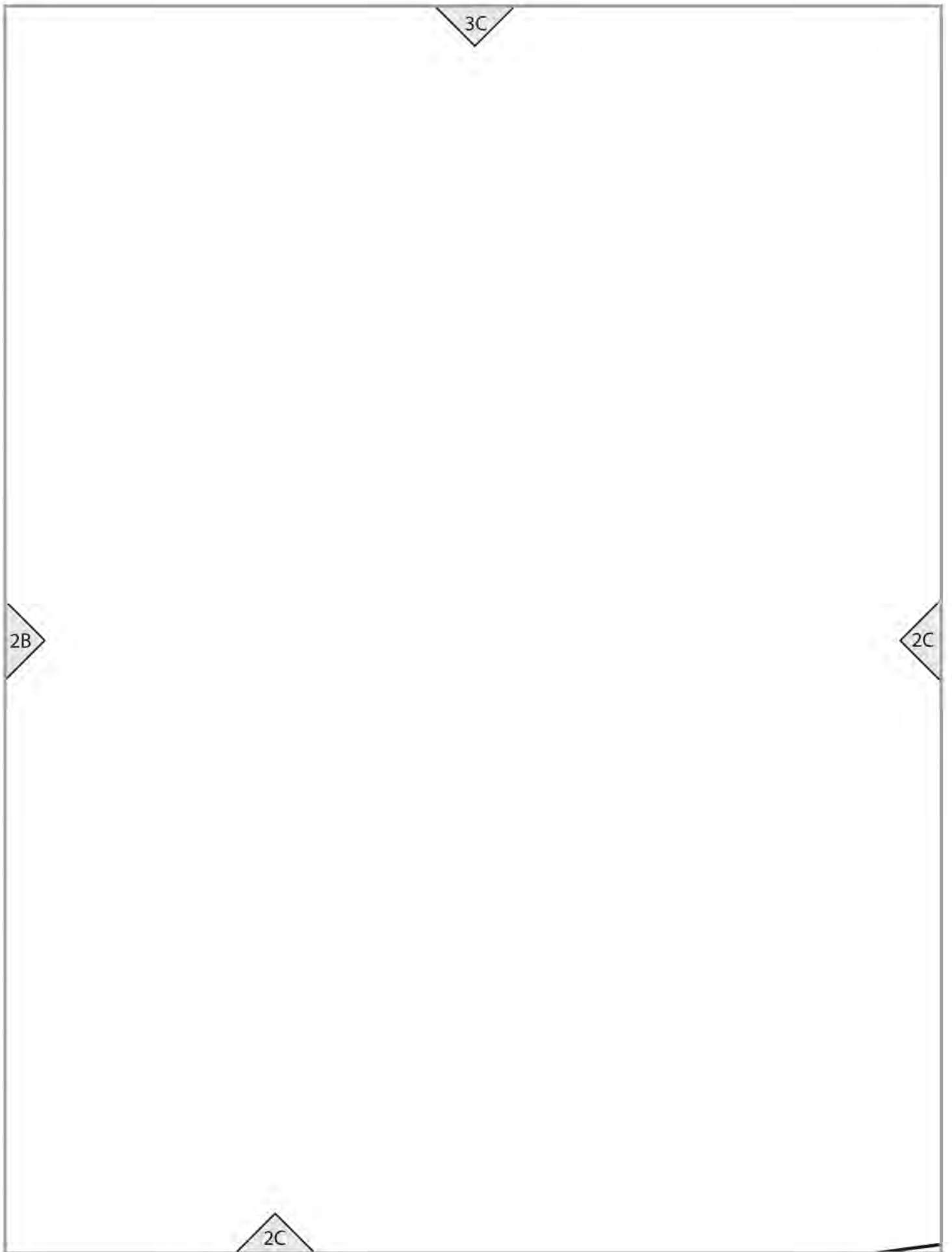
3B

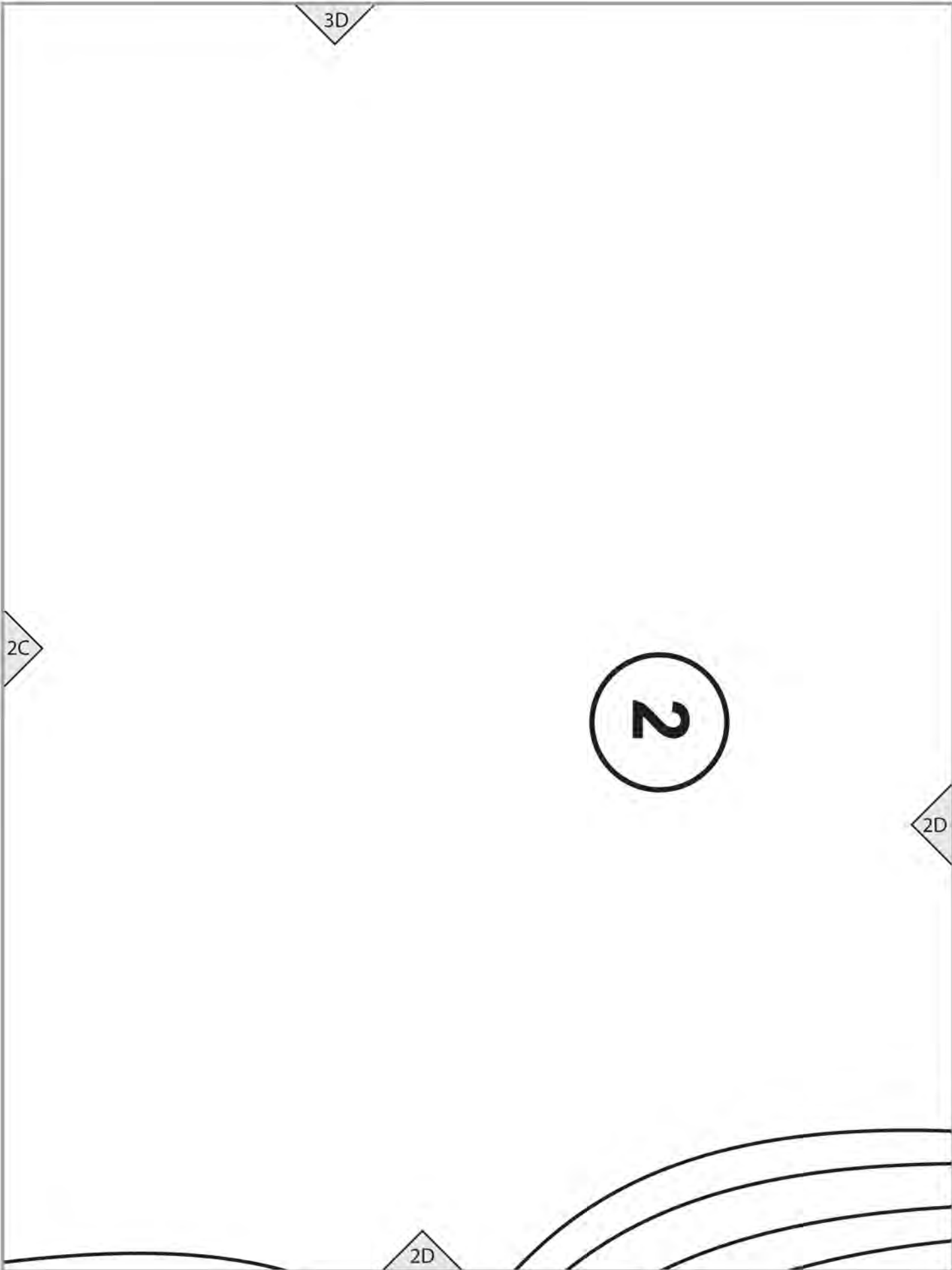
lengthen/shorten line

2A

2B

2B





COAT (E)

BACK

Cut 1 on FOLD

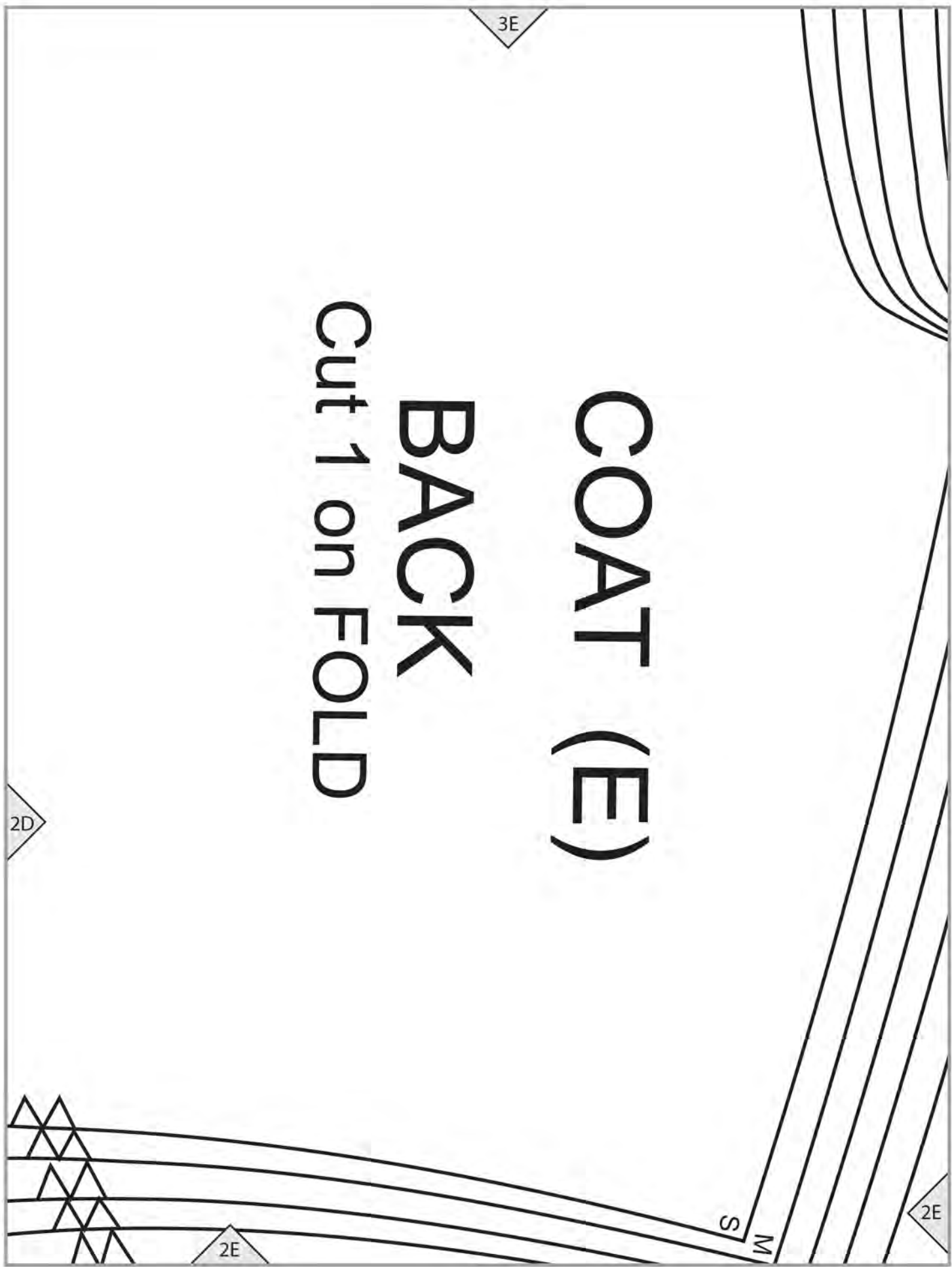
3E

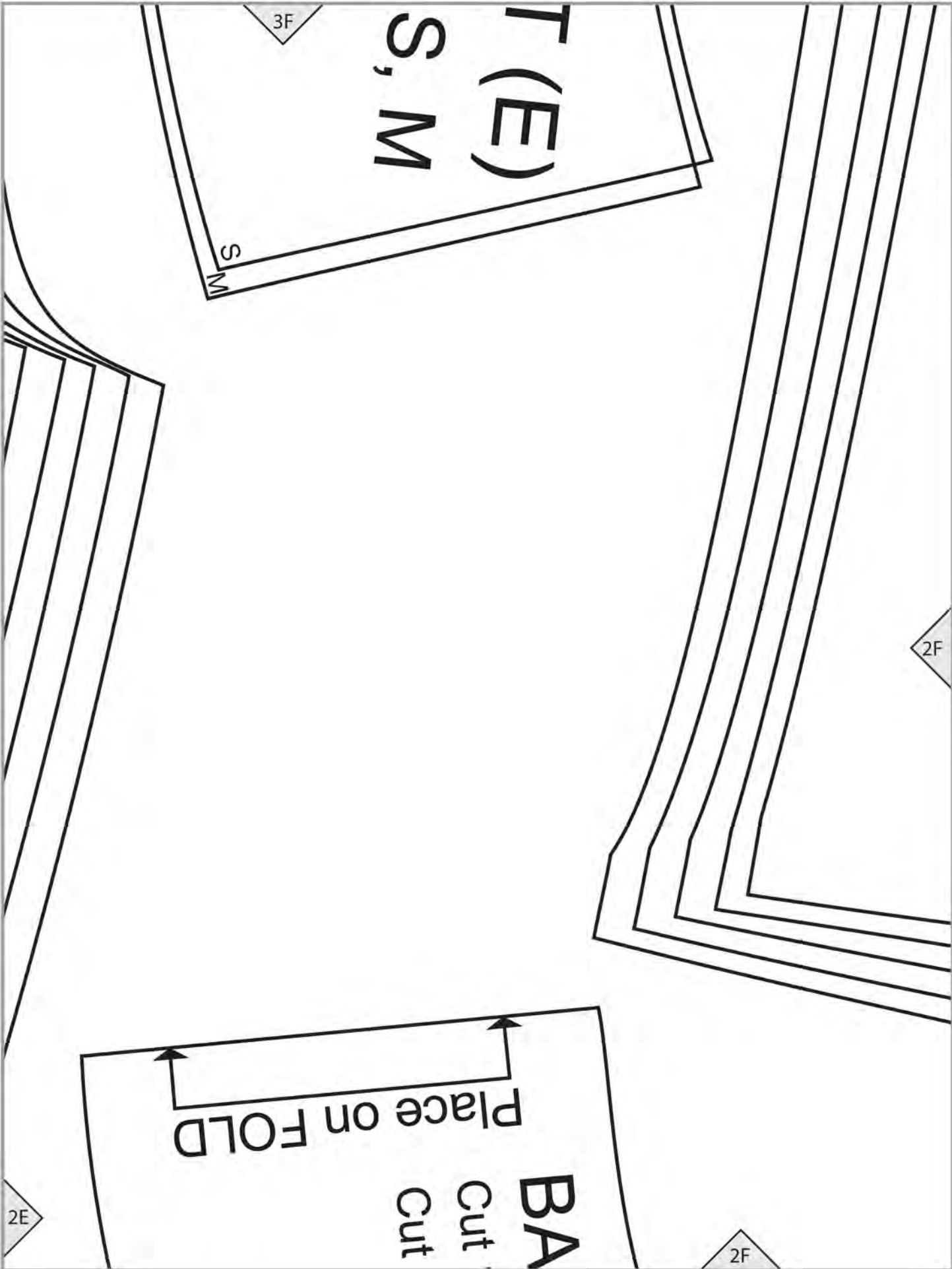
2D

2E

S
M

2E





3F

T (E)
S, M

S
M

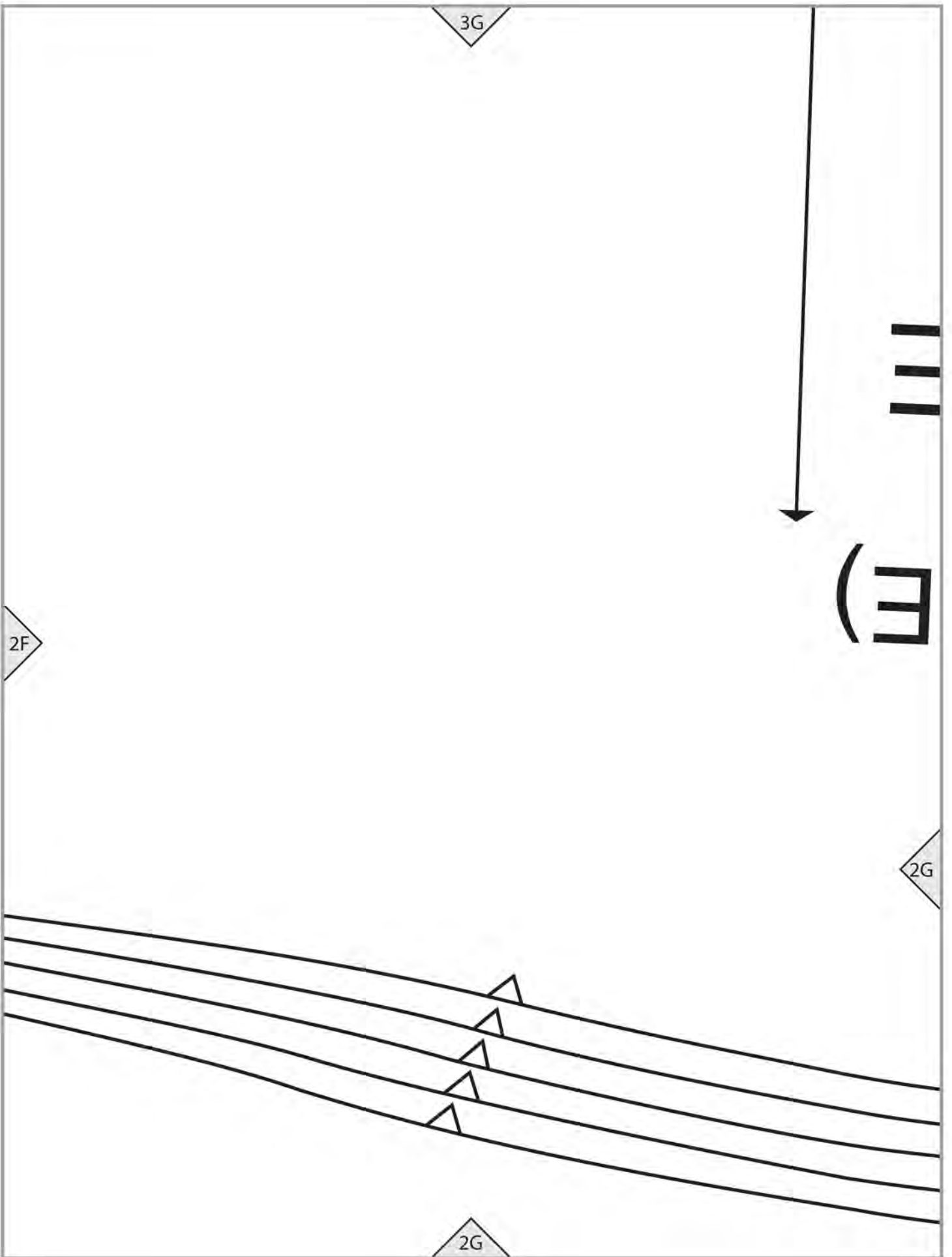
2F

Place on FOLD

BA
Cut
Cut

2E

2F



3H

Cut 2

SLEEVE

COAT (

2H

2G

SO

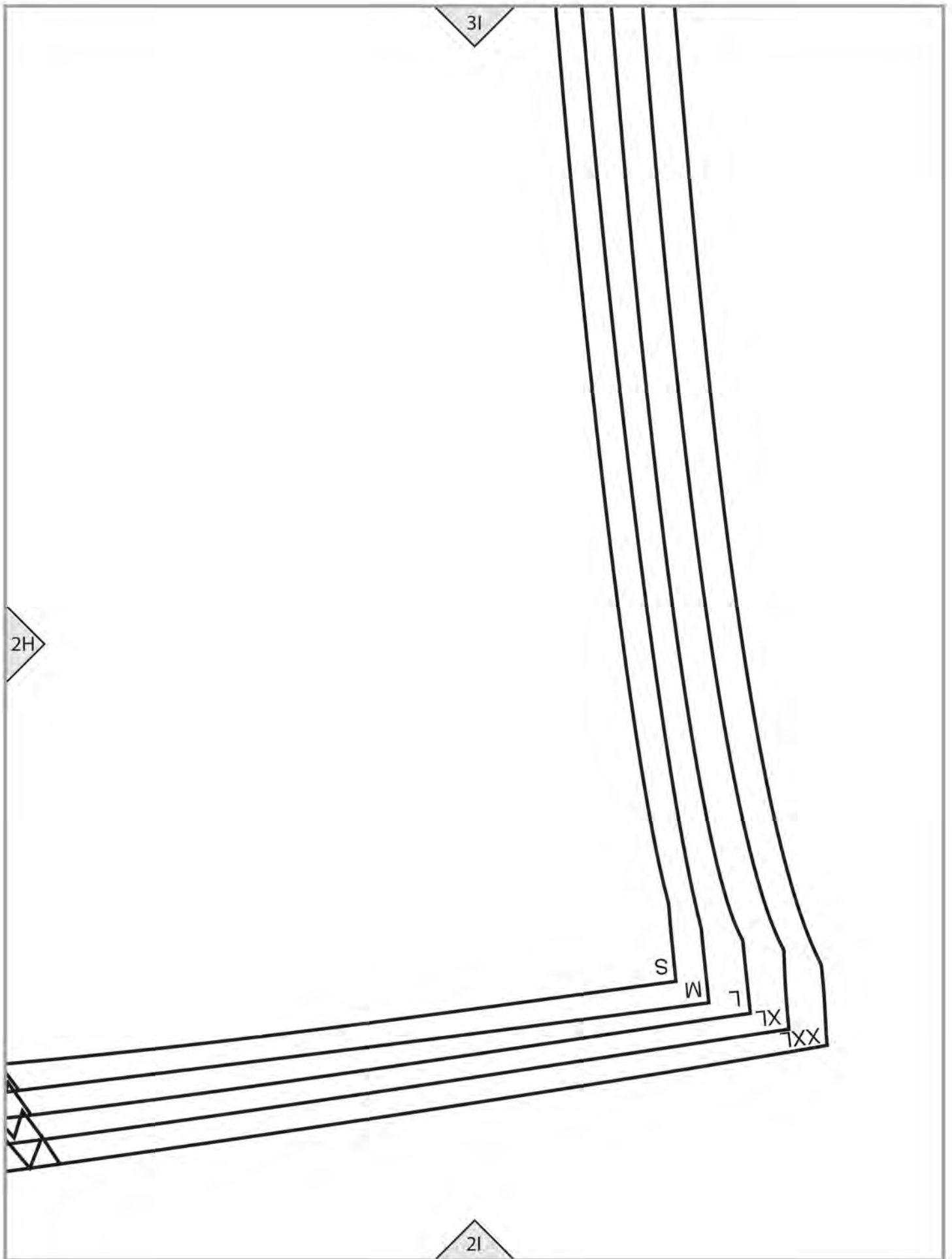
WO

LO

TXL

XXL

2H



2A

S

M

L

XL

XXL

1A

2B

1B

1A

COAT (E)

BACK FACING

5

Cut 1 on FOLD of fabric
Cut 1 on FOLD of interfacing

Size M, XL

Place on FOLD

XL

M

XL

M

XL

M

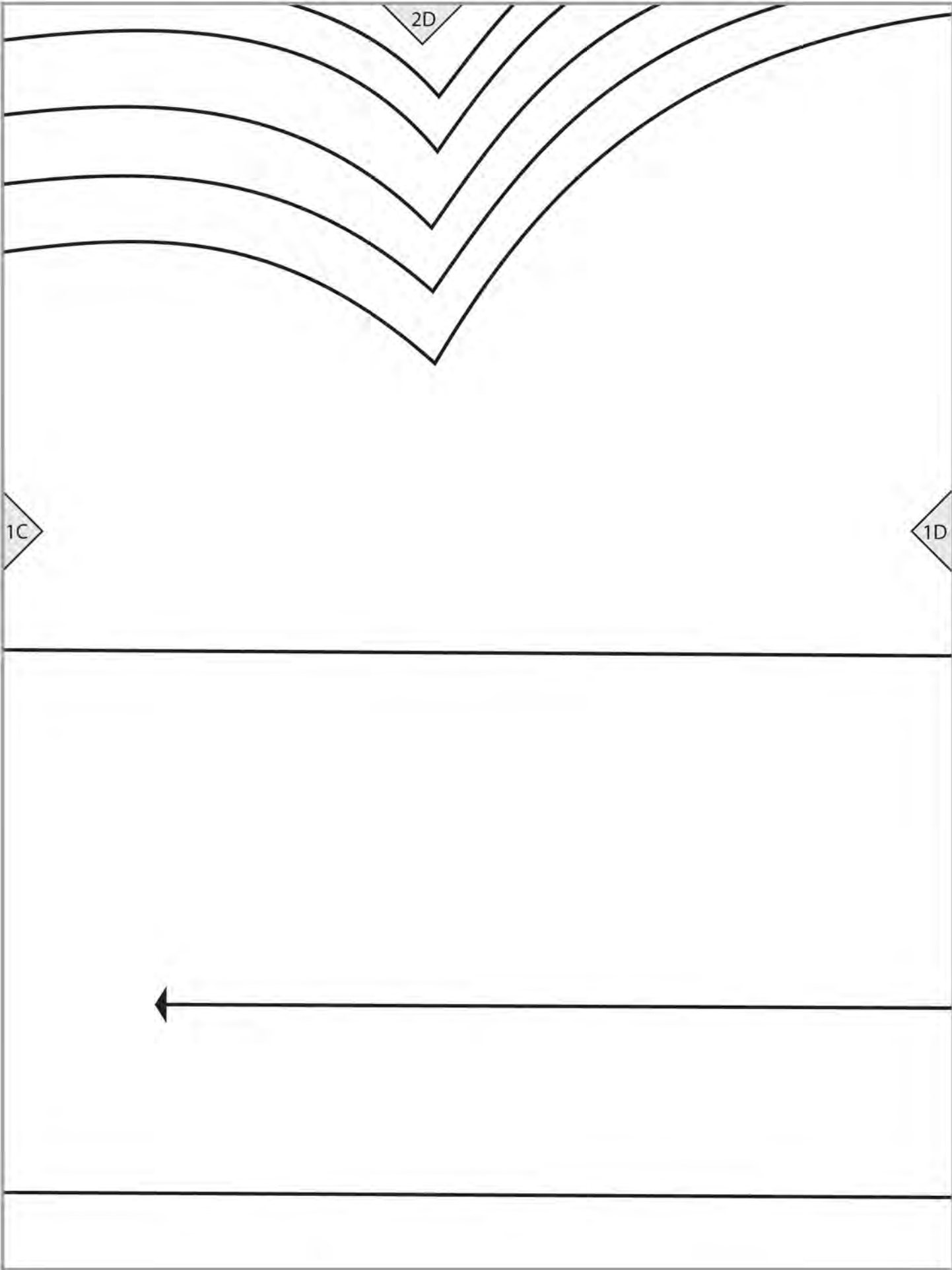
2C

1B

1C



E1 cutting line





2F

S

1F

COAT (E)

CK FACING

1 on FOLD of fabric
1 on FOLD of interfacing

Size S

5

1E

4



1G

2G

1F

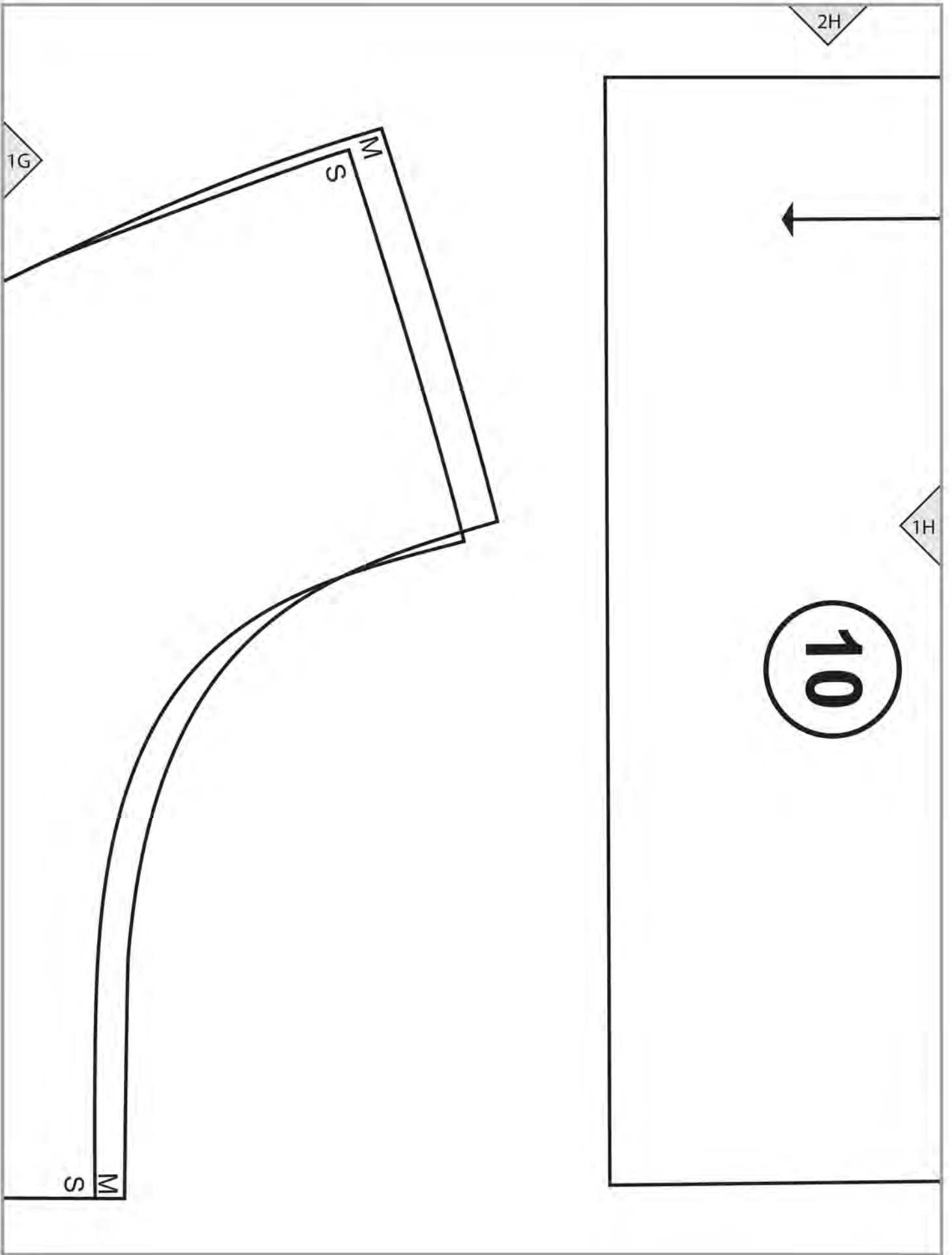
COAT (E)

FRONT FACING

Cut 2 of fabric

Cut 2 of interfacing

Size S, M



COAT (E)

E1 POCKET

Cut 4

GRAINLINE