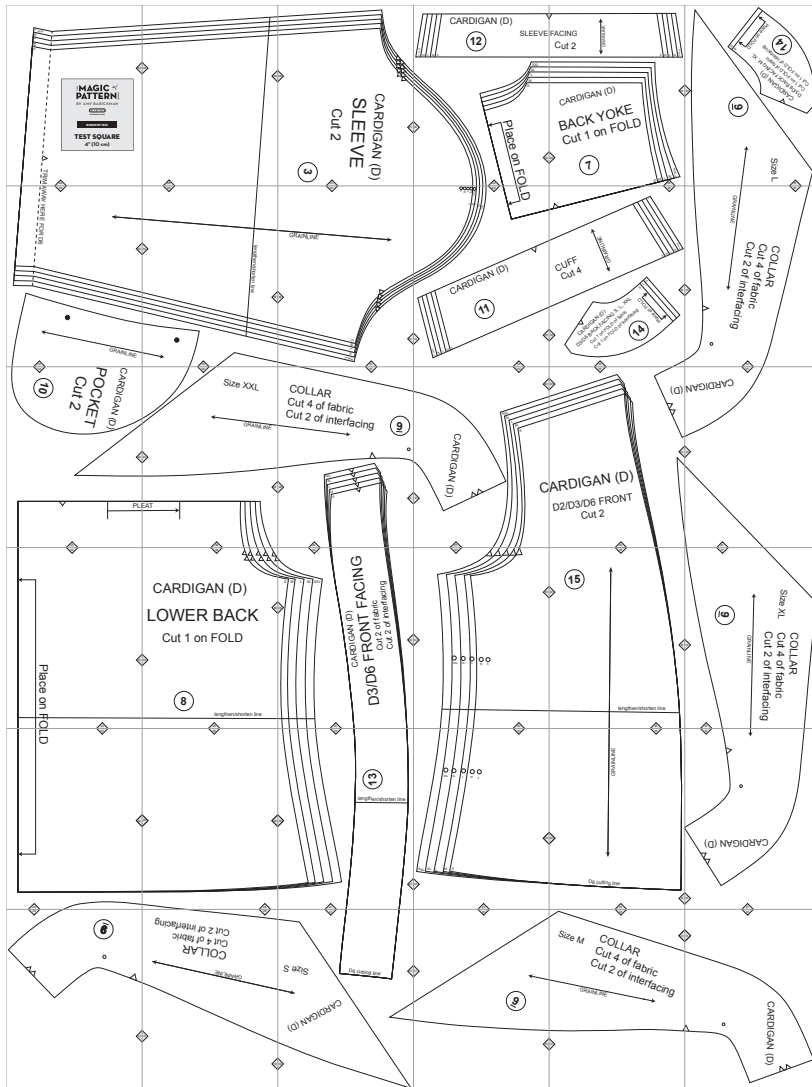


# D6. Dorothy



Copyright ©2014 by Amy Barickman


All rights reserved. Amy Barickman's patterns may be printed for personal use, but may not be otherwise reproduced—mechanically, electronically, or by any other means, including photocopying—without written permission of the publisher.

Sewing pattern designs for *The Magic Pattern Book* by Amy Barickman are intended for personal use only, and not as the basis for commercial manufacturing.

Workman Publishing, New York • [workman.com](http://workman.com)

L XX  
L XL  
L M  
S

6A

THE **MAGIC**  **PATTERN** BOOK  
BY AMY BARICKMAN

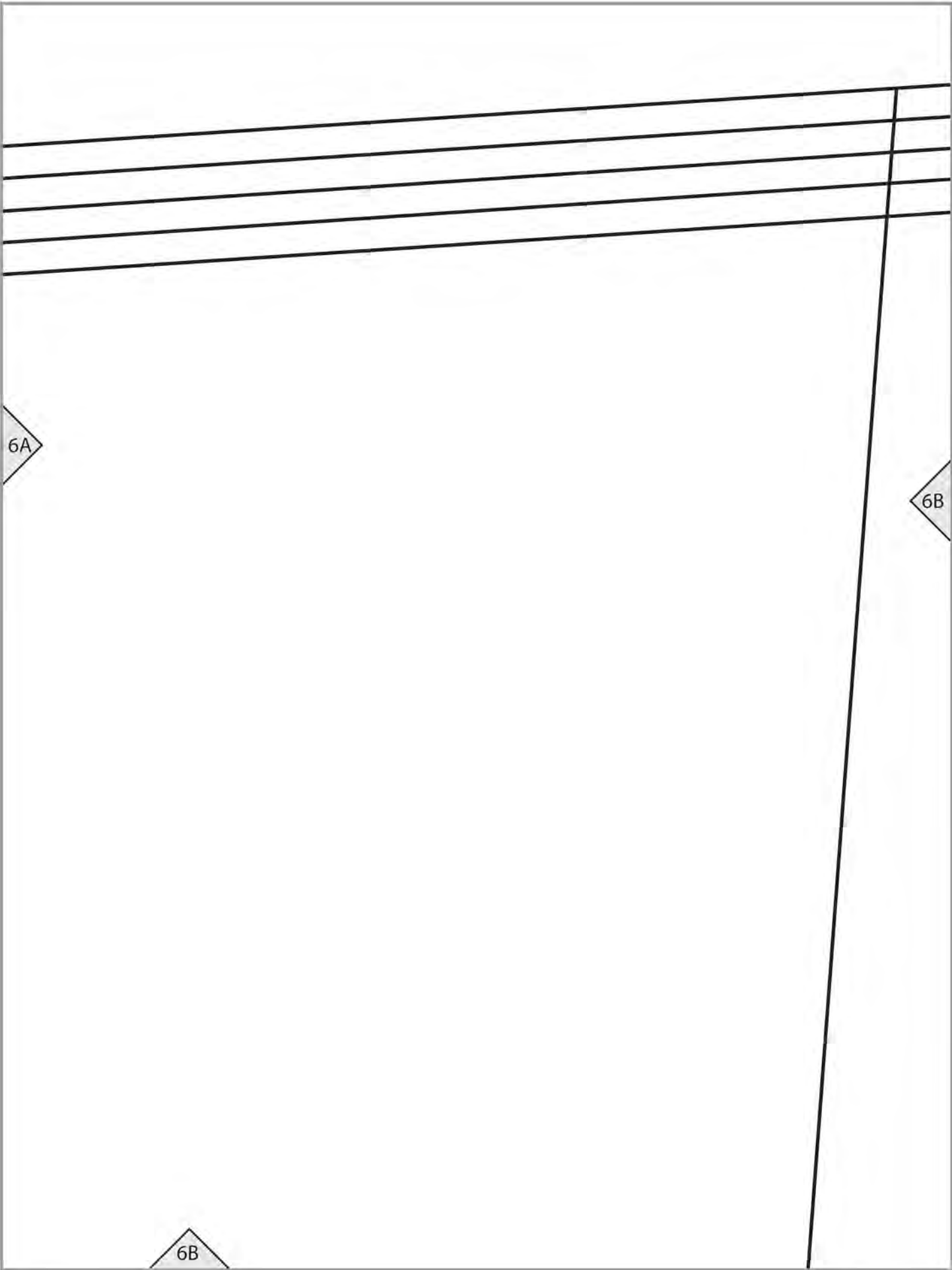
workman  
workman.com

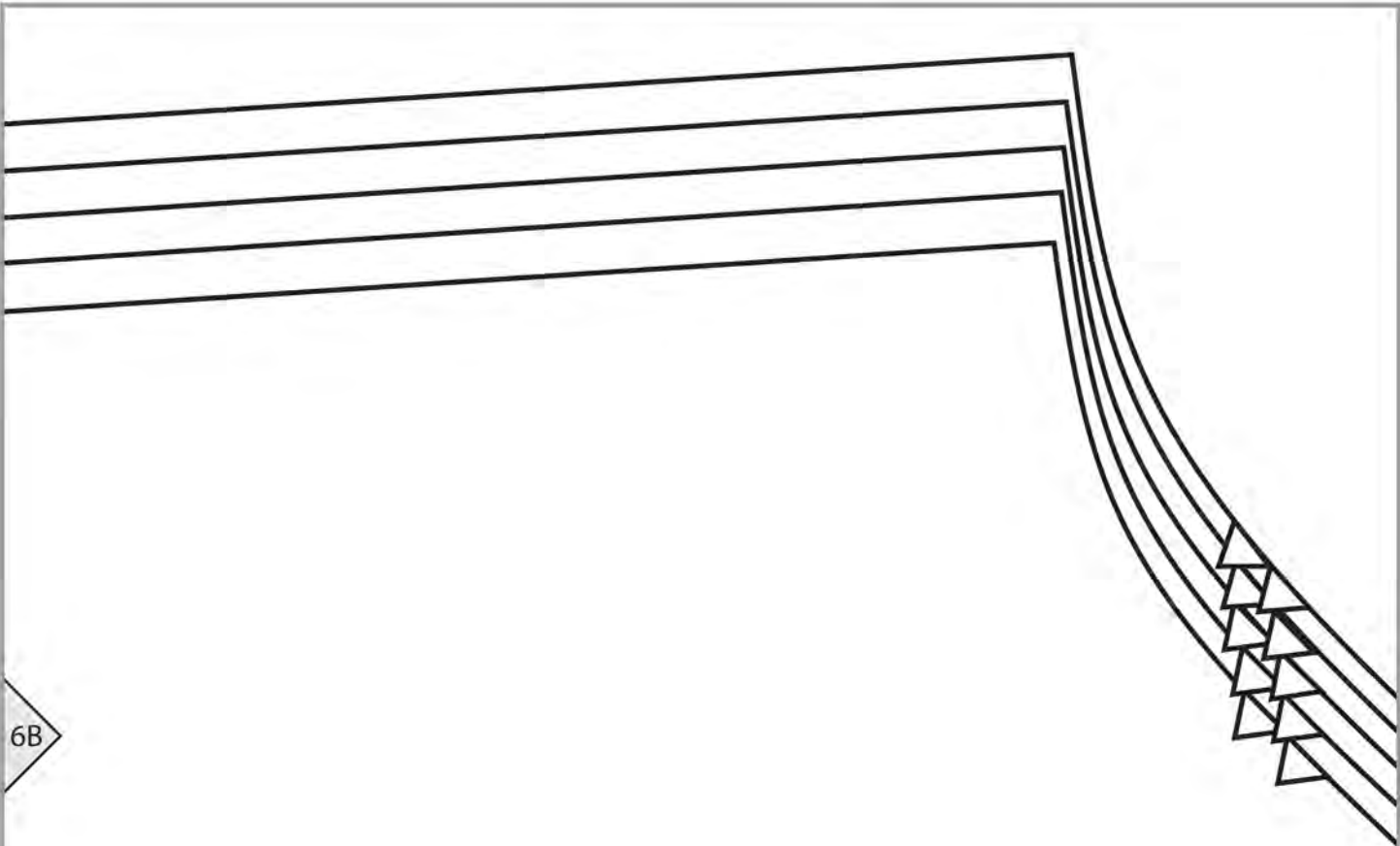
**DOROTHY (D6)**

**TEST SQUARE**  
4" (10 cm)

△ TRIM

6A





6B

6C

**CARDIGAN (D)**  
**SLEEVE**  
**Cut 2**

3

6C



# CARDIGAN (D)

SLEEVE

12

X  
XL  
L M S

XXL

XL

L

M

S

6C

Place on FO

6D

6D

FACING  
Cut 2



S M L XL XL

CARDIGAN (D)

BACK YOKE  
Cut 1 on FOLD

6D

7

6E

S M L XL XL

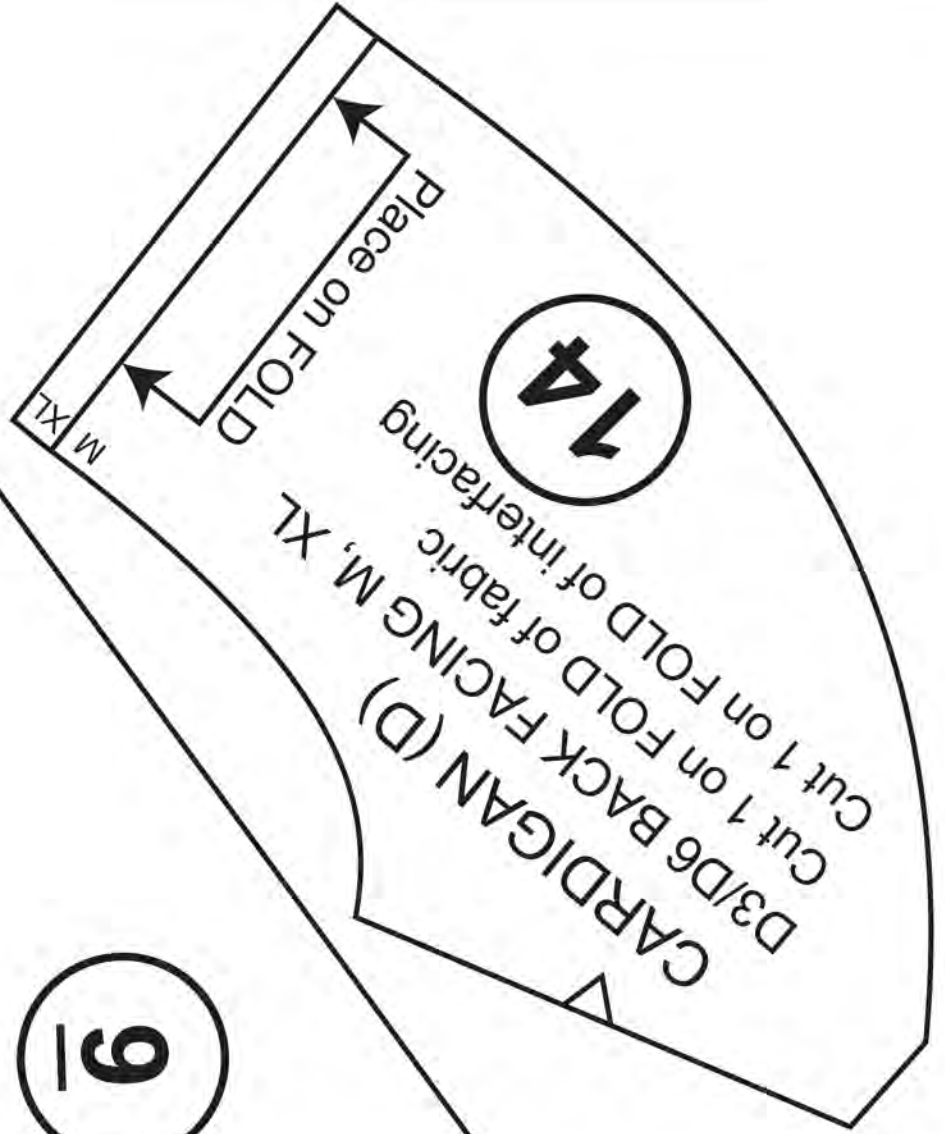
6E

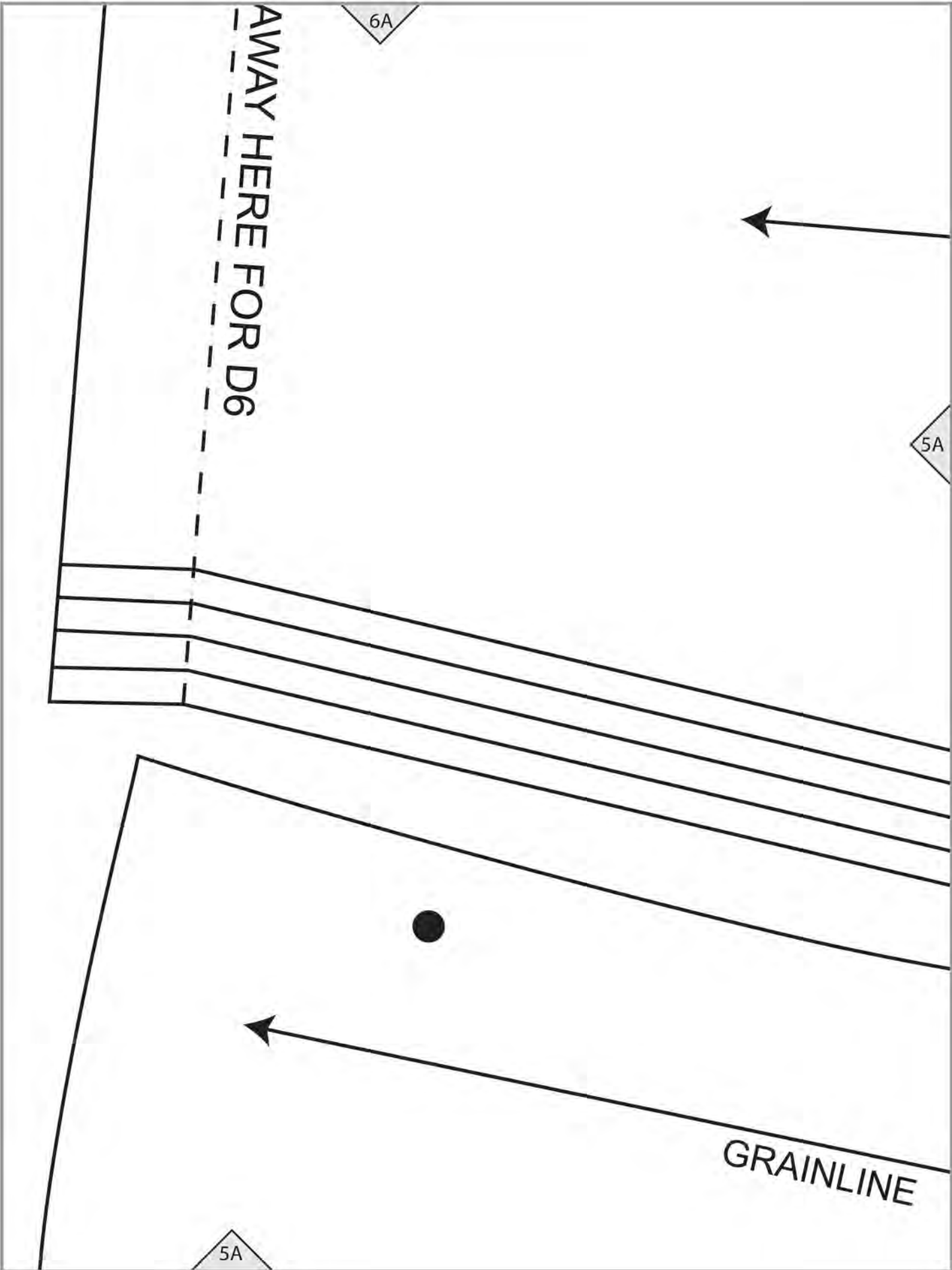
6E

9

Size L

6F





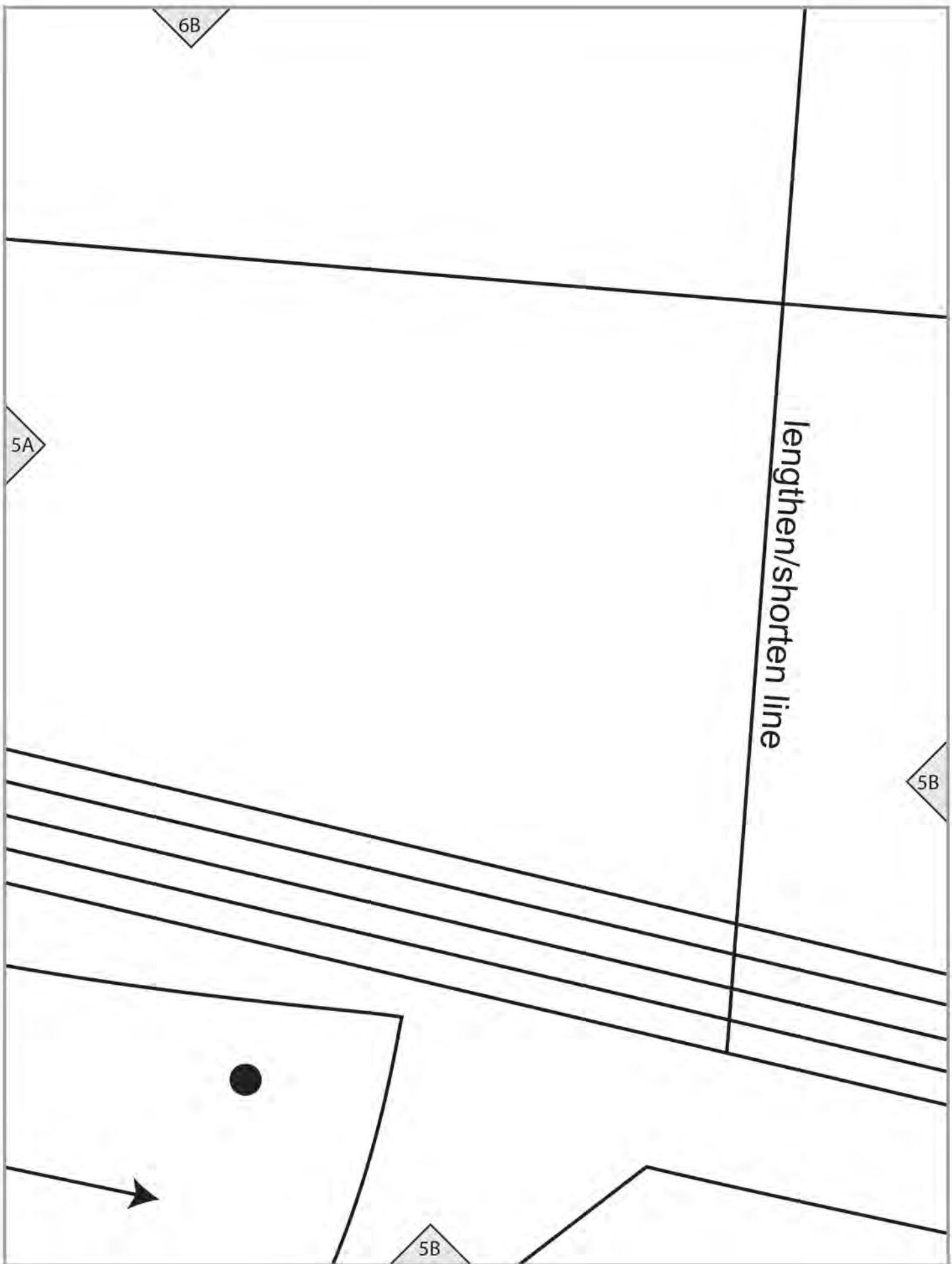
AWAY HERE FOR D6

6A

5A

5A

GRAINLINE



6C

GRAINLINE

5B

S

M

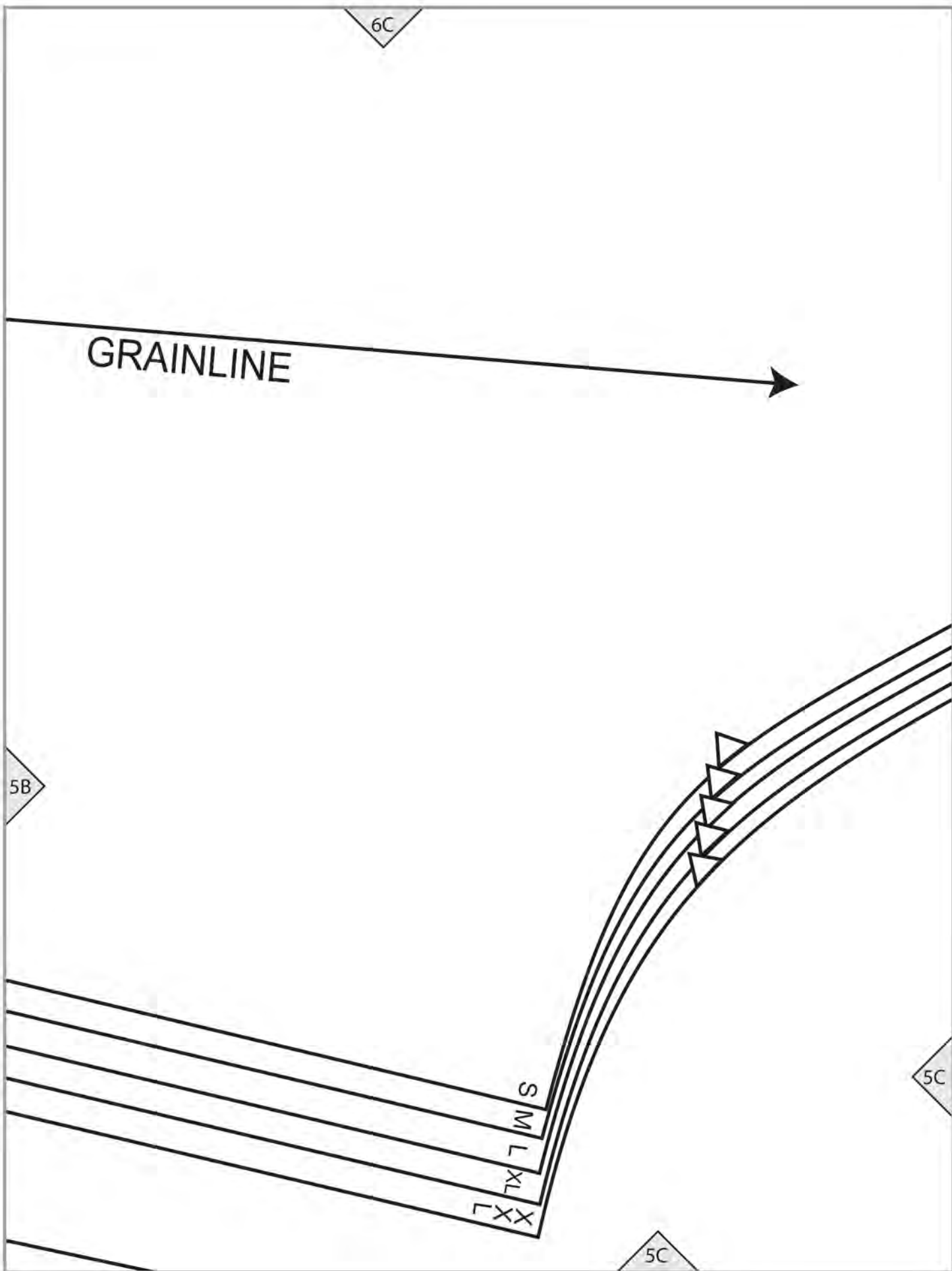
L

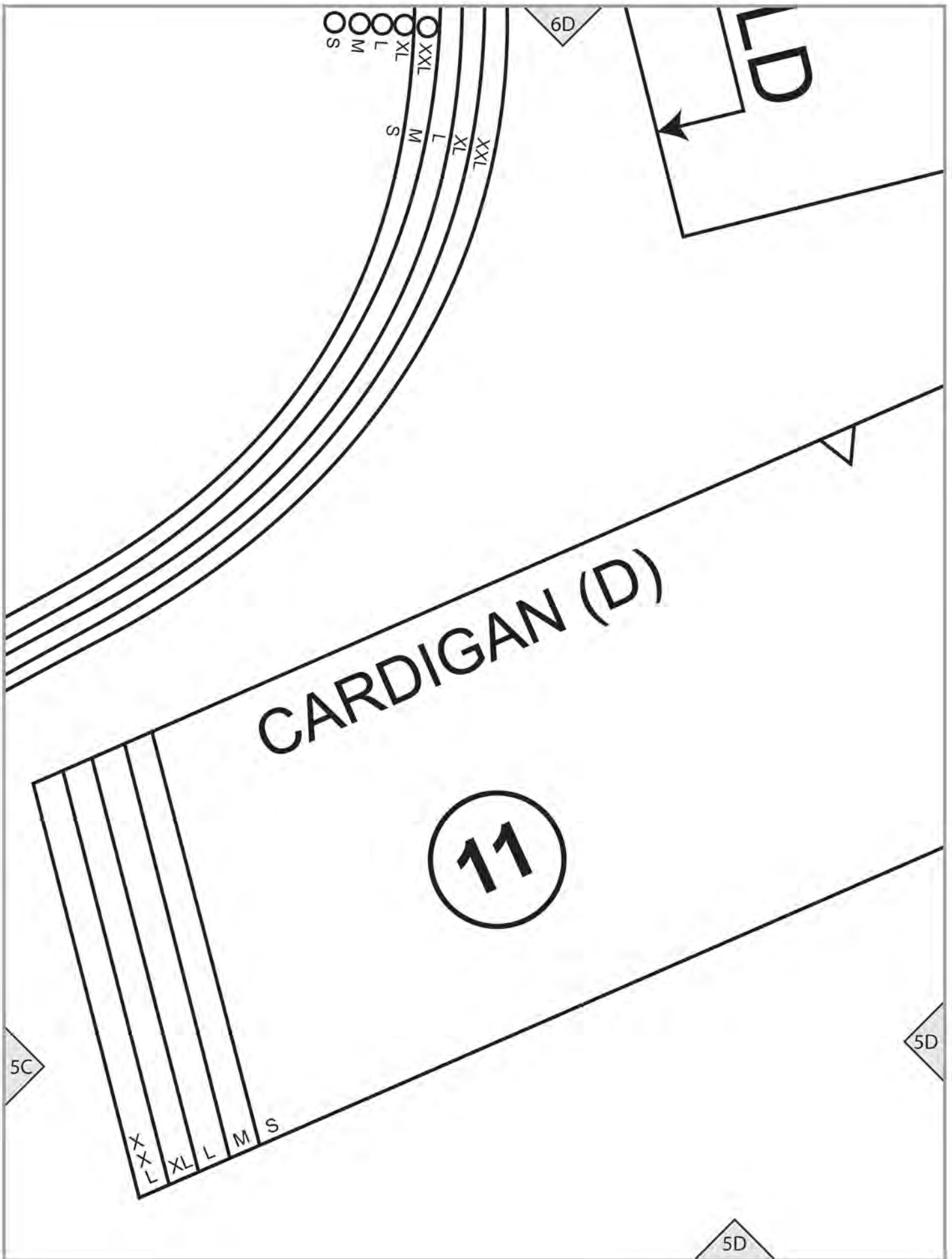
X

X

5C

5C





6E

**CUFF**  
Cut 4

GRAINLINE

S M L XL XXL

5E

**CARDIGAN (D)**  
**D3/D6 BACK FACING S, L, XXL**  
Cut 1 on FOLD of fabric  
Cut 1 on FOLD of interfacing

Place on FOLD

S L XXL

14

5D

5E



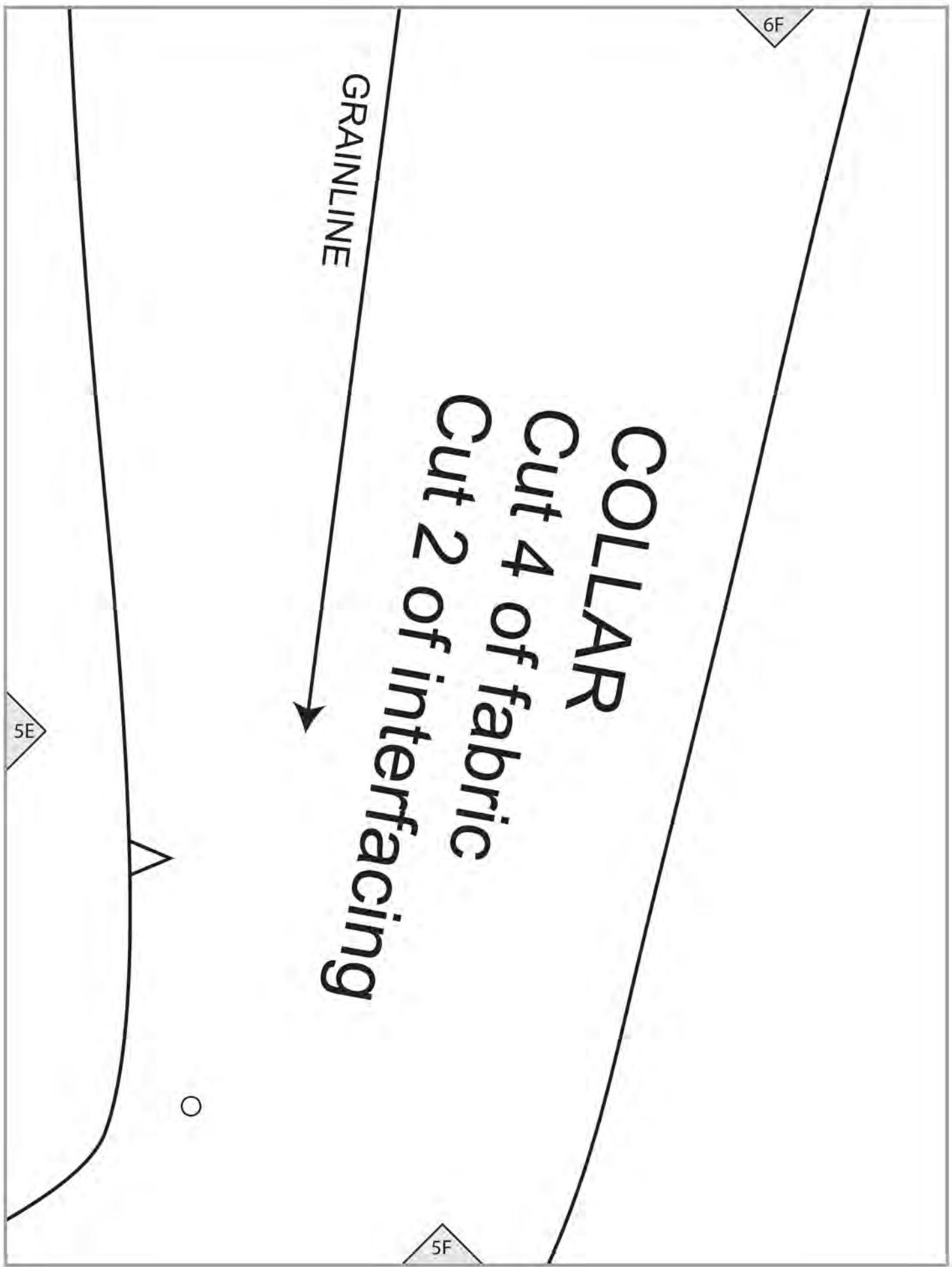
6F

GRAINLINE

**COLLAR**  
**Cut 4 of fabric**  
**Cut 2 of interfacing**

5E

5F



CARDIGAN (D)

POCKET

Cut 2

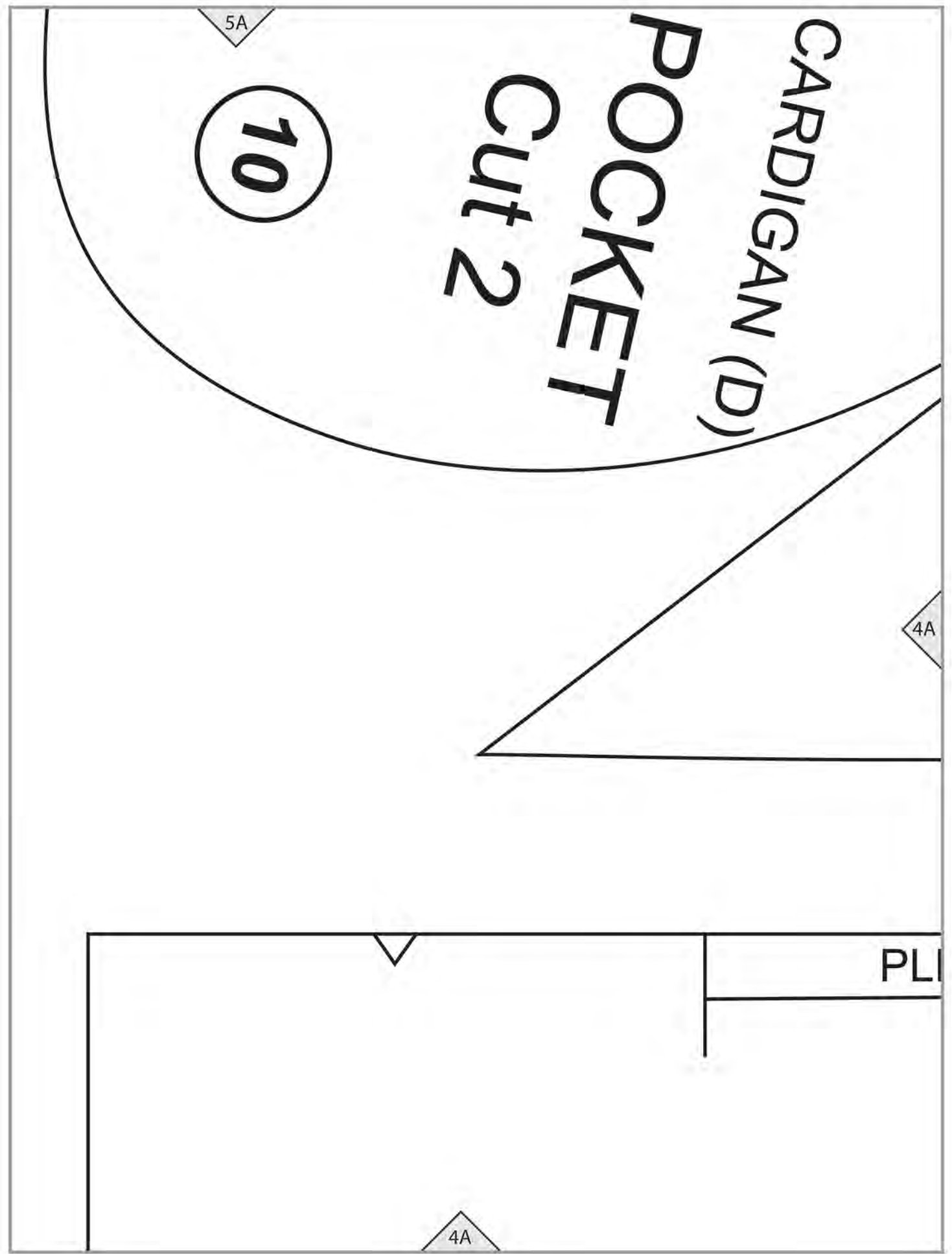
10

5A

4A

PLI

4A



Size XXL

GRAINLINE



5B

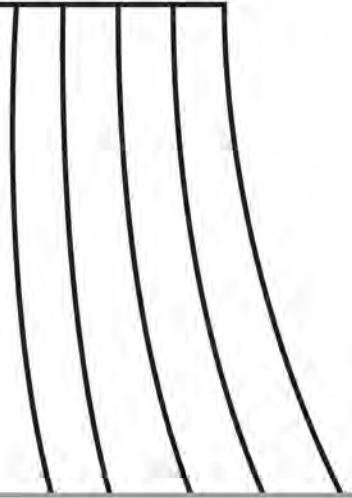
4A

4B

EAT



4B



5C

**COLLAR**  
Cut 4 of fabric  
Cut 2 of interfacing

**9**

4B

XXL

XL

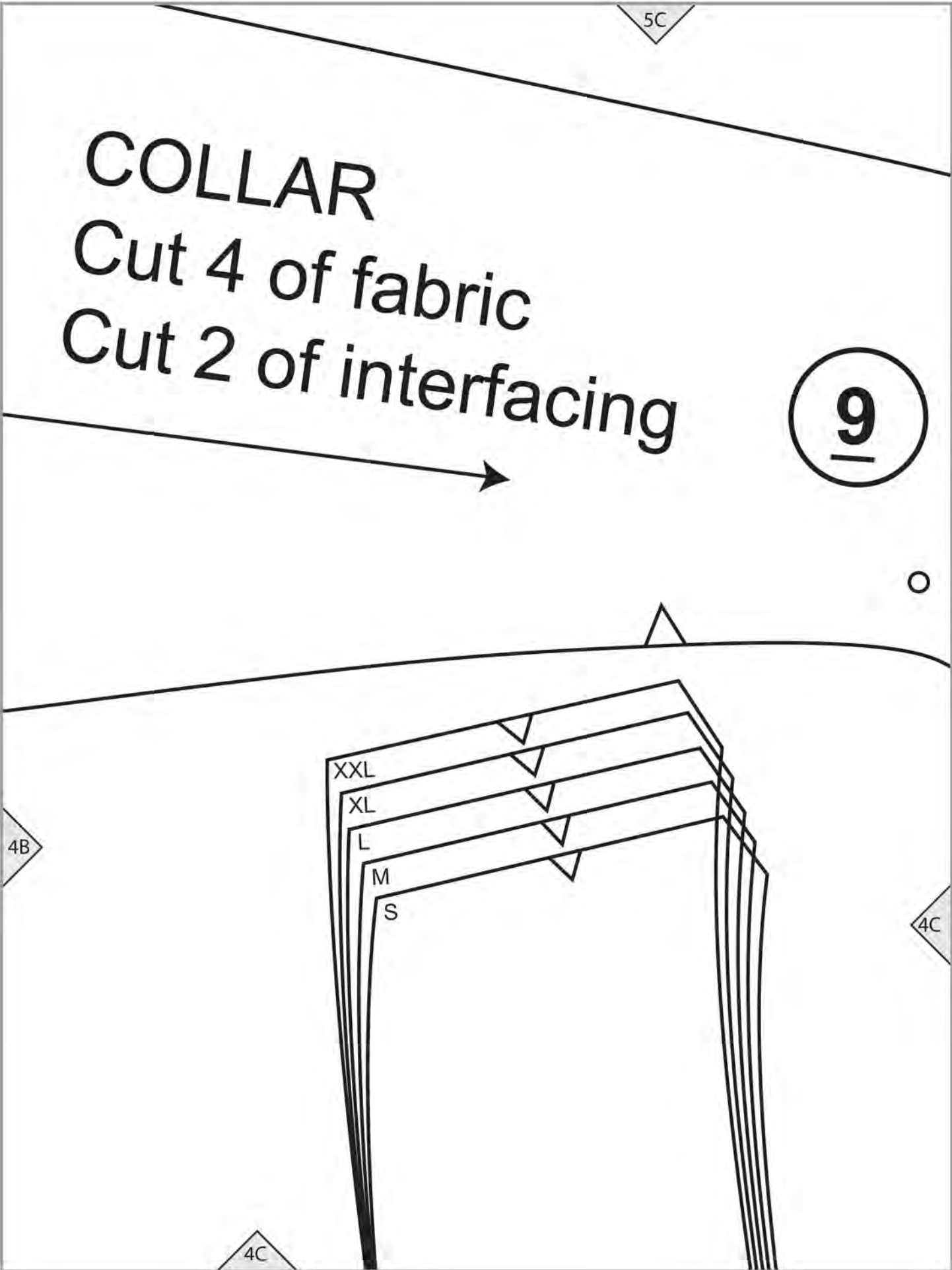
L

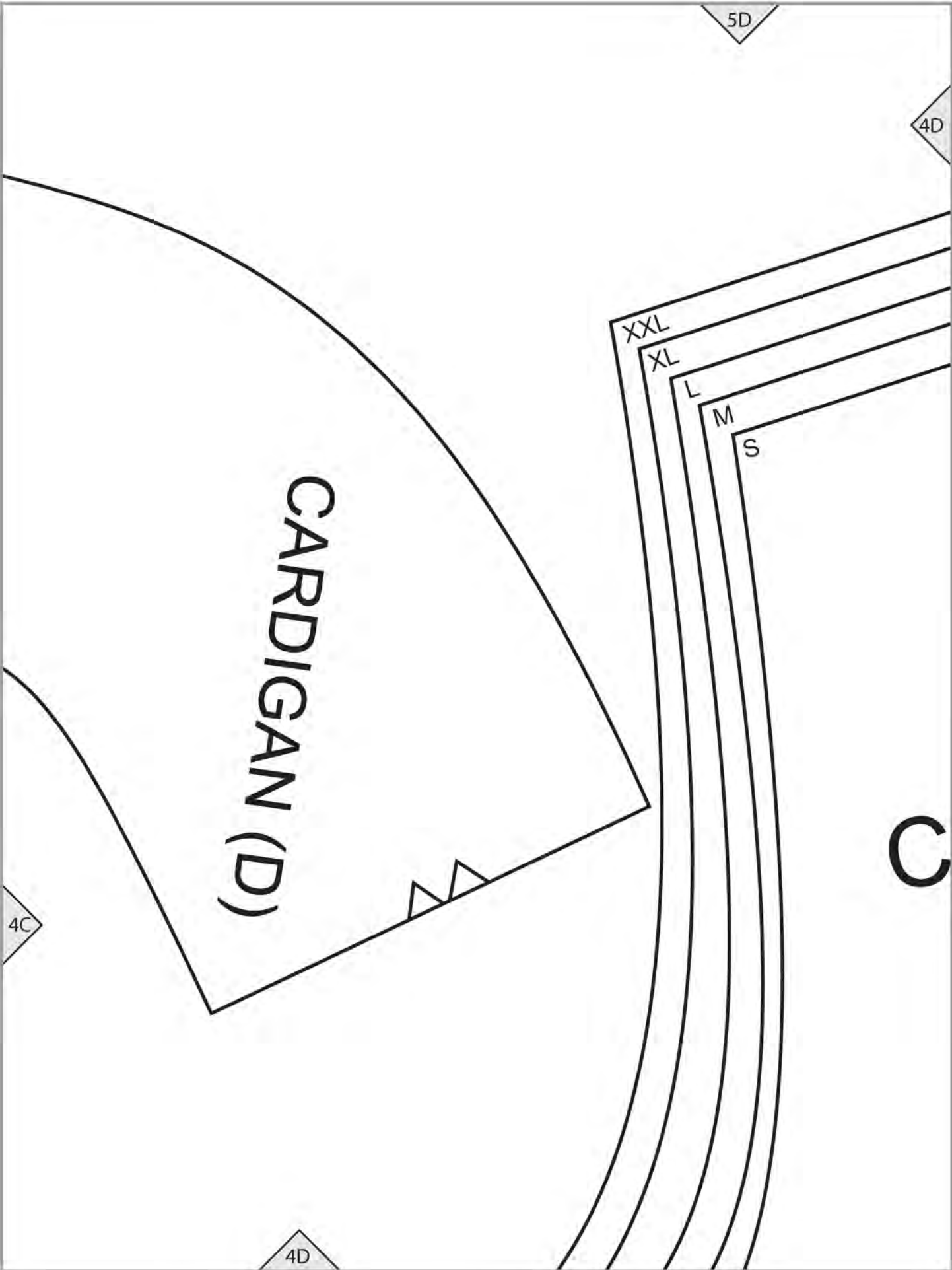
M

S

4C

4C





CARDIGAN (D)

XXL

XL

L

M

S

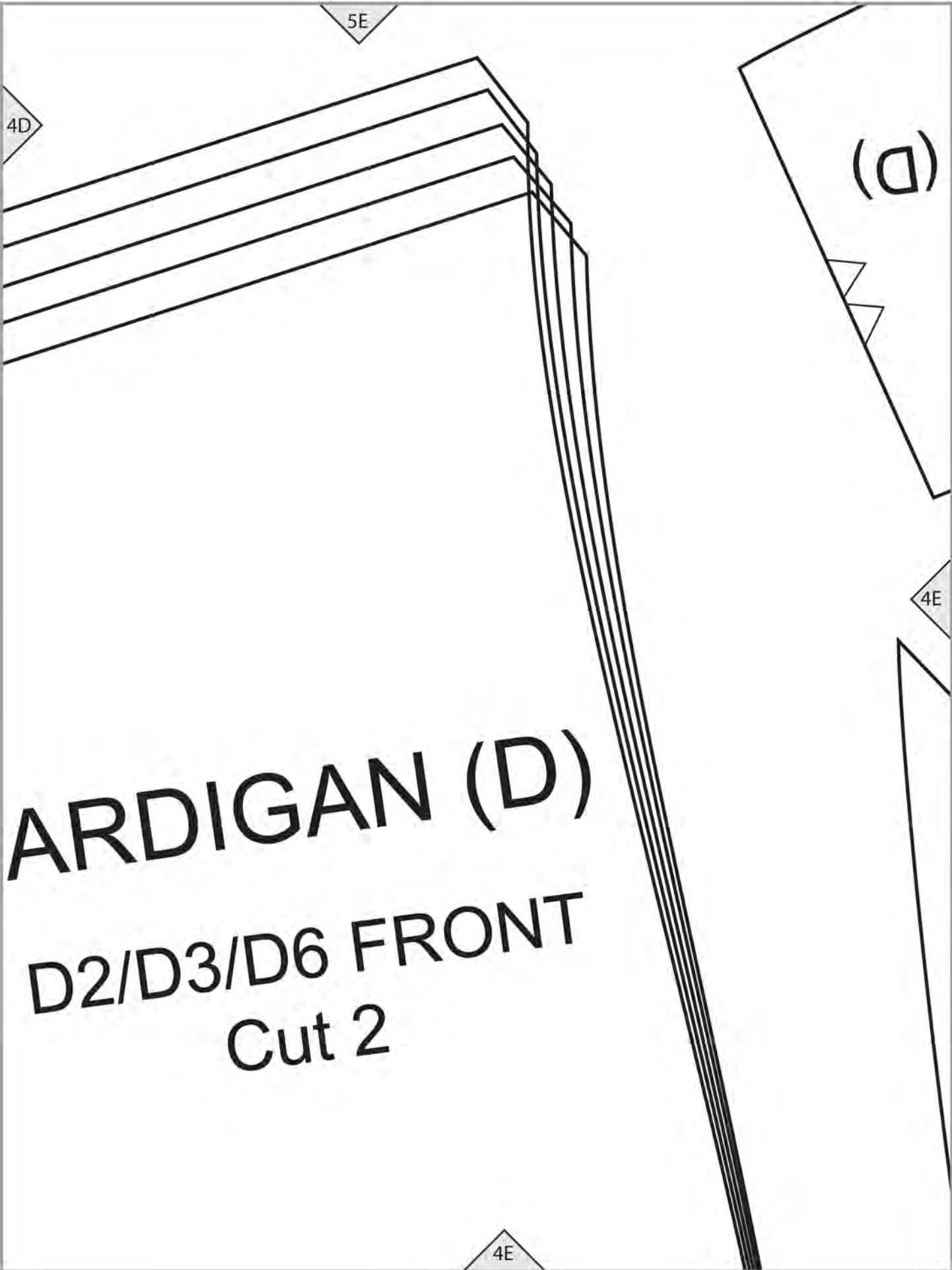
5D

4D

4C

4D

C



**ARDIGAN (D)**

**D2/D3/D6 FRONT**

**Cut 2**

CARDIGAN

5F

4E

4F

4A

3A

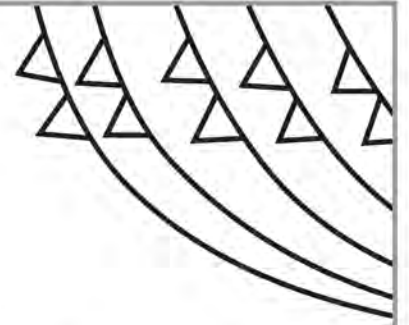
Place on FO

3A





4B



# CARDIGAN (D)

# LOWER BACK

Cut 1 on FOLD

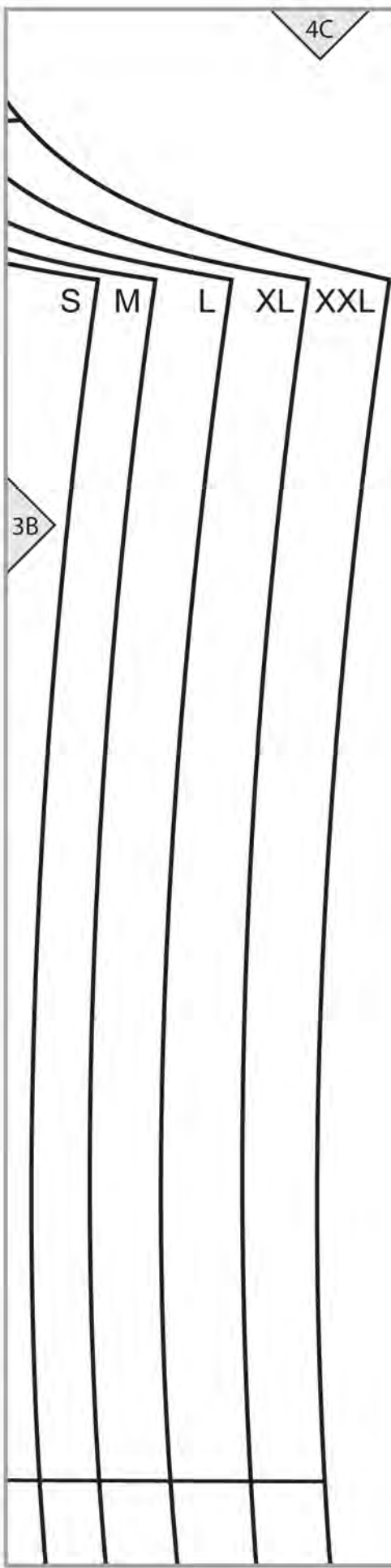
3B

3A



lengthen/shorten line

3B

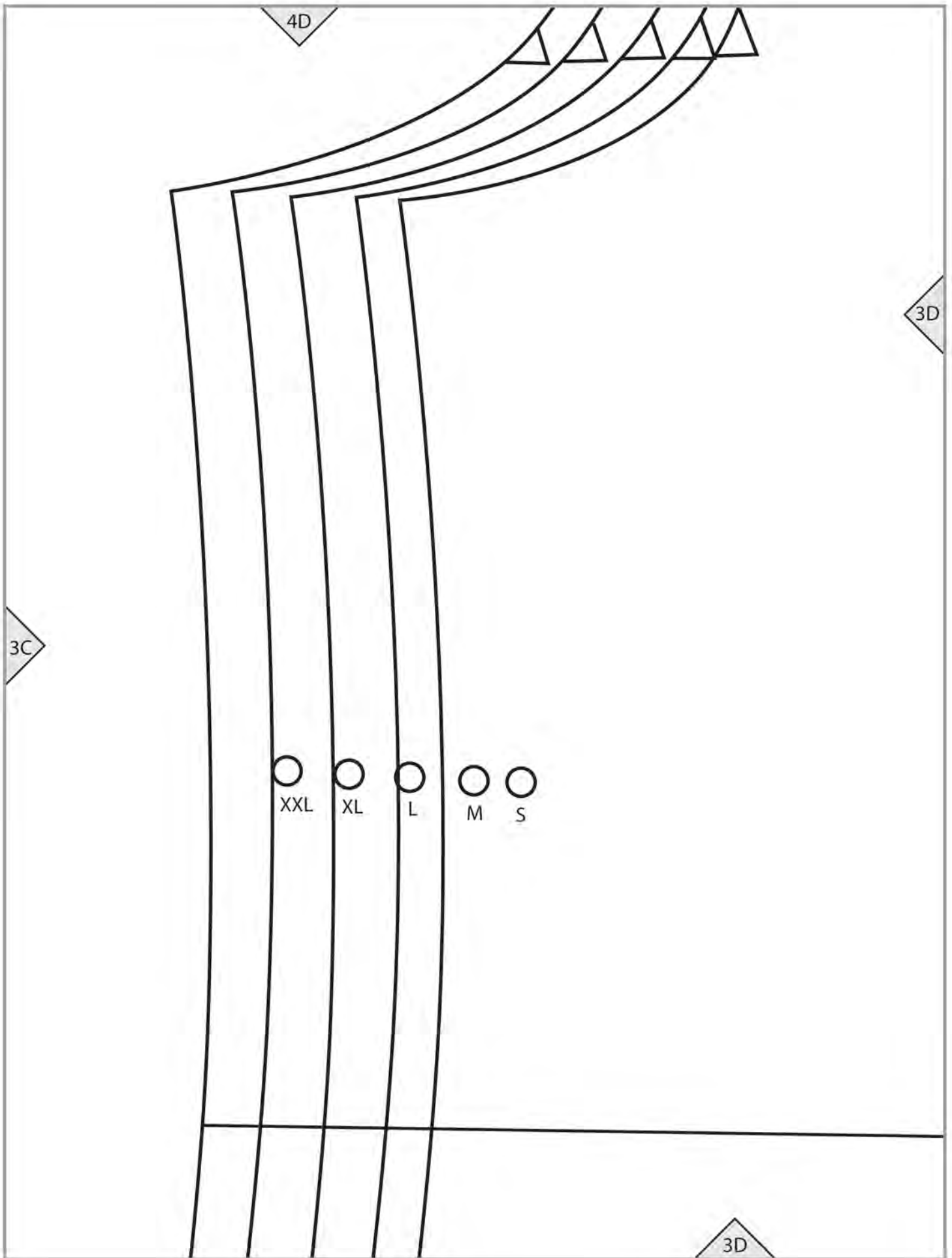


CARDIGAN (D)

# D3/D6 FRONT FACING

Cut 2 of fabric  
Cut 2 of interfacing

3C



15

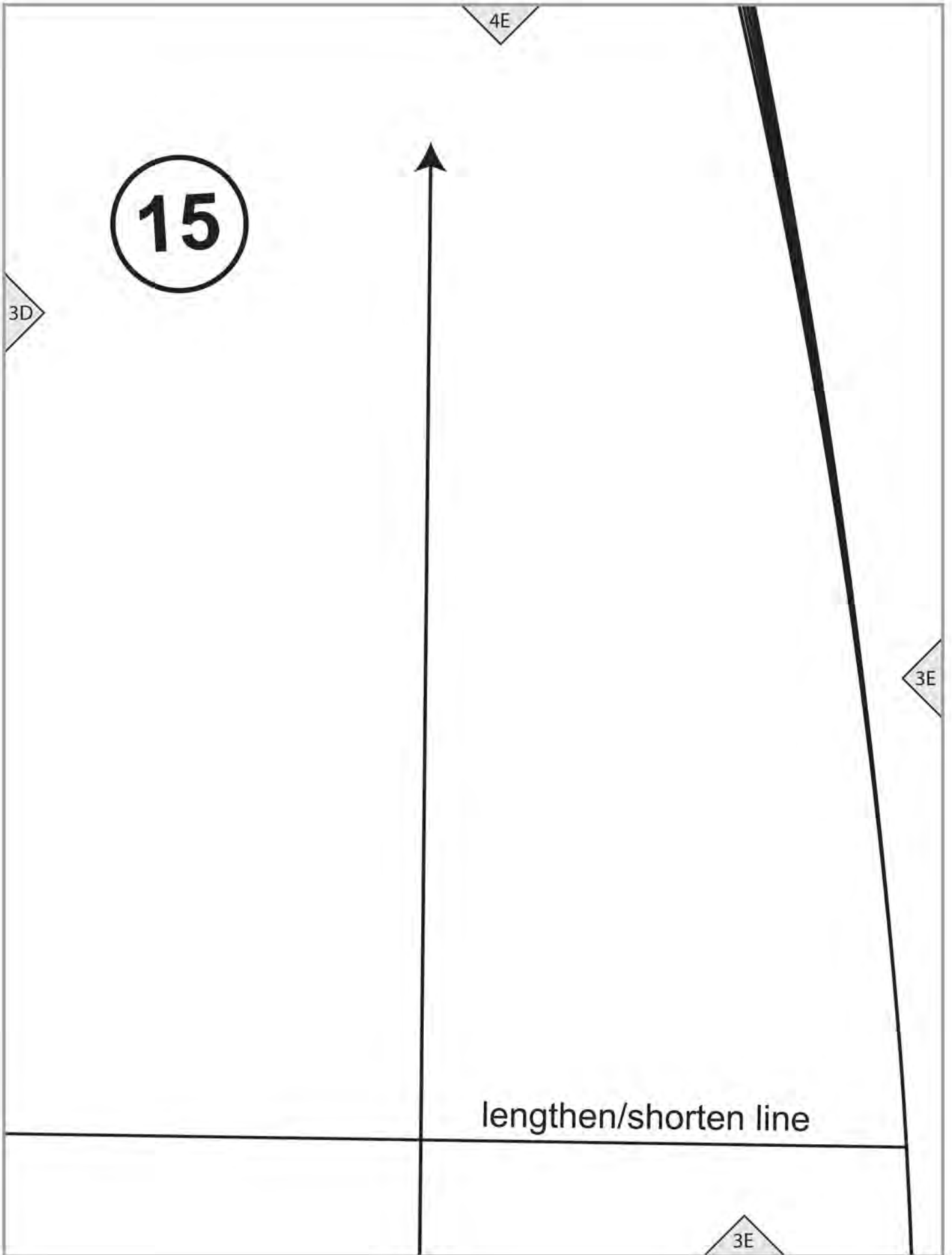
4E

3D

3E

lengthen/shorten line

3E



**COLLAR**  
Size XL  
Cut 4 of fabric  
Cut 2 of interfacing

GRAINLINE

**9**

4F

3E

3F

LD

3A

2A

2A



3B

2A

2B

2B



3C

13

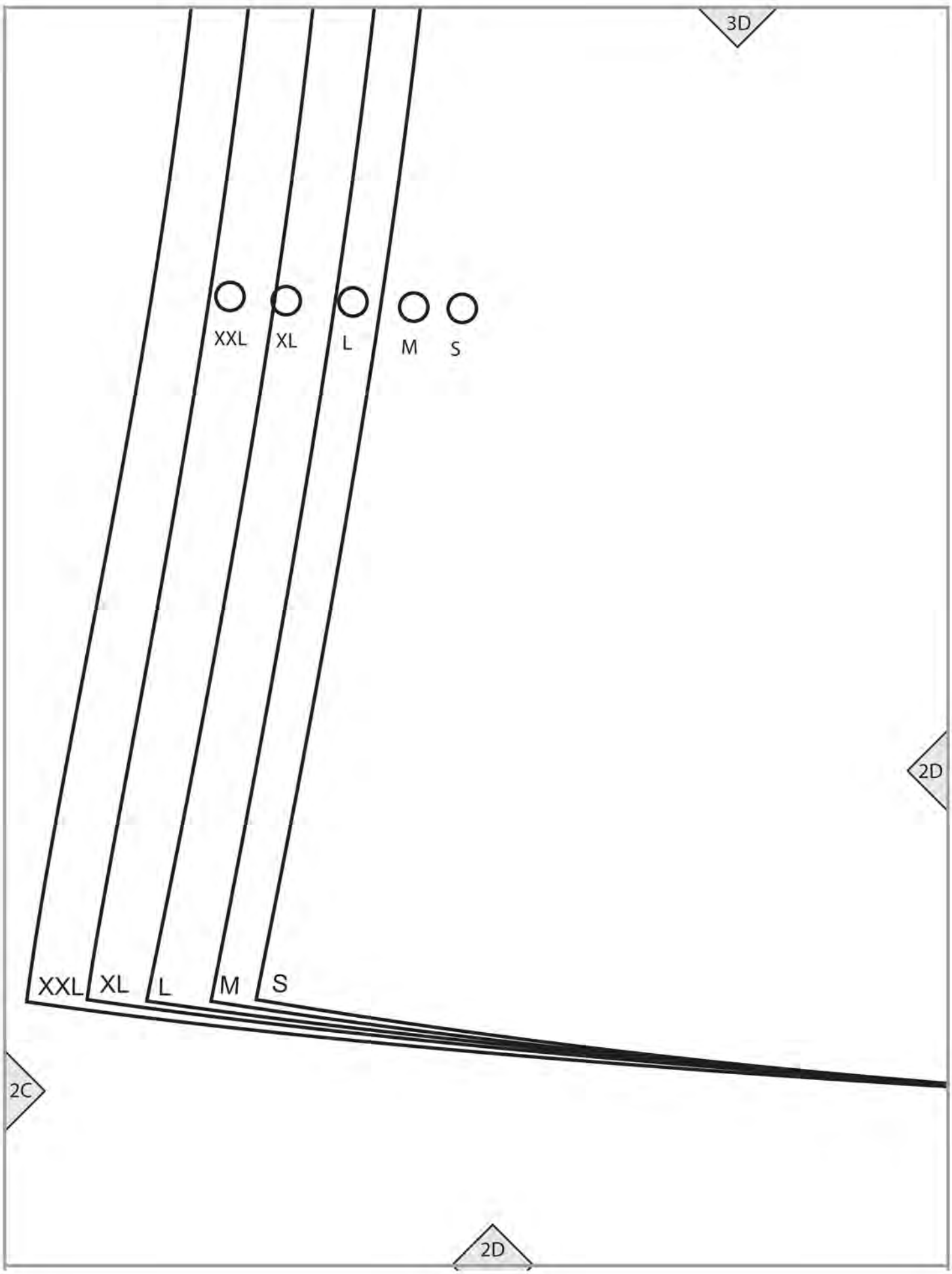
lengthen/shorten line

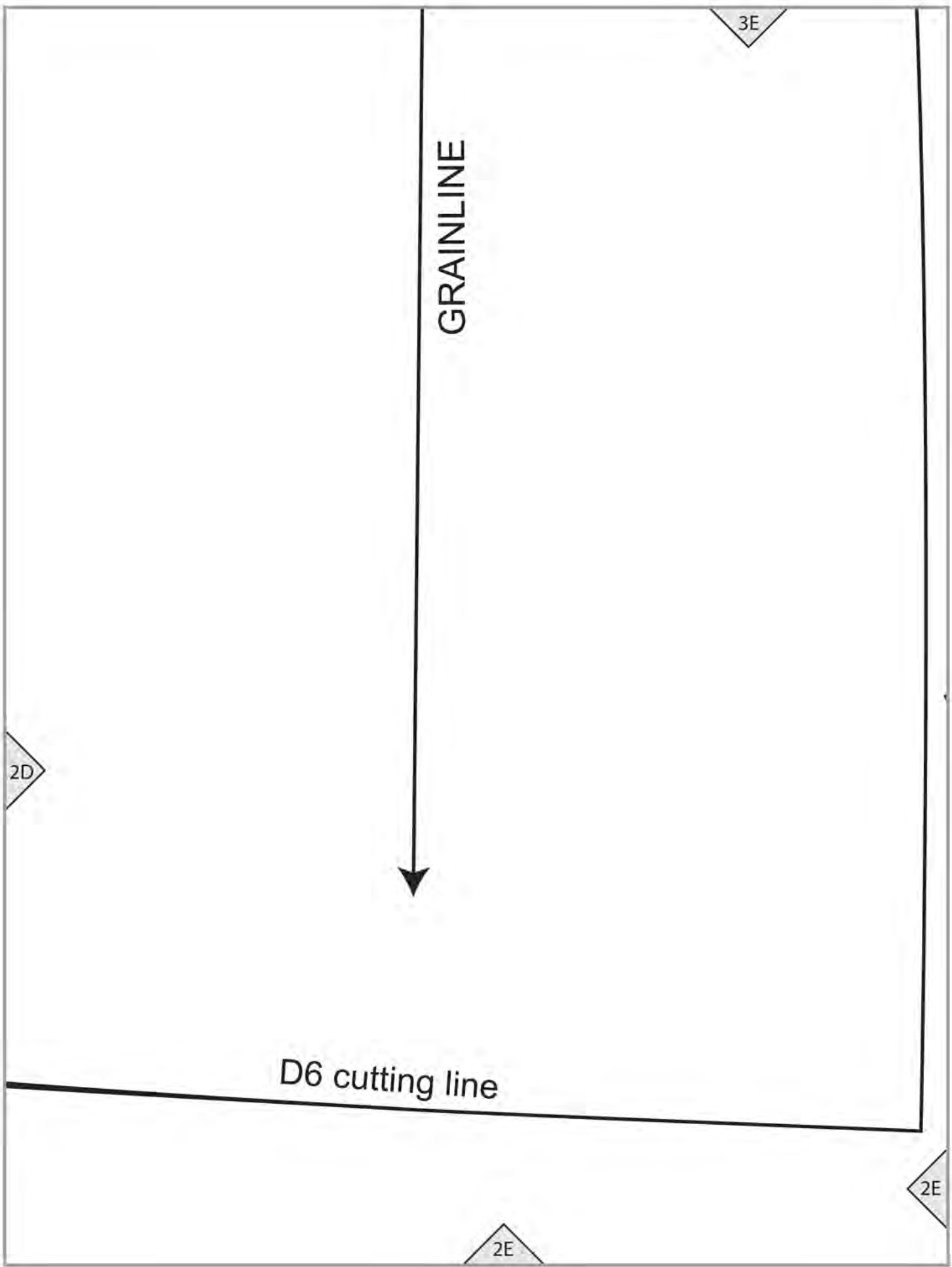
2B

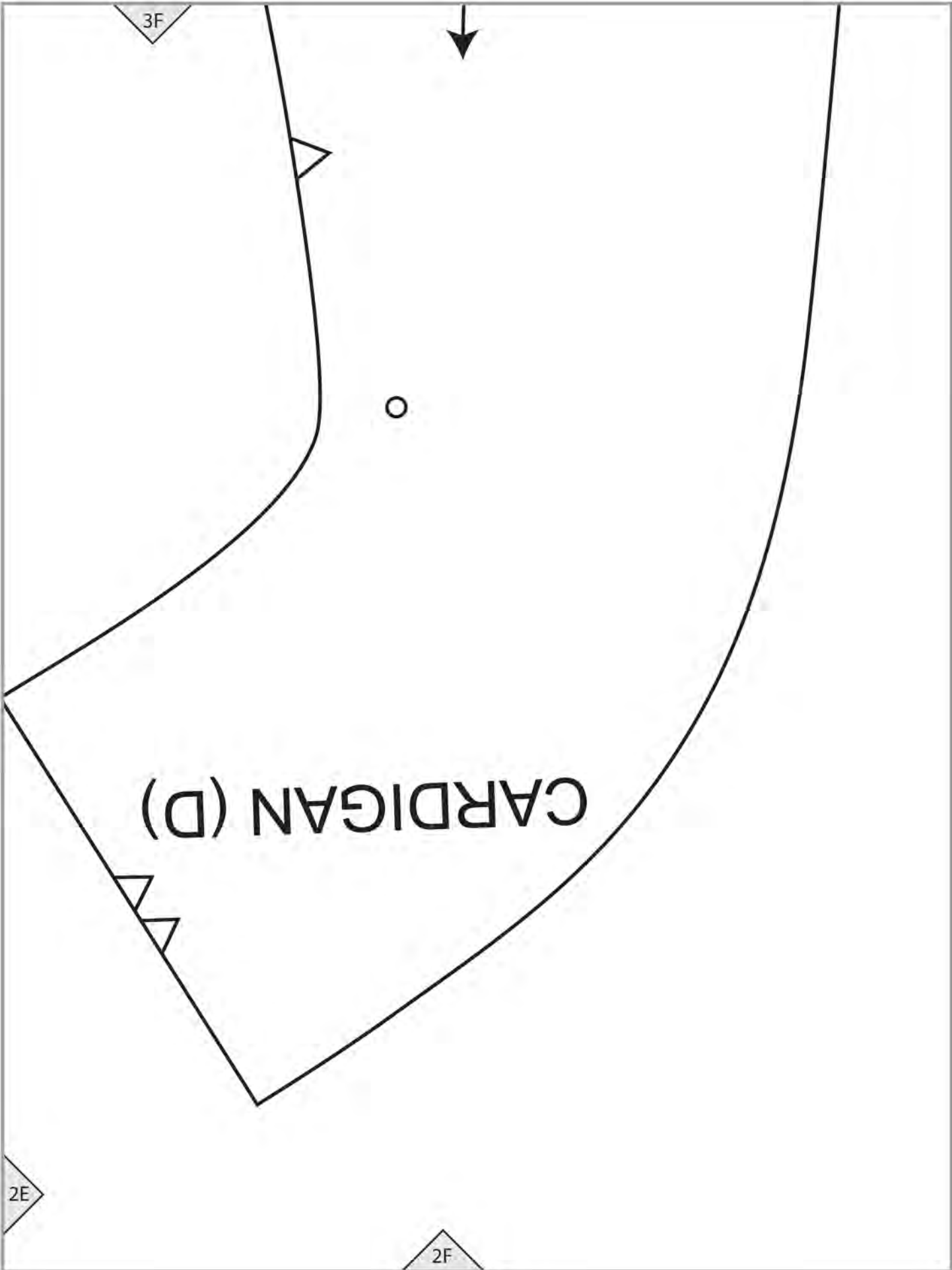
2C

2C







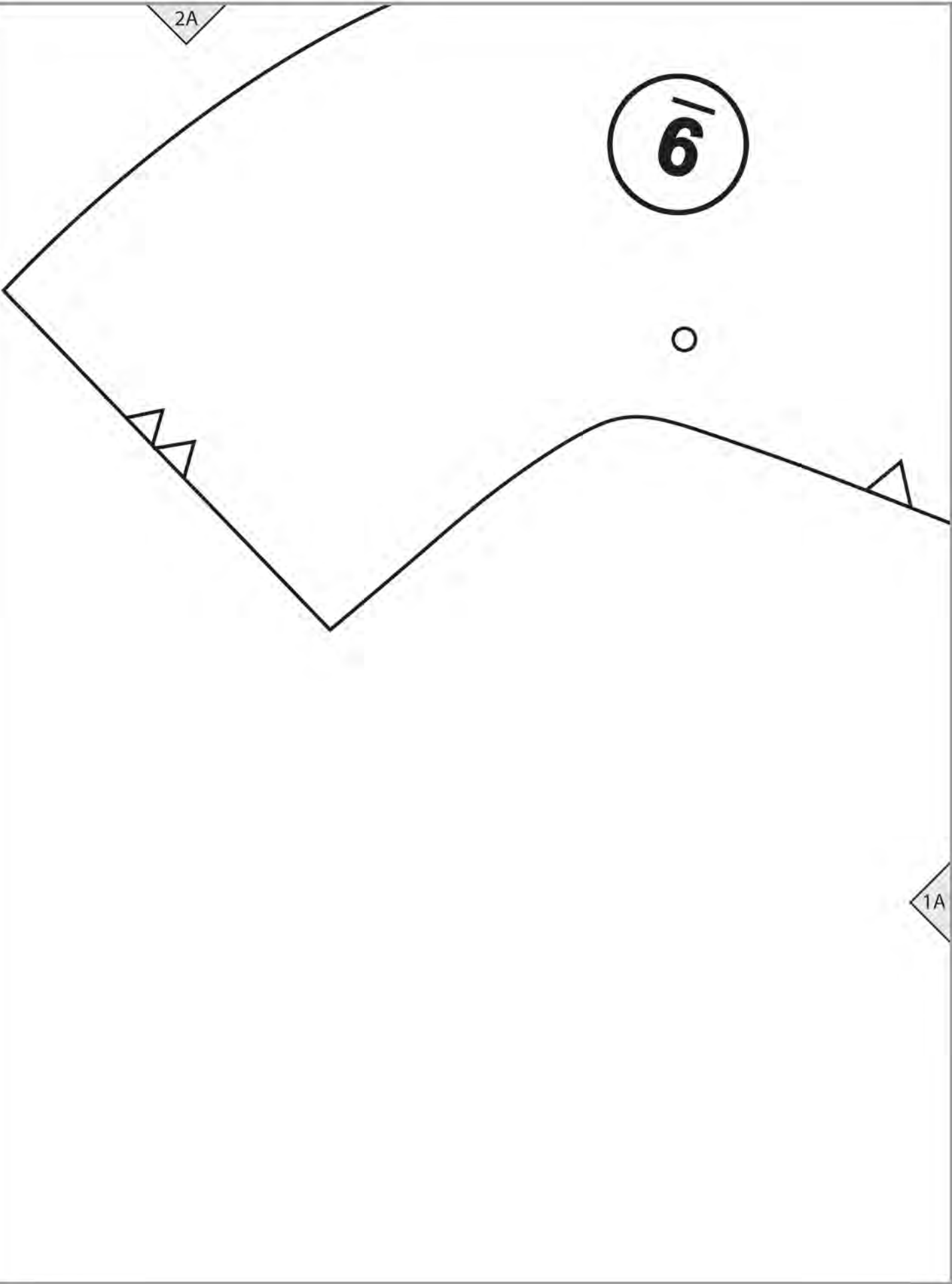


2A

6/

o

1A



2B

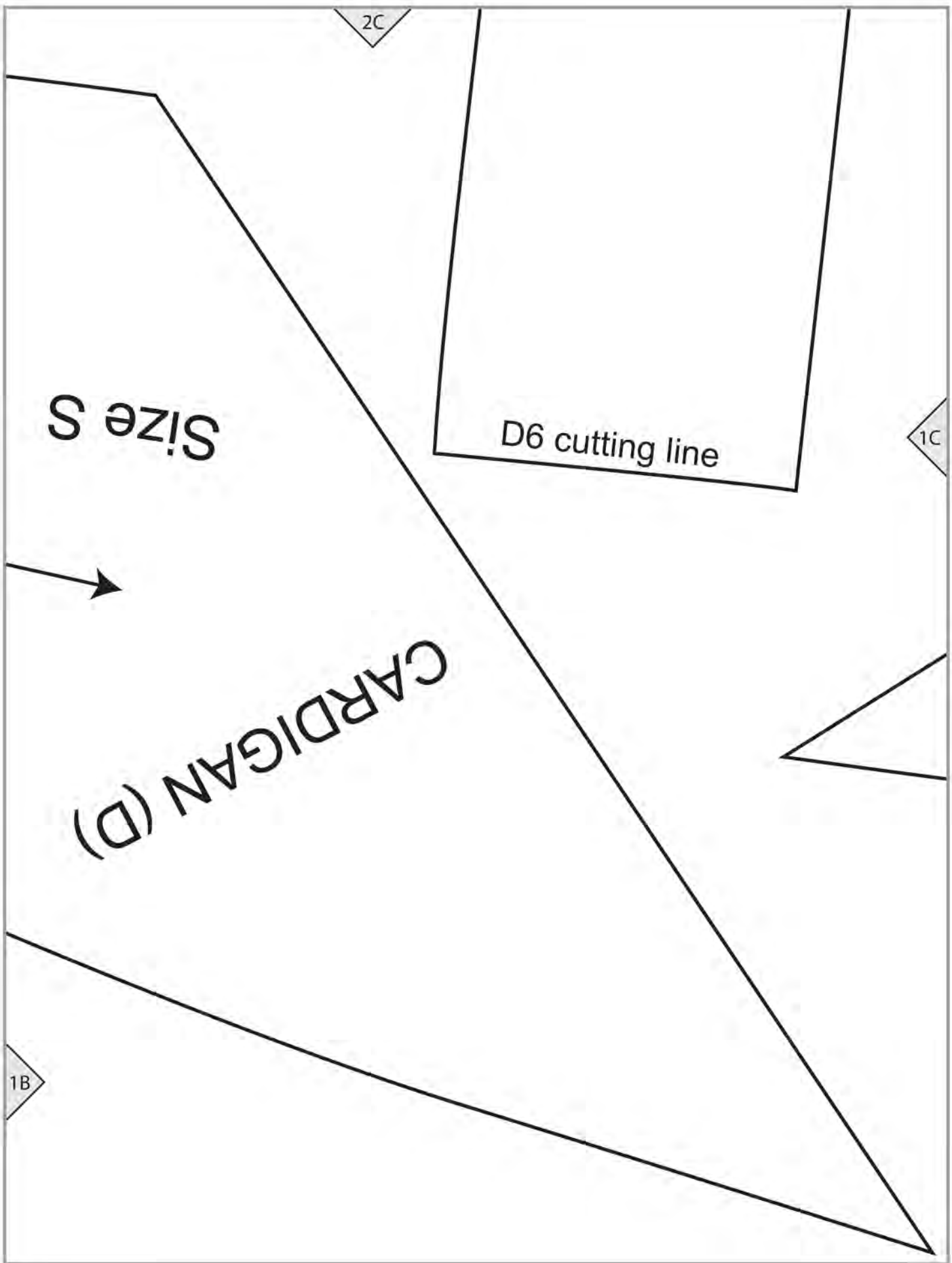
**COLLAR**  
Cut 4 of fabric  
Cut 2 of interfacing

GRAINLINE



1A

1B

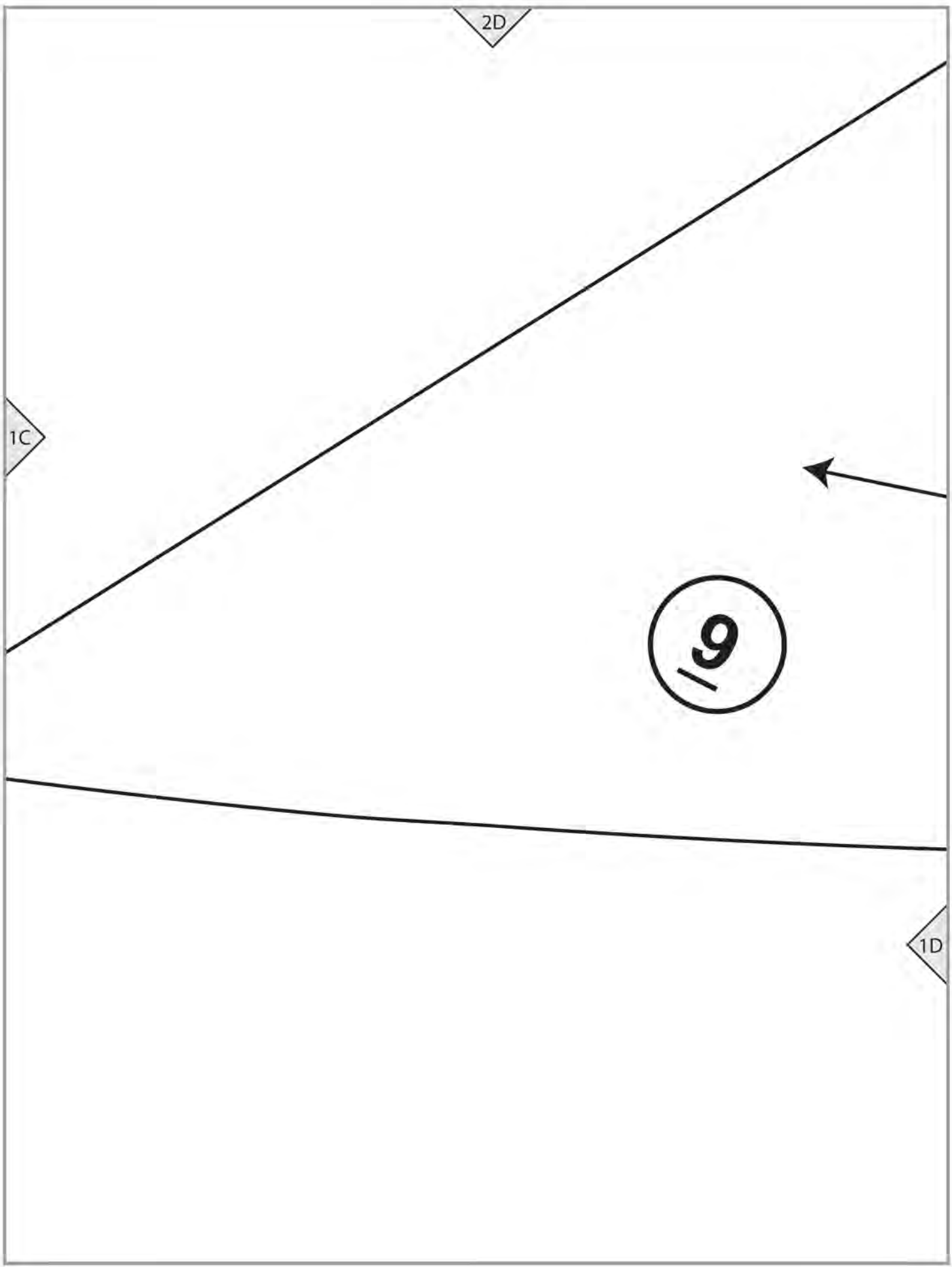


2D

1C

19

1D



2E

1E

Size M

**COLLAR**  
Cut 4 of fabric  
Cut 2 of interfacing

GRAINLINE



1D



