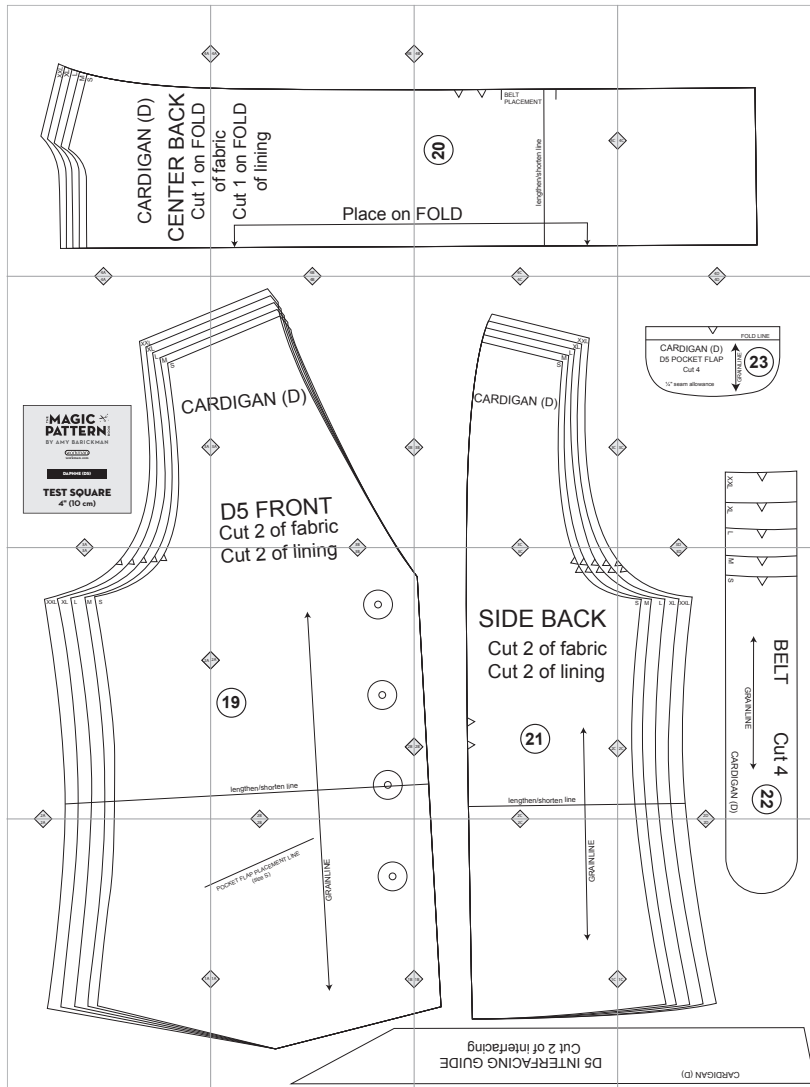


D5. Daphne

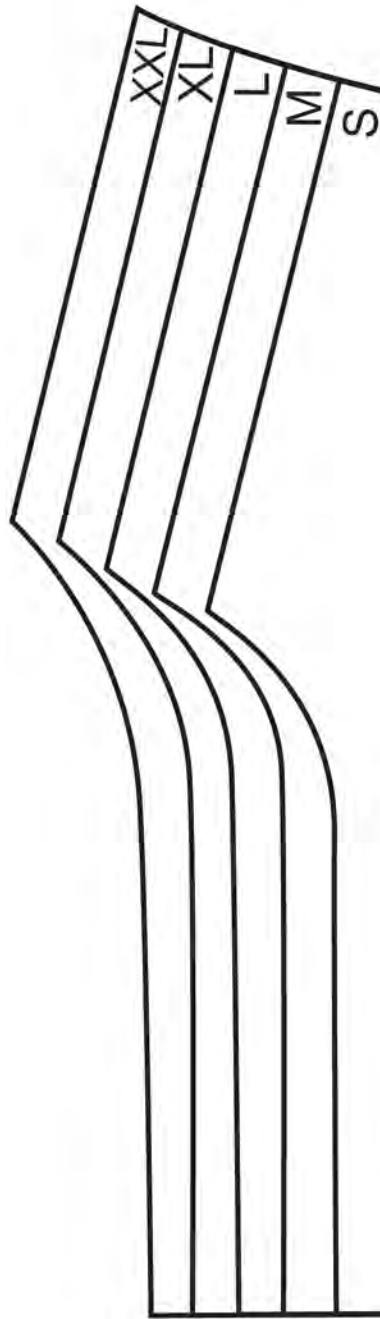


Copyright ©2014 by Amy Barickman

All rights reserved. Amy Barickman's patterns may be printed for personal use, but may not be otherwise reproduced—mechanically, electronically, or by any other means, including photocopying—without written permission of the publisher.

Sewing pattern designs for *The Magic Pattern Book* by Amy Barickman are intended for personal use only, and not as the basis for commercial manufacturing.

Workman Publishing, New York • workman.com



CARDIGAN (D)

CENTER BACK

Cut 1 on FOLD

4A

4B

of fabric
Cut 1 on FOLD
of lining

Place on



4B

4B

BELT
PLACEMENT

20

4C

FOLD

lengthen/shorten line



4C

4C

4D

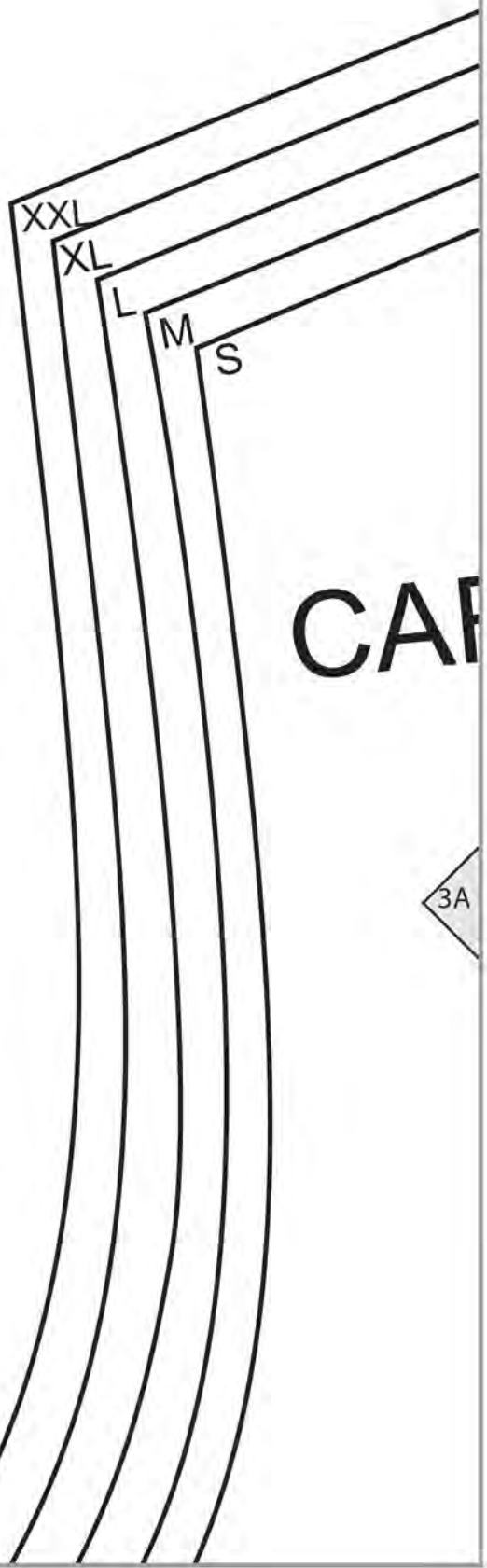
4A

THE MAGIC ✂️
PATTERN BOOK
BY AMY BARICKMAN

workman
workman.com

DAPHNE (D5)

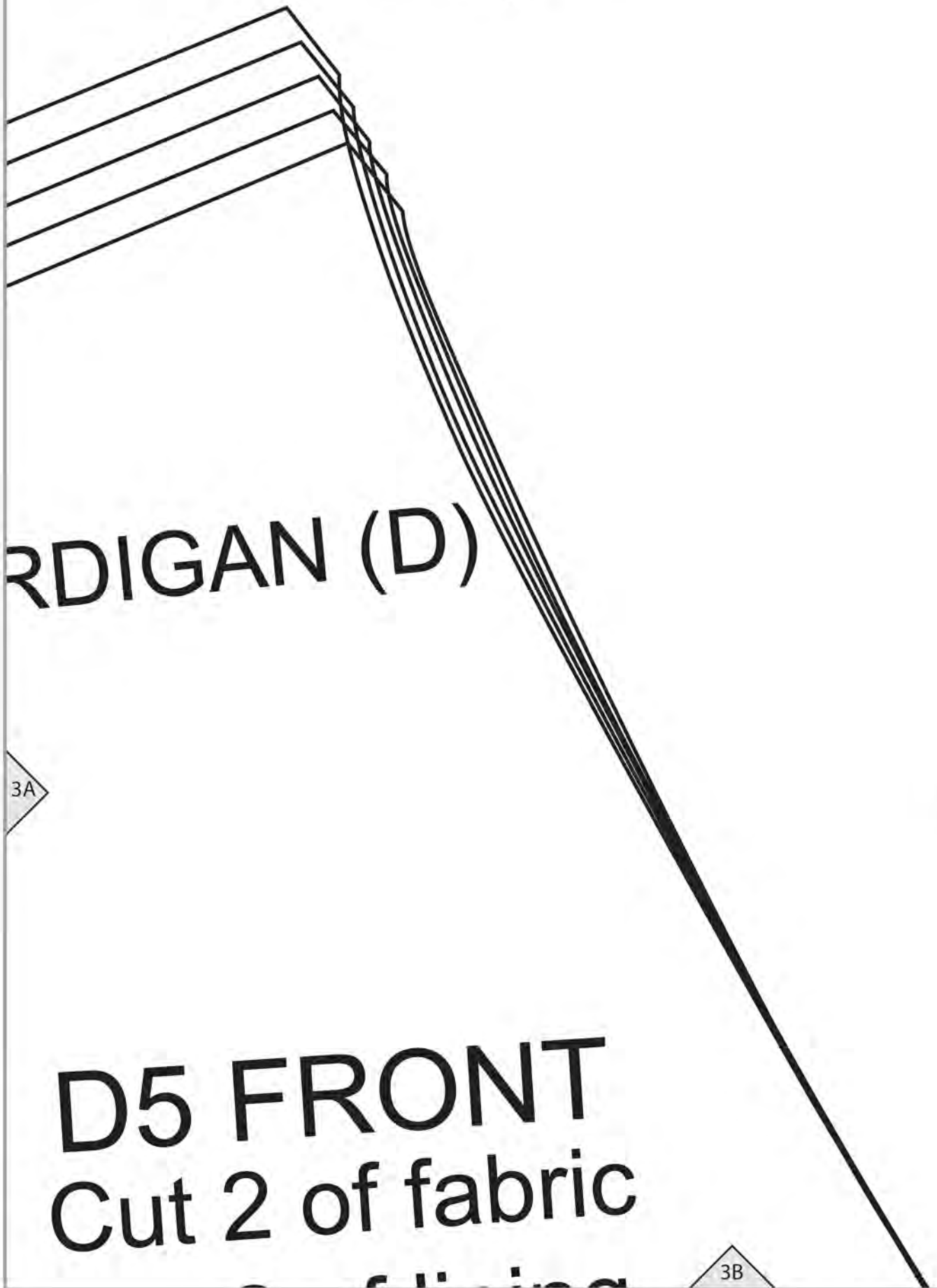
TEST SQUARE
4" (10 cm)



3A

3A

4B



RDIGAN (D)

3A

3B

D5 FRONT
Cut 2 of fabric

3B

4C

CARDIGAN (D)

S

M

L

XL

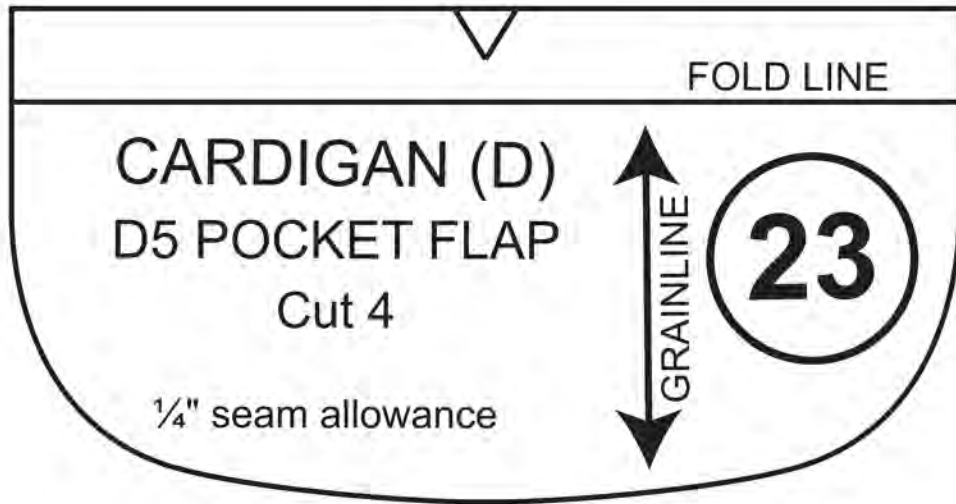
XXL

3B

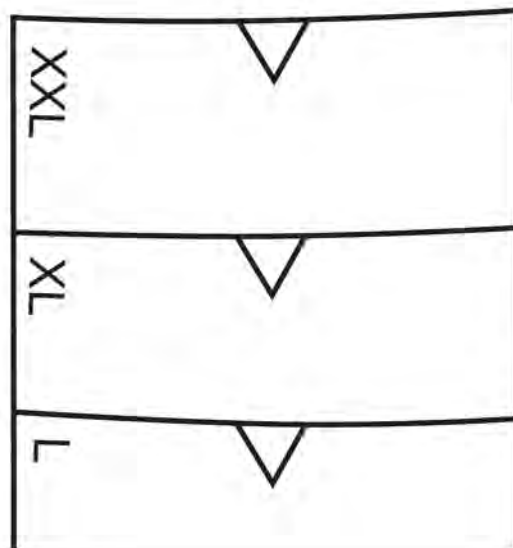
3C

3C

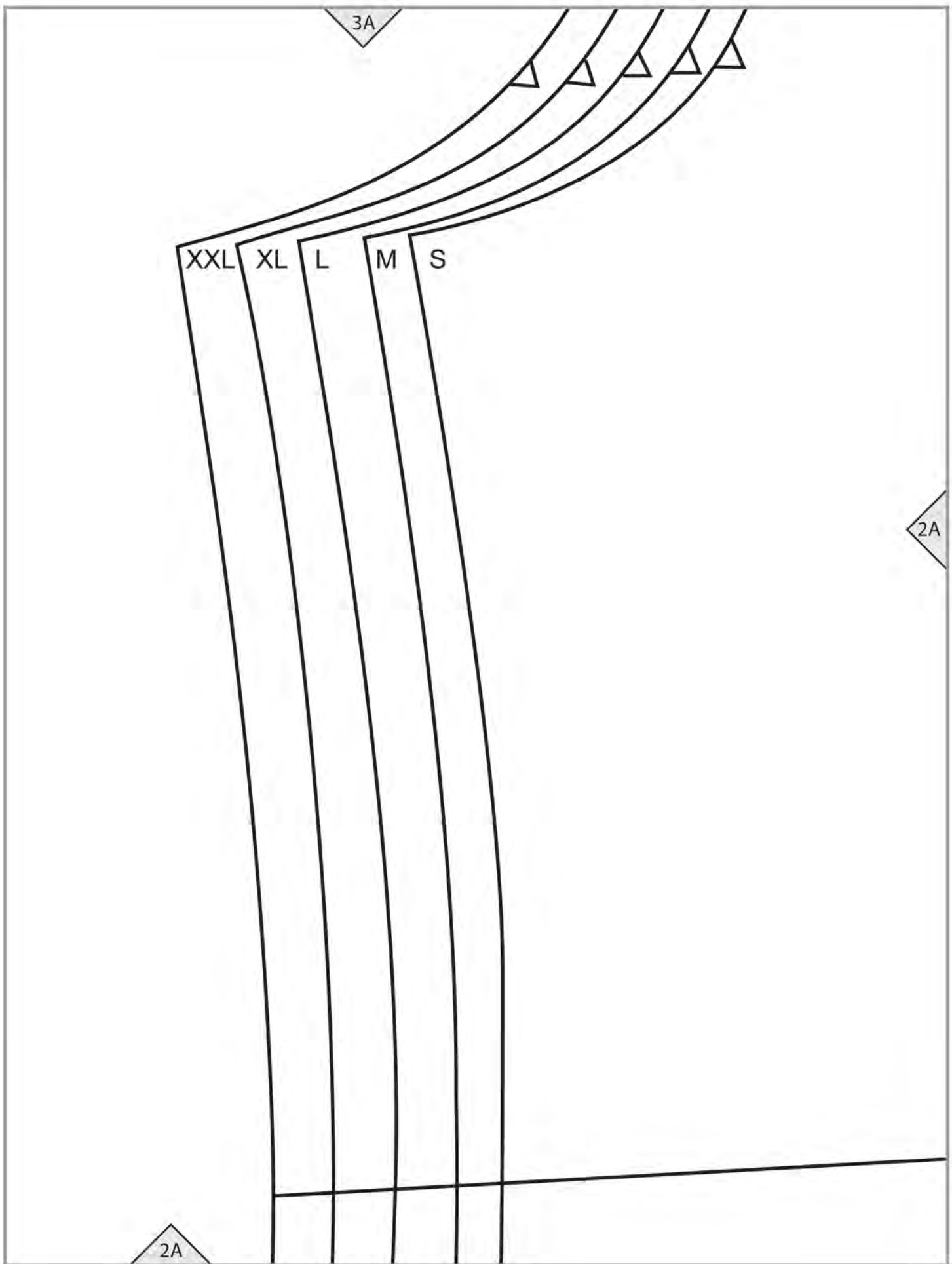
4D



3C



3D



Cut 2 of lining

3B

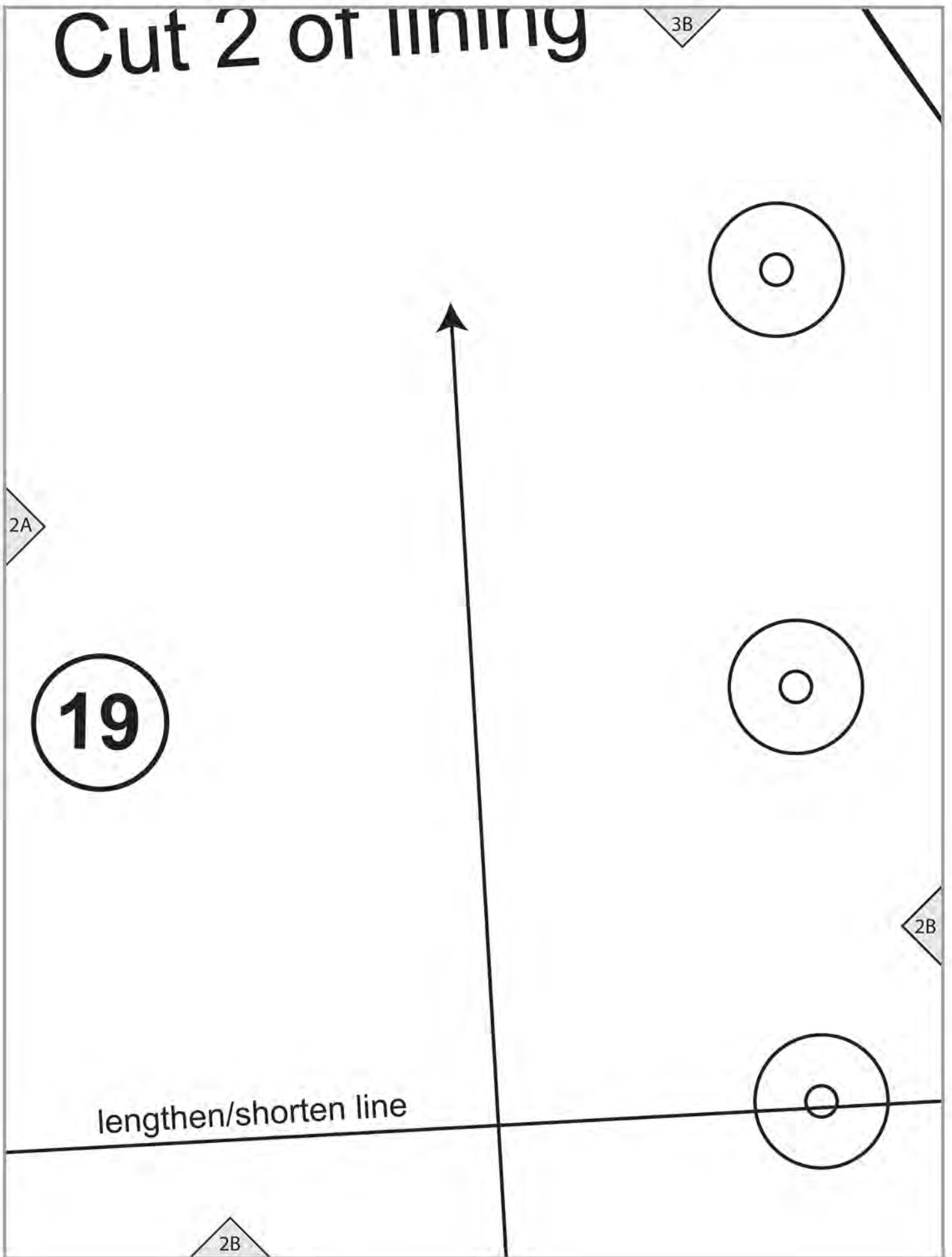
2A

19

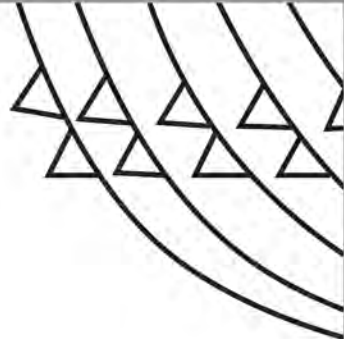
2B

lengthen/shorten line

2B



3C



SIDE BACK

Cut 2 of fabric
Cut 2 of lining

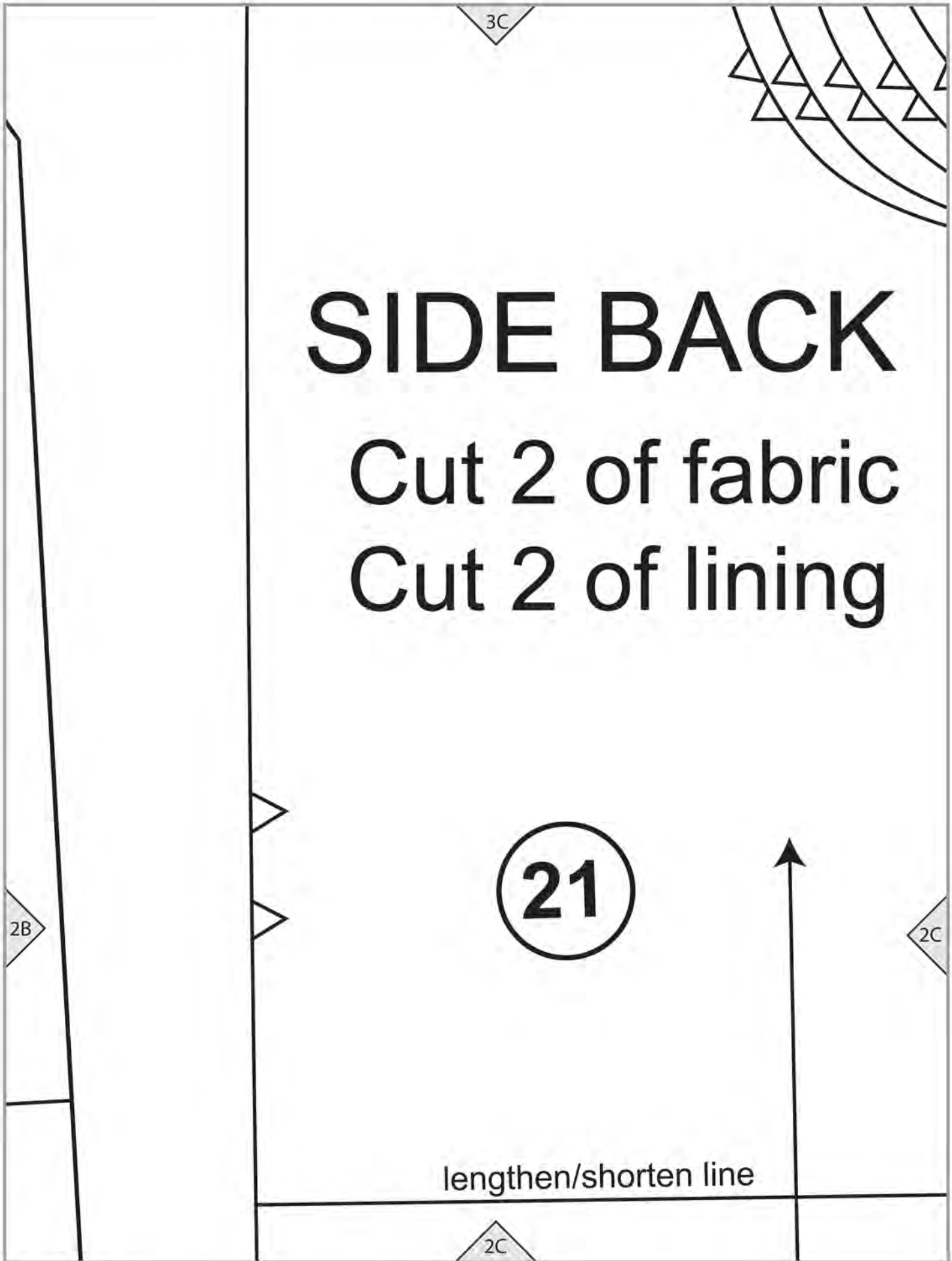
21

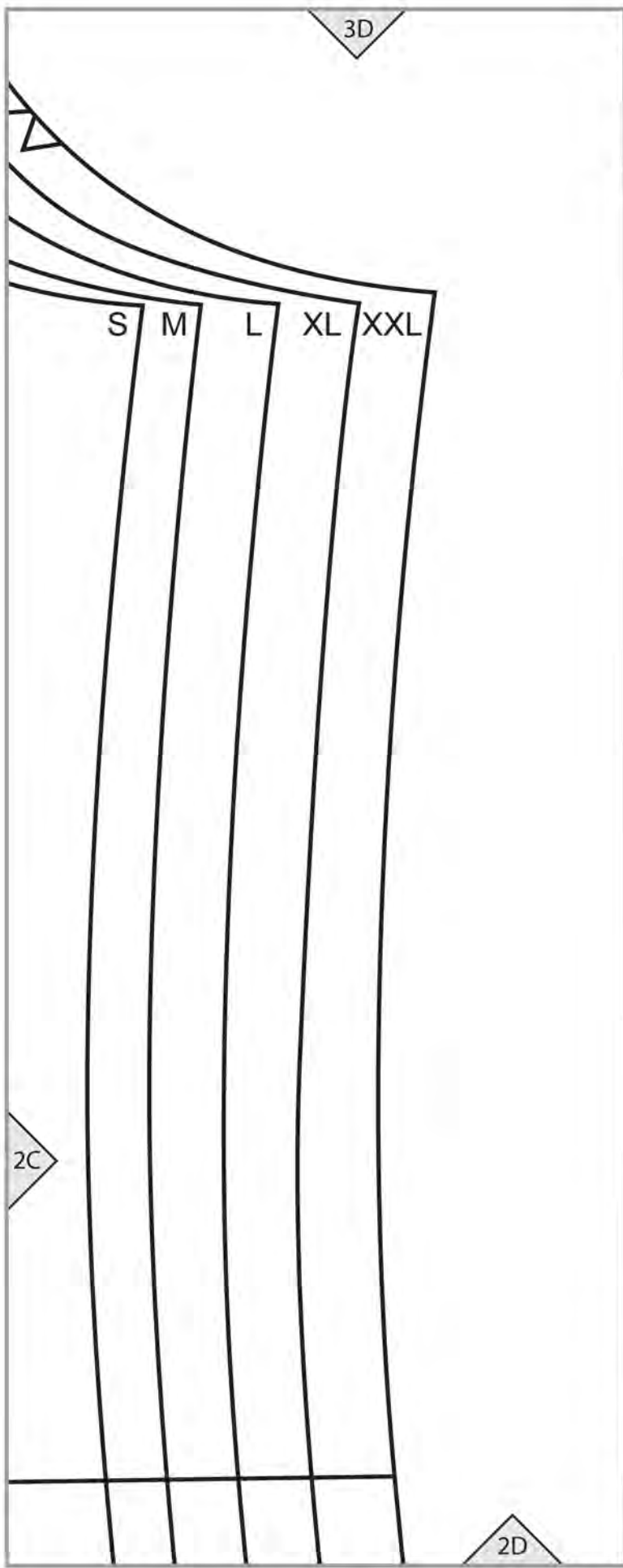
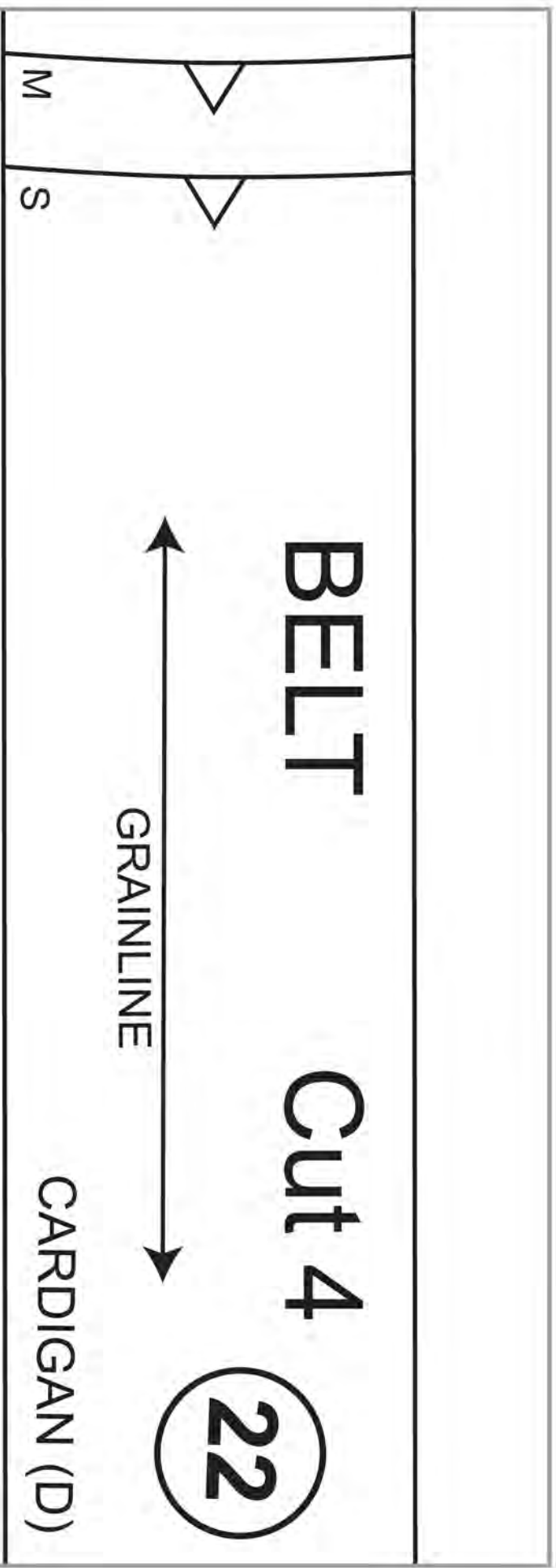
2B

2C

lengthen/shorten line

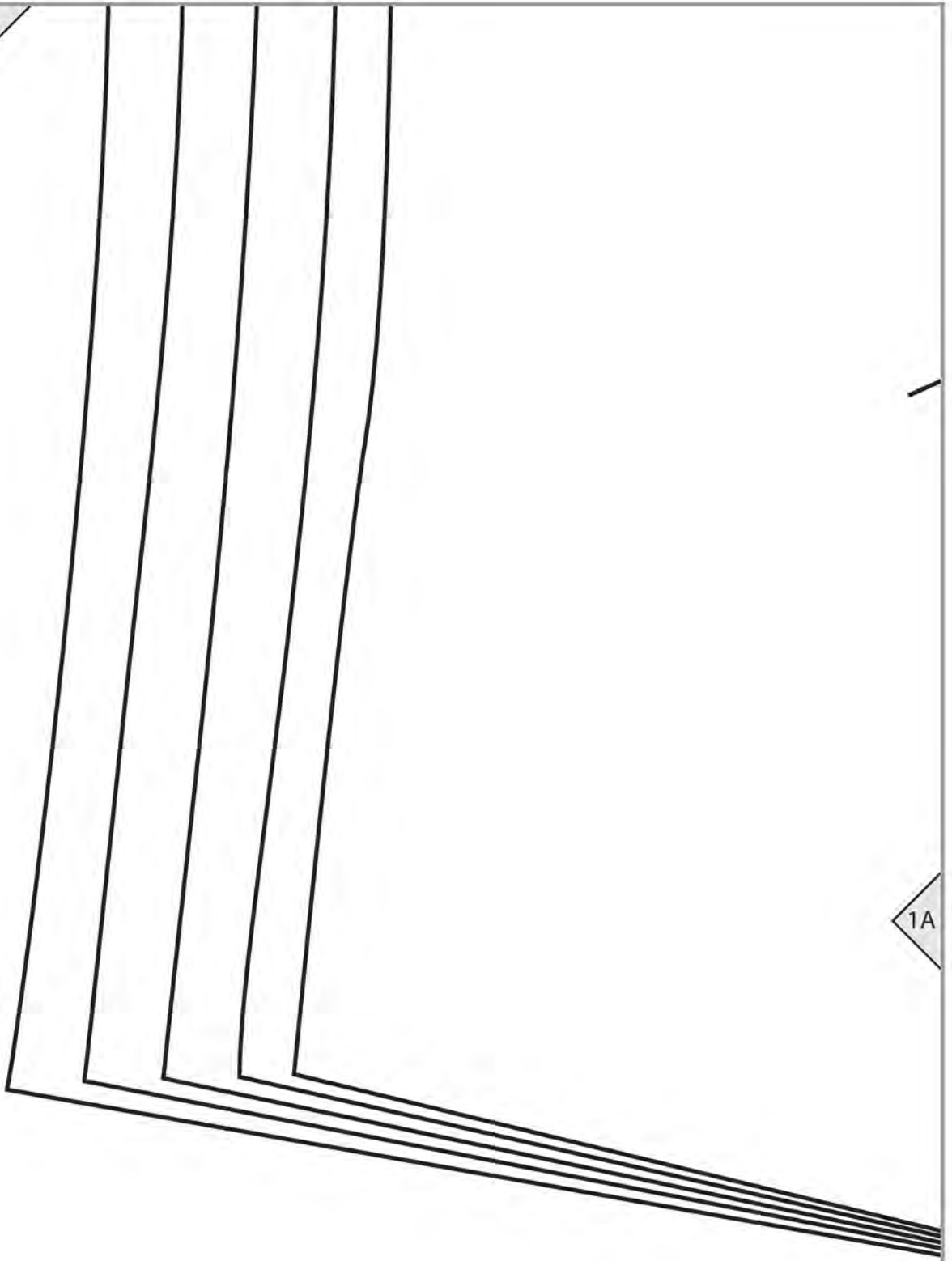
2C

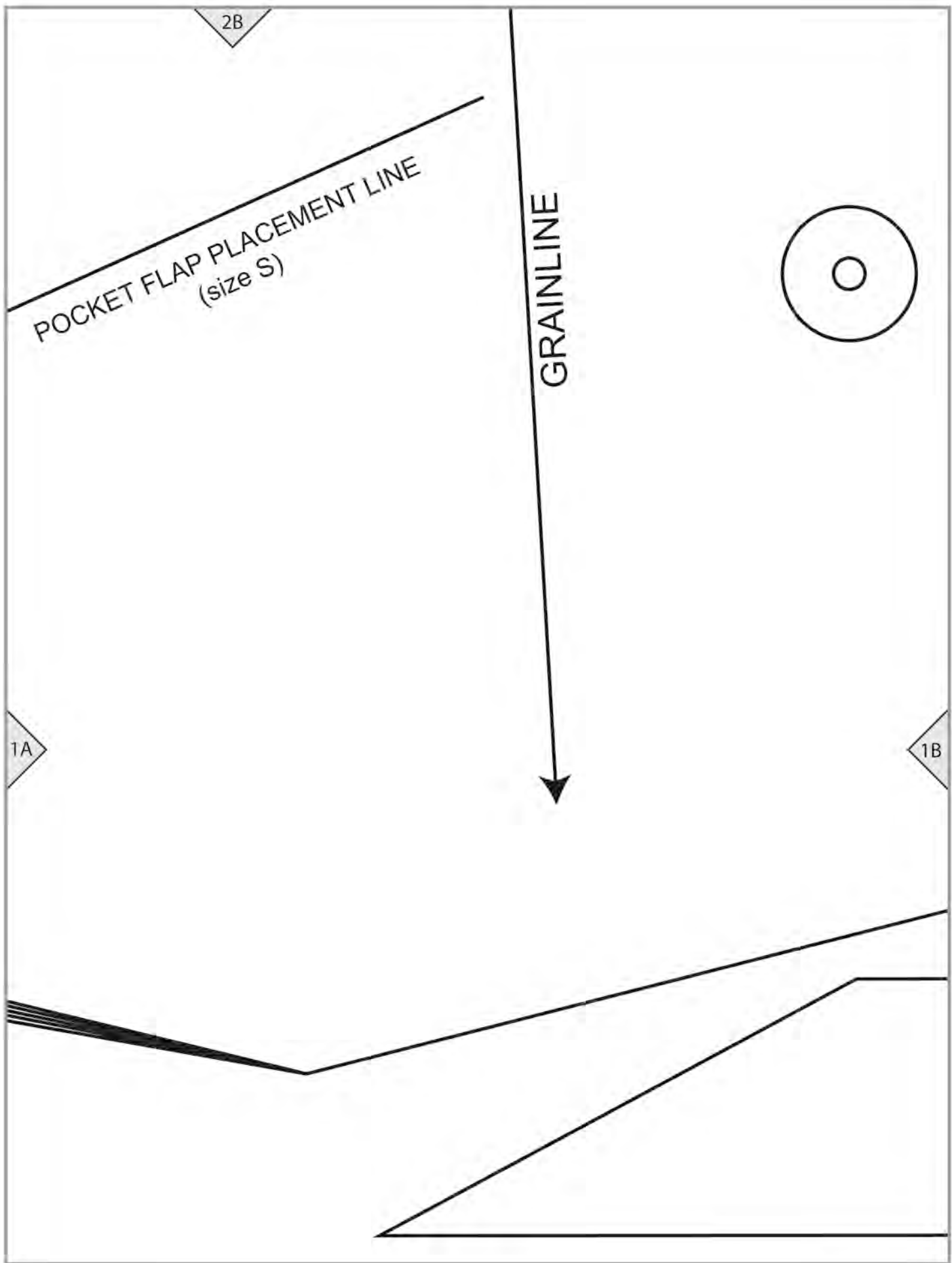




2A

1A





D5 INTERFACING GUIDE

Cut 2 of interfacing

