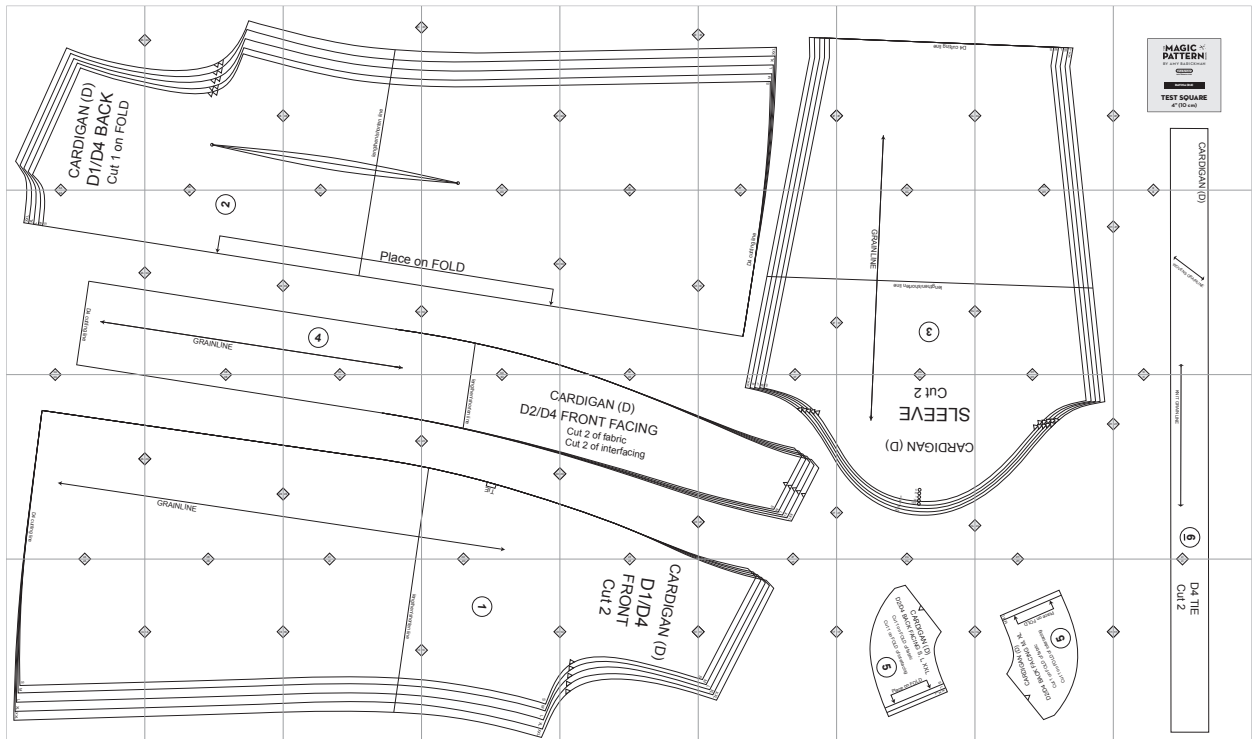


# D4. Davina



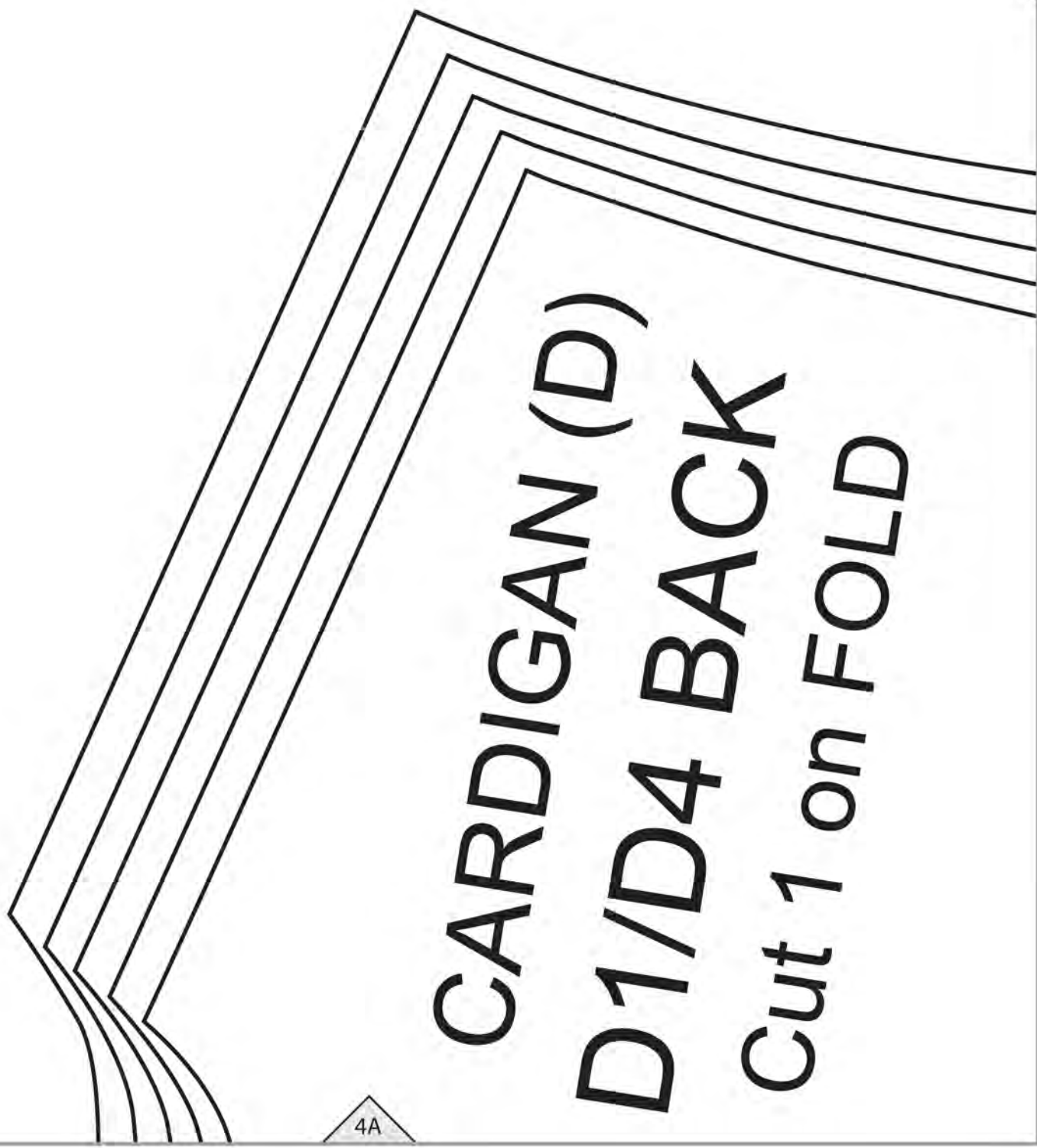
Copyright ©2014 by Amy Barickman

All rights reserved. Amy Barickman's patterns may be printed for personal use, but may not be otherwise reproduced—mechanically, electronically, or by any other means, including photocopying—without written permission of the publisher.

Sewing pattern designs for *The Magic Pattern Book* by Amy Barickman are intended for personal use only, and not as the basis for commercial manufacturing.

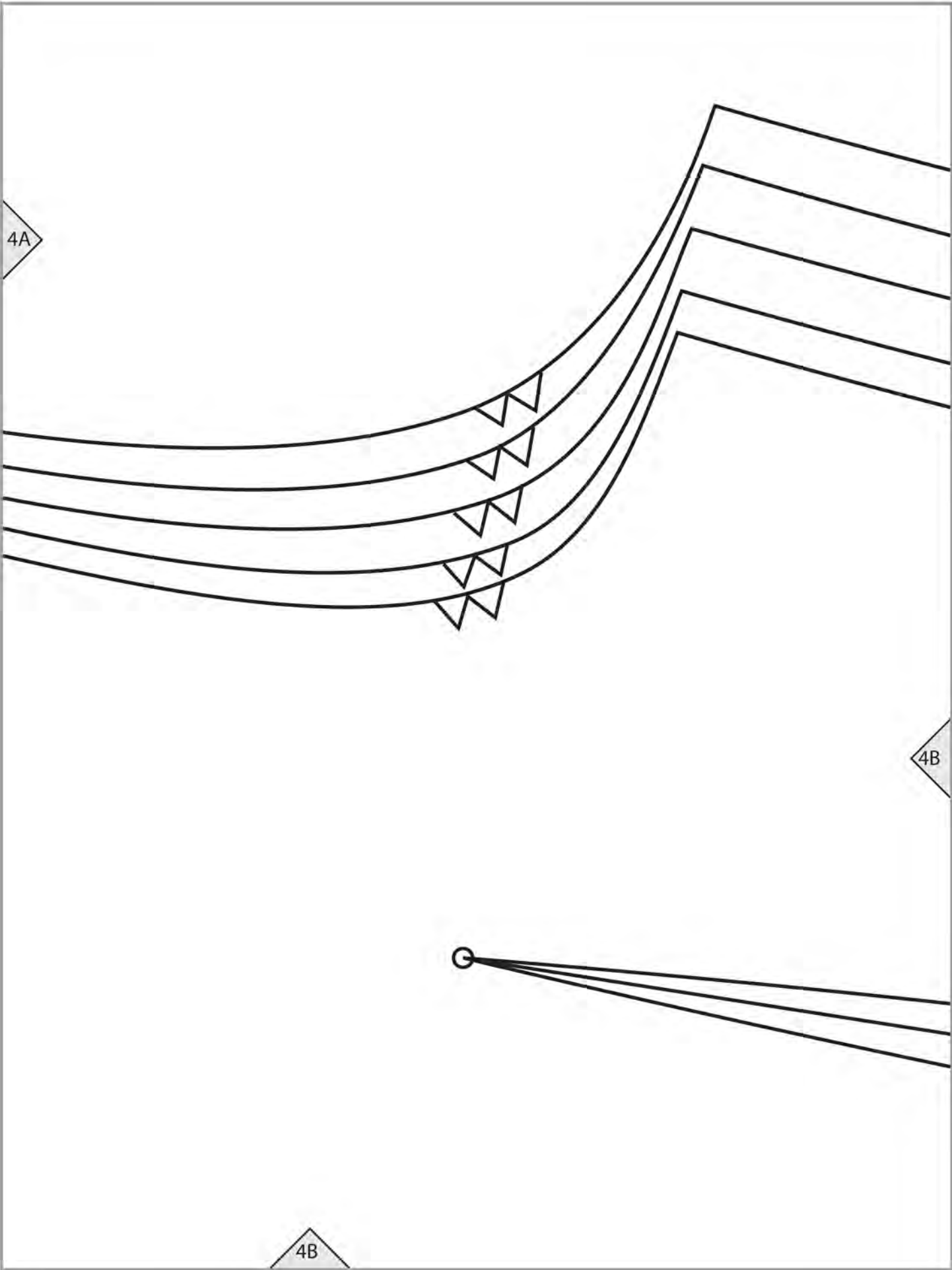
Workman Publishing, New York • [workman.com](http://workman.com)

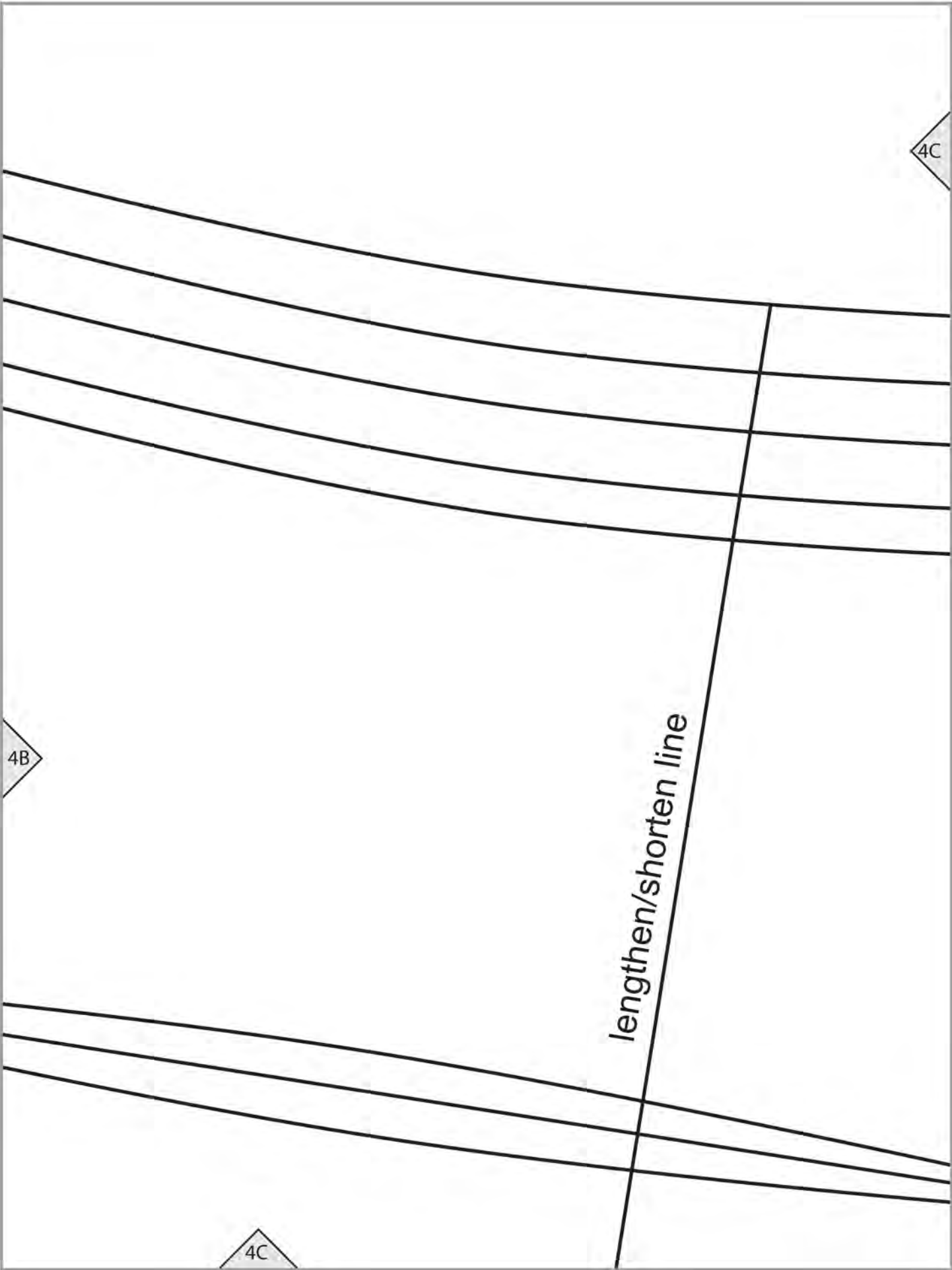
4A



**CARDIGAN (D)**  
**D1/D4 BACK**  
**Cut 1 on FOLD**

4A





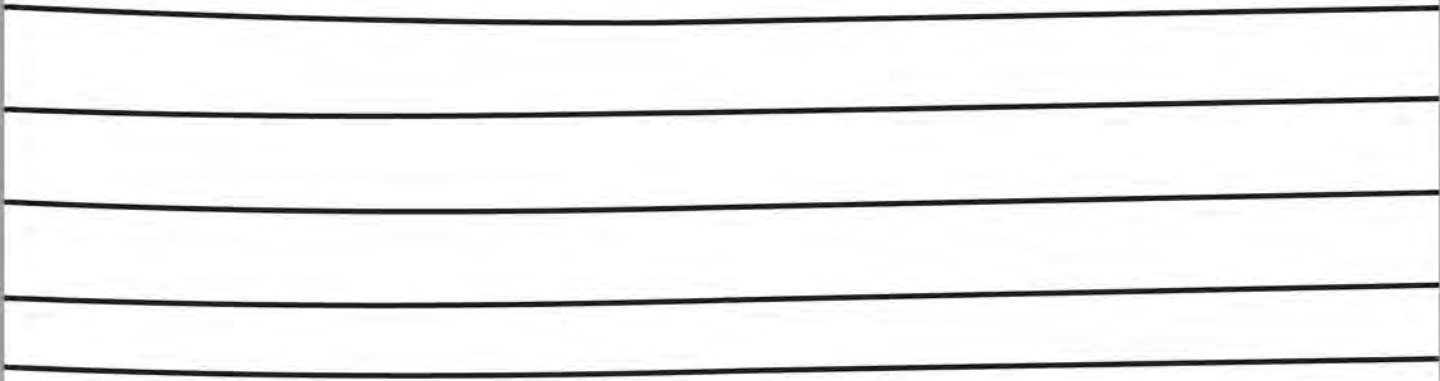
4B

4C

lengthen/shorten line

4C

4C



4D



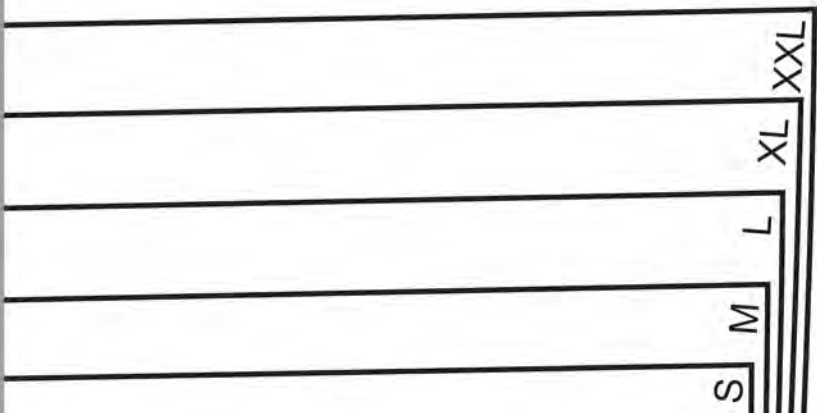
4D

4E

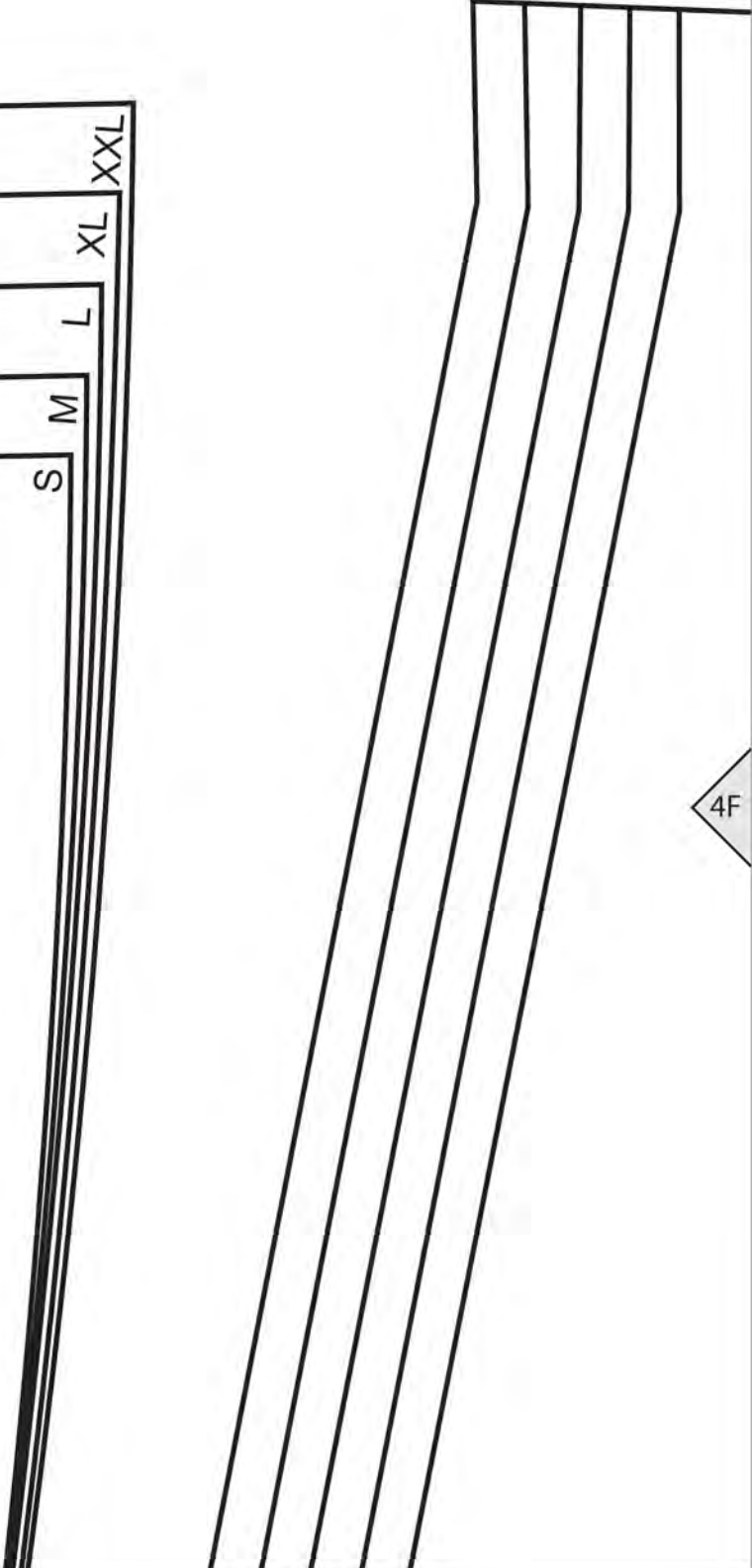
4D

4E

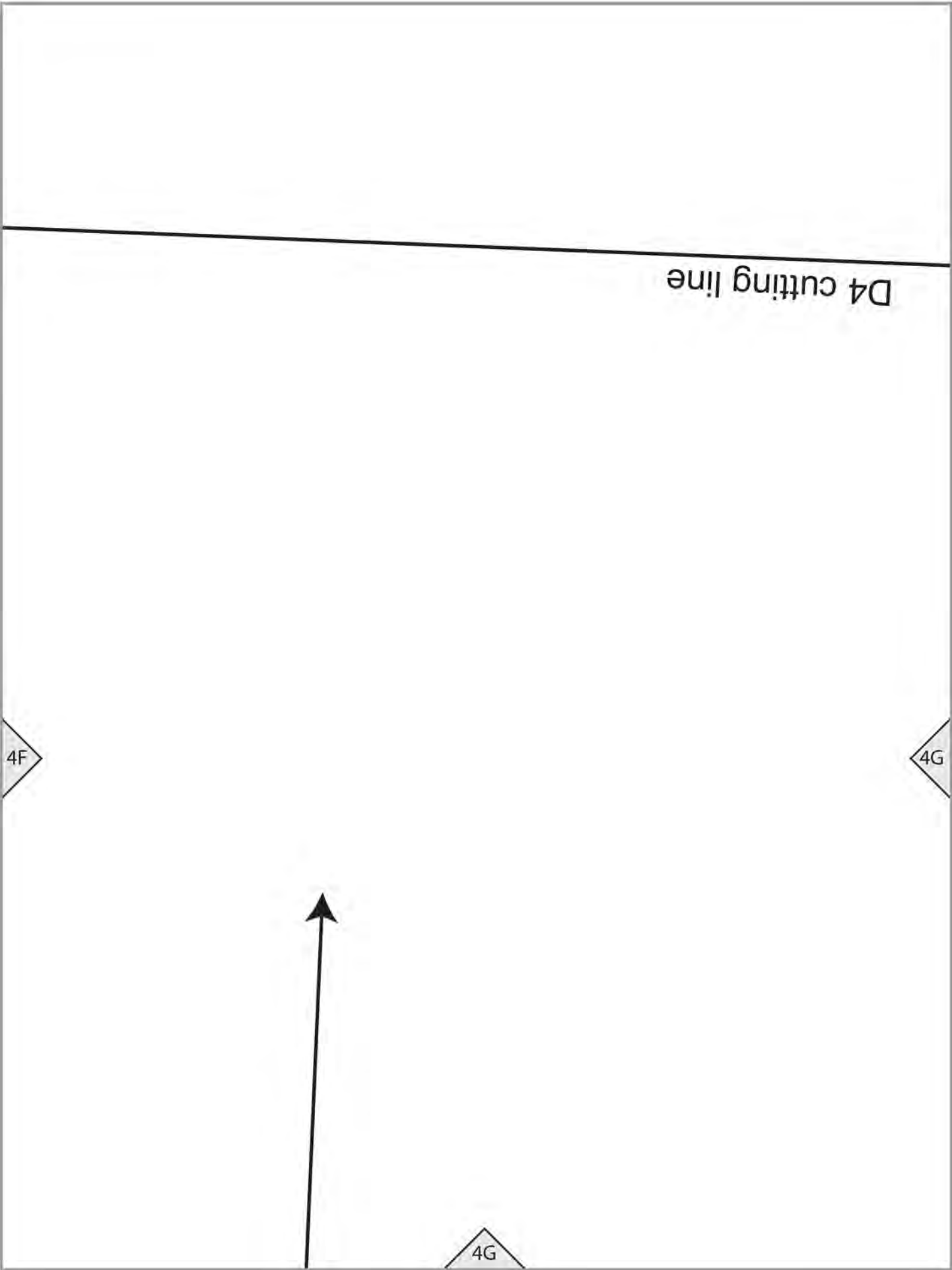
4E



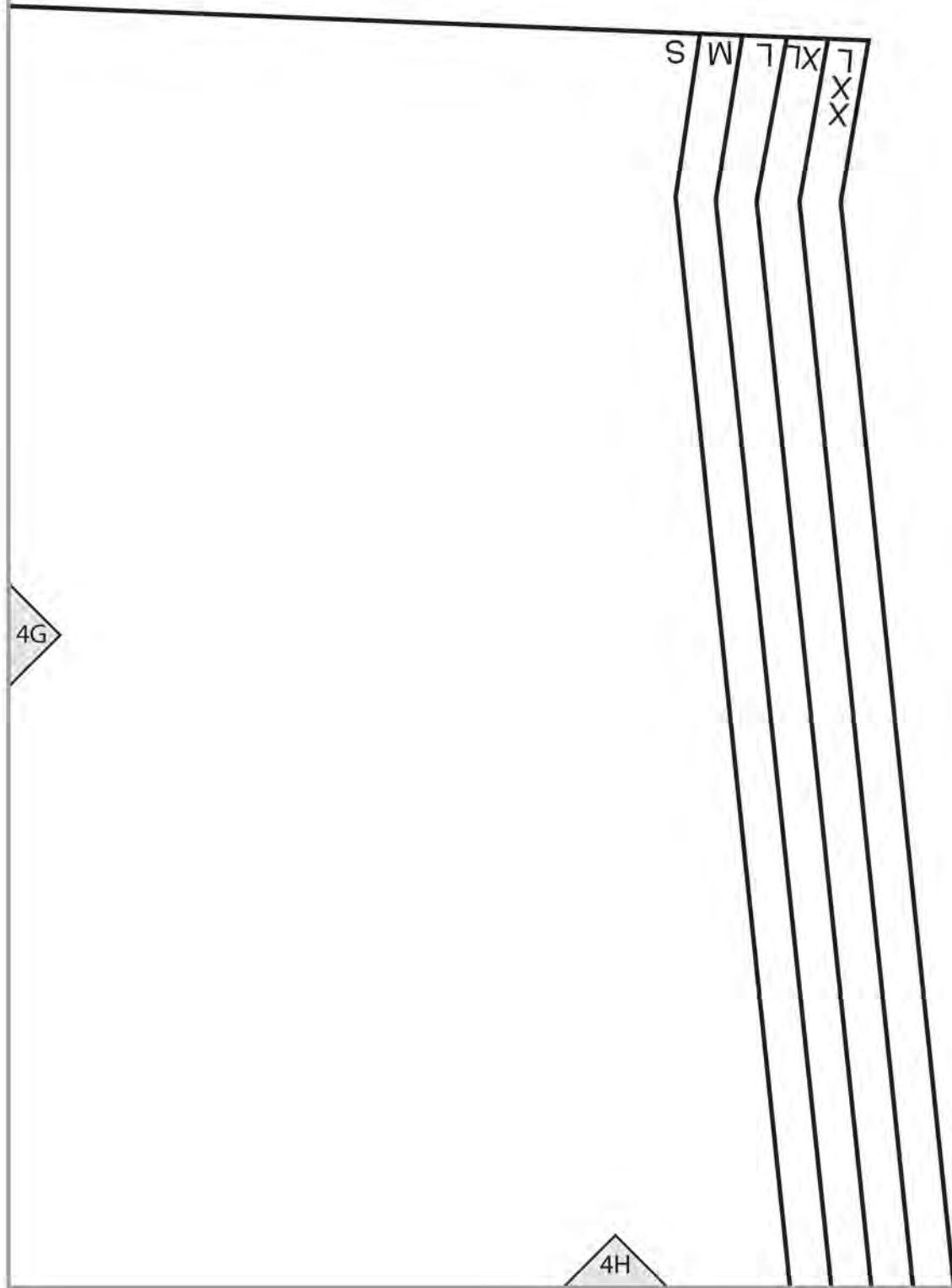
4F



4F







S W T TX T XX XX

4G

4H

4H

THE **MAGIC**   
**PATTERN** BOOK

BY AMY BARICKMAN

workman  
workman.com

**DAVINA (D4)**

**TEST SQUARE**  
4" (10 cm)

4H

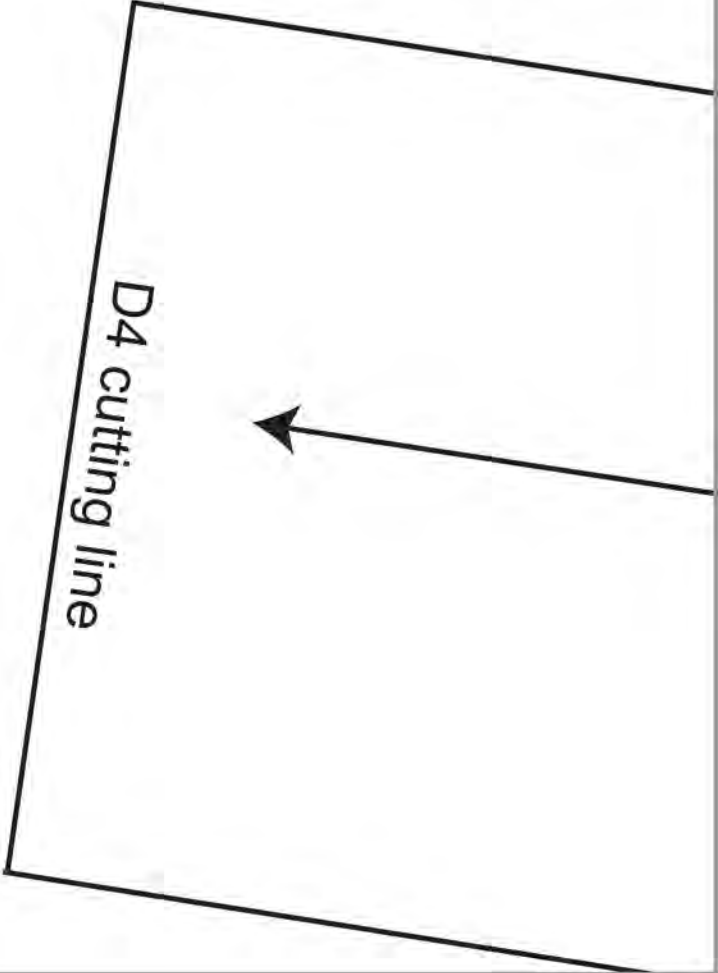
**CARDIGAN**

4I

XXL  
XL  
L  
M  
S

4A

3A



3A

4B

2



3A

3B

GRAINLINE

3B

4C

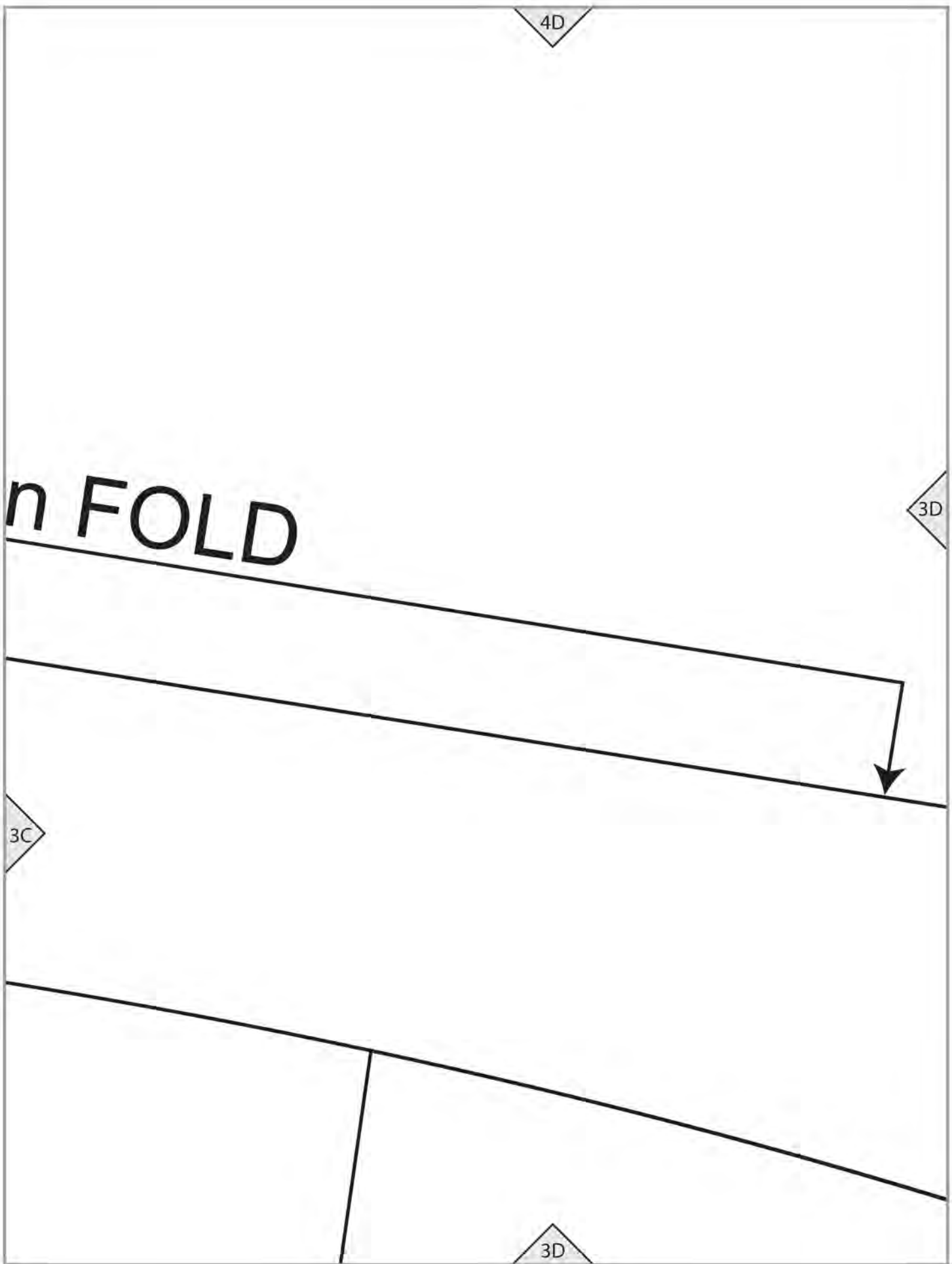
Place o

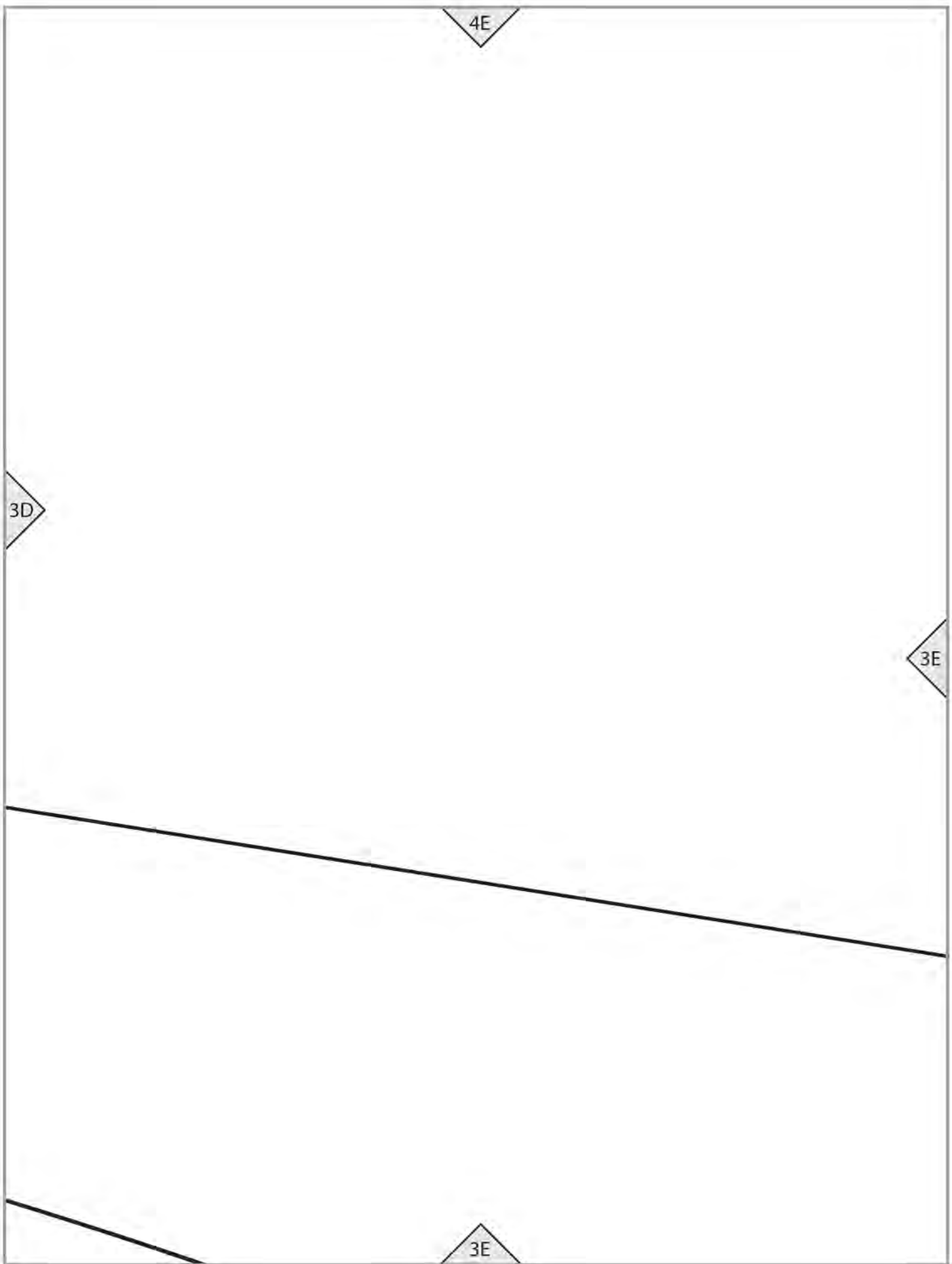
3B

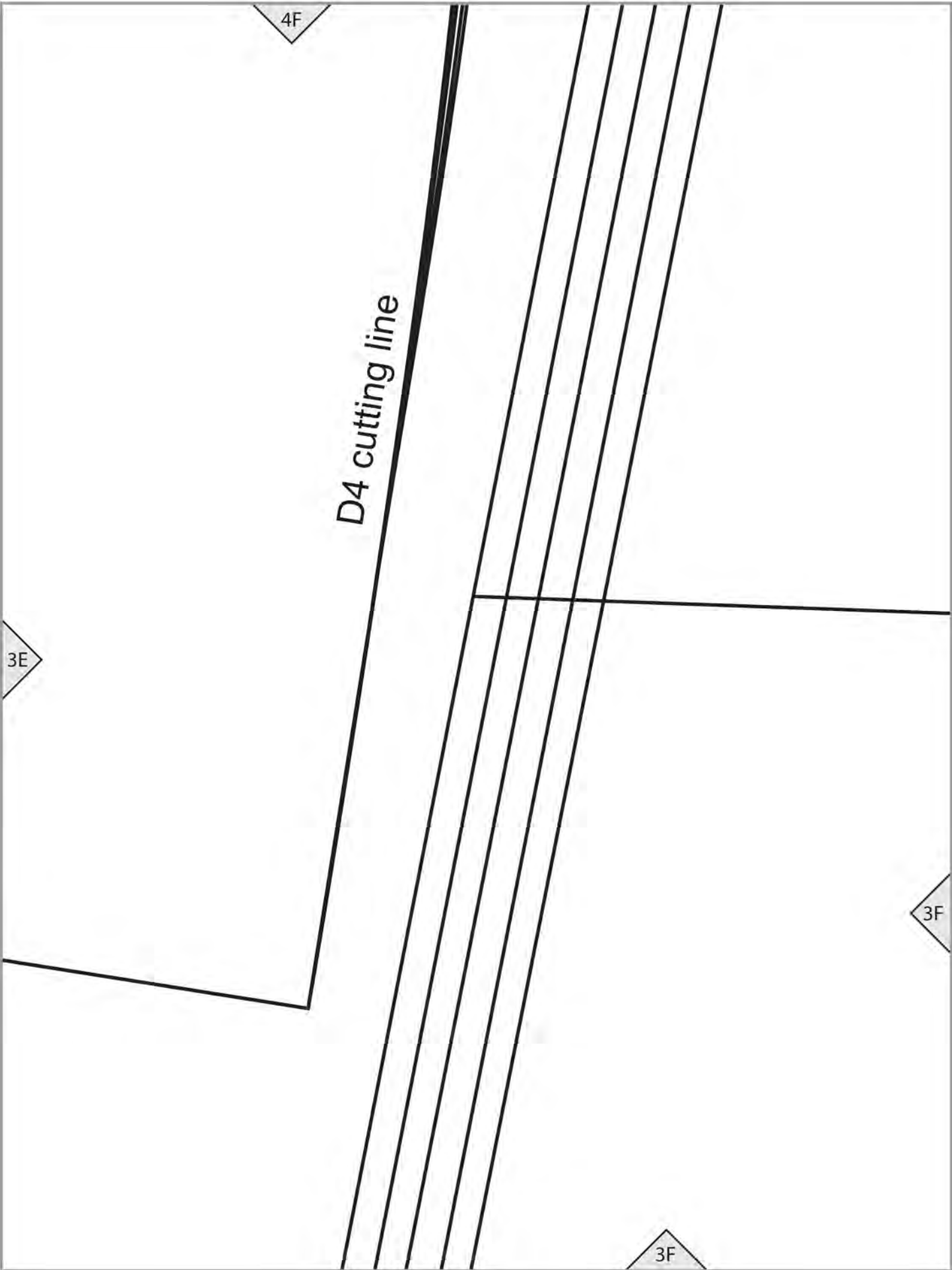
3C

4

3C







4F

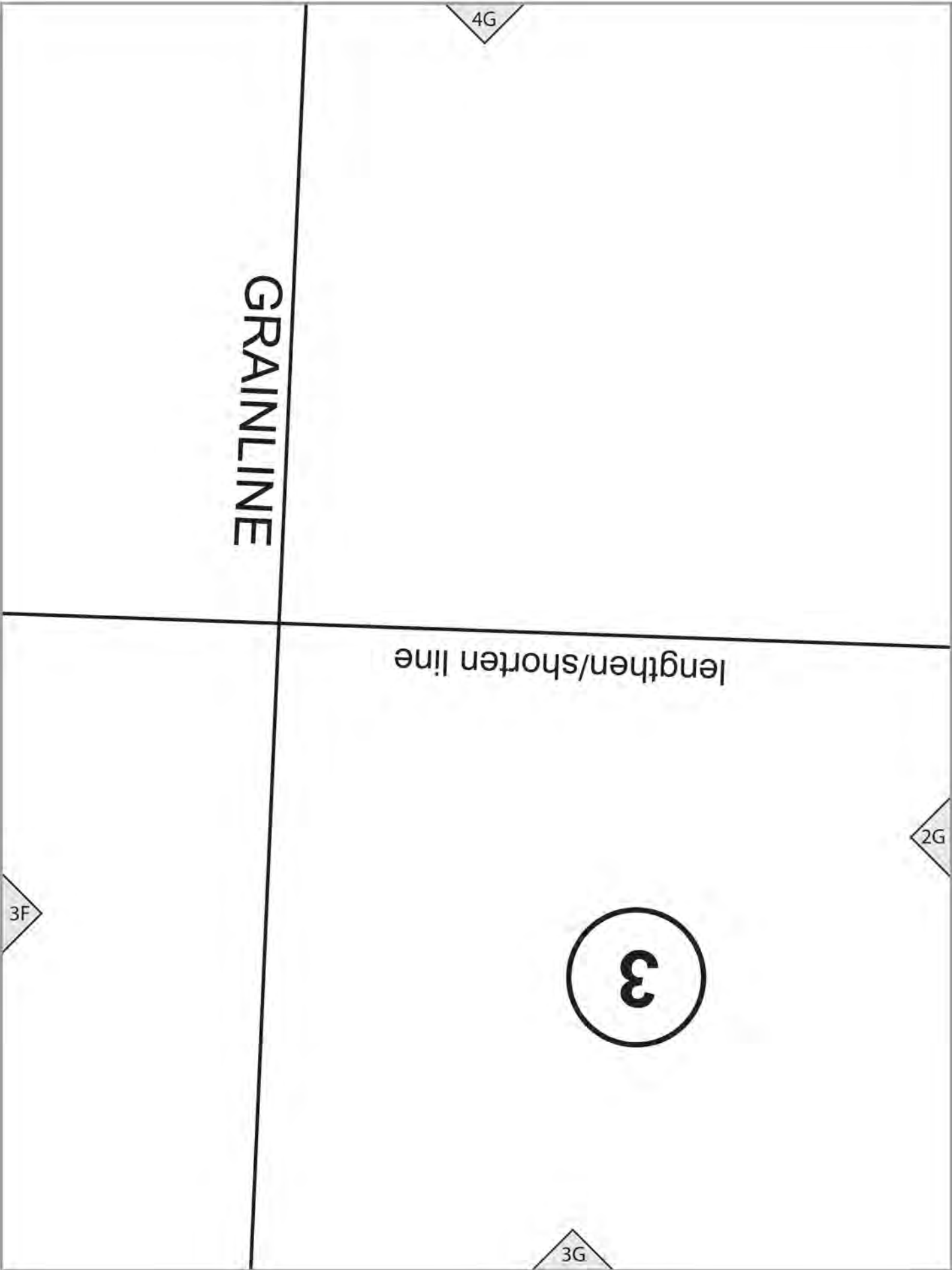
D4 cutting line

3E

3F

3F





GRAINLINE

lengthen/shorten line

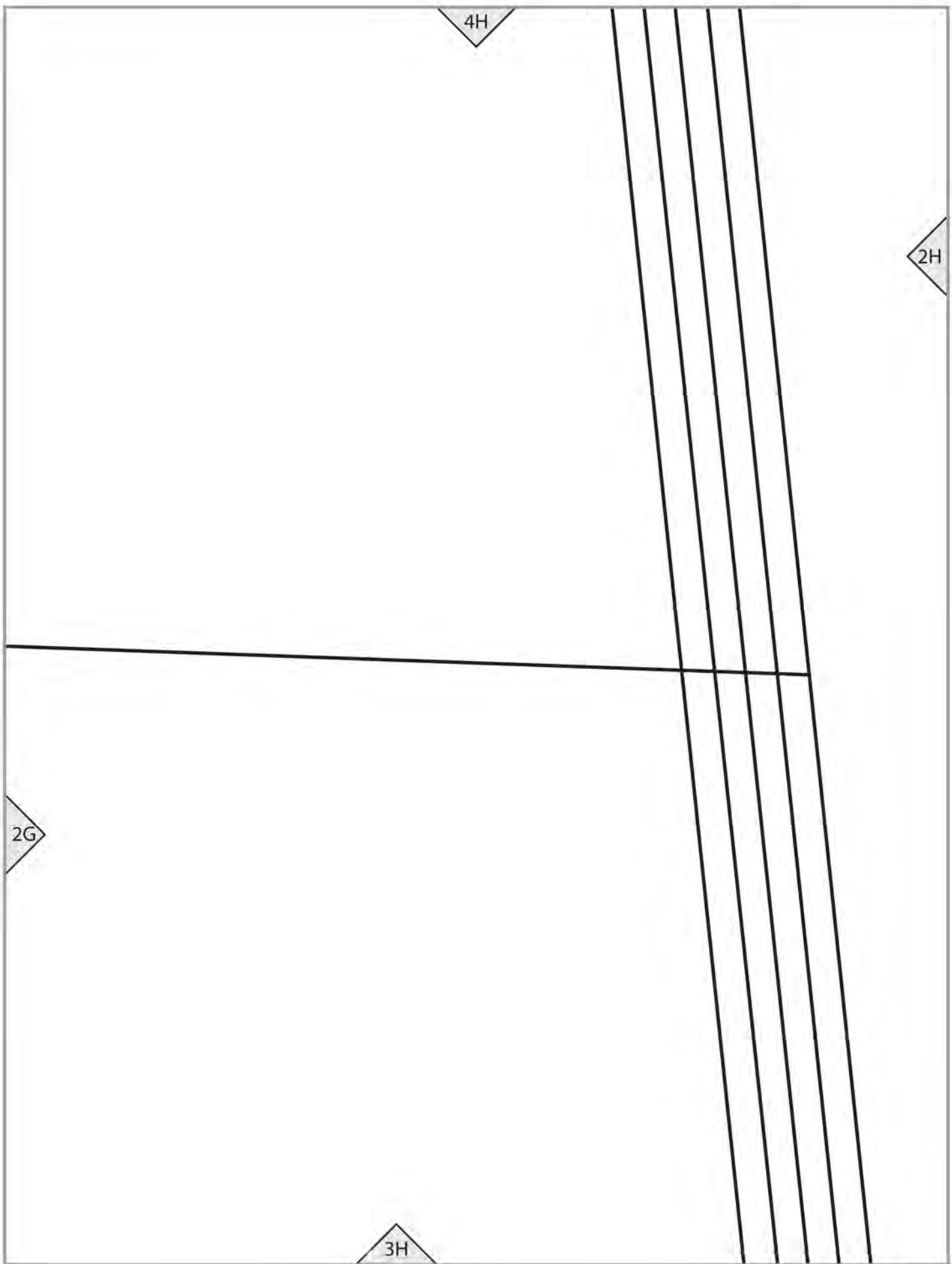


4G

2G

3G

3F



(D)

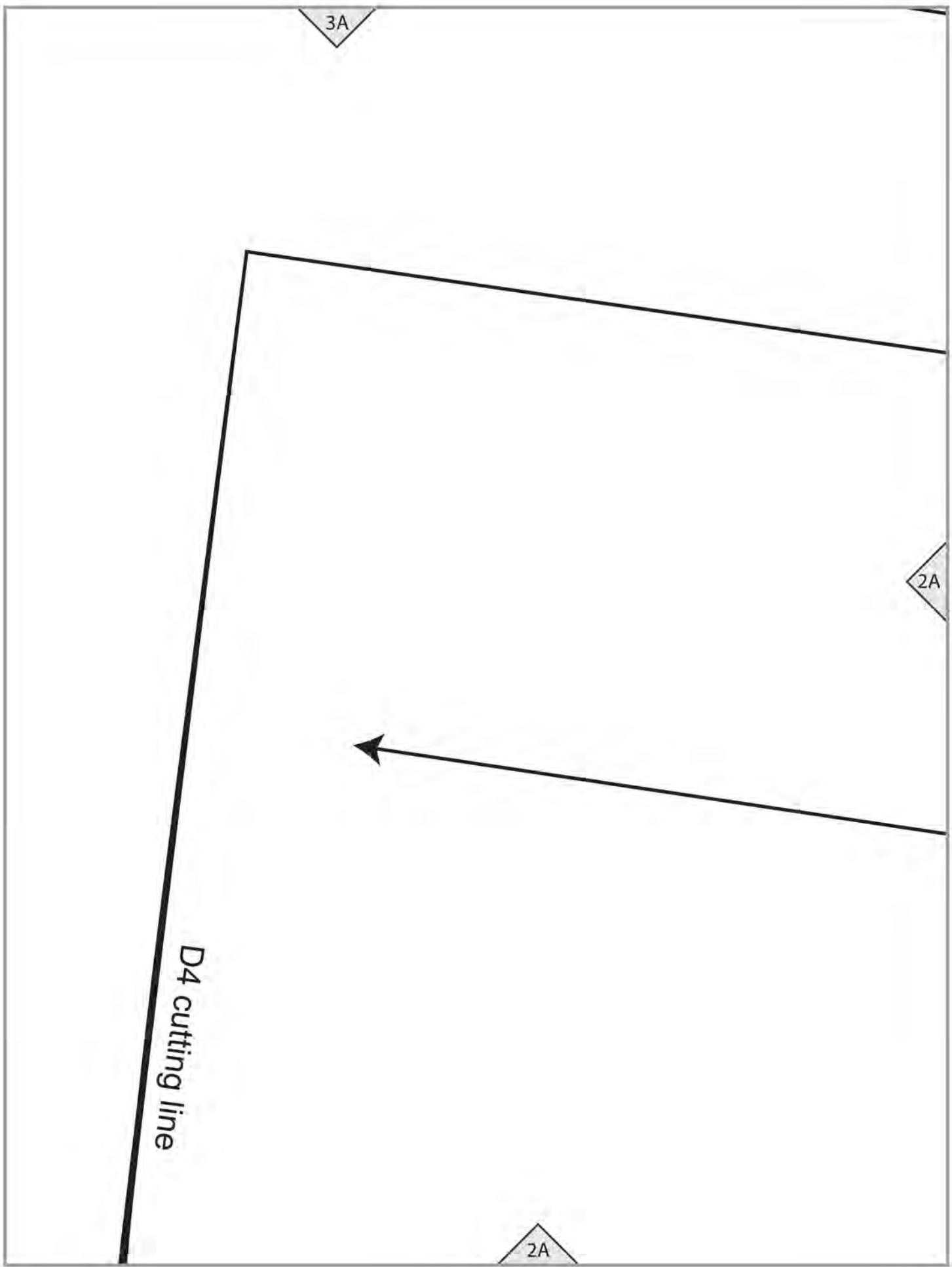
WOVENS GRAINLINE



3l

2H

4l



3A

2A

2A

D4 cutting line

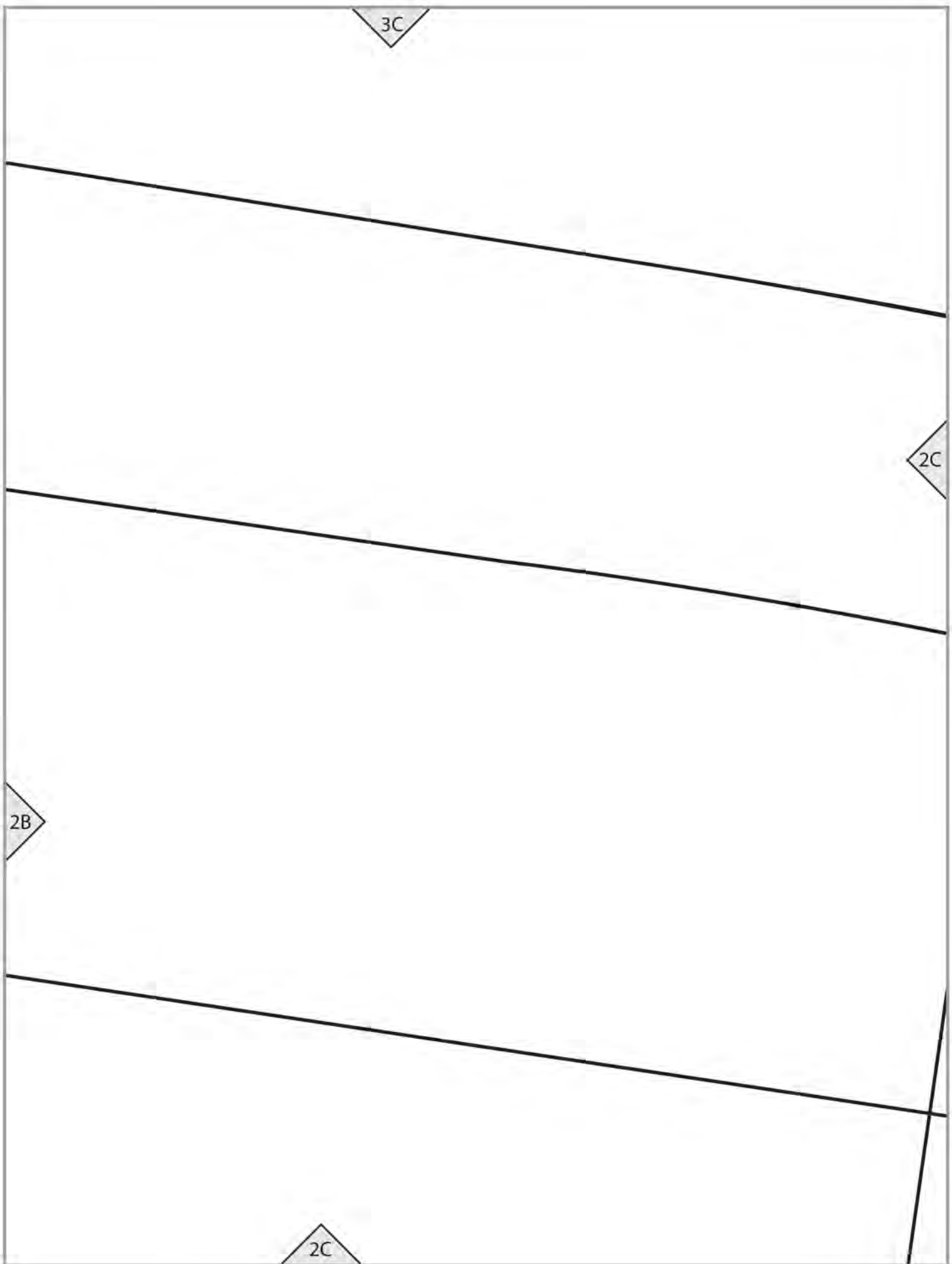
3B

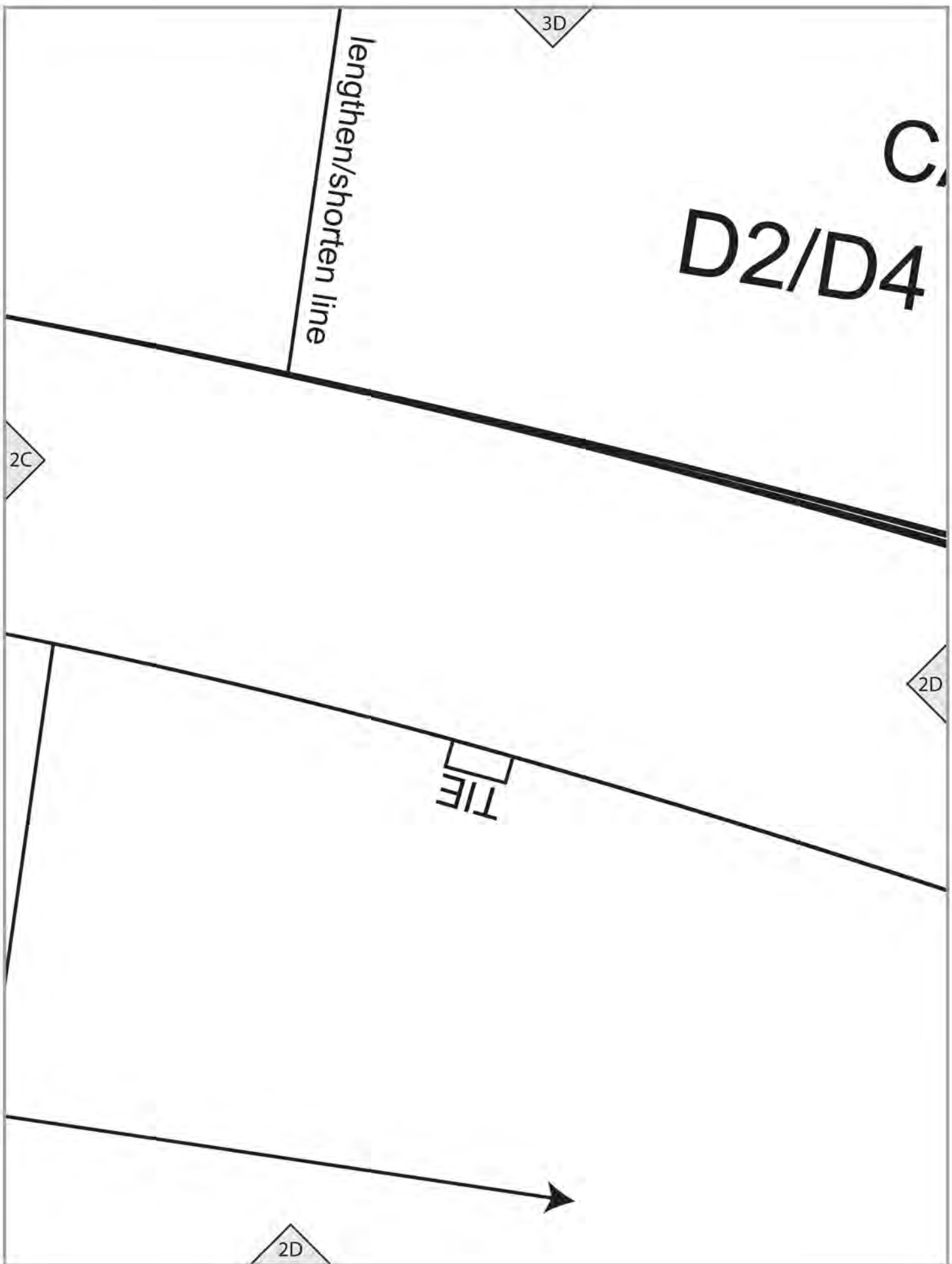
2A

2B

**GRAINLINE**

2B





3E

# ARDIGAN (D) FRONT FACING

Cut 2 of fabric

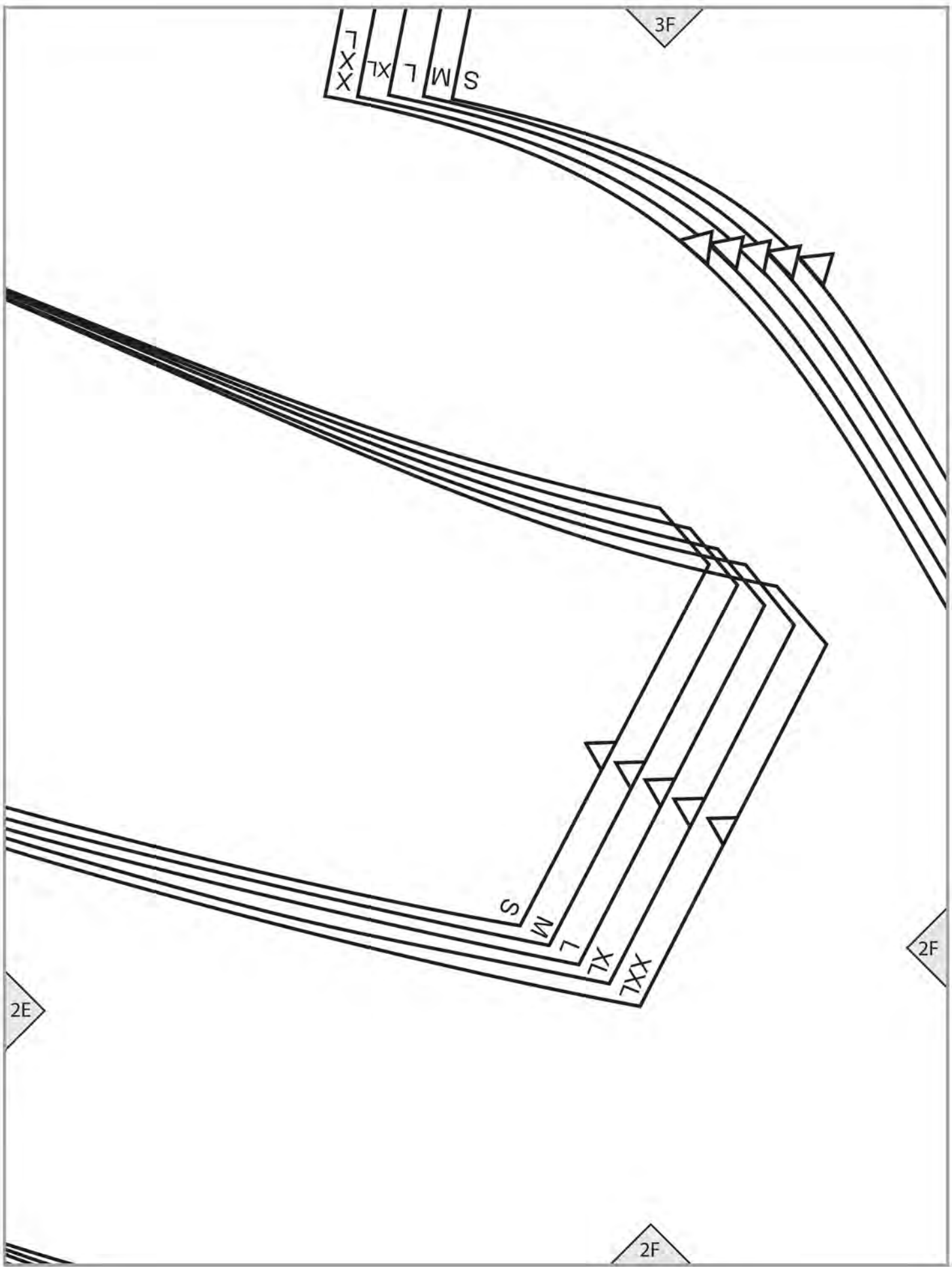
Cut 2 of interfacing

2D

2E

2E





S  
M  
L  
TX  
XXX

3F

2E

2F

2F

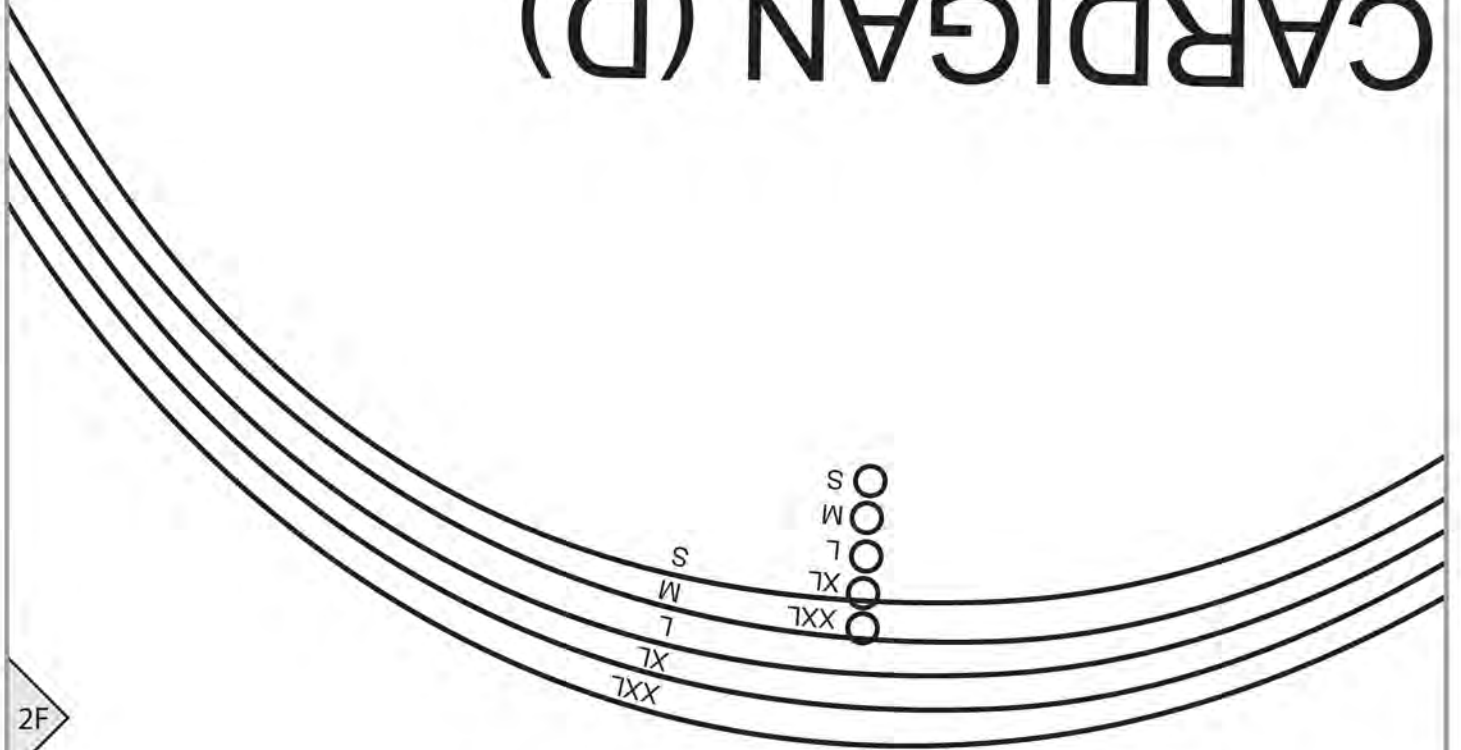
S  
M  
L  
TX  
XXX

3G

Cut 2

# SLEEVE

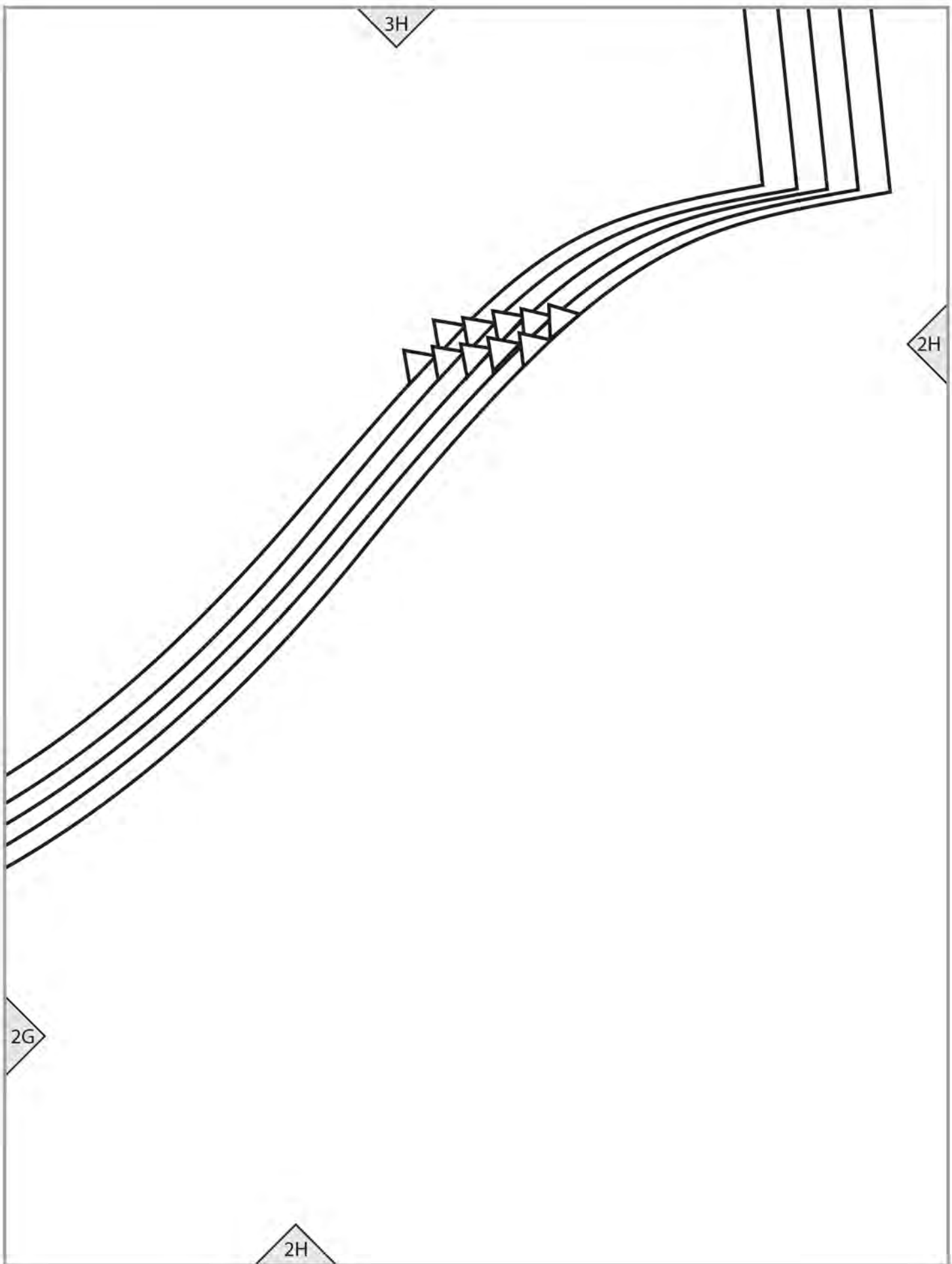
# CARDIGAN (D)



2F

2G

2G



3I

2H

KNIT GRAINLINE



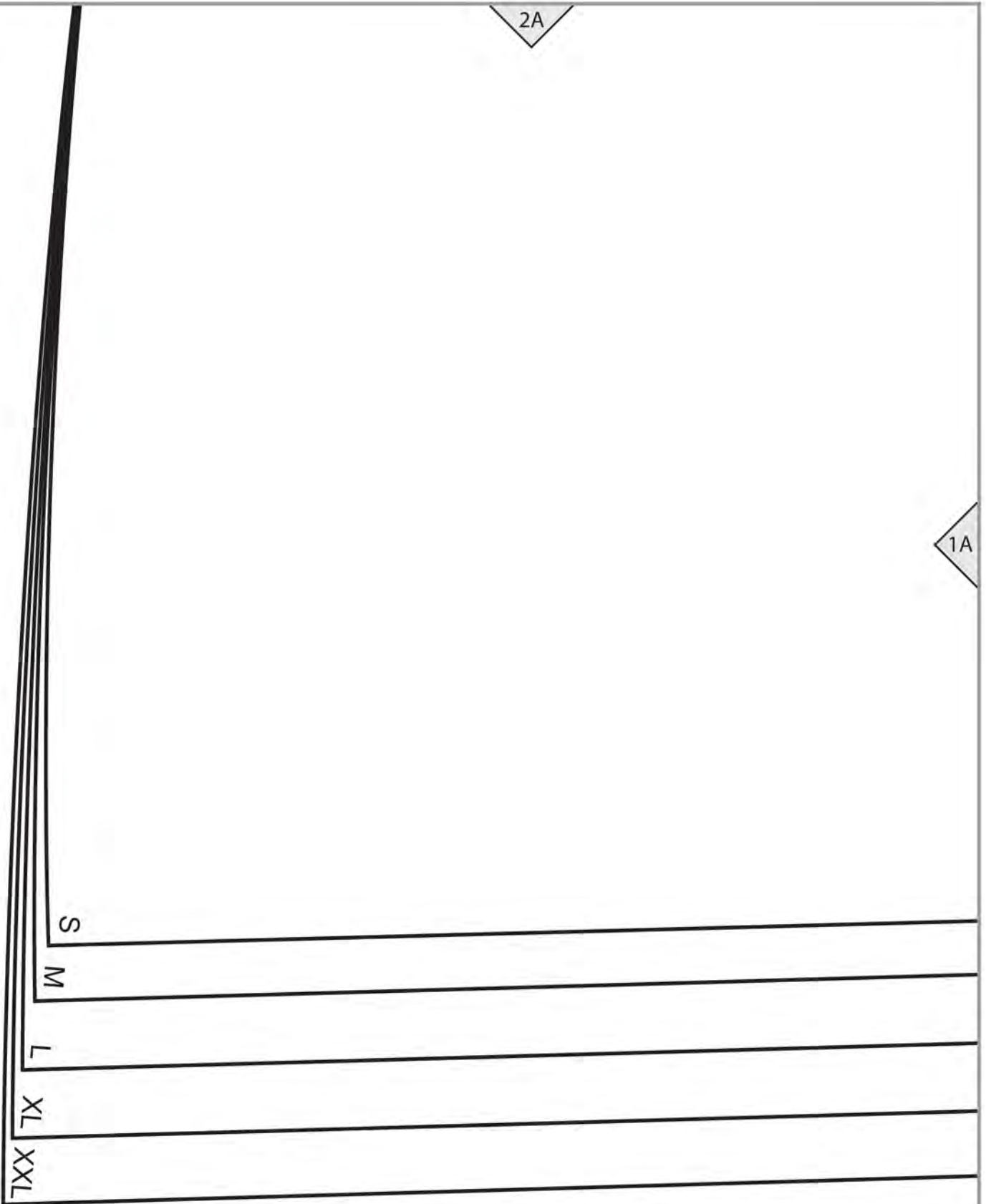
19

2I

2A

1A

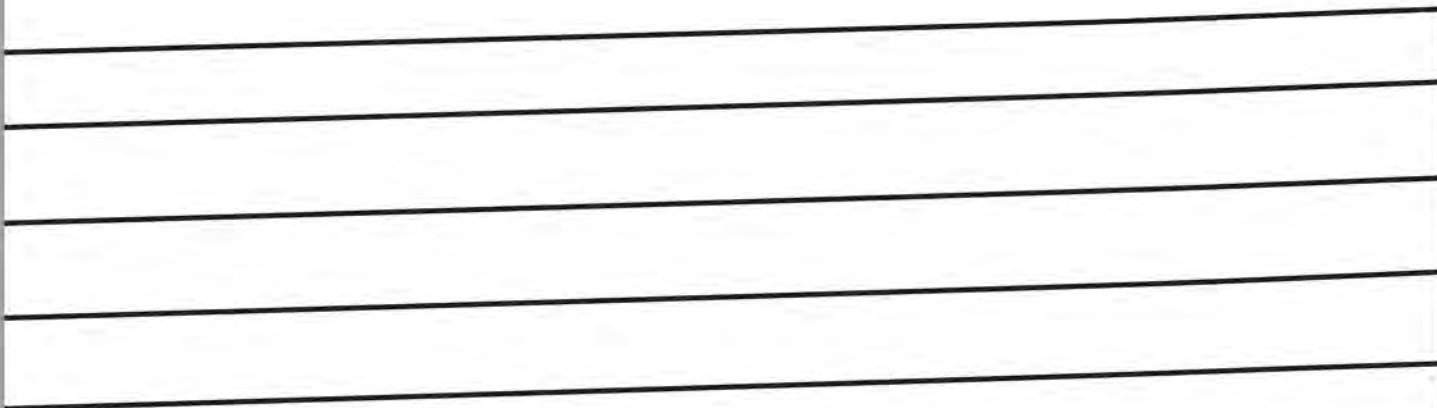
TX  
TX  
7  
W  
S

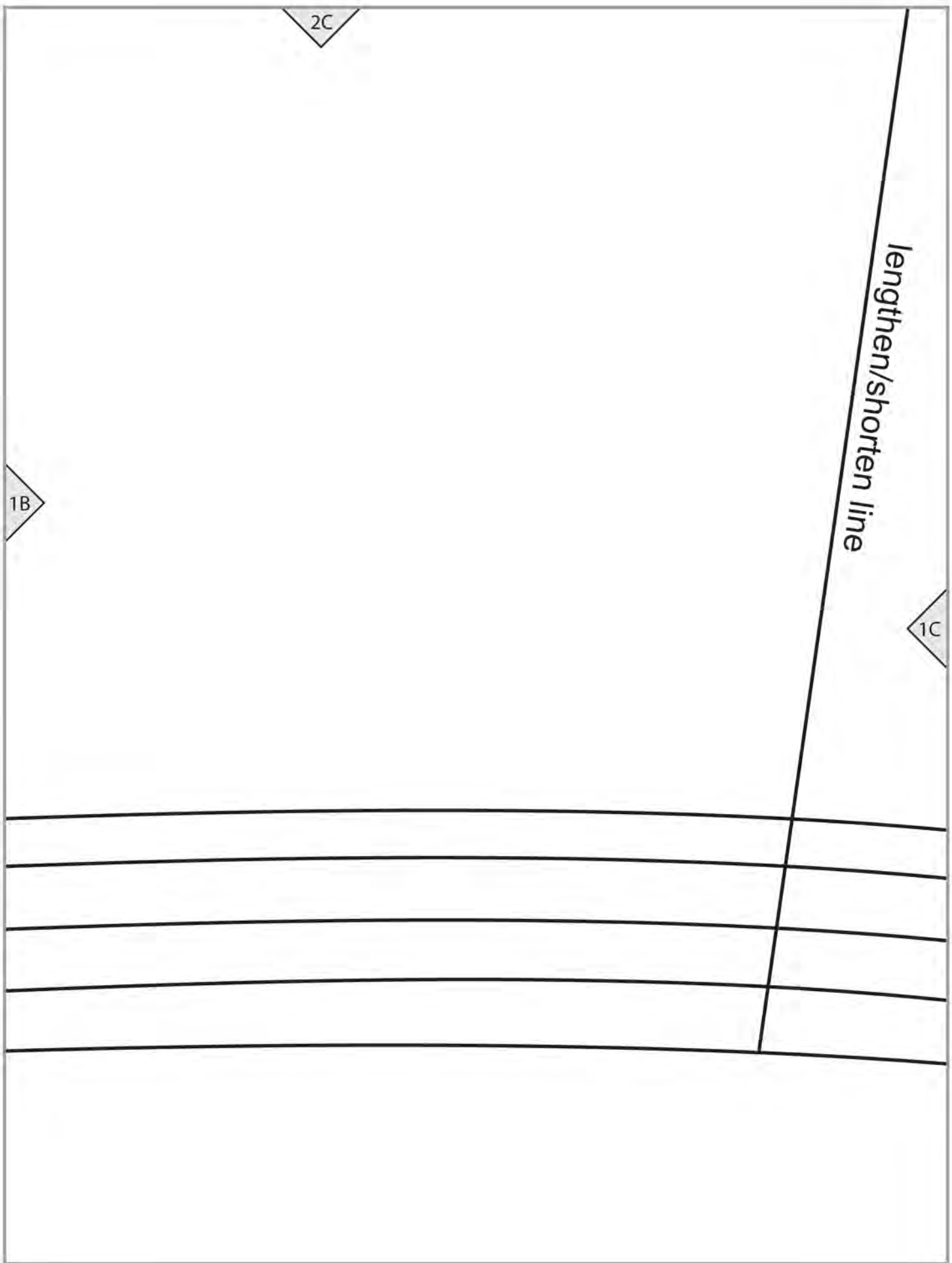


2B

1A

1B





2D

1

1D

1C

S

M

L

XL

XXL



# CARDIGAN (D)

## D1/D4

## FRONT

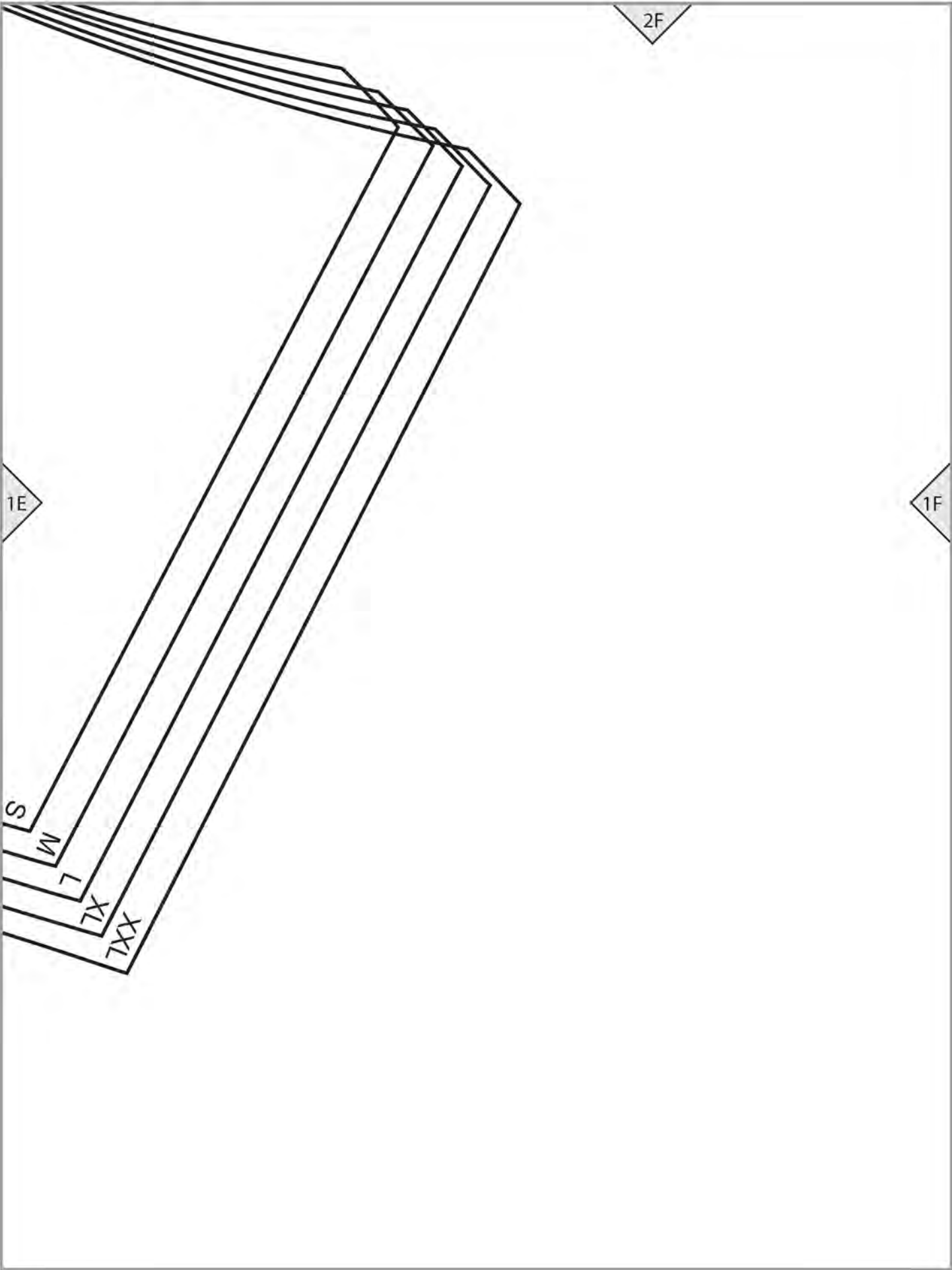
## Cut 2

2E

1E

1D

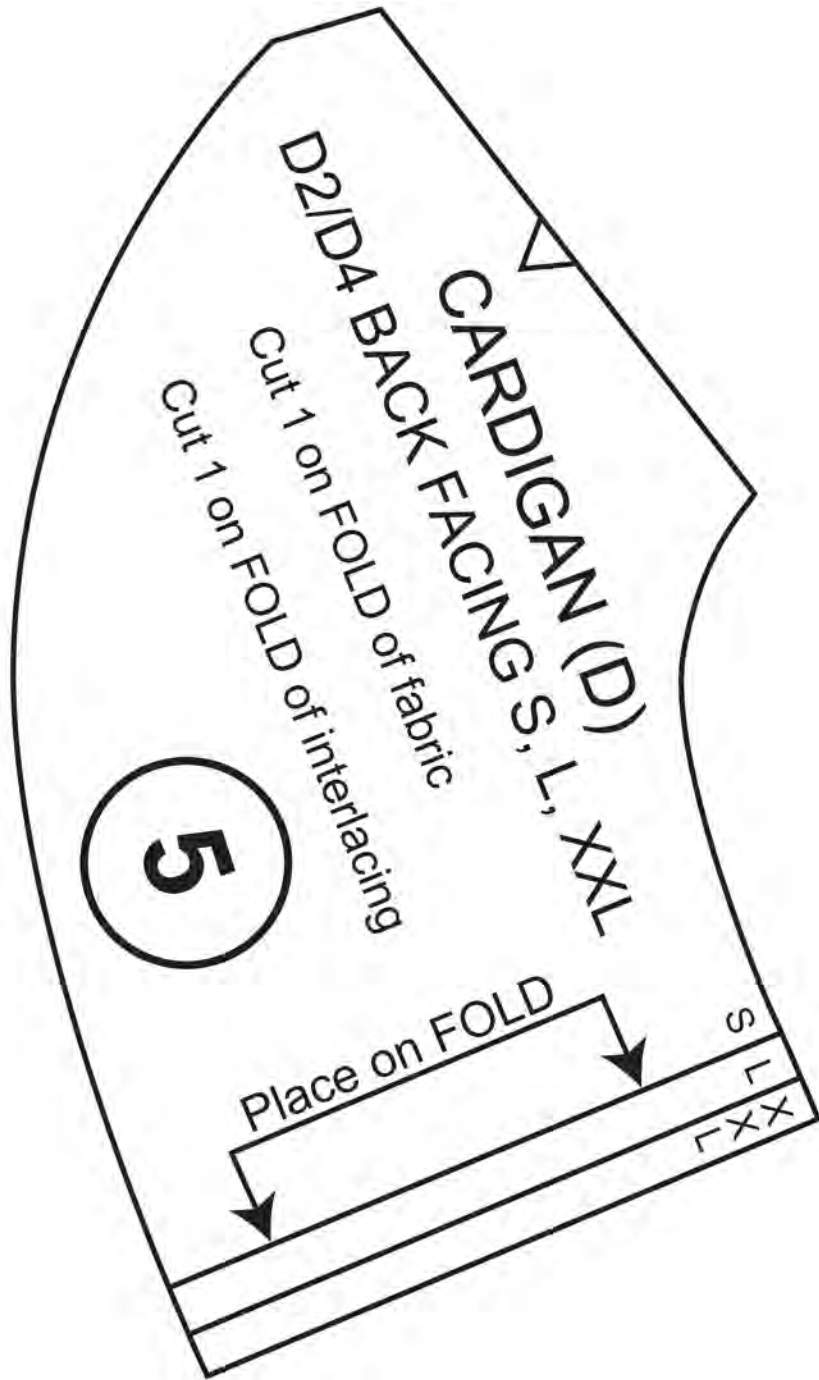




2G

1F

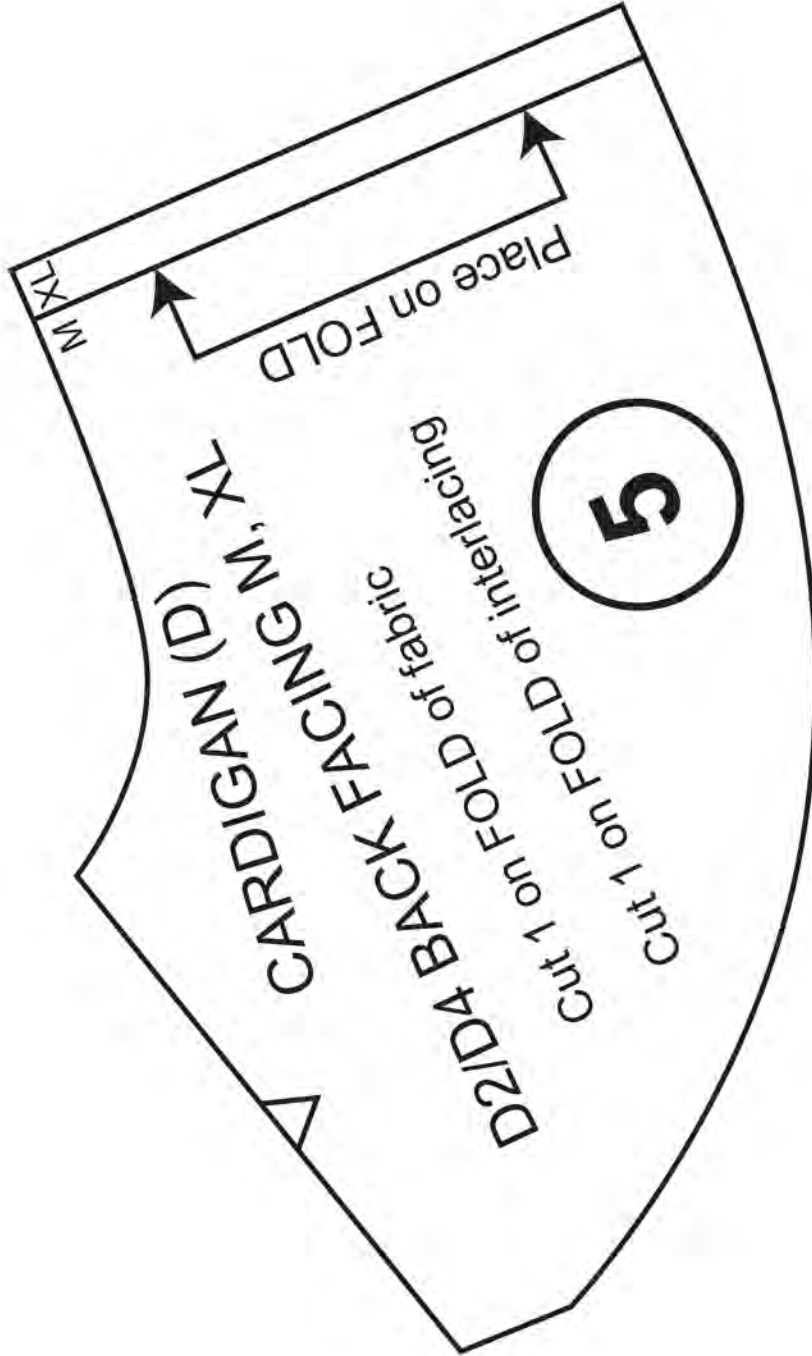
1G



2H

1G

1H



# D4 TIE Cut 2