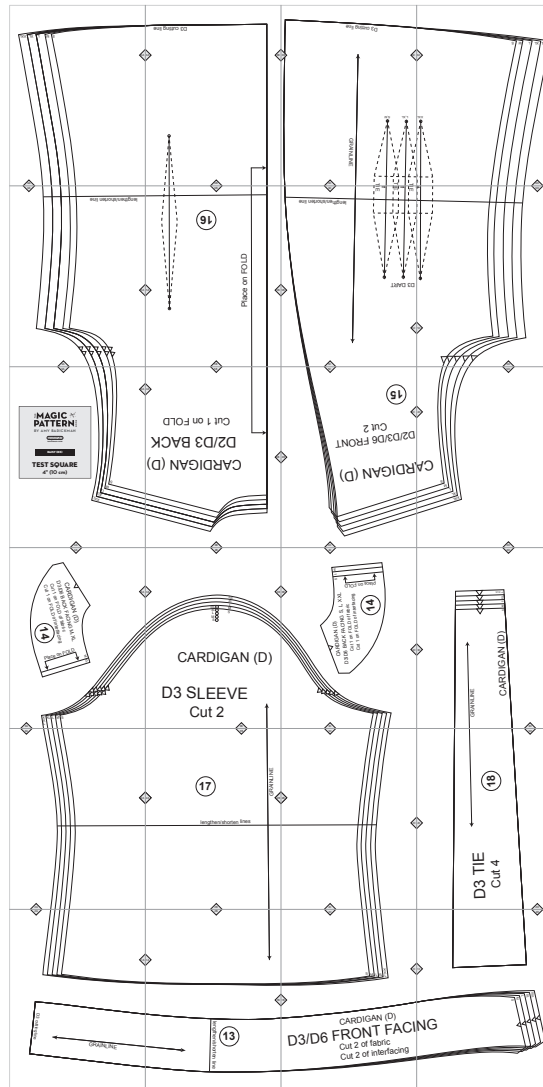


D3. Daisy



Copyright ©2014 by Amy Barickman

All rights reserved. Amy Barickman's patterns may be printed for personal use, but may not be otherwise reproduced—mechanically, electronically, or by any other means, including photocopying—without written permission of the publisher.

Sewing pattern designs for *The Magic Pattern Book* by Amy Barickman are intended for personal use only, and not as the basis for commercial manufacturing.

Workman Publishing, New York • workman.com

TXX

TX

T

W

S

6A

6A

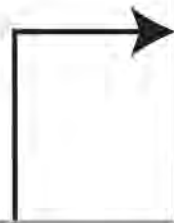
D3 cutting line

6A

6B



6B



D3 cutting line

6B

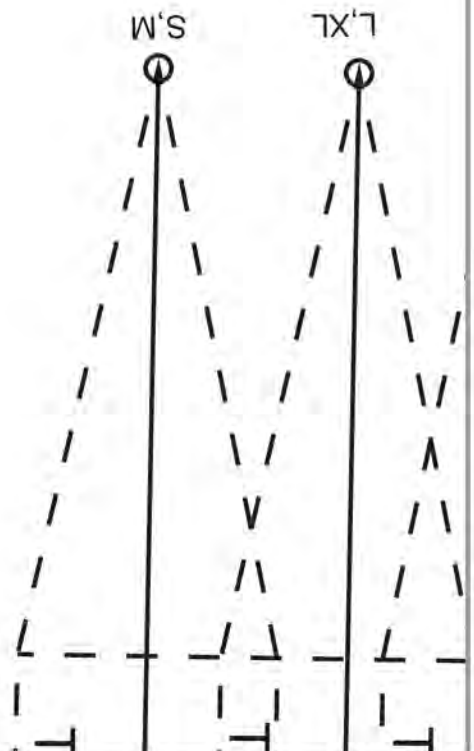
6C

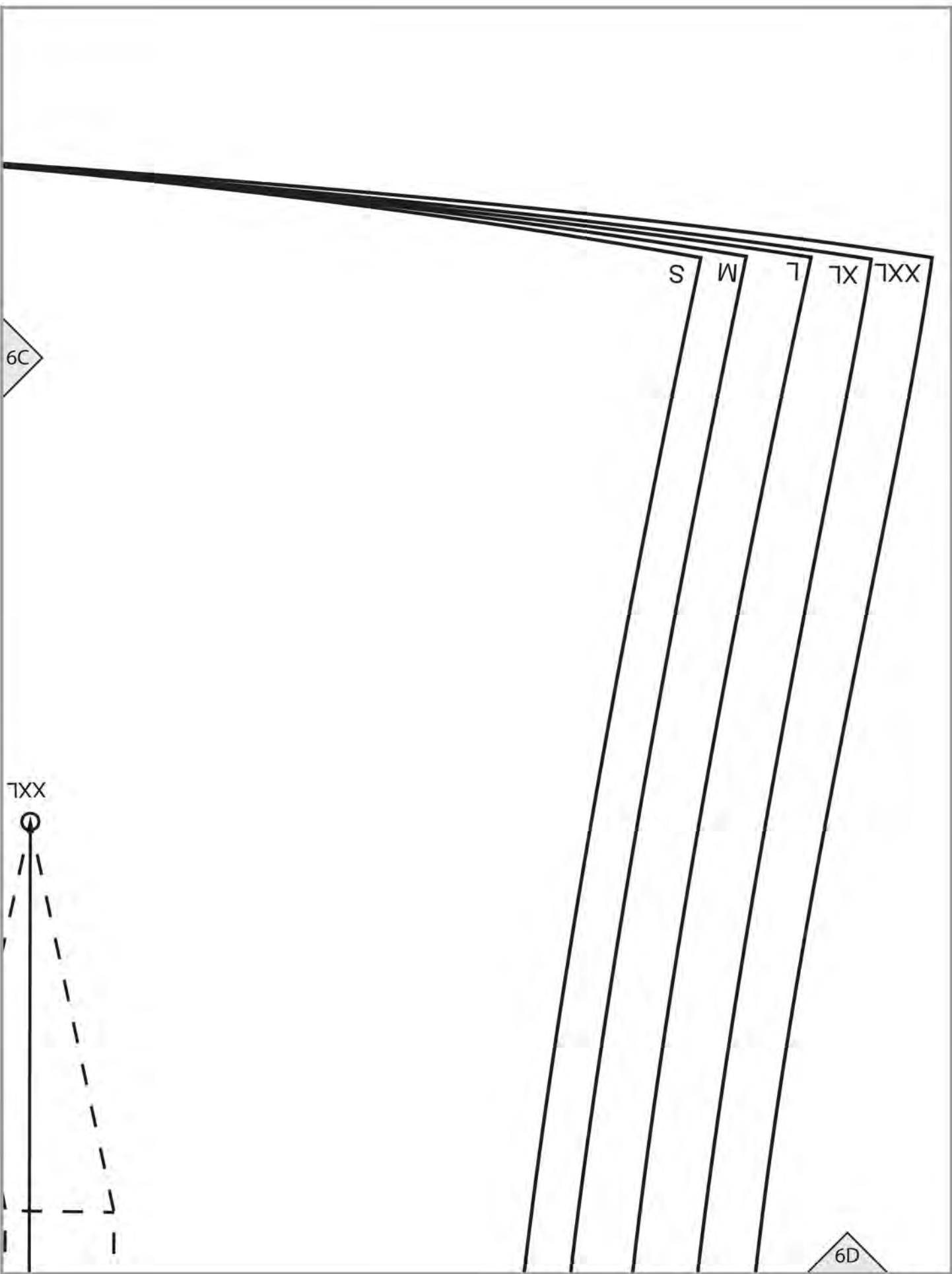
GRAINLINE

S.M

L.XL

6C



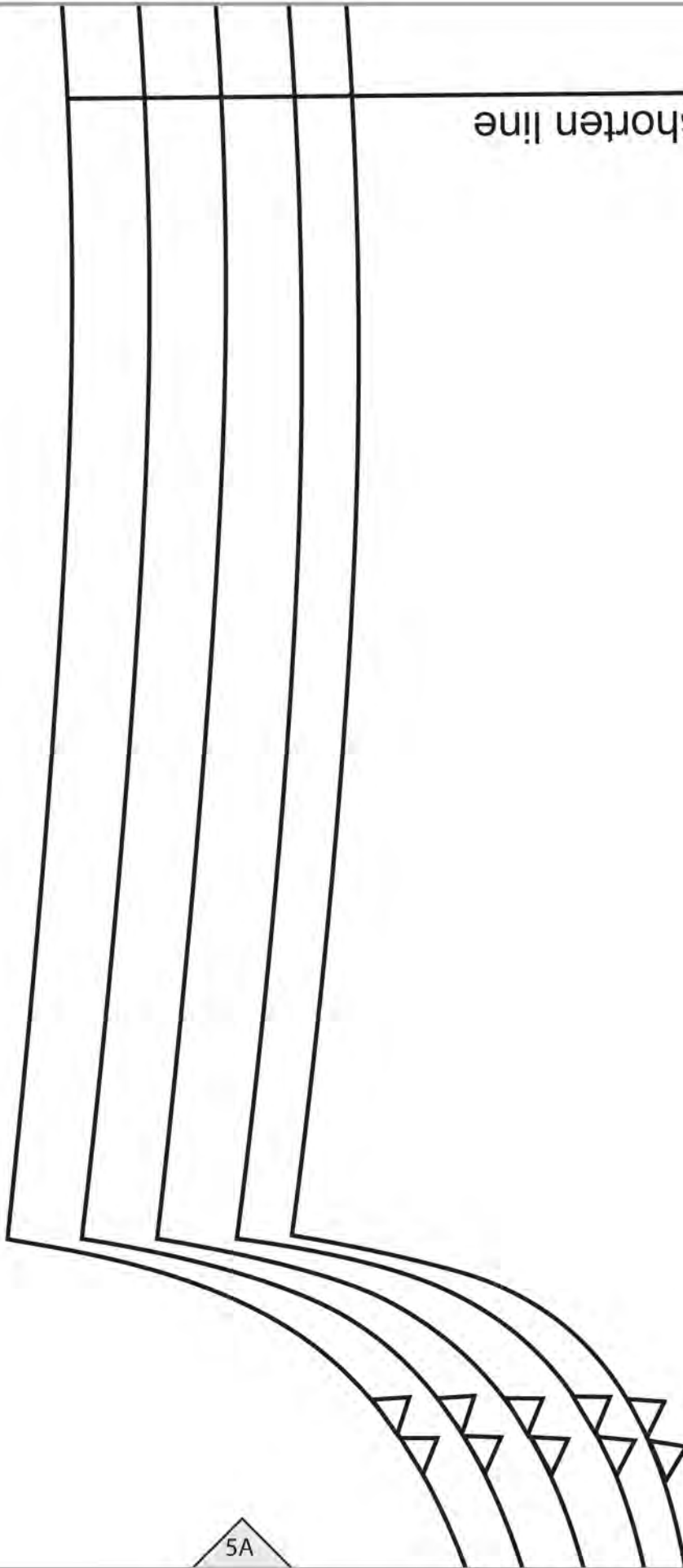


6A

lengthen/shorten line

5A

5A



6B

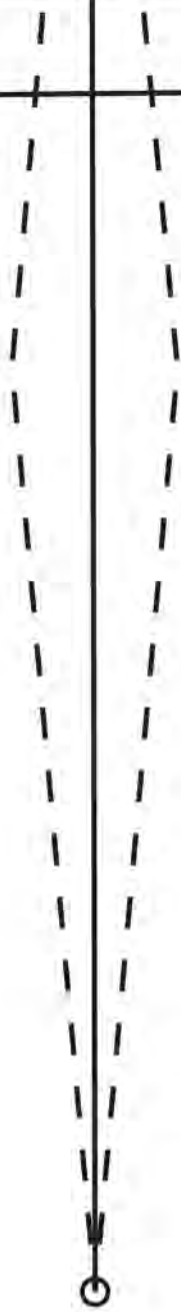
16

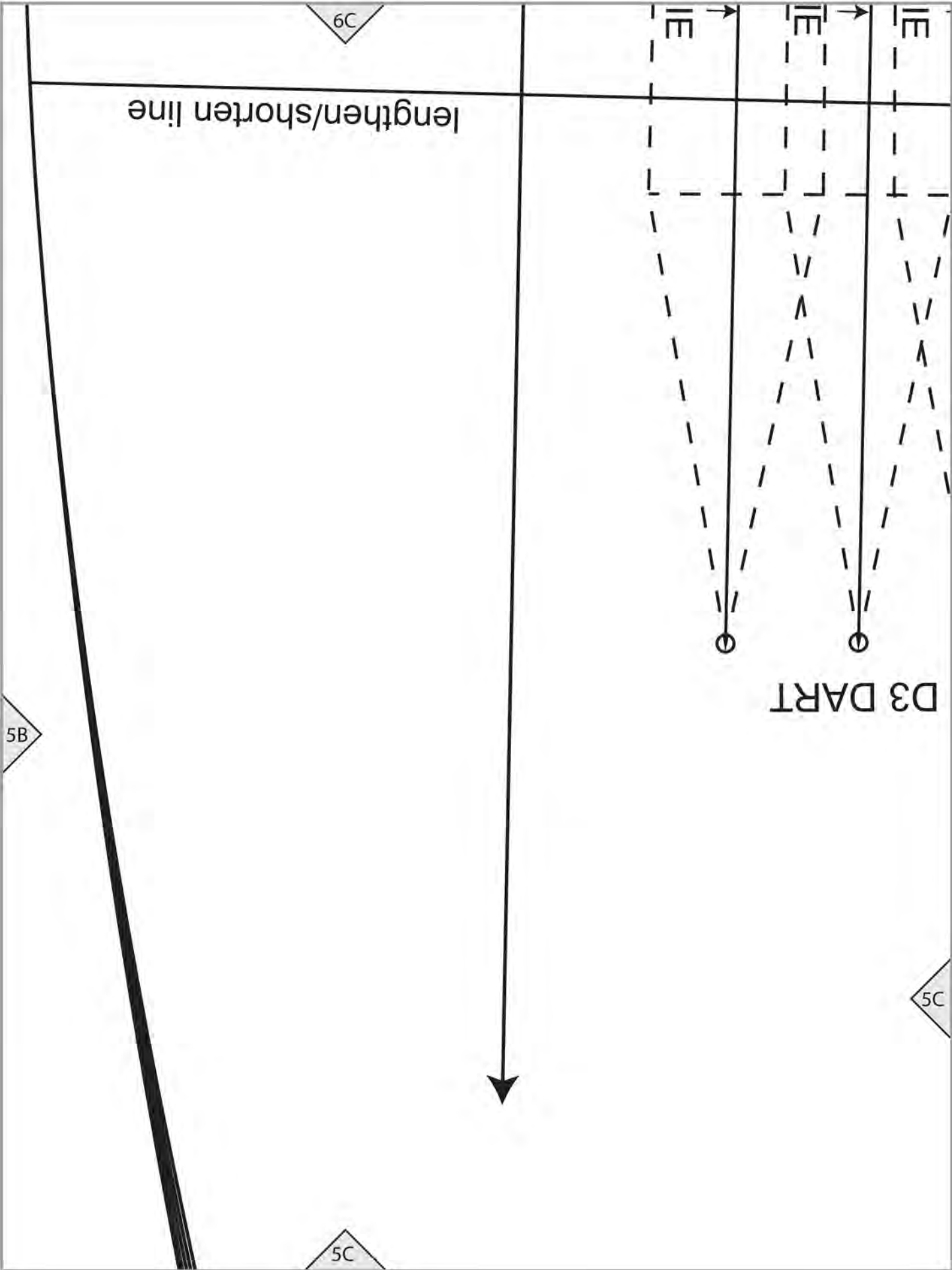
Place on FOLD

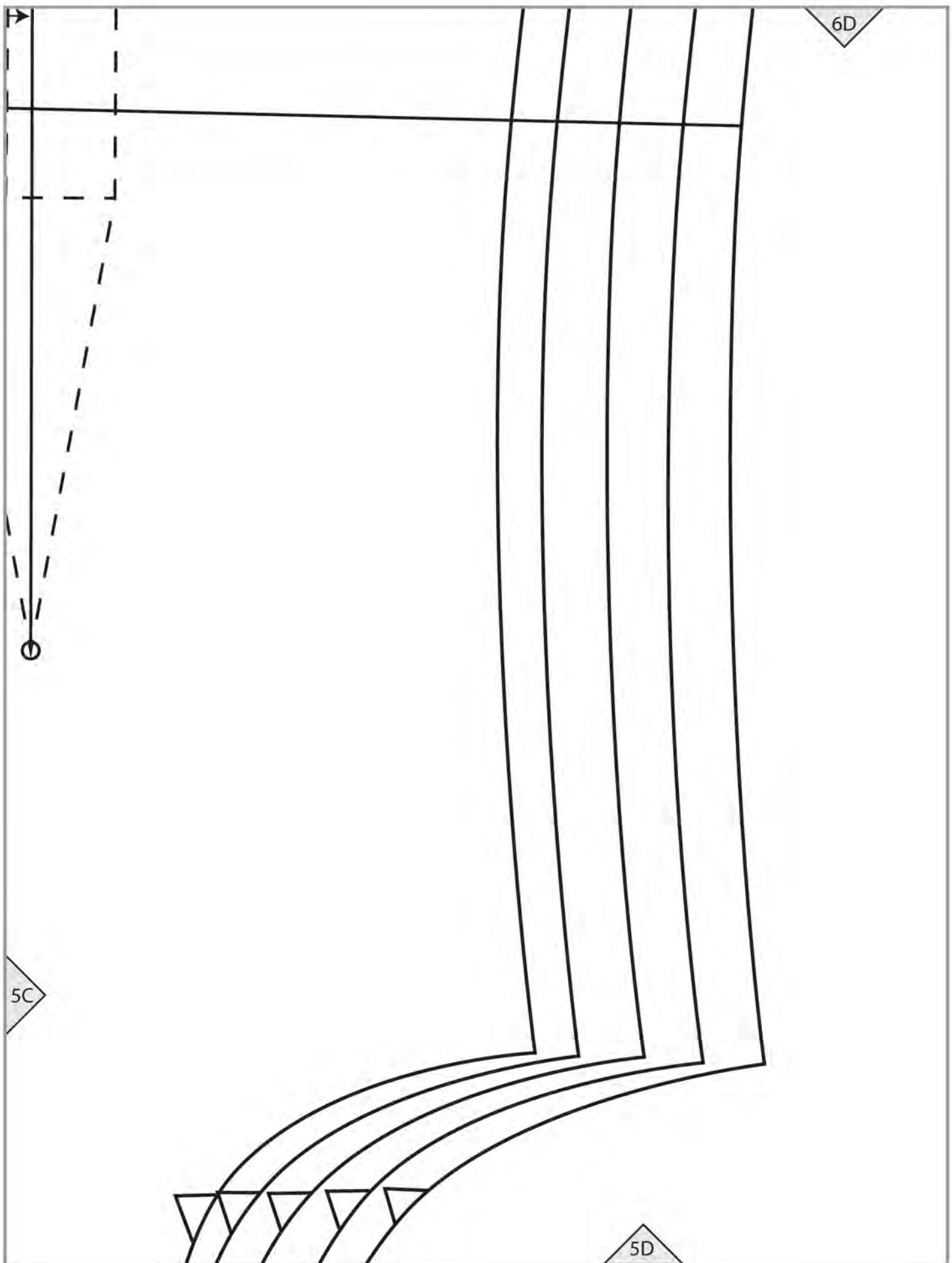
5A

5B

5B







5C

5D

6D

5A

4A

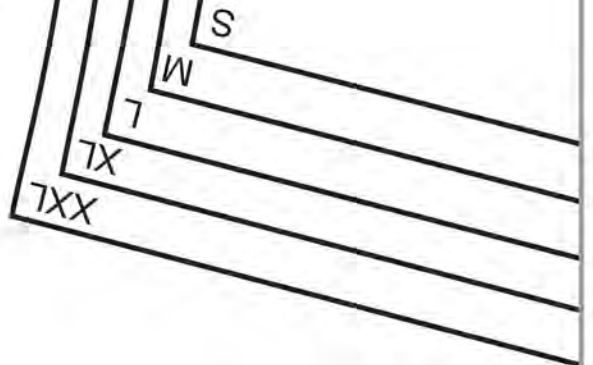
THE **MAGIC**  **PATTERN** BOOK

BY AMY BARICKMAN

workman
workman.com

DAISY (D3)

TEST SQUARE
4" (10 cm)



4A

5B

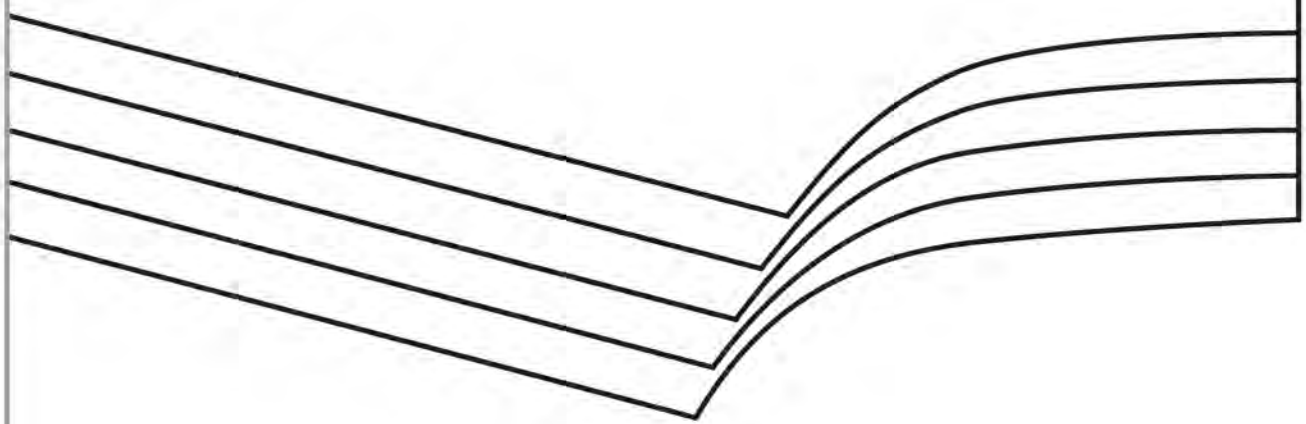
4A

Cut 1 on FOLD



4B

CARDIGAN (D) D2/D3 BACK



4B

15

D2/D3/D6 FRONT
Cut 2

RDIGAN (D)

5C

4C

4B

4C



5D

4C

CA

S

M

T

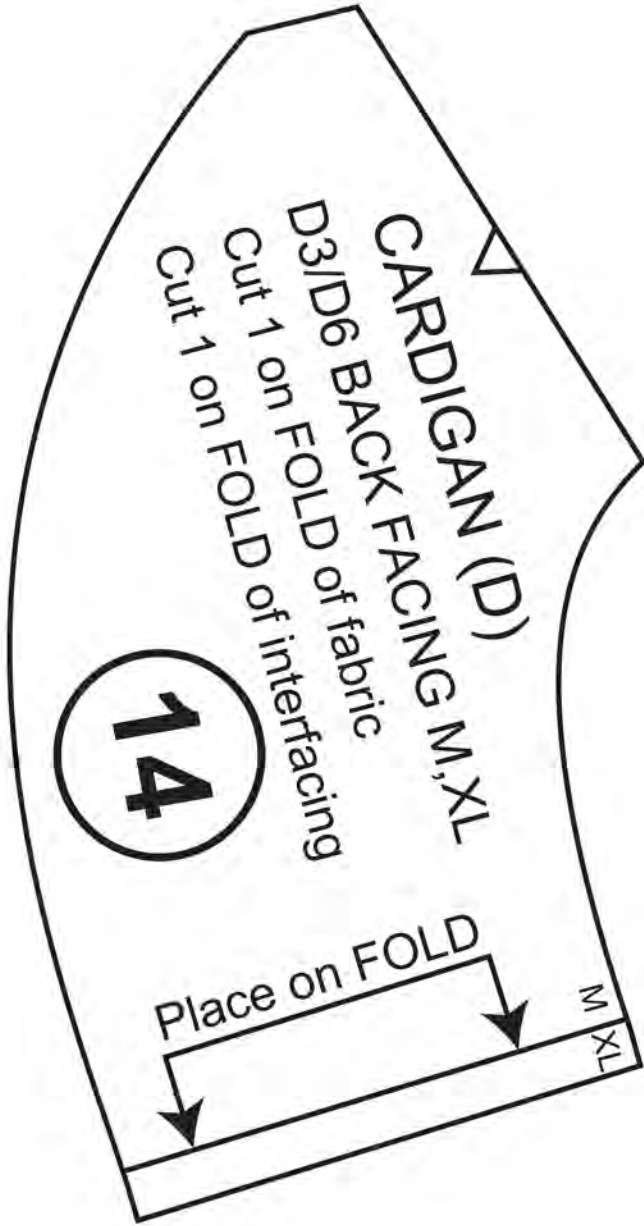
TX

TXX

4D

4A

3A

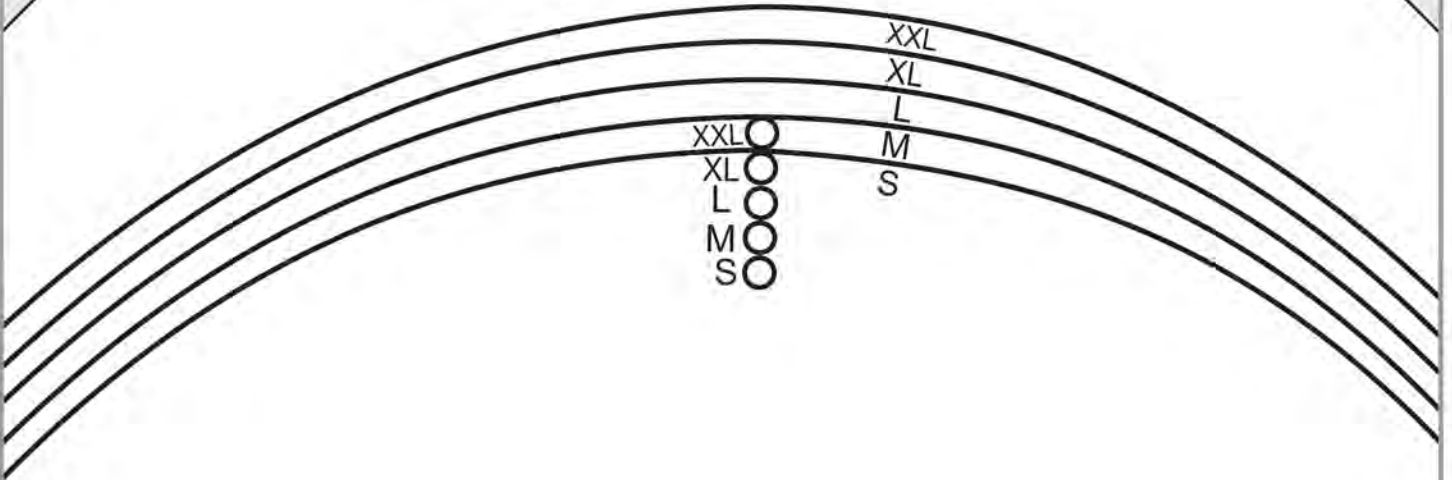


3A

4B

3A

3B



CARDIGAN (D)

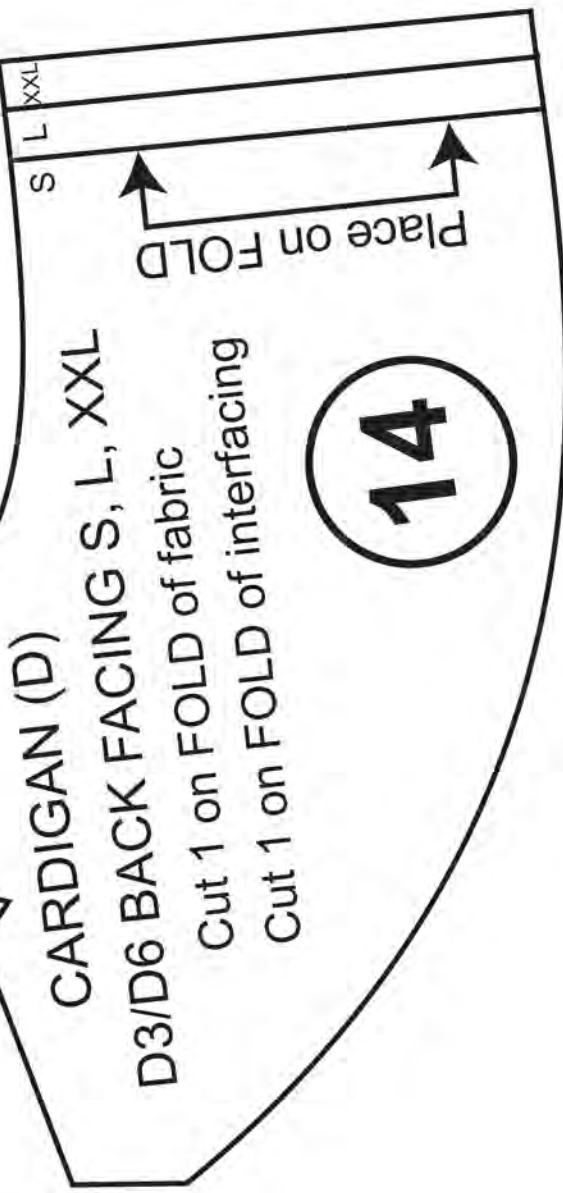
D3 SLEEVE

Cut 2

3B

4C

3B



CARDIGAN (D)
D3/D6 BACK FACING S, L, XXL
 Cut 1 on FOLD of fabric
 Cut 1 on FOLD of interfacing

14

3C

3C

4D

XXL
XL
L
M
S

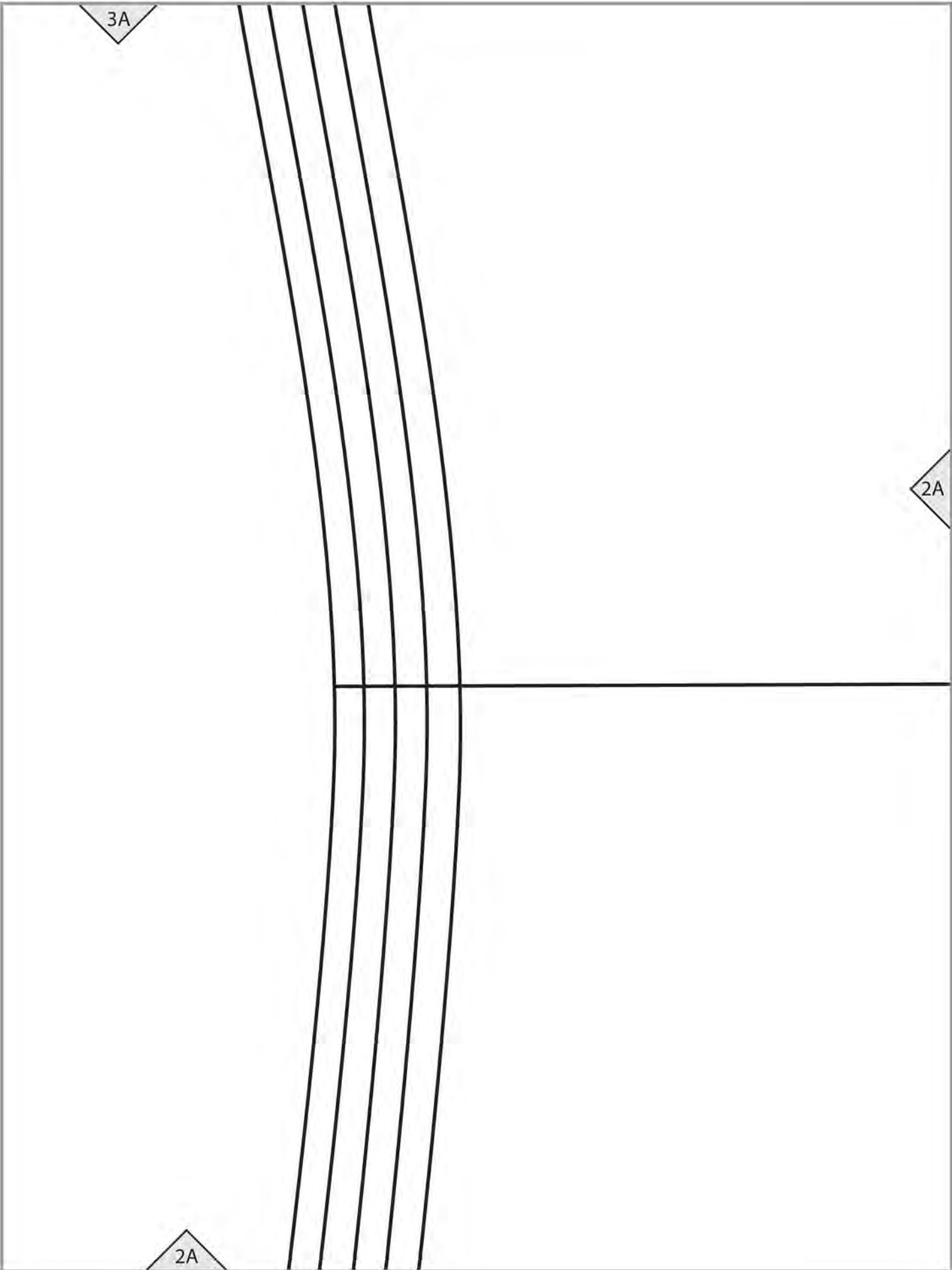
CARDIGAN (D)



GRAINLINE

3C

3D



17

3B

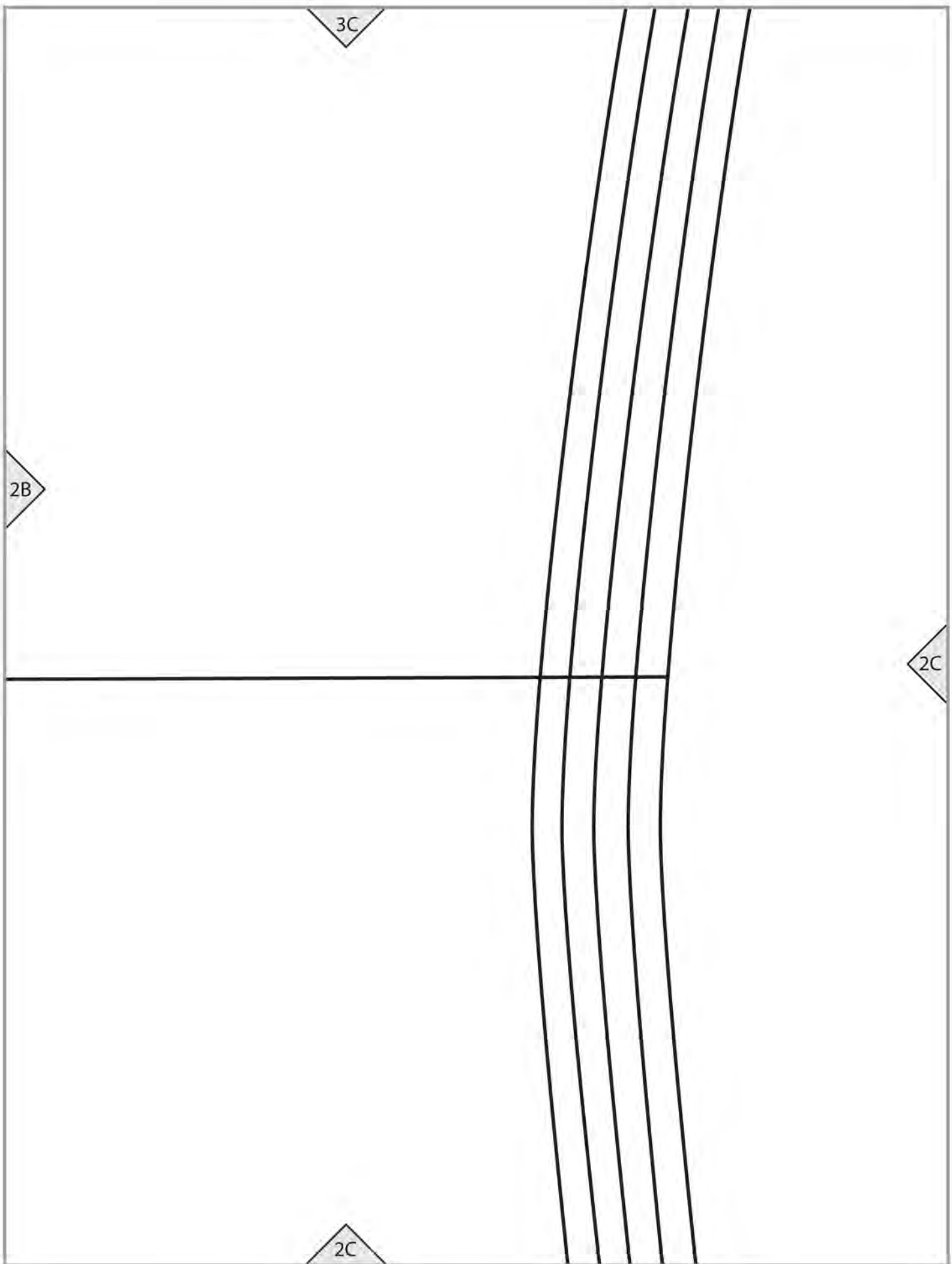
2A

GRAINLINE

2B

lengthen/shorten line

2B



2C

3D

D3 TIE
Cut 4

18



2D

2A

1A

D3 cutting line

GRAINLINE



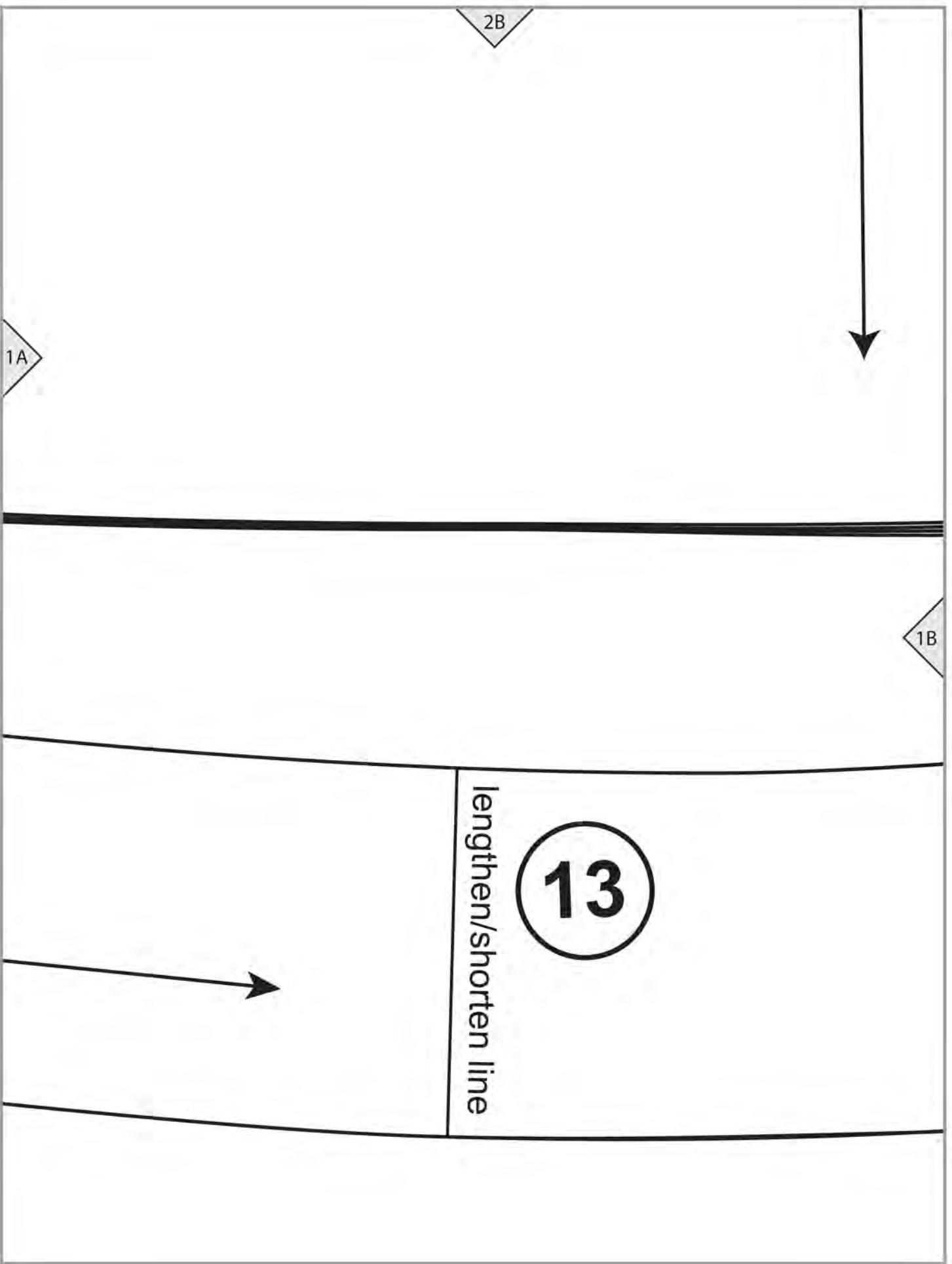
2B

1A

1B

lengthen/shorten line

13



2C

S M L XL

XXL

1C

1B

CARDIGAN (D)
D3/D6 FRONT FACI

Cut 2 of fabric

Cut 2 of interfacing

2D

1C

NG

S

M

L

XL

XXL

