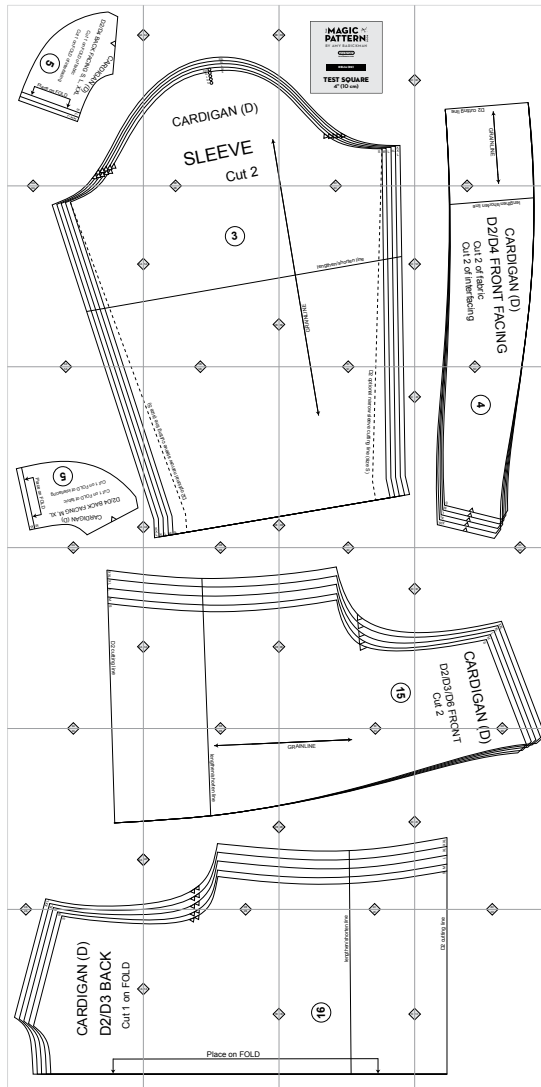


D2. Delia

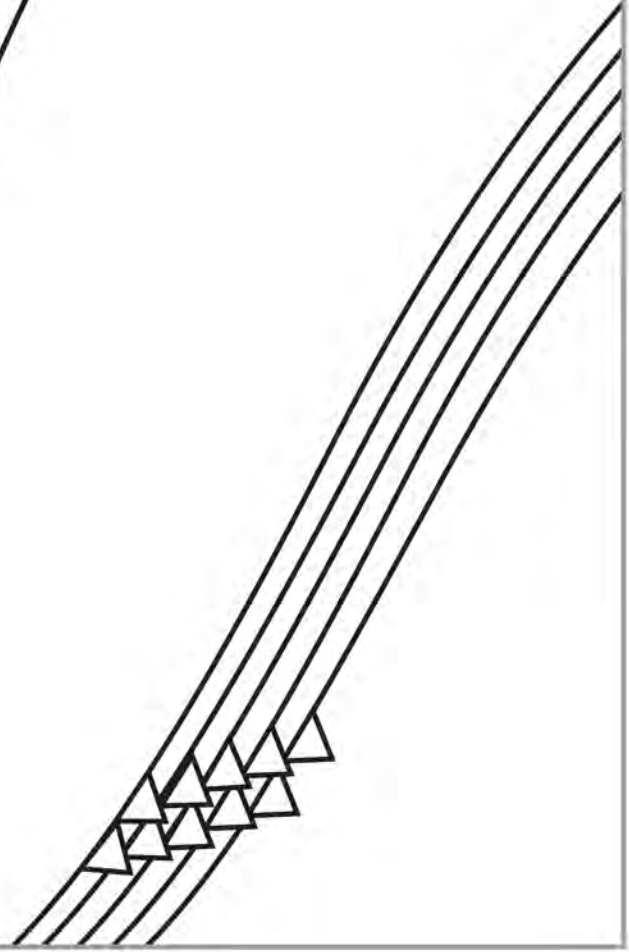
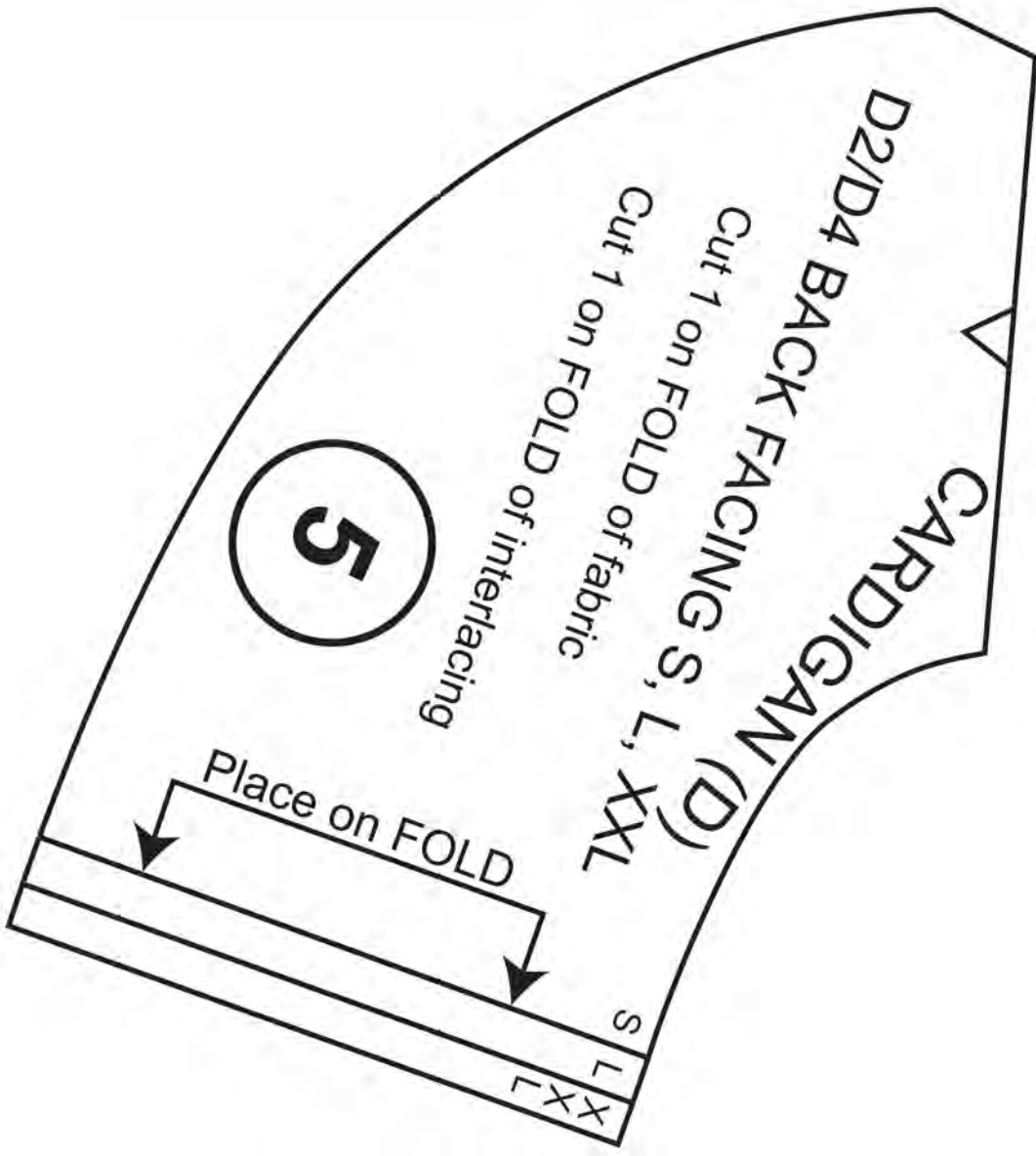


Copyright ©2014 by Amy Barickman

All rights reserved. Amy Barickman's patterns may be printed for personal use, but may not be otherwise reproduced—mechanically, electronically, or by any other means, including photocopying—without written permission of the publisher.

Sewing pattern designs for *The Magic Pattern Book* by Amy Barickman are intended for personal use only, and not as the basis for commercial manufacturing.

Workman Publishing, New York • workman.com



6A

6B



XXL
XL
L
M
S

XXL
XL
L
M
S

CARDIGAN (D)

SLEEVE

Cut 2

6B



6B

THE MAGIC PATTERN BOOK

BY AMY BARICKMAN

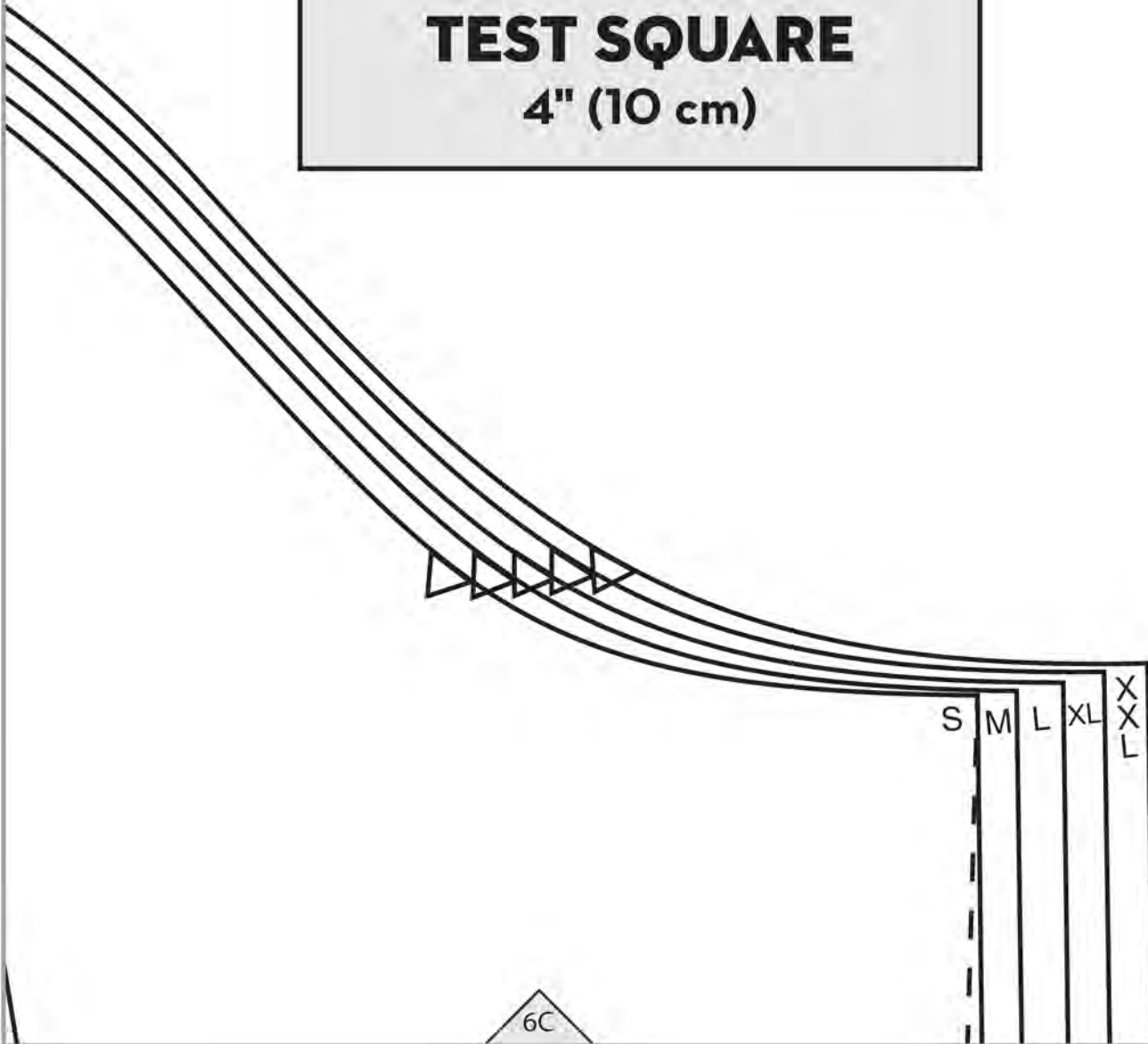
workman
workman.com

DELIA (D2)

TEST SQUARE

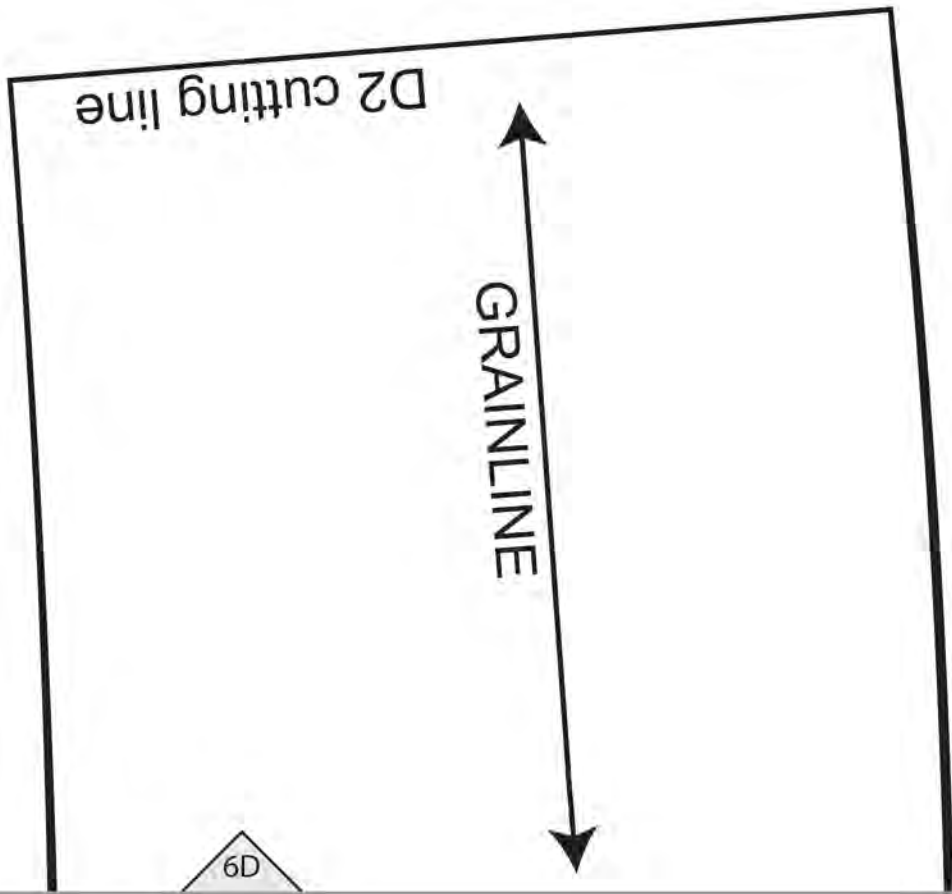
4" (10 cm)

6C

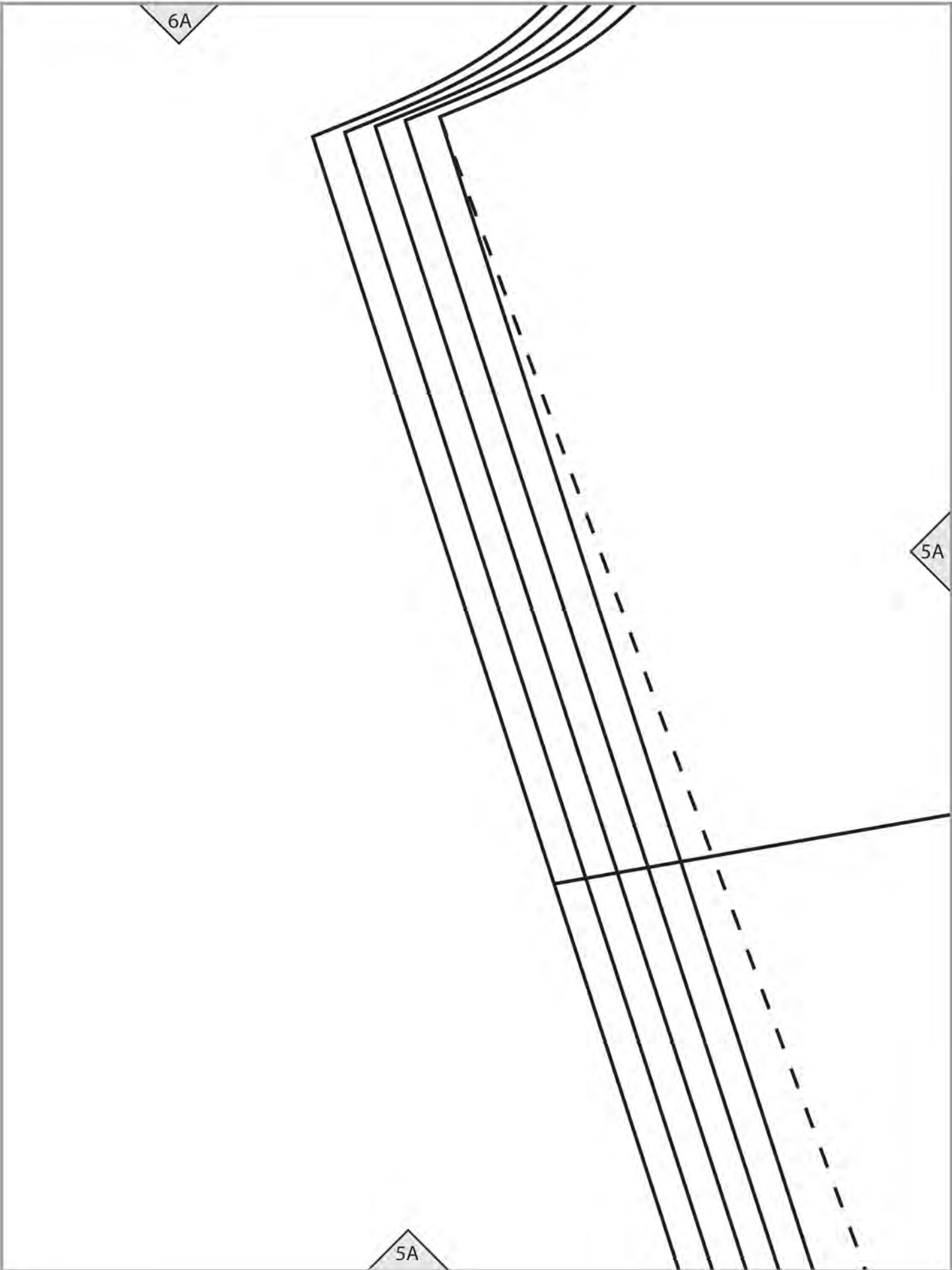


6C

6C



6D



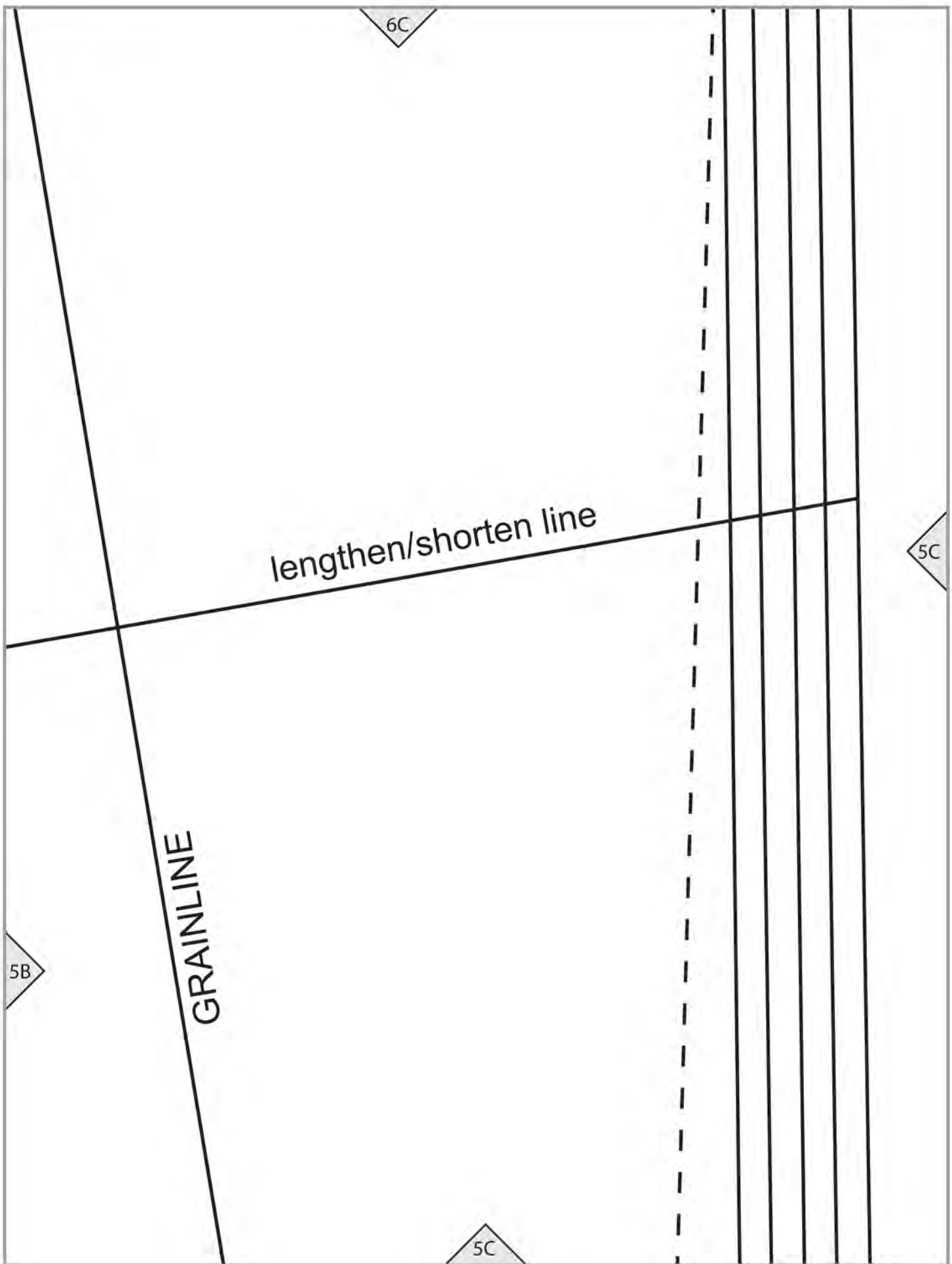
3

6B

5A

5B

5B



lengthen/shorten line

CARDIGAN (D)

D2/D4 FRONT FACING

Cut 2 of fabric

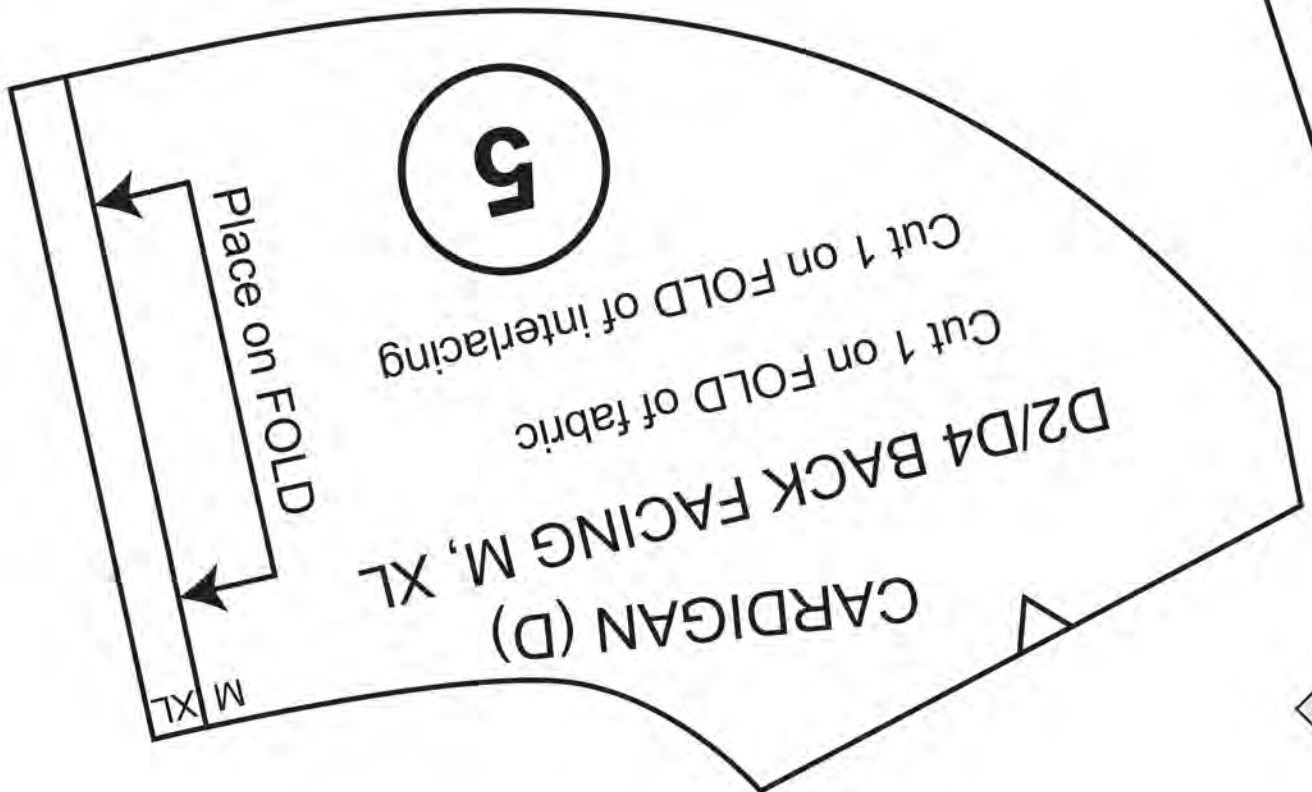
Cut 2 of interfacing

6D

5D

5C

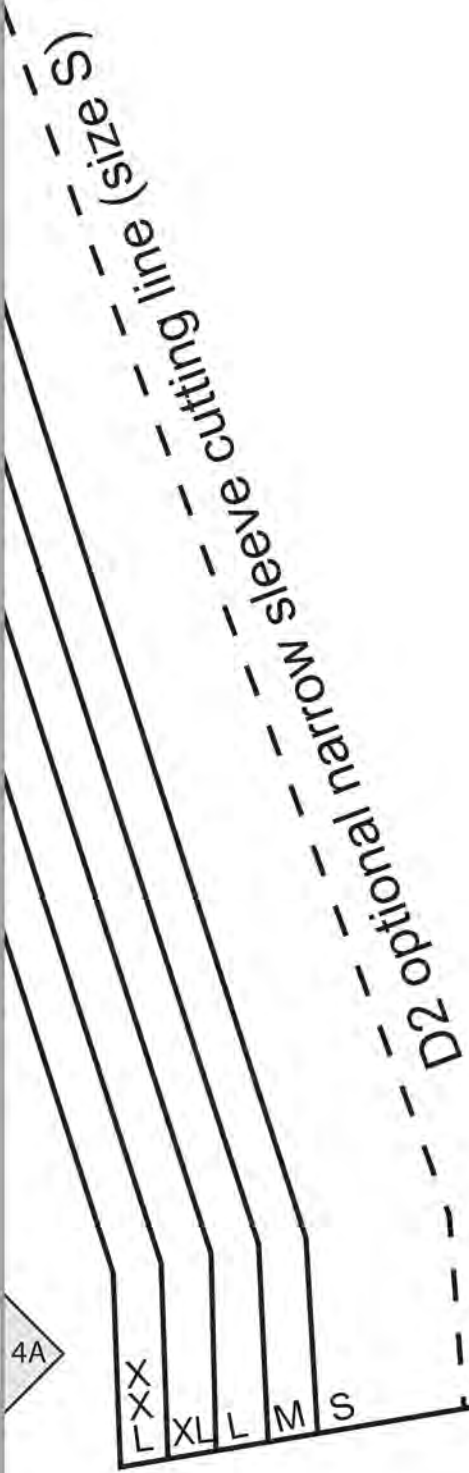
5A



4A

4A

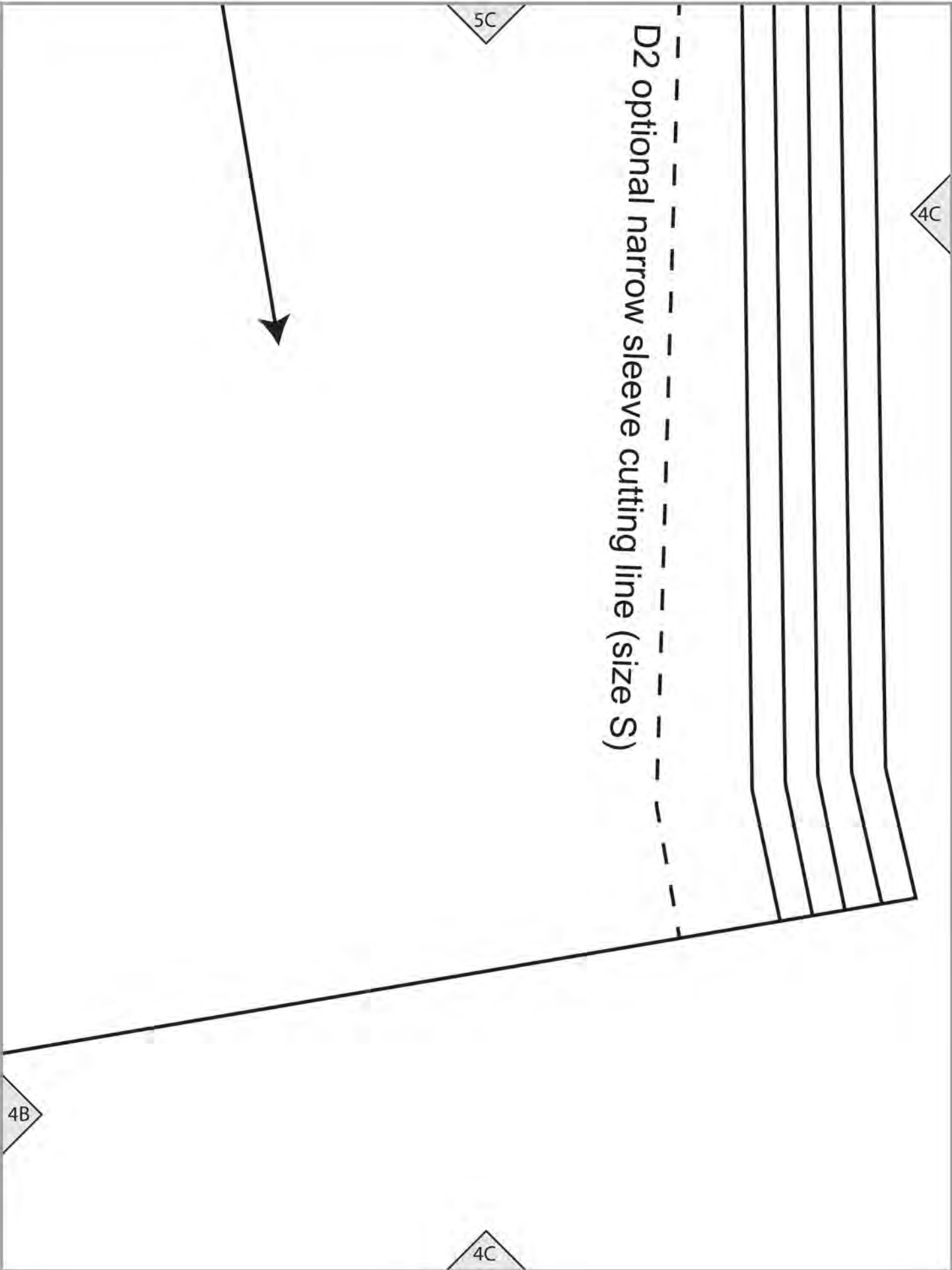
5B



4A

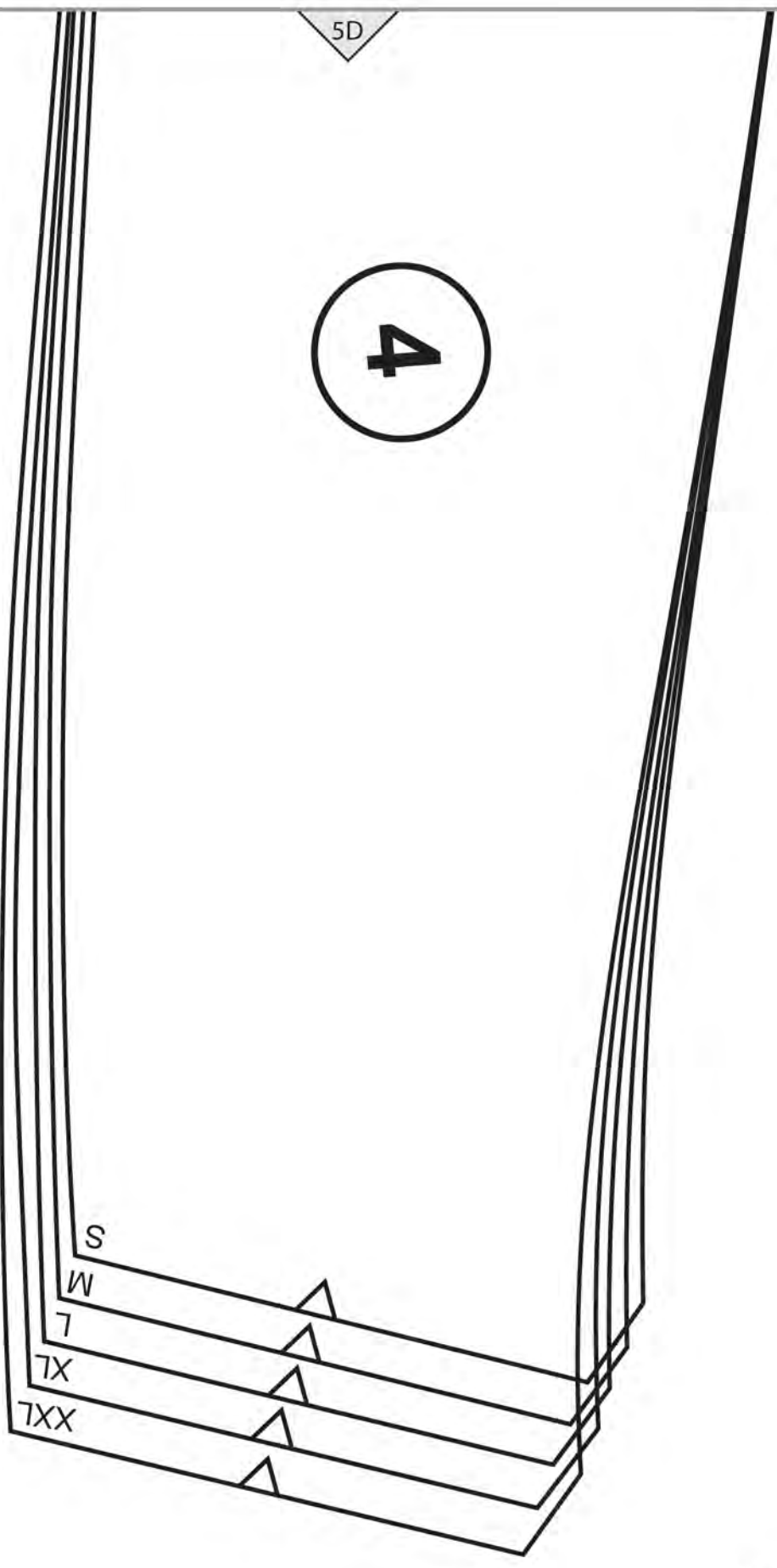
4B

4B



5D

4C



4D

4A

XXL

XL

L

M

S

D2 cutting line

3A

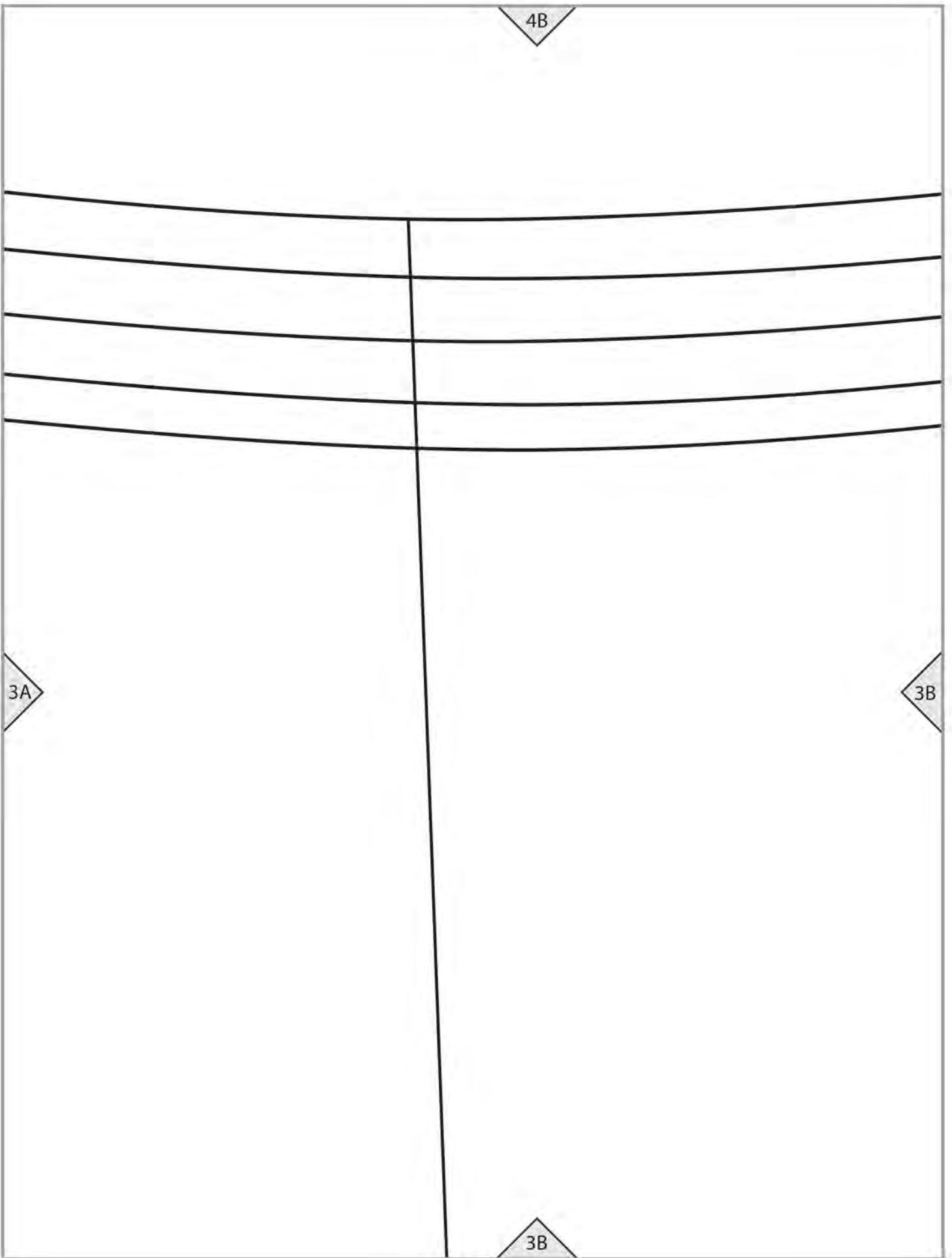
3A

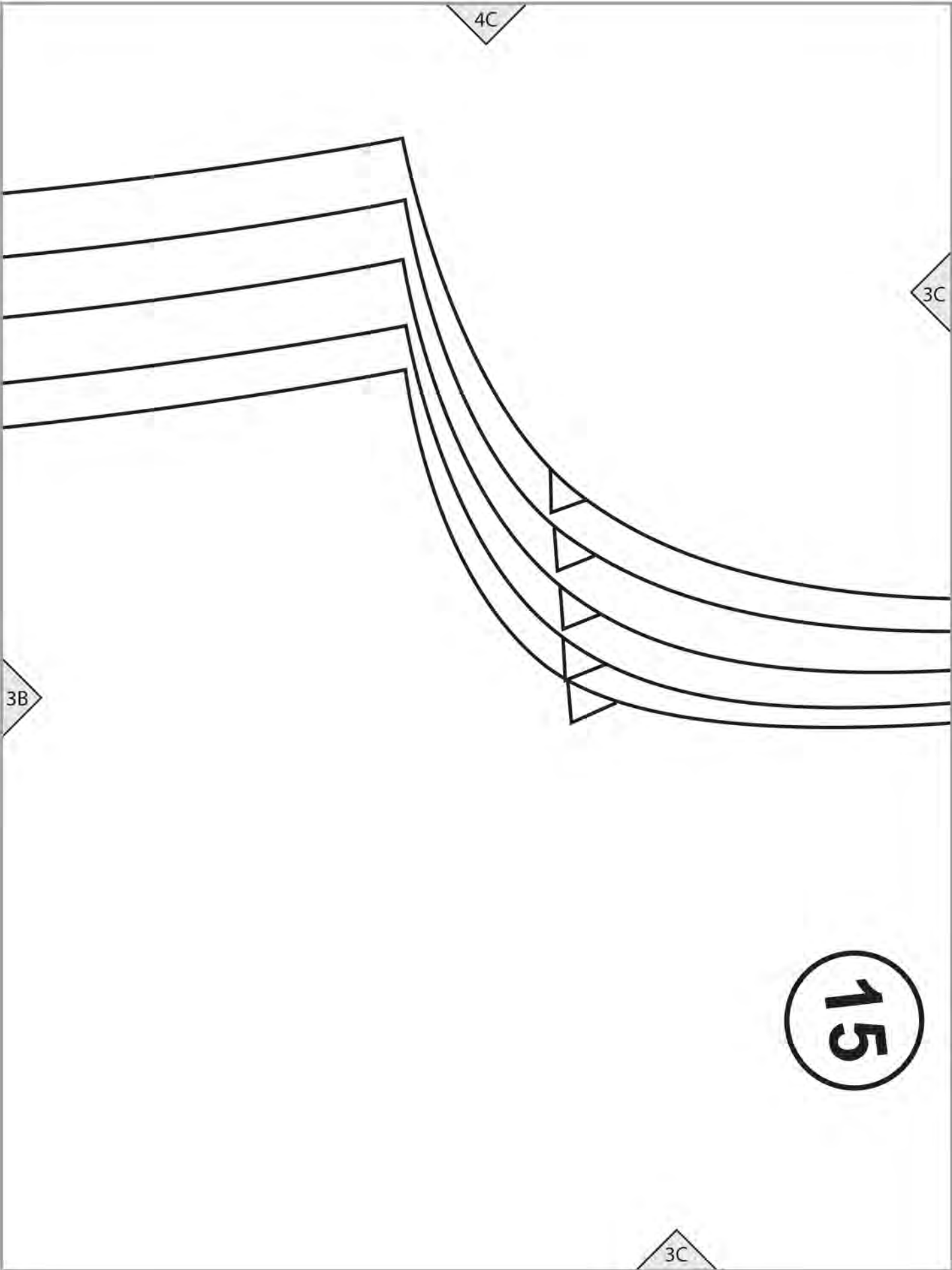
4B

3A

3B

3B





3B

4C

3C

3C

15

4D

3C

XXXL
XXL
L
M
S

CARDIGAN

D2/D3/D6 FRO
Cut 2

3D

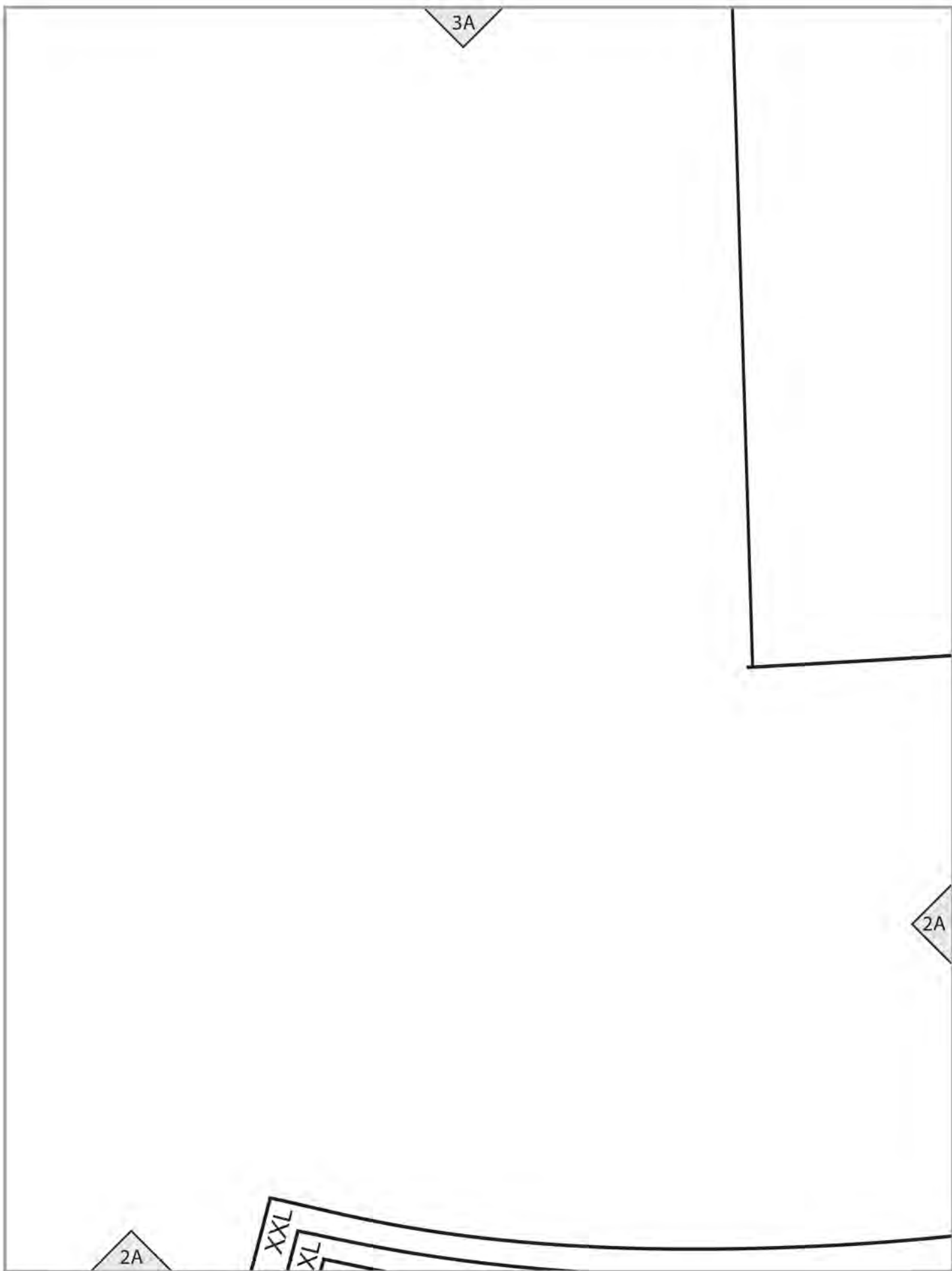
3A

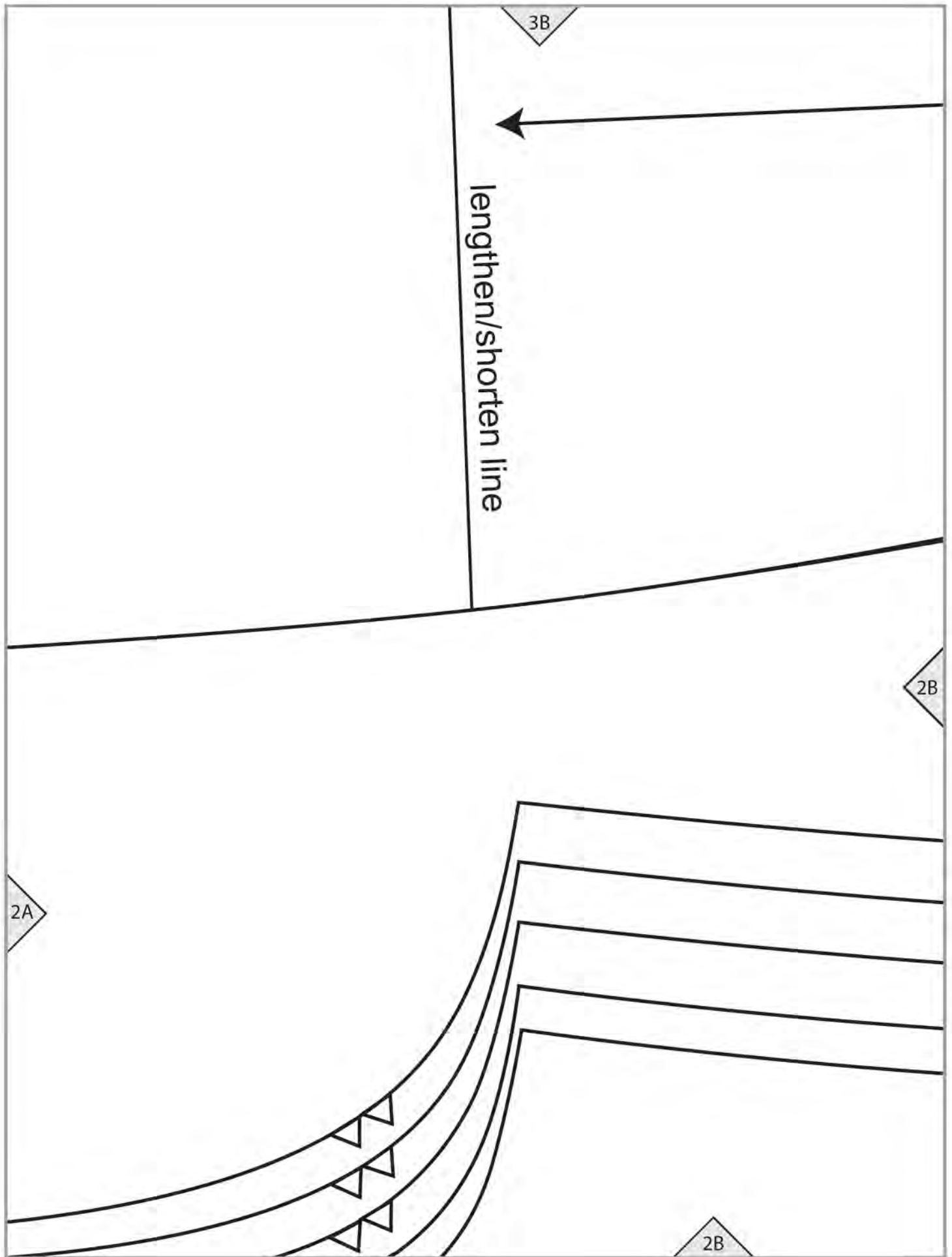
2A

2A

XXL

XL





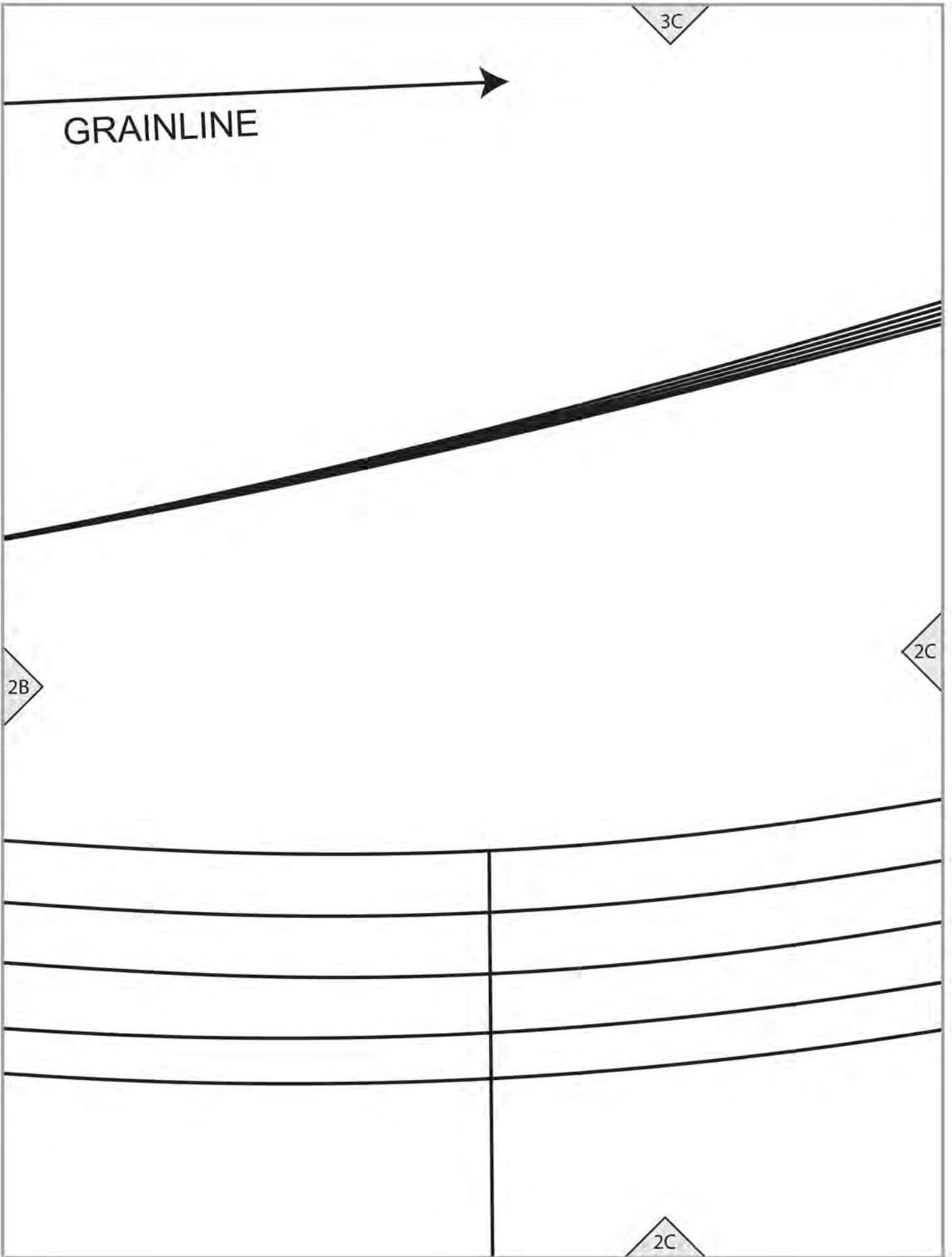
GRAINLINE

3C

2B

2C

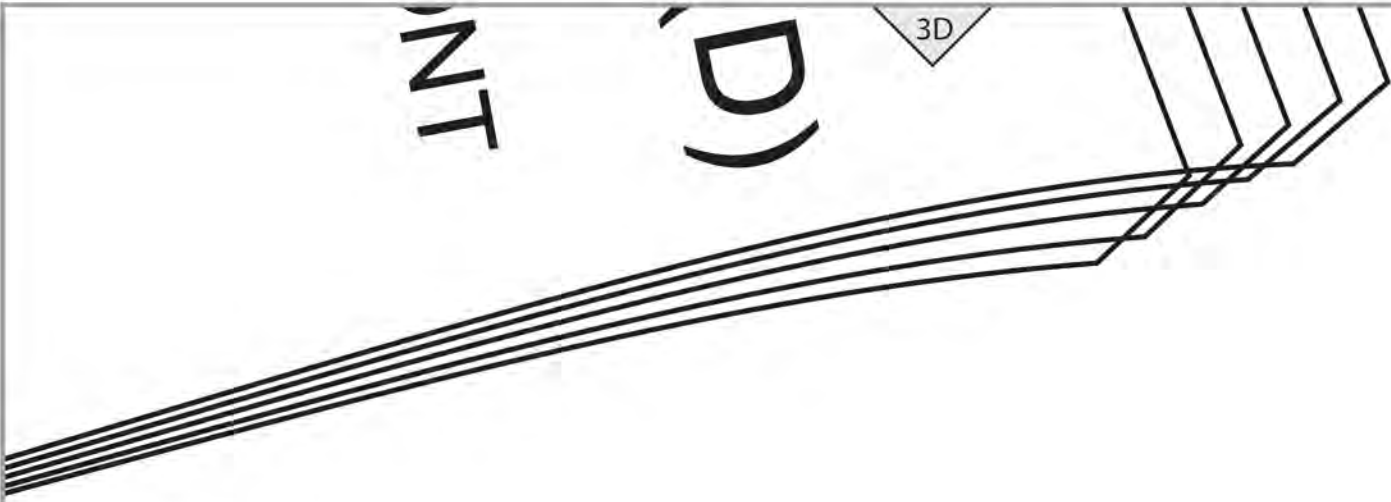
2C



2C

S
M
L
XL
XXL

2D



NT
)D

2A

L

M

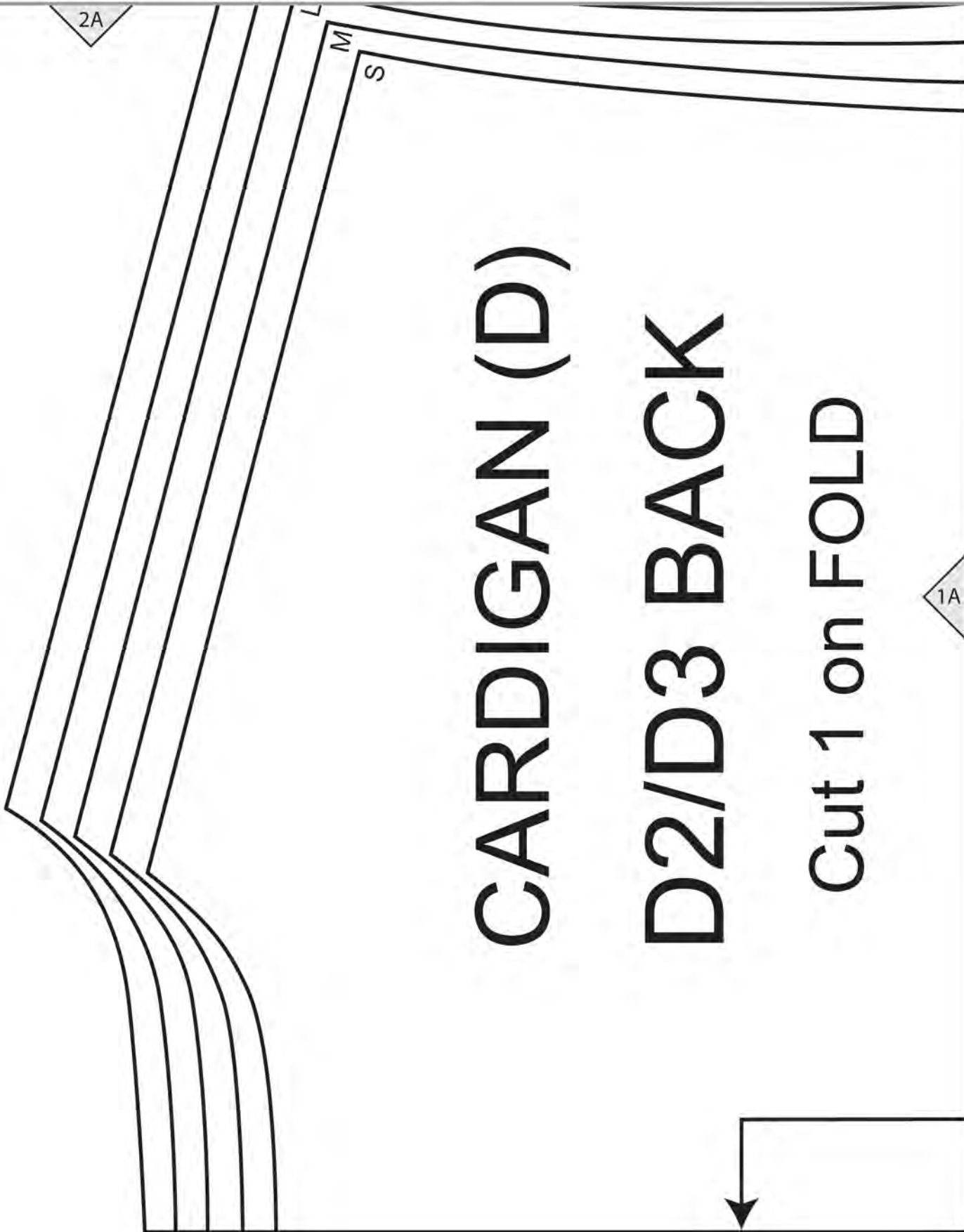
S

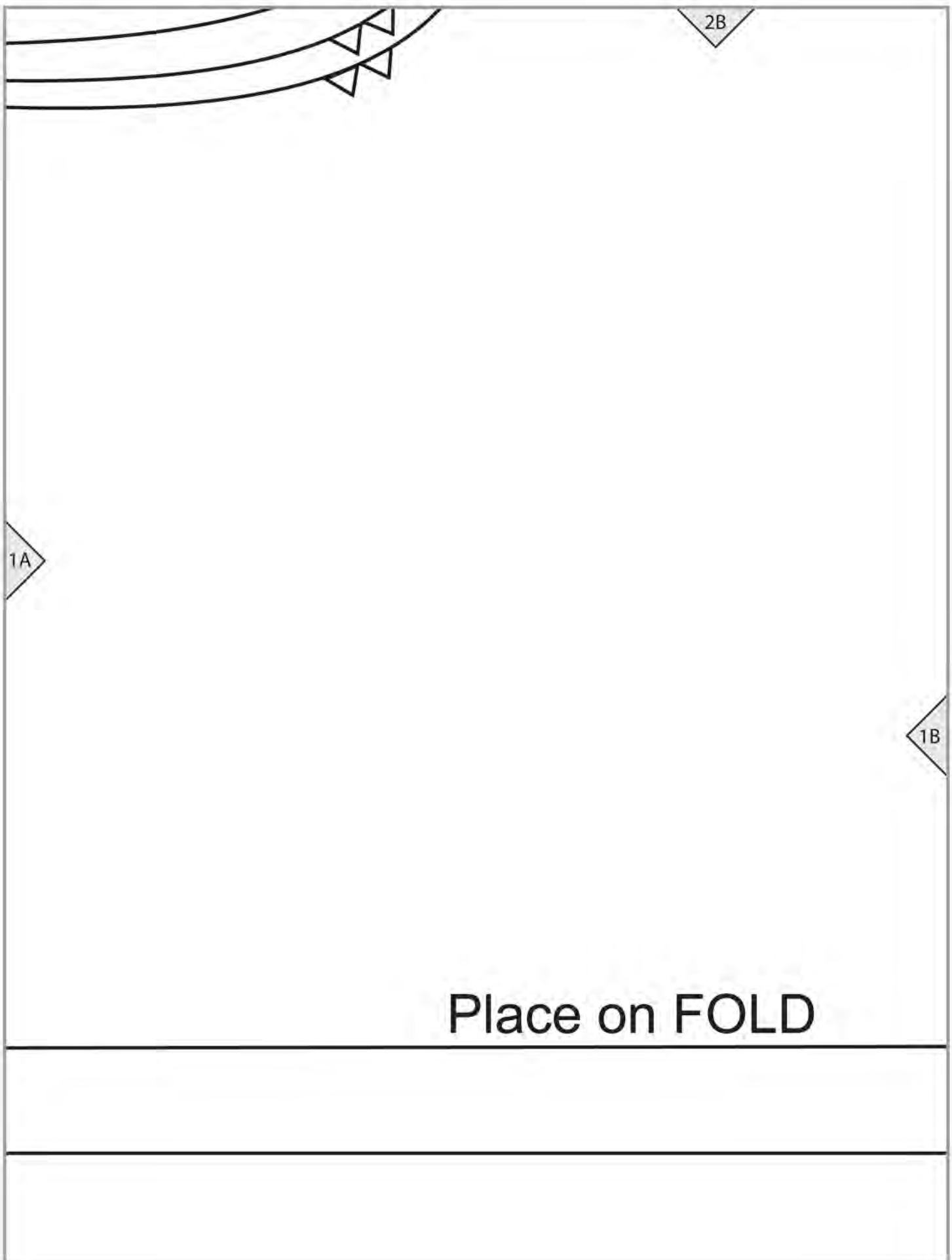
CARDIGAN (D)

D2/D3 BACK

Cut 1 on FOLD

1A





2B

1A

1B

Place on FOLD

1B

16

lengthen/shorten line

2C

1C



1C

D2 cutting line

2D