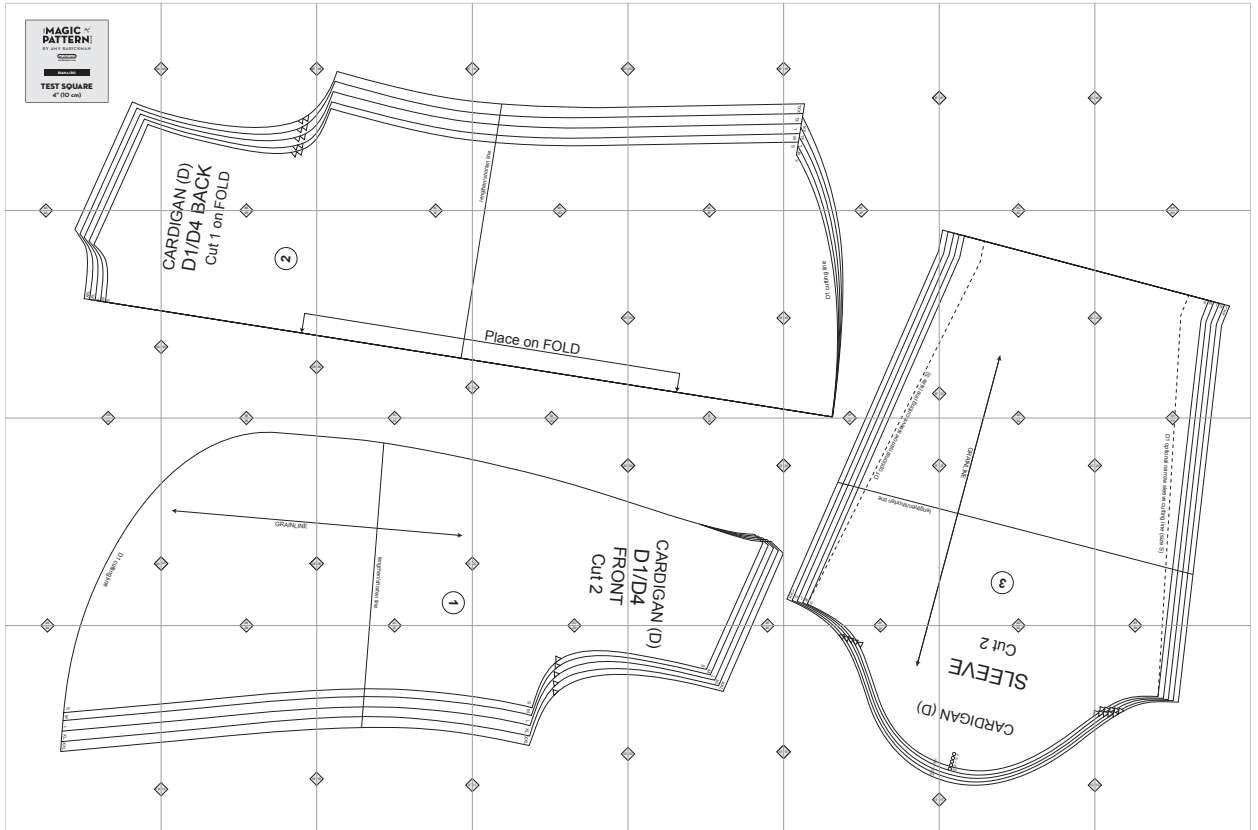


D1. Diana



Copyright ©2014 by Amy Barickman

All rights reserved. Amy Barickman's patterns may be printed for personal use, but may not be otherwise reproduced—mechanically, electronically, or by any other means, including photocopying—without written permission of the publisher.

Sewing pattern designs for *The Magic Pattern Book* by Amy Barickman are intended for personal use only, and not as the basis for commercial manufacturing.

Workman Publishing, New York • workman.com

THE **MAGIC** 
PATTERN BOOK

BY AMY BARICKMAN

workman

workman.com

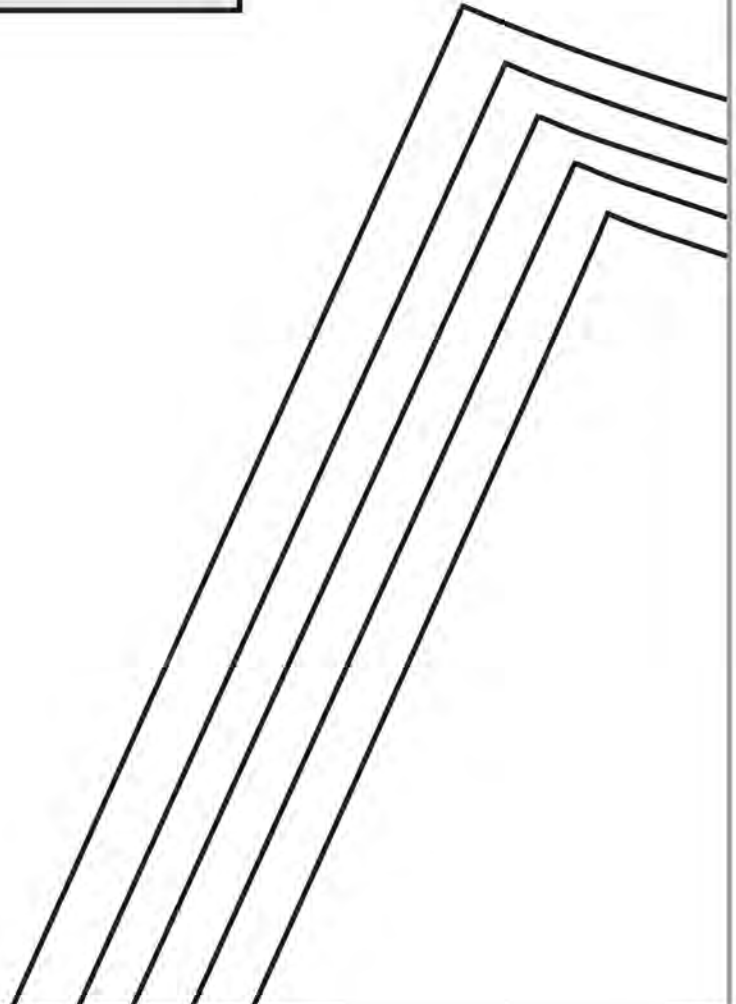
DIANA (D1)

TEST SQUARE

4" (10 cm)

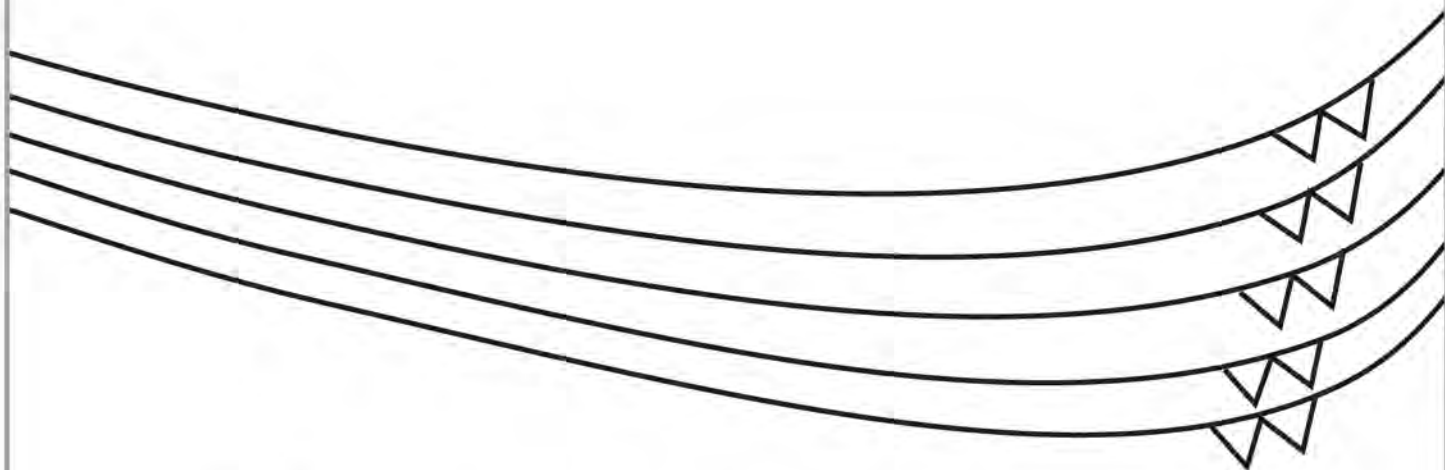
4A

4A



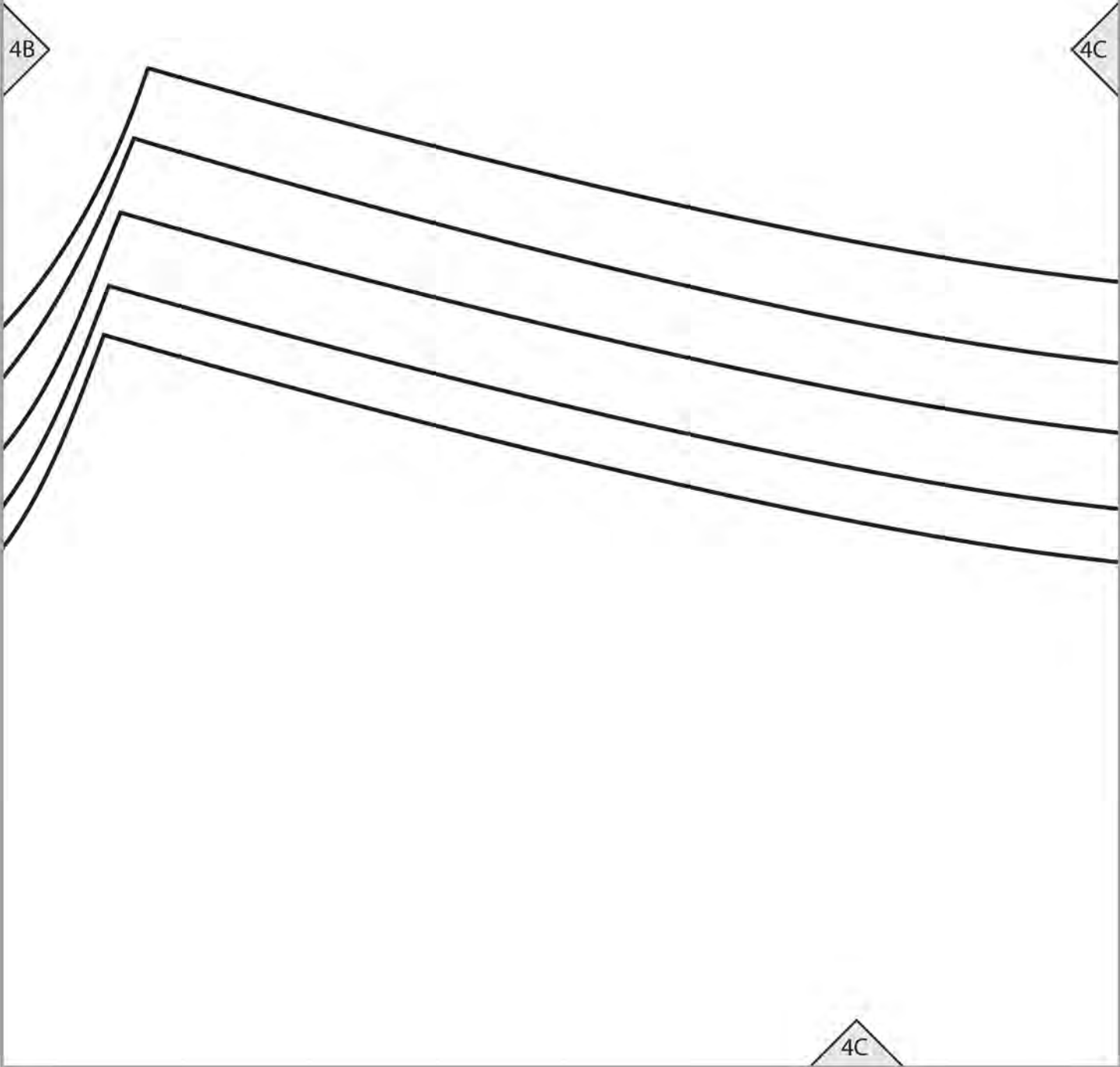
4A

4B



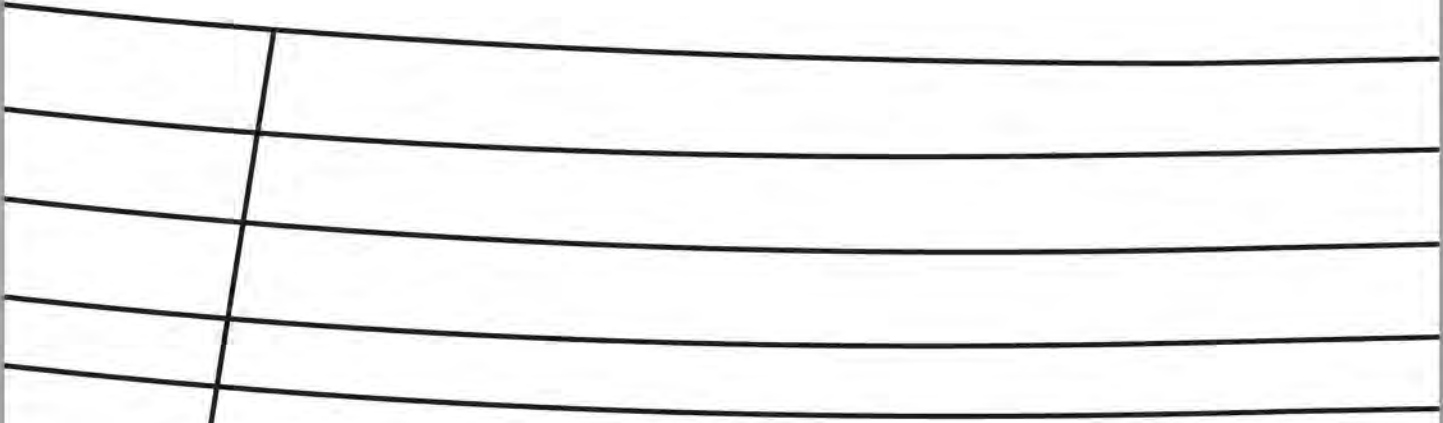
**AN (D)
BACK
FOLD**

4B



4C

4D



4D

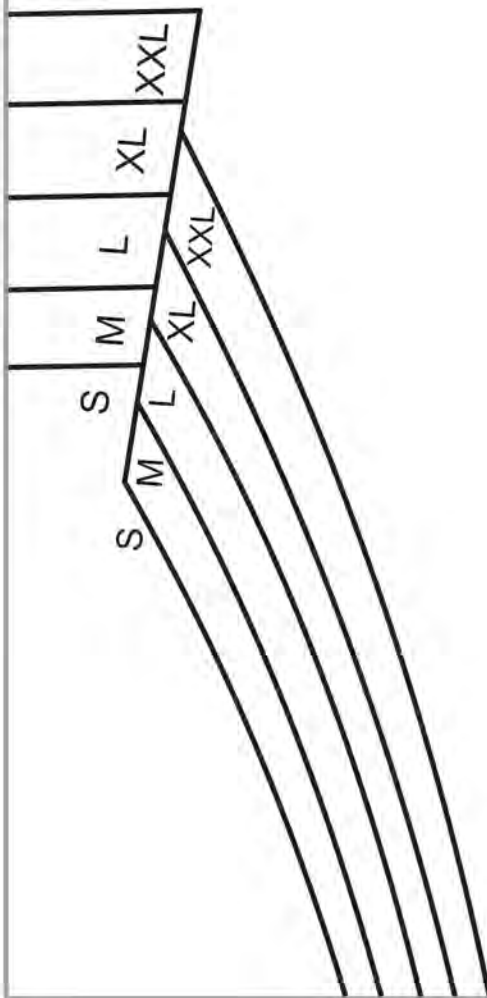
4D

4E

4E

4E

4F



4F

4F

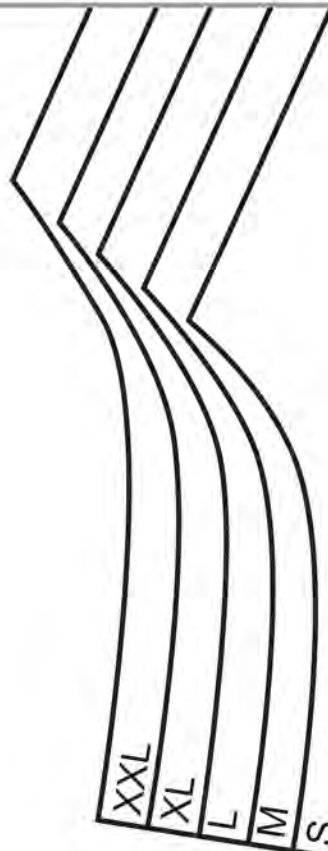
4G

4G

4G

4H

4A



3A

3A

CARDIG D1/D4 I

Cut 1 on

2

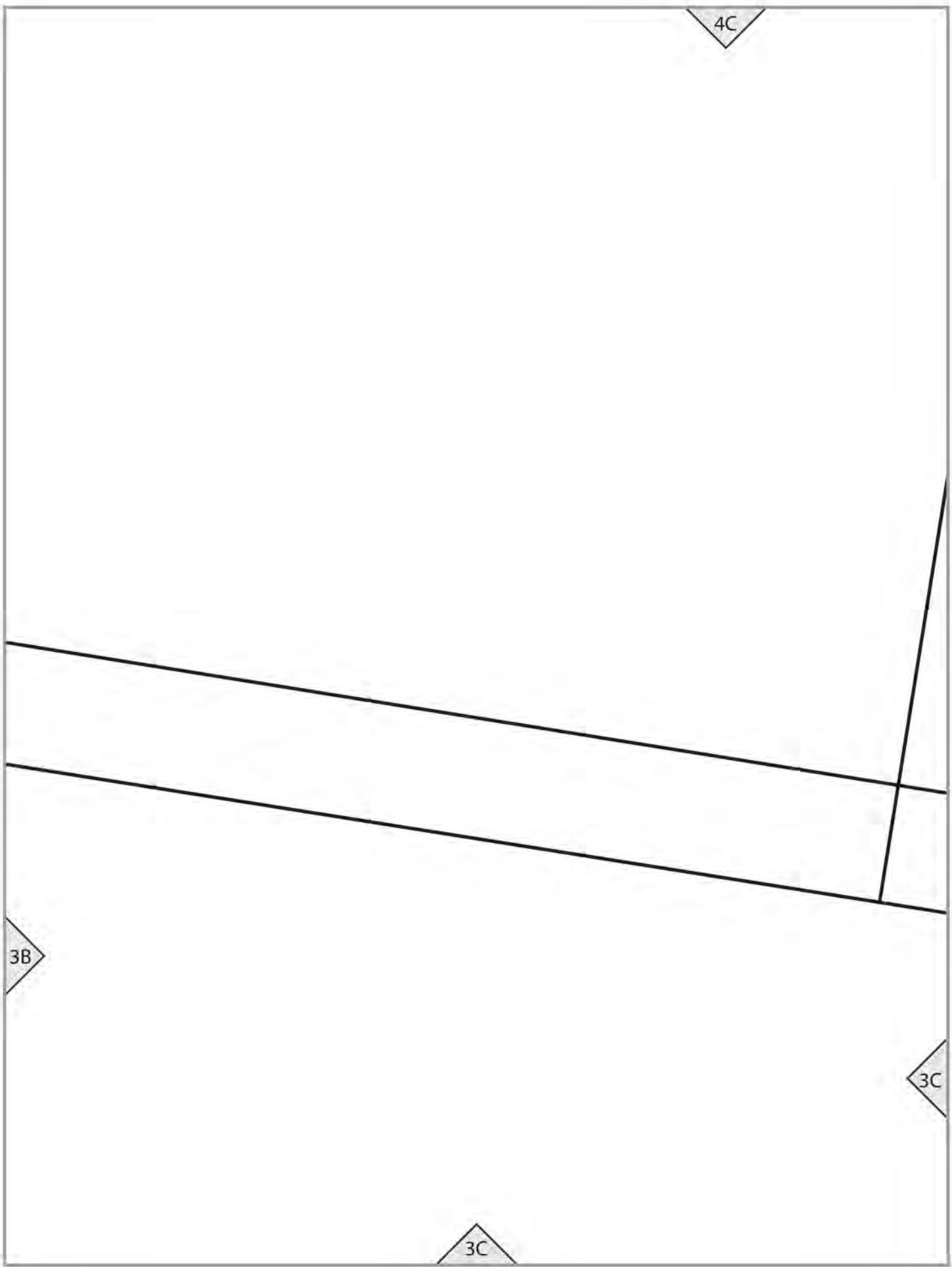
4B

3A

3B

3B





4D

3D

Place on FOLD

3C

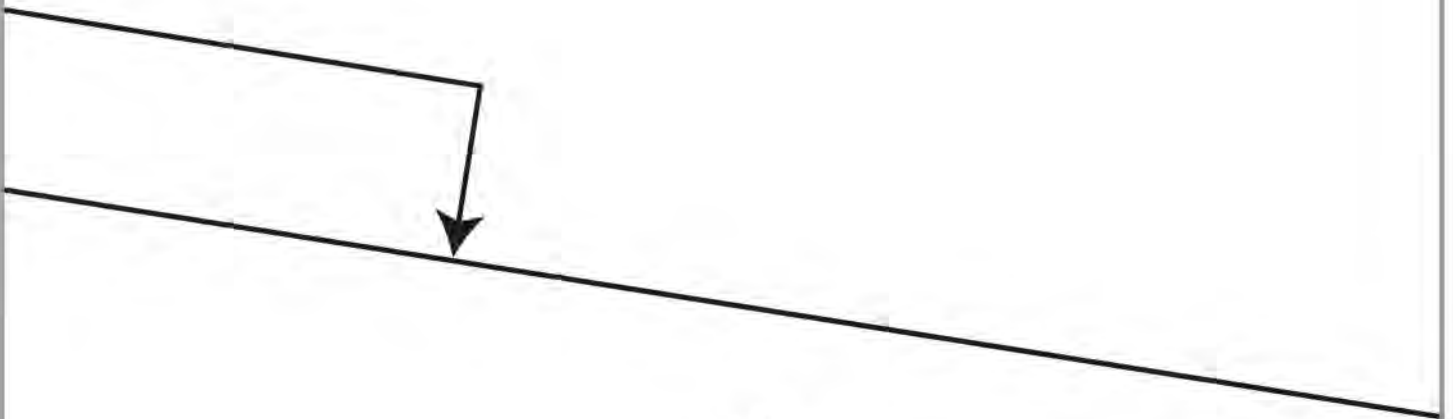
3D

4E

3D

3E

3E



3E

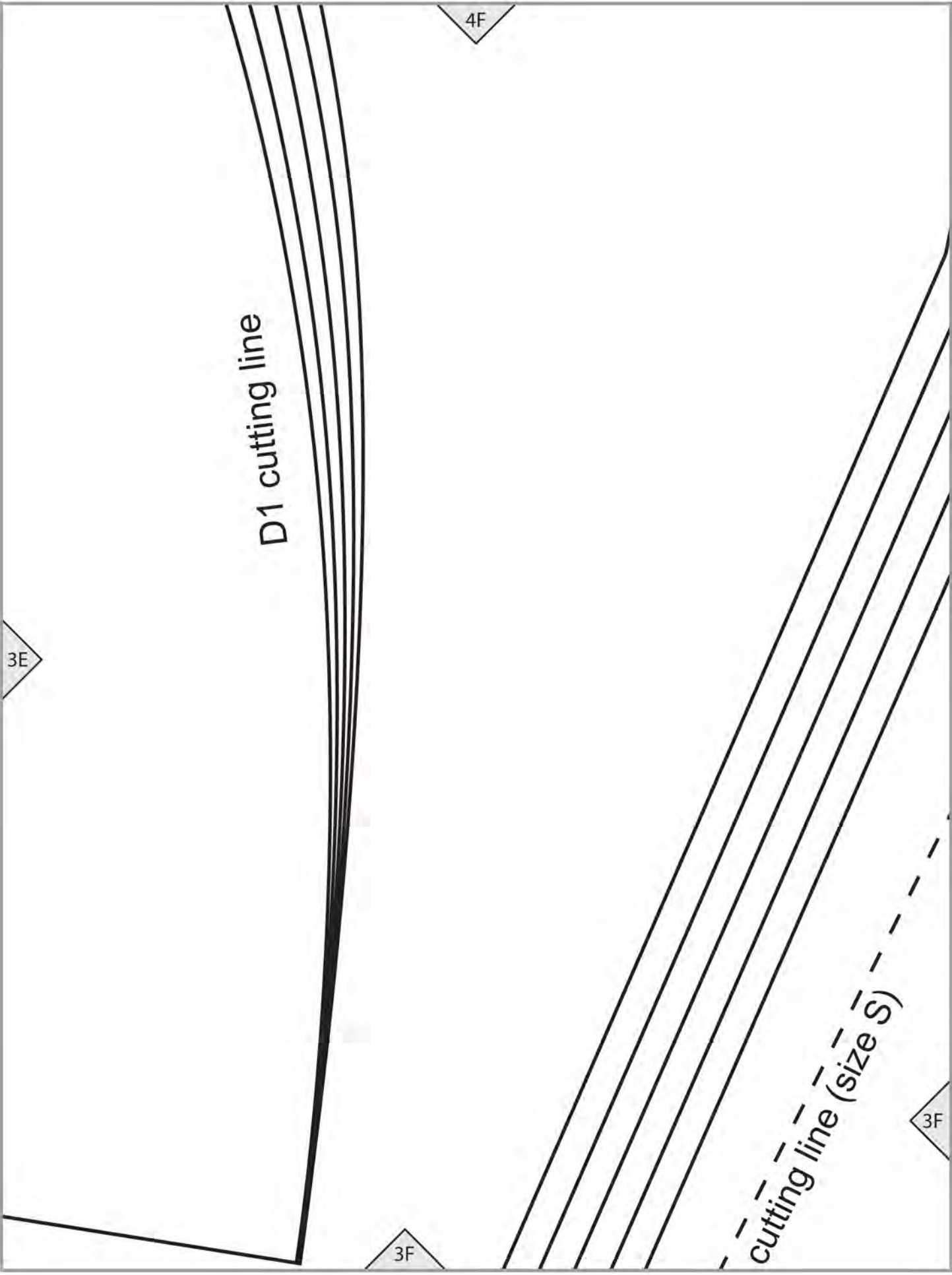
D1 cutting line

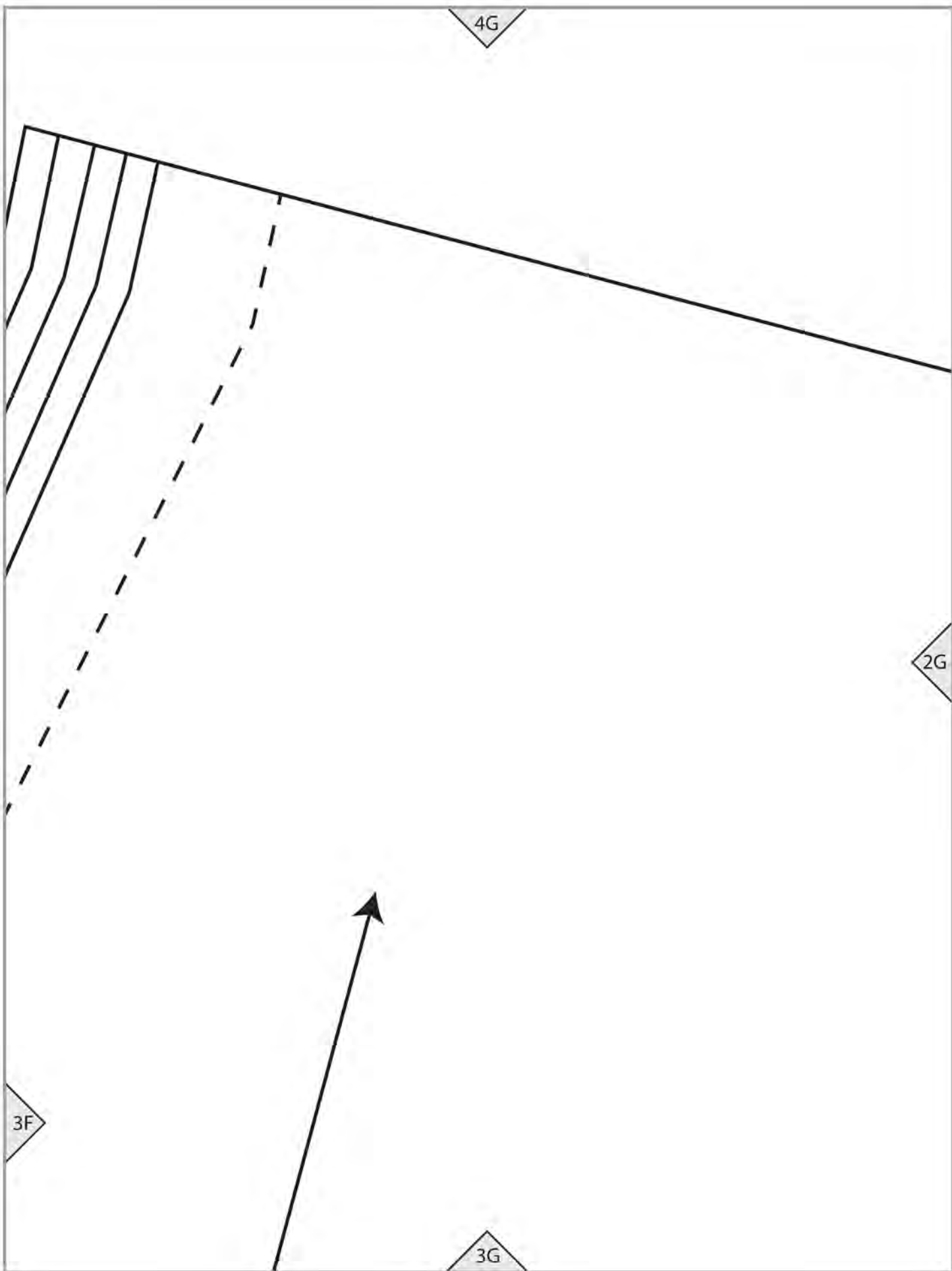
4F

3F

3F

cutting line (size S)



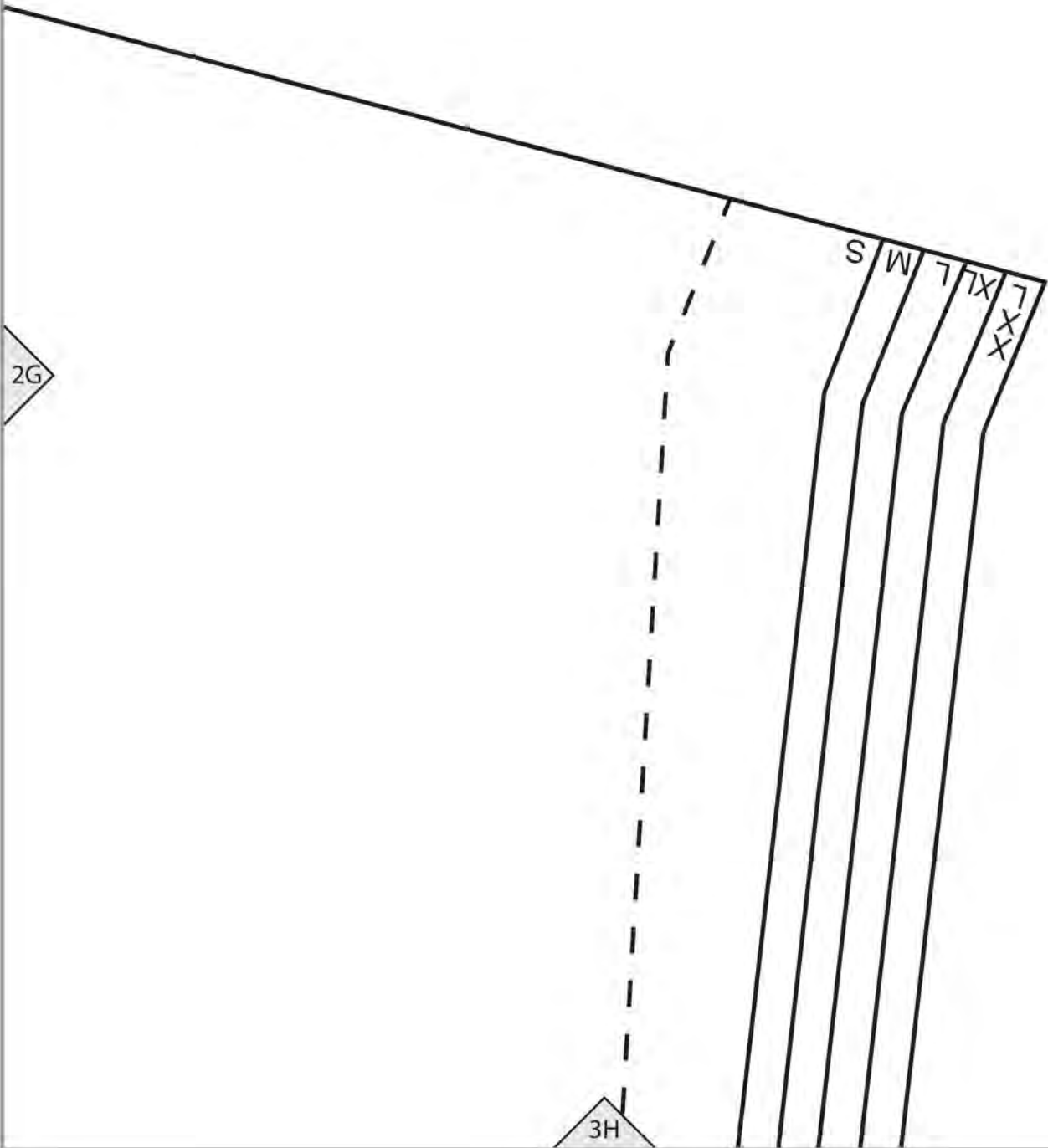


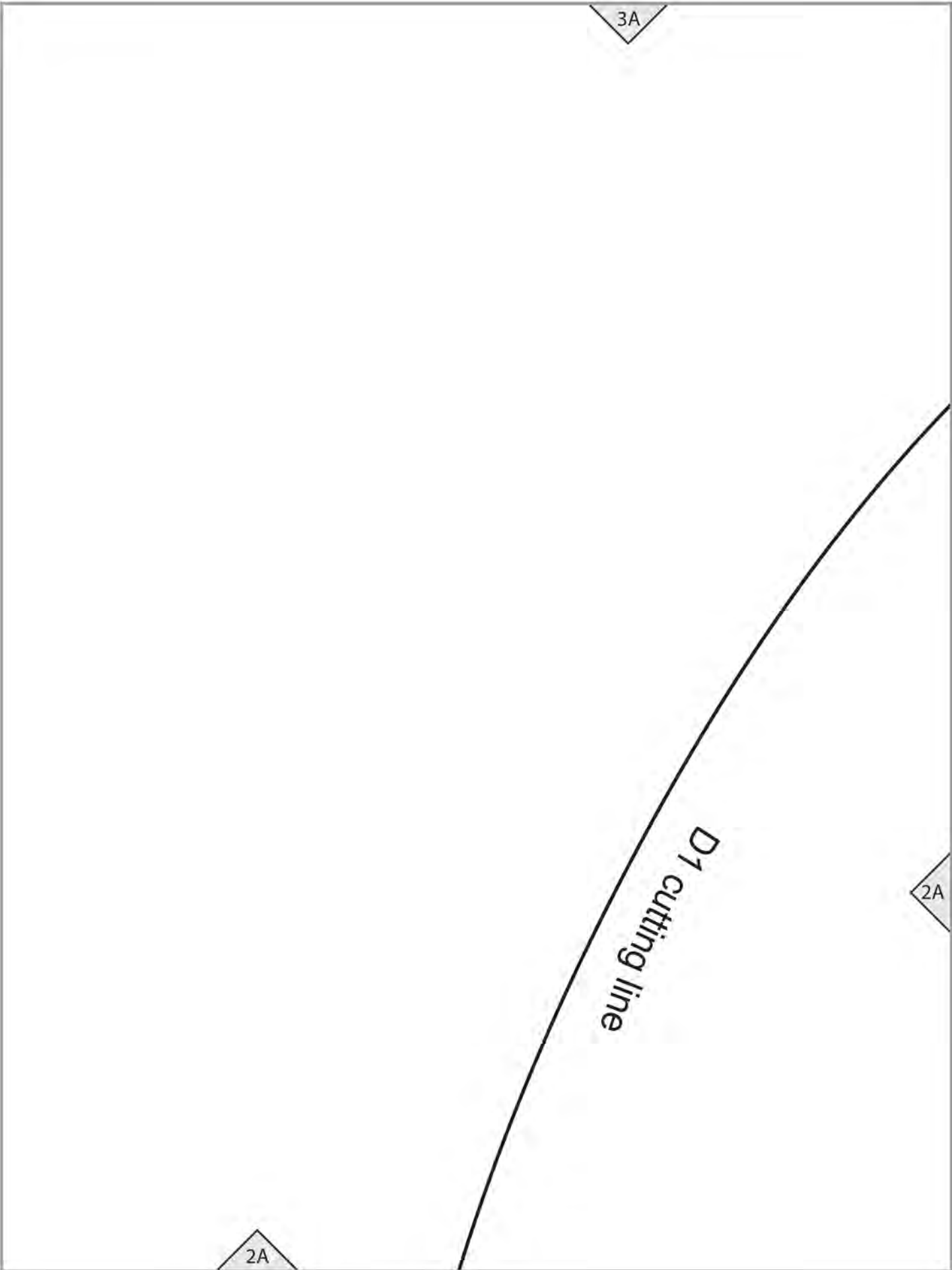
4H

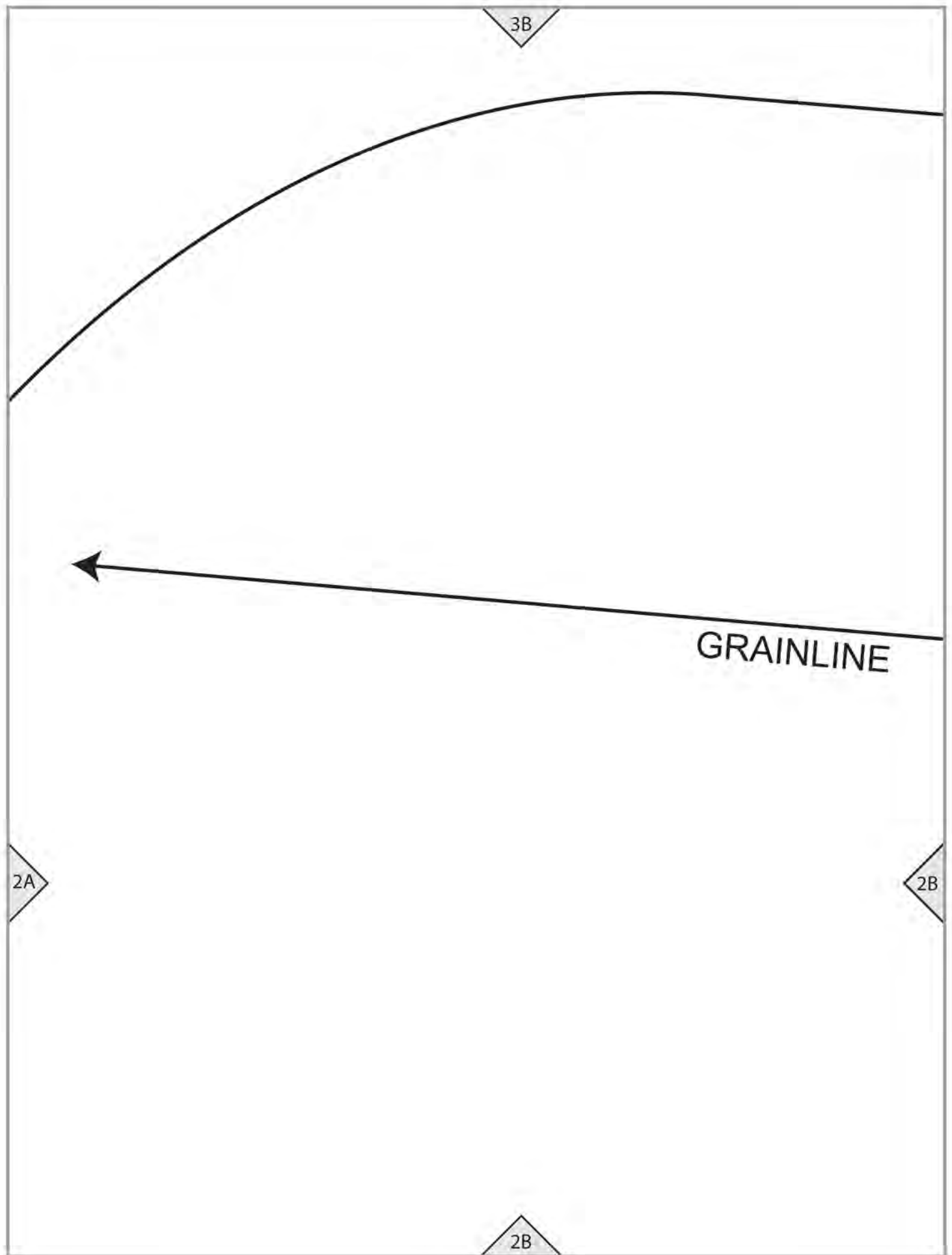
2G

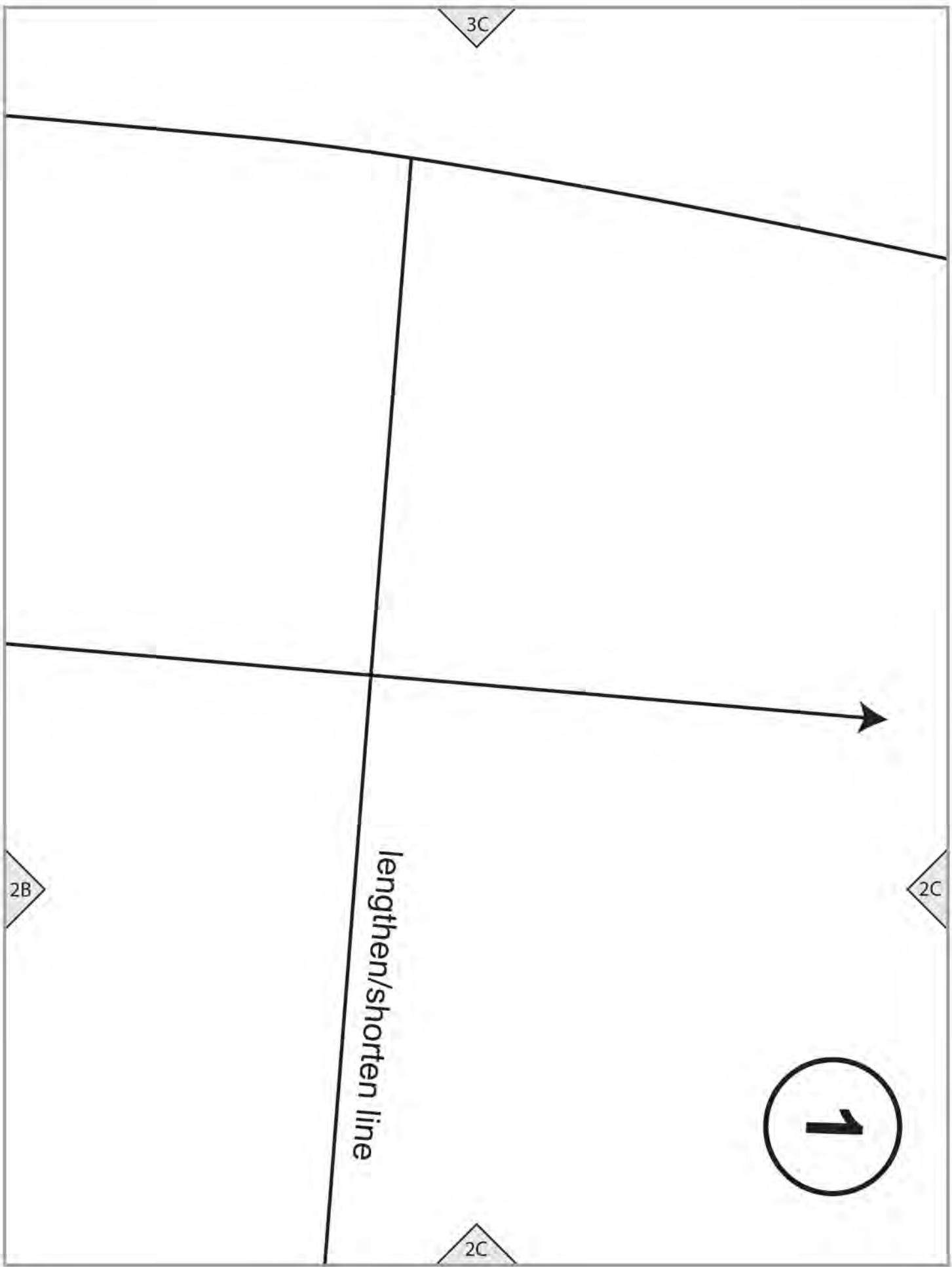
3H

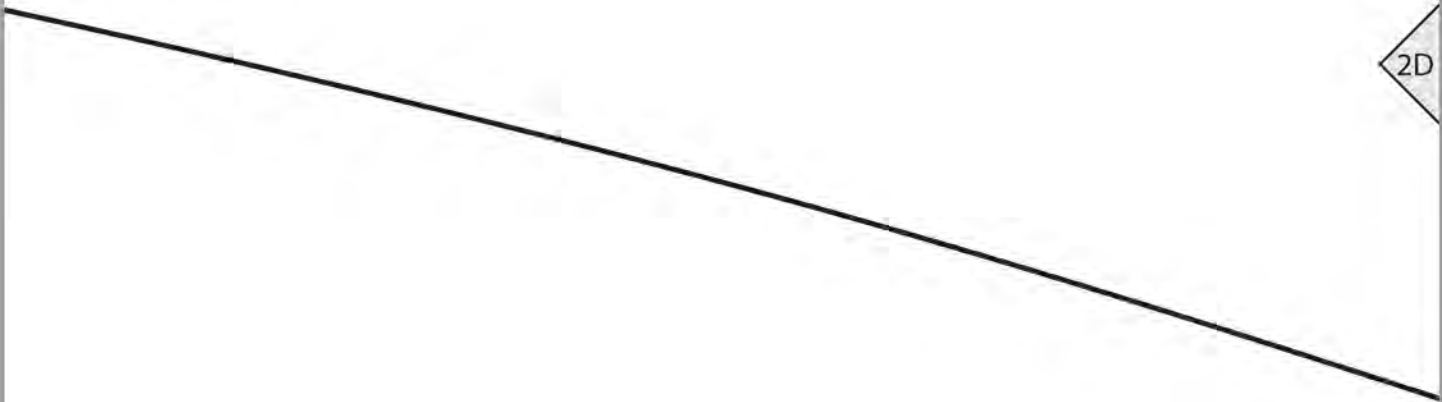
S
W
T
TX
T
XX











3D

2D

FRONT
Cut 2

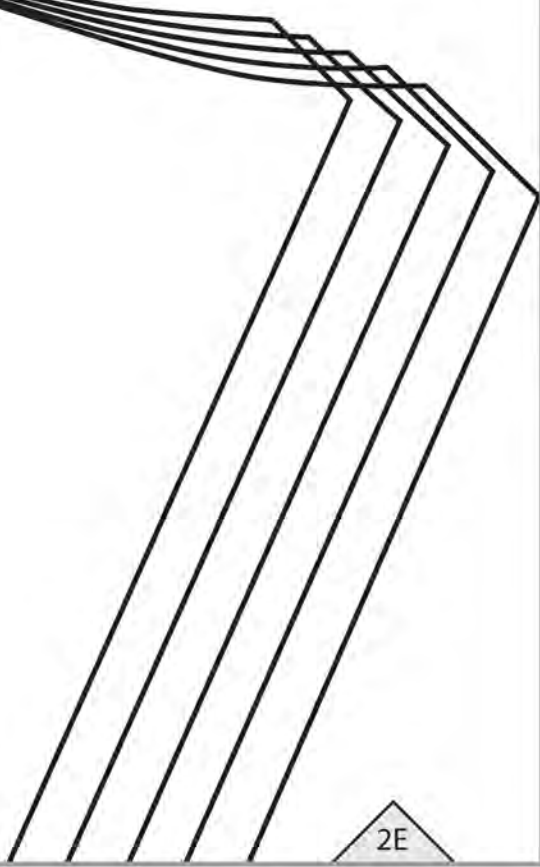
2D

2C

3E

2D

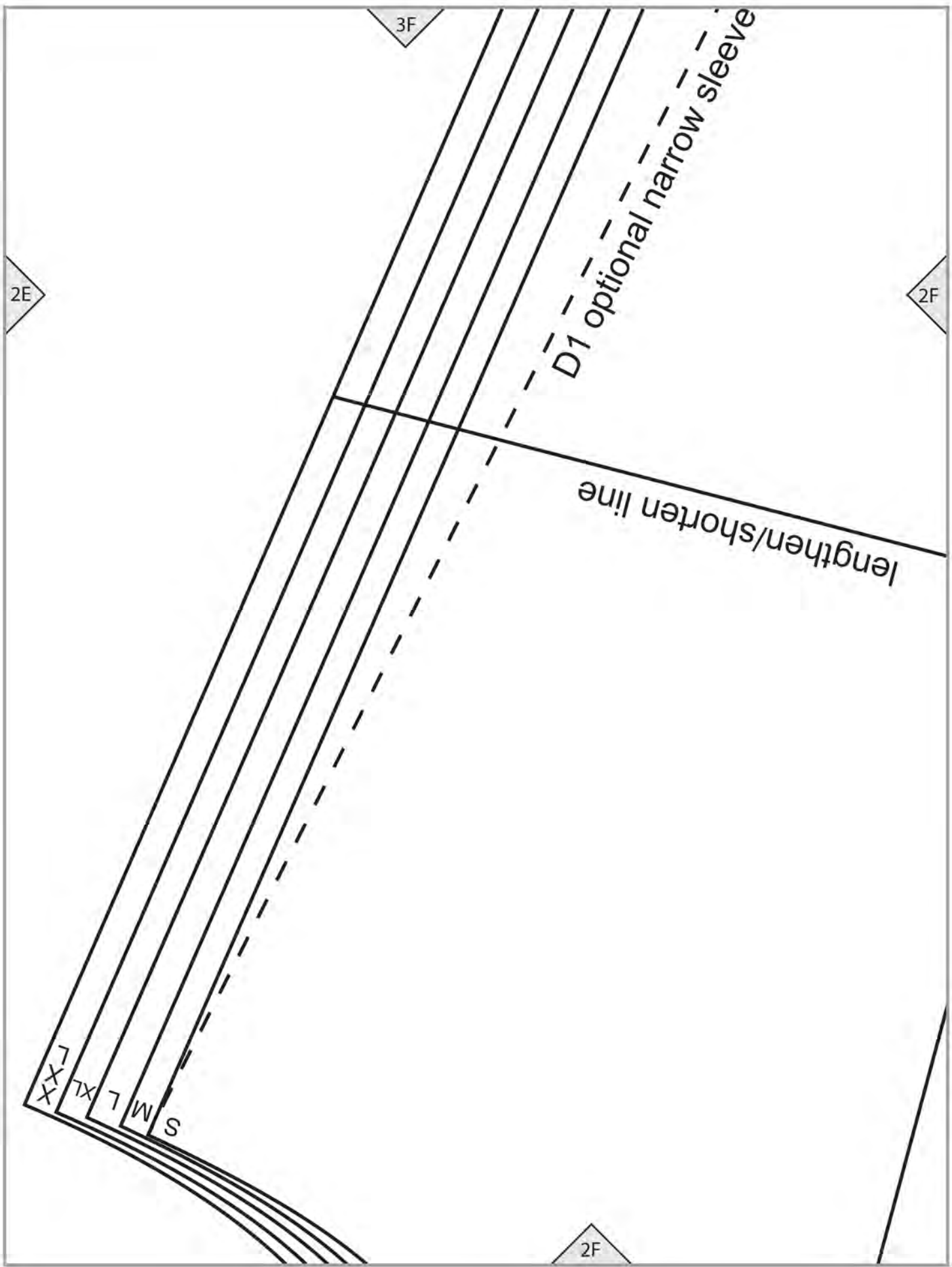
2E



2E

CARDIGAN

D1/D4



2E

3F

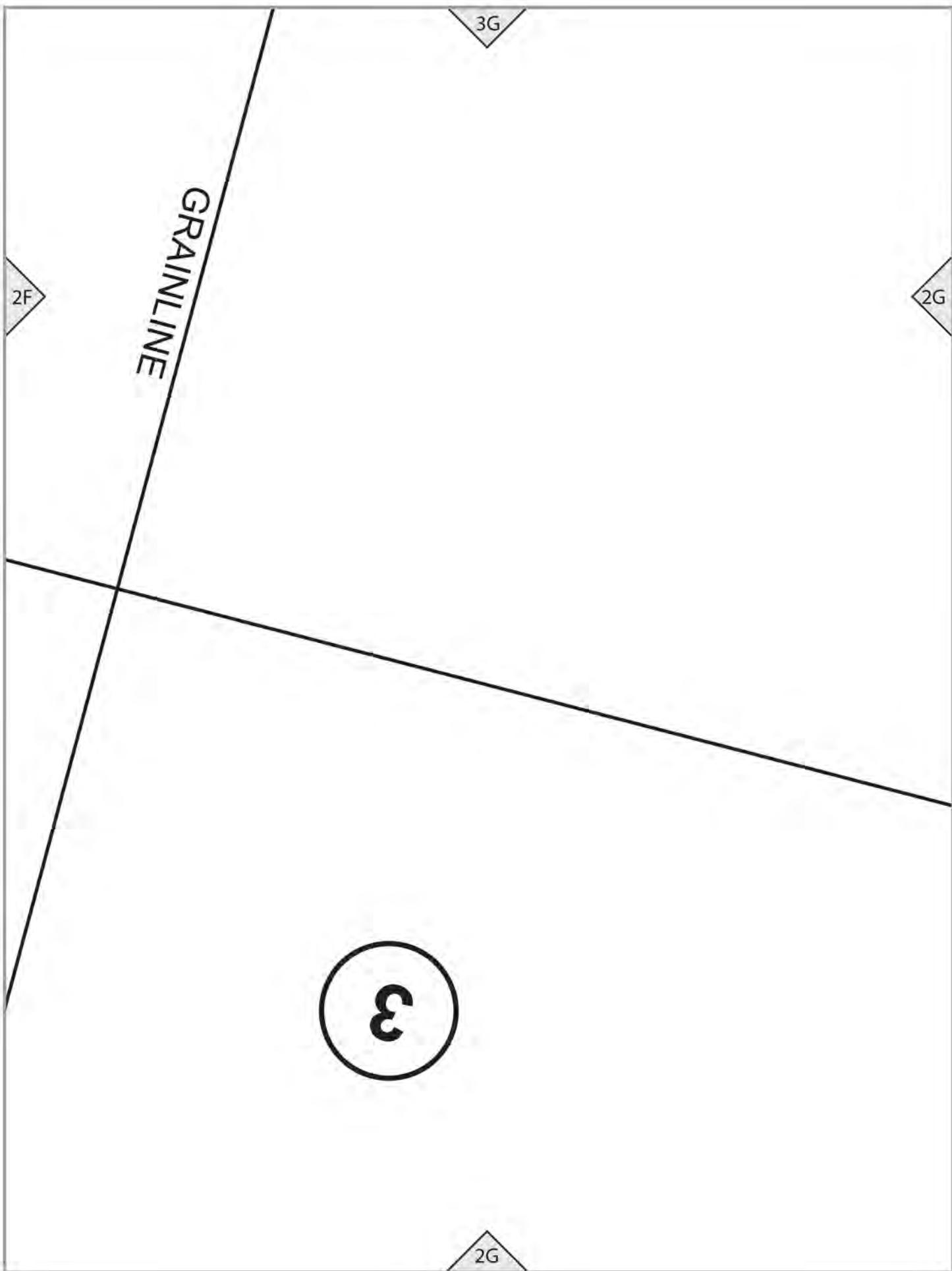
2F

D1 optional narrow sleeve

lengthen/shorten line

XXL
XL
L
M
S

2F

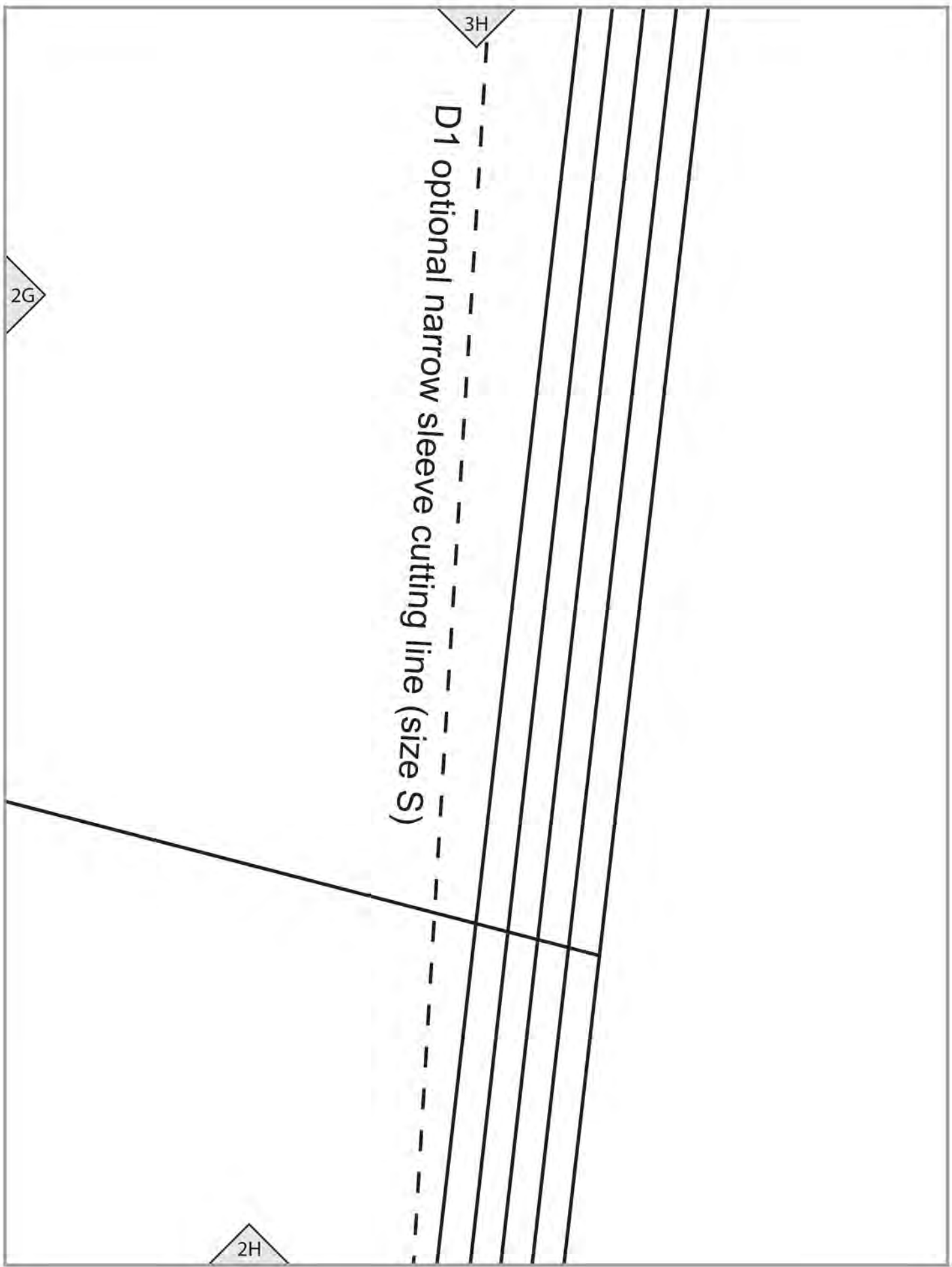


D1 optional narrow sleeve cutting line (size S)

3H

2H

2G



2A

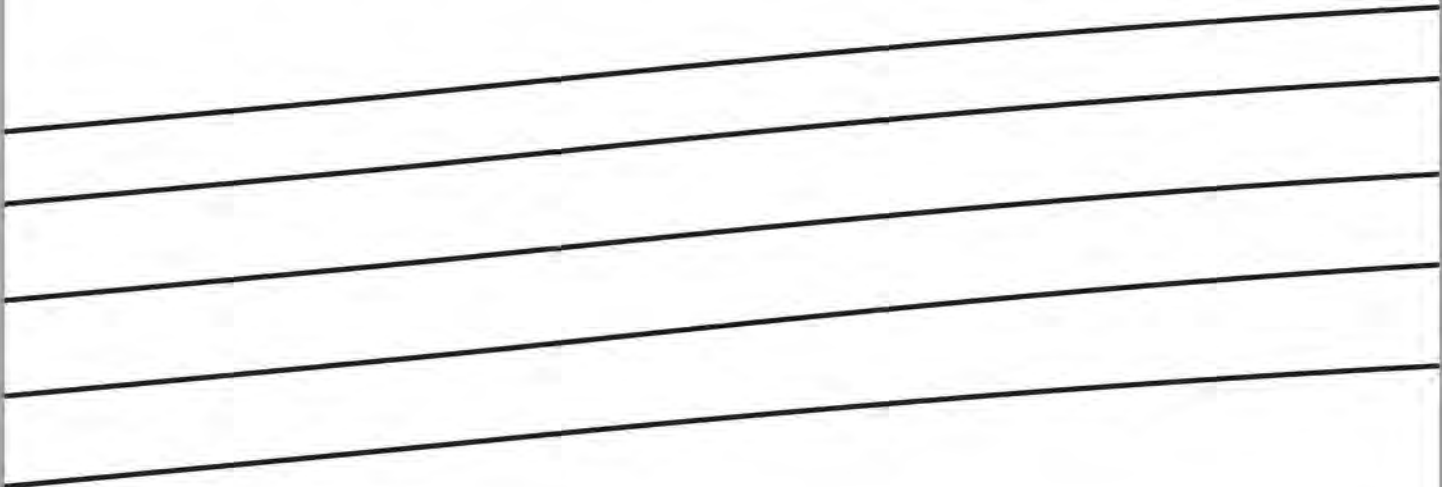
S
M
L
XL
TXX XXL

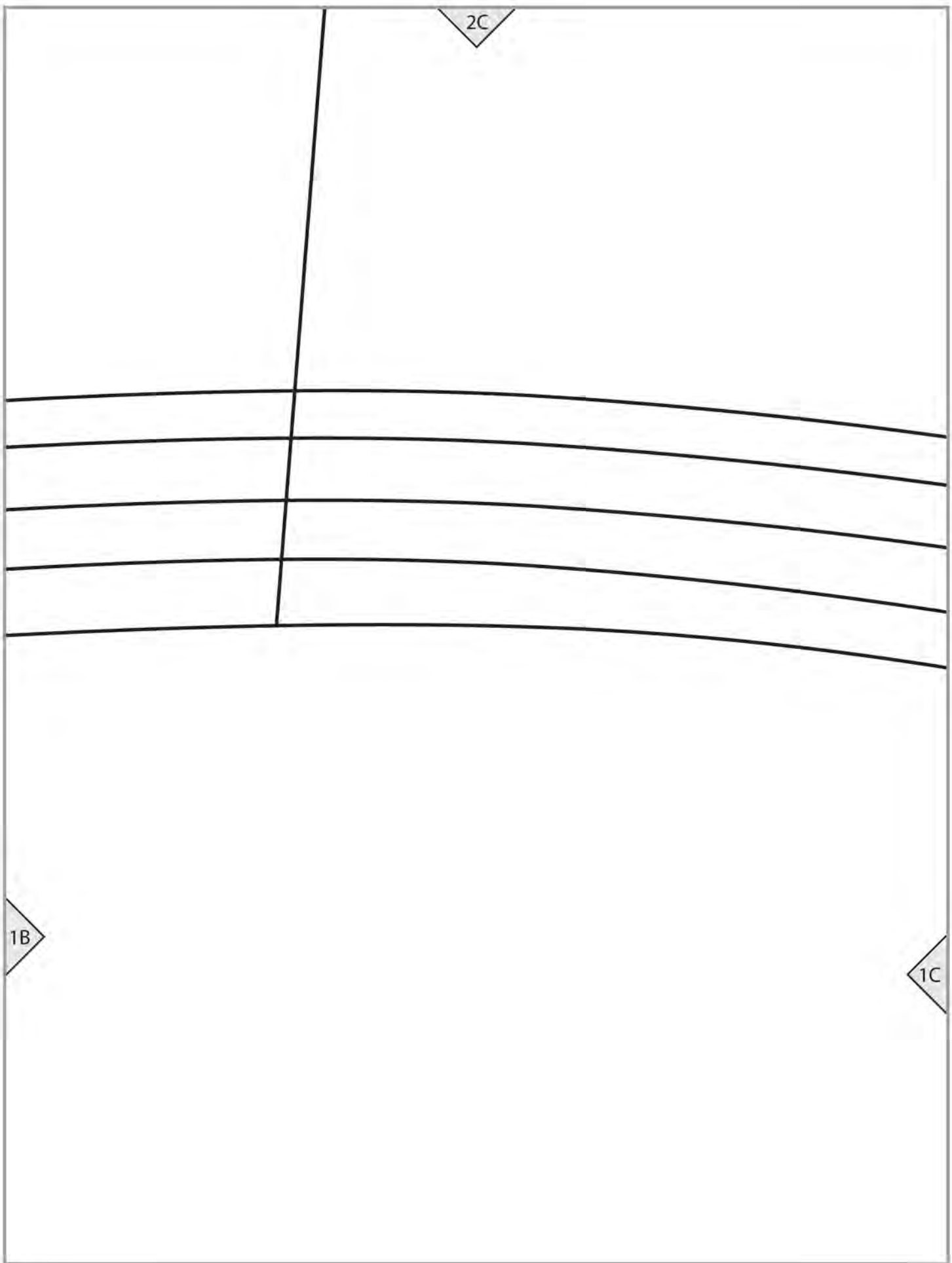
1A

2B

1A

1B

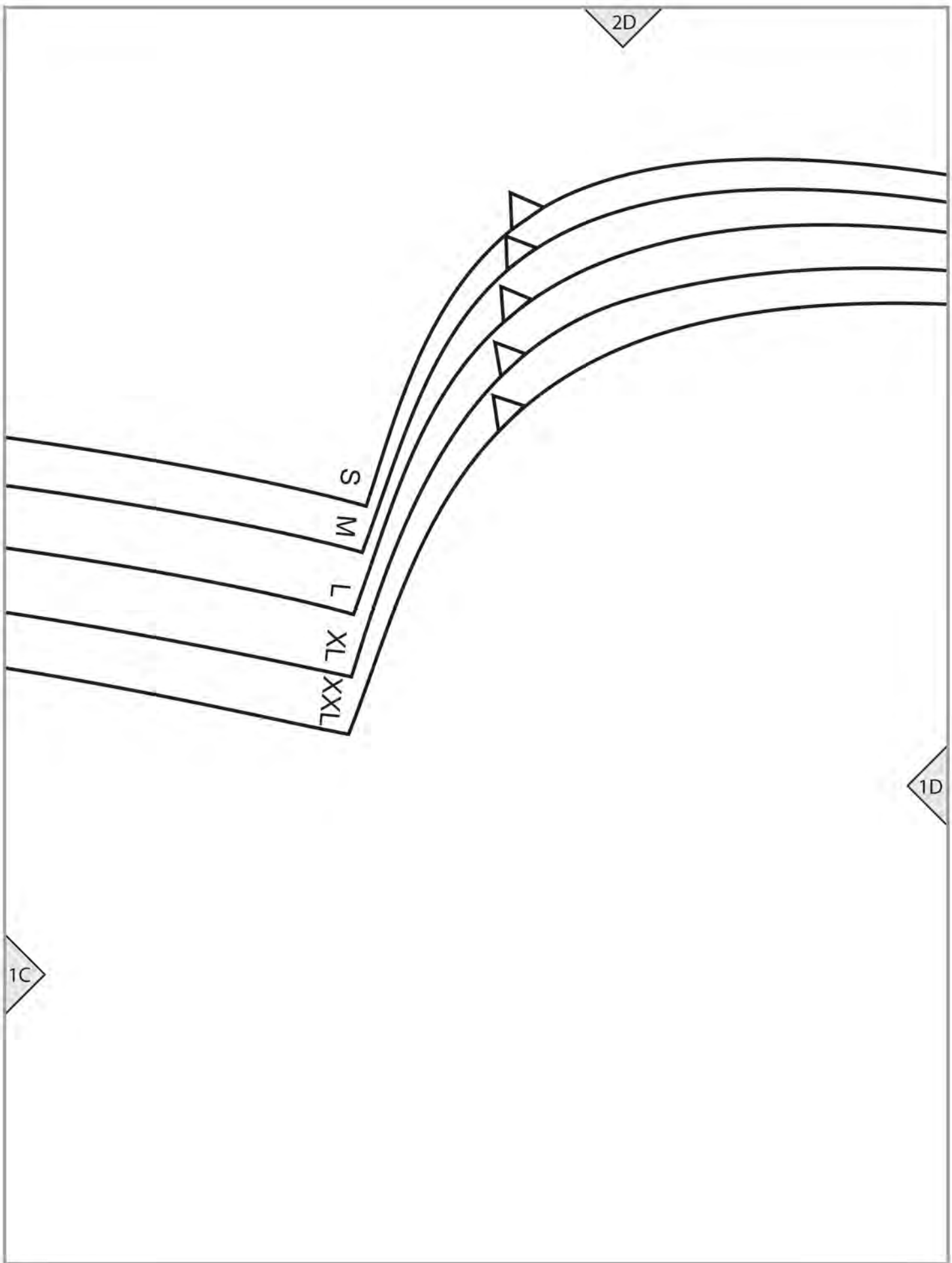




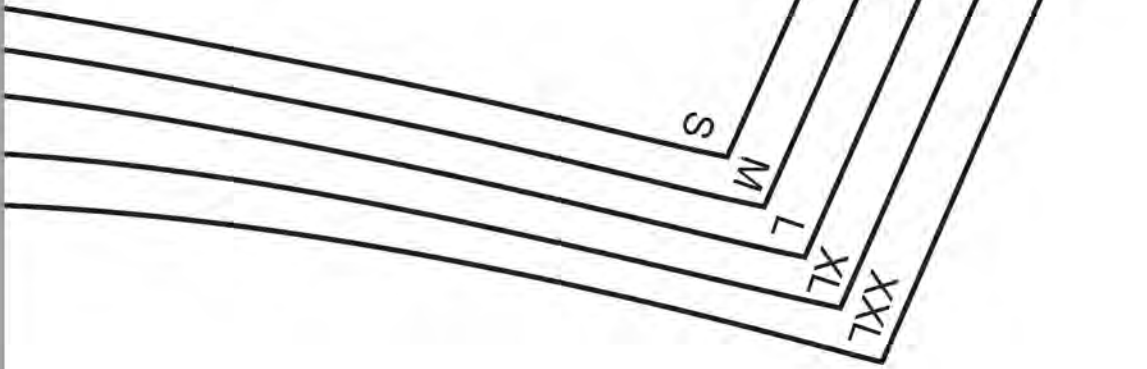
2C

1B

1C



(D)

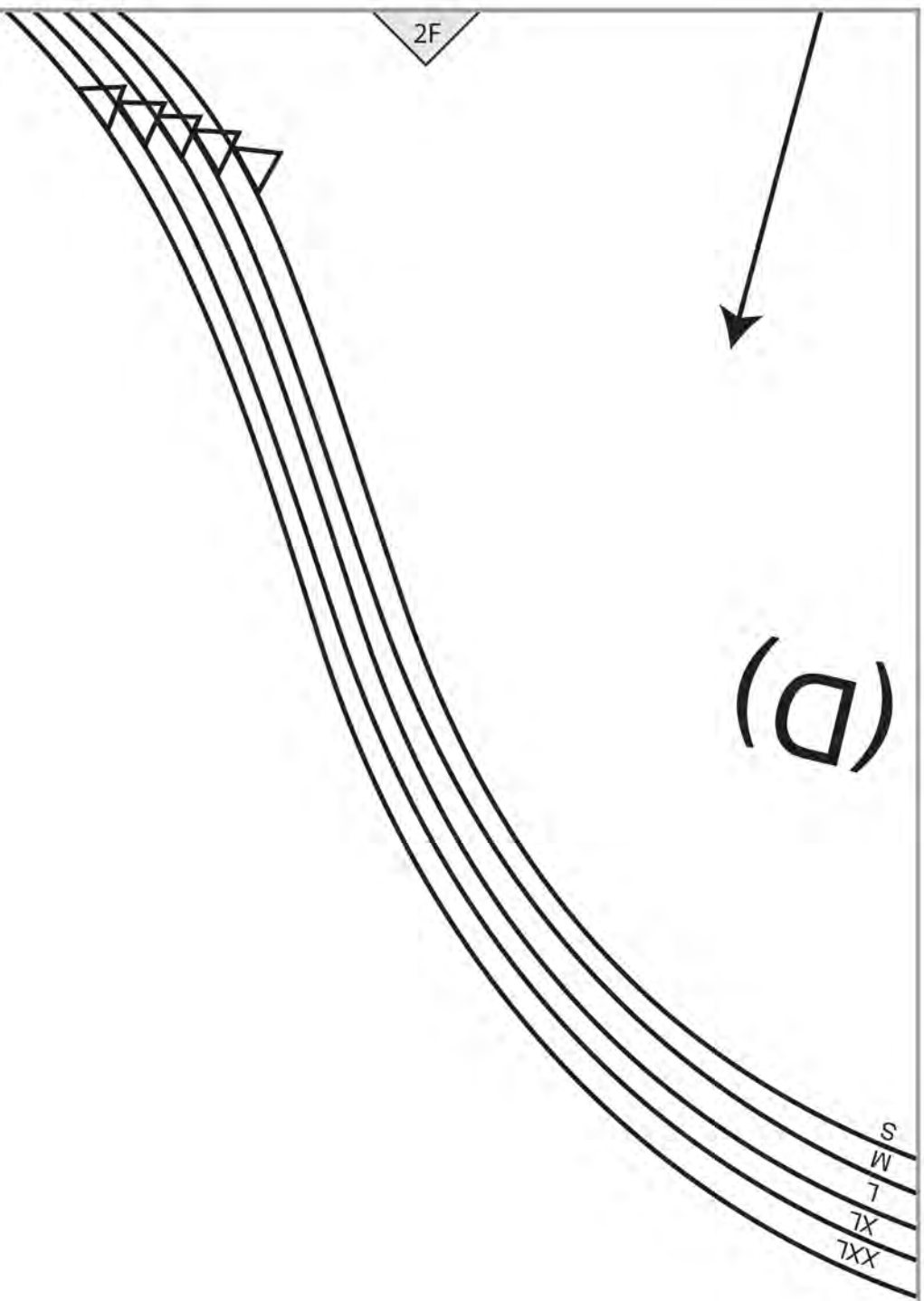


2E

1D

1E

2F



(D)

1E

1F

S
W
T
TX
TXX

2G

Cut 2

SLEEVE

CARDIGAN

S
M
L
XL
XXL

1G

1F

2H

1G

