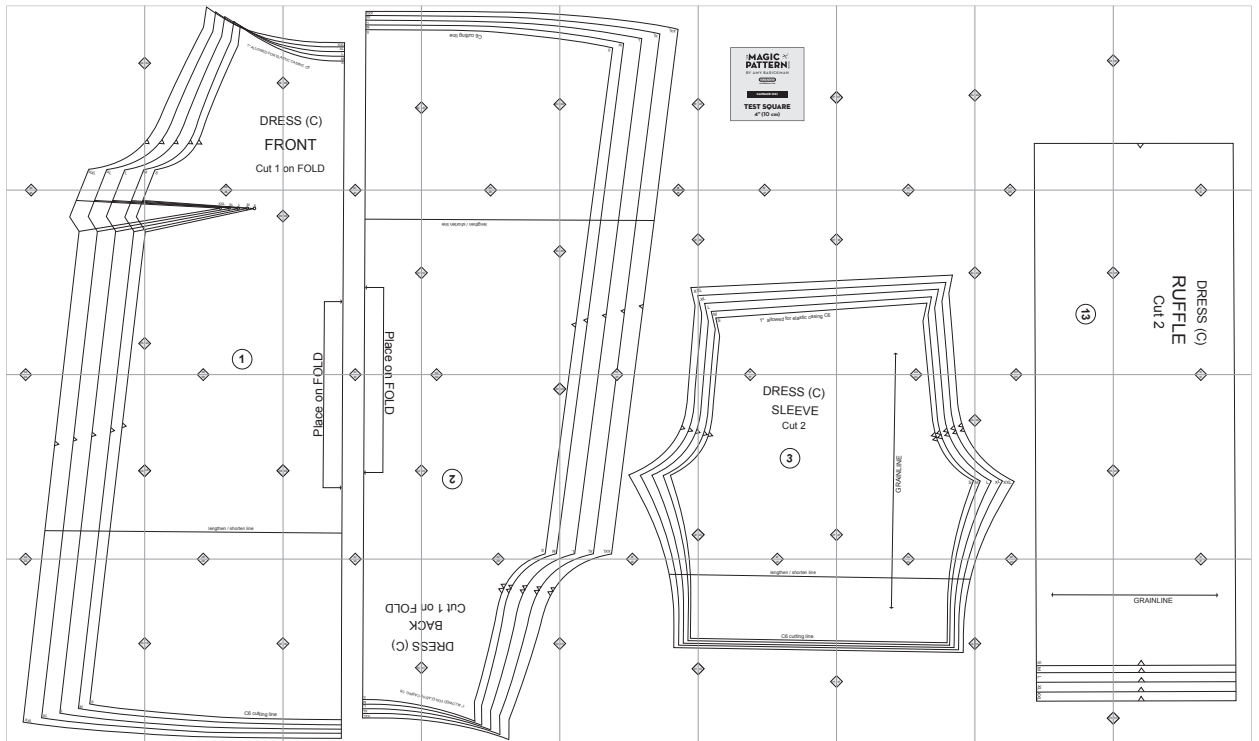


C6. Candace



Copyright ©2014 by Amy Barickman

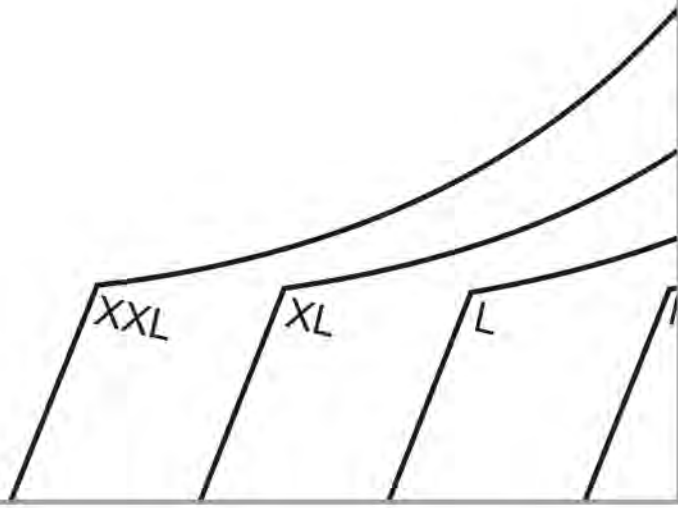
All rights reserved. Amy Barickman's patterns may be printed for personal use, but may not be otherwise reproduced—mechanically, electronically, or by any other means, including photocopying—without written permission of the publisher.

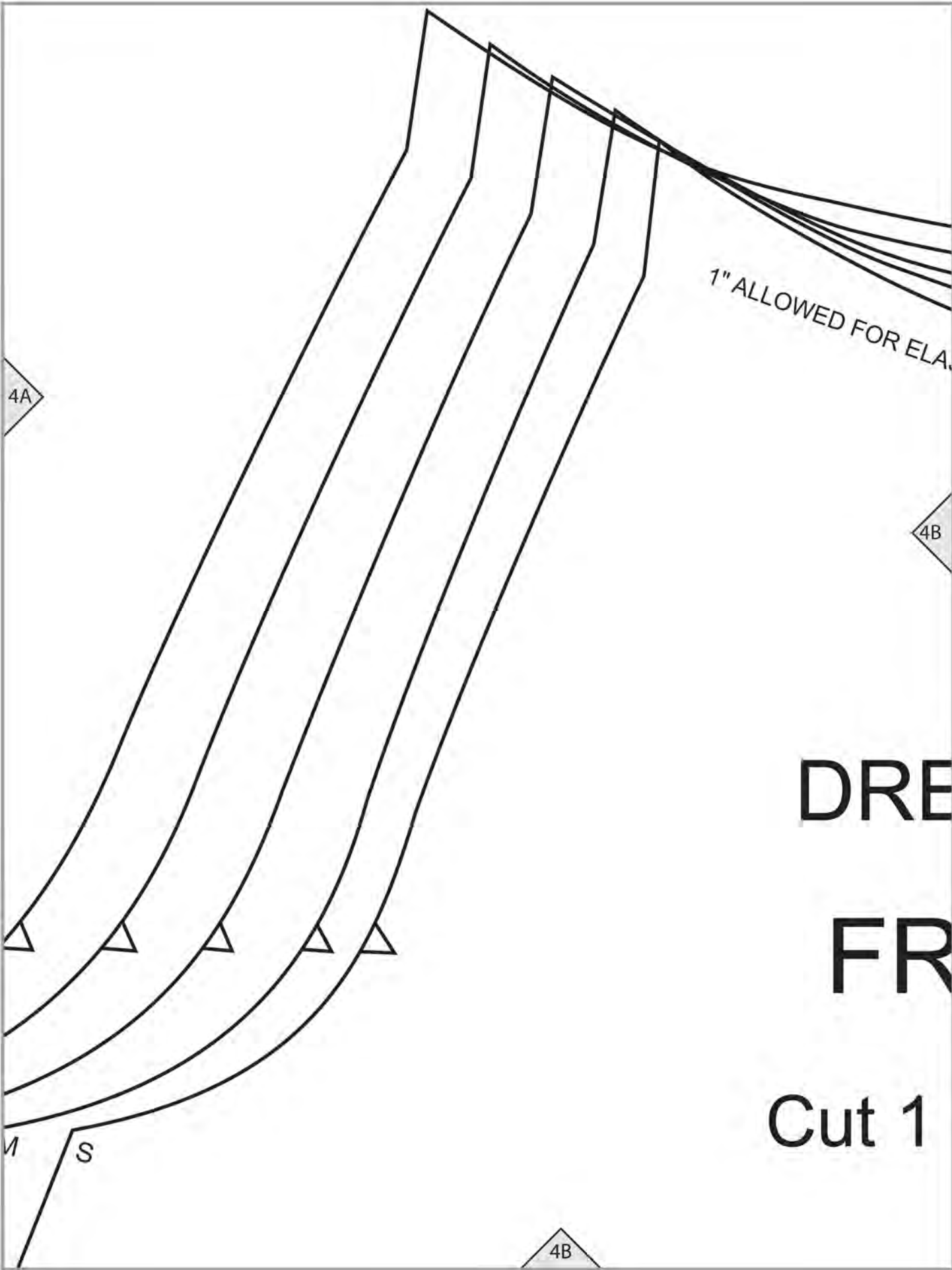
Sewing pattern designs for *The Magic Pattern Book* by Amy Barickman are intended for personal use only, and not as the basis for commercial manufacturing.

Workman Publishing, New York • workman.com

4A

4A





4A

4B

DRE

FR

Cut 1

M

S

4B

1" ALLOWED FOR ELA

STIC CASING C6

XXL
XL
L
M
S

4B

ESS (C)

ONT

on FOLD

TXX

TX

T

W

S

4C

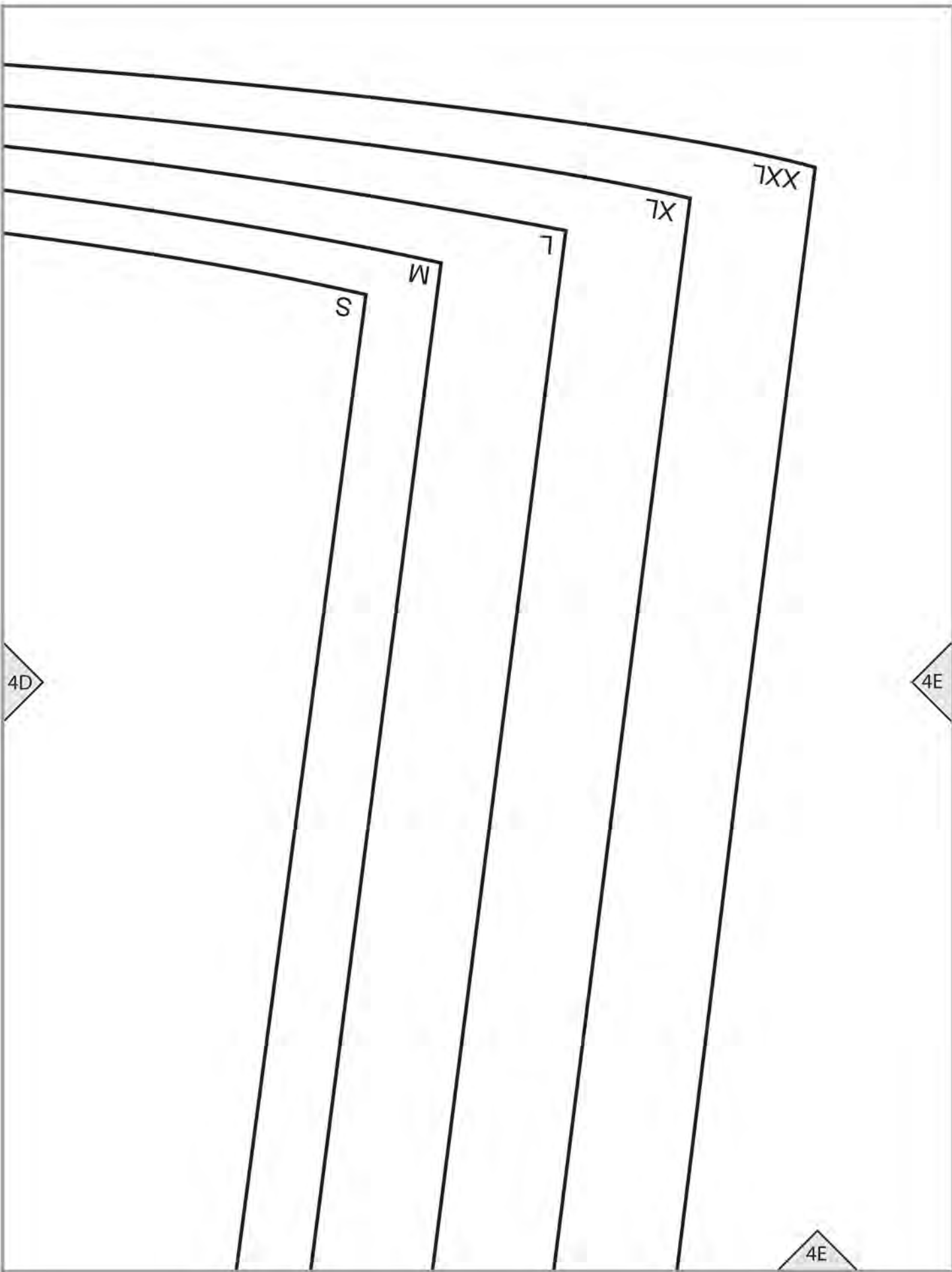
4C

C6 cutting line

4C

4D

4D



THE **MAGIC**  **PATTERN** BOOK

BY AMY BARICKMAN

workman

workman.com

CANDACE (C6)

TEST SQUARE

4" (10 cm)

4E

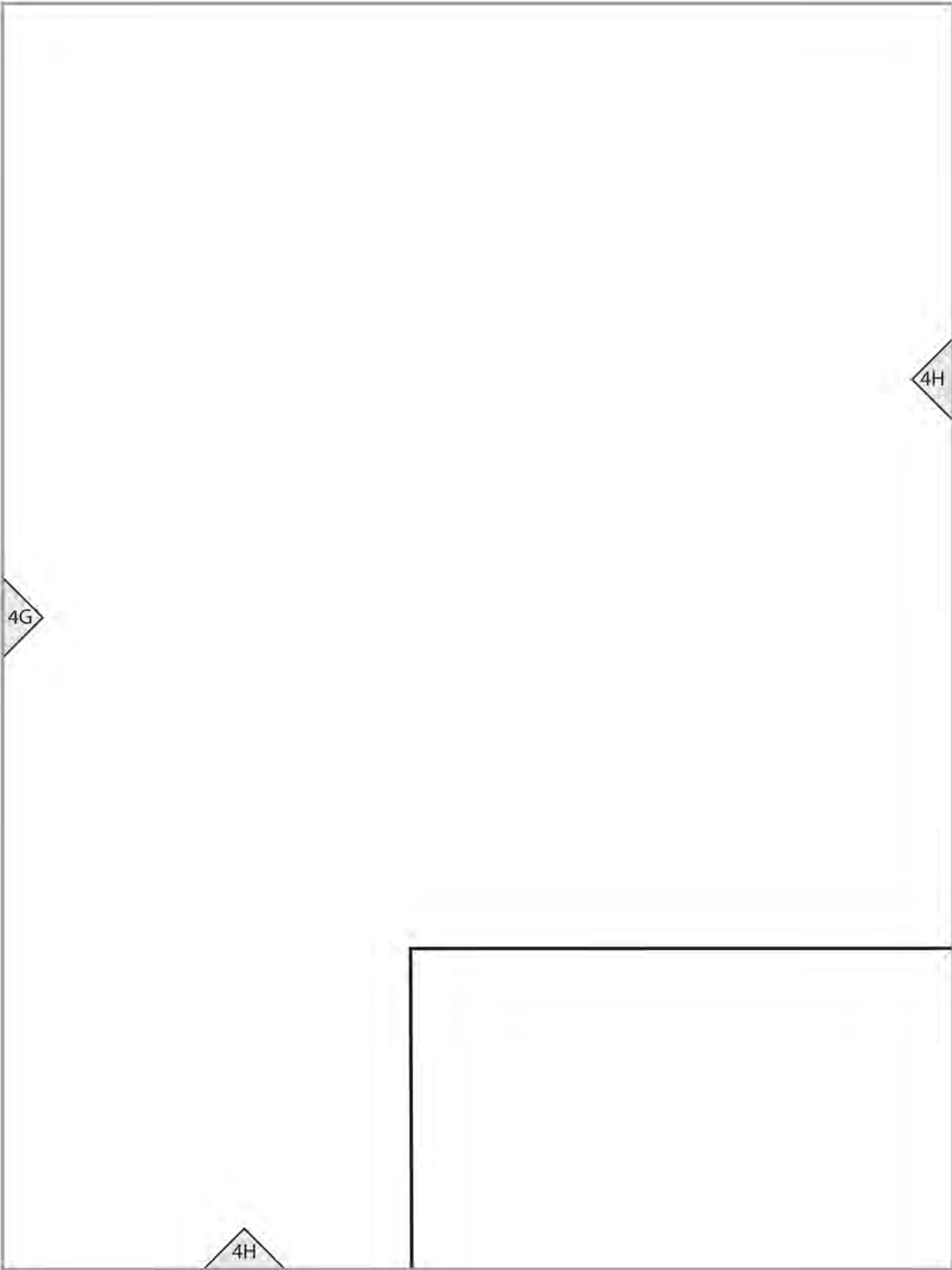
4F

4F

4F

4G

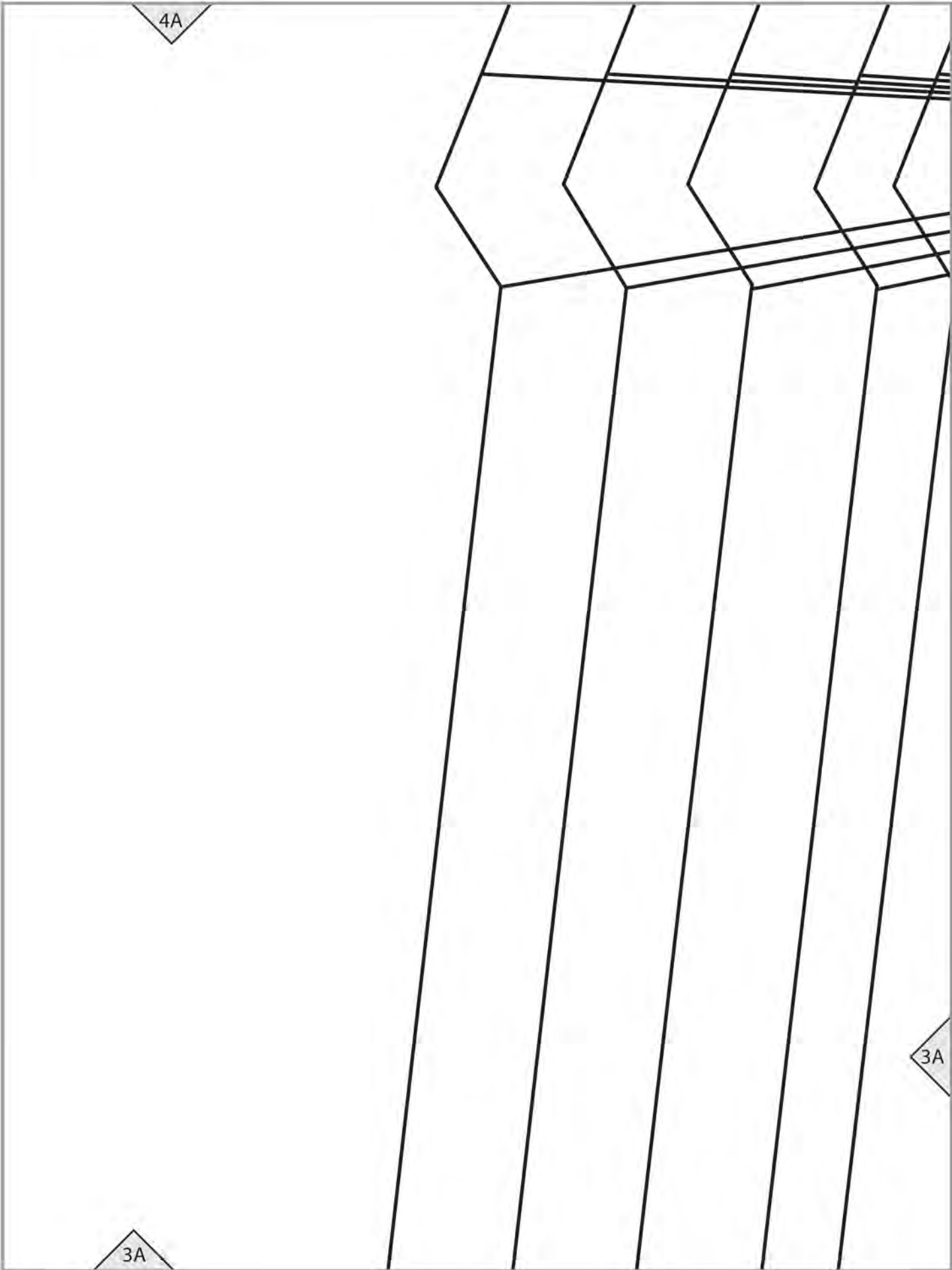
4G



4H



4I



4A

3A

3A

4B

XXL

XL

L

M

S

3B

3A

3B

1

3B

OLD



4C

3C

3C

Place or



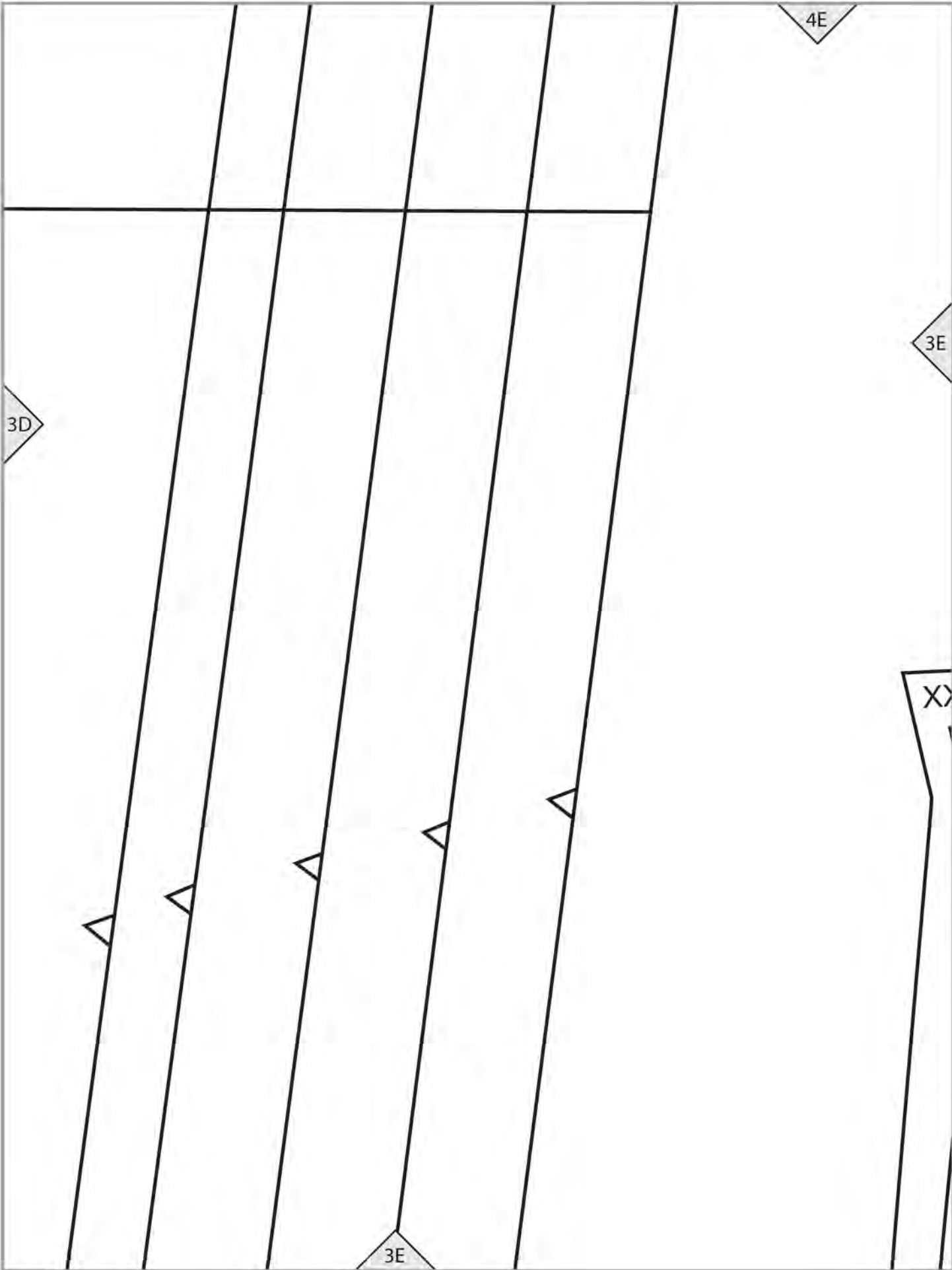
4D

lengthen / shorten line

3D

3C

3D



4F

3E

3F

KL

XL

L

M

S

1" allowed for elastic casing C6

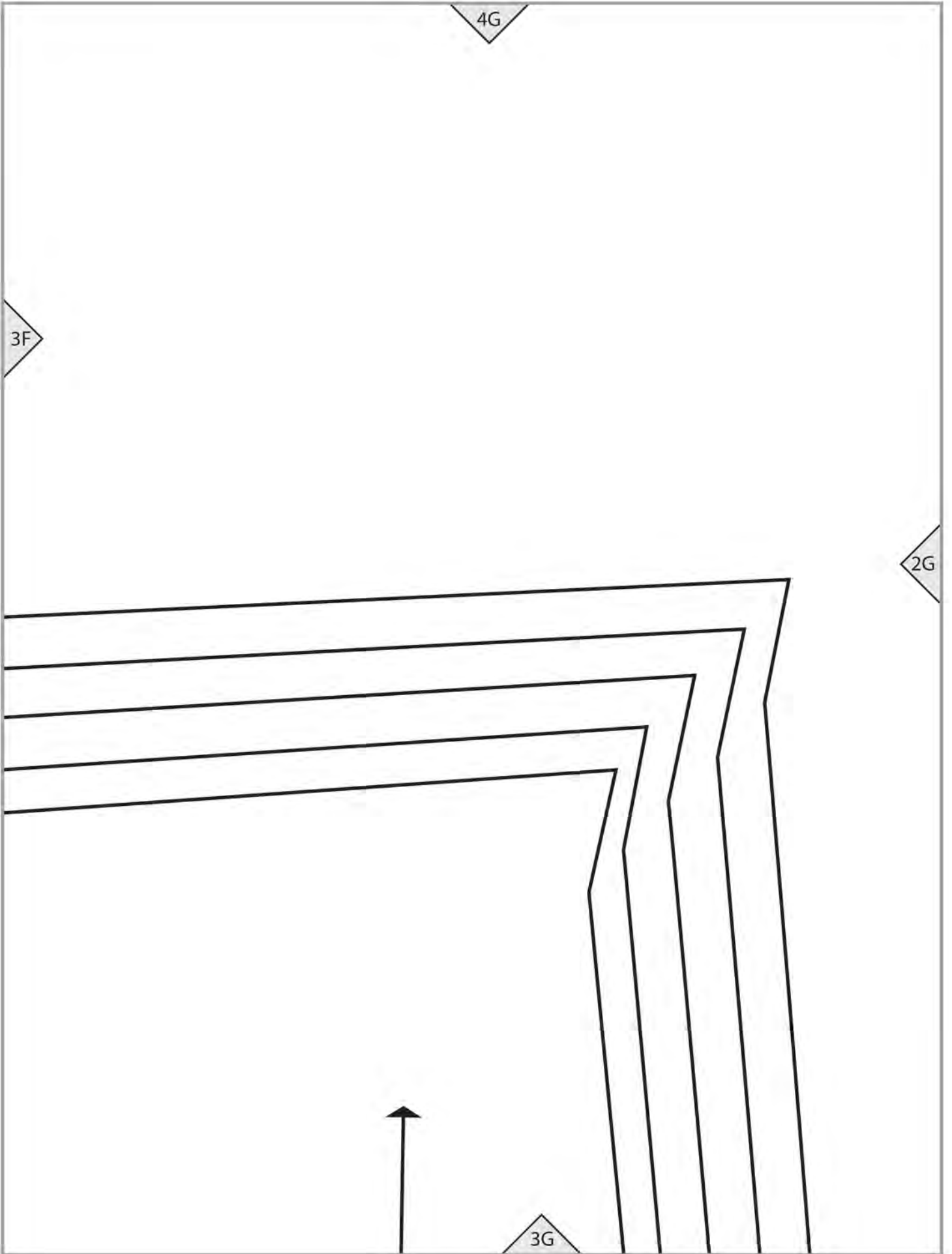
3F

4G

3F

2G

3G



4H

2G

2H

13

3H

DRESS (C)

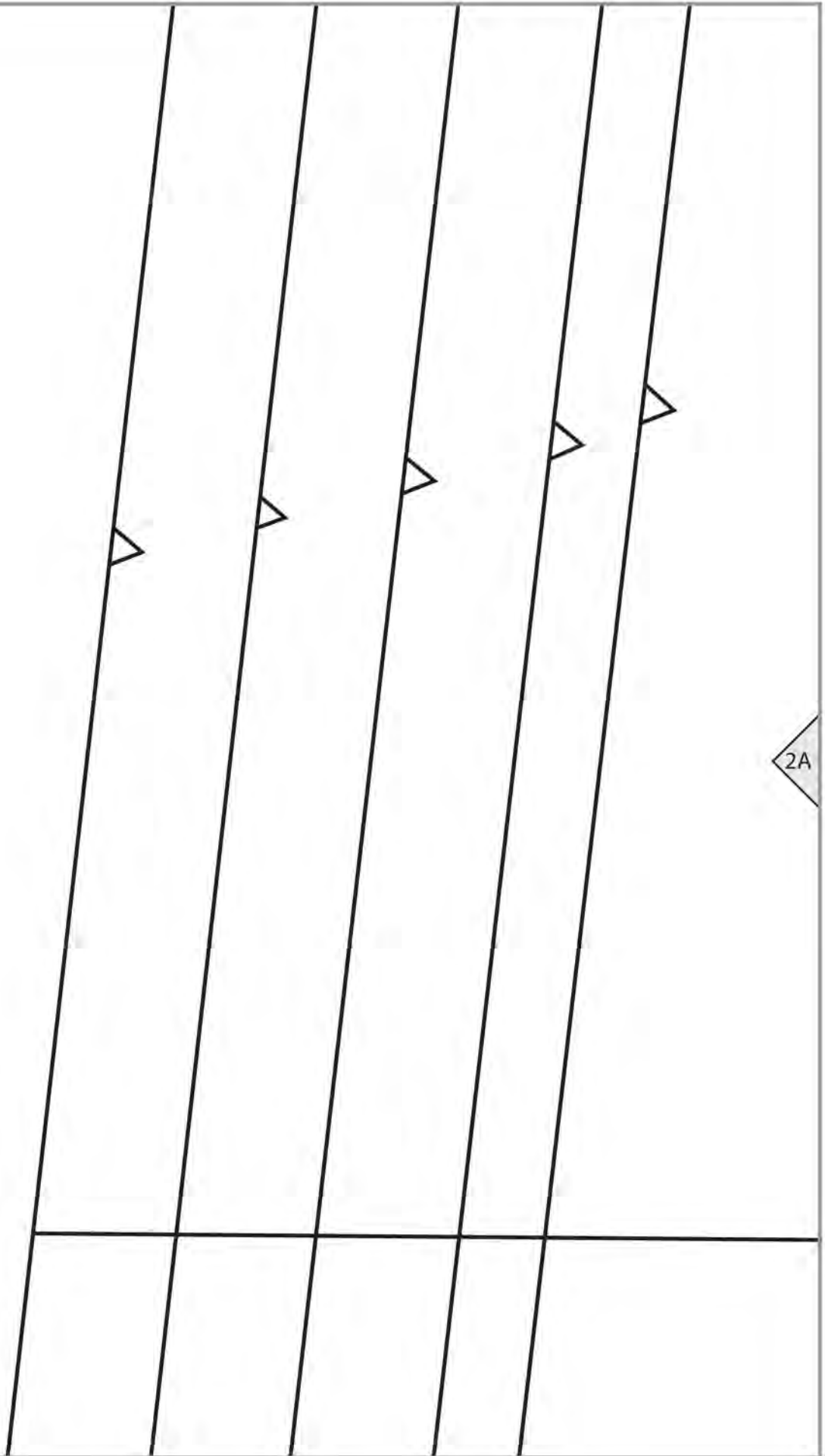
RUFFLE

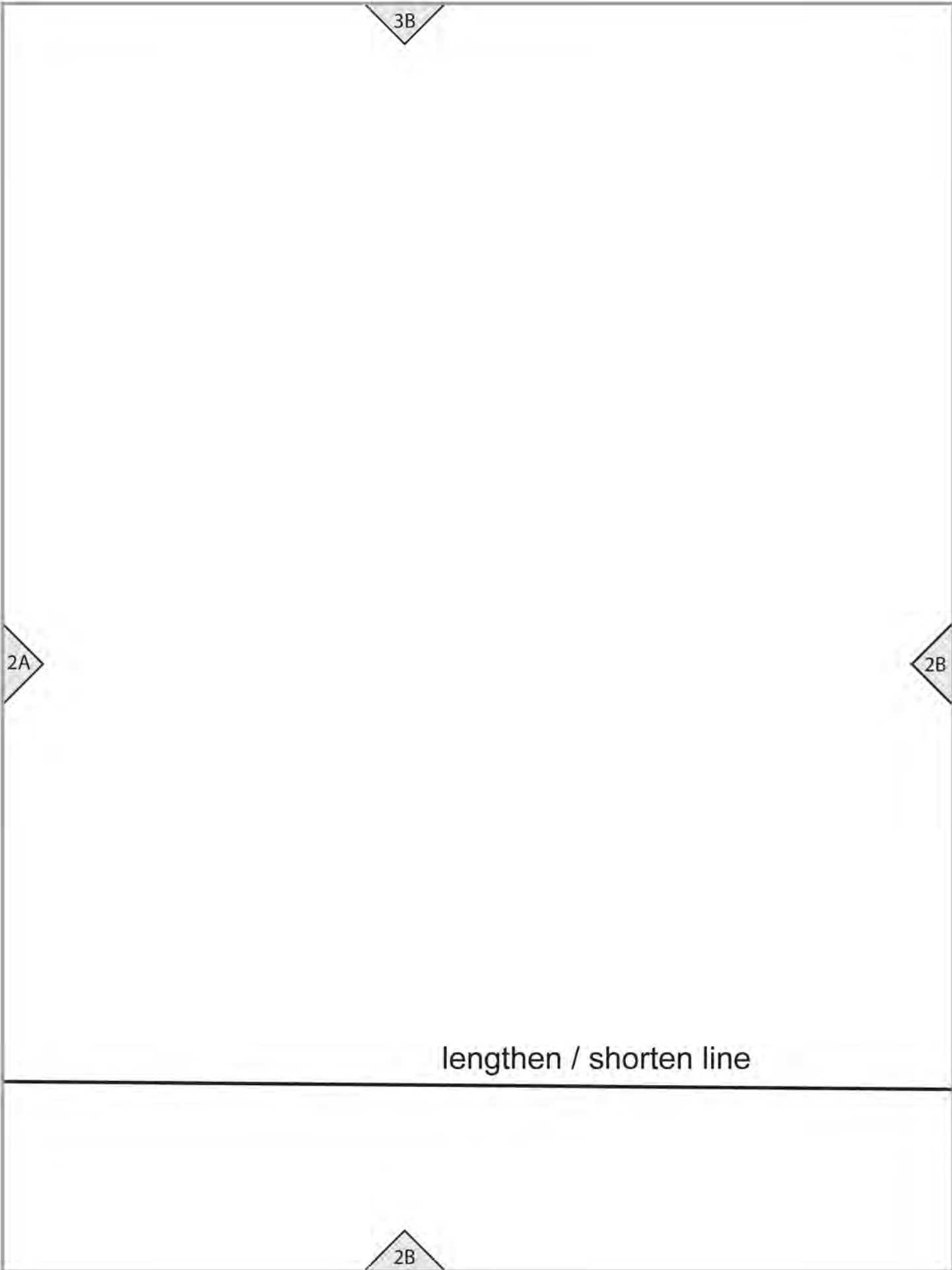
Cut 2

3A

2A

2A





Place on FOLD

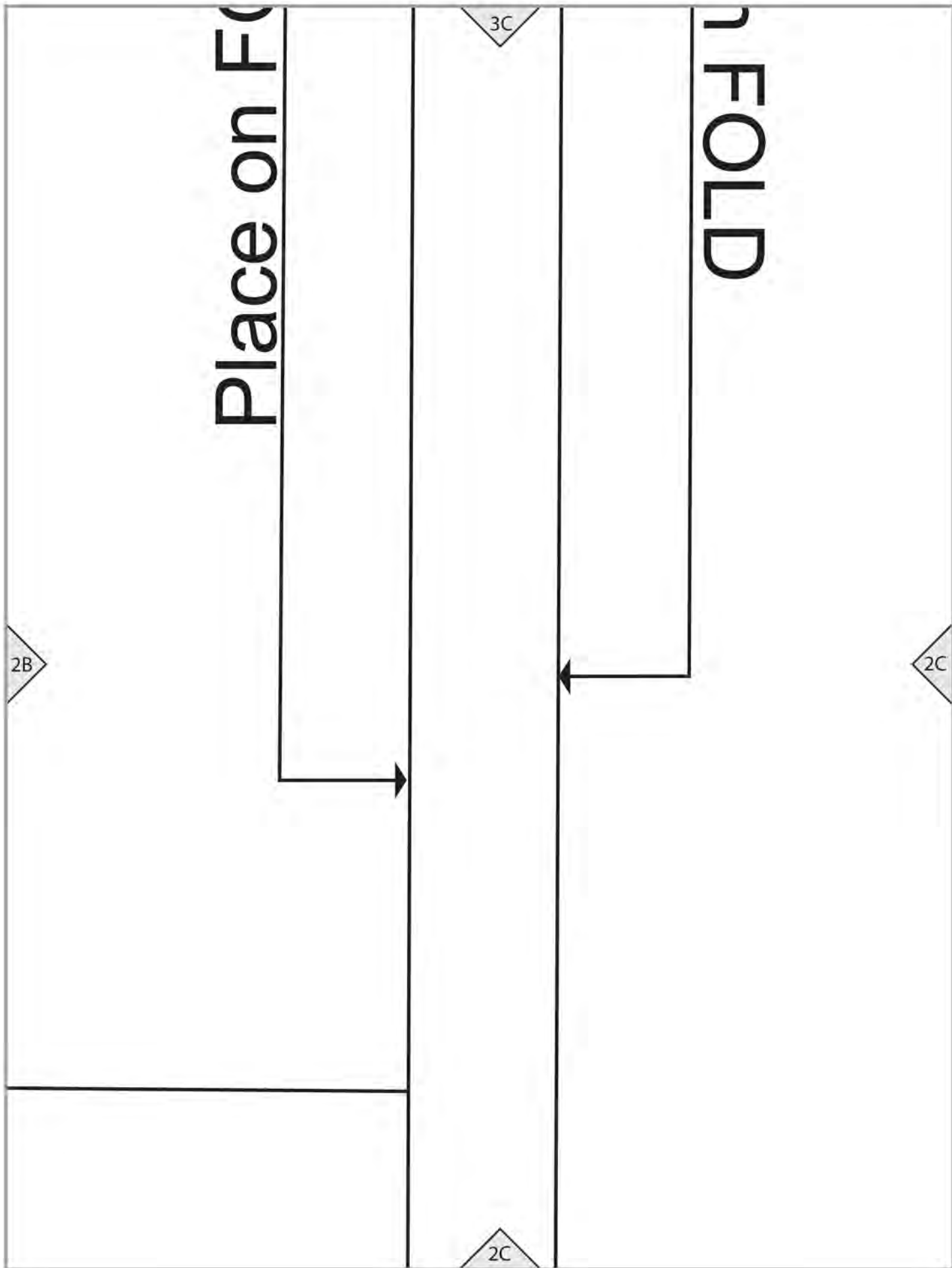
FOLD

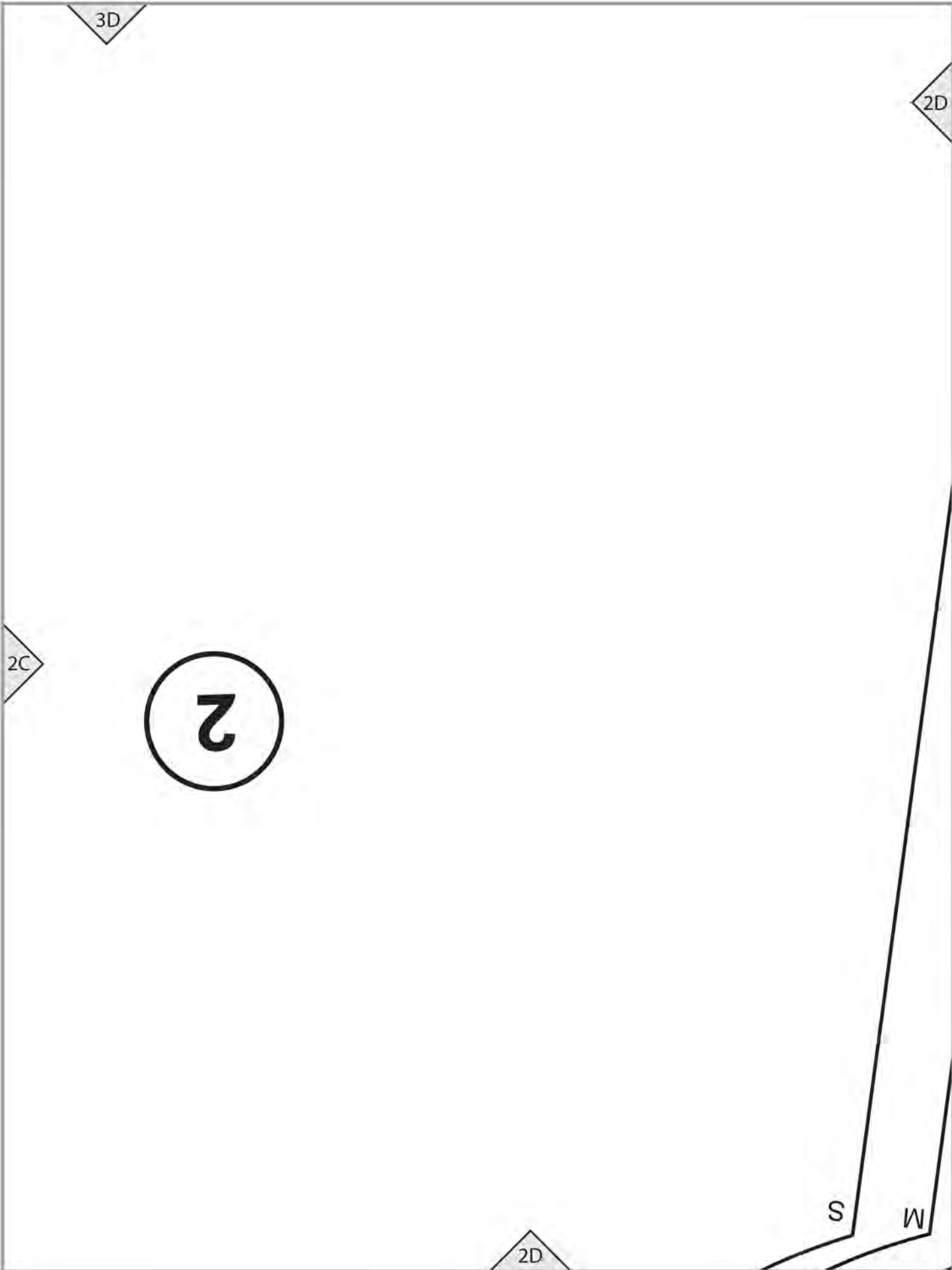
2B

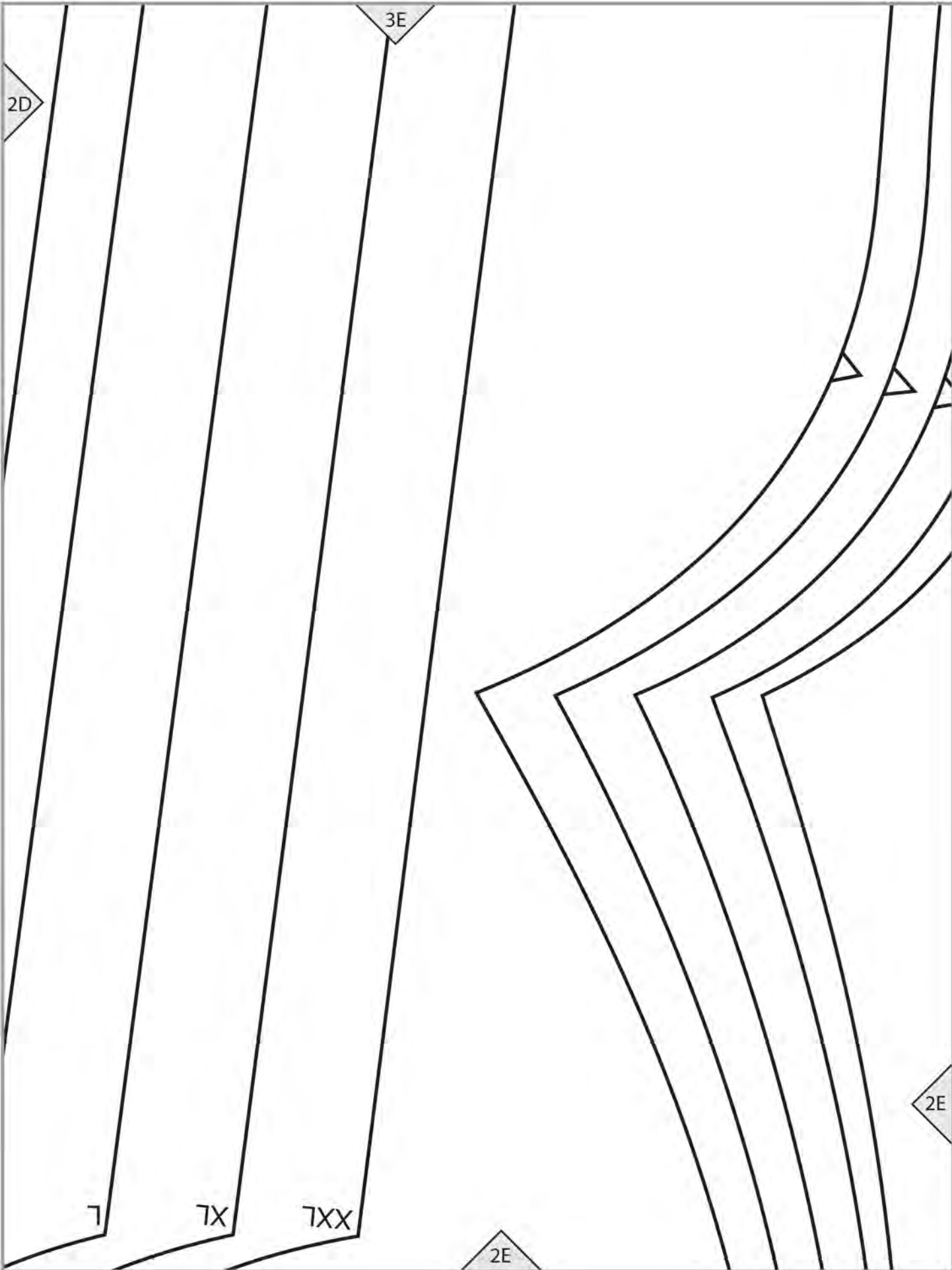
2C

3C

2C







3F

DRESS (C)

SLEEVE

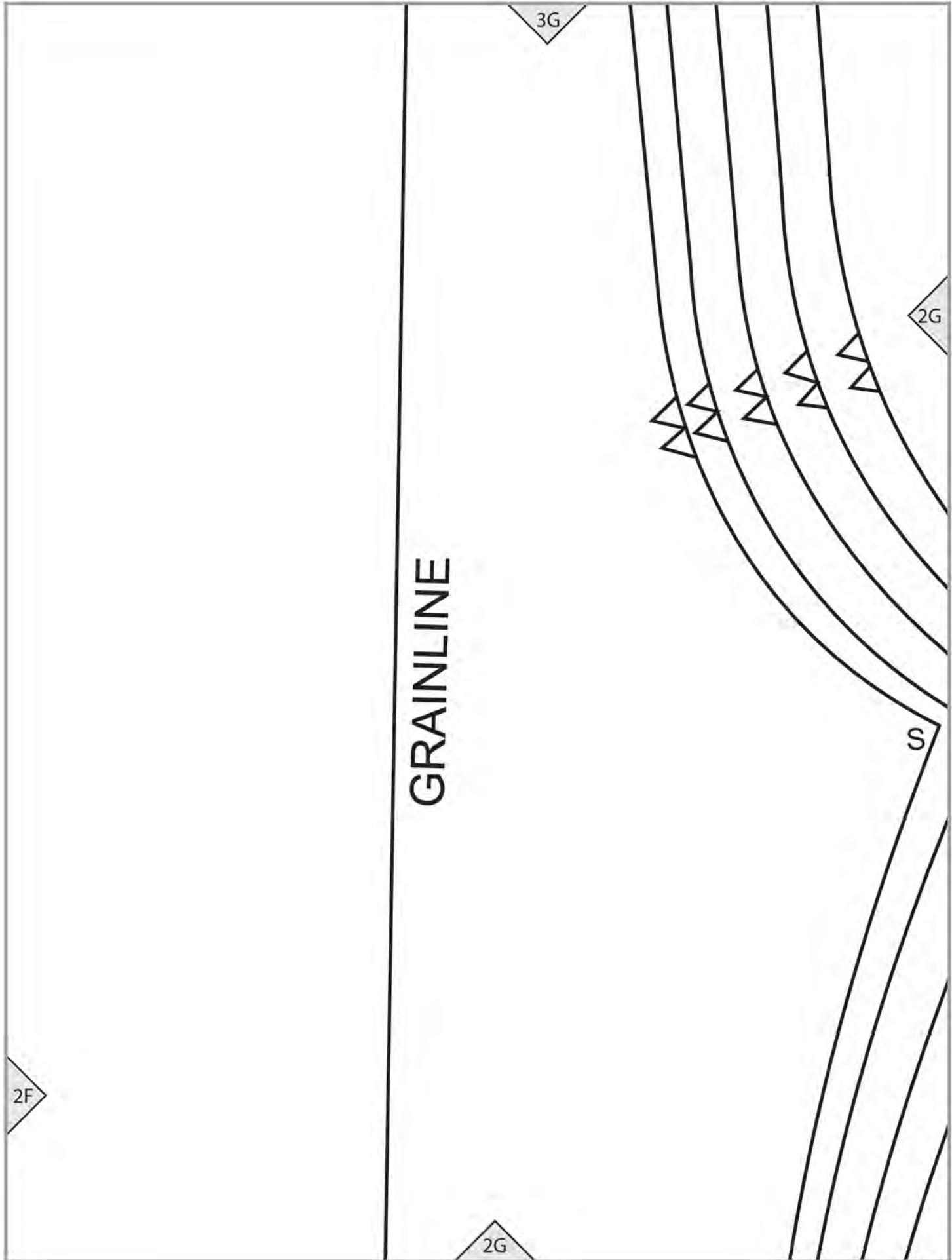
Cut 2

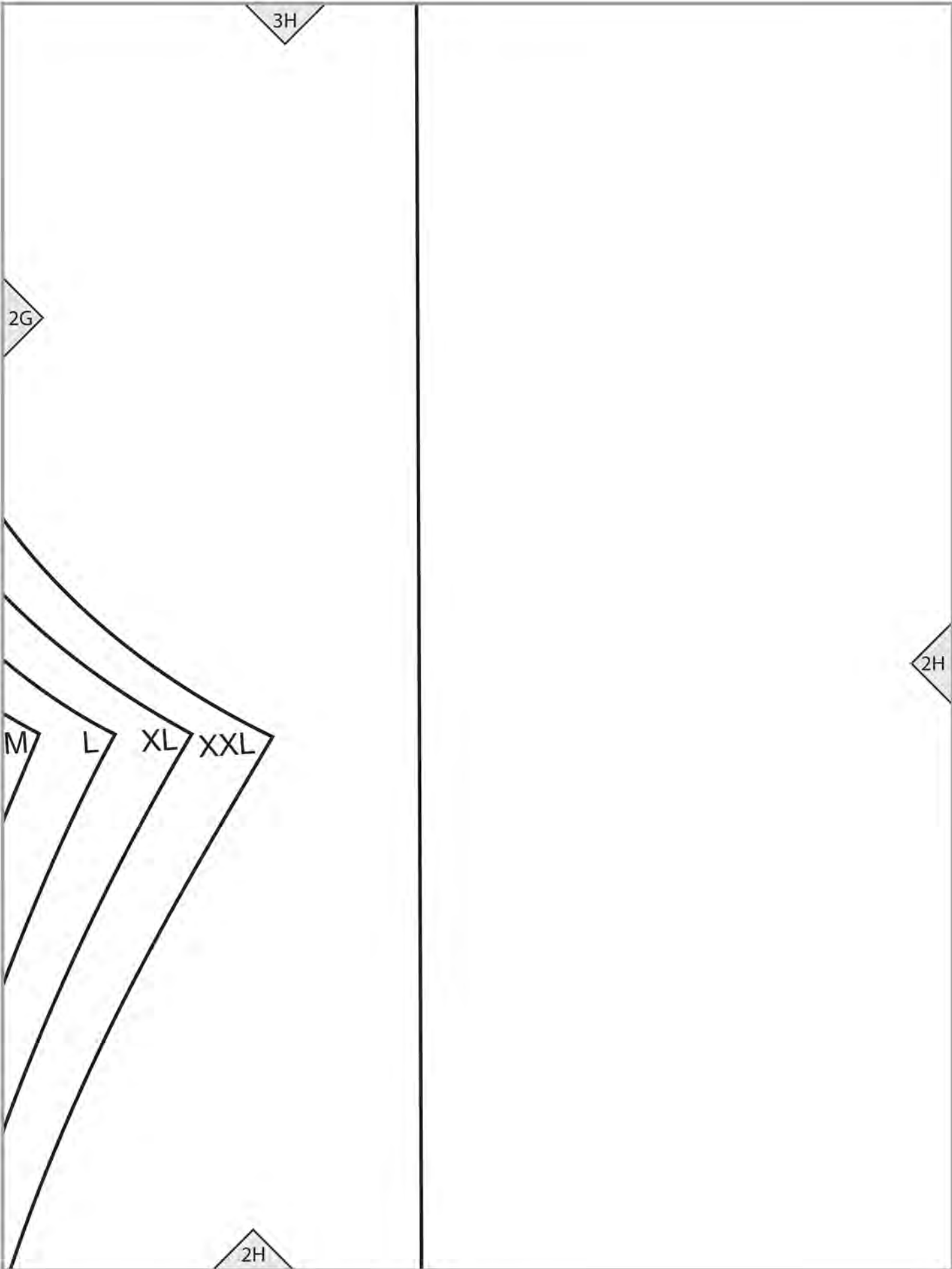
3

2E

2F

2F





3H

2G

M

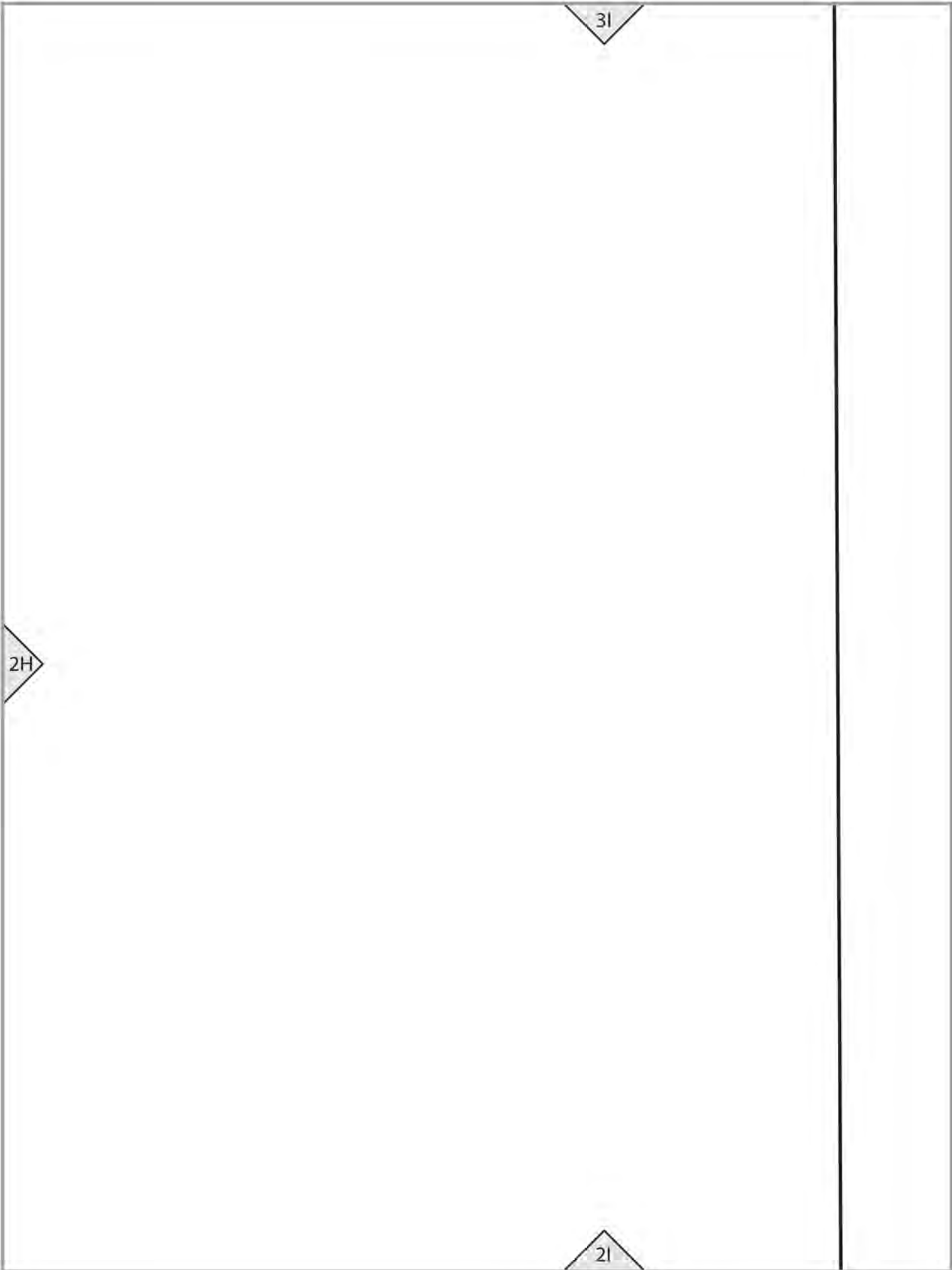
L

XL

XXL

2H

2H



2A

1A

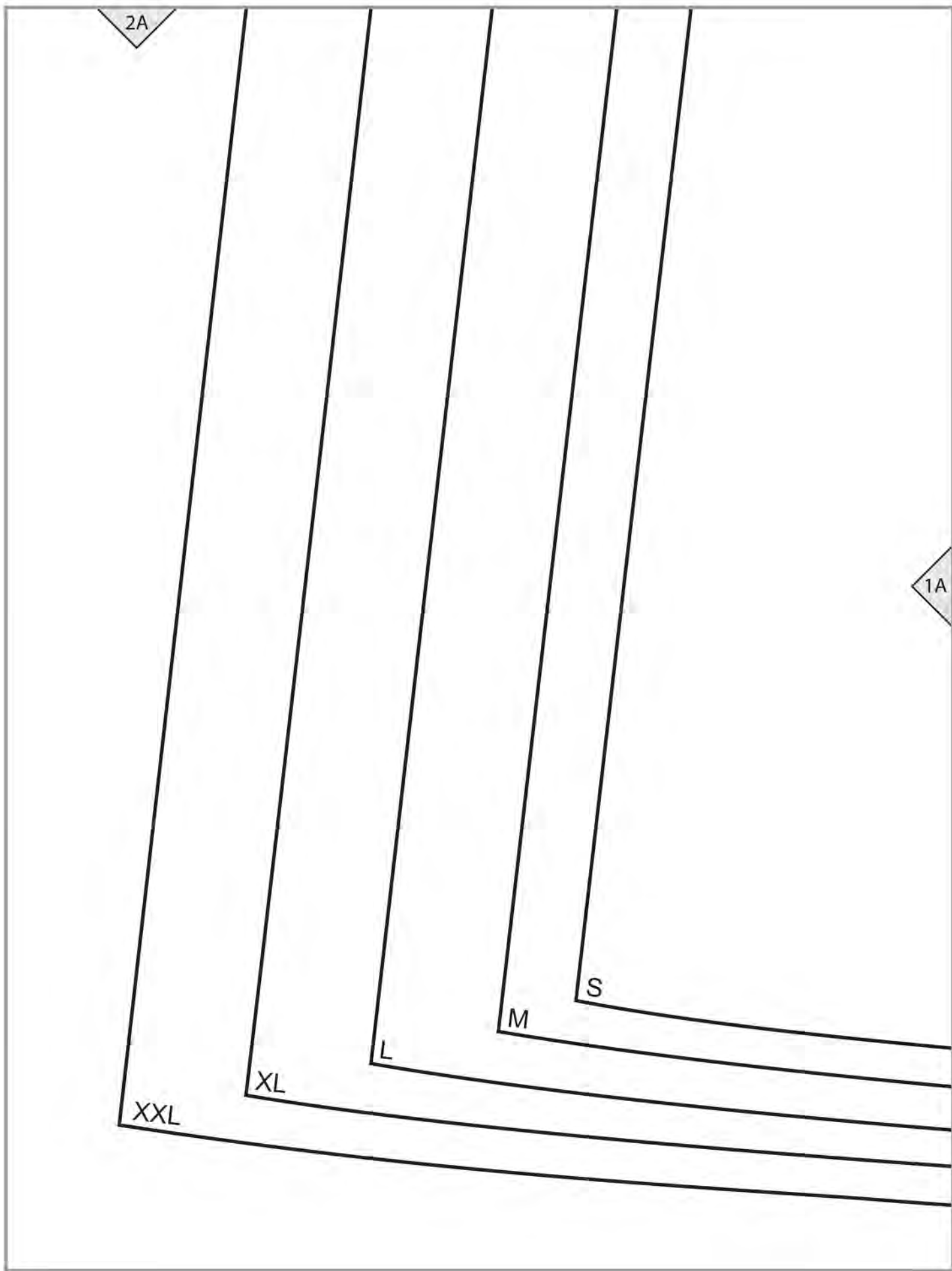
XXL

XL

L

M

S

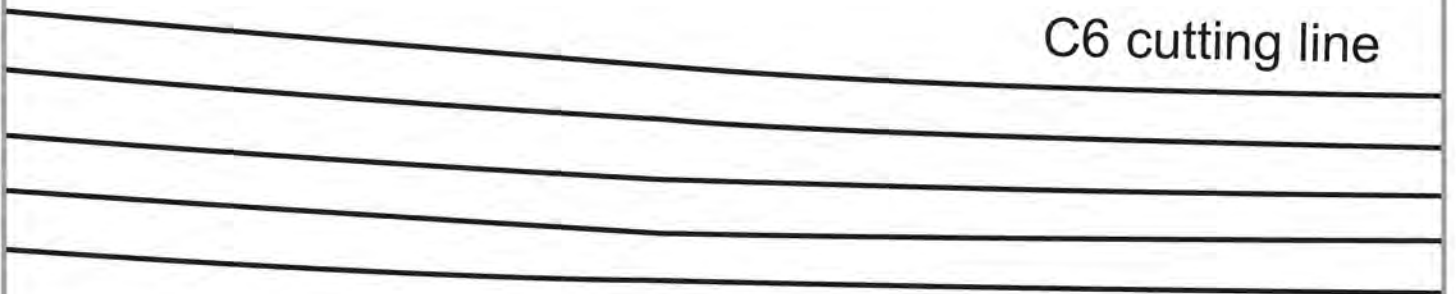


2B

1A

1B

C6 cutting line



2C

FOLD
CK
S (C)

1B

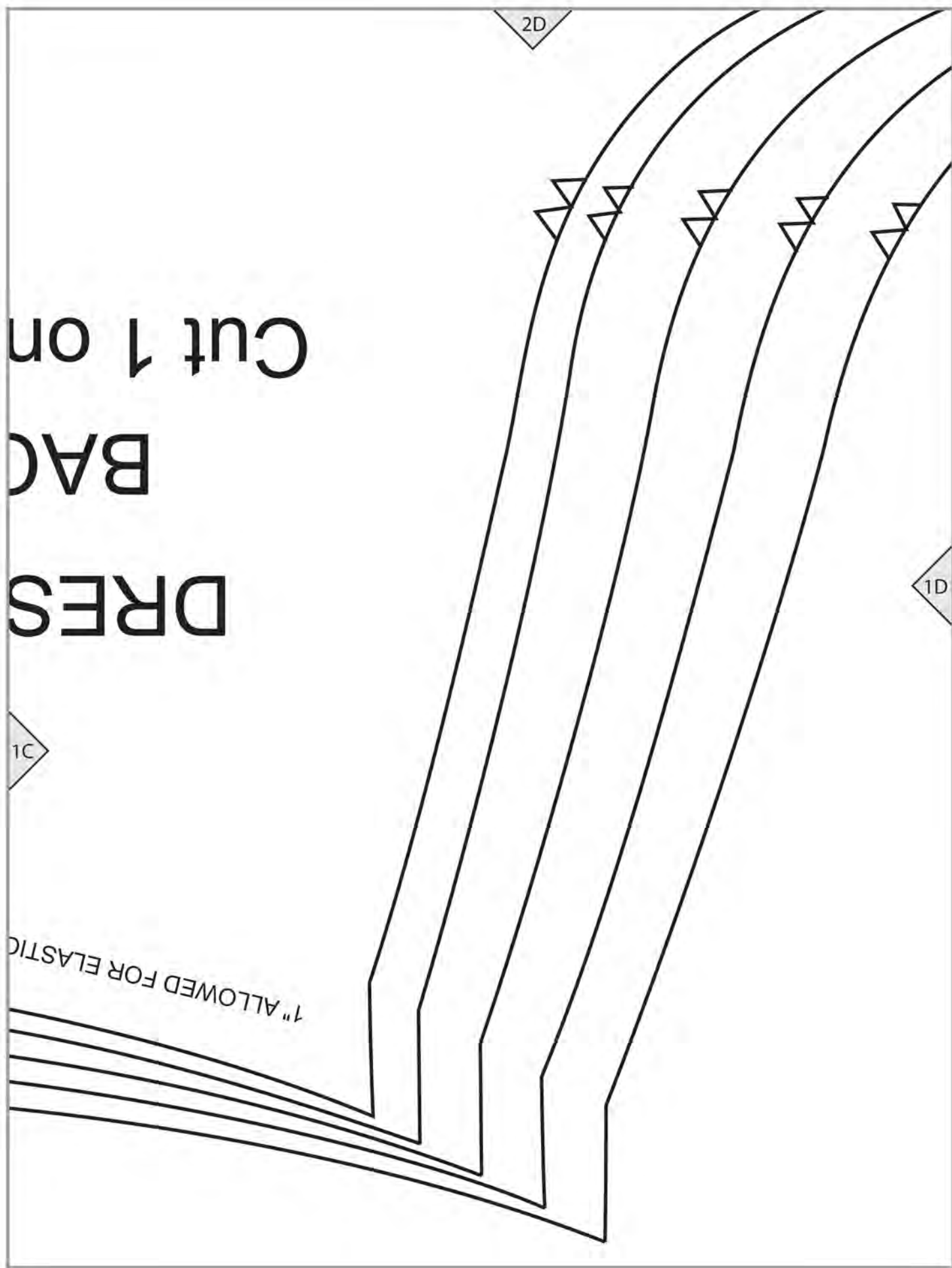
1C

CASING C6

S
M
L
TX
LXX

Four horizontal lines for data entry.

Four horizontal lines for data entry, corresponding to the labels S, M, L, TX, LXX.



**DRESS
BACK**
Cut 1 on

2D

1D

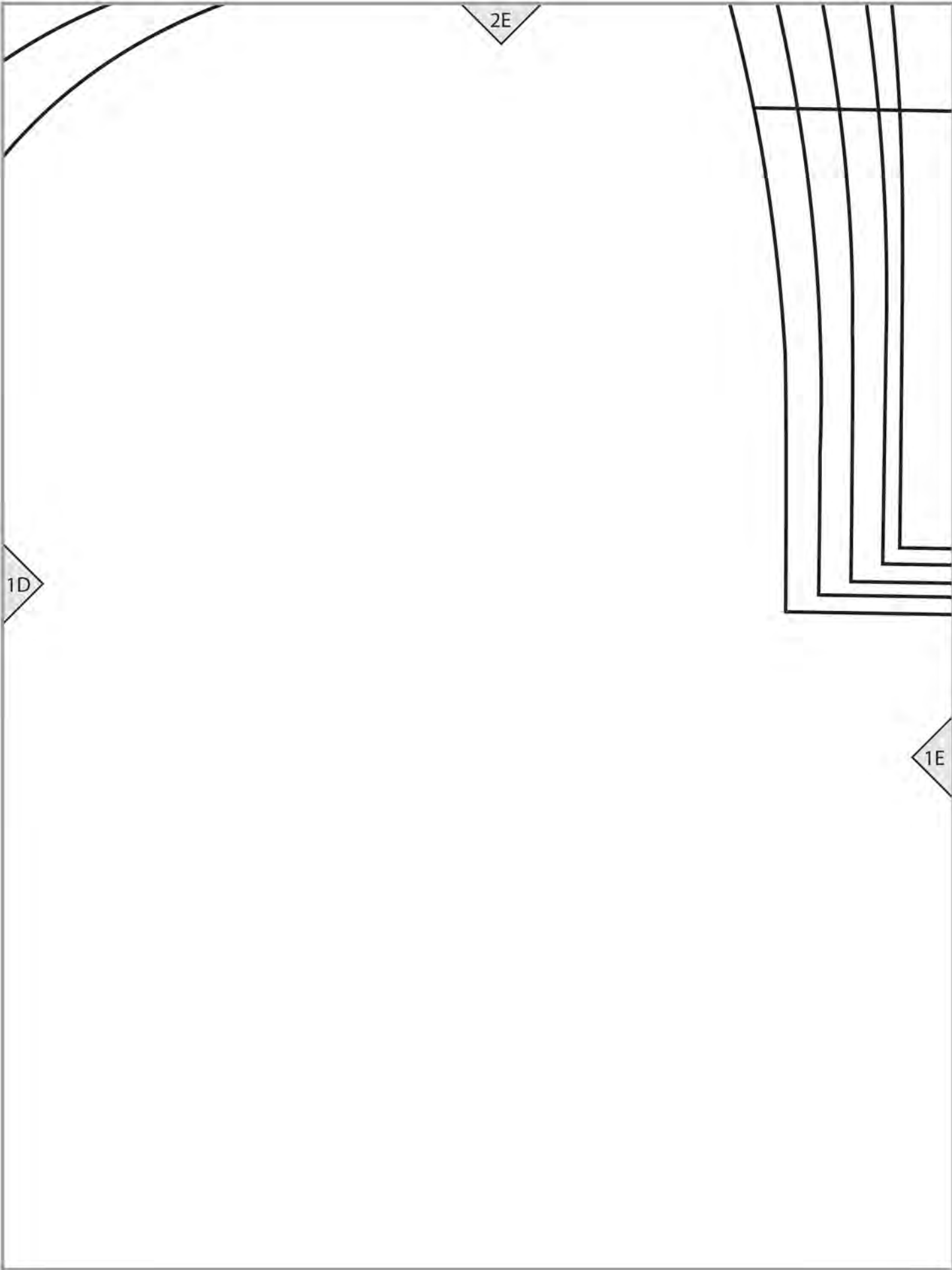
1C

1" ALLOWED FOR ELASTIC

2E

1D

1E



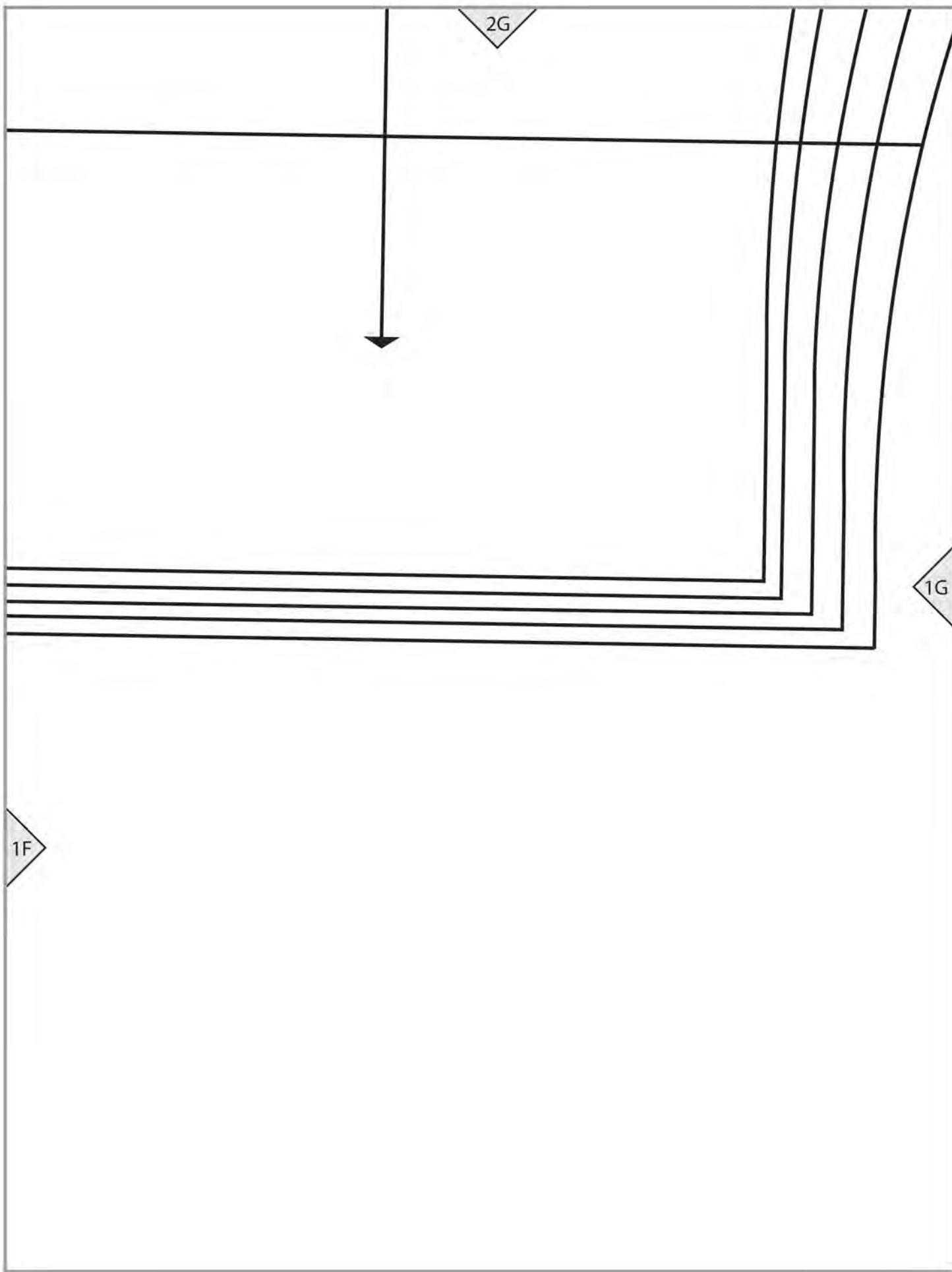
2F

lengthen / shorten line

C6 cutting line

1E

1F



2H

1G



S

M

L

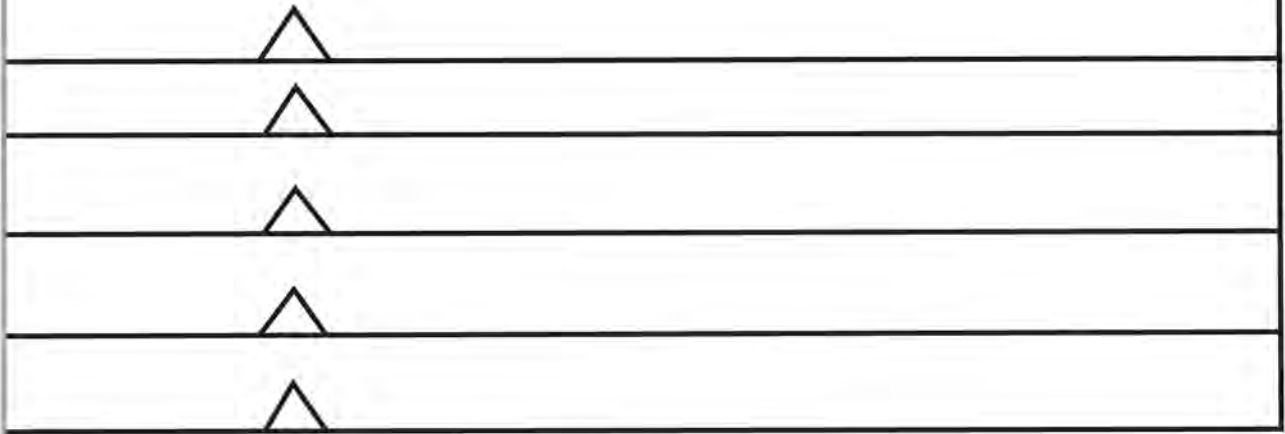
XL

XXL

1H

21

GRAINLINE



1H