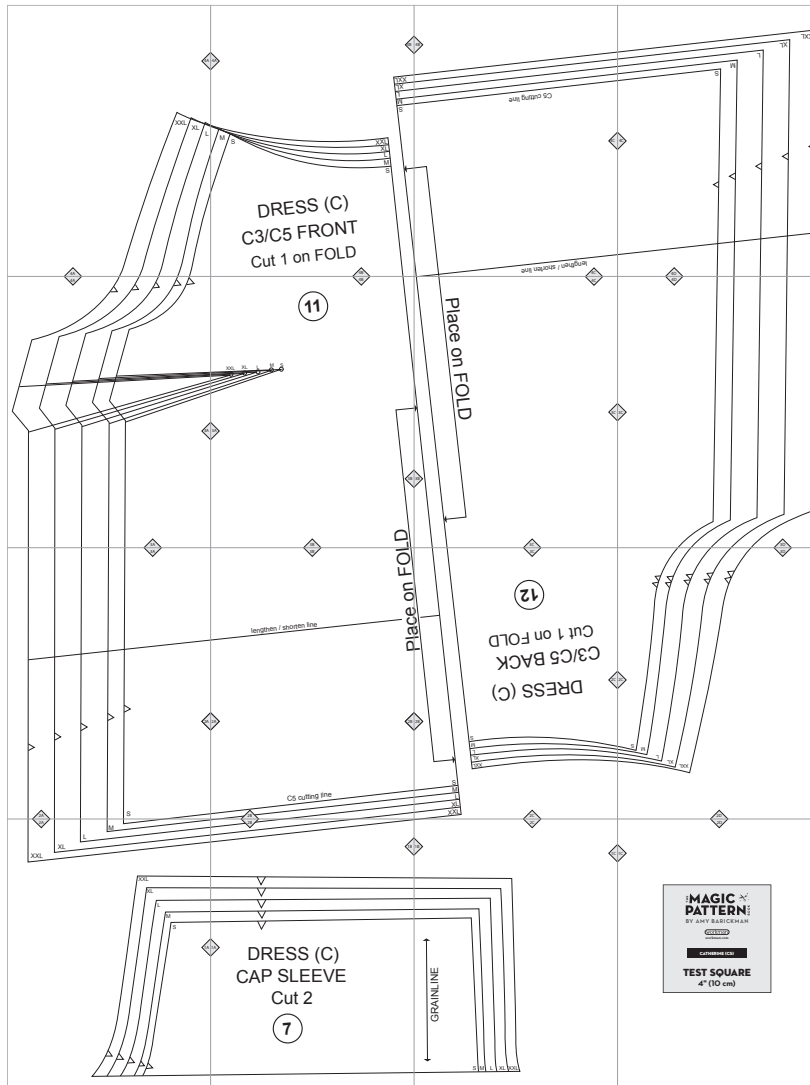


C5. Catherine



Copyright ©2014 by Amy Barickman

All rights reserved. Amy Barickman's patterns may be printed for personal use, but may not be otherwise reproduced—mechanically, electronically, or by any other means, including photocopying—without written permission of the publisher.

Sewing pattern designs for *The Magic Pattern Book* by Amy Barickman are intended for personal use only, and not as the basis for commercial manufacturing.

Workman Publishing, New York • workman.com

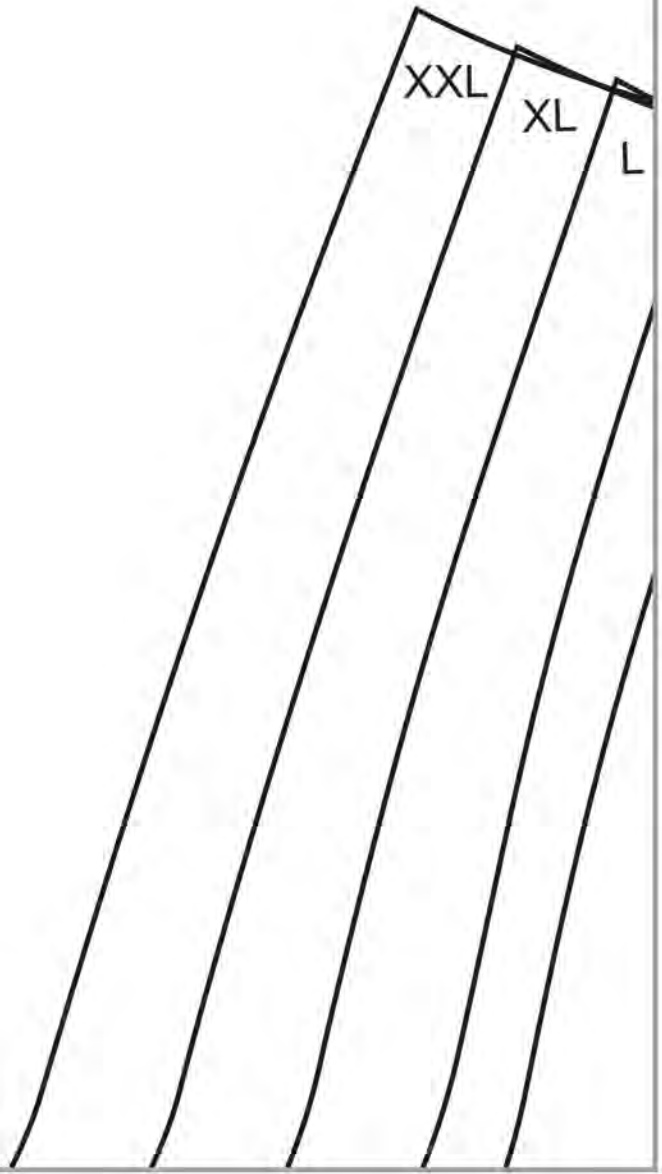
4A

XXL

XL

L

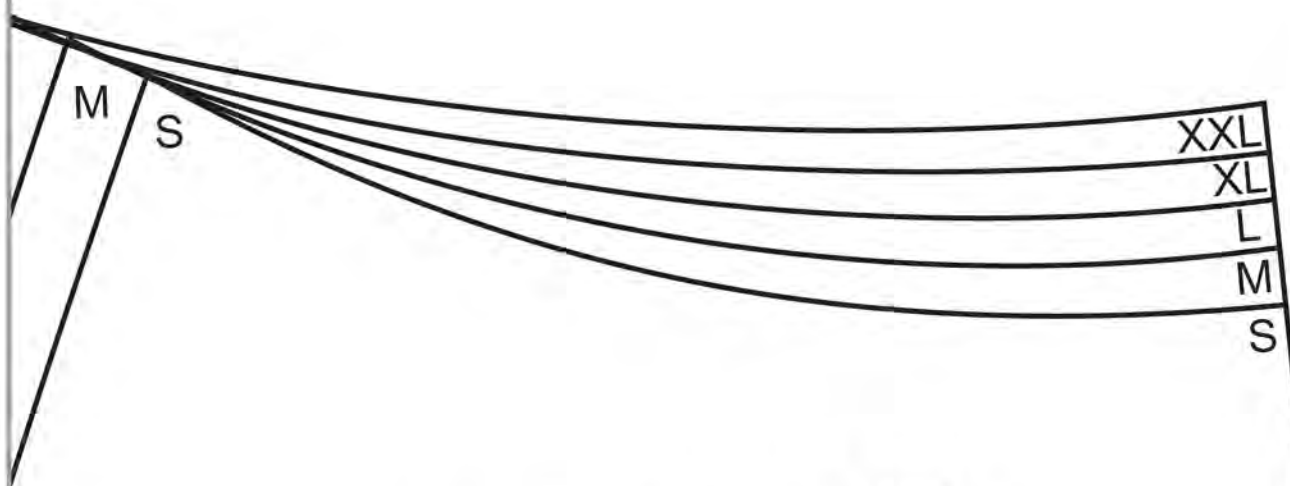
4A



4A

4B

XXX
XX
X
M
S



DRESS (C)
C3/C5 FRONT
Cut 1 on FOLD

4B

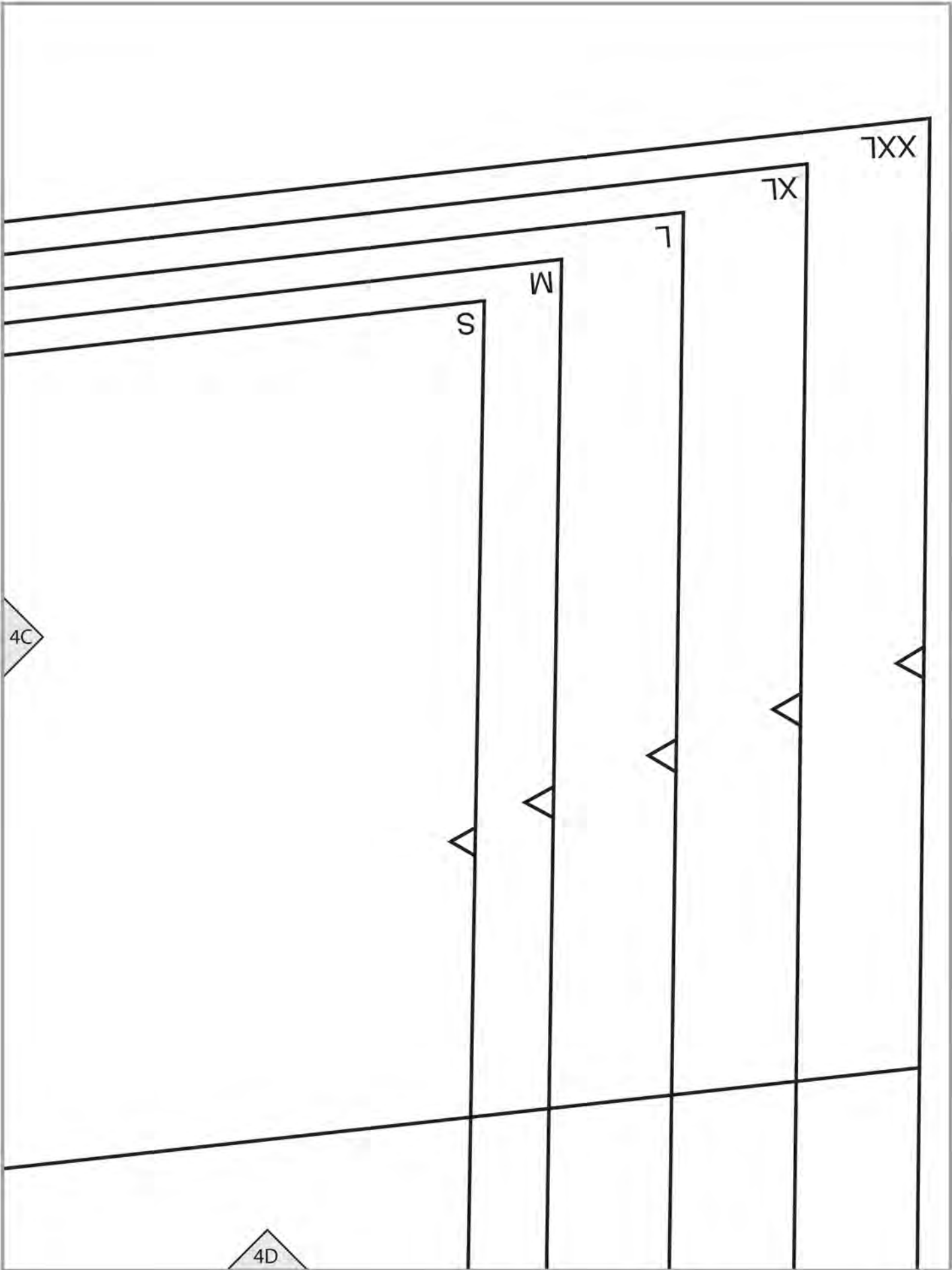
4B

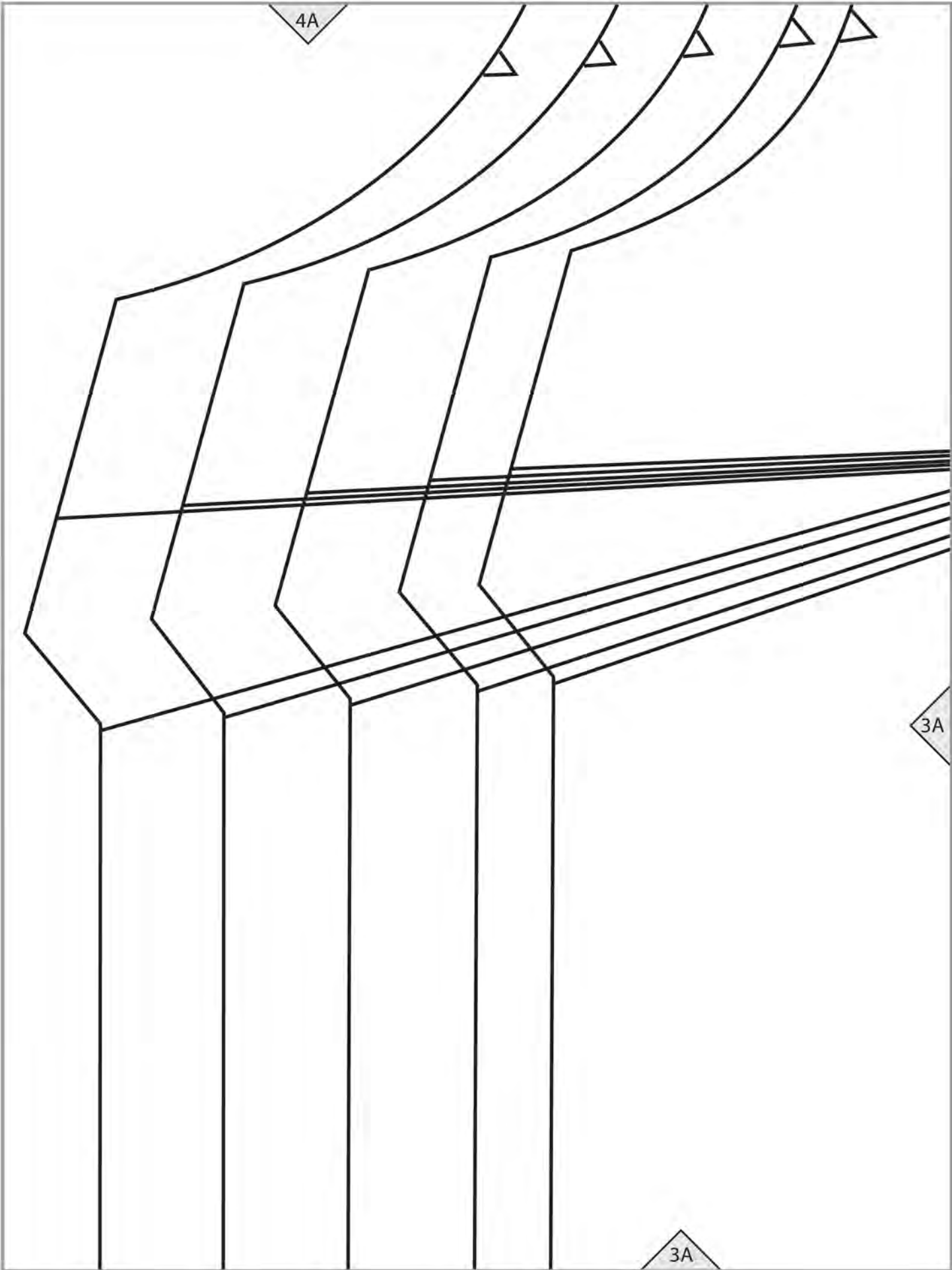
C5 cutting line

4C

lengthen / shorten line

4C





4A

3A

3A

11

4B

XXL

XL

L

M

S

3A

3B

3B

D

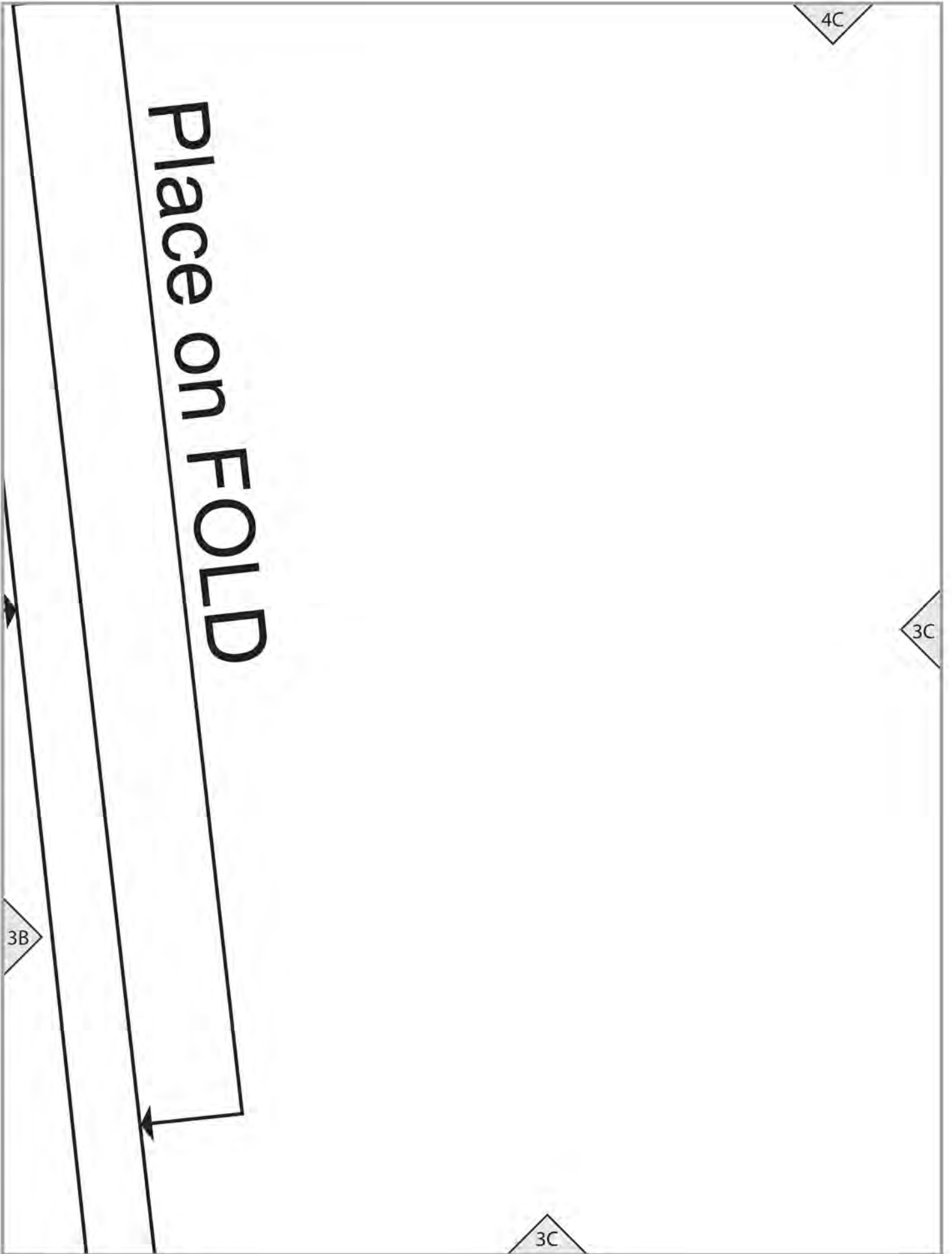
Place on FOLD

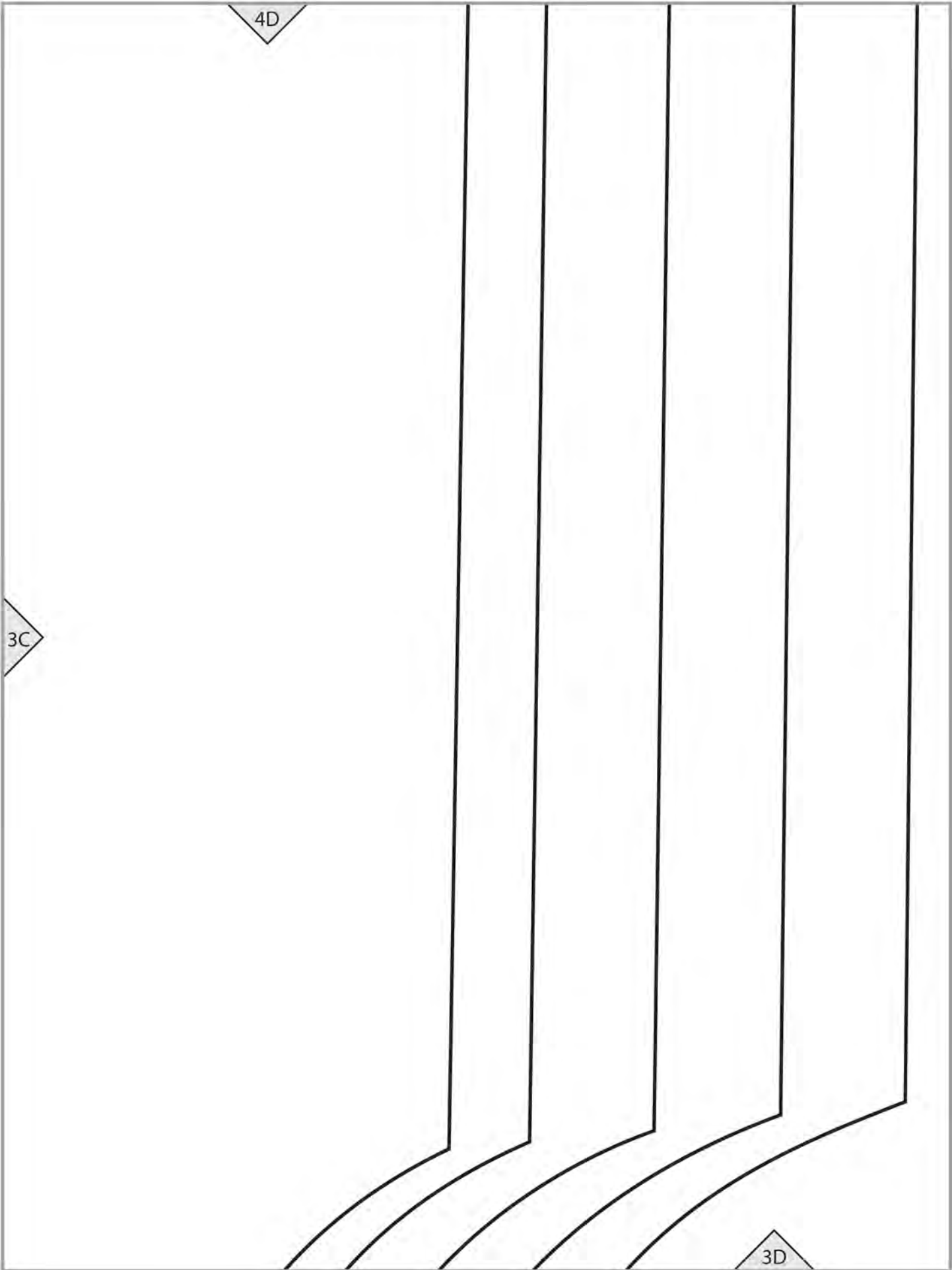
4C

3C

3B

3C

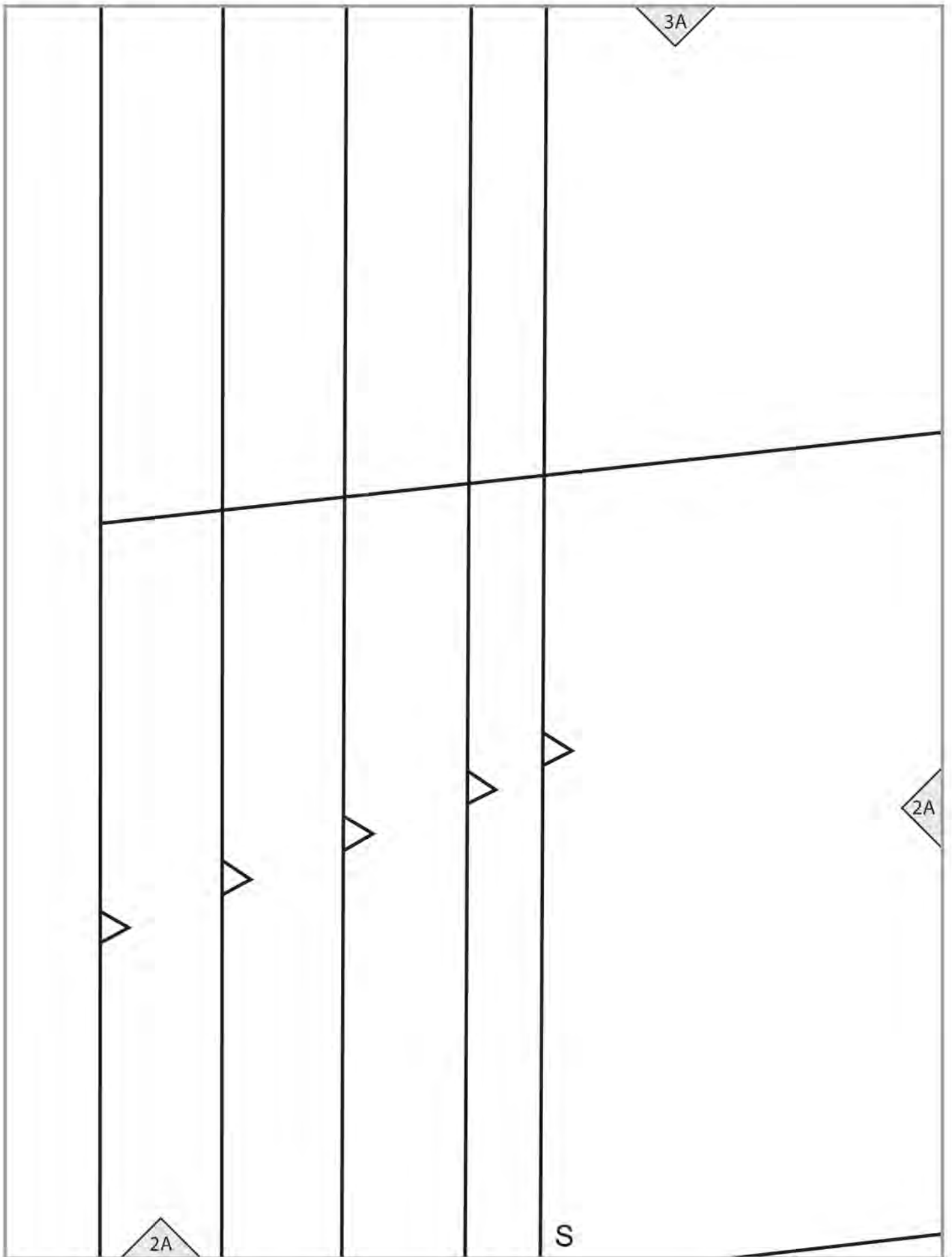




4D

3C

3D



3B

lengthen / shorten line

Place on FOI

2A

2B

C5 cutting line

2B

3C

12

DRESS (C)
C3/C5 BACK
Cut 1 on FOLD

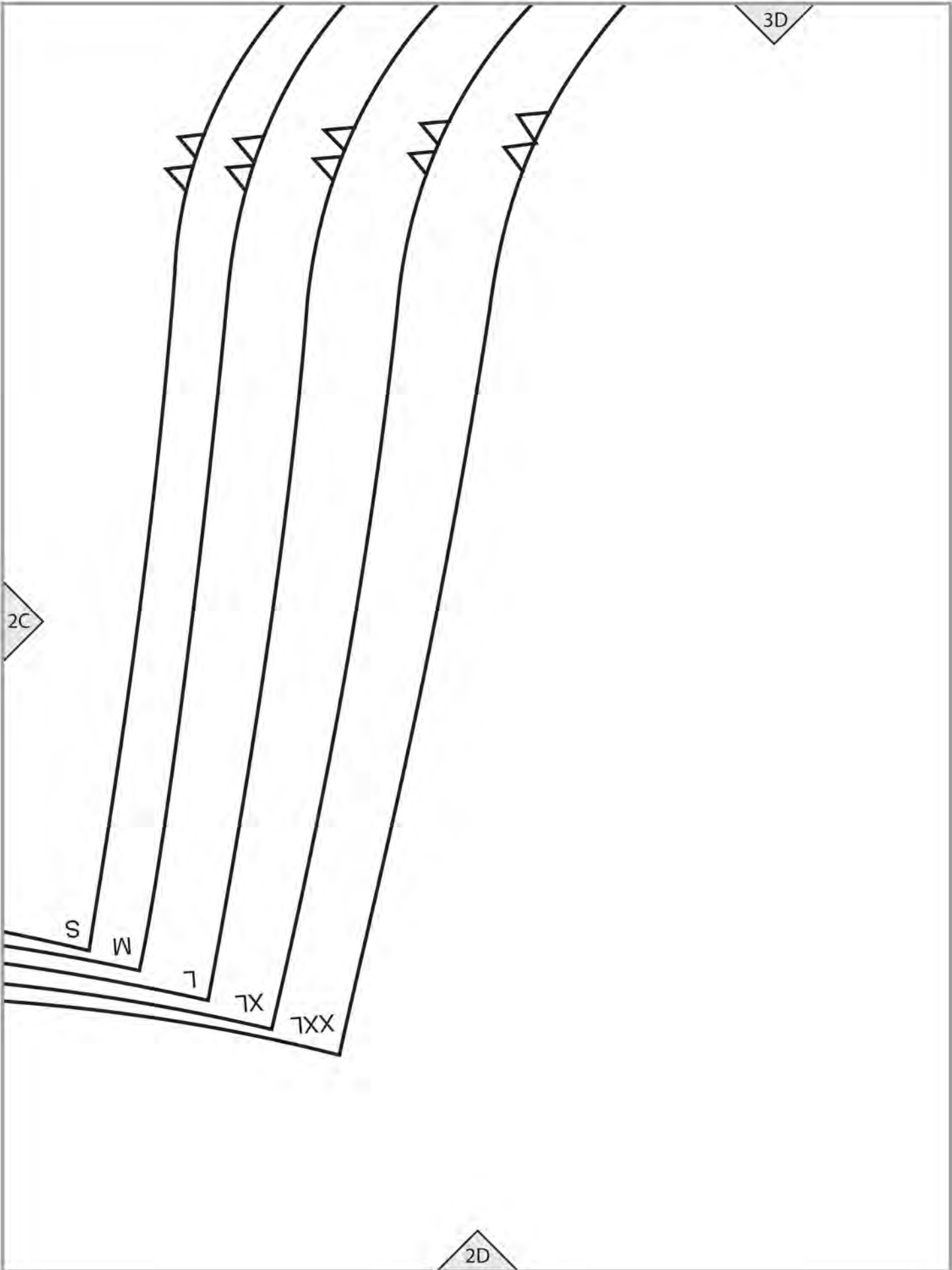
2C

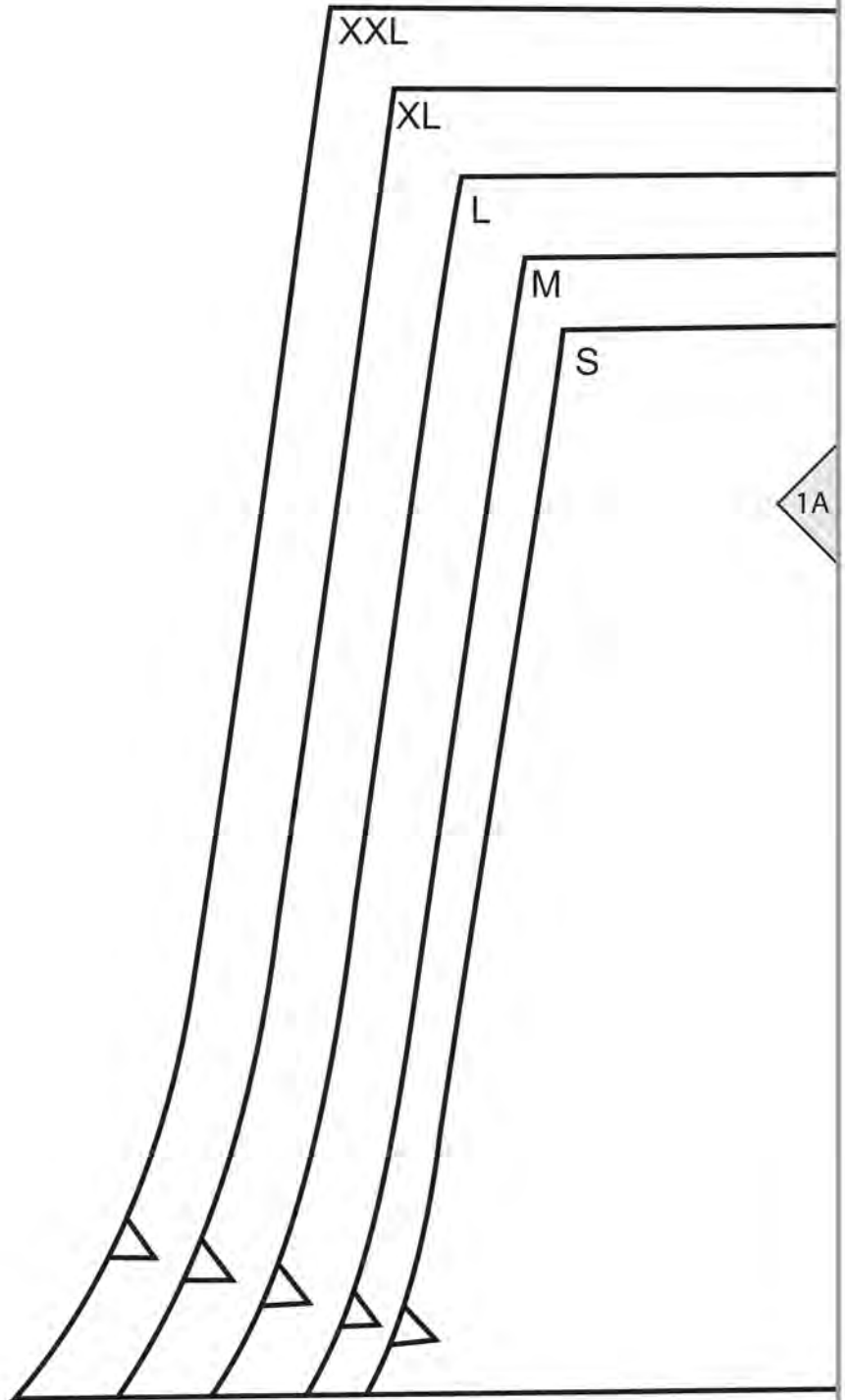
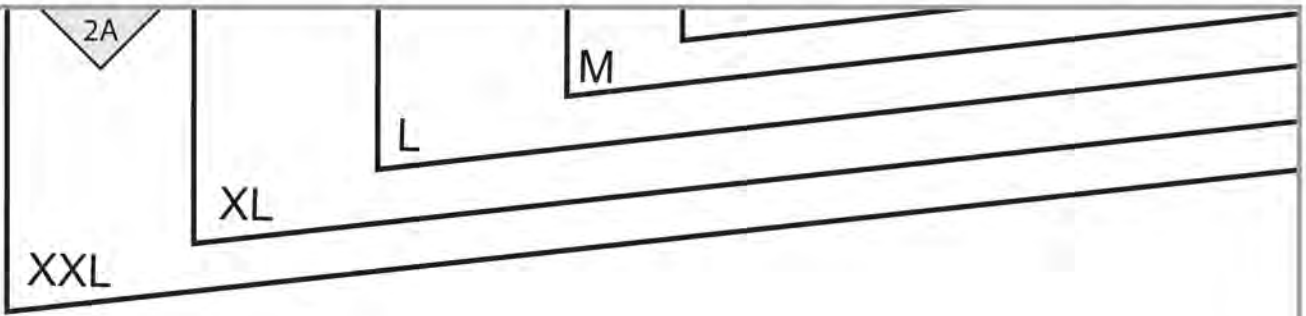
2B

S
M
L
XL
XXL

S
M
L
XL
XXL

2C





2B

1B

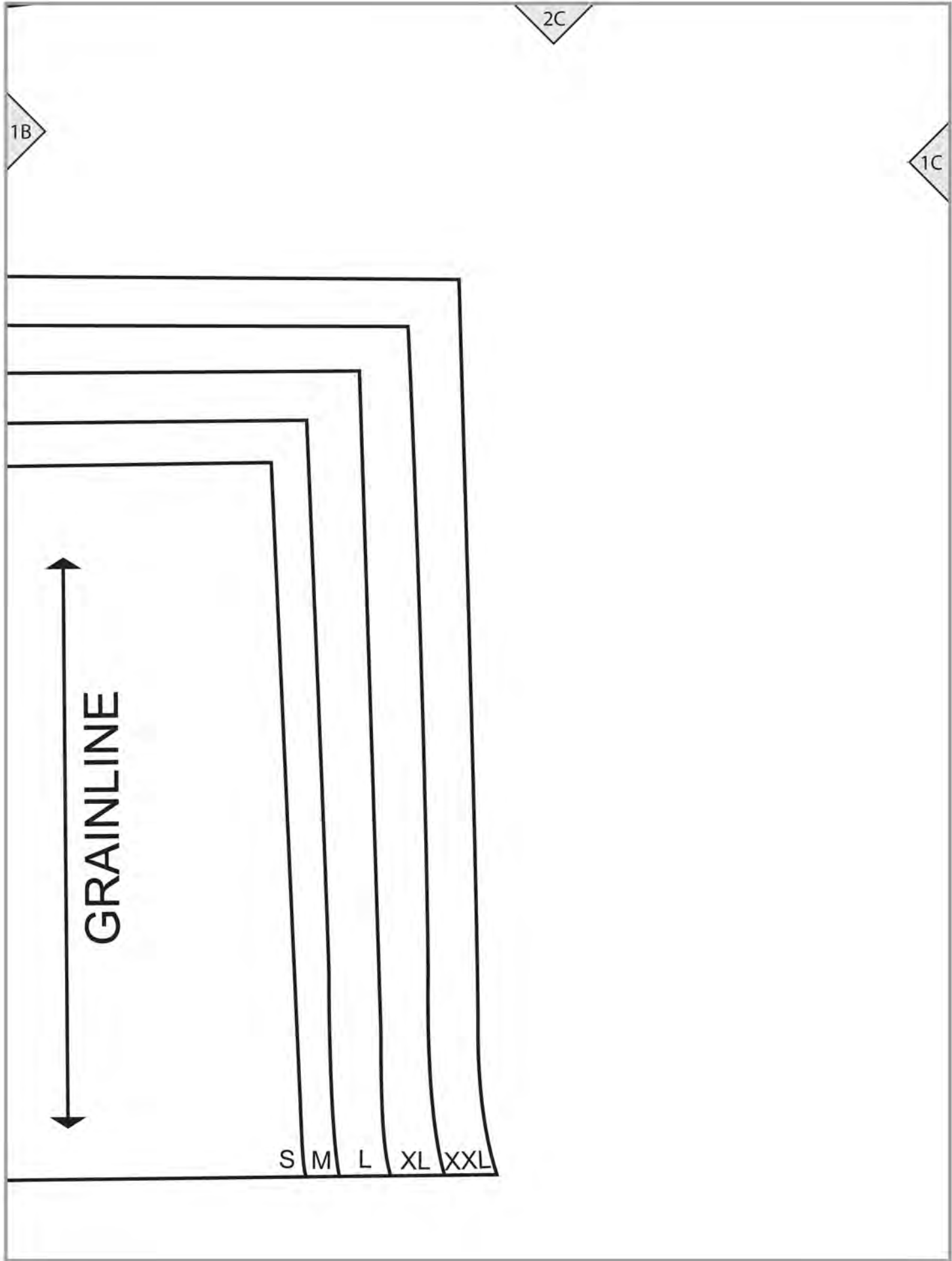


1A

DRESS (C) CAP SLEEVE

Cut 2

7



2D

1C

THE **MAGIC** 
PATTERN BOOK

BY AMY BARICKMAN

workman

workman.com

CATHERINE (C5)

TEST SQUARE
4" (10 cm)