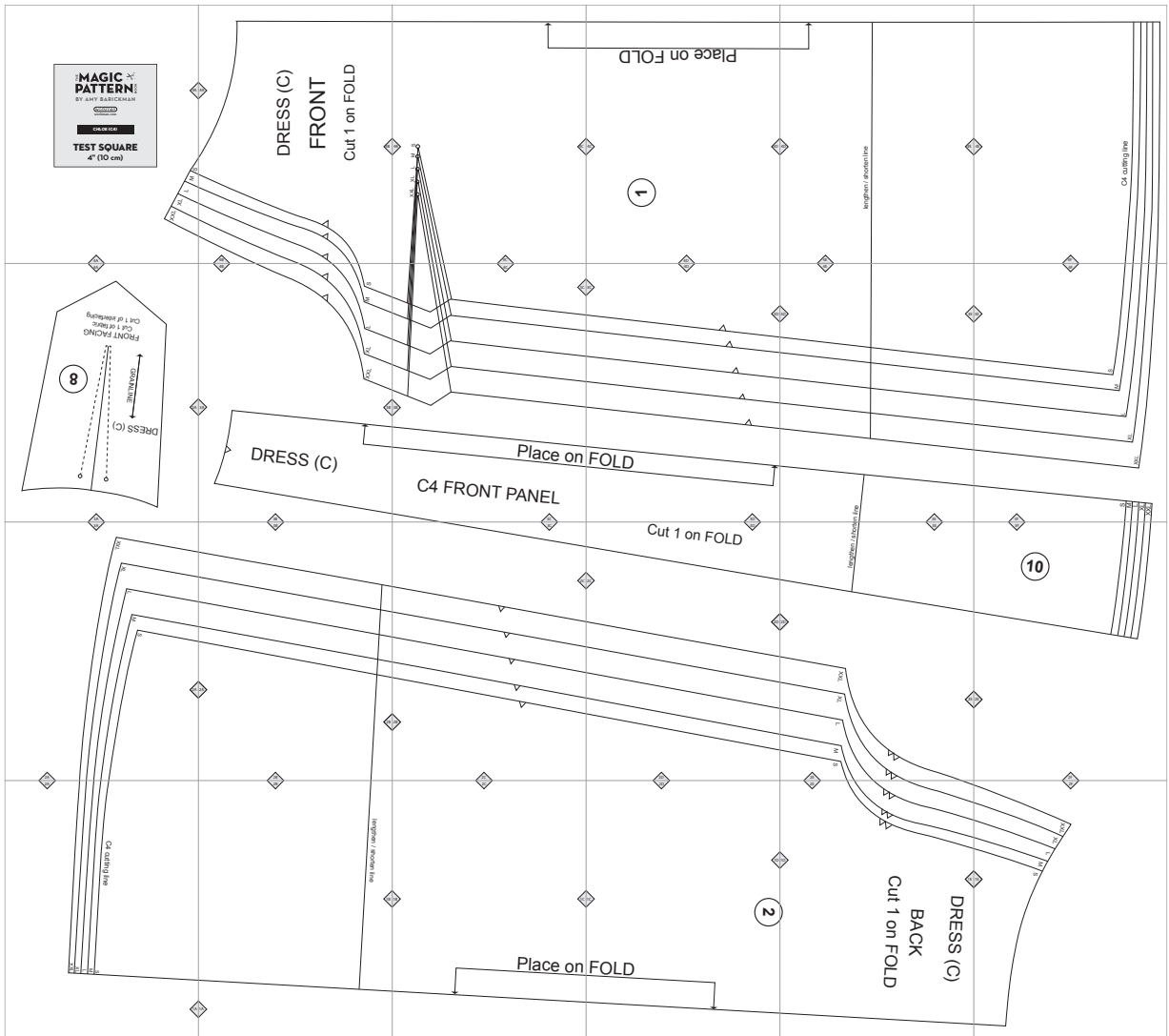


# C4. Chloe



Copyright ©2014 by Amy Barickman

All rights reserved. Amy Barickman's patterns may be printed for personal use, but may not be otherwise reproduced—mechanically, electronically, or by any other means, including photocopying—without written permission of the publisher.

Sewing pattern designs for *The Magic Pattern Book* by Amy Barickman are intended for personal use only, and not as the basis for commercial manufacturing.

Workman Publishing, New York • [workman.com](http://workman.com)

THE **MAGIC**  **PATTERN** BOOK

BY AMY BARICKMAN

workman

workman.com

**CHLOE (C4)**

**TEST SQUARE**  
4" (10 cm)

4A

XXL

XL

L

M

S

4A

4A

**DRESS (C)**

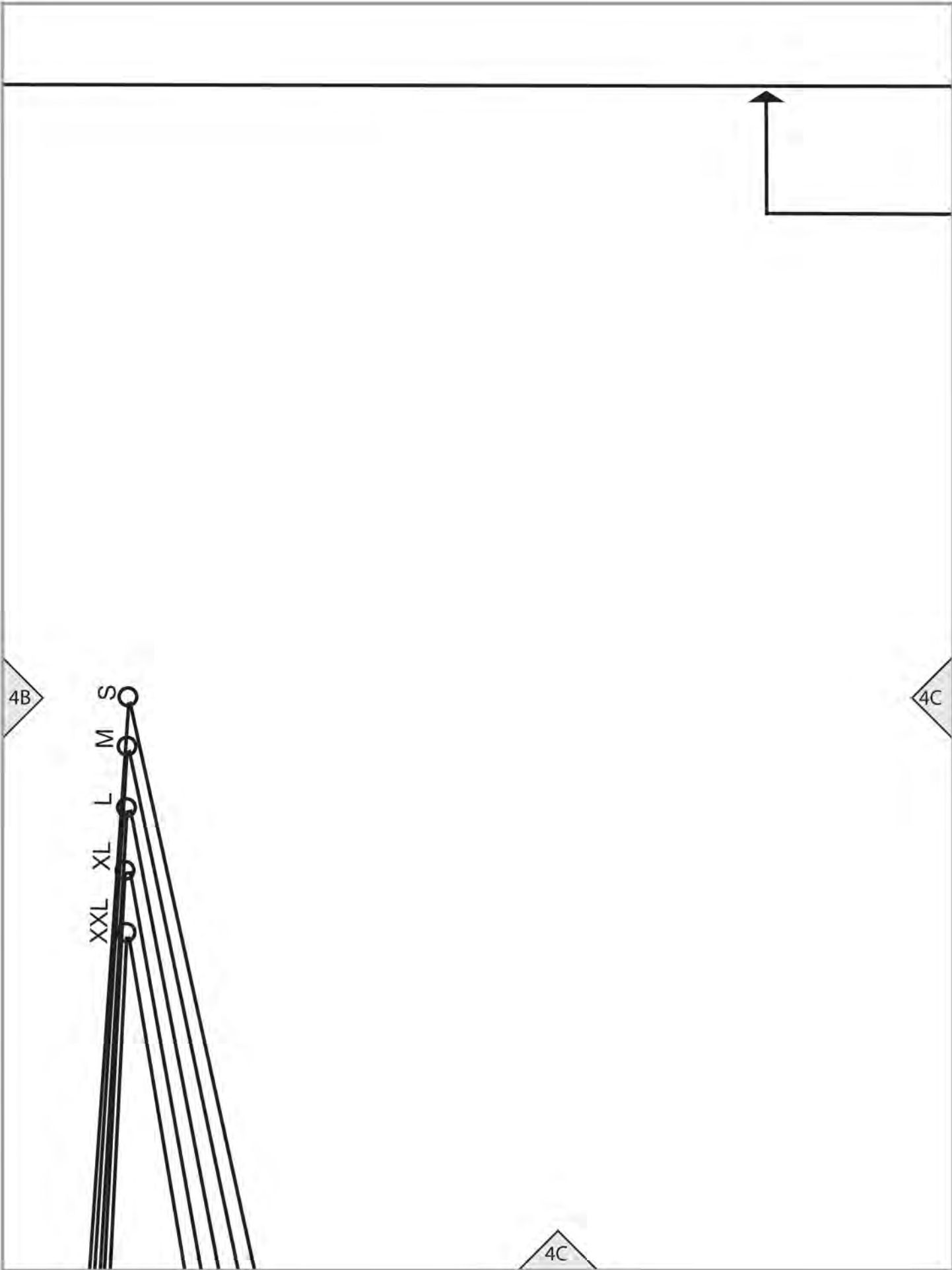
**FRONT**

**Cut 1 on FOLD**

4B

4B





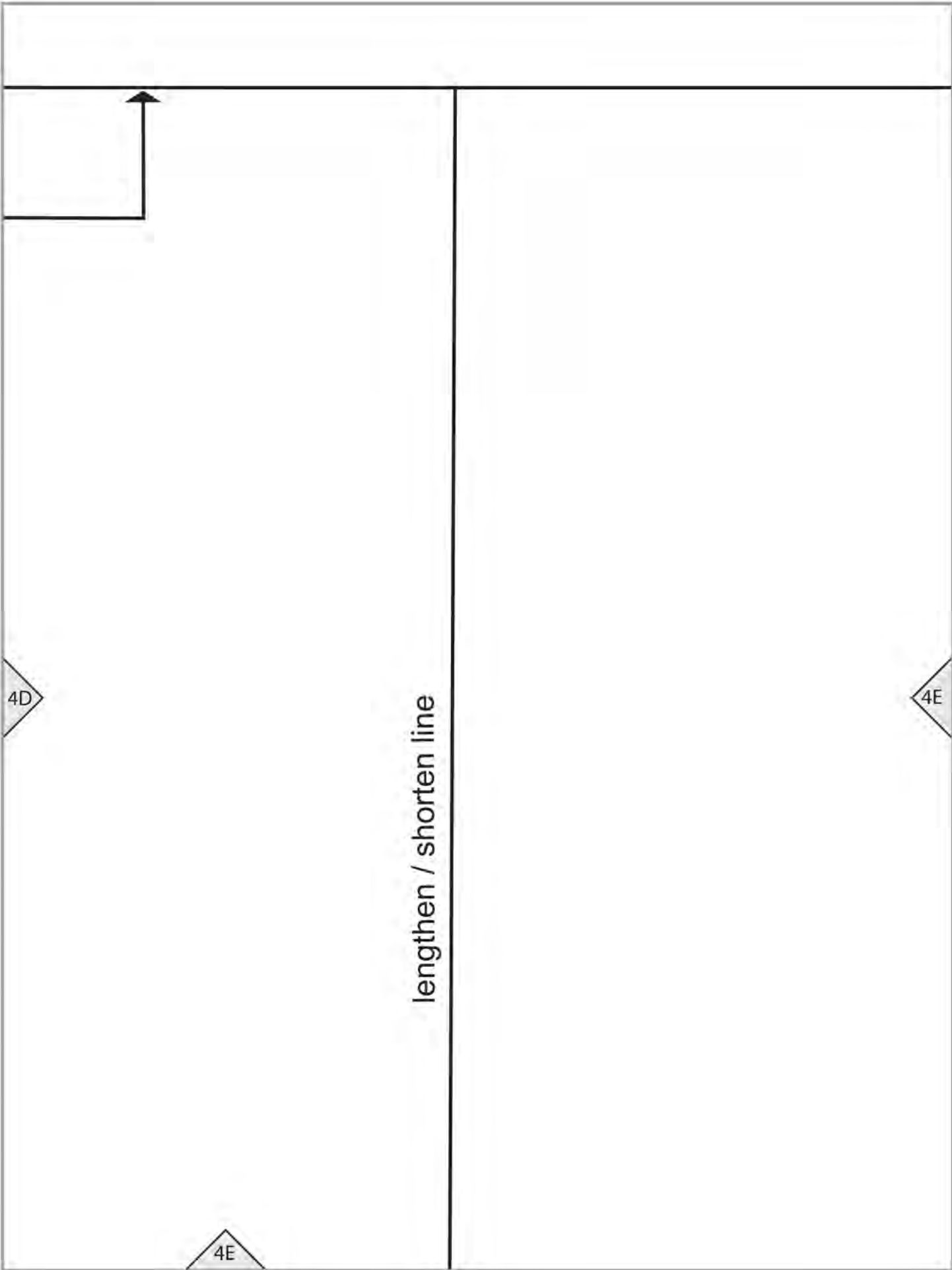
Place on FOLD

4C

4D



4D



4D

lengthen / shorten line

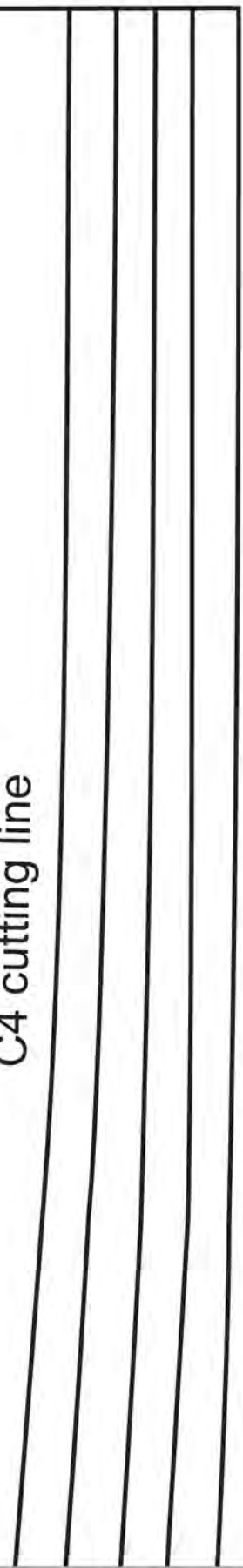
4E

4E

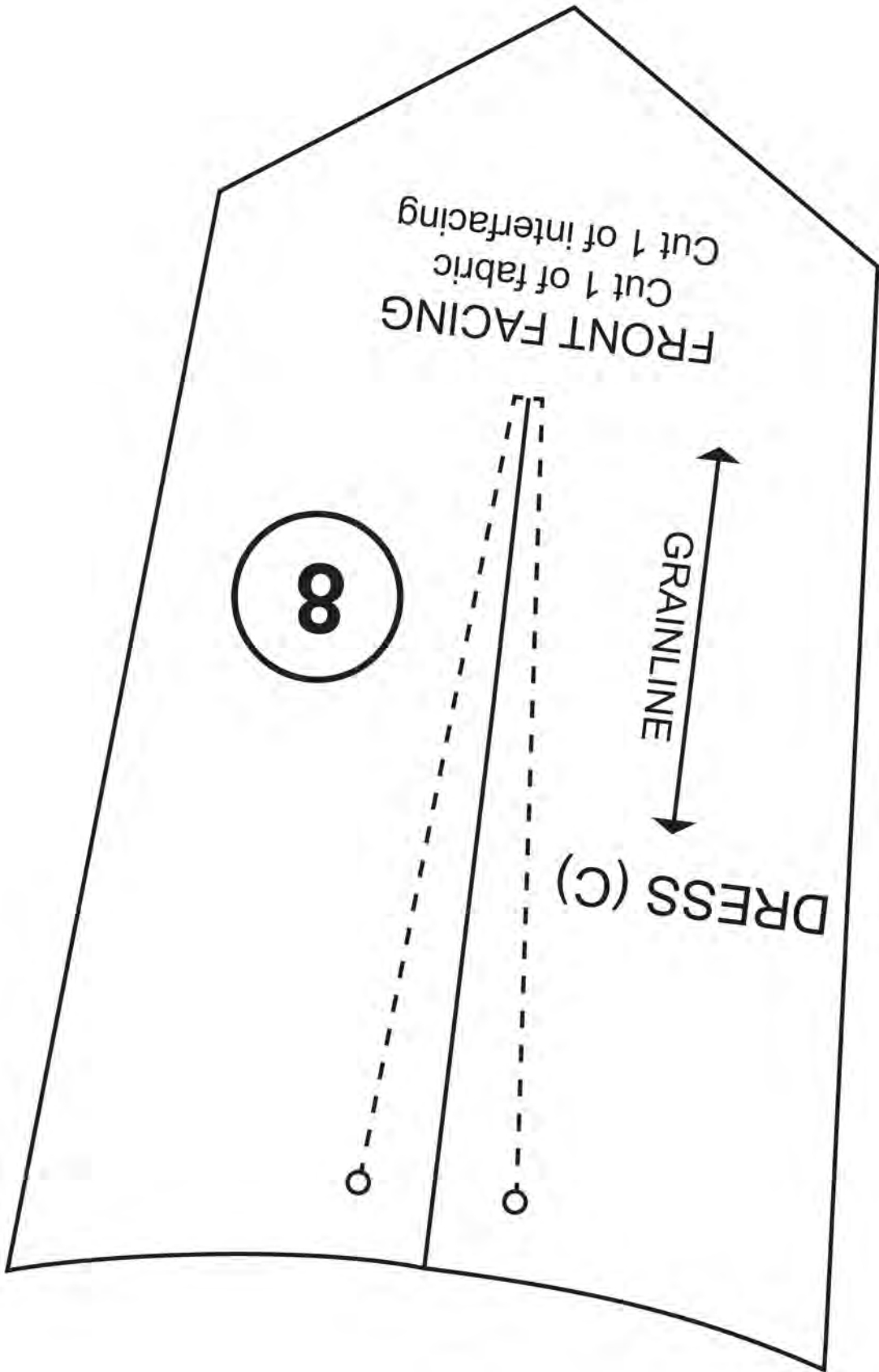
4E

4F

C4 cutting line



4A



3A

3A



4B

S

M

L

XL

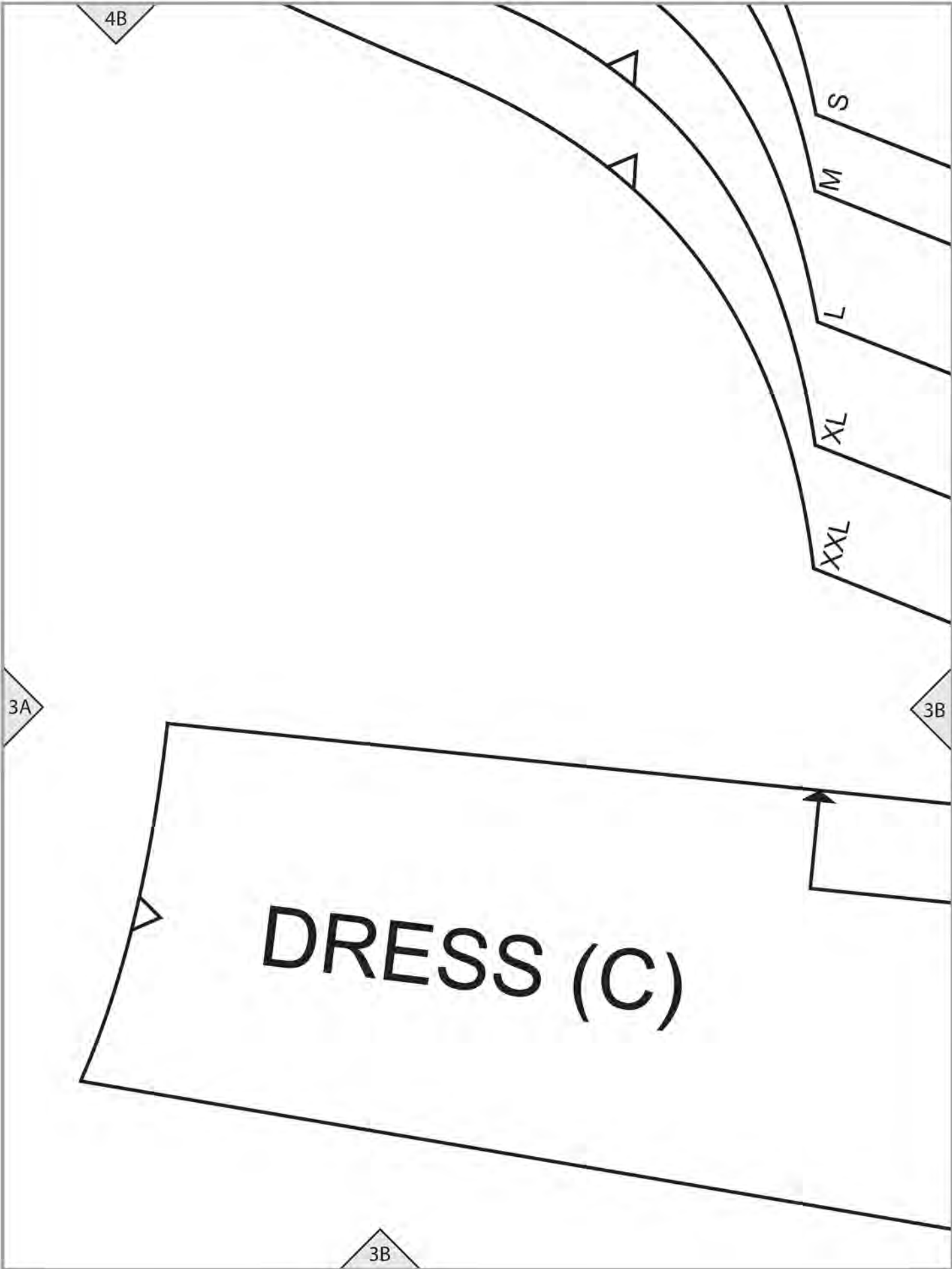
XXL

3A

3B

**DRESS (C)**

3B



4C

3C

3B

Place on

**C4 FRONT PANEL**

3C

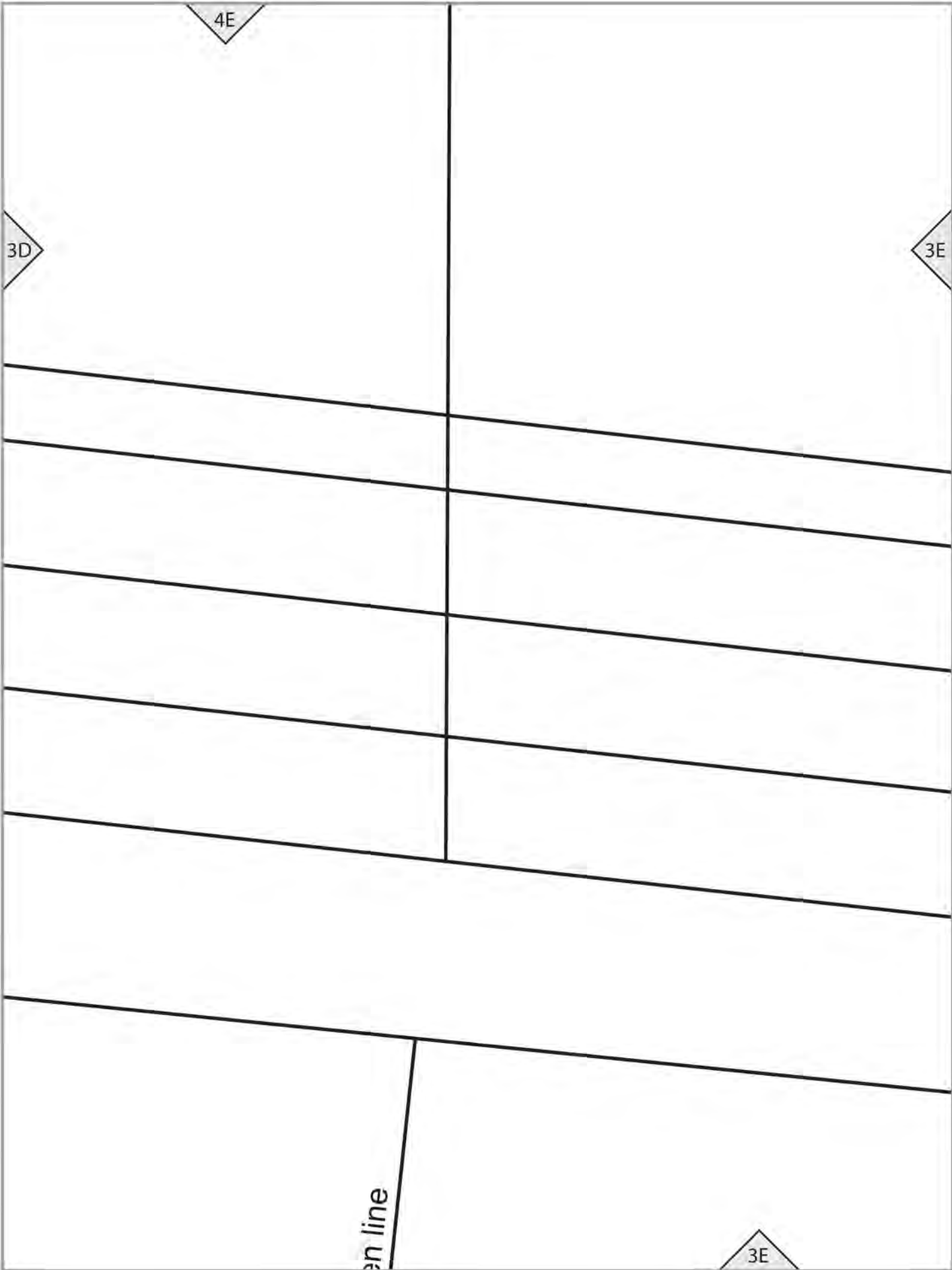
4D

3C

3D



3D



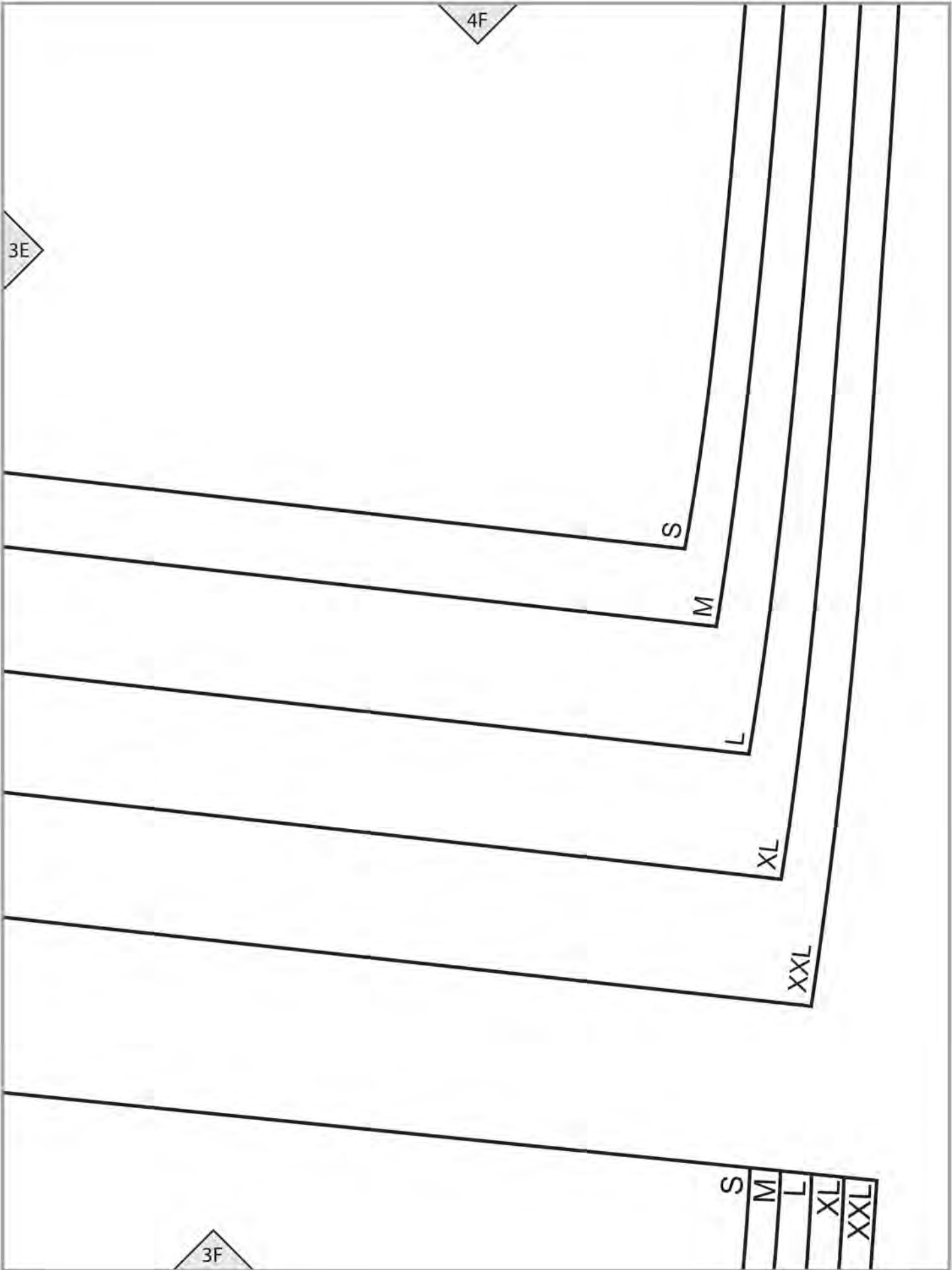
4E

3D

3E

en line

3E



4F

3E

S

M

L

XL

XXL

S

M

L

XL

XXL

3F

3A

XXX

XX

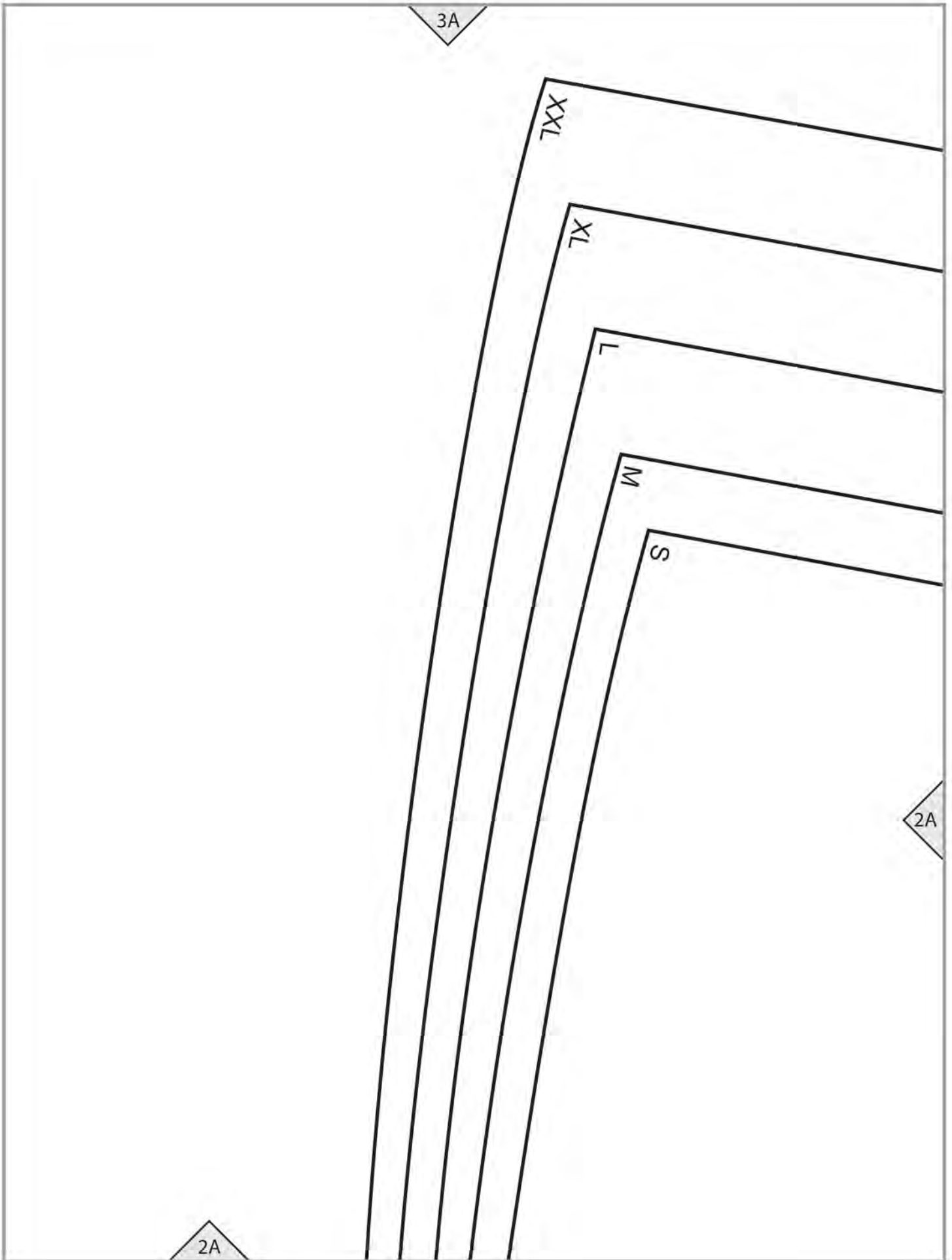
L

M

S

2A

2A

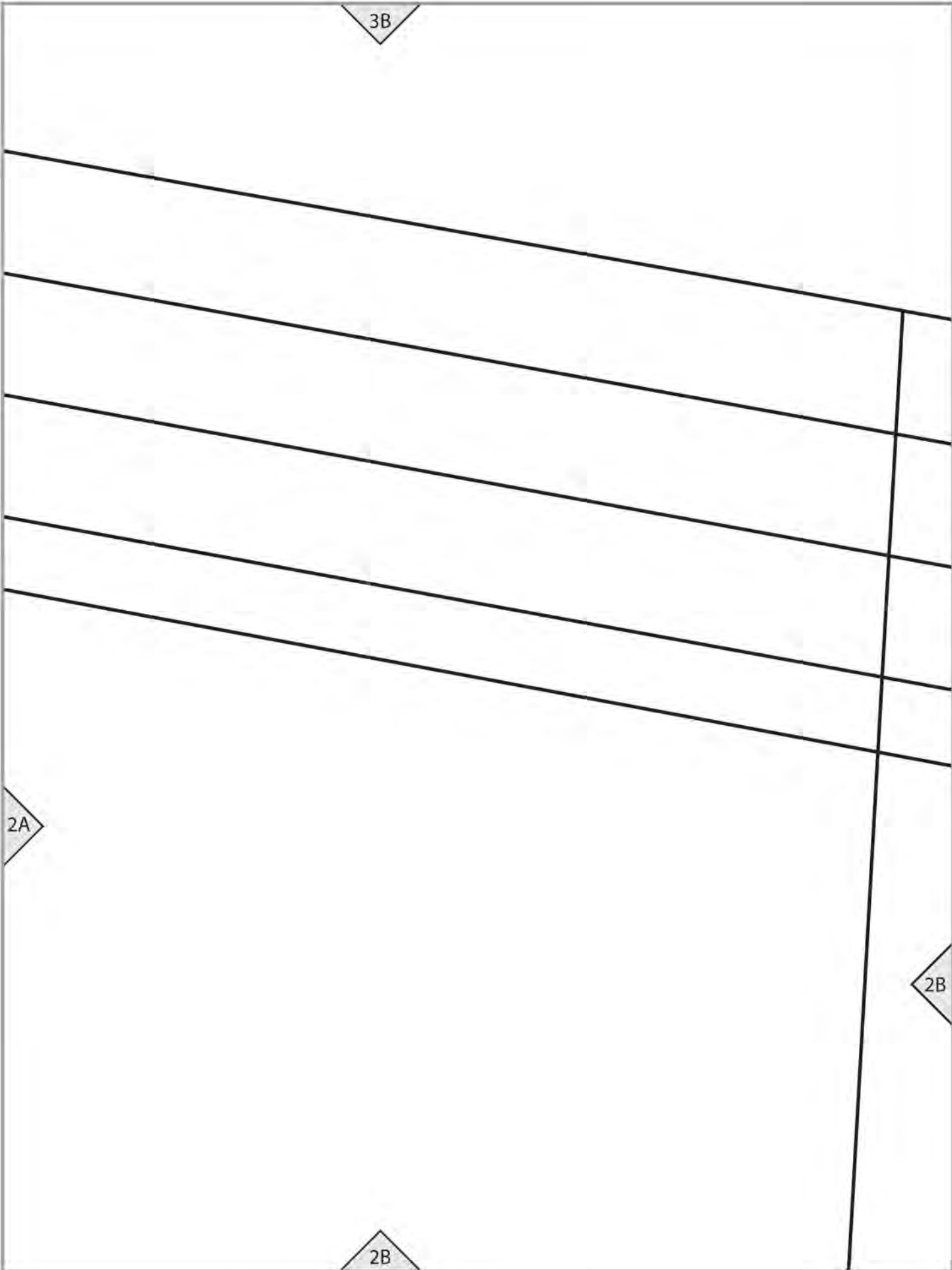


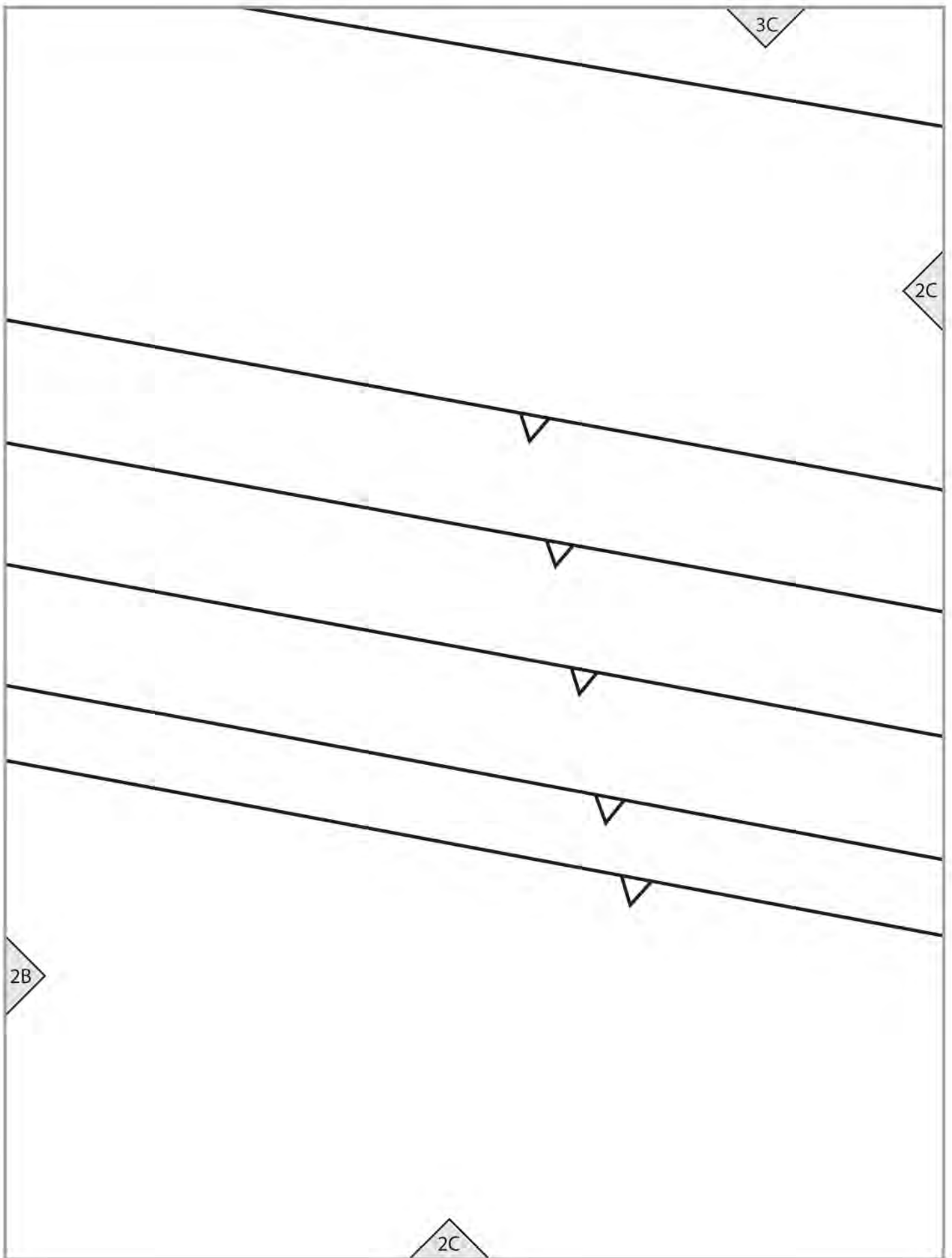
3B

2A

2B

2B







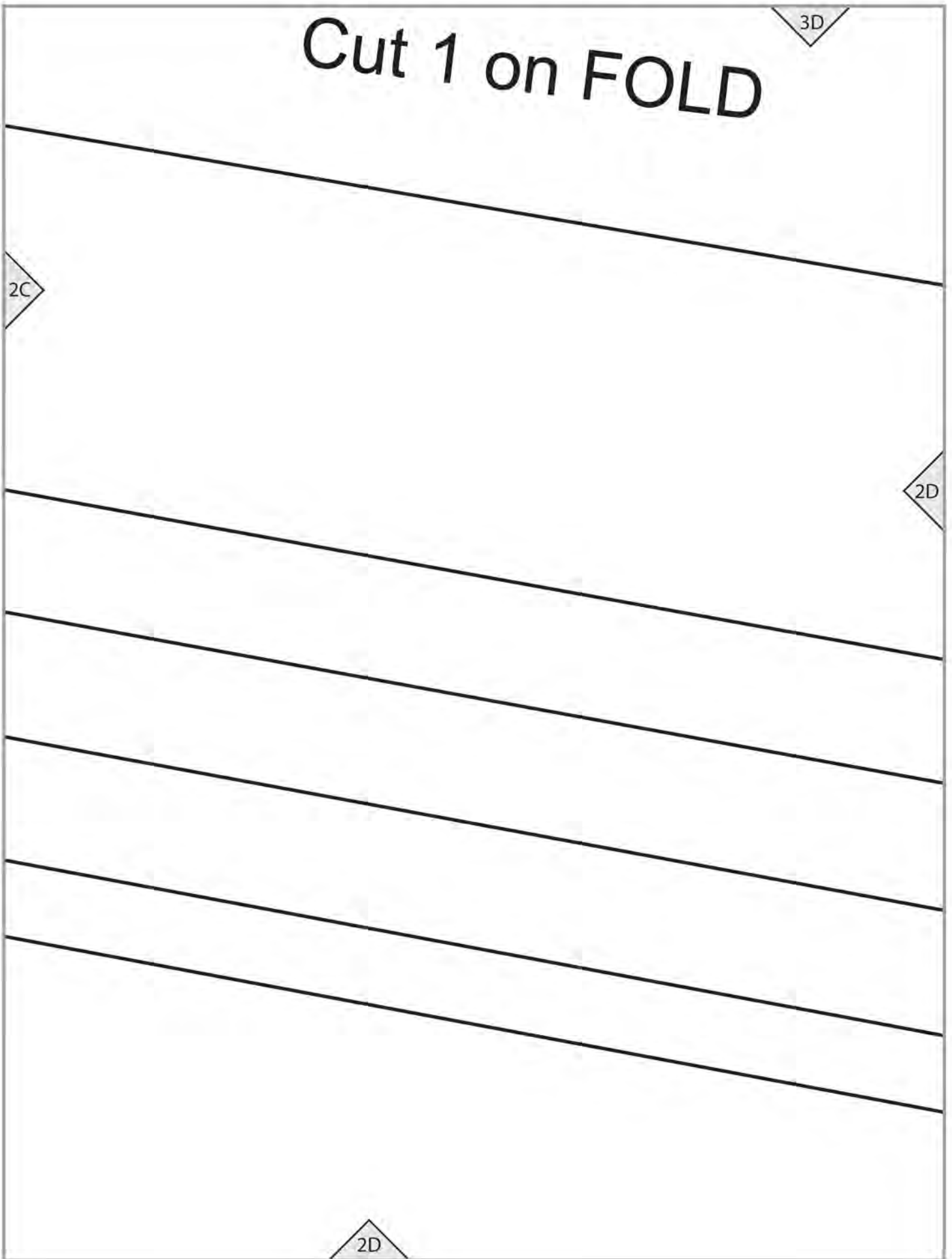
# Cut 1 on FOLD

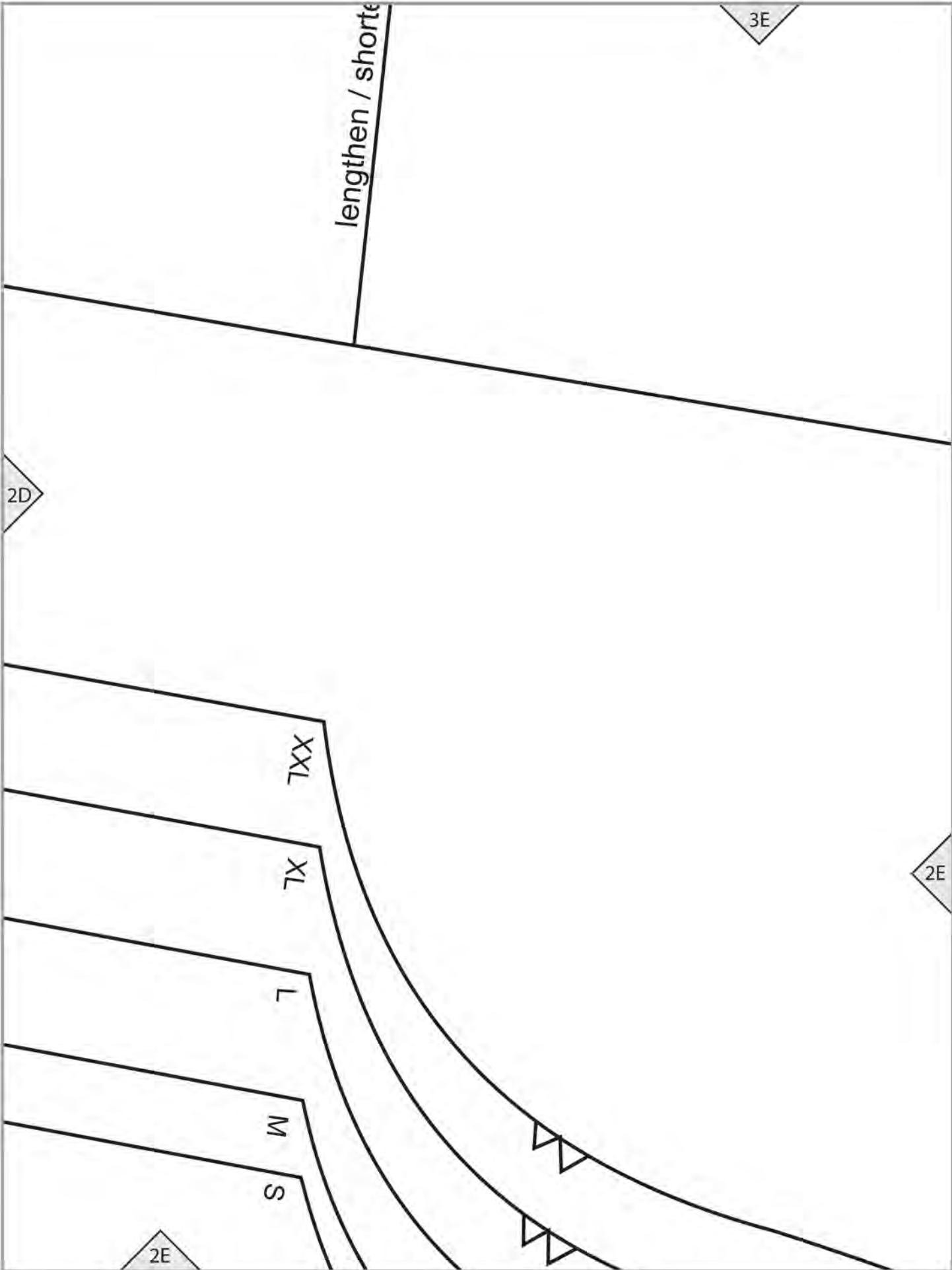
3D

2C

2D

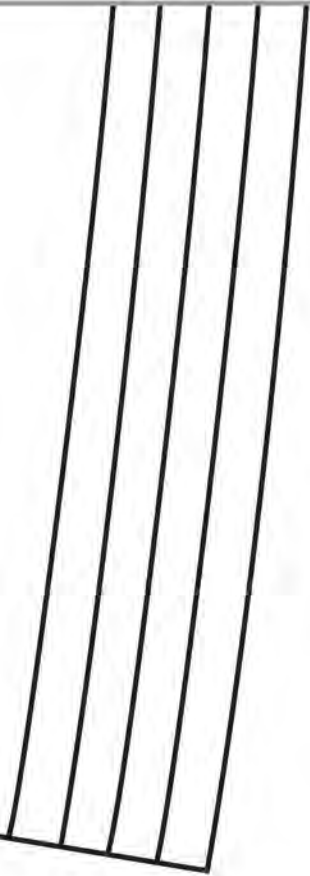
2D





3F

10



2E

2F

2A

C4 cutting line

S  
M  
L  
XL  
XXL

1A

2B

lengthen / shorten line

1B

1A

2C

1B

1C

Place on



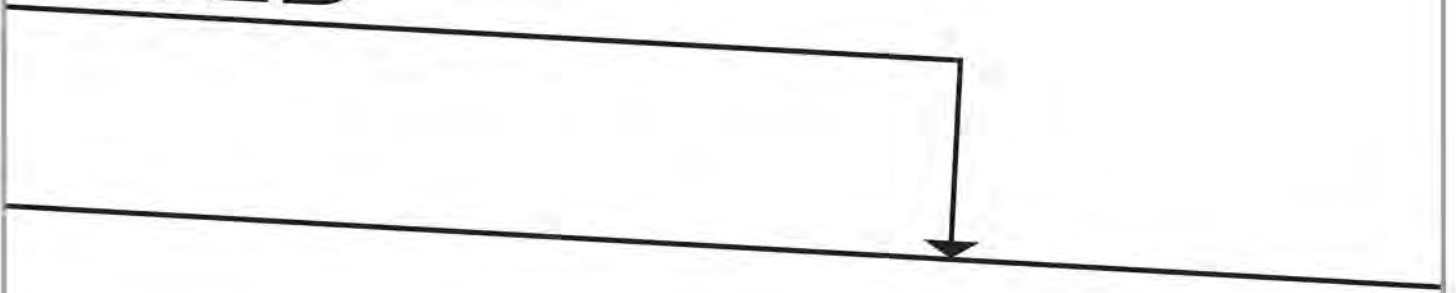
2D

1D

1C

2

**FOLD**



**DRESS (C)**

**BACK**

**Cut 1 on FOLD**

1E

2E

1D

