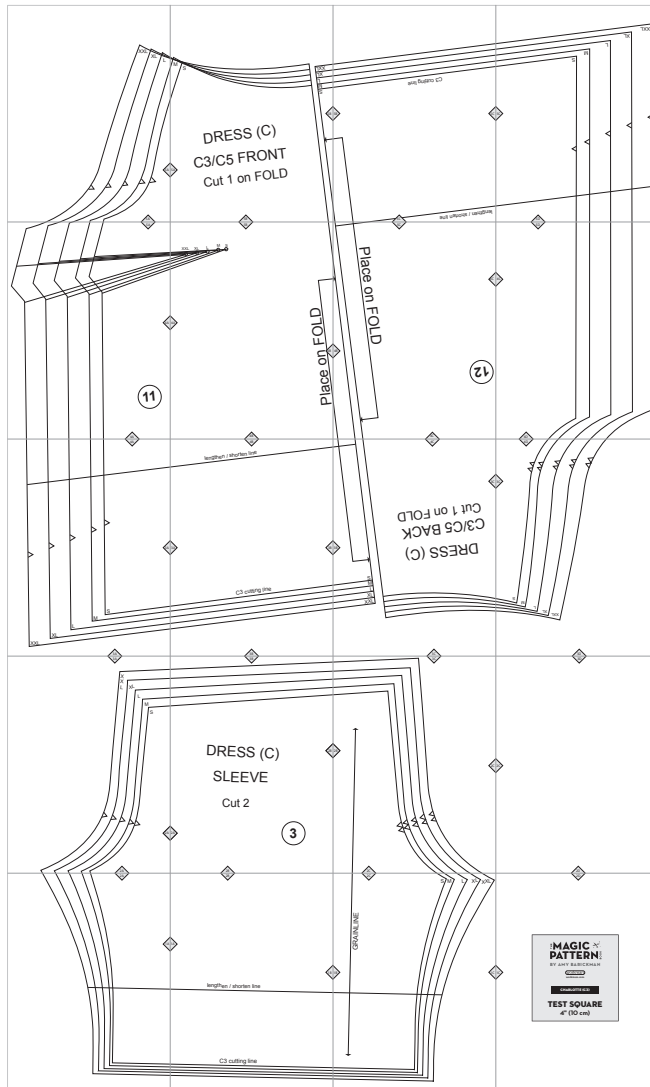


C3. Charlotte

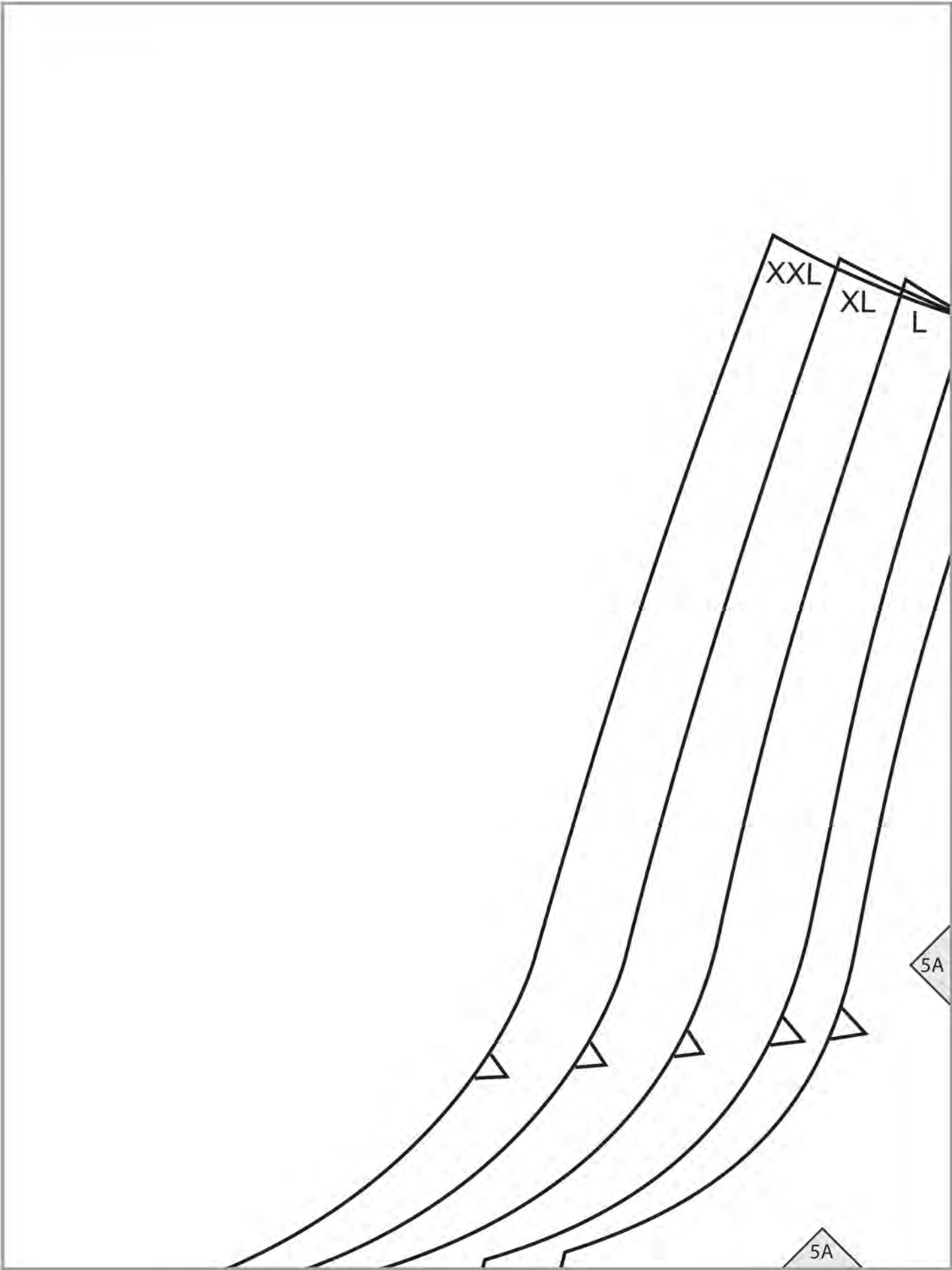


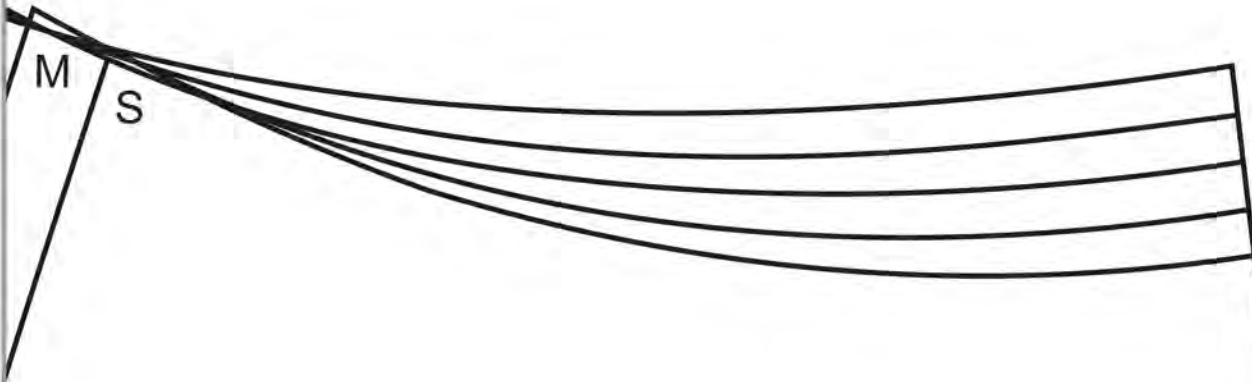
Copyright ©2014 by Amy Barickman

All rights reserved. Amy Barickman's patterns may be printed for personal use, but may not be otherwise reproduced—mechanically, electronically, or by any other means, including photocopying—without written permission of the publisher.

Sewing pattern designs for *The Magic Pattern Book* by Amy Barickman are intended for personal use only, and not as the basis for commercial manufacturing.

Workman Publishing, New York • workman.com





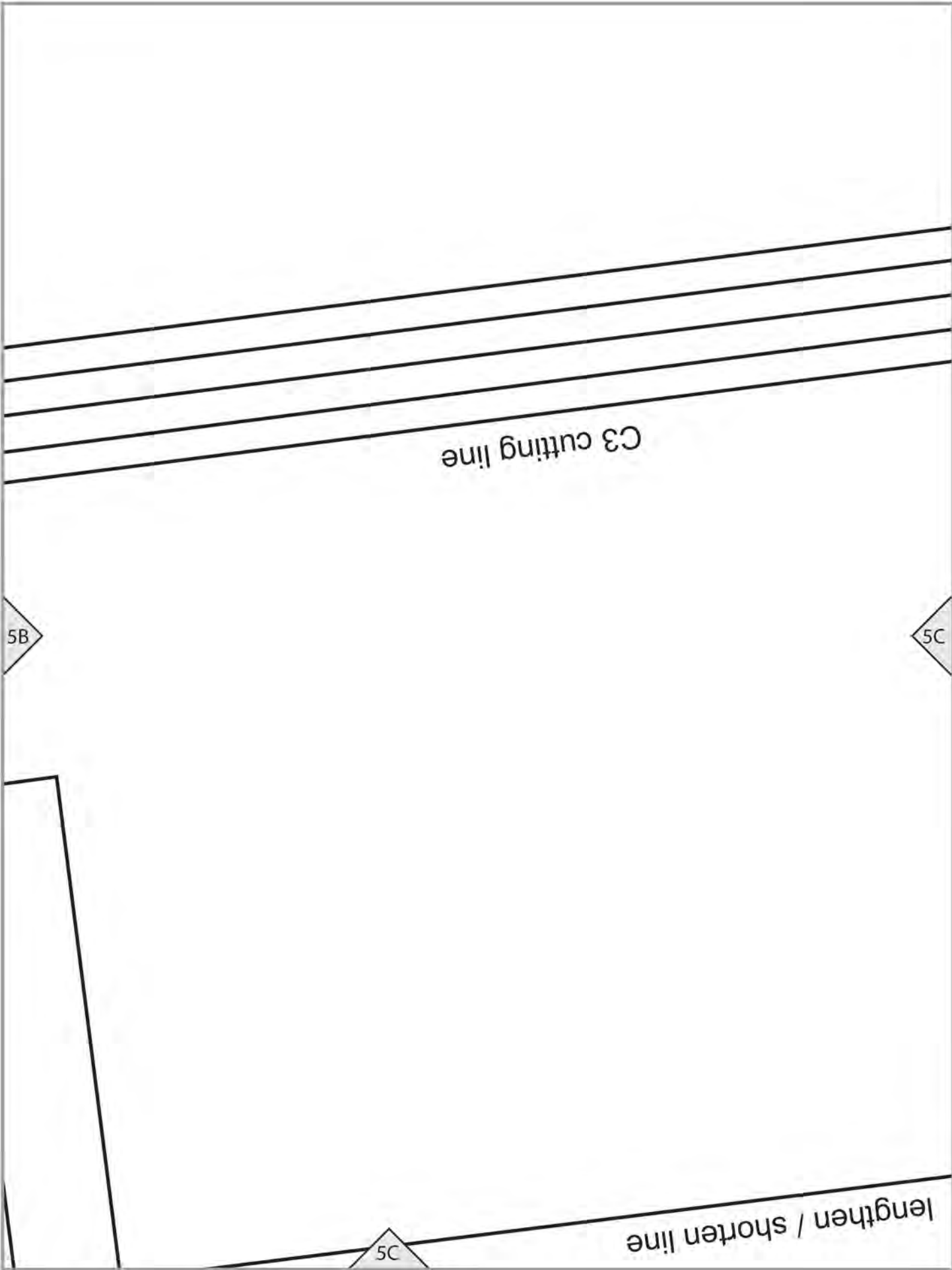
1XX
1X
1
W
S

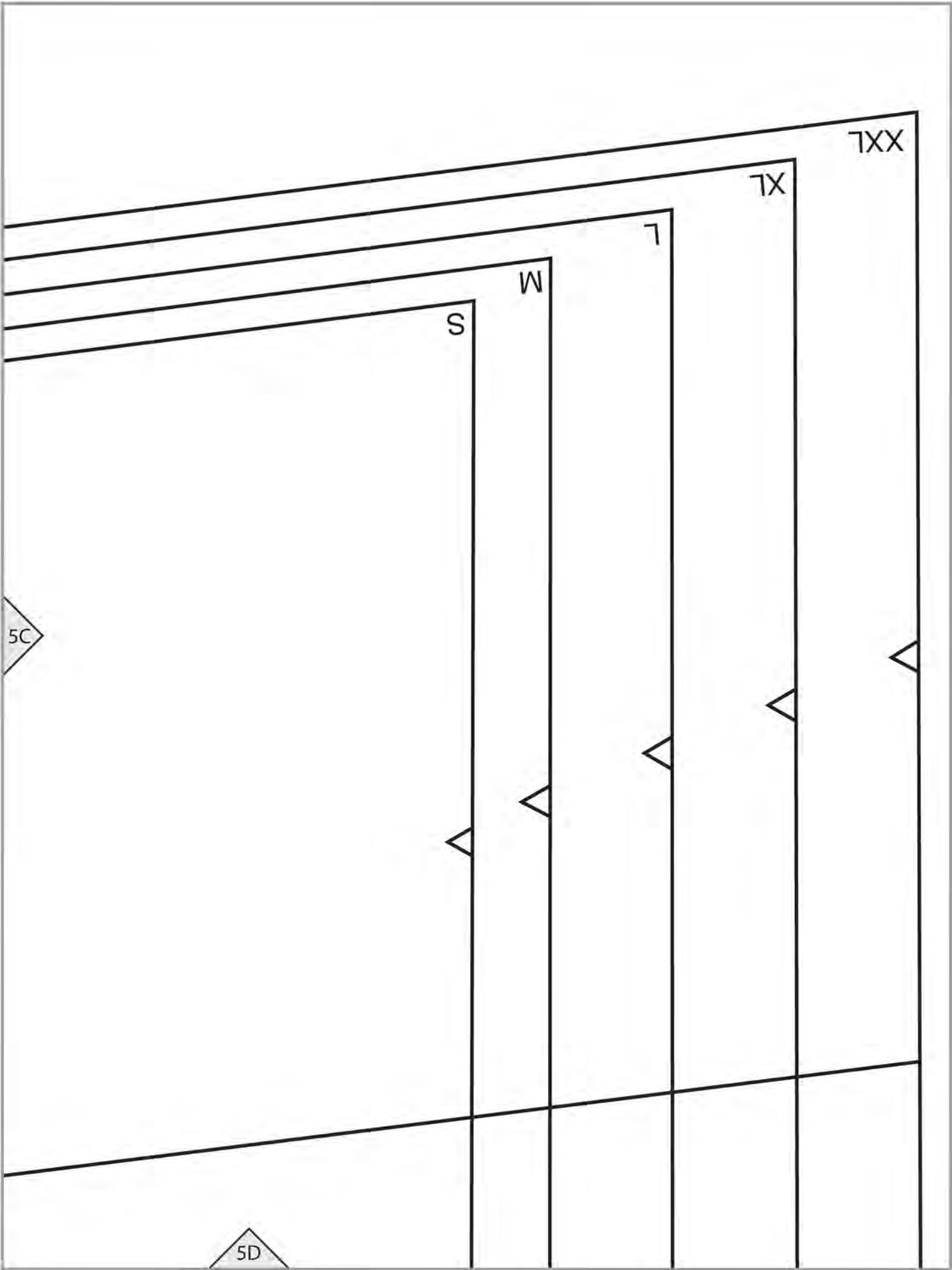
DRESS (C)
C3/C5 FRONT
Cut 1 on FOLD

5A

5B

5B





5A

4A

11

4A

5B

XXL

XL

L

M

S

4A

4B

4B

Place on FOLD

5C

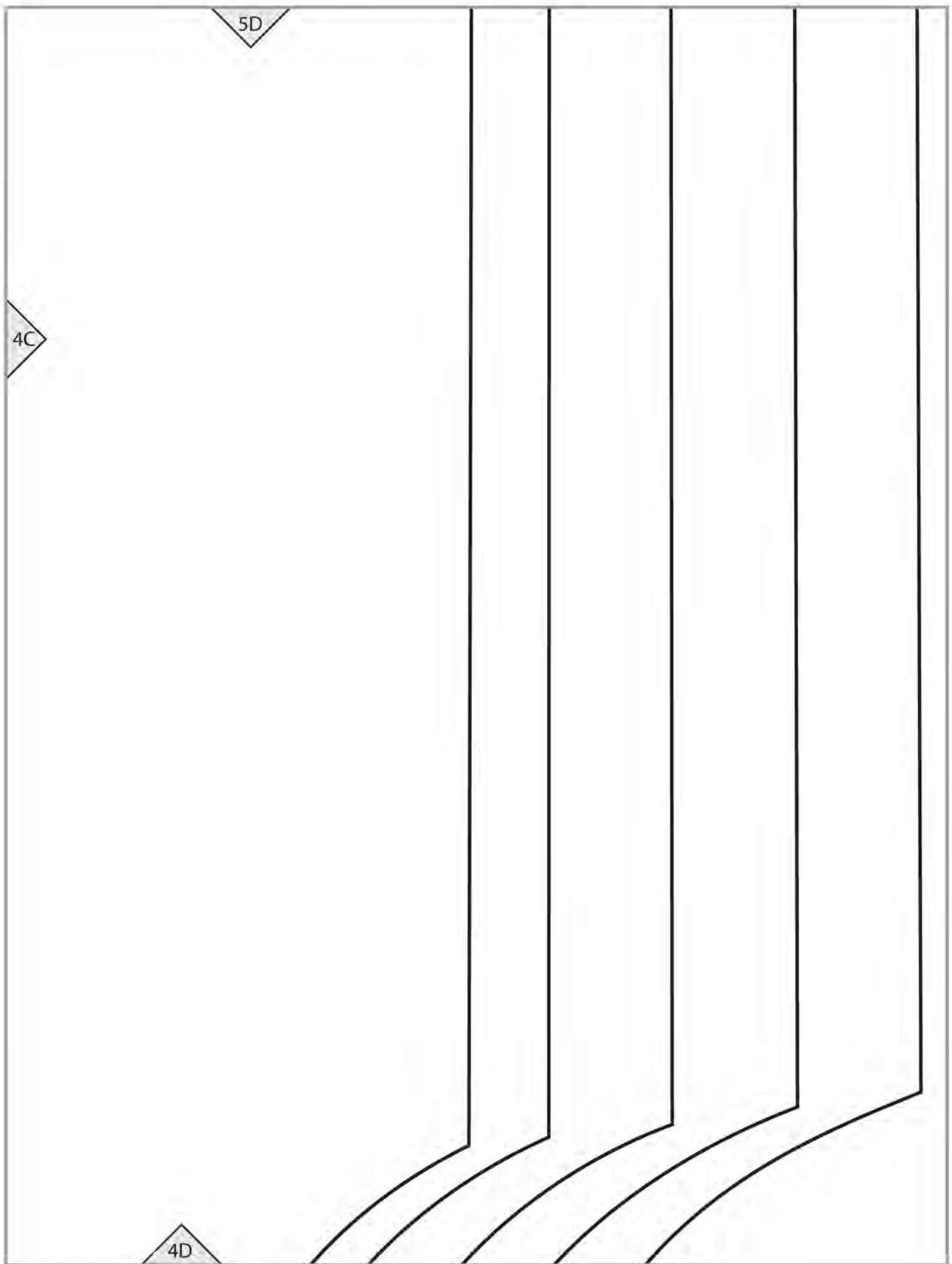
4C

Place on FOLD

4B

12

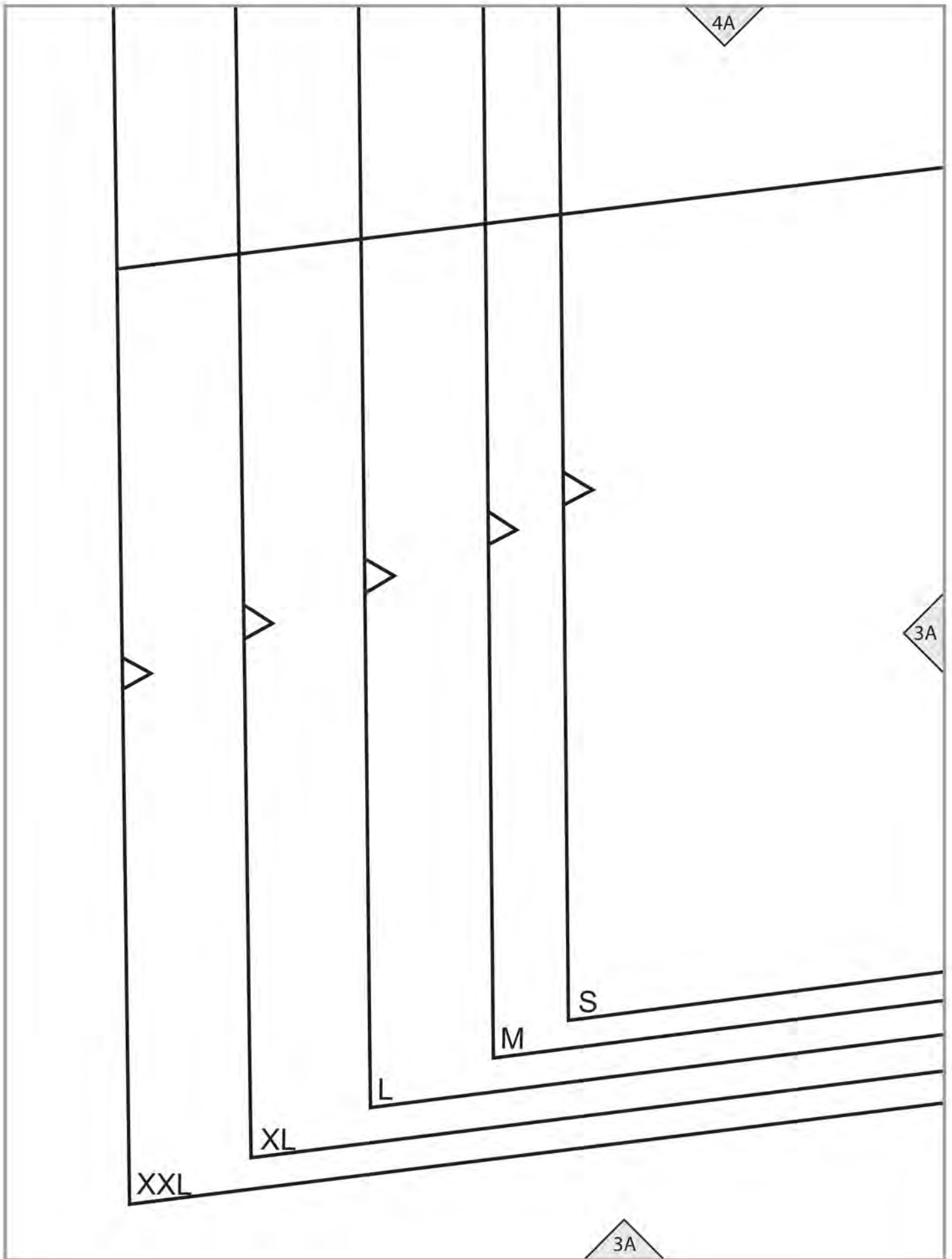
4C



4C

5D

4D



4B

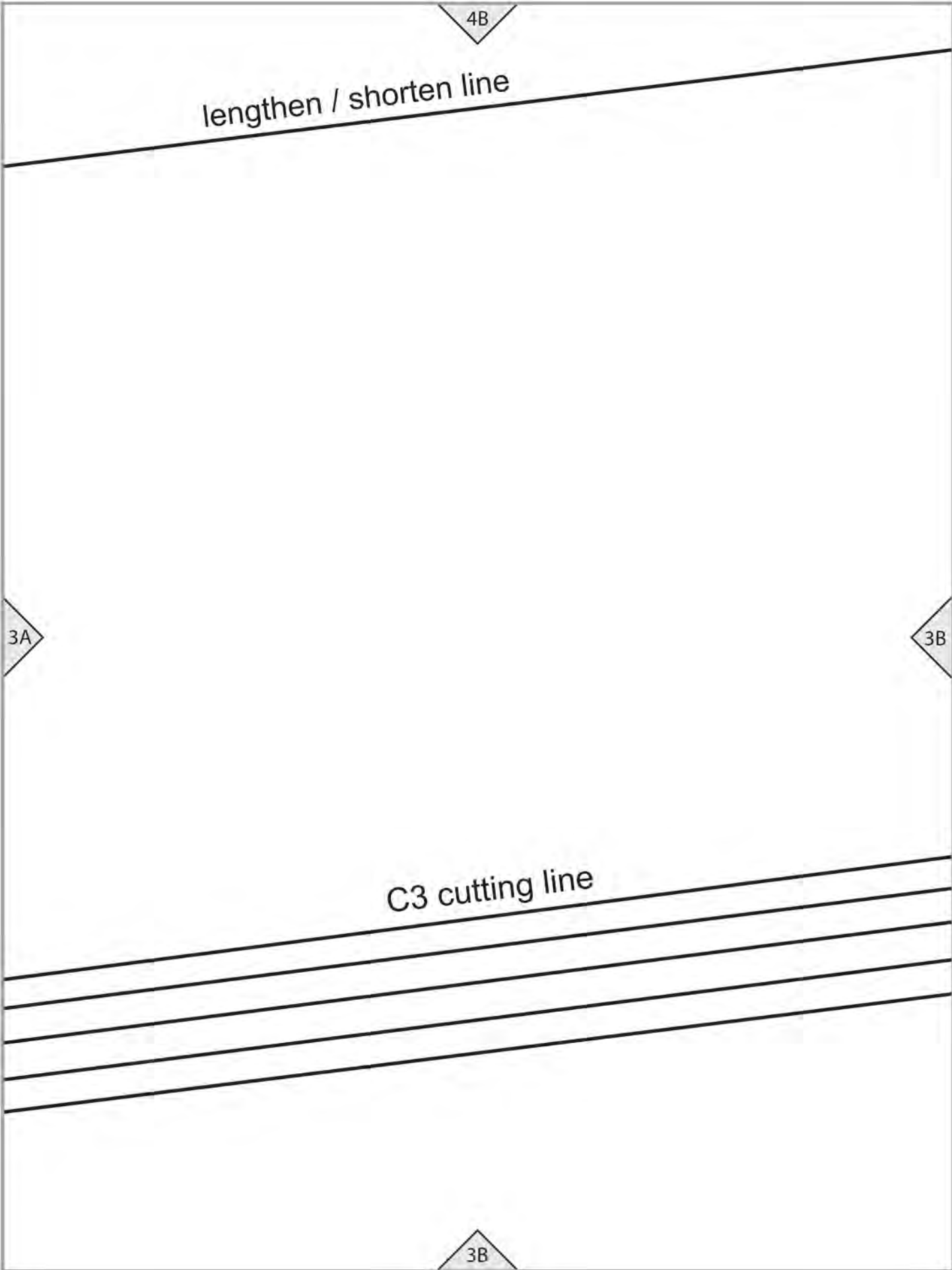
lengthen / shorten line

3A

3B

C3 cutting line

3B



4C

3C

DRESS (C)
C3/C5 BACK
Cut 1 on FOLD

3B

S

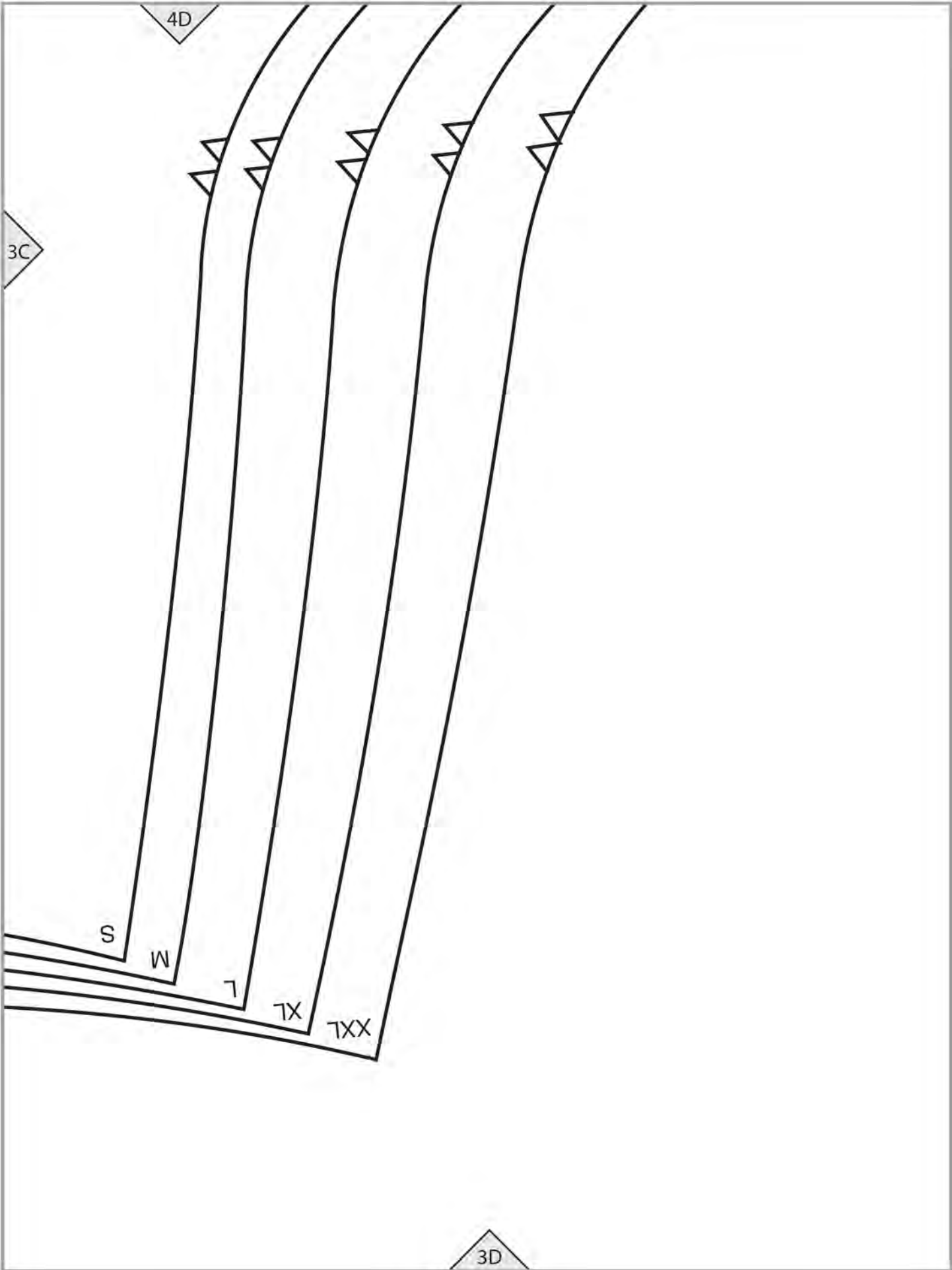
M

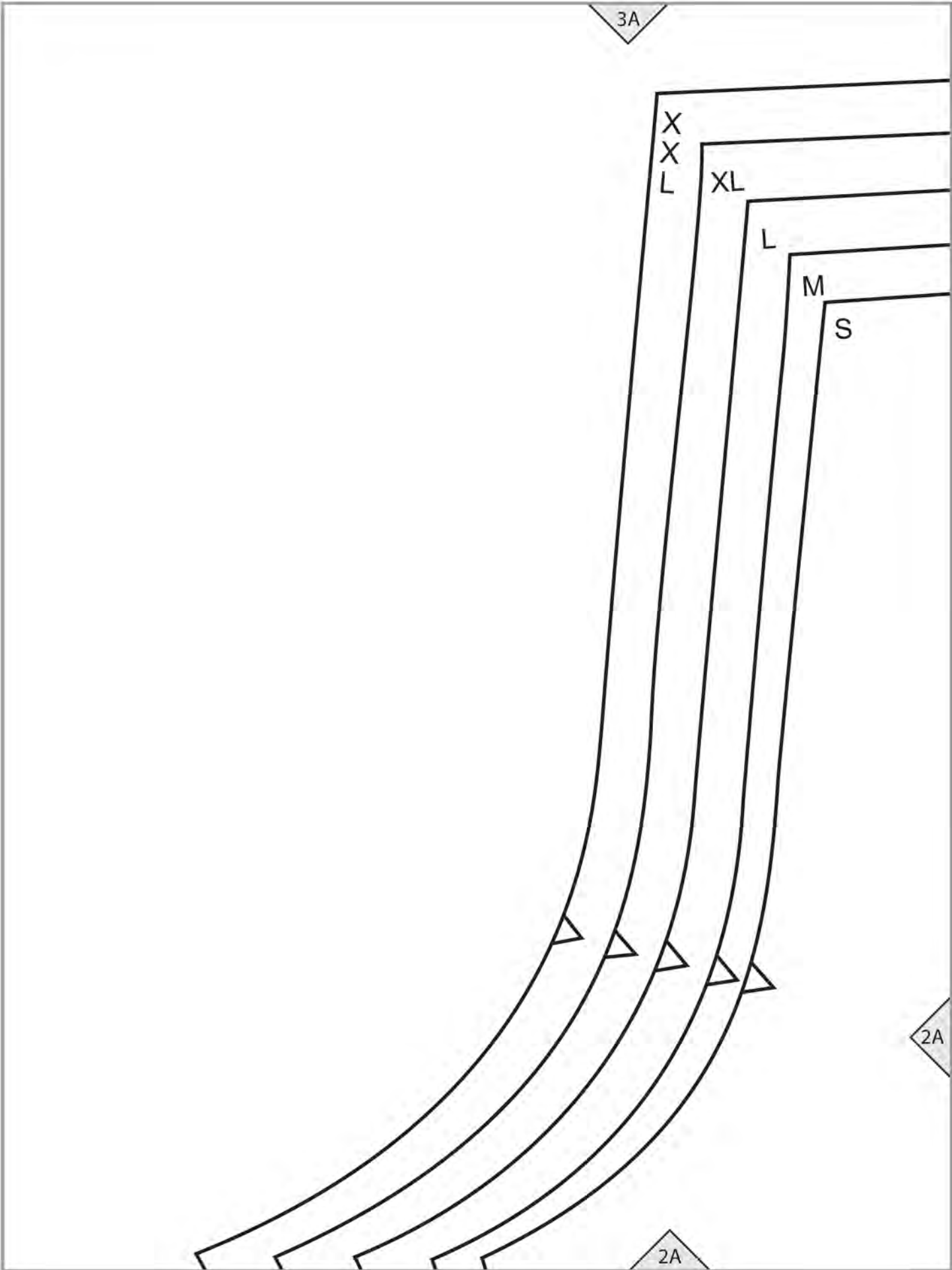
L

XL

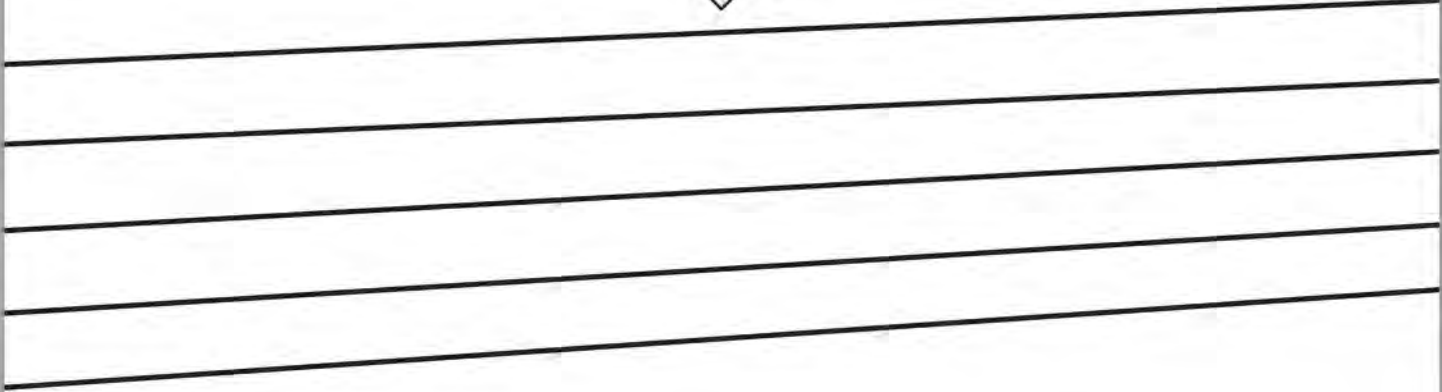
XXL

3C





3B



DRESS (C)

SLEEVE

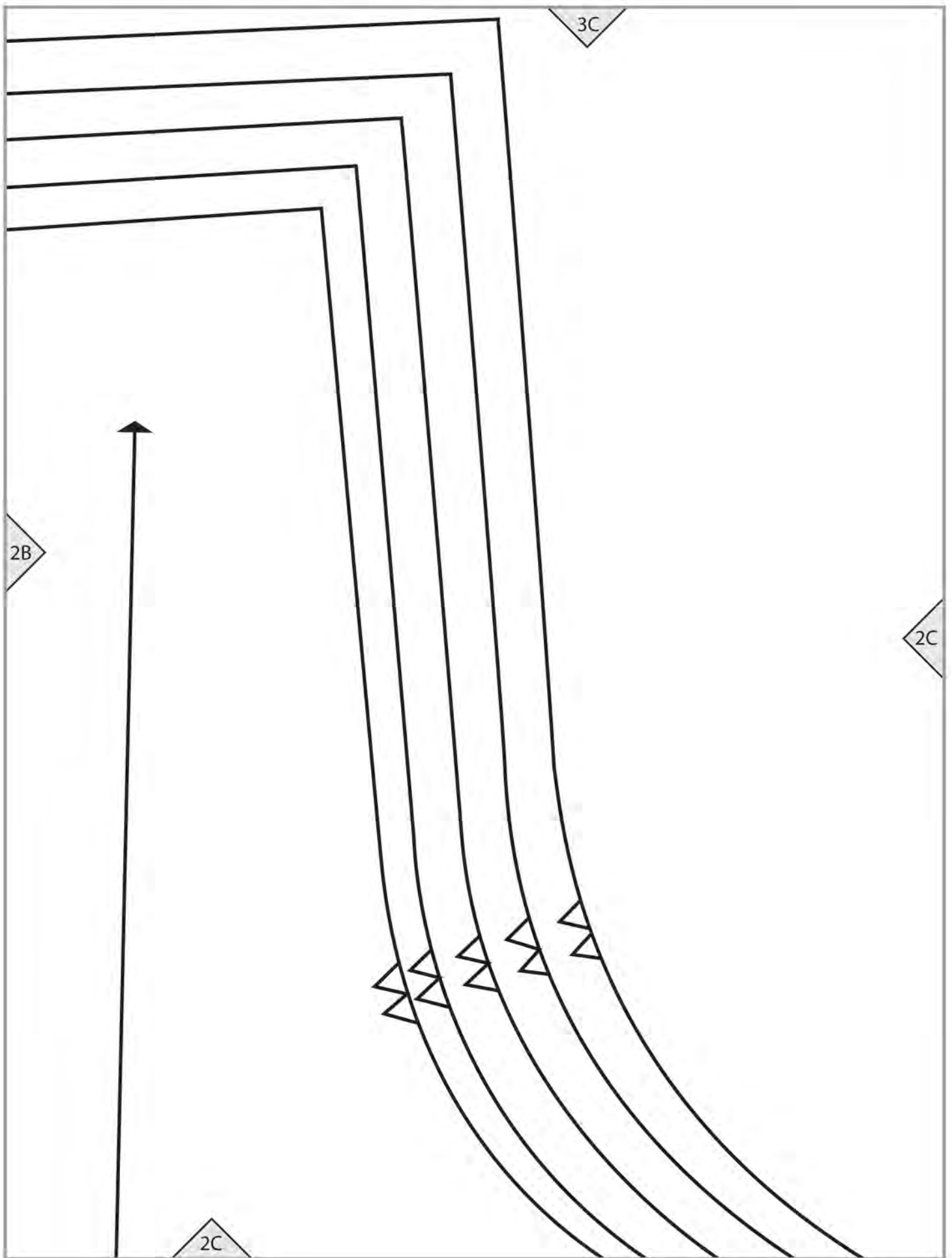
Cut 2

2B

2A

3

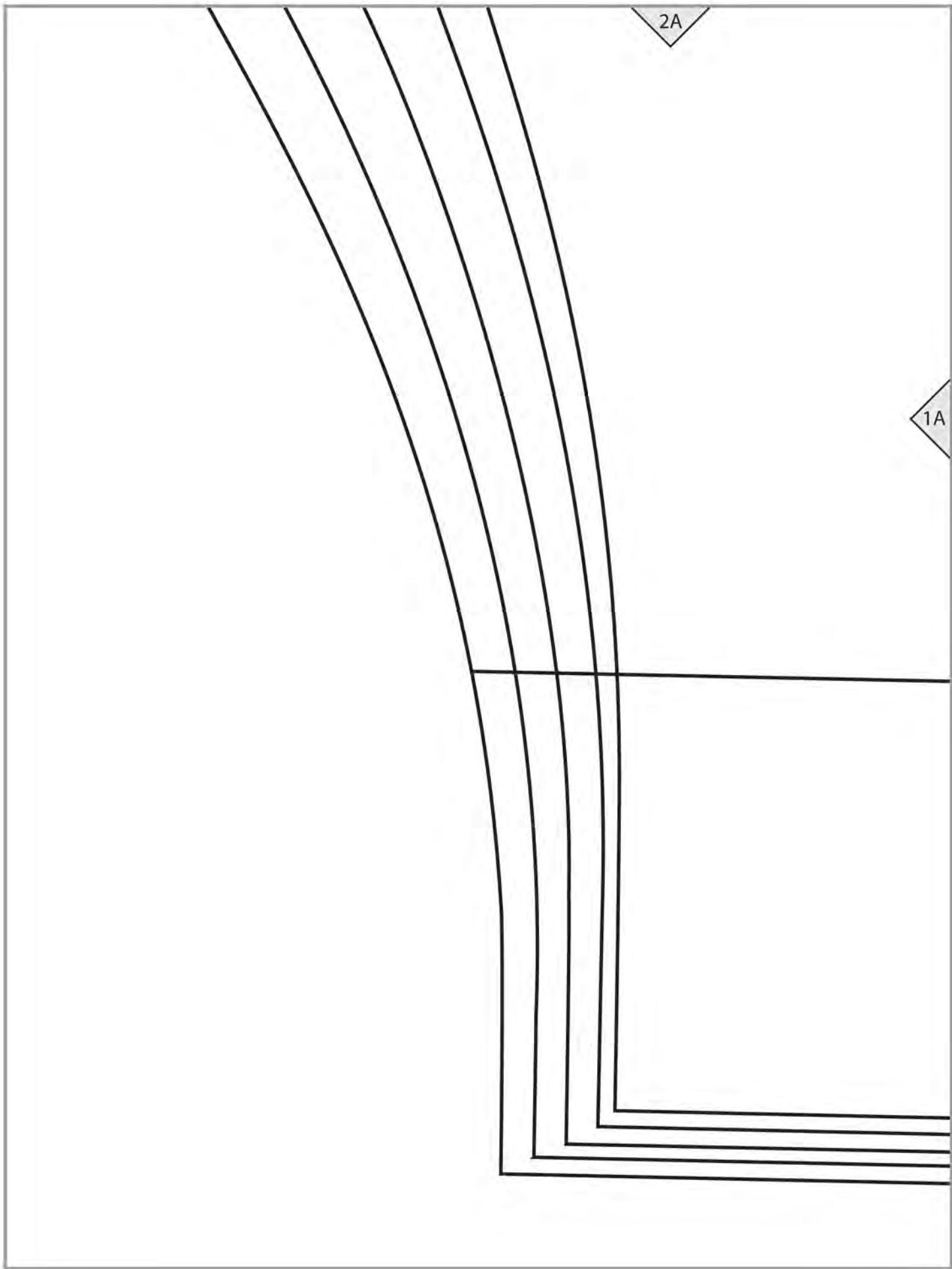
2B



3D

2C

2D



2A

1A

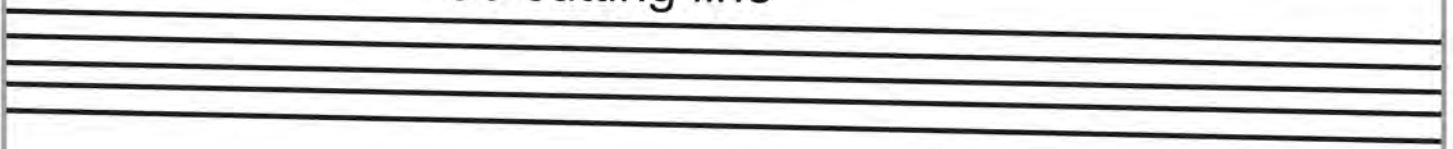
2B

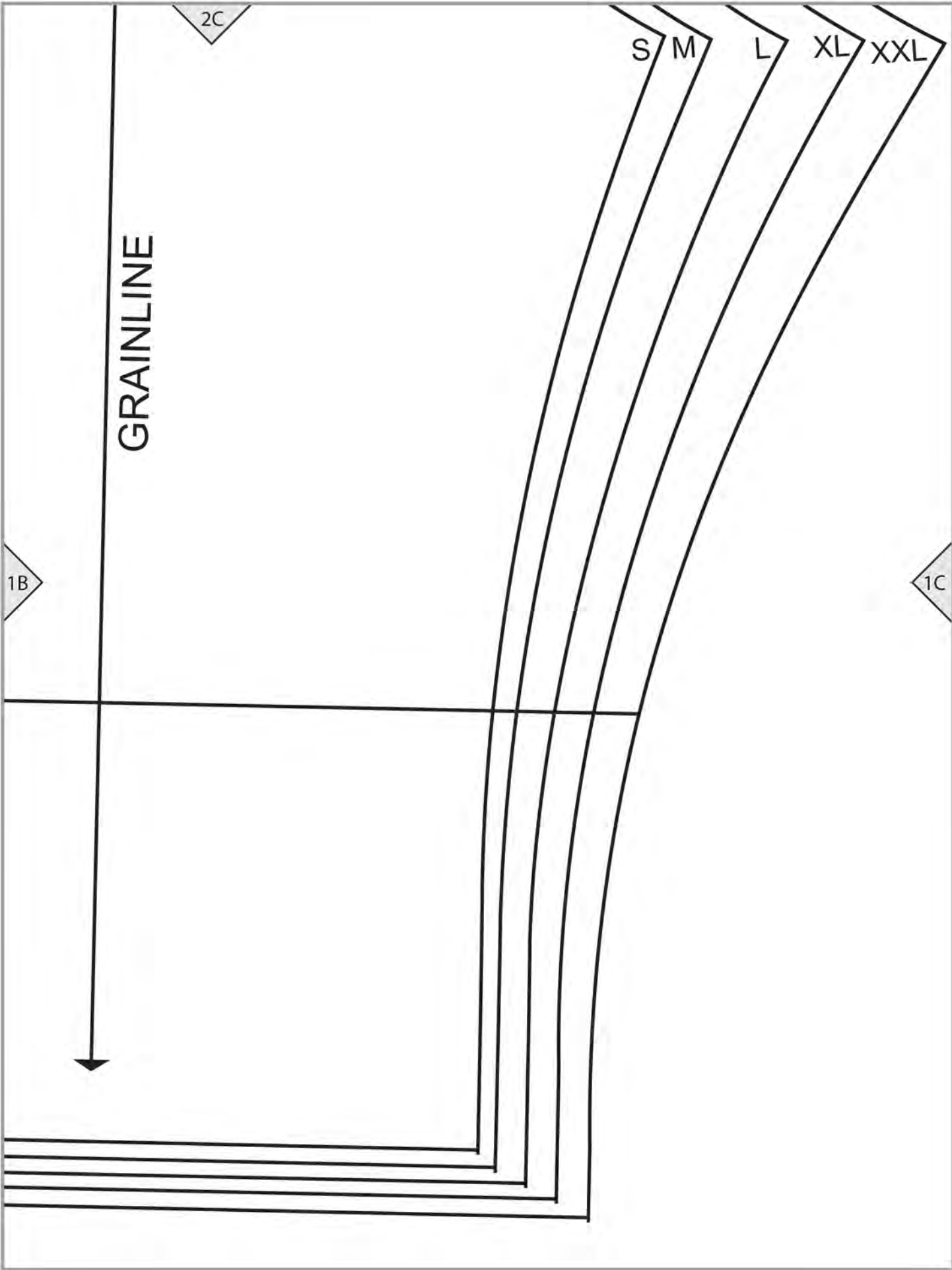
1A

1B

lengthen / shorten line

C3 cutting line





THE **MAGIC** 
PATTERN BOOK

BY AMY BARICKMAN

workman

workman.com

CHARLOTTE (C3)

TEST SQUARE
4" (10 cm)