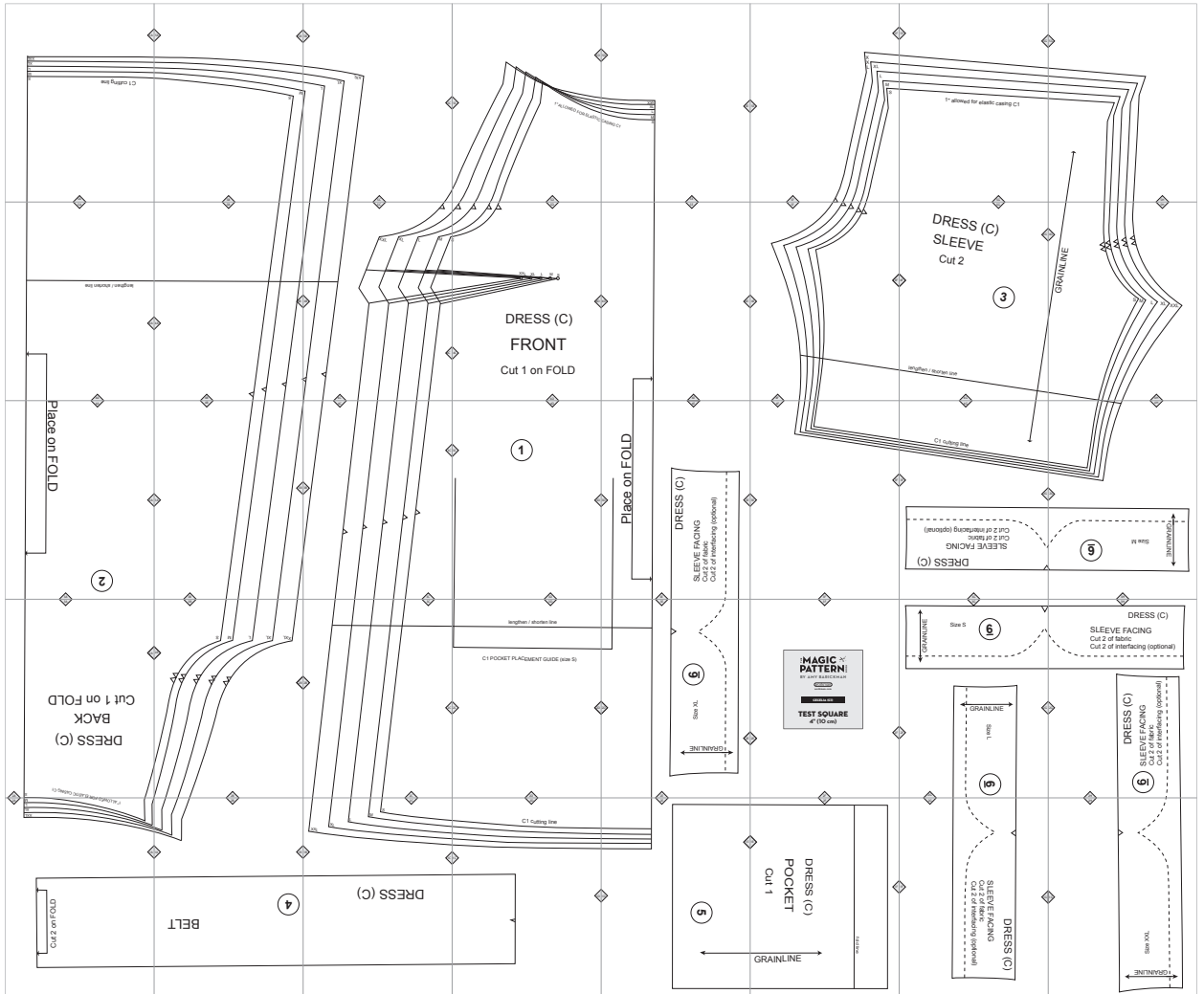


C1. Cecelia



Copyright ©2014 by Amy Barickman

All rights reserved. Amy Barickman's patterns may be printed for personal use, but may not be otherwise reproduced—mechanically, electronically, or by any other means, including photocopying—without written permission of the publisher.

Sewing pattern designs for *The Magic Pattern Book* by Amy Barickman are intended for personal use only, and not as the basis for commercial manufacturing.

Workman Publishing, New York • workman.com

5A

TX

TX

L

M

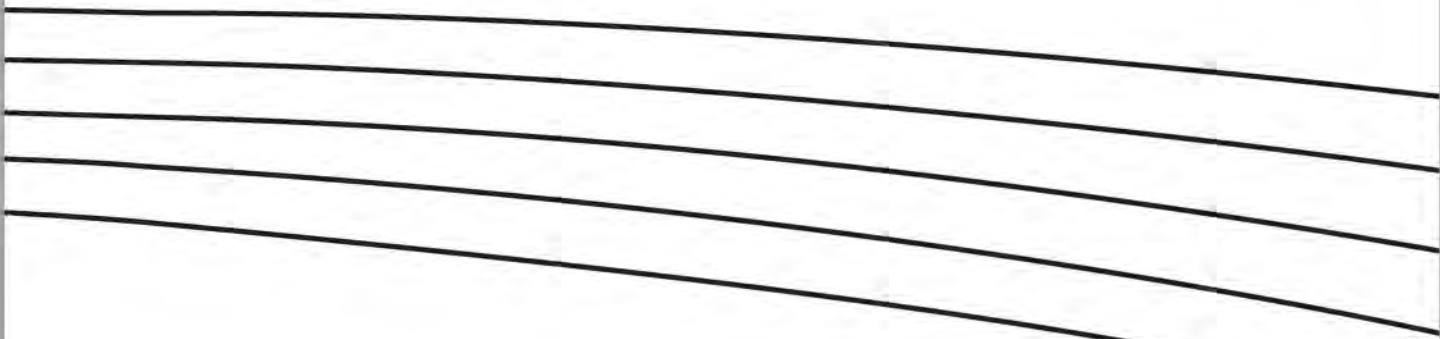
S

C1 cutting line

5A

5A

5B

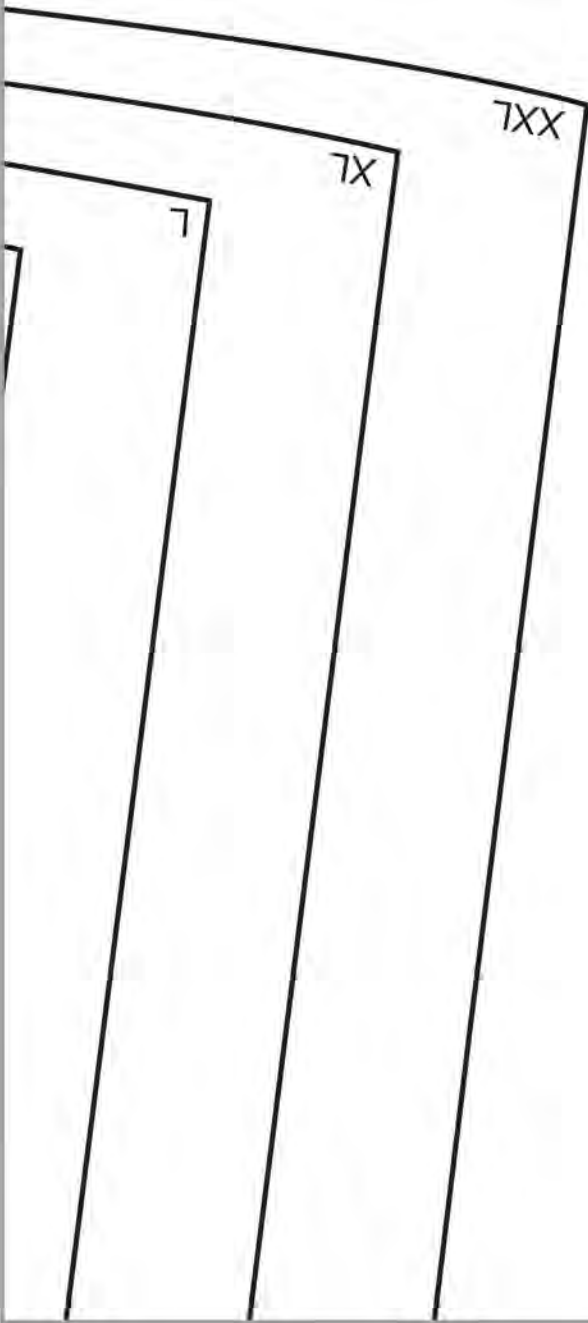


S

W

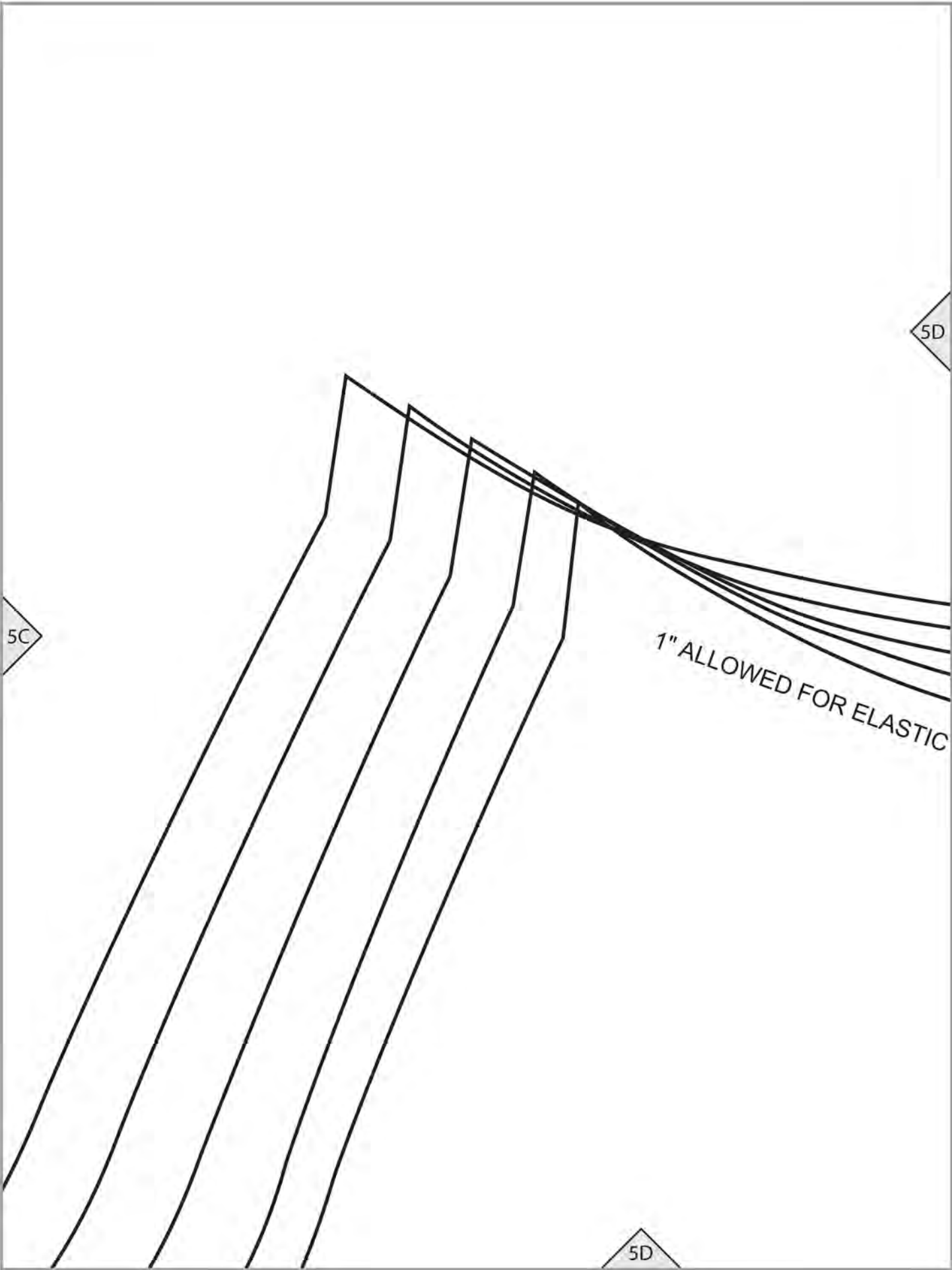
5B

5B



5C

5C



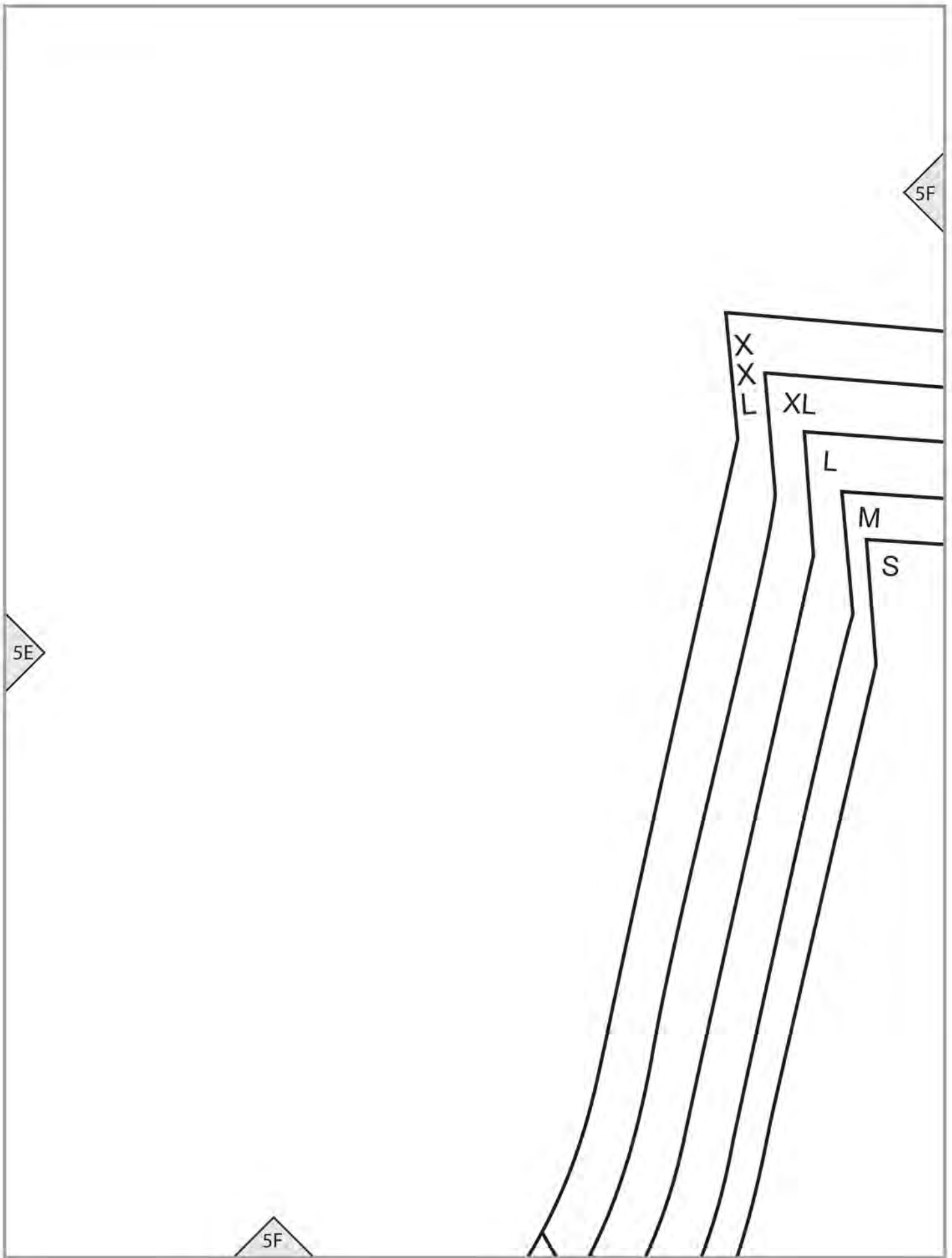
5D

XXL
XL
L
M
S

CASING C1

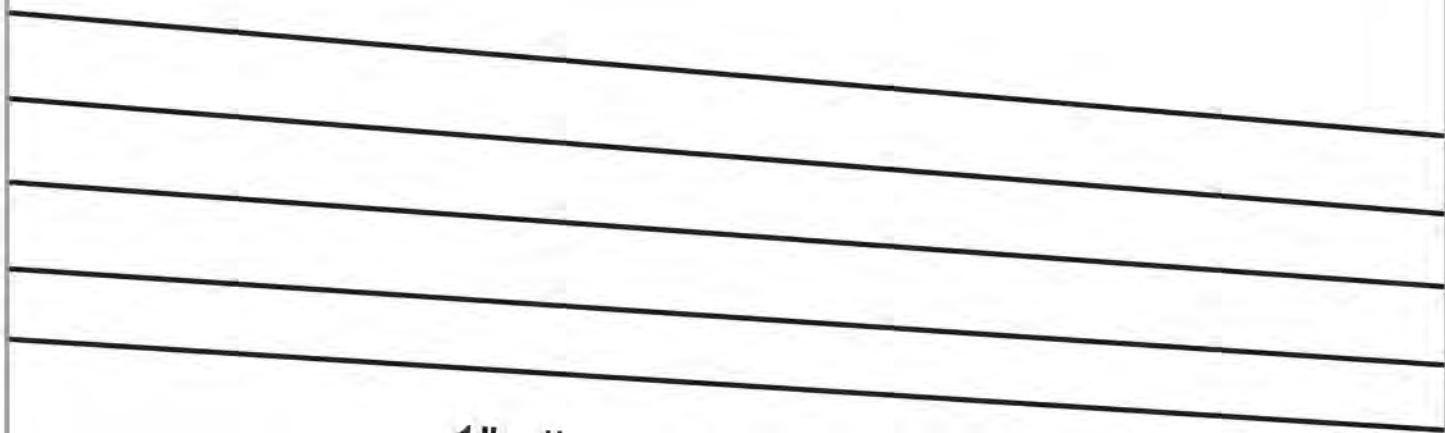
5E

5E



5F

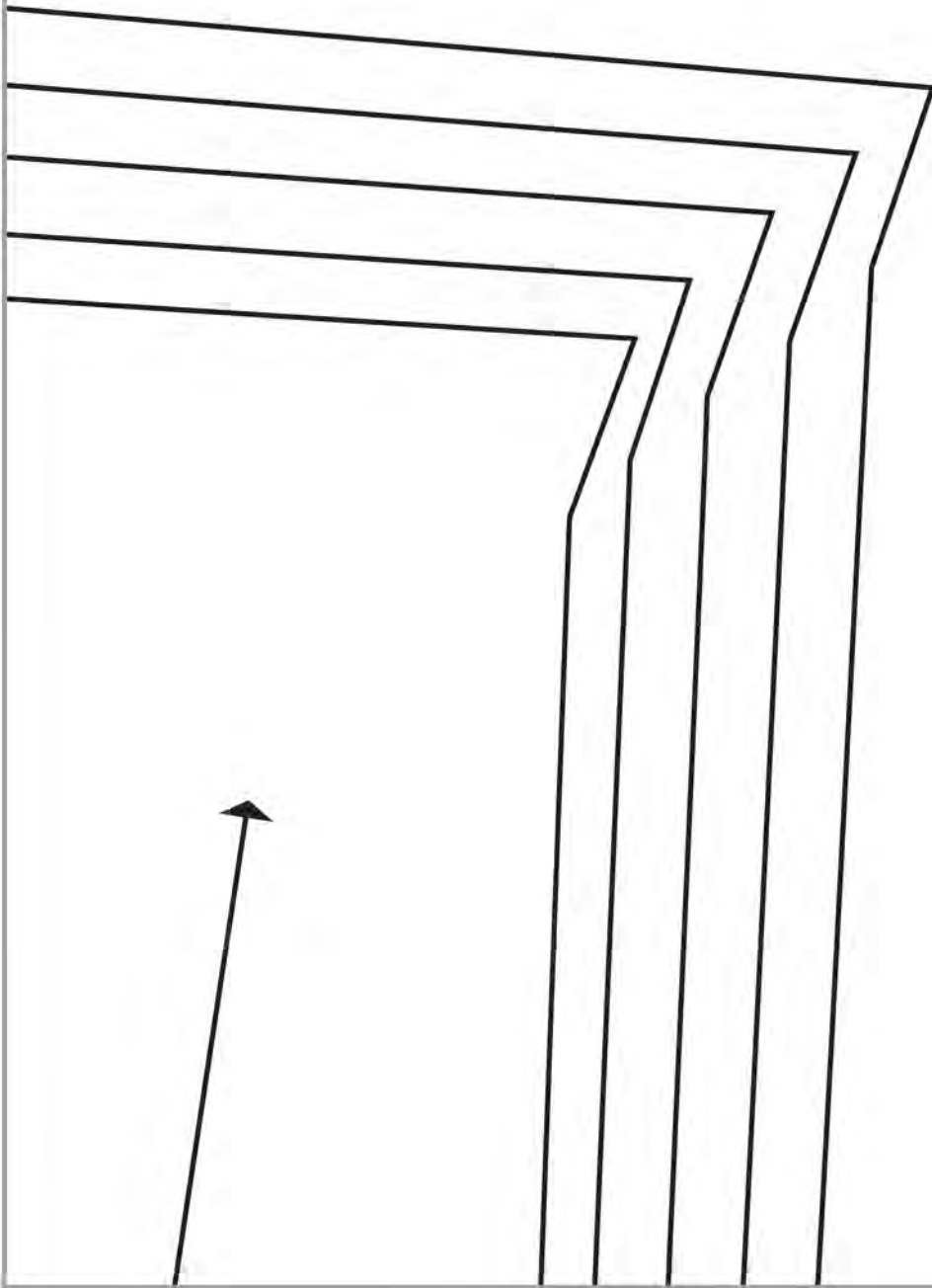
5G



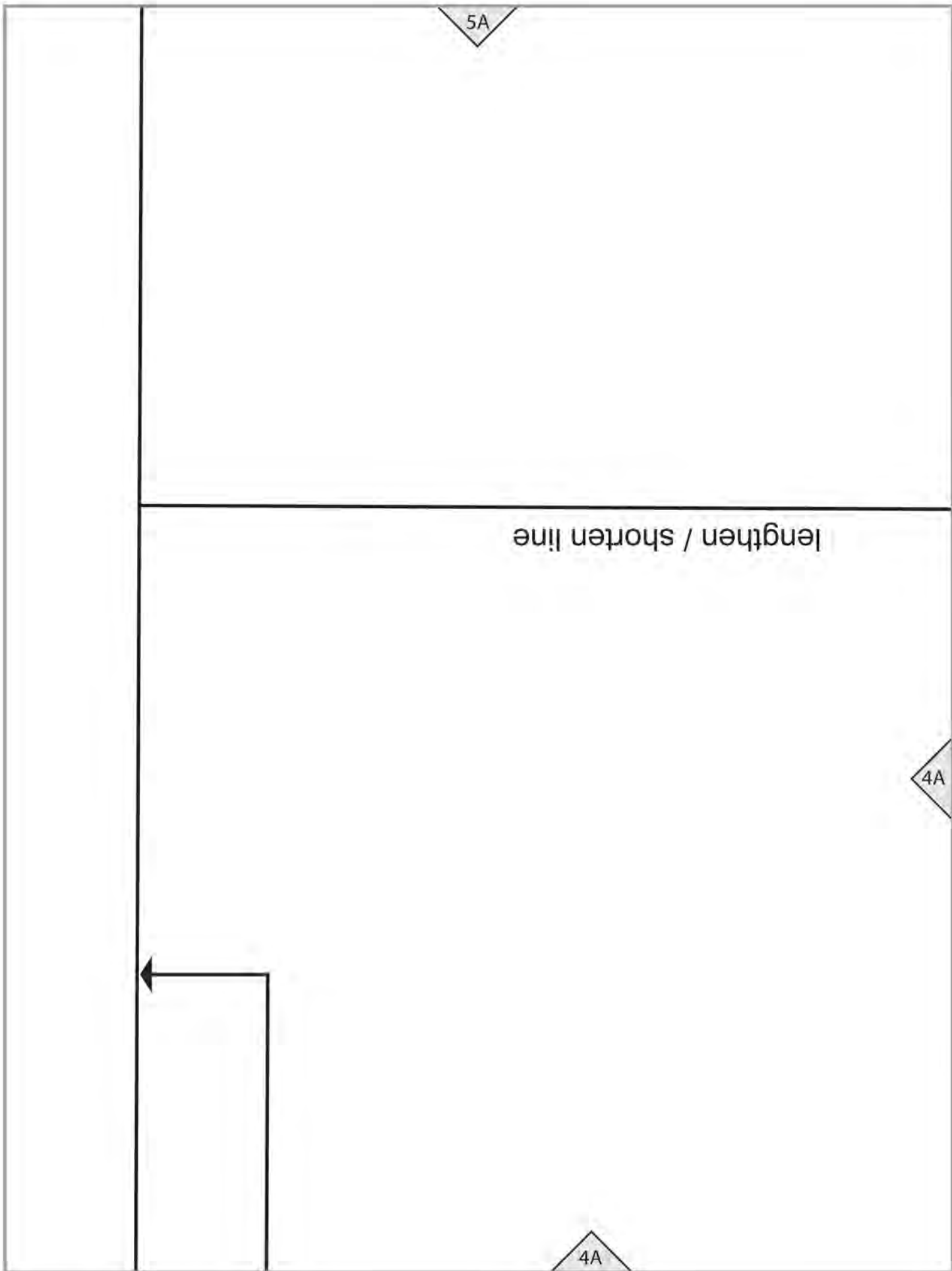
1" allowed for elastic casing C1

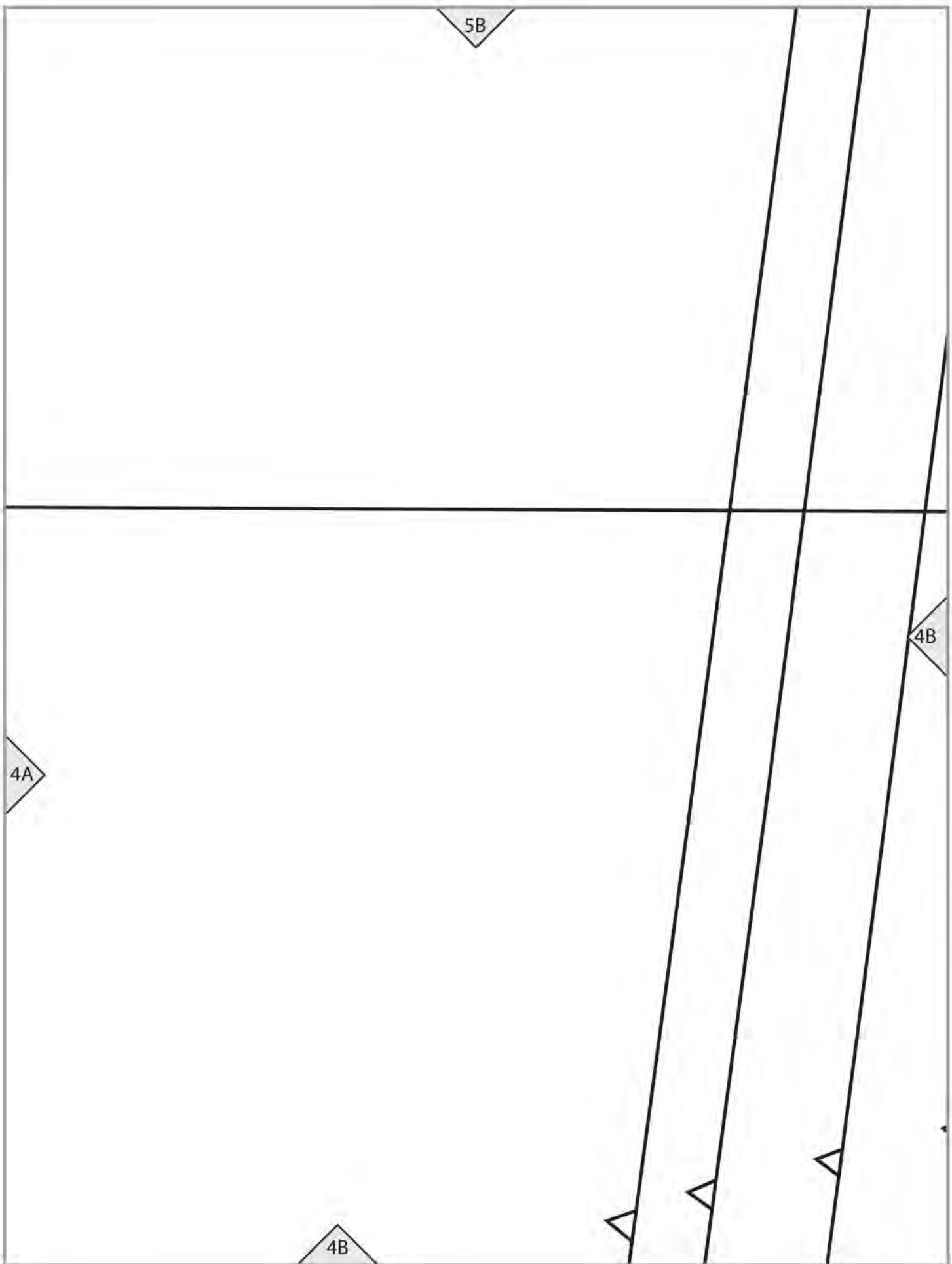
5G

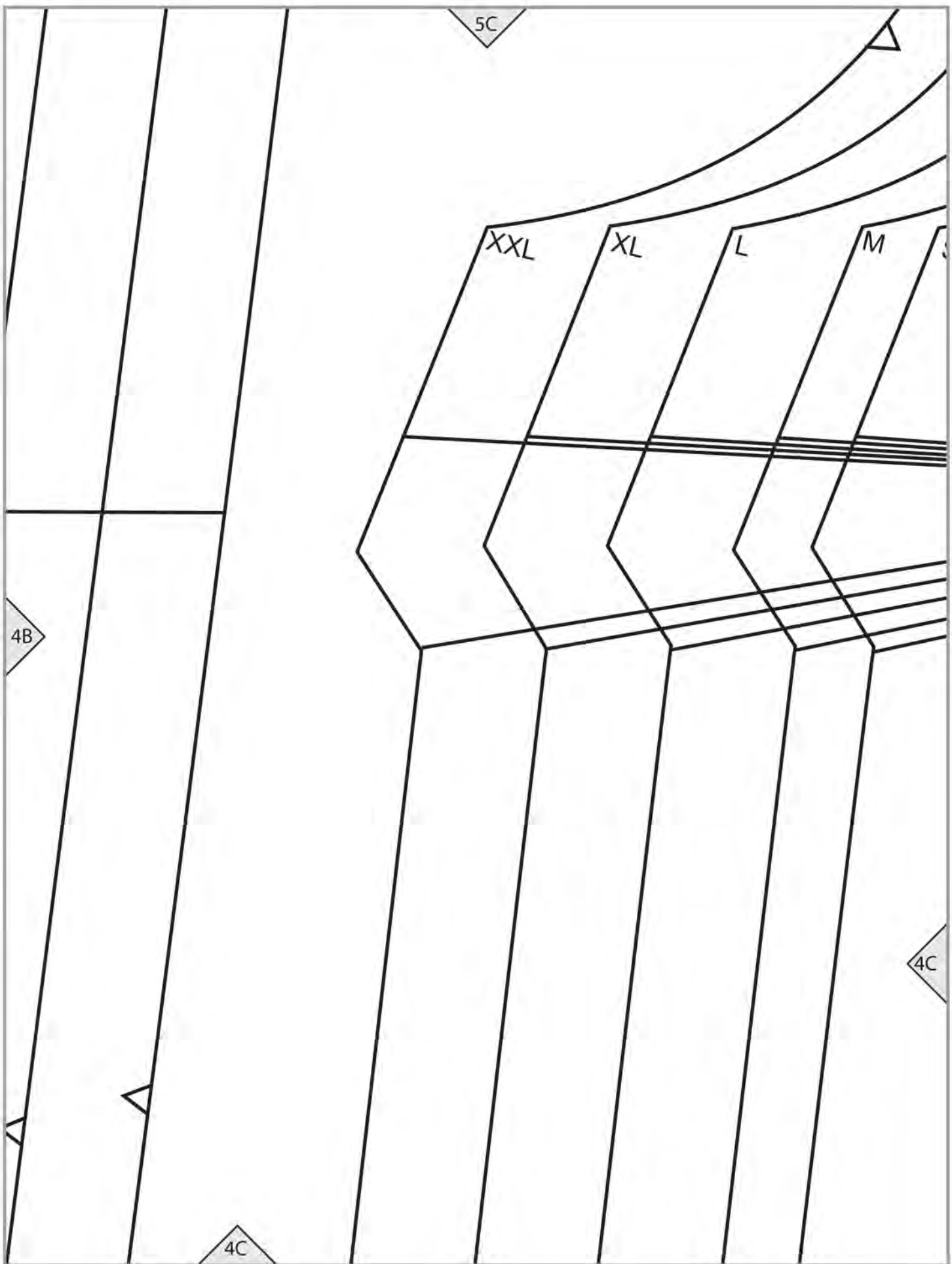
5G

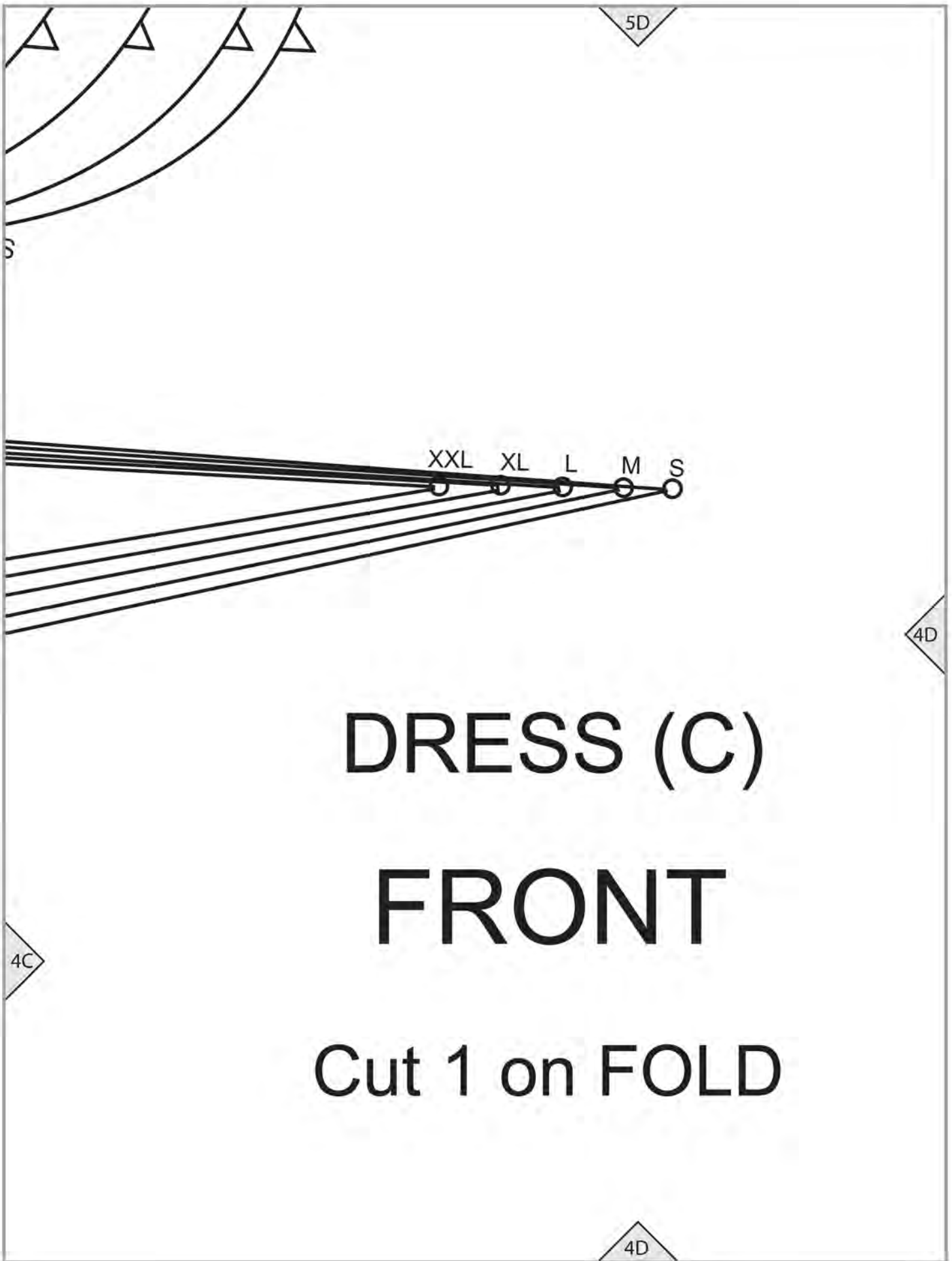


5H









5D

3

XXL XL L M S

4D

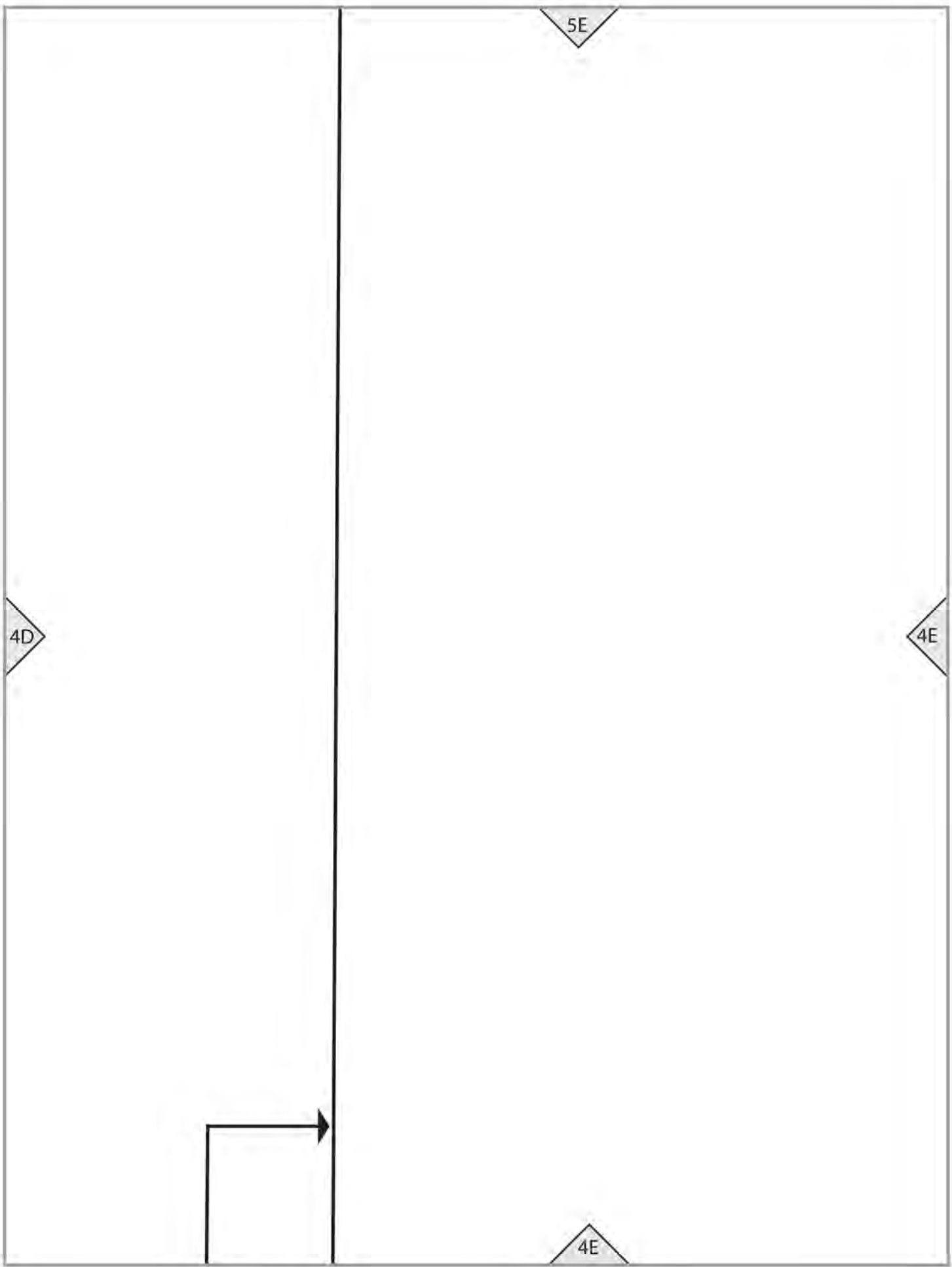
DRESS (C)

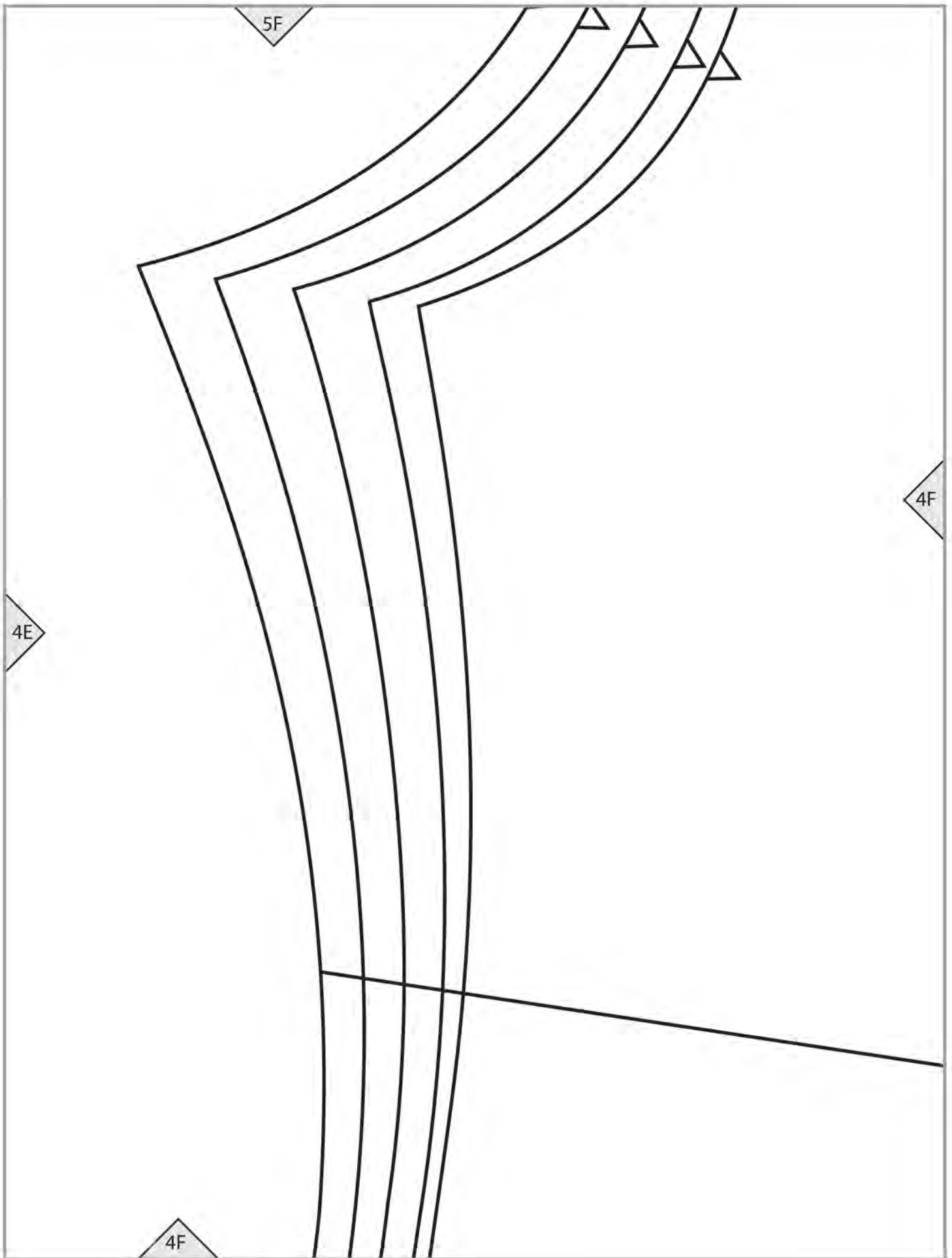
FRONT

4C

Cut 1 on FOLD

4D





DRESS (C) SLEEVE

Cut 2

3

lengthen / shorten line

5G

4G

4F

4G

4G

5H

GRAINLINE



S

M

L

XL

XXL

4H

4A

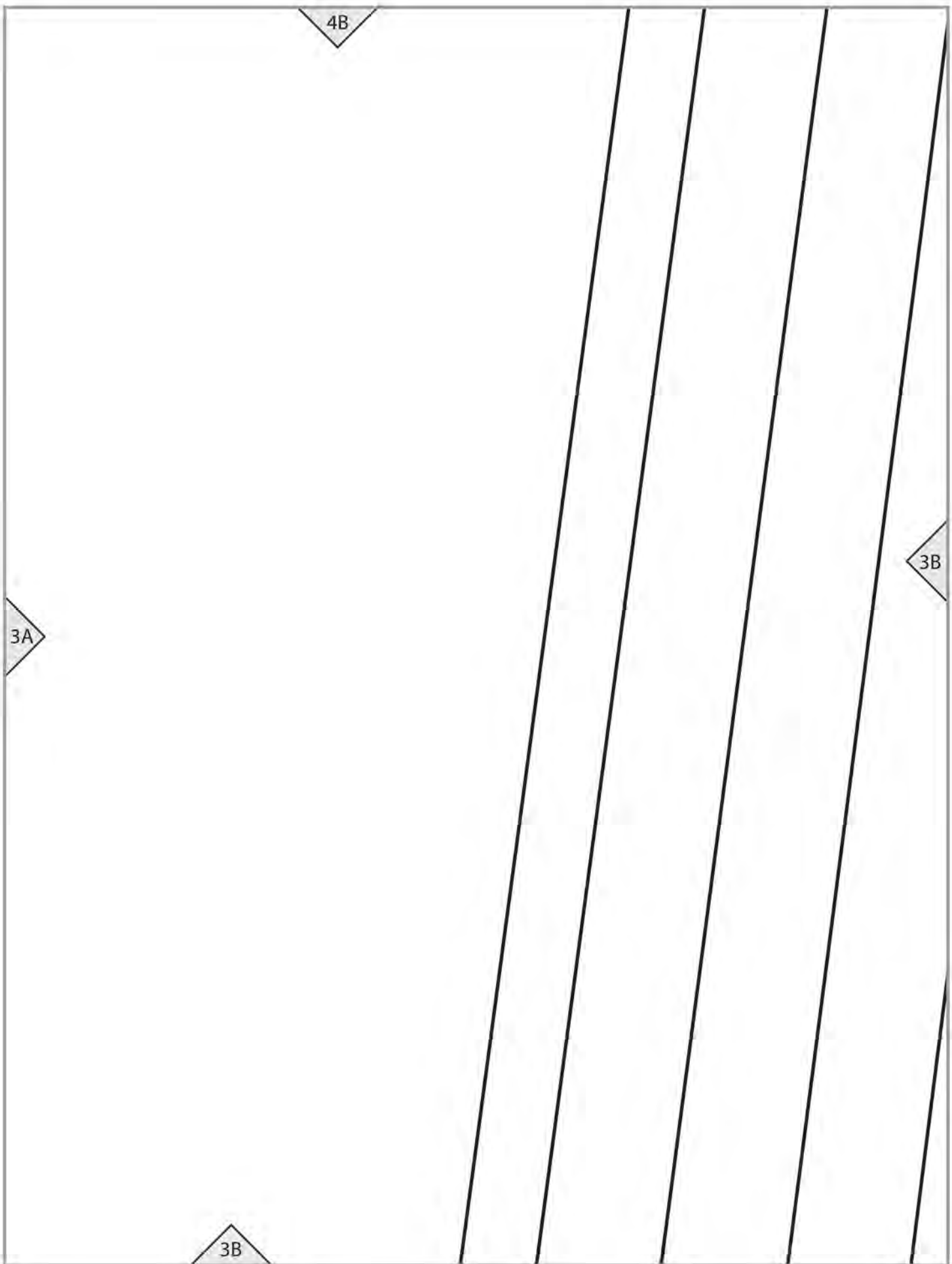
3A

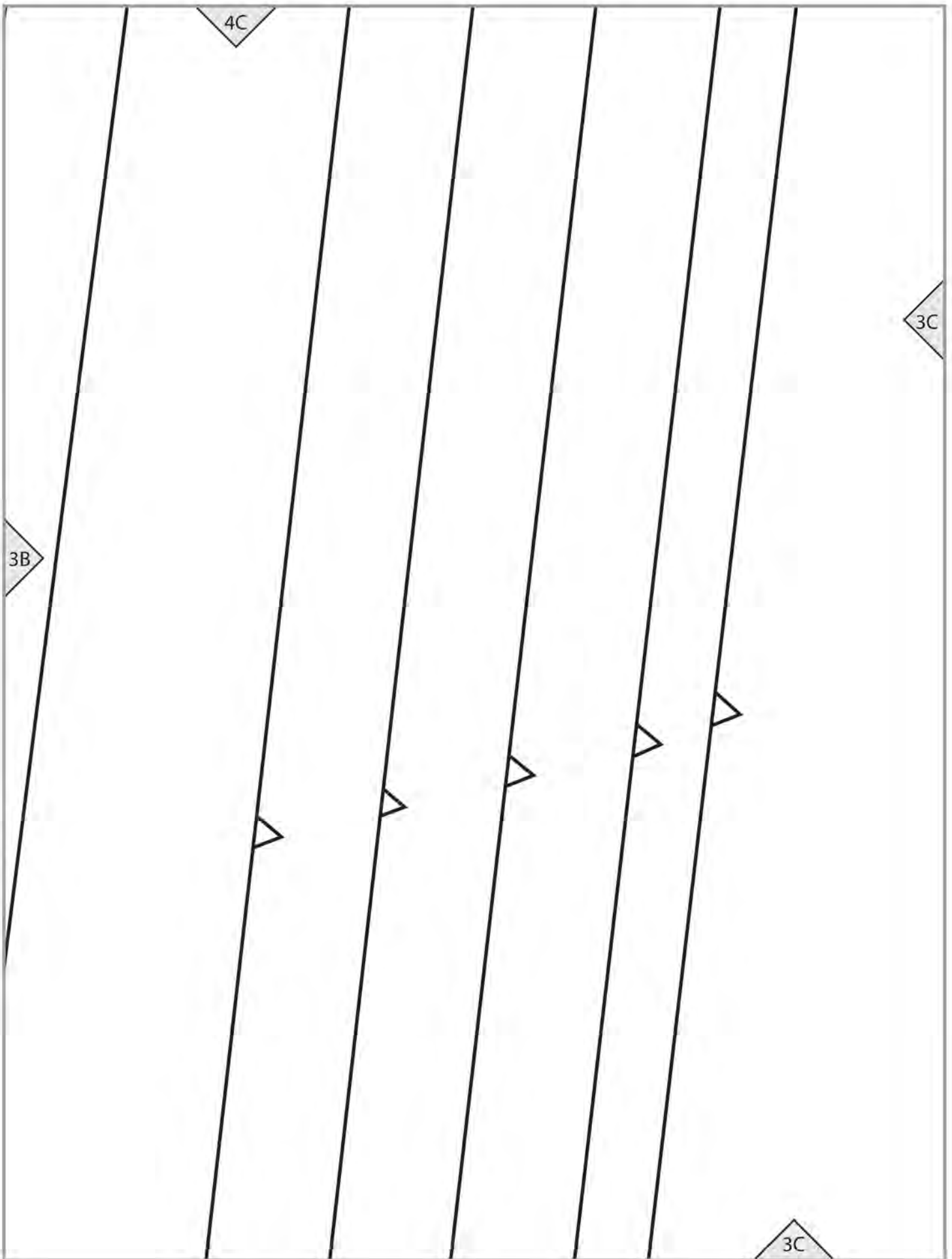
2

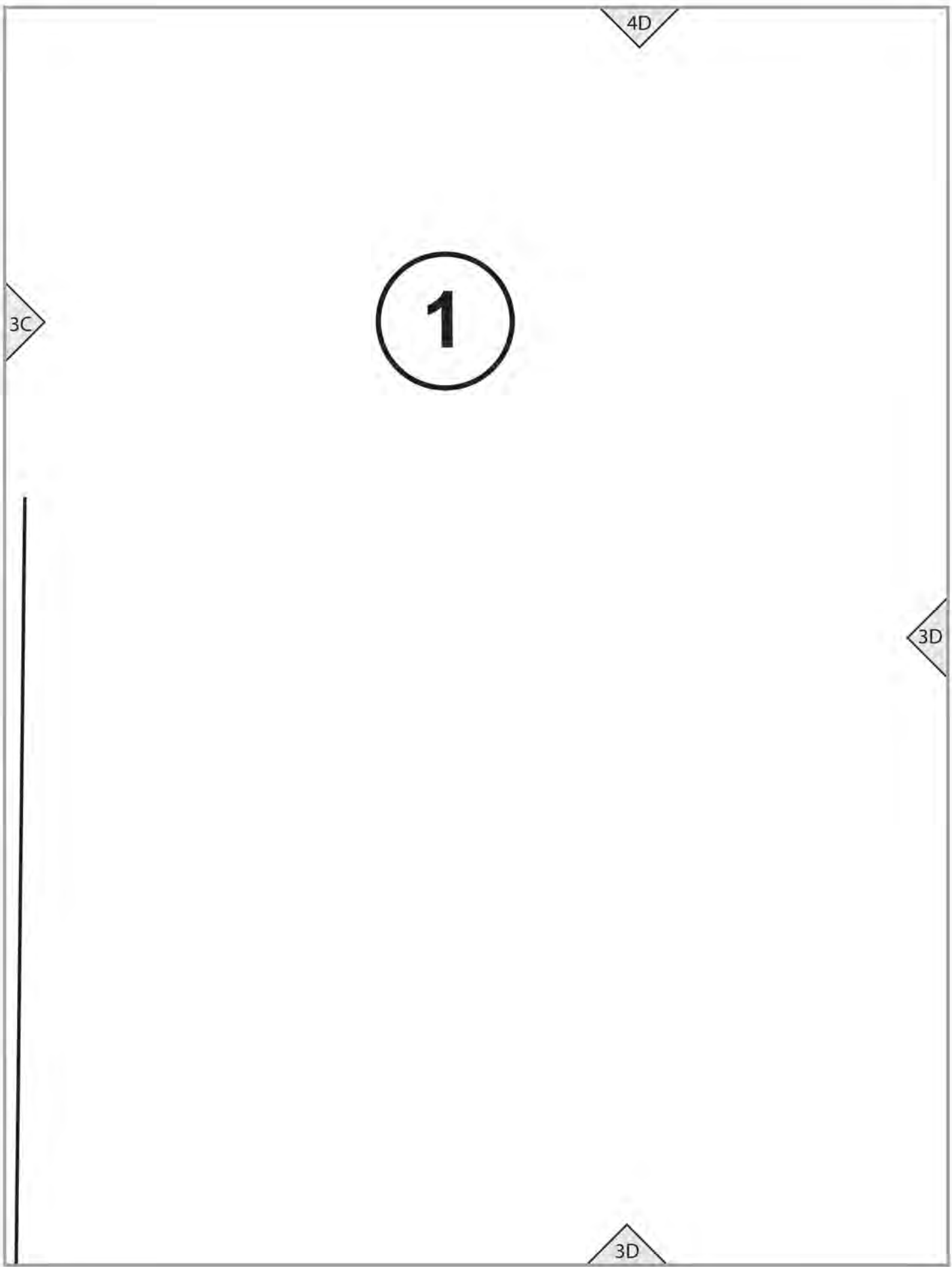
3A

Place on FOLD









3D

Place on FOLD



3E

DRESS (C)

SLEEVE FACING

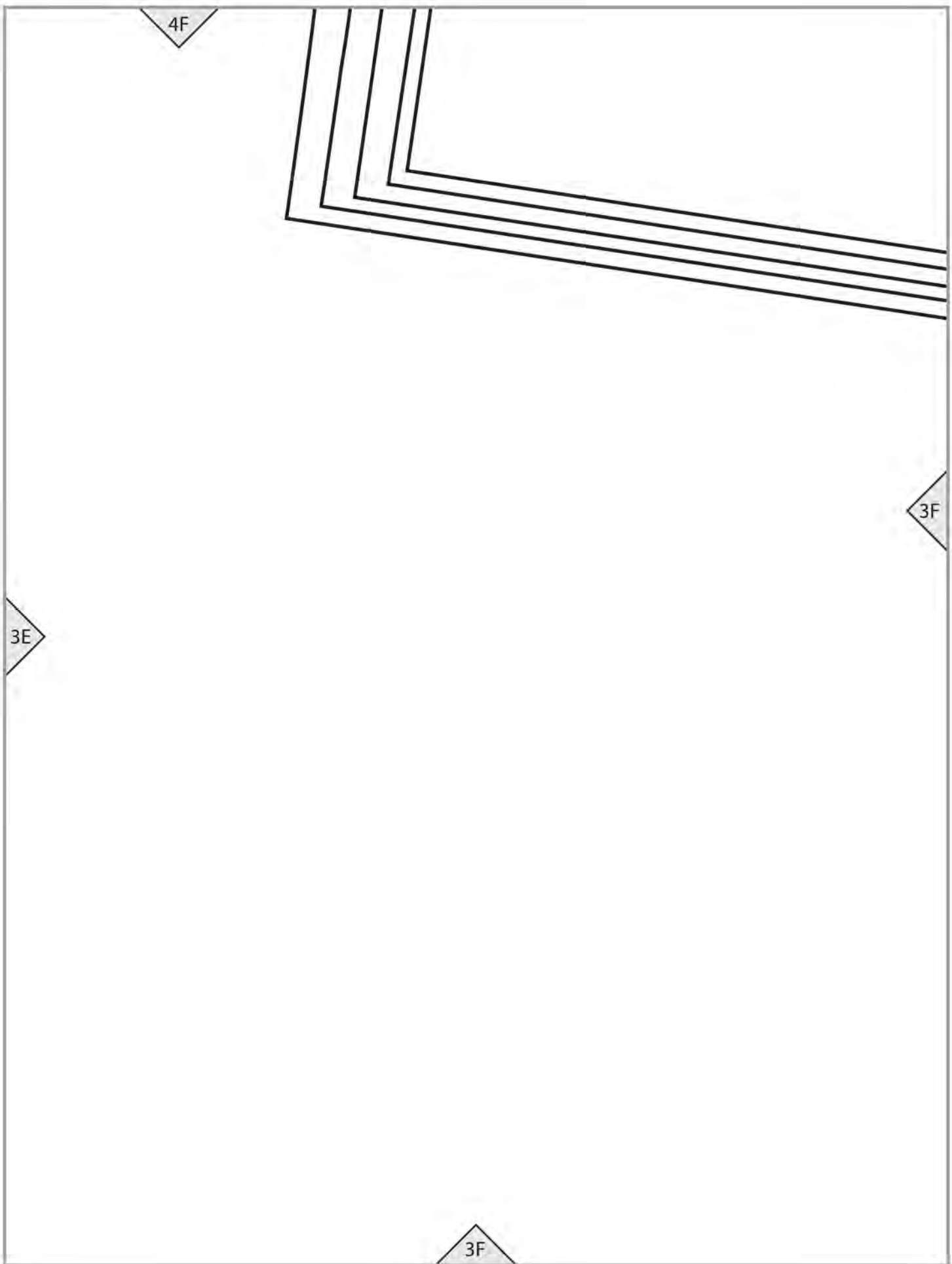
Cut 2 of fabric

Cut 2 of interfacing (optional)



3E

4E



4G

C1 cutting line

3F

2G

DRESS (C)

SLEEVE FACING

Cut 2 of fabric

Cut 2 of interfacing (optional)

3G

4H

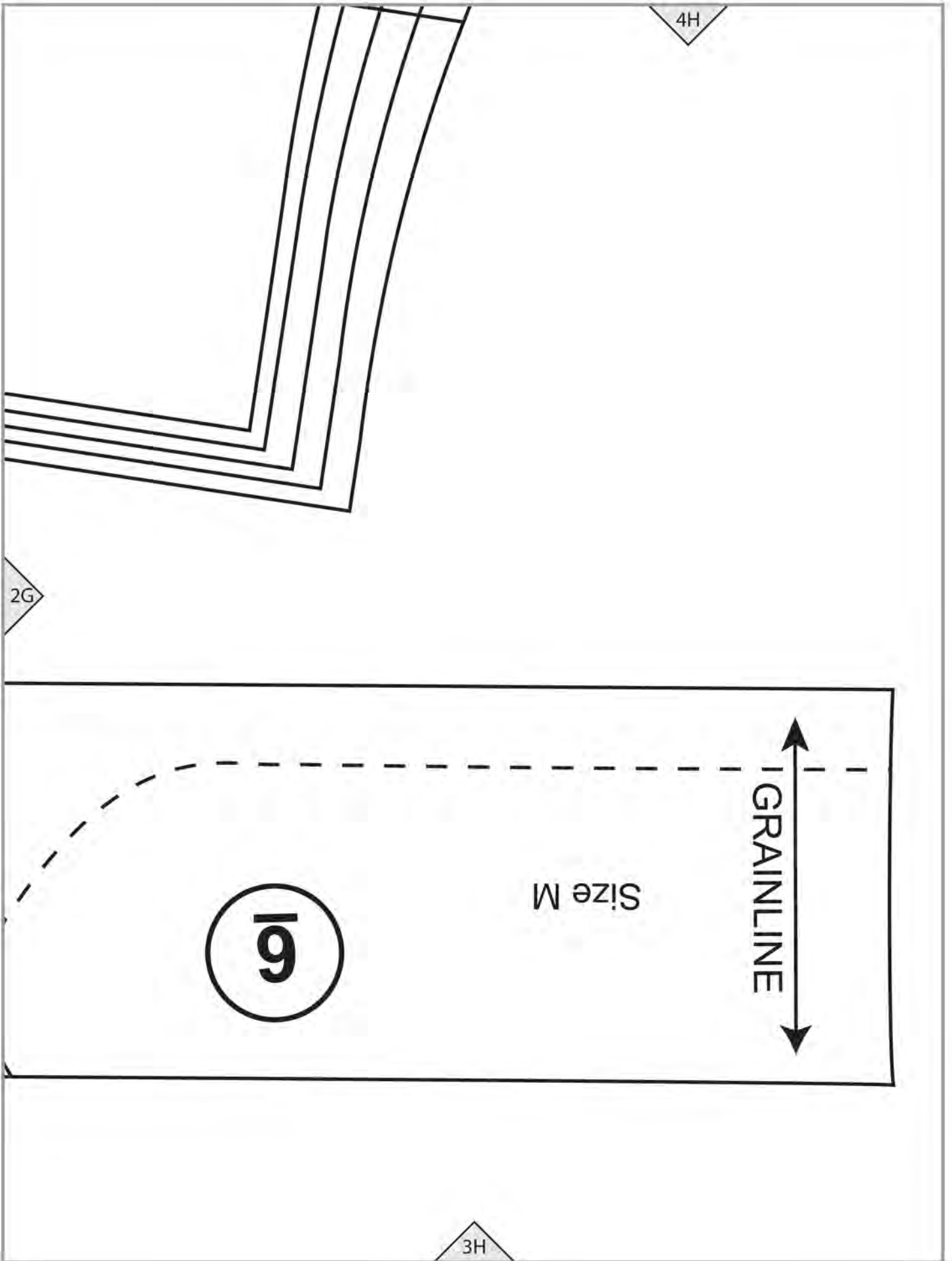
2G

Size M

6

GRAINLINE

3H



**DRESS (C)
BACK
Cut 1 on FOLD**

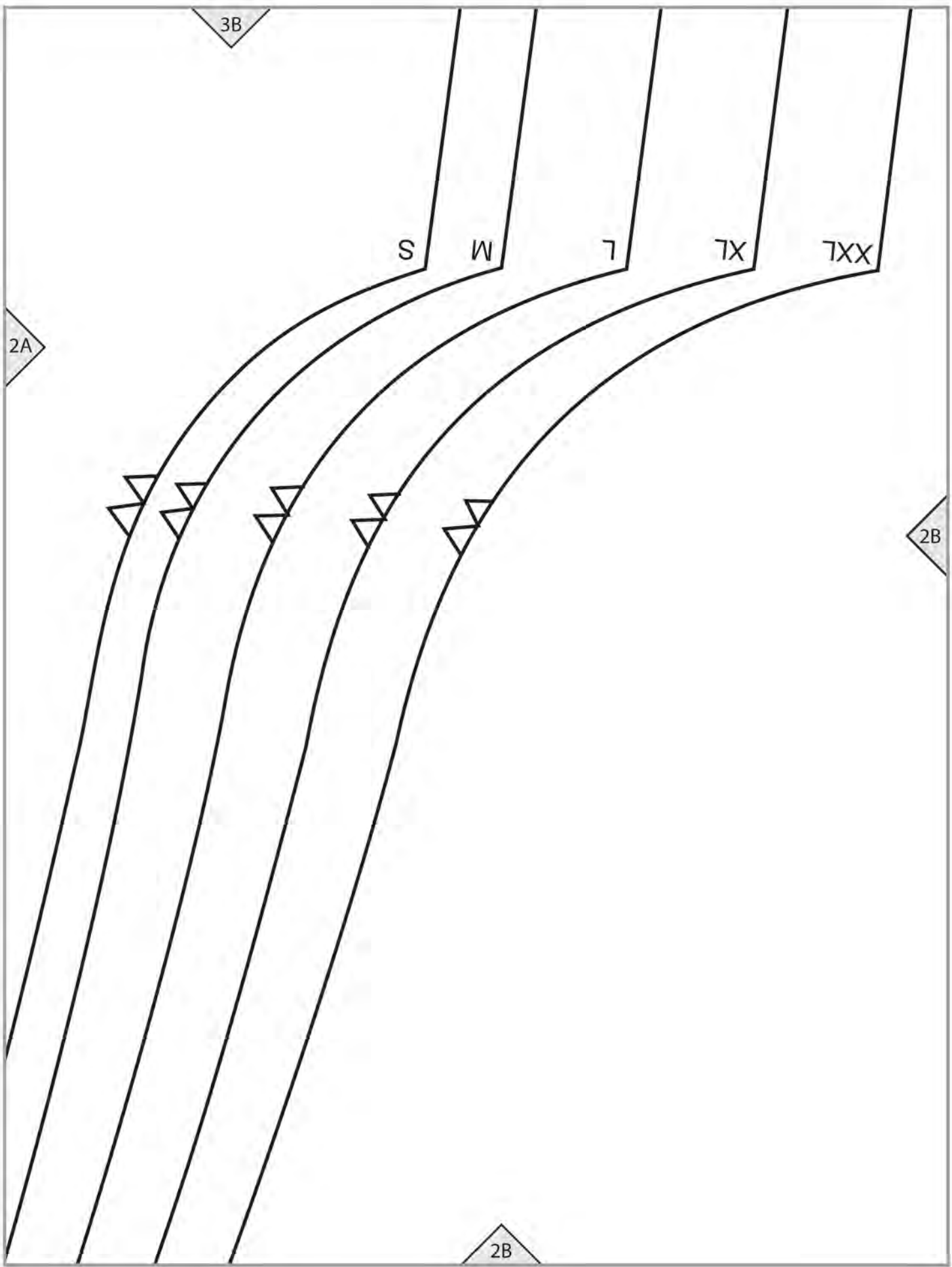
3A

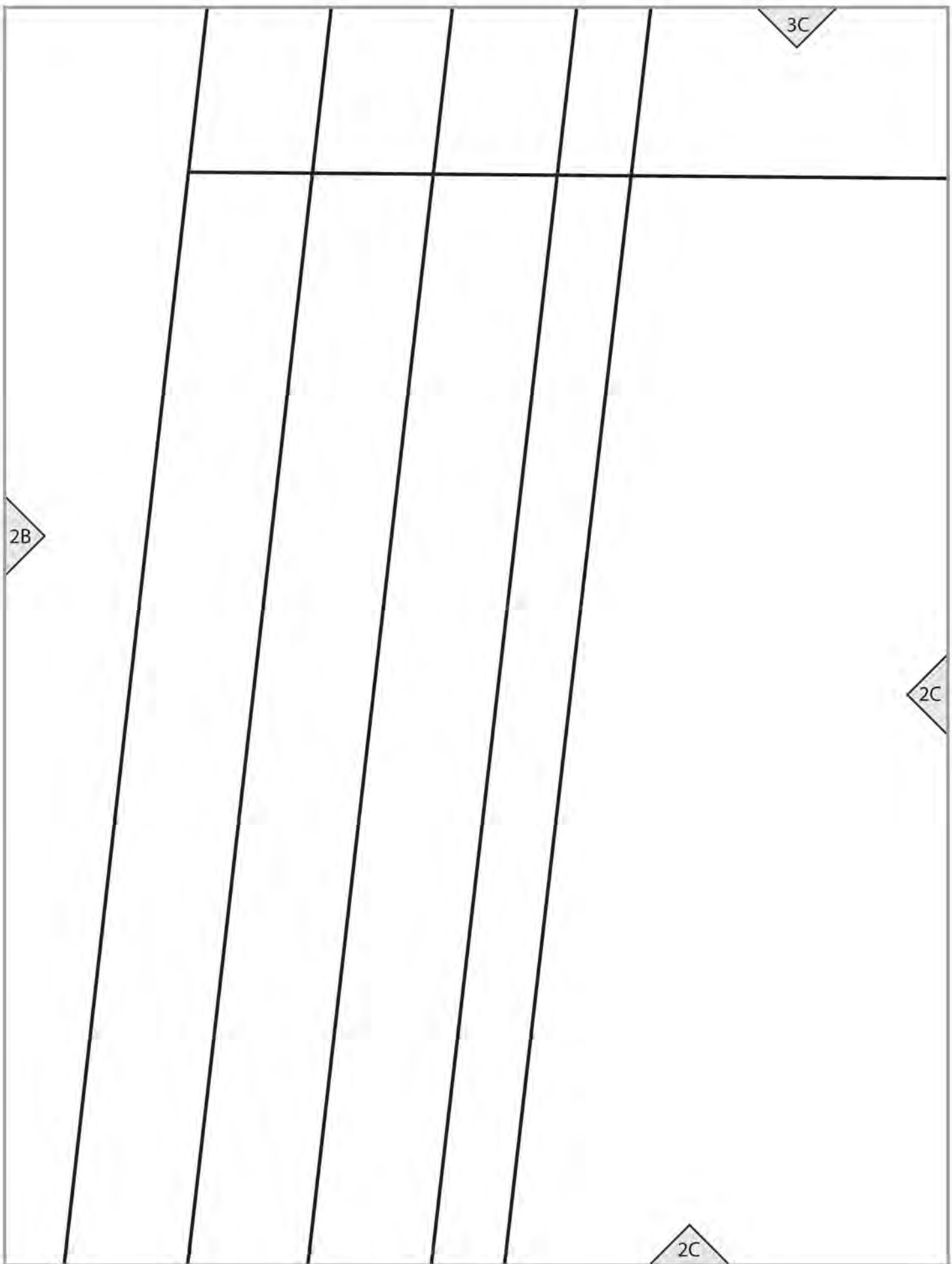
2A

2A

S

FOR ELASTIC CASING C1





3D

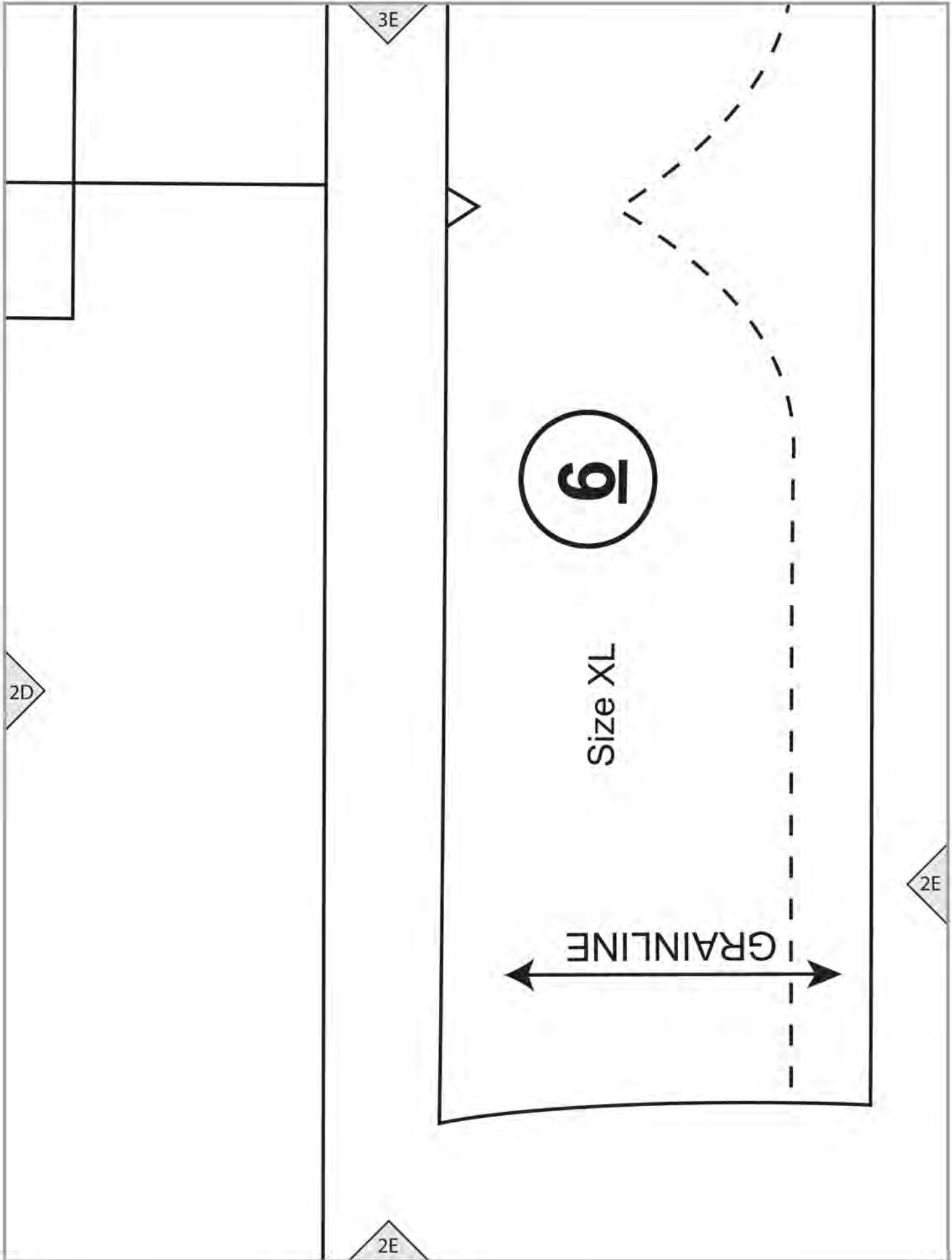
lengthen / shorten line

C1 POCKET PLACEMENT GUIDE (size S)

2C

2D

2D



3F

THE **MAGIC** 
PATTERN BOOK

BY AMY BARICKMAN

workman

workman.com

CECELIA (C1)

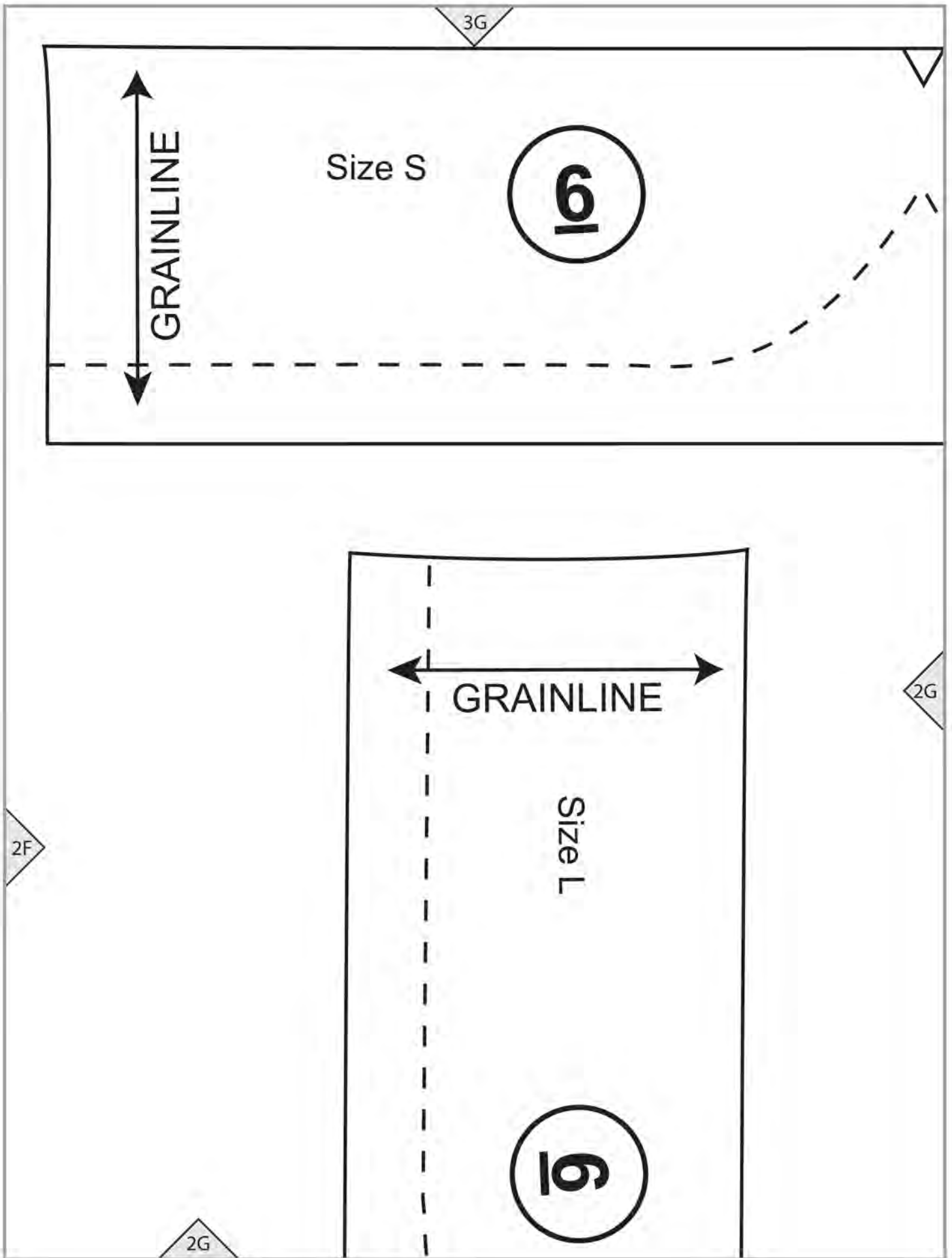
TEST SQUARE

4" (10 cm)

2E

2F

2F



3H

DRESS (C)

SLEEVE FACING

Cut 2 of fabric

Cut 2 of interfacing (optional)

2G

2H

DRESS (C)

SLEEVE FACING

Cut 2 of fabric

Cut 2 of interfacing (optional)

6

2A

M

L

XL

XXL

1" ALLOWED FOR

1A

Cut 2 on FOLD



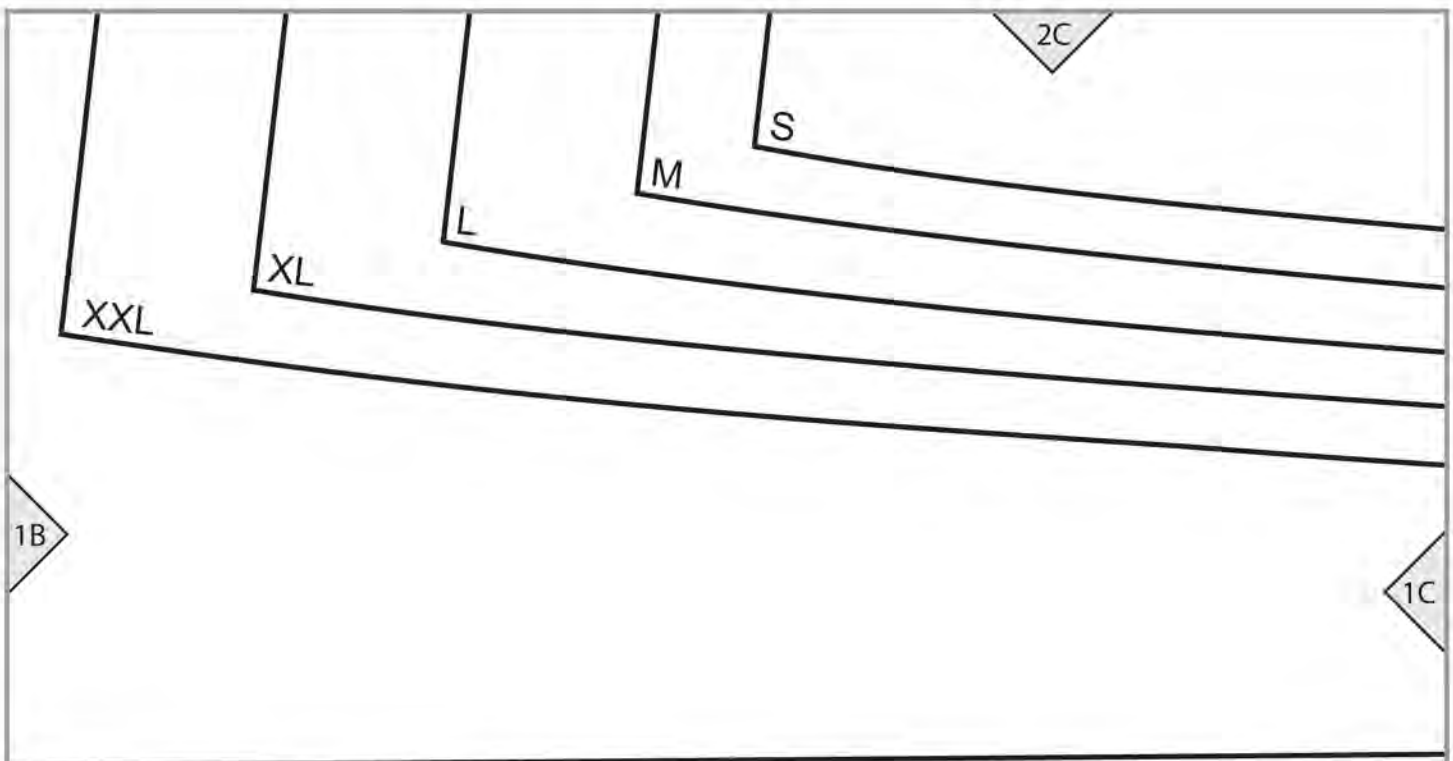
2B

1A

1B



BELT



DRESS (C)

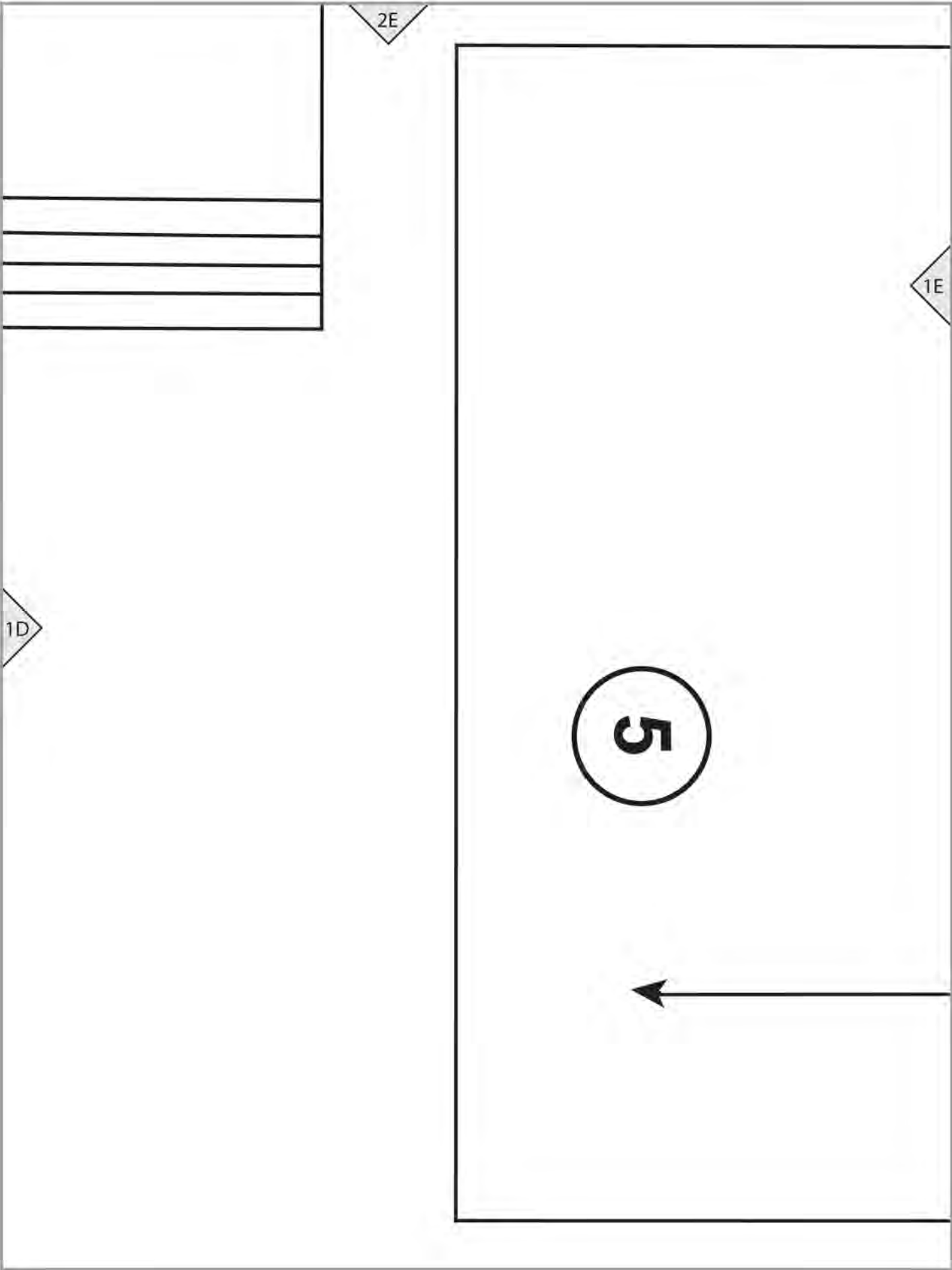
2D

C1 cutting line

1C

1D





2F

1E

1F

DRESS (C)

POCKET

Cut 1

fold line

GRAINLINE



1G

DRESS (C)

SLEEVE FACING

Cut 2 of fabric

Cut 2 of interfacing (optional)

2G

1F

2H

1G

Size XXL

GRAINLINE

