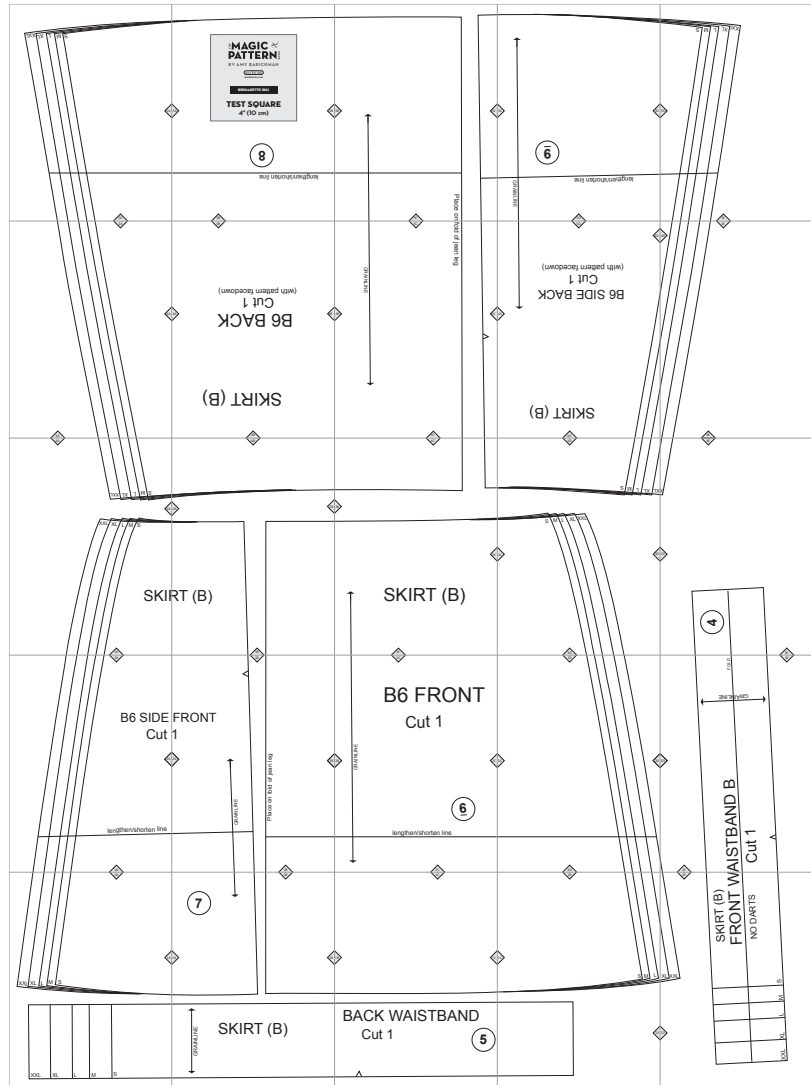


# B6. Bernadette



Copyright ©2014 by Amy Barickman

All rights reserved. Amy Barickman's patterns may be printed for personal use, but may not be otherwise reproduced—mechanically, electronically, or by any other means, including photocopying—without written permission of the publisher.

Sewing pattern designs for *The Magic Pattern Book* by Amy Barickman are intended for personal use only, and not as the basis for commercial manufacturing.

Workman Publishing, New York • [workman.com](http://workman.com)

TXX TX T W S

5A

5A

THE **MAGIC**   
**PATTERN** BOOK

BY AMY BARICKMAN

workman

workman.com

**BERNADETTE (B6)**

**TEST SQUARE**

4" (10 cm)

5A

5B

8

lengthen/shorten line

5B

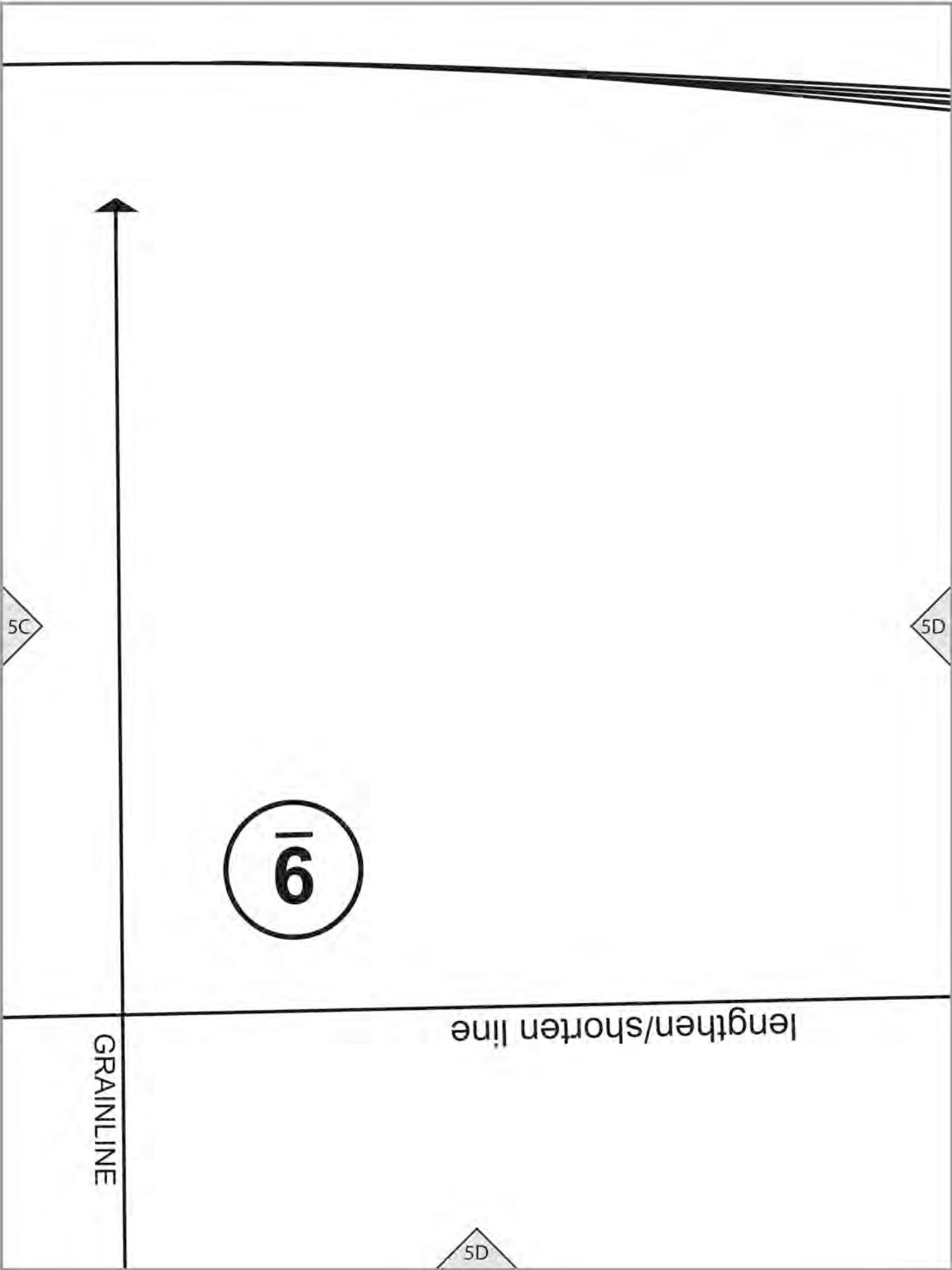
5B

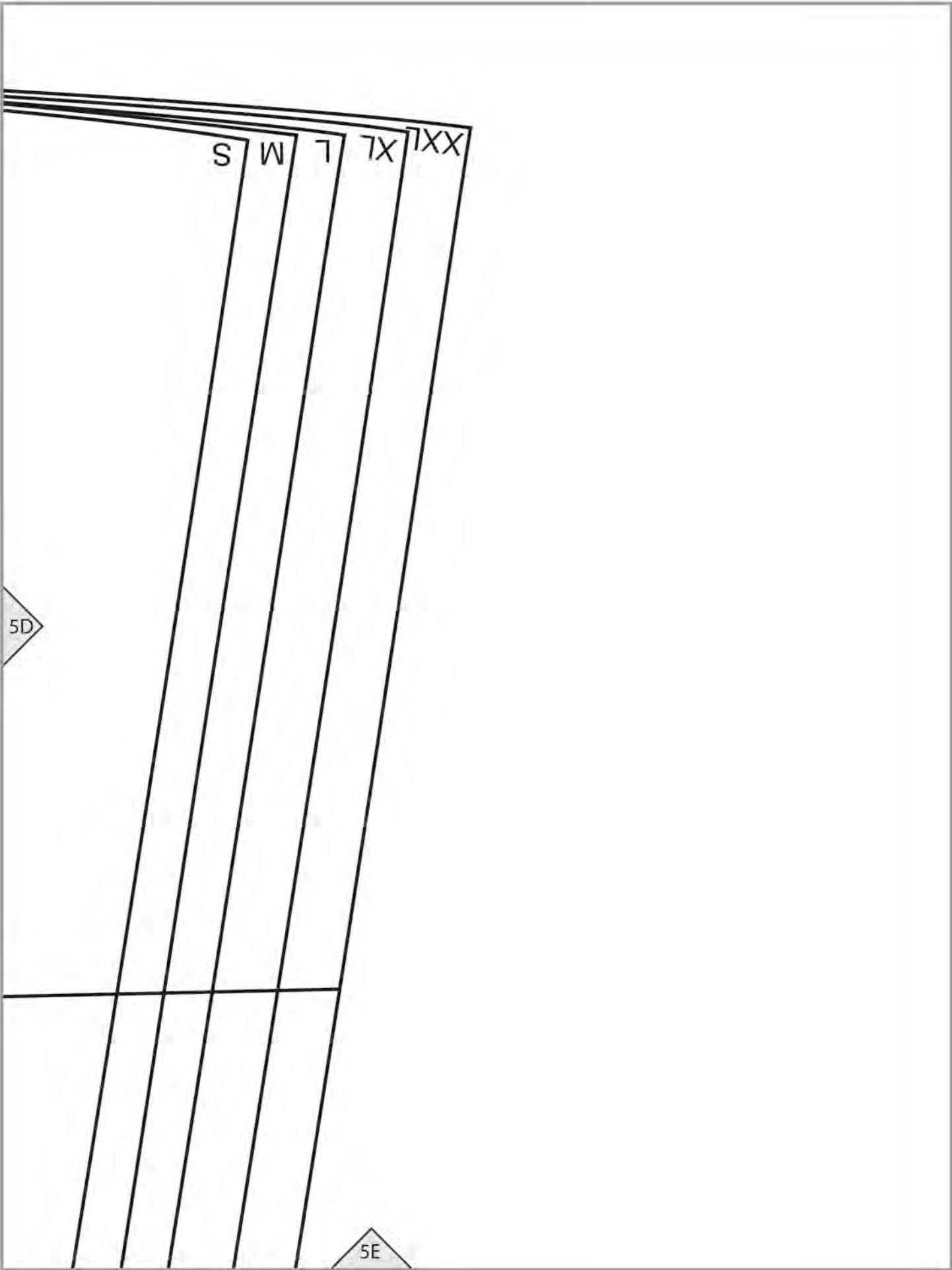


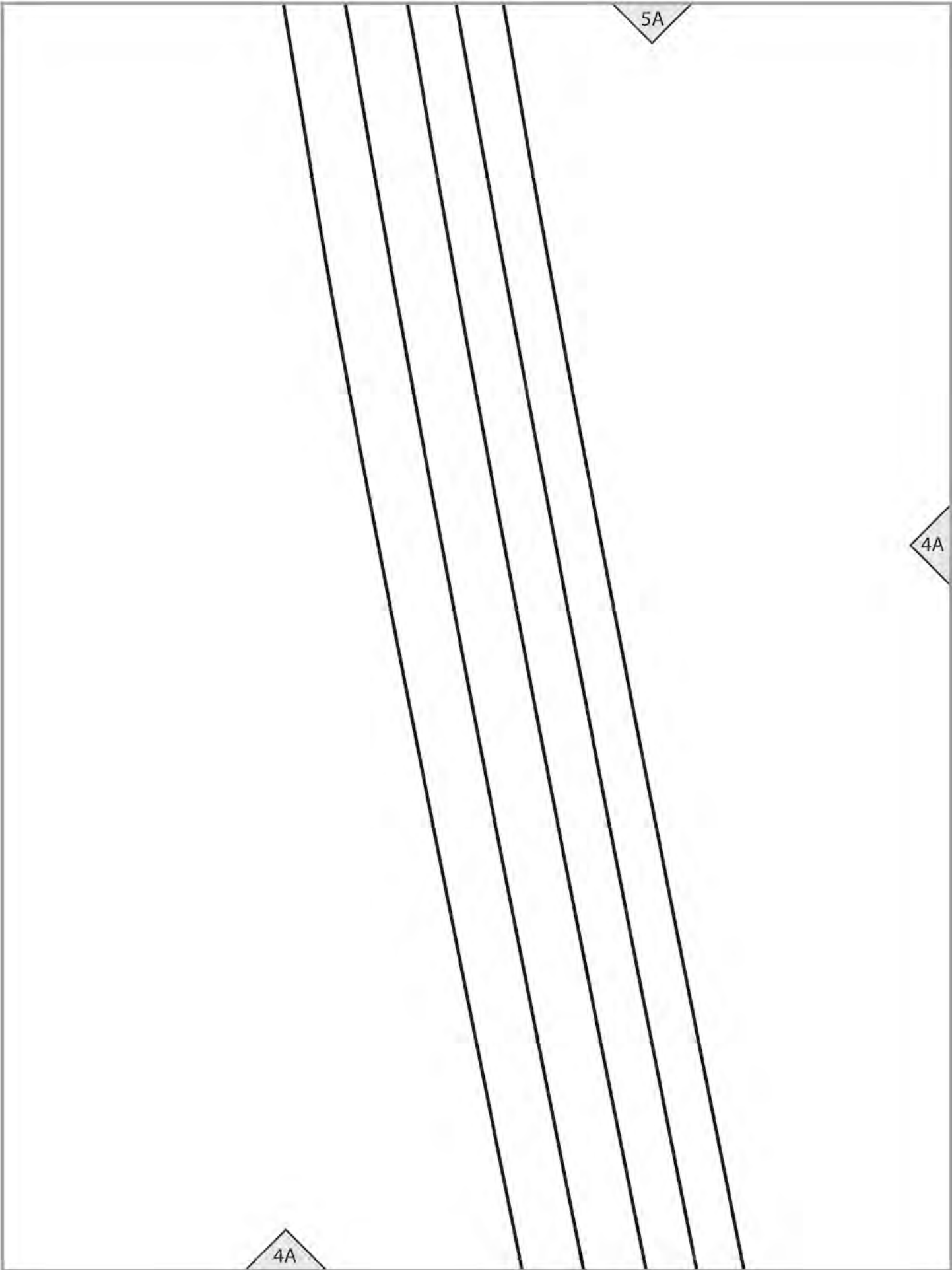
5C

5C

Place on







5A

4A

4A

5B

(with pattern facedown)

Cut 1

**B6 BACK**

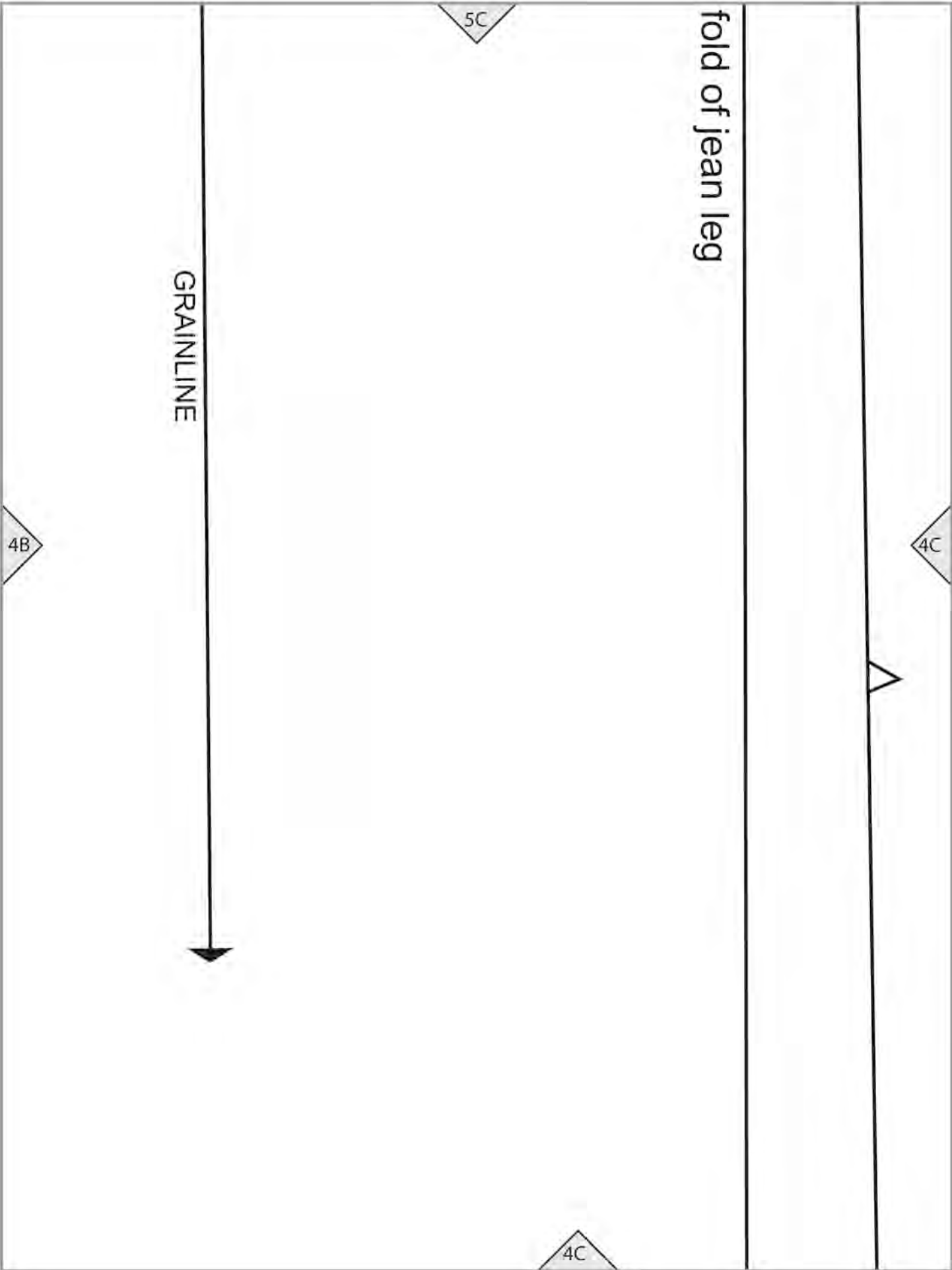
4A

4B

**SKIRT (B)**

4B





**B6 SIDE BACK**  
**Cut 1**  
(with pattern facedown)

**SKIRT (B)**



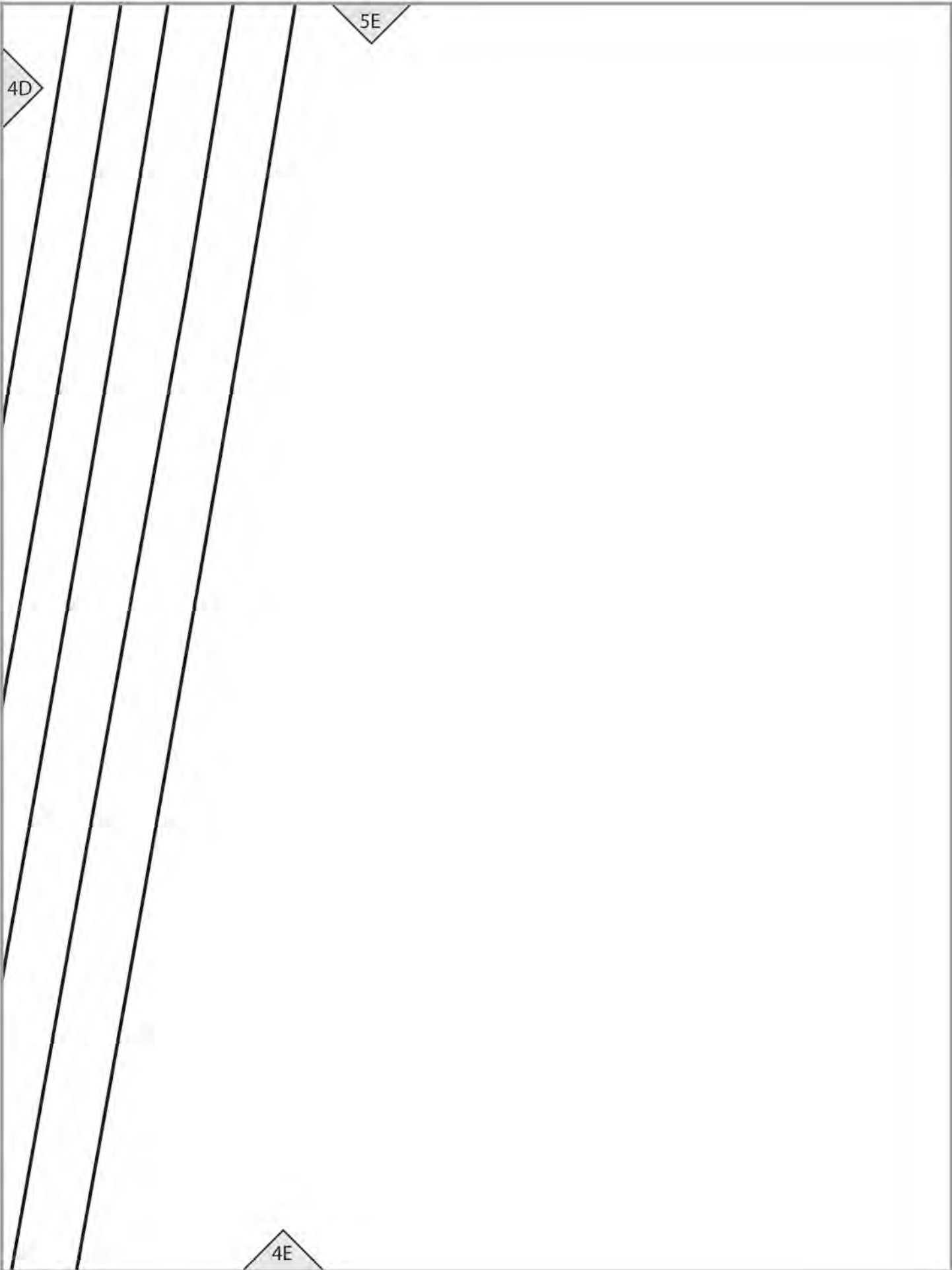
5D

4D

4C

4D





4A

7XX 7X 7 W S

3A

XXL XL L M S

SKIP

3A

4B

3A

3B

RT (B)

3B

4C

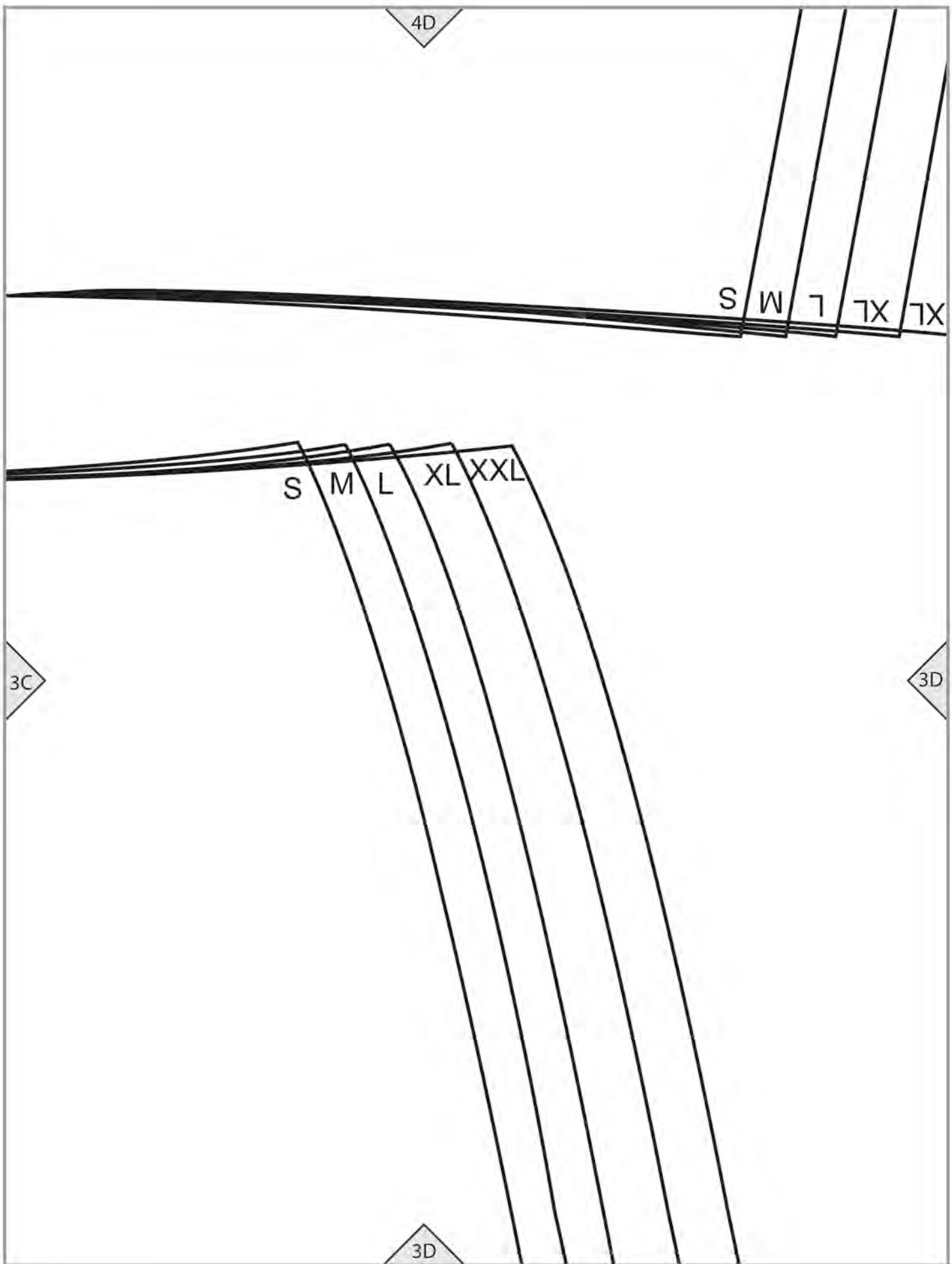
3B

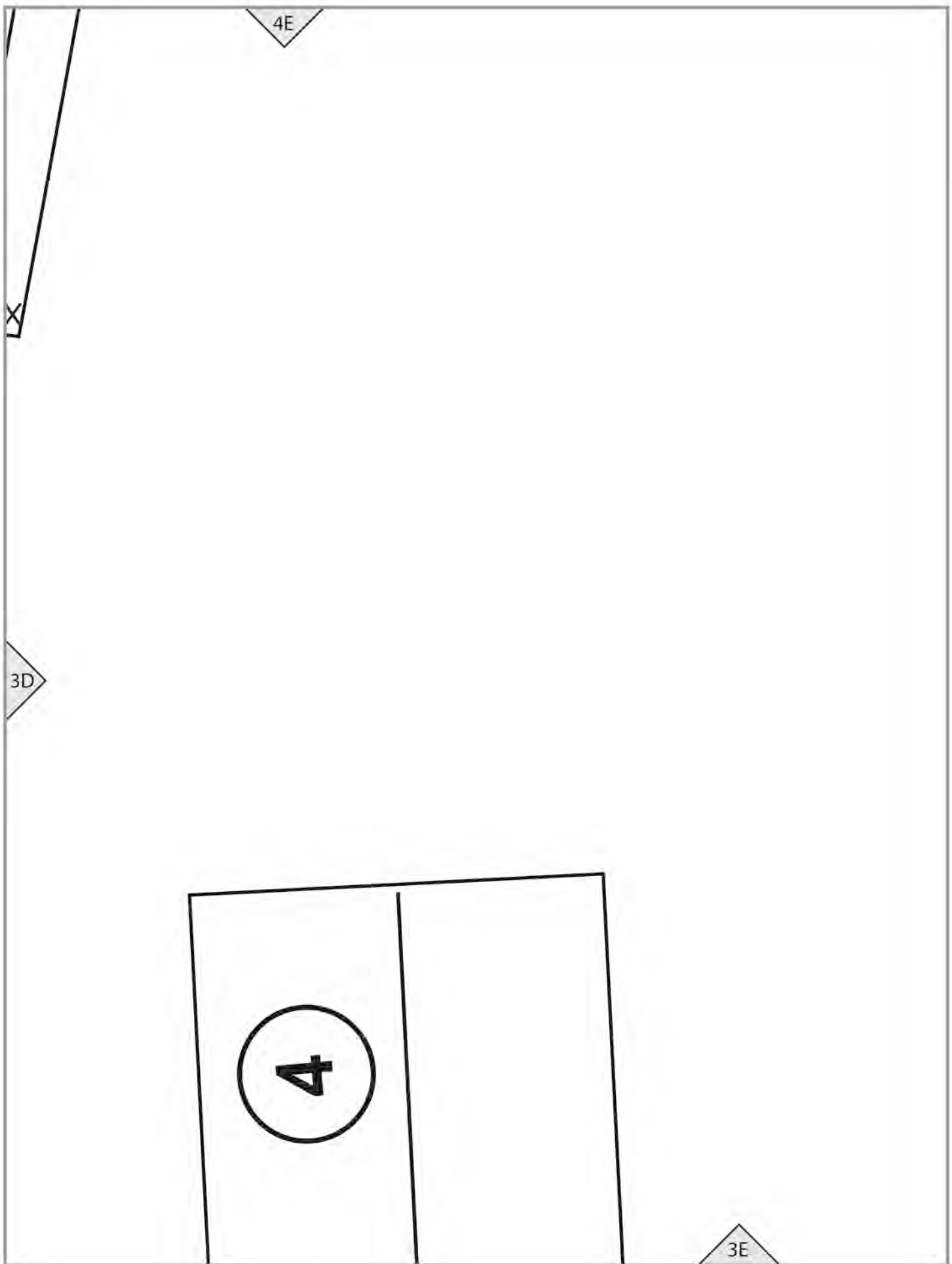
3C

# SKIRT (B)

3C









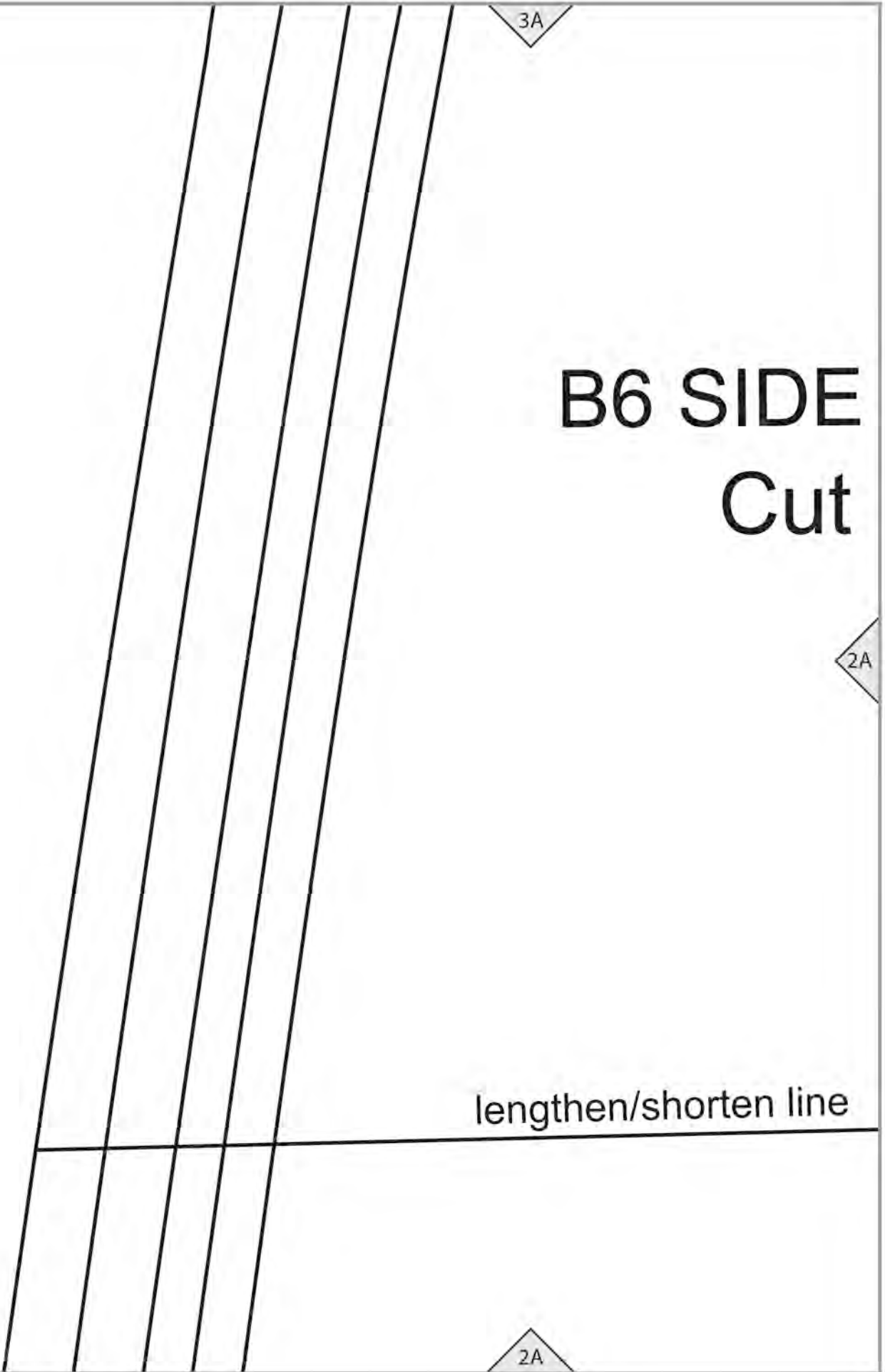
# B6 SIDE Cut

lengthen/shorten line

3A

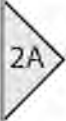
2A

2A



# FRONT

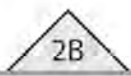
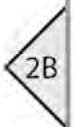
1



GRAINLINE



Place on fold of jean leg



# B6 FRONT

## Cut 1

GRAINLINE

**6**

lengthen/shorten line

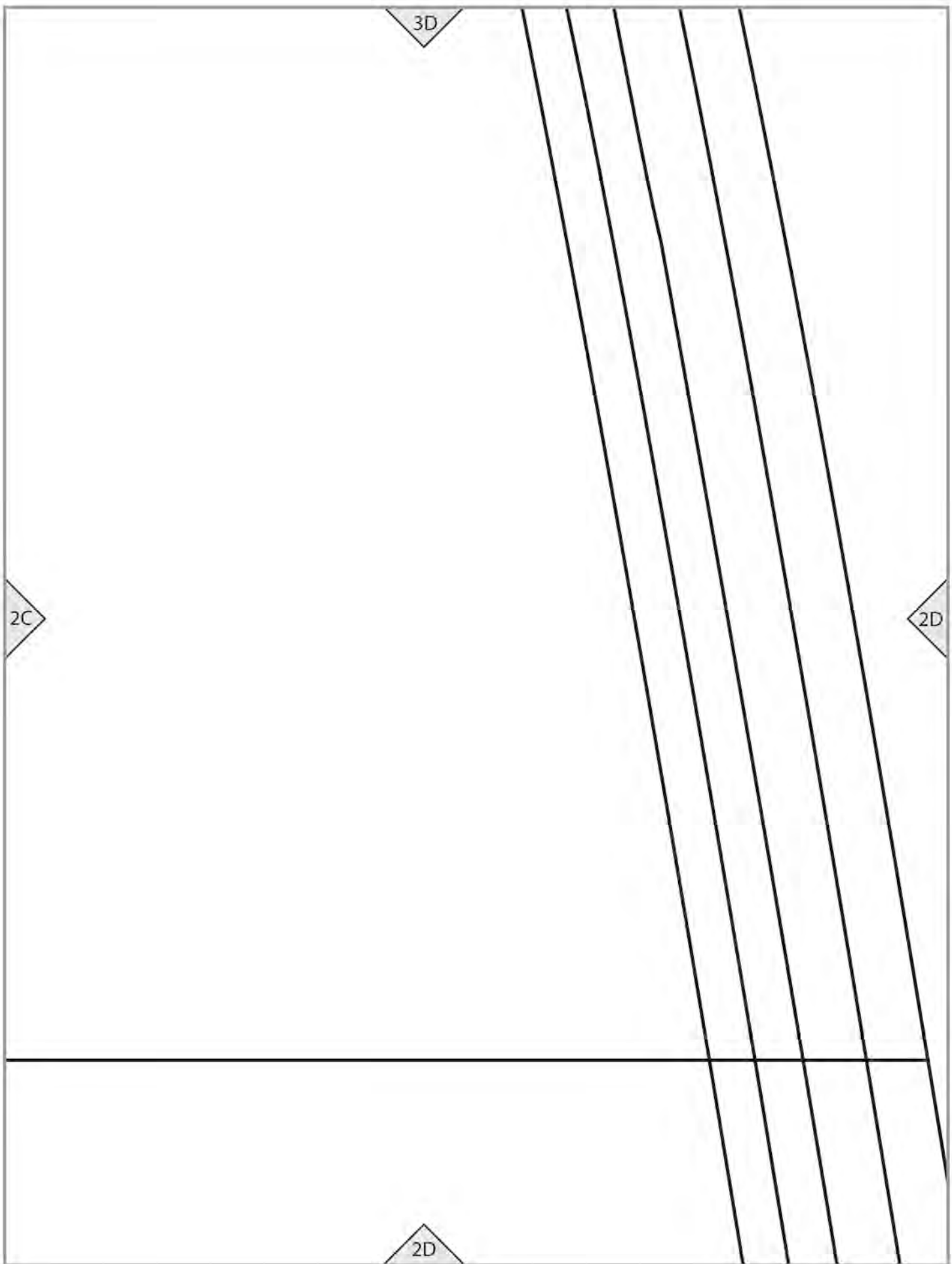
3C

2B

2C

2C





2D

2E

# AISTBAND B

## Cut 1

GRAINLINE

FOLD

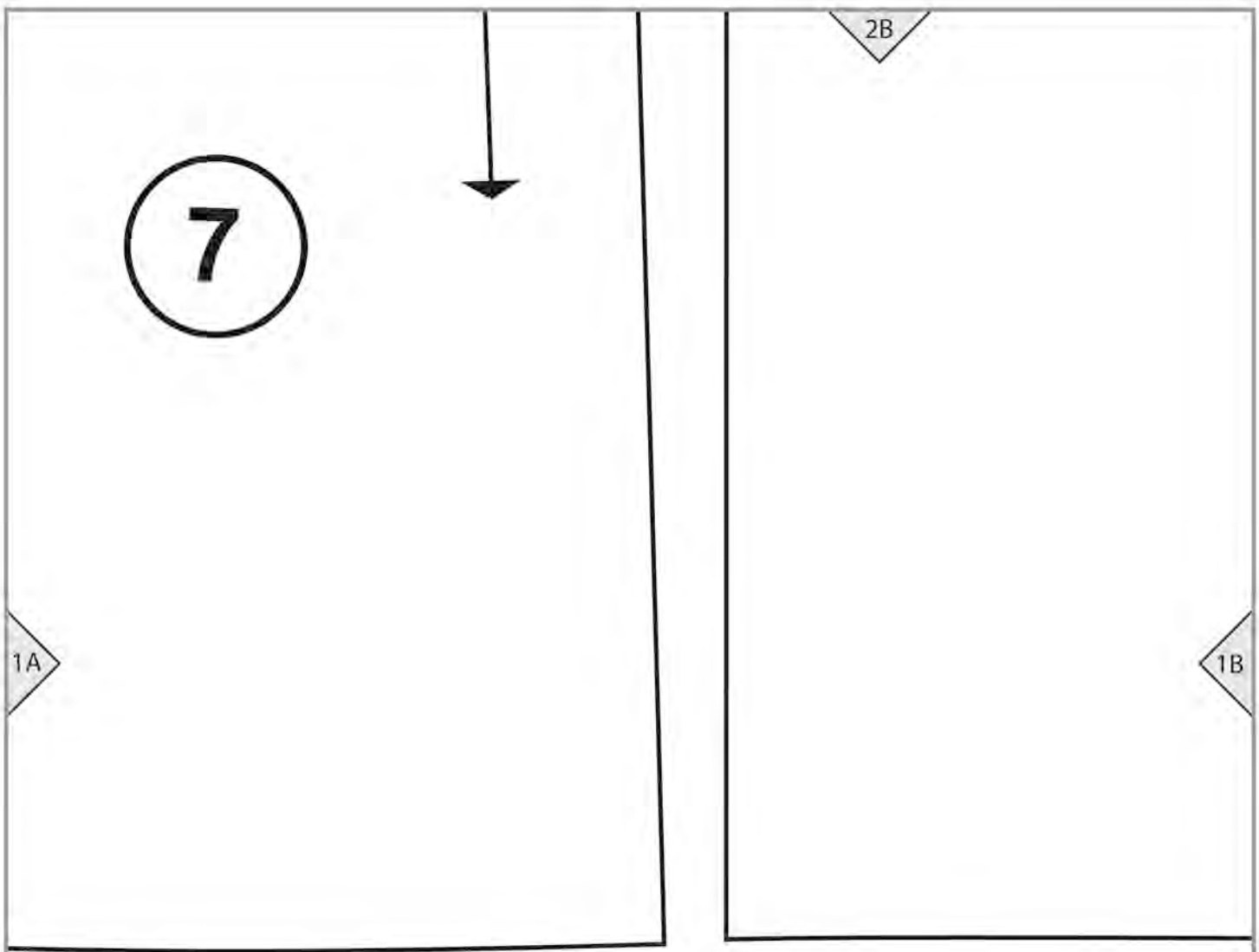
3E

2A

1A

XXL XL L M S

XXL	XL	L	M	S



2C

1B

1C

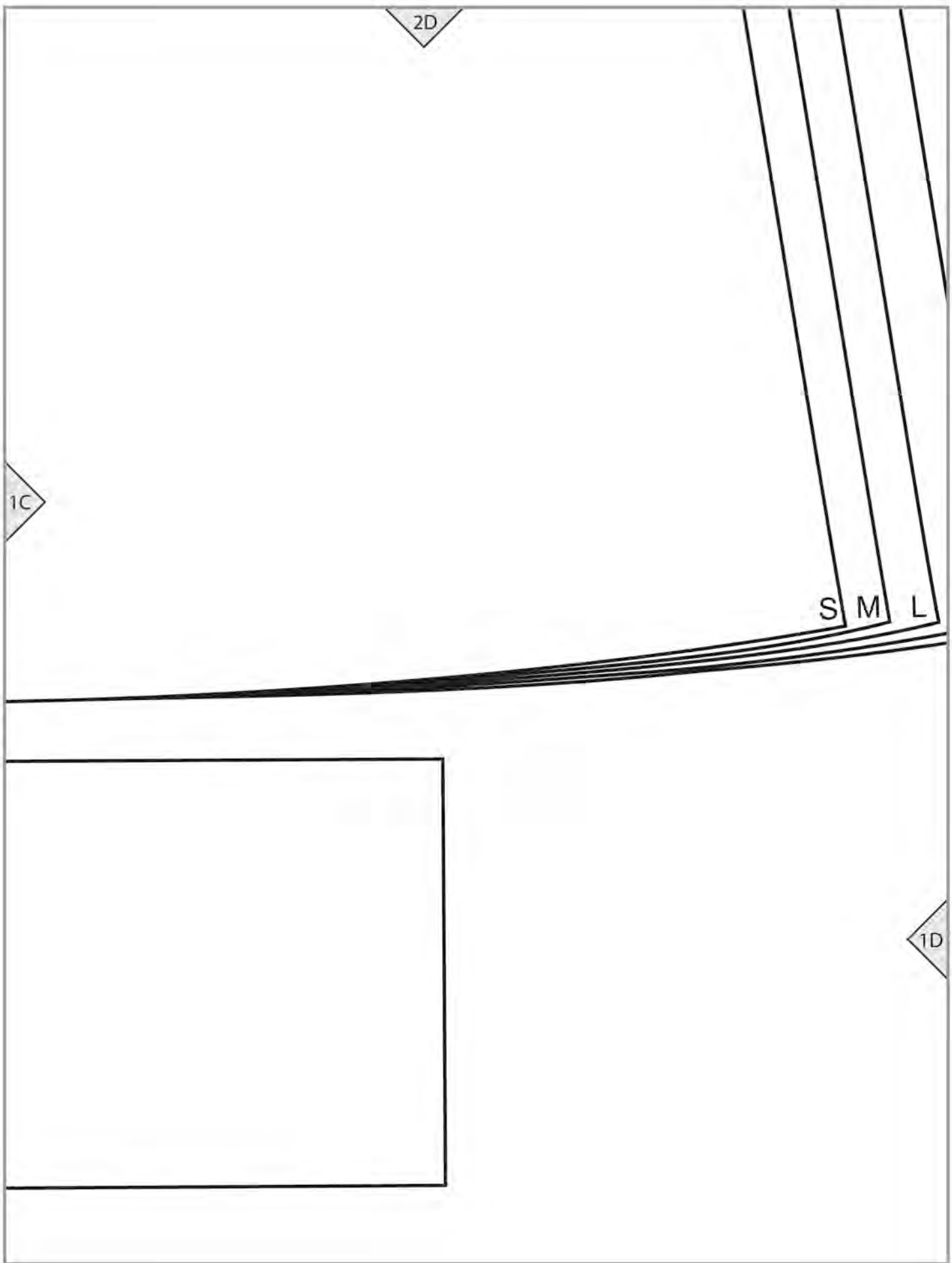
# BACK WAISTBAND

Cut 1

5







2E

XL XXL

1D

# SKIRT (B) FRONT W

NO DARTS

XXL	XL	L	M	S		