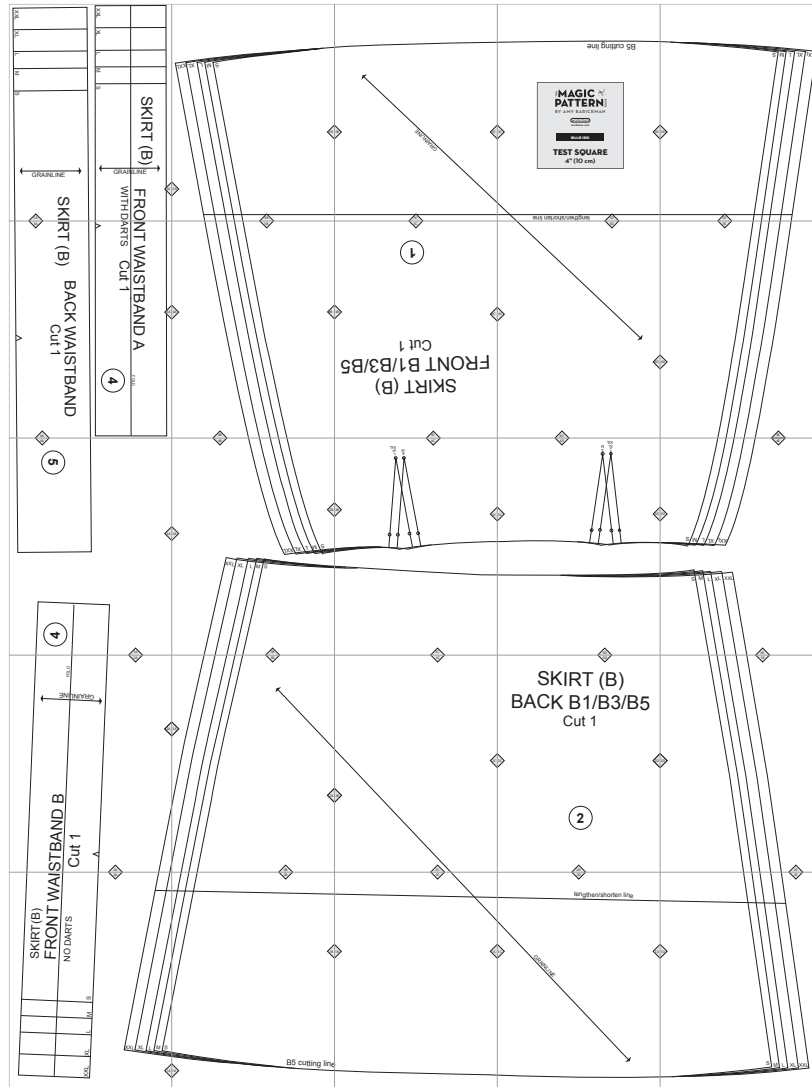


# B5. Billie




Copyright ©2014 by Amy Barickman


All rights reserved. Amy Barickman's patterns may be printed for personal use, but may not be otherwise reproduced—mechanically, electronically, or by any other means, including photocopying—without written permission of the publisher.

Sewing pattern designs for *The Magic Pattern Book* by Amy Barickman are intended for personal use only, and not as the basis for commercial manufacturing.

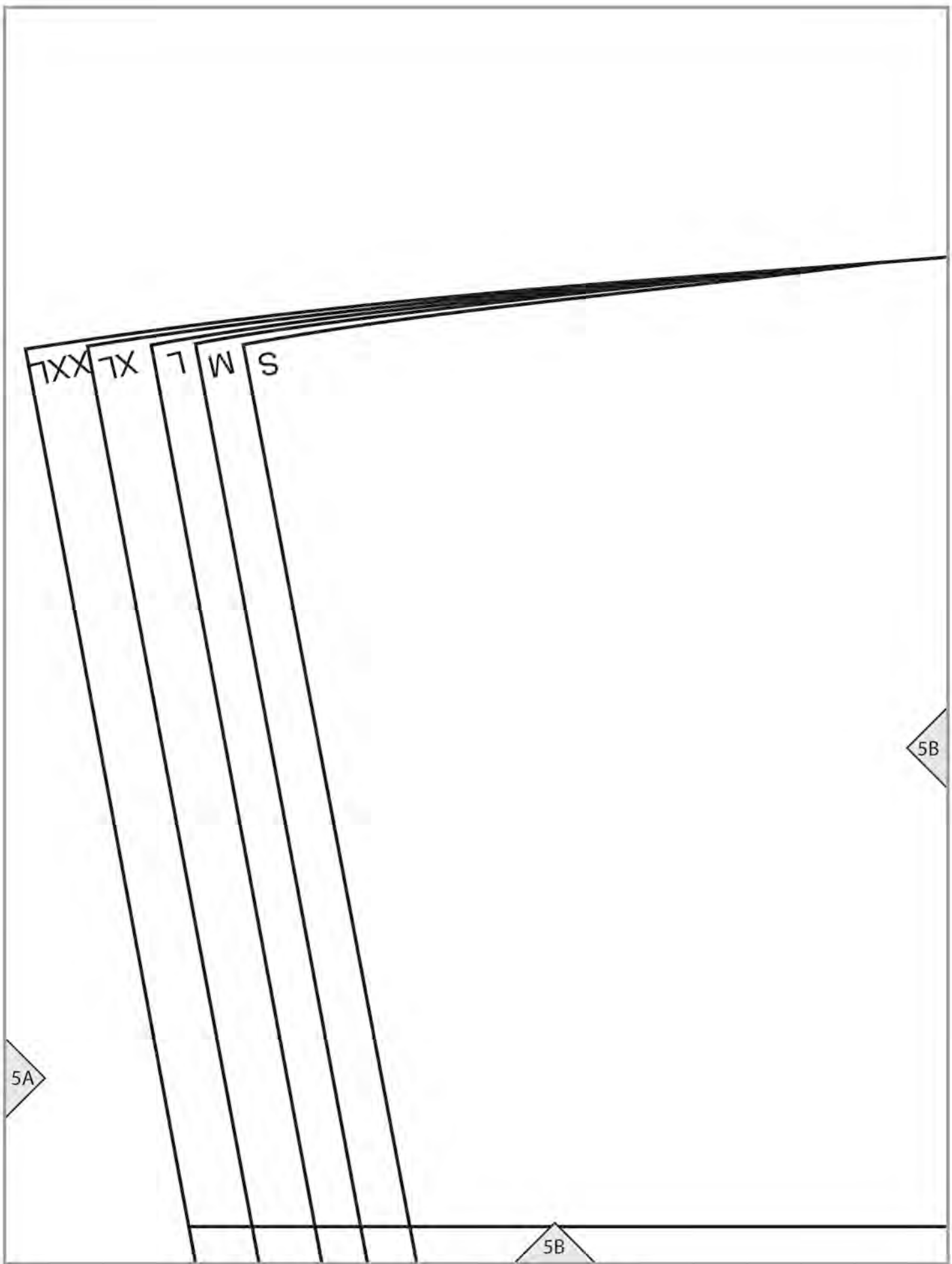
Workman Publishing, New York • [workman.com](http://workman.com)

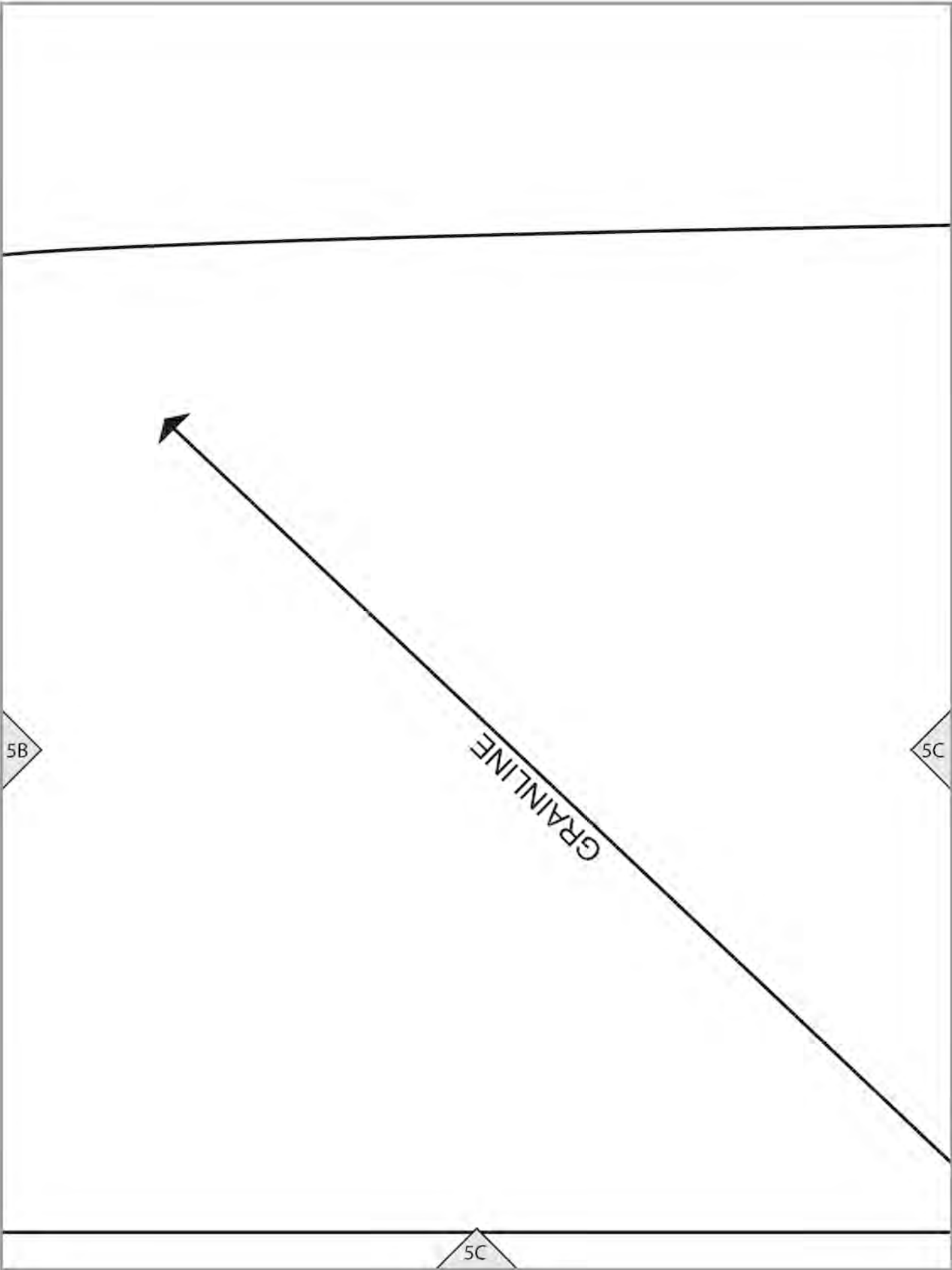
XXL					
XL					
L					
M					
S	<b>SKIRT (B)</b>				
					
<b>FRO</b>					
<b>WITH D</b>					

5A

XXL				
XL				
L				
M				
S	<b>SKI</b>			
				

5A





B5 cutting line

**THE MAGIC** ✂️  
**PATTERN** BOOK  
BY AMY BARICKMAN

workman  
workman.com

**BILLIE (B5)**

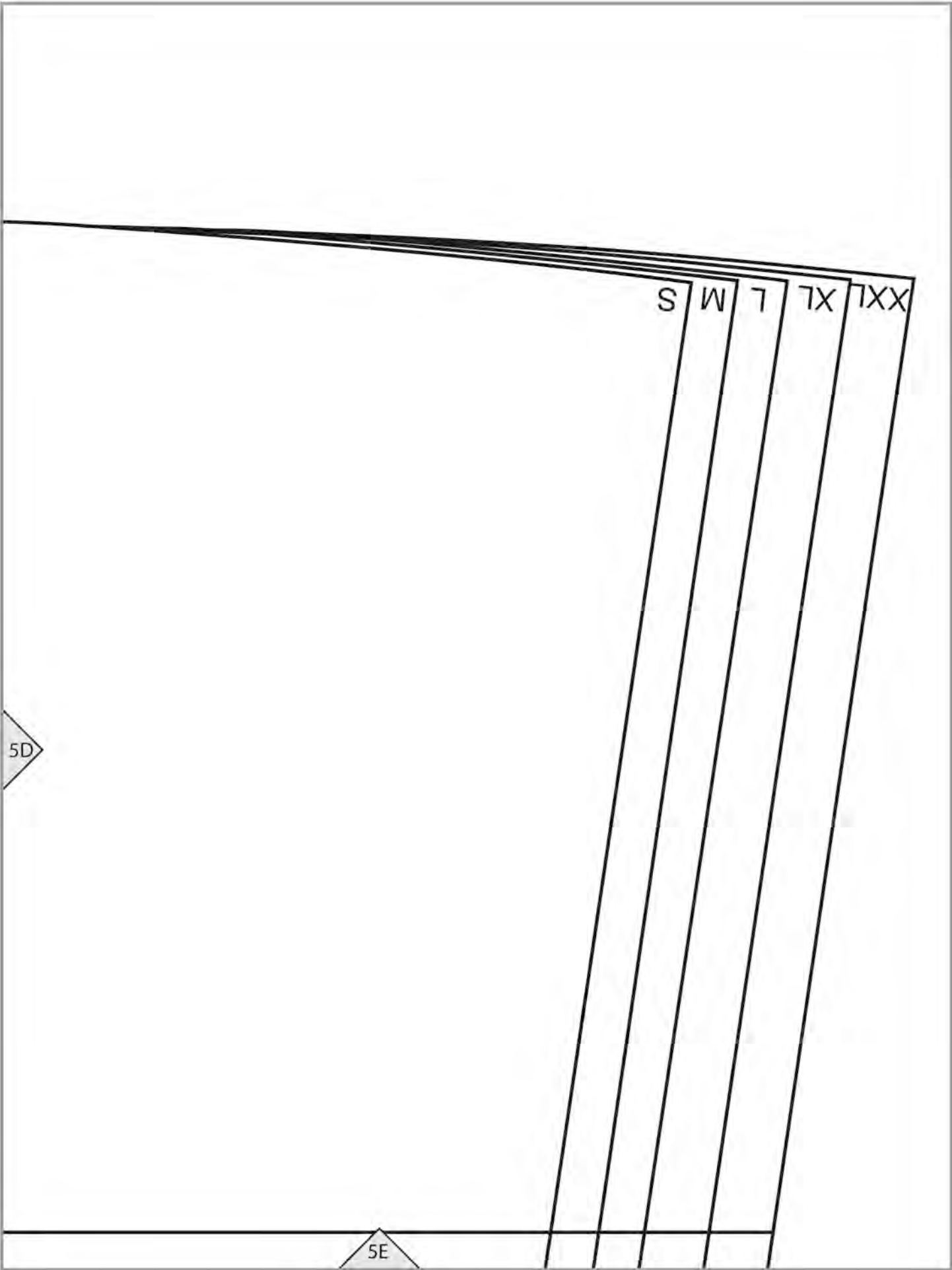
**TEST SQUARE**  
4" (10 cm)

5C

5D

lengthen/shorten line

5D



4A

# NT WAISTBAND A

FOLD

ARTS Cut 1



# RT (B)

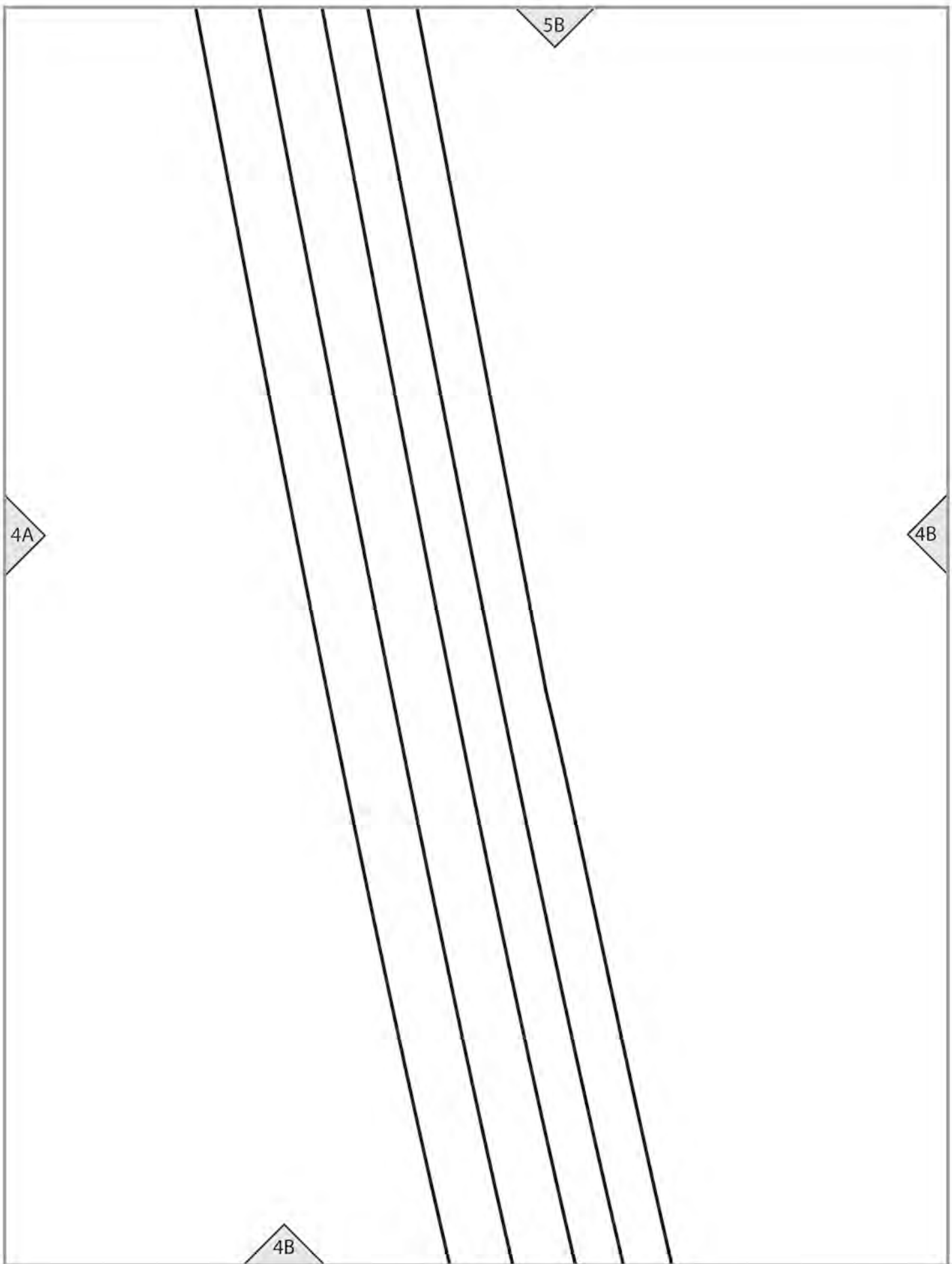
# BACK WAISTBAND

Cut 1

5A

4A







5C



4B

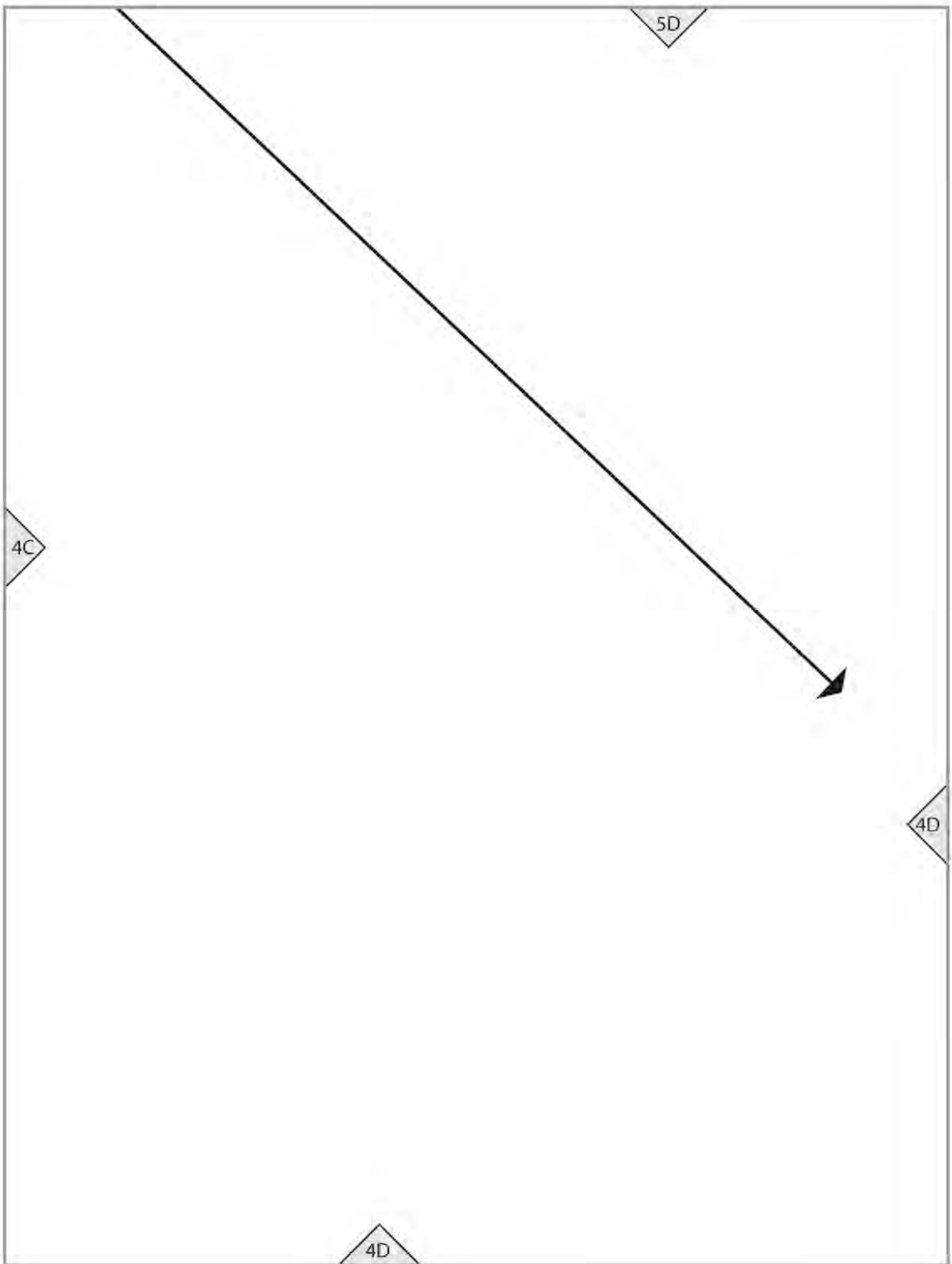
4C

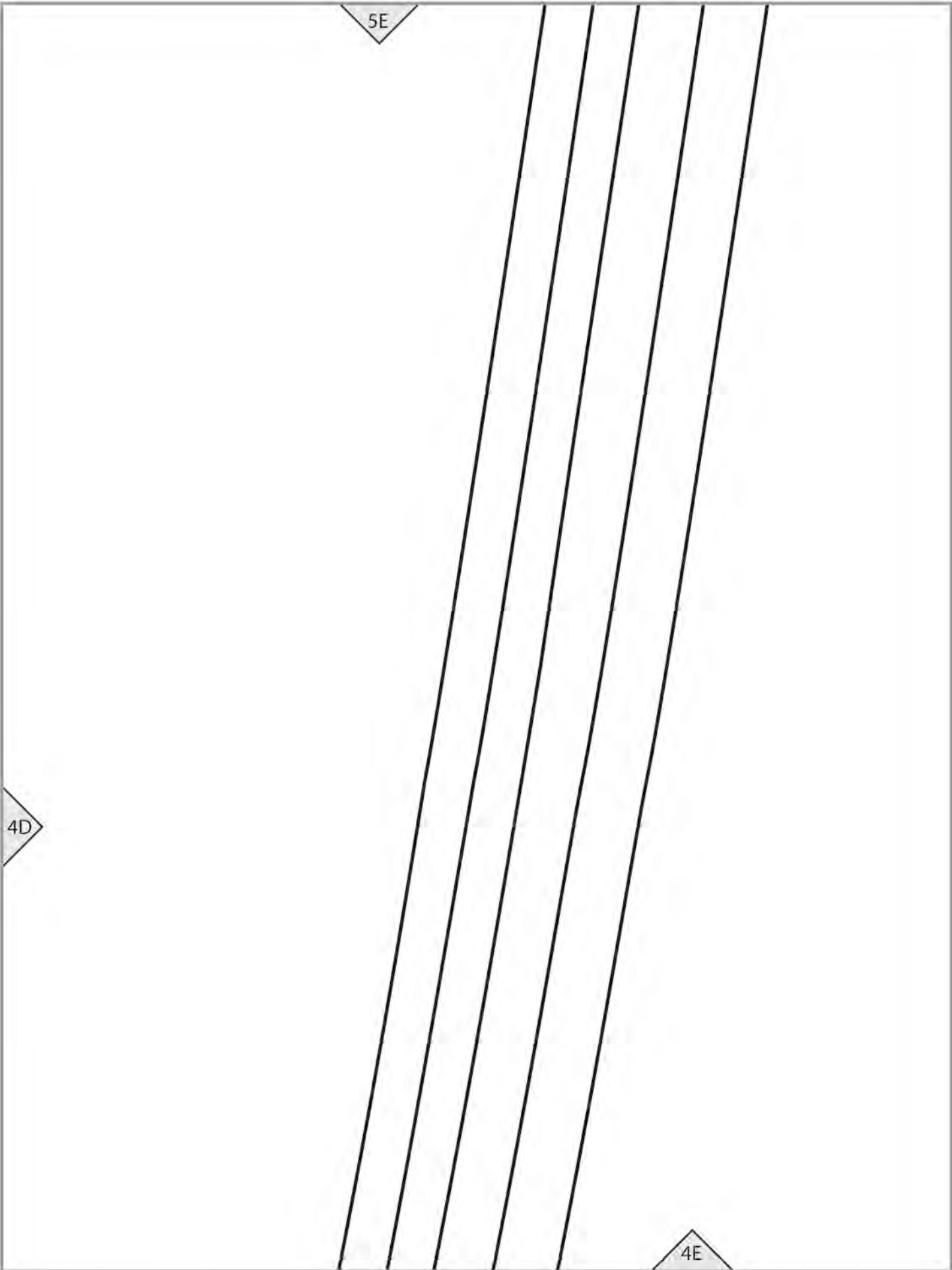
Cut 1

**FRONT B1/B3/B5**

**SKIRT (B)**

4C





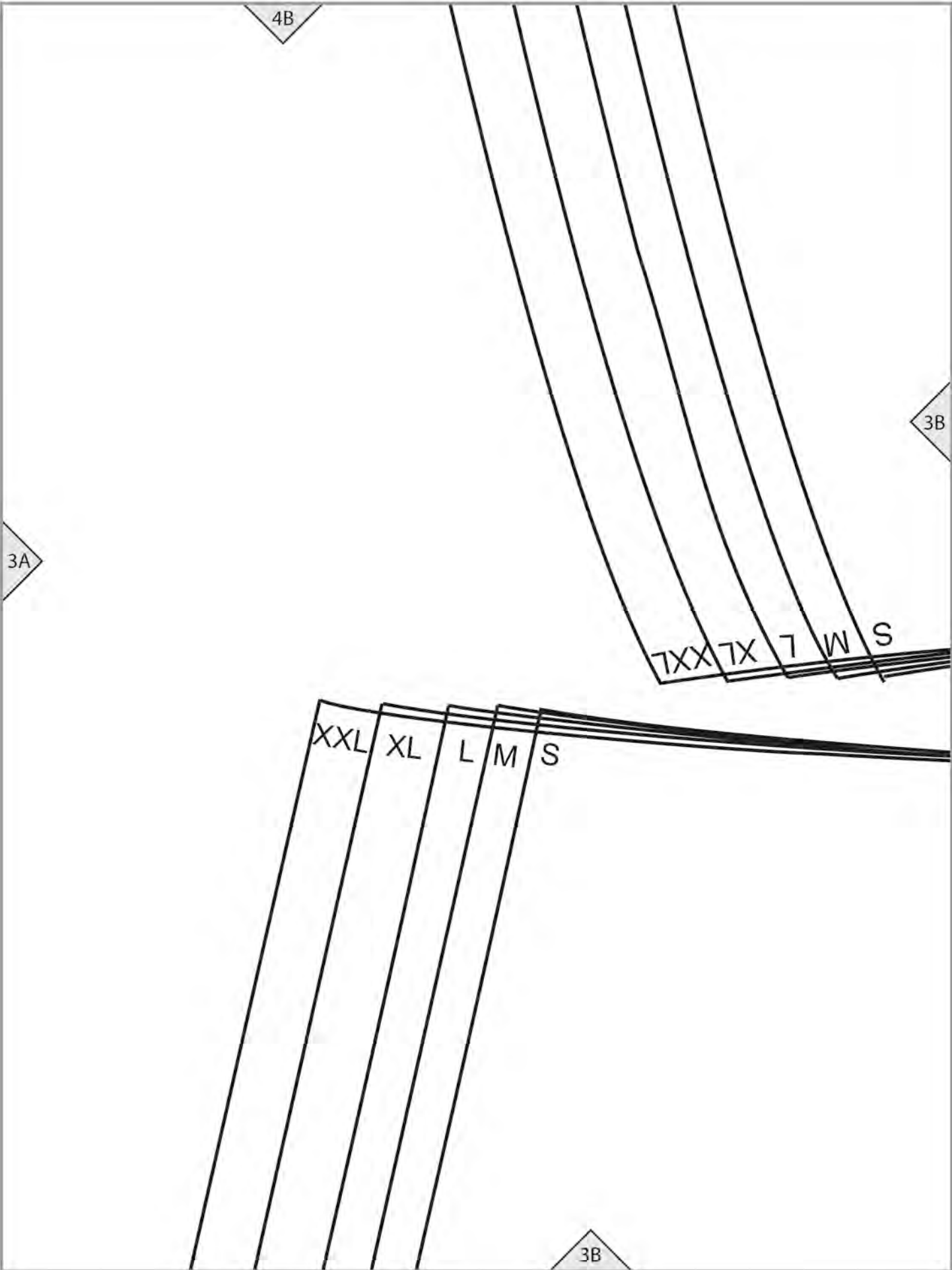
4A

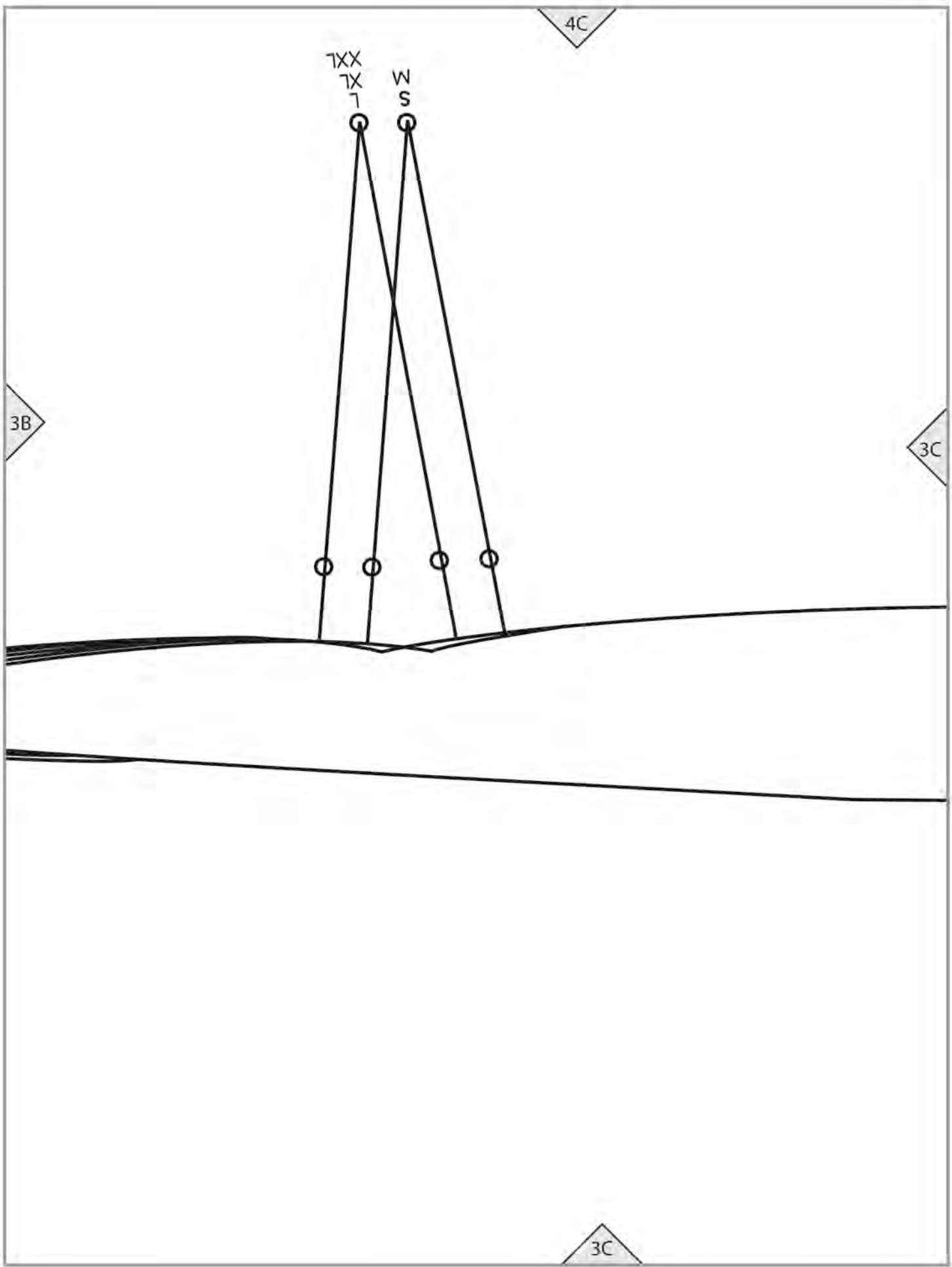
5

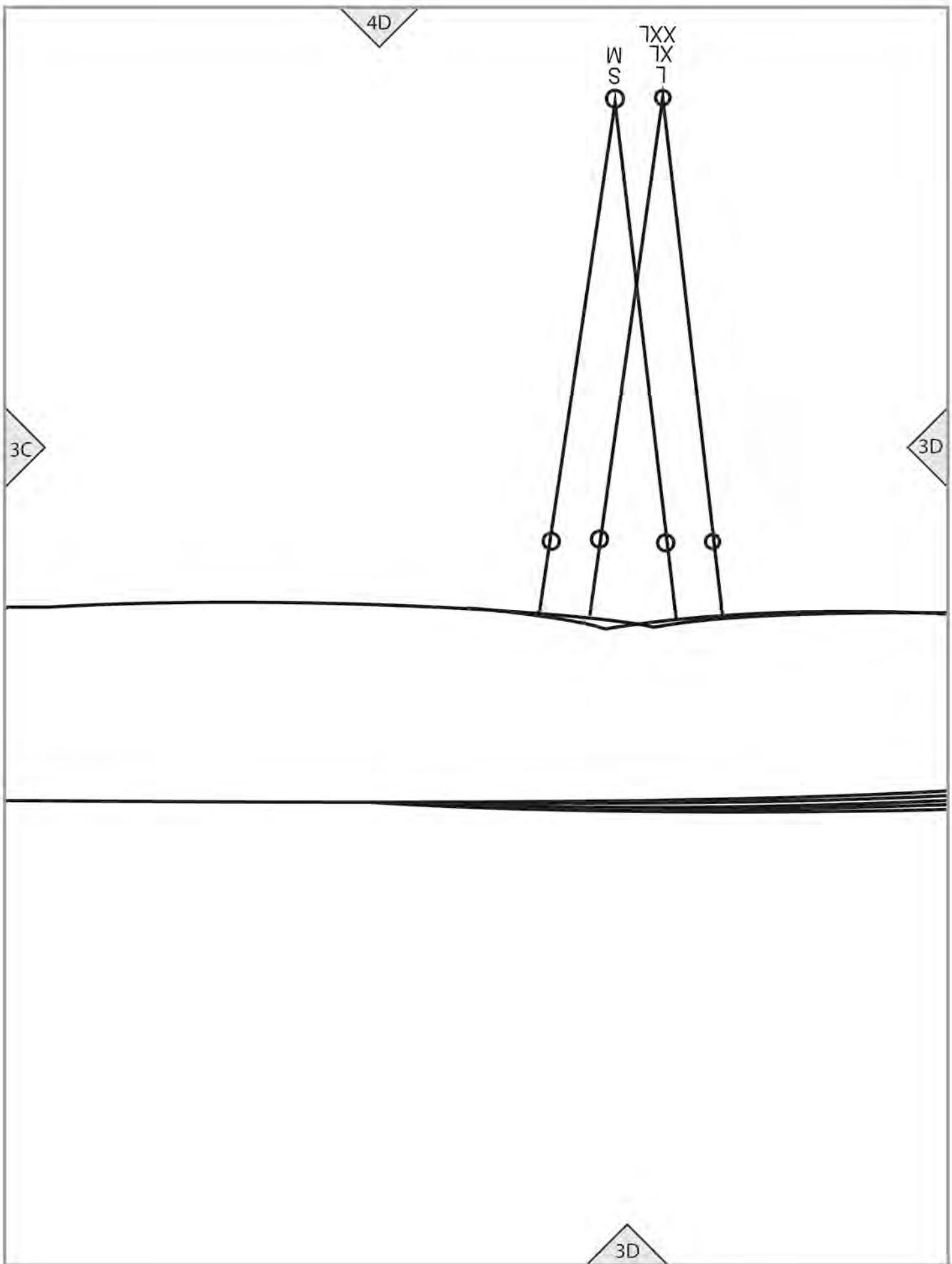
3A

4

3A







4E

3D

S W 1 1X 1XX

S M L XL XXL

3E



**STBAND B**

**Cut 1**

FOLD

GRAINLINE

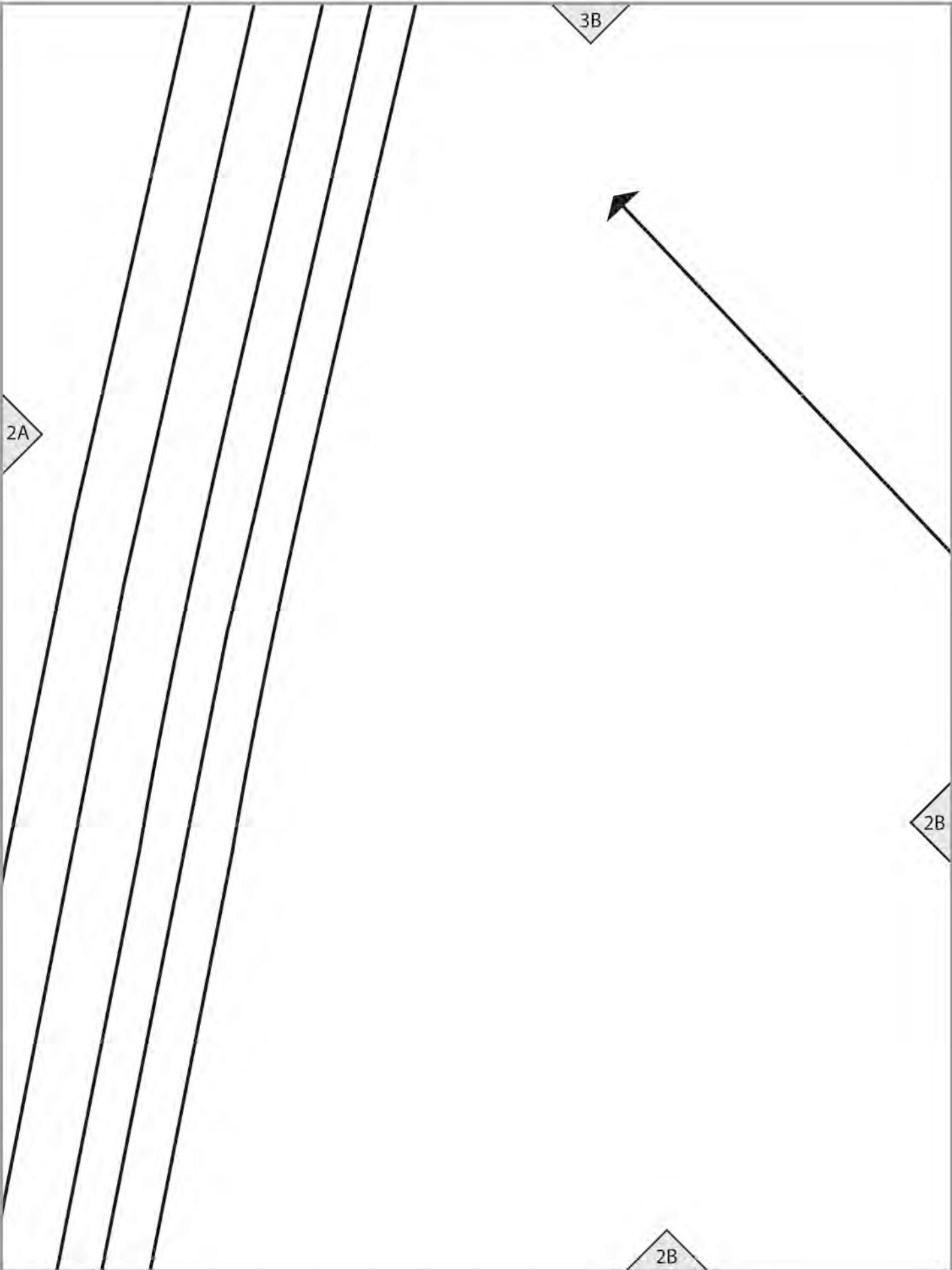


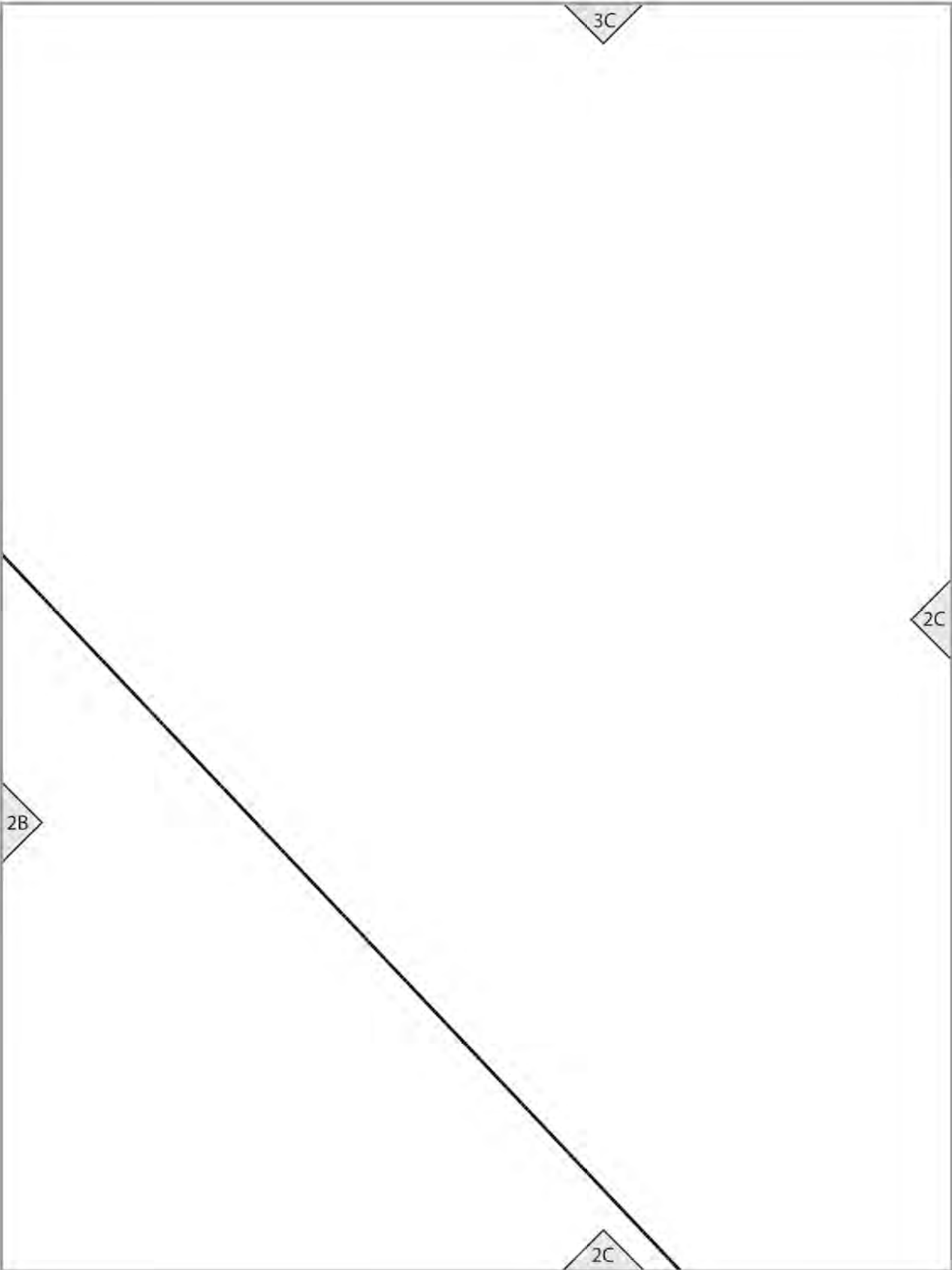
3A

2A

2A







3D

# SKIRT (B)

## BACK B1/B3/B5

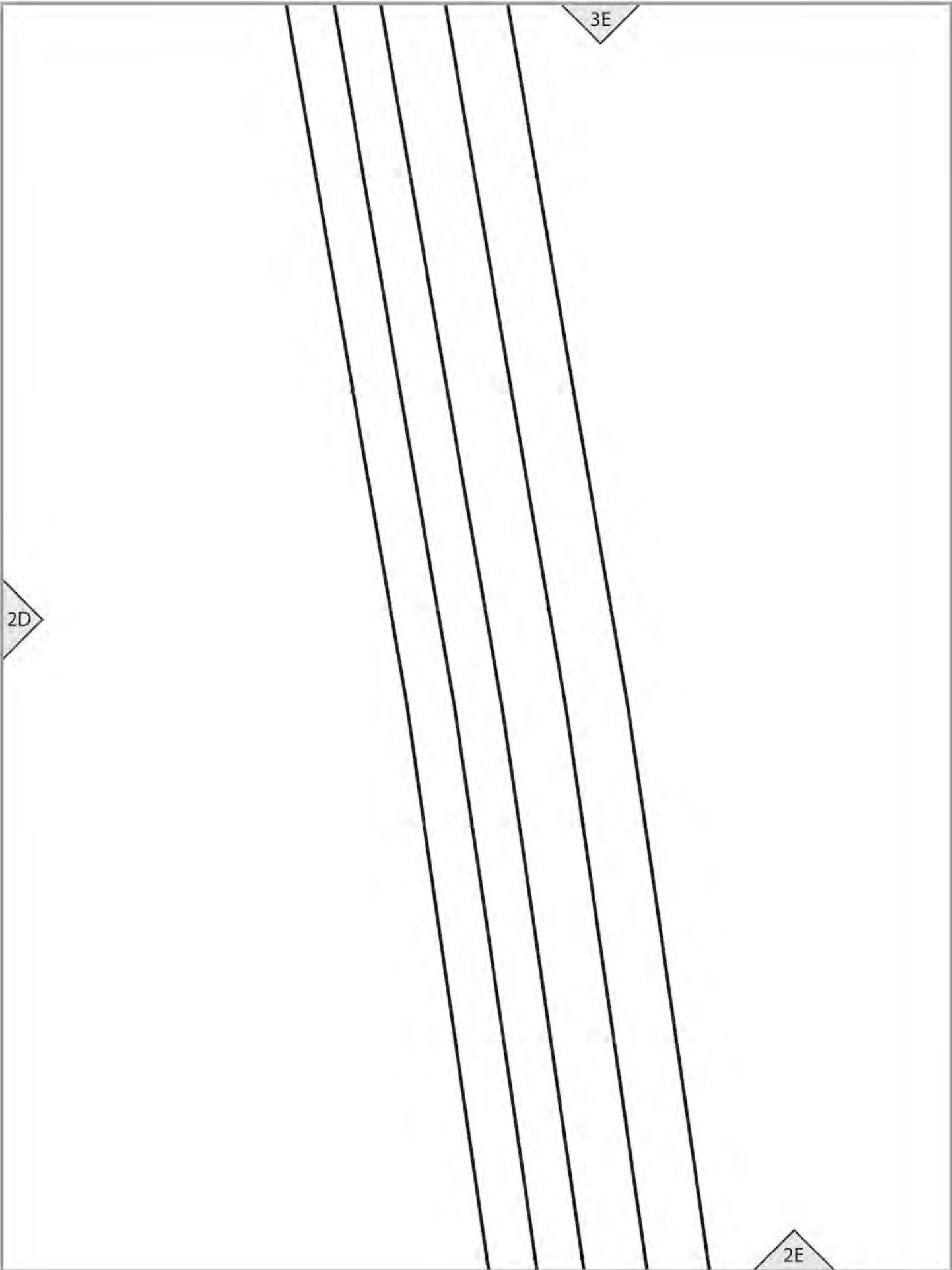
### Cut 1

2C

2D

2

2D



# SKIRT(B) FRONT WAI

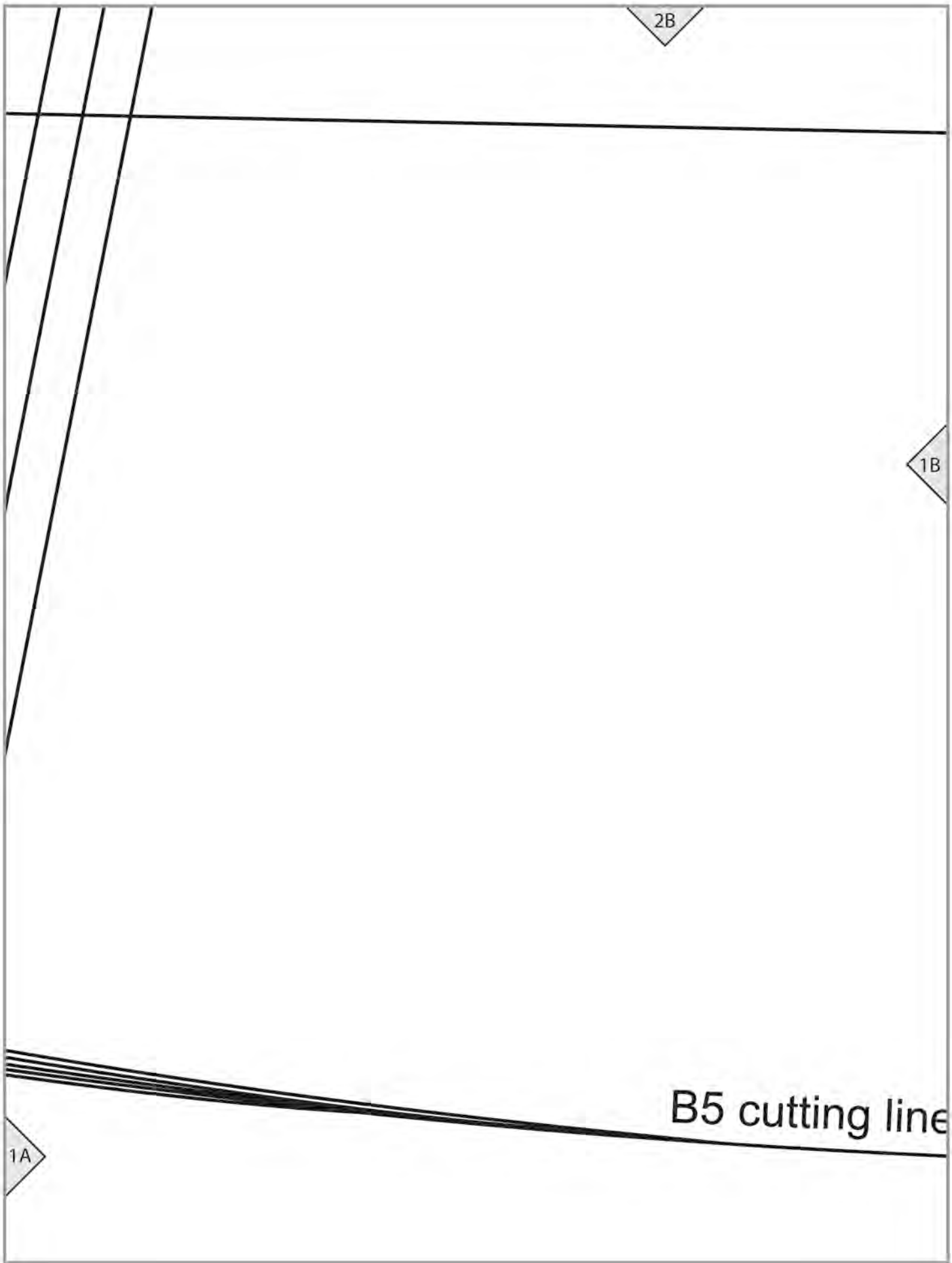
NO DARTS

XXL	XL	L	M	S

2A

XXL XL L M S

1A

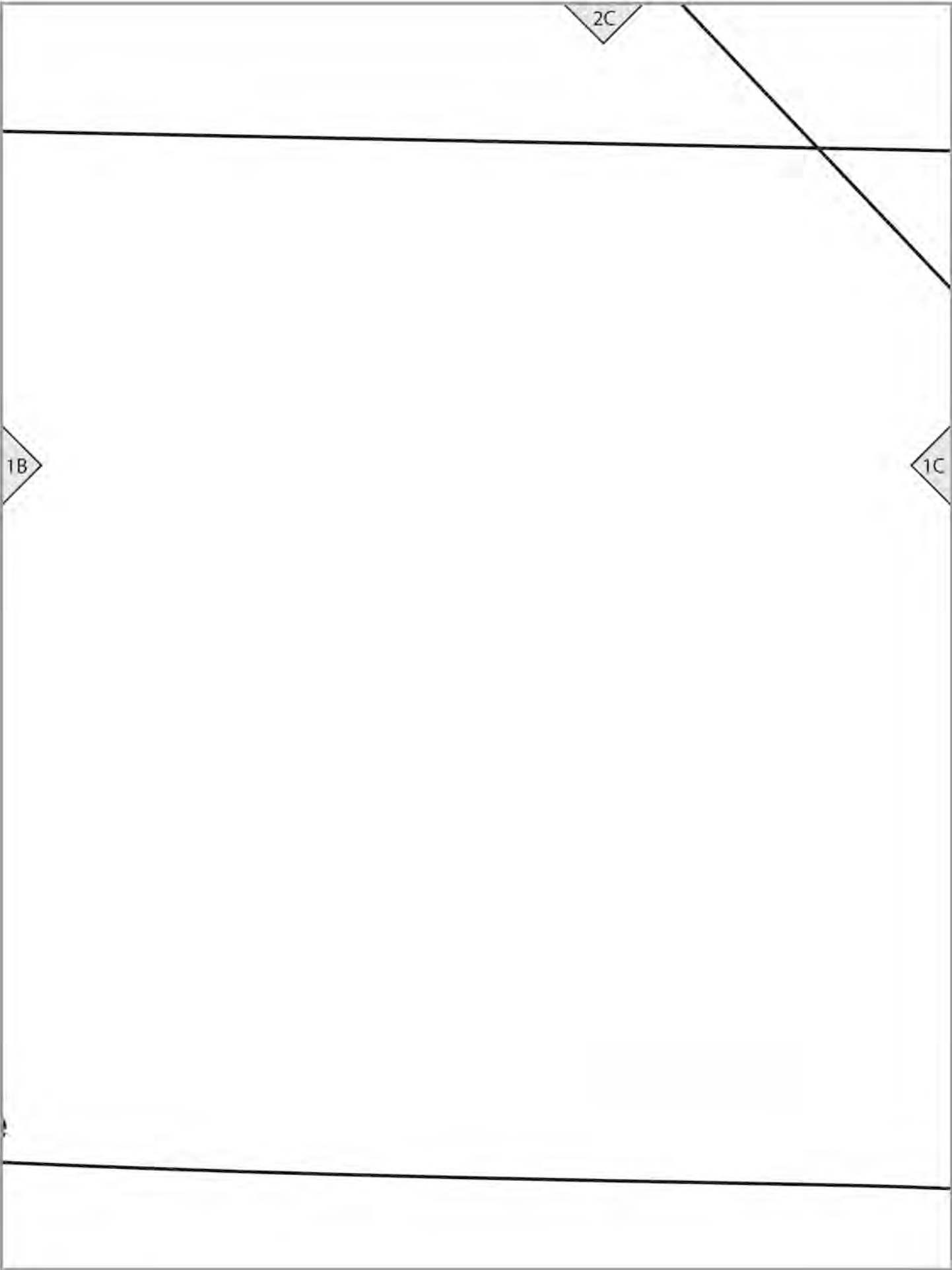


2B

1B

B5 cutting line

1A





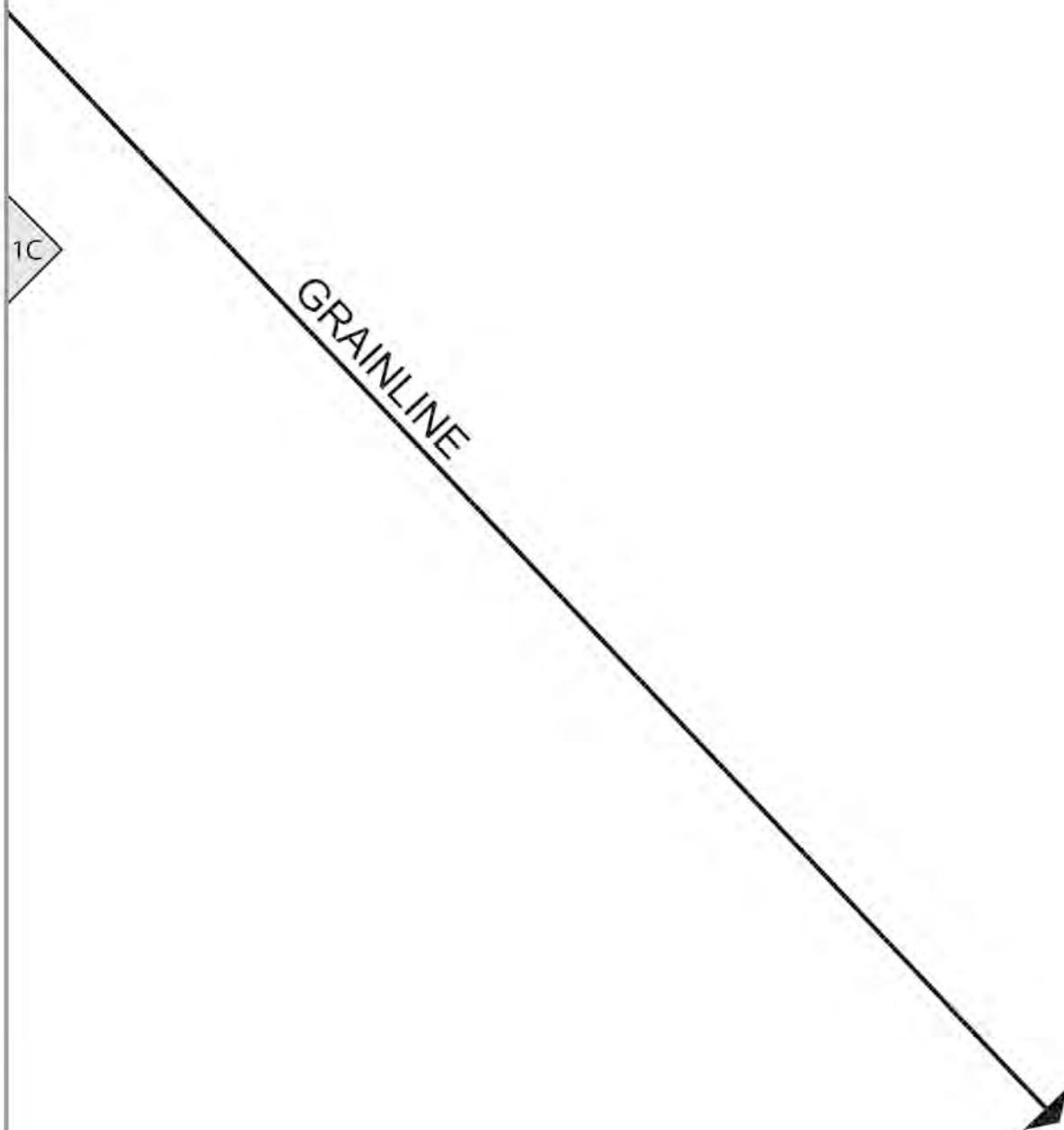
2D

lengthen/shorten line

1C

GRAINLINE

1D



1D

2E

S M L XL XXL

