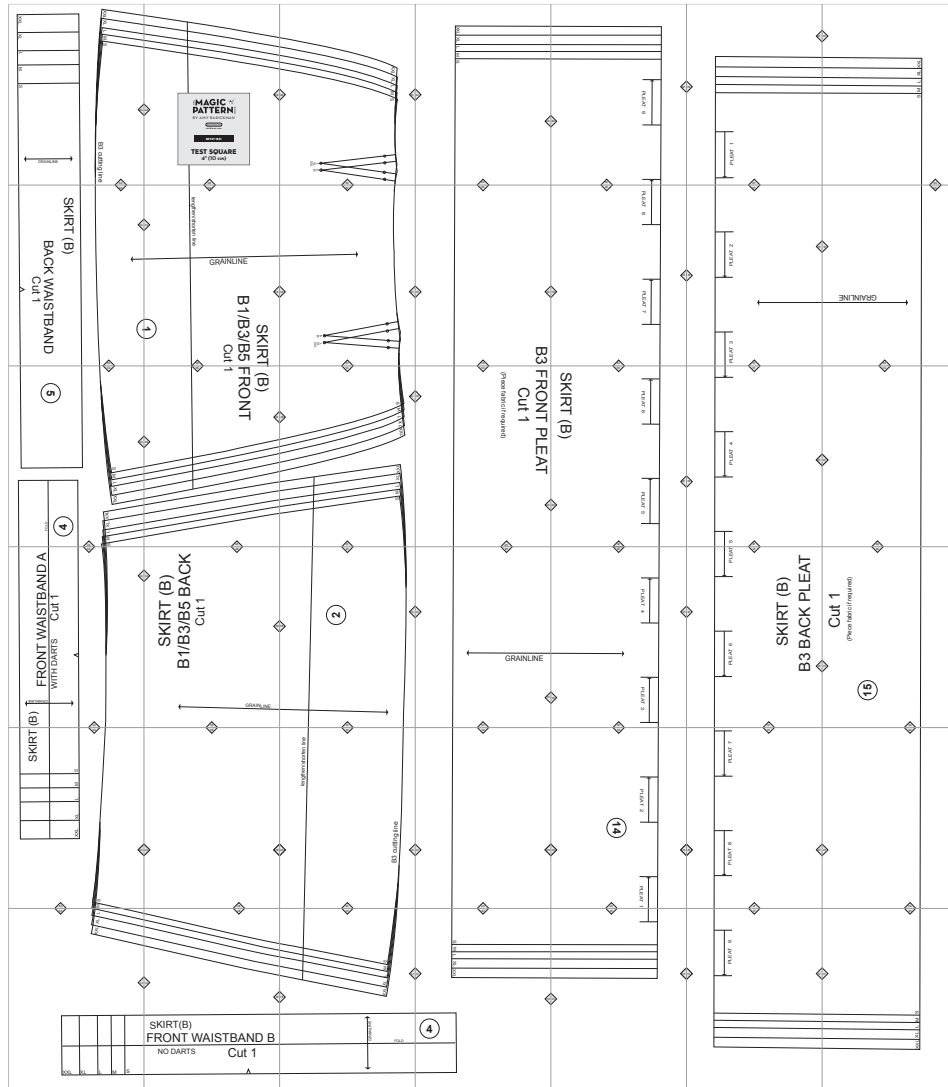


B3. Betsy

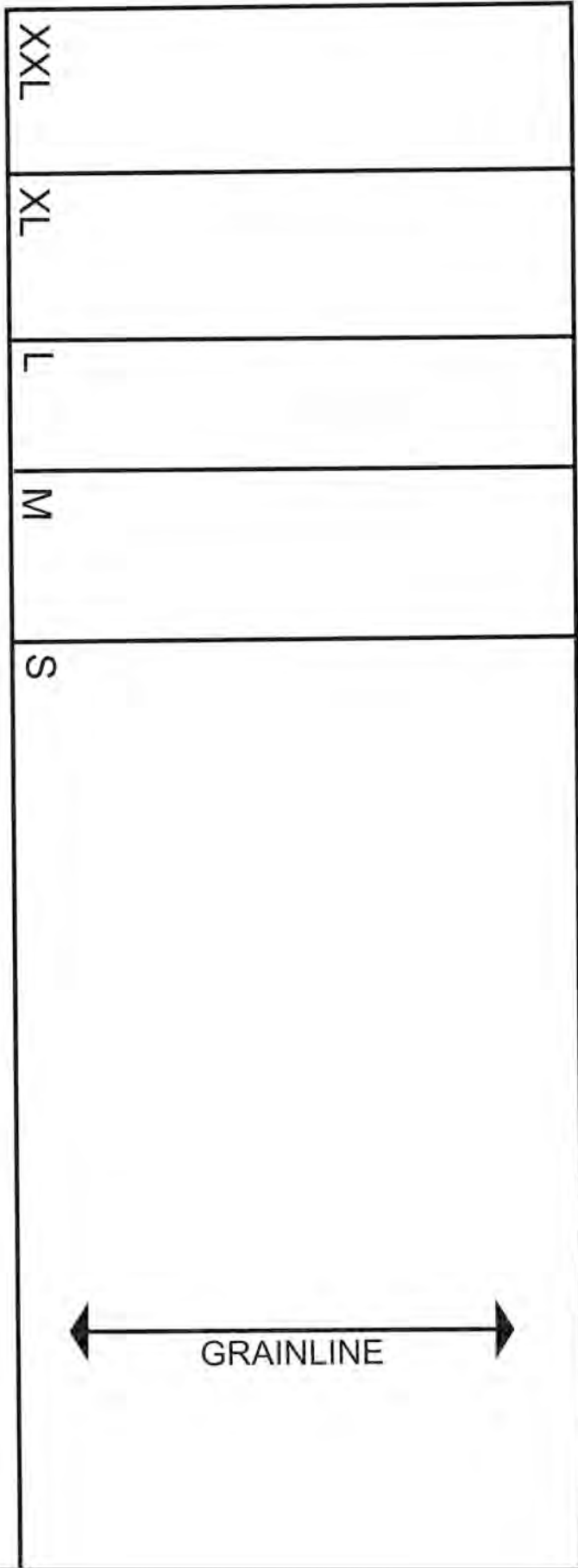


Copyright ©2014 by Amy Barickman

All rights reserved. Amy Barickman's patterns may be printed for personal use, but may not be otherwise reproduced—mechanically, electronically, or by any other means, including photocopying—without written permission of the publisher.

Sewing pattern designs for *The Magic Pattern Book* by Amy Barickman are intended for personal use only, and not as the basis for commercial manufacturing.

Workman Publishing, New York • workman.com



6A

6B

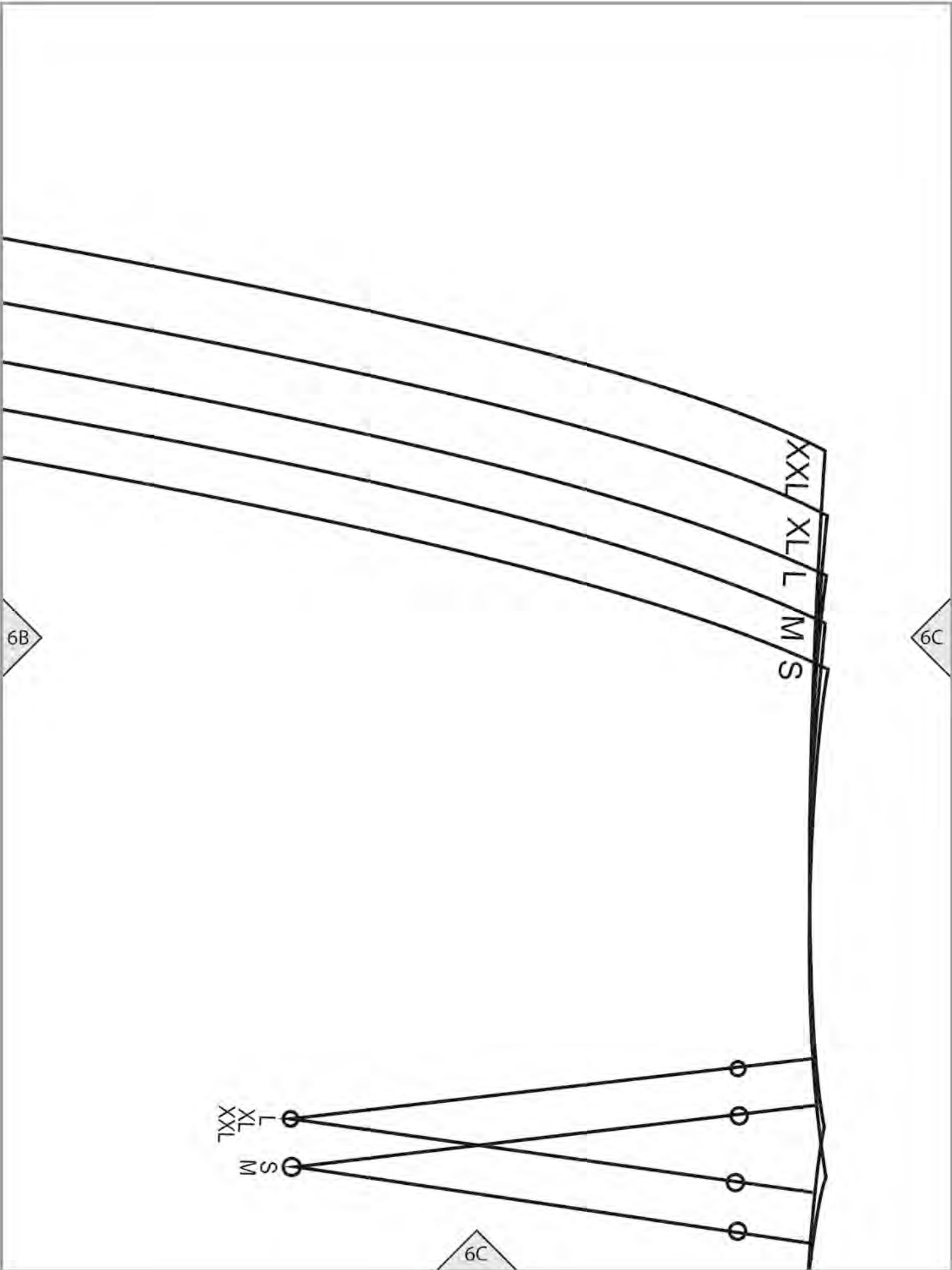
THE MAGIC ✂️
PATTERN BOOK
BY AMY BARICKMAN

workman
workman.com

BETSY (B3)

TEST SQUARE
4" (10 cm)

6B

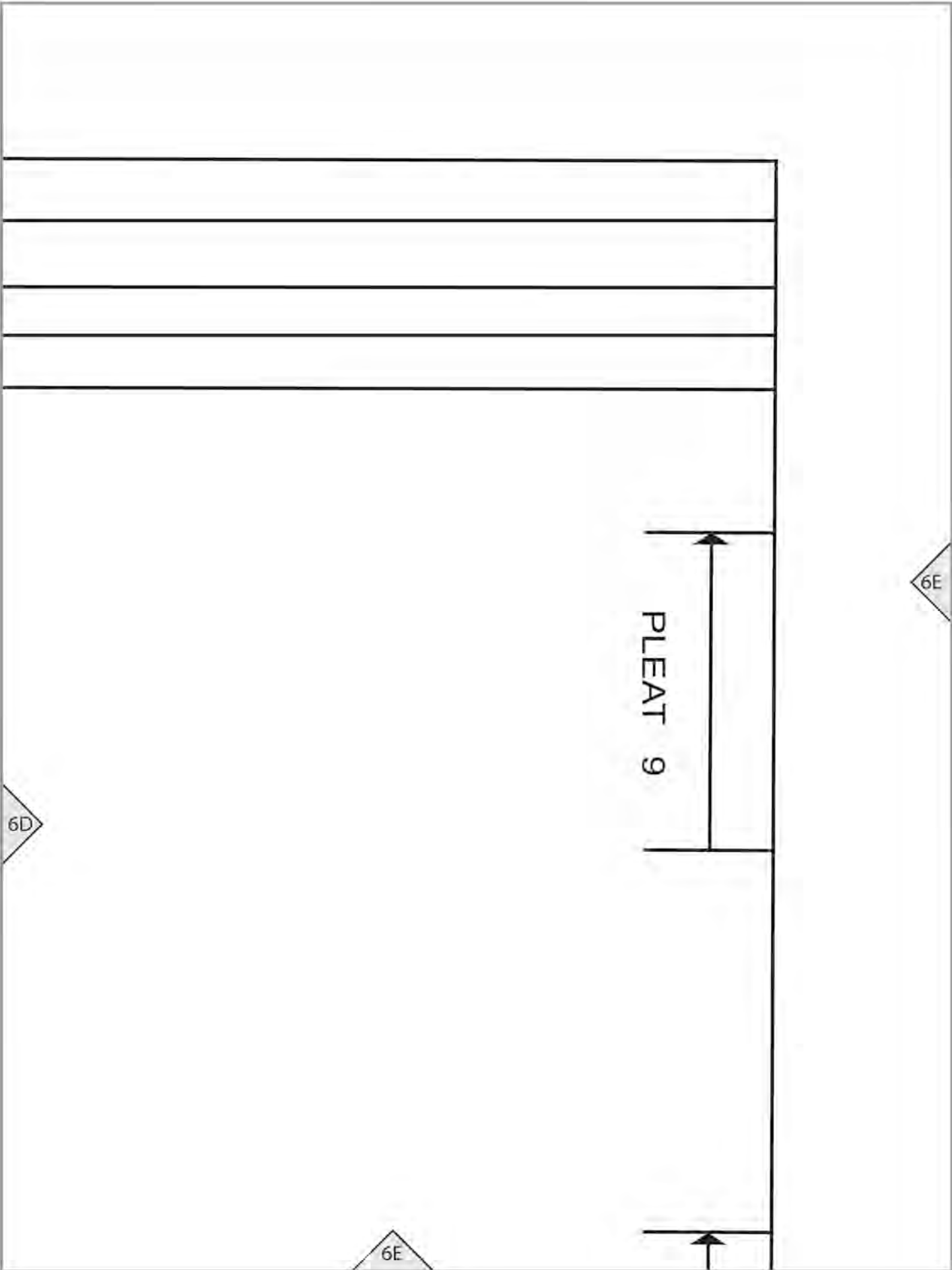


6C

XXL
XL
L
M
S

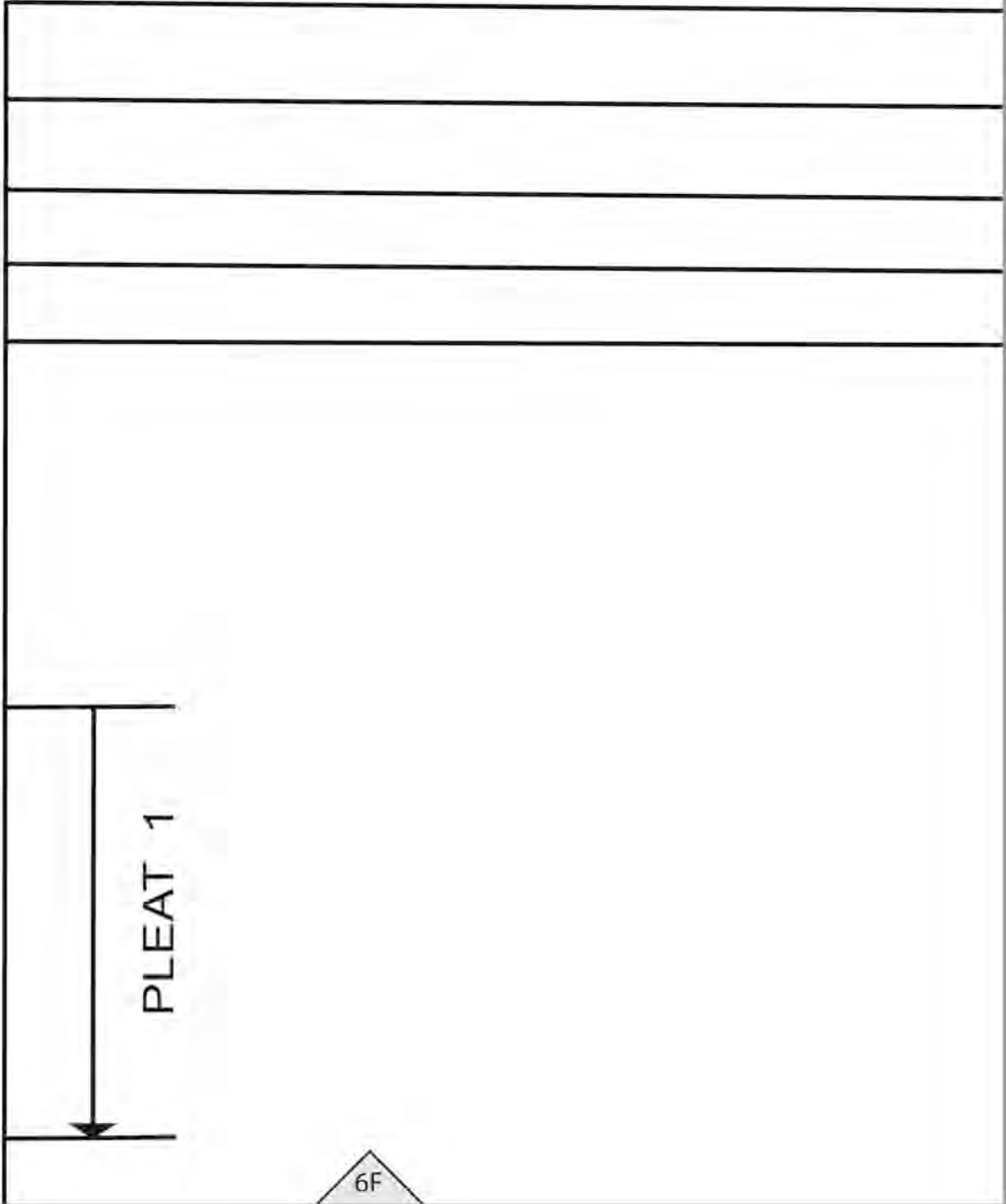
6D

6D



6E

6F



6F

6F

S
M
L
XL
XXL

6G

5A



6A



5A

SKIRT (B)

BACK WAISTBAND

Cut 1



6B

lengthen/shorten line

5A

GRAINLINE

5B

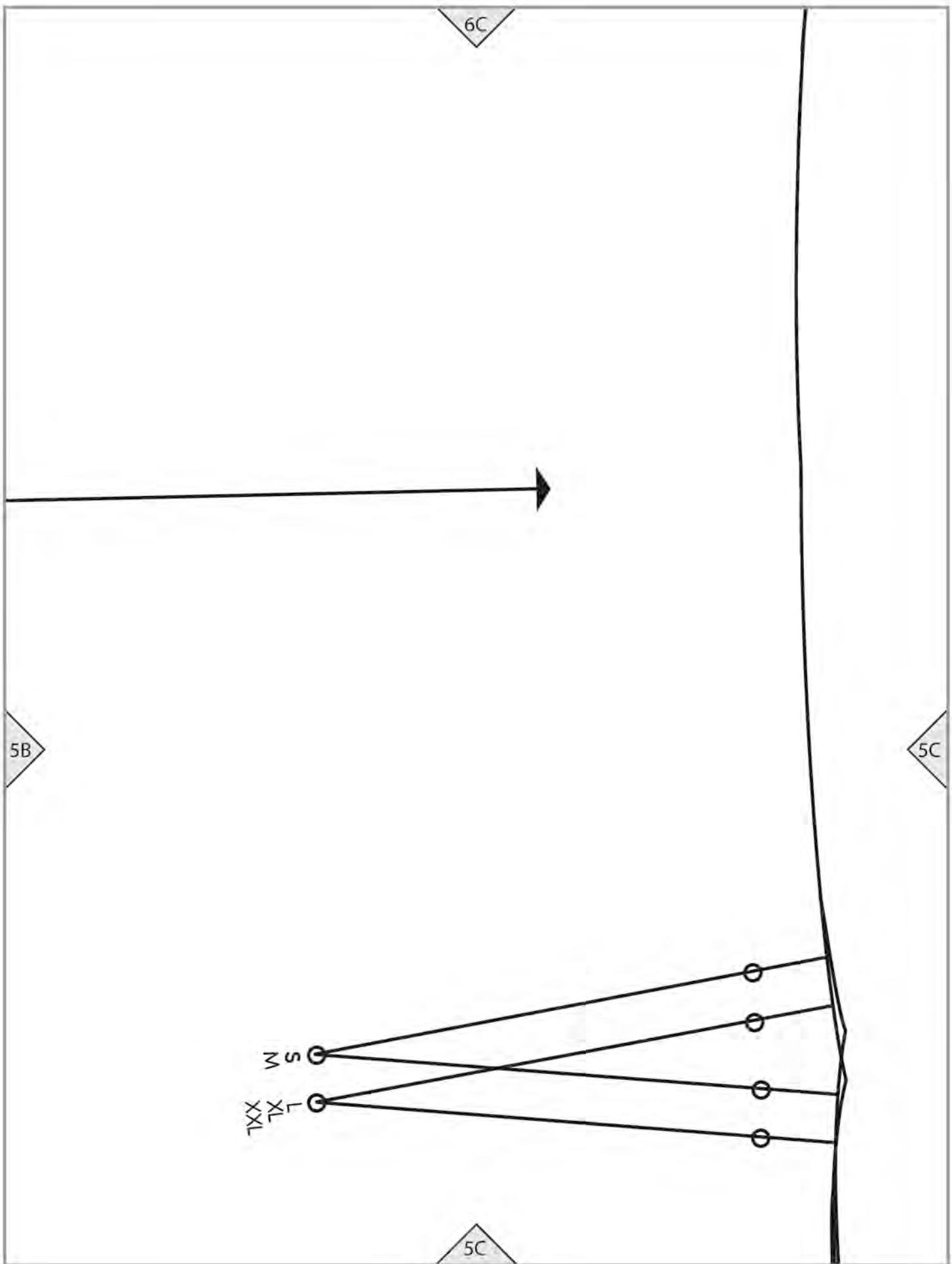
SKIRT

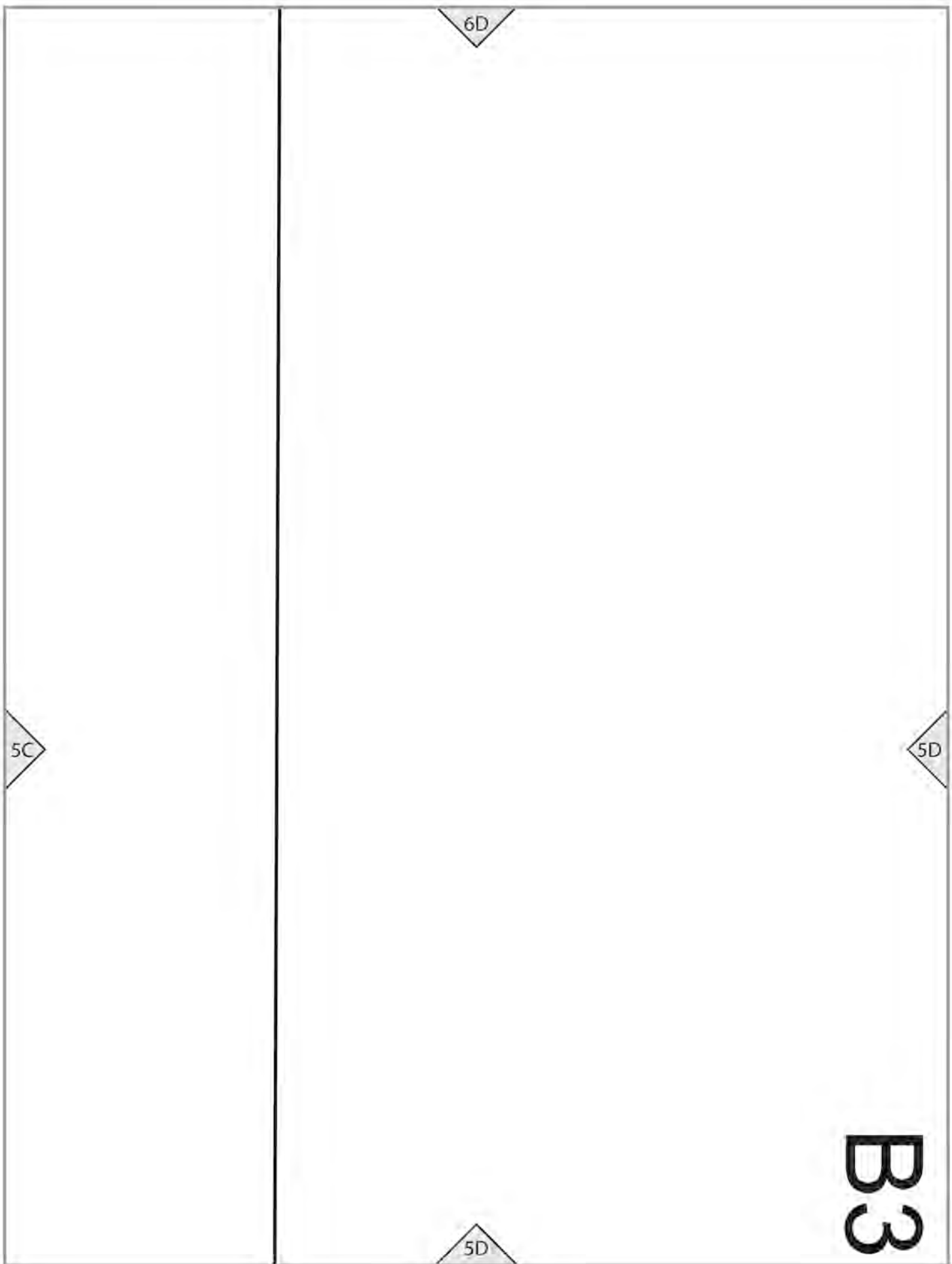
B1/B3/B5

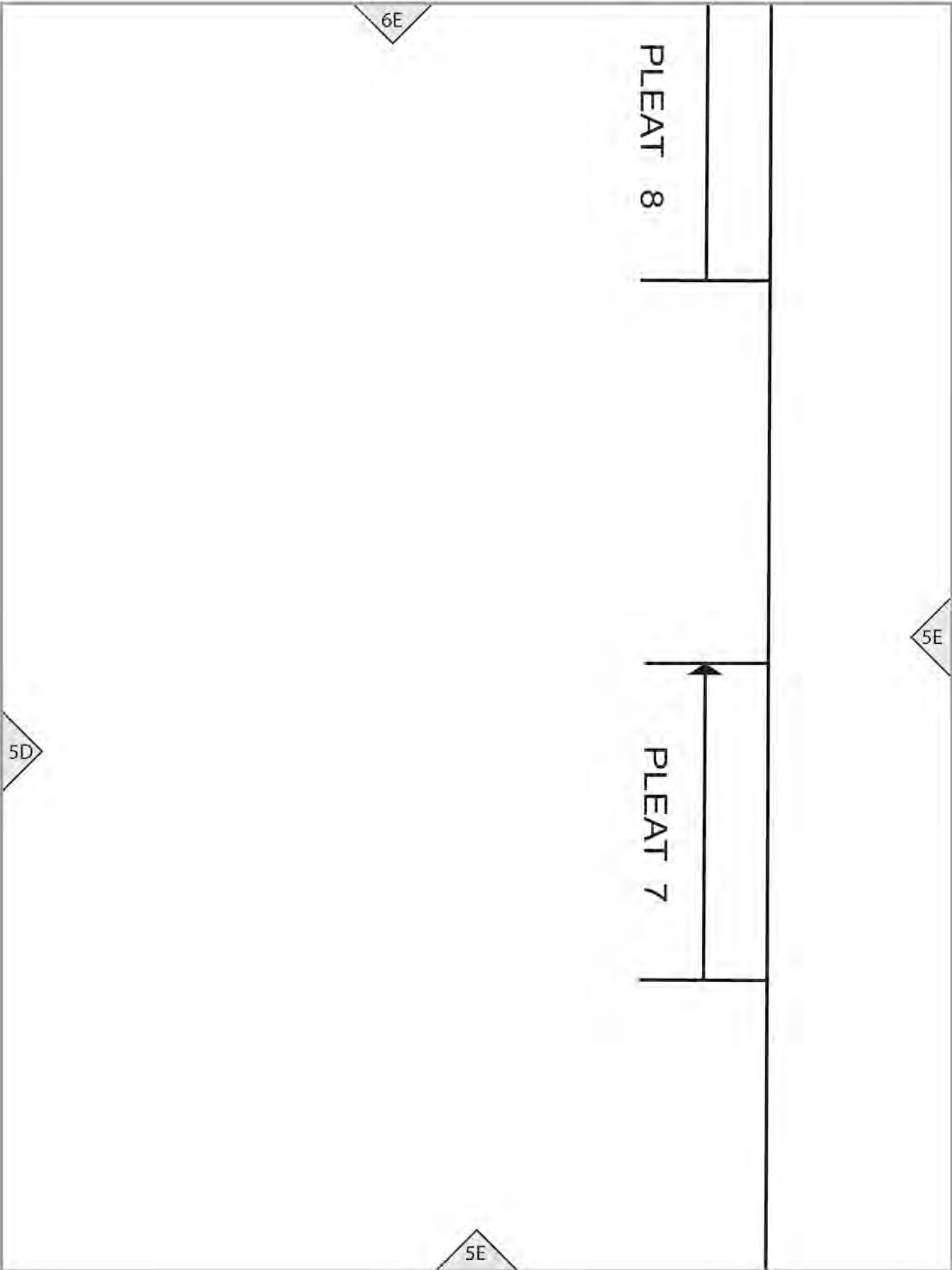
Cut

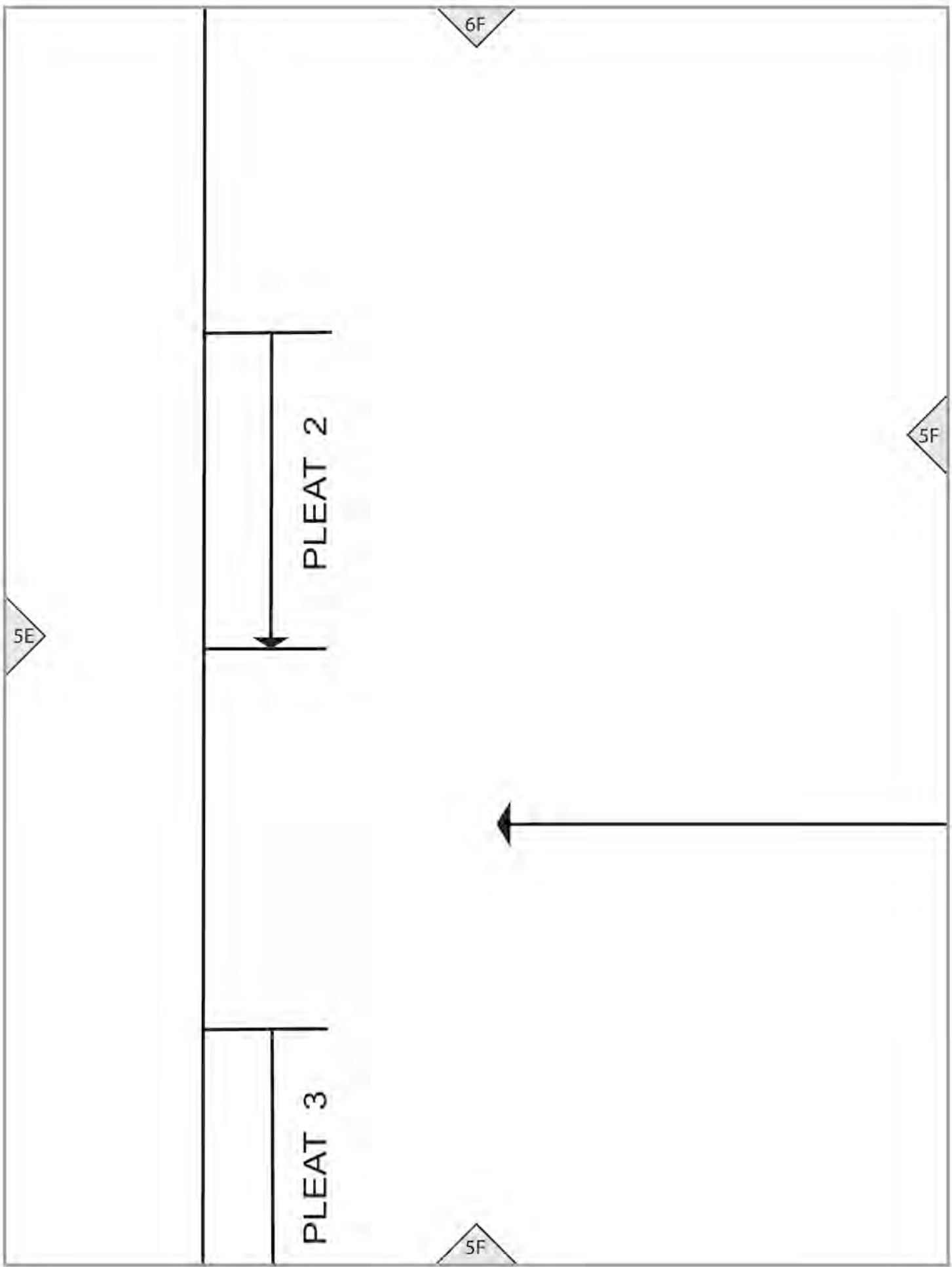
5B











5E

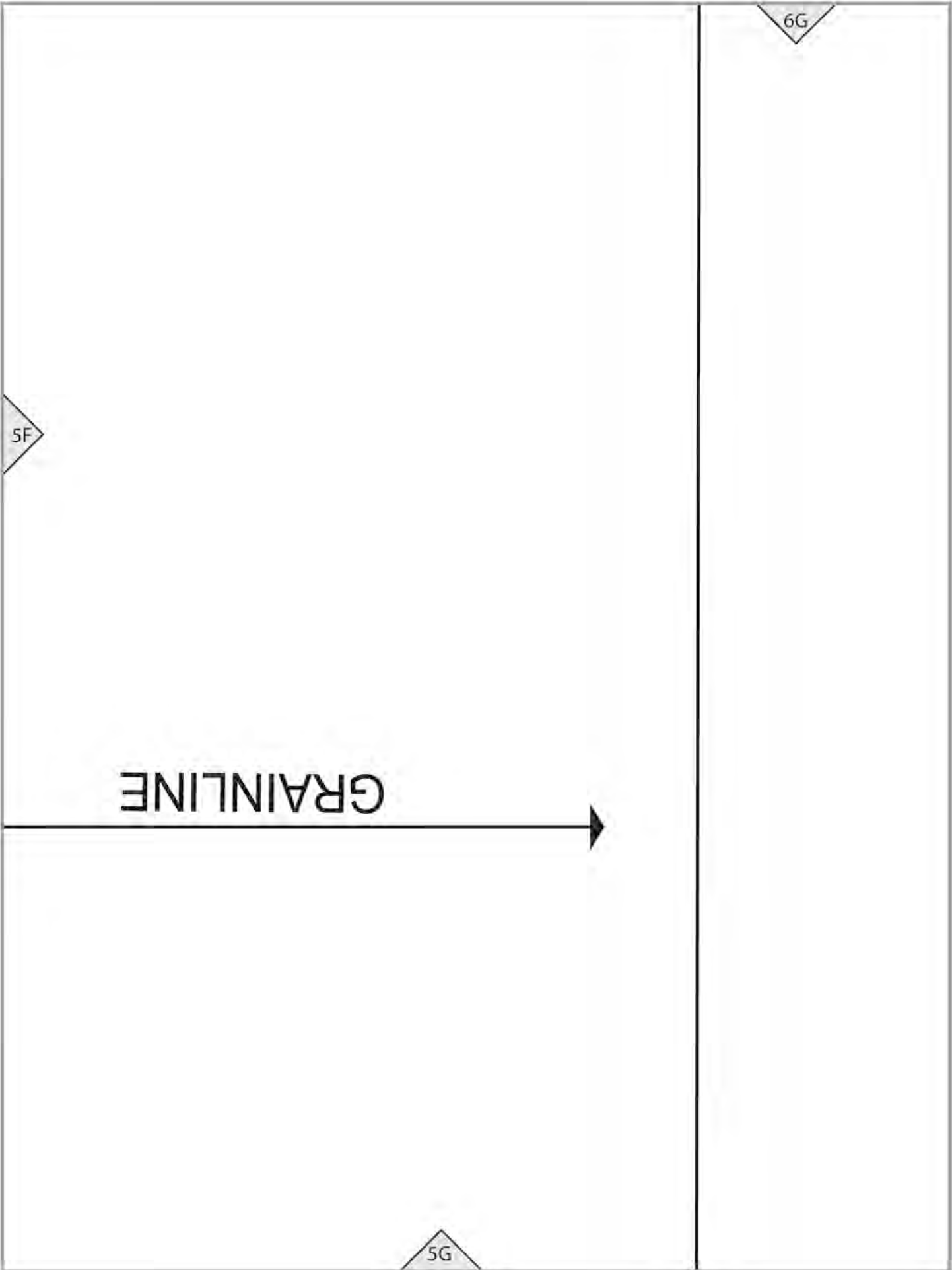
6F

PLEAT 2

5F

PLEAT 3

5F



5F

GRAINLINE

5G

6G

5

5A

4A

S

M

L

XL

XXL

XXX

FOLD

4

4A

XXL

XL

L

M

S

S

(B)

FRONT

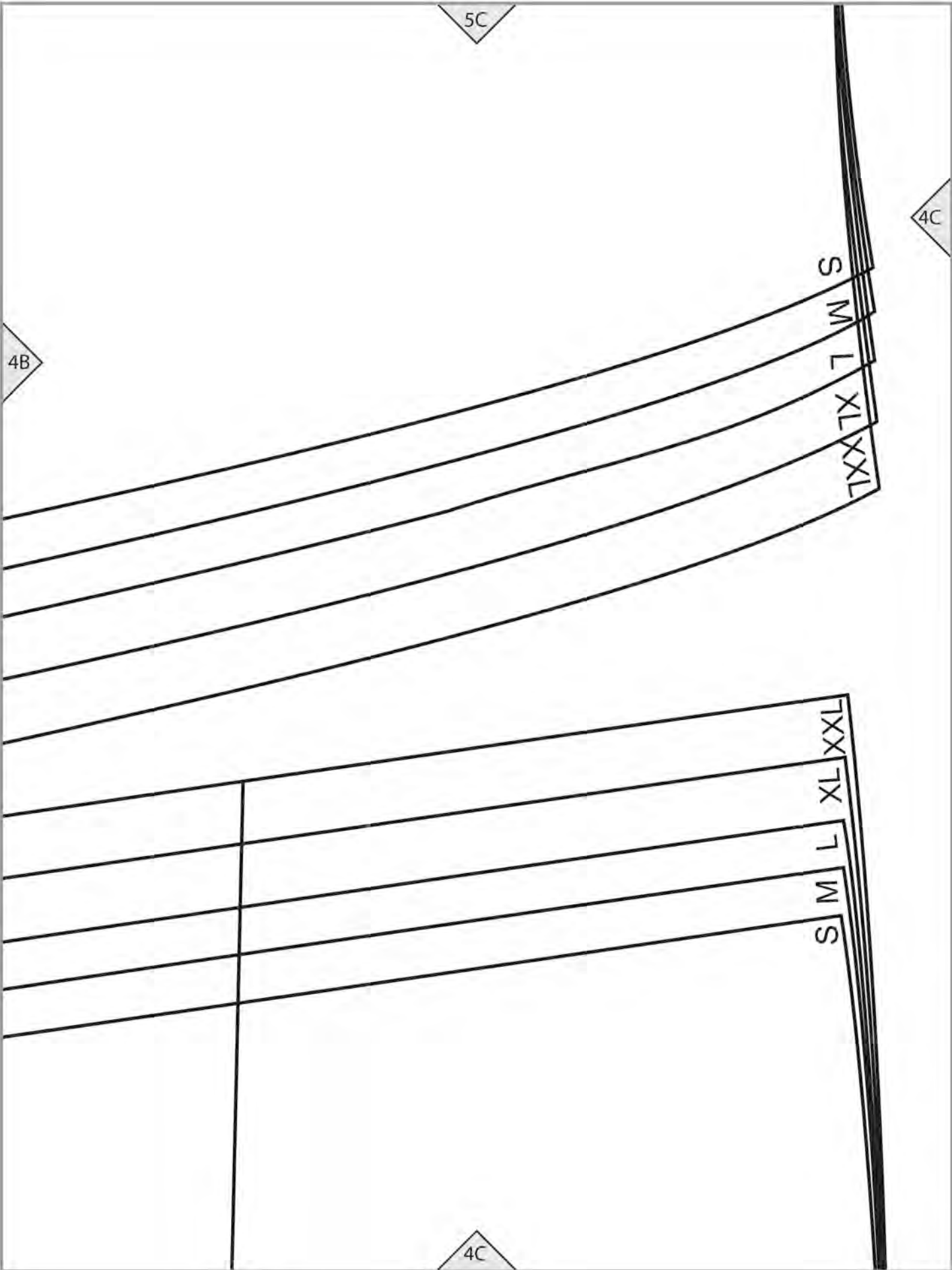
1

5B

4B

4A

4B



FRONT PLEAT

Cut 1

(Piece fabric if required)

5D

4D

4D

4C



PLEAT 6



PLEAT 5

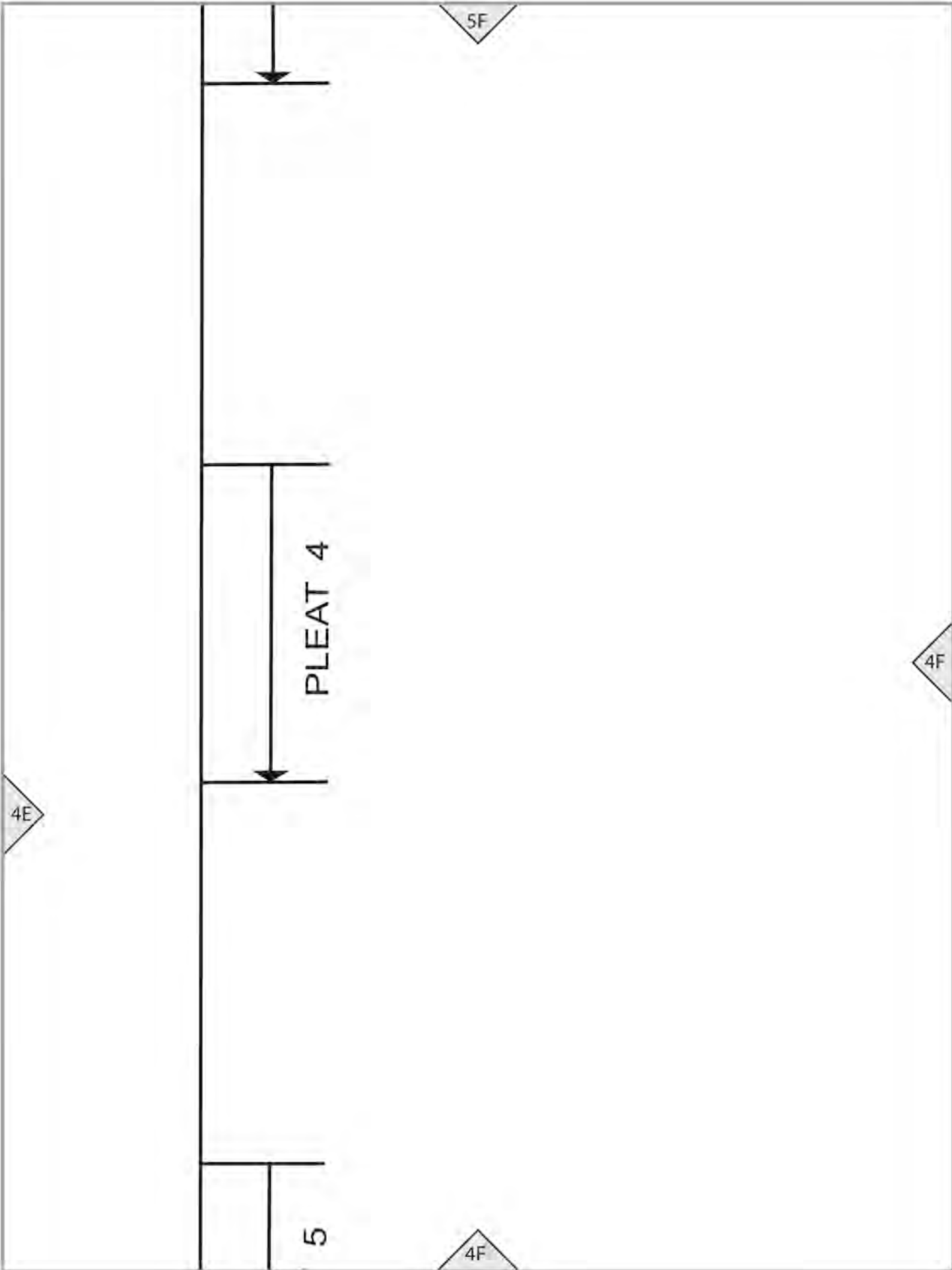
5E

4E

4E

4D

SKIRT (B)

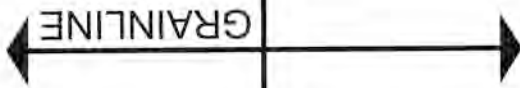


5G

4F

4G

(B)



FRONT WAISTBAND A

WITH DARTS Cut 1



4A

3A

3A



3A

SKIRT (B)

B1/B3/B5 BACK

Cut 1

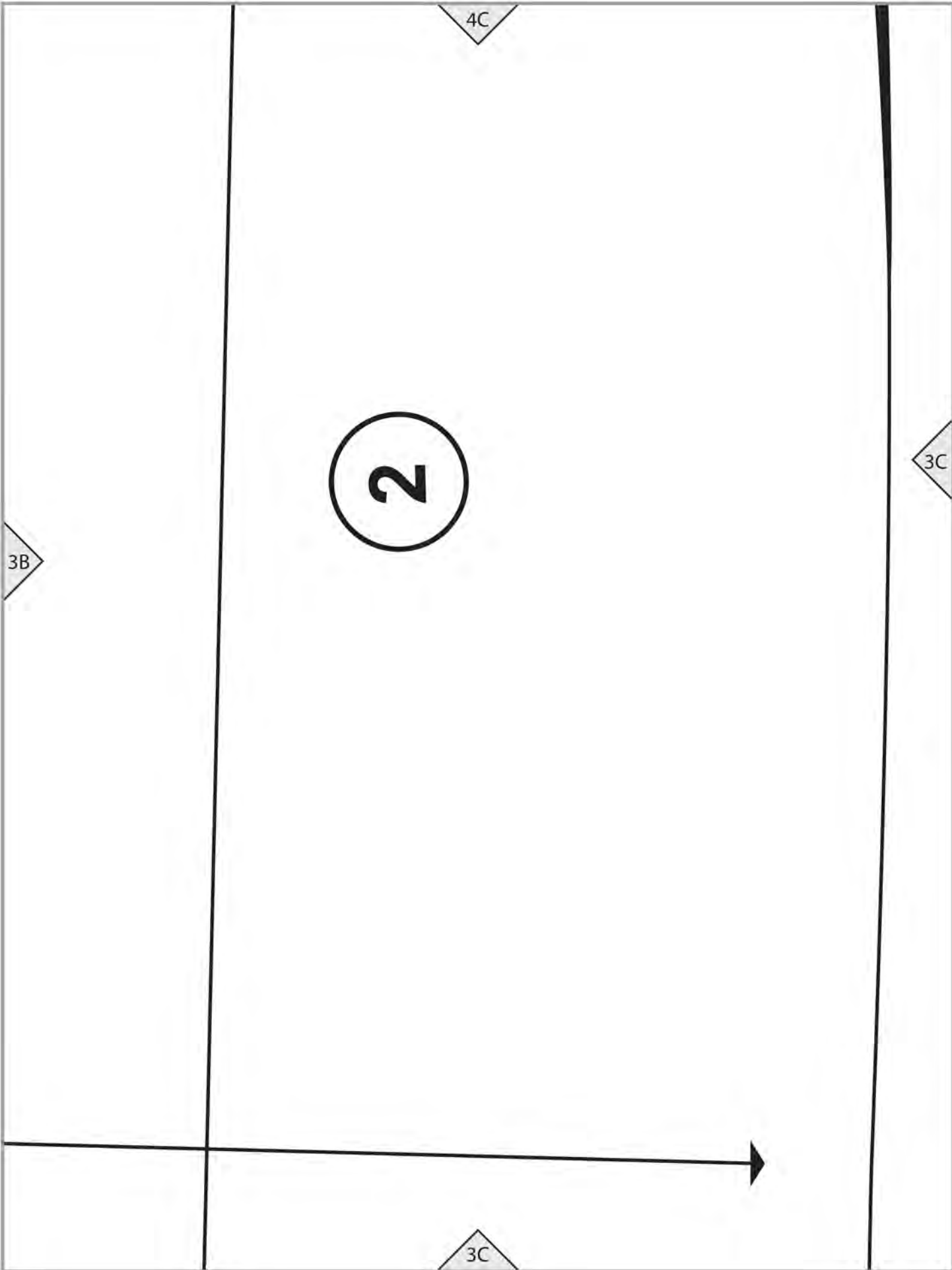
4B

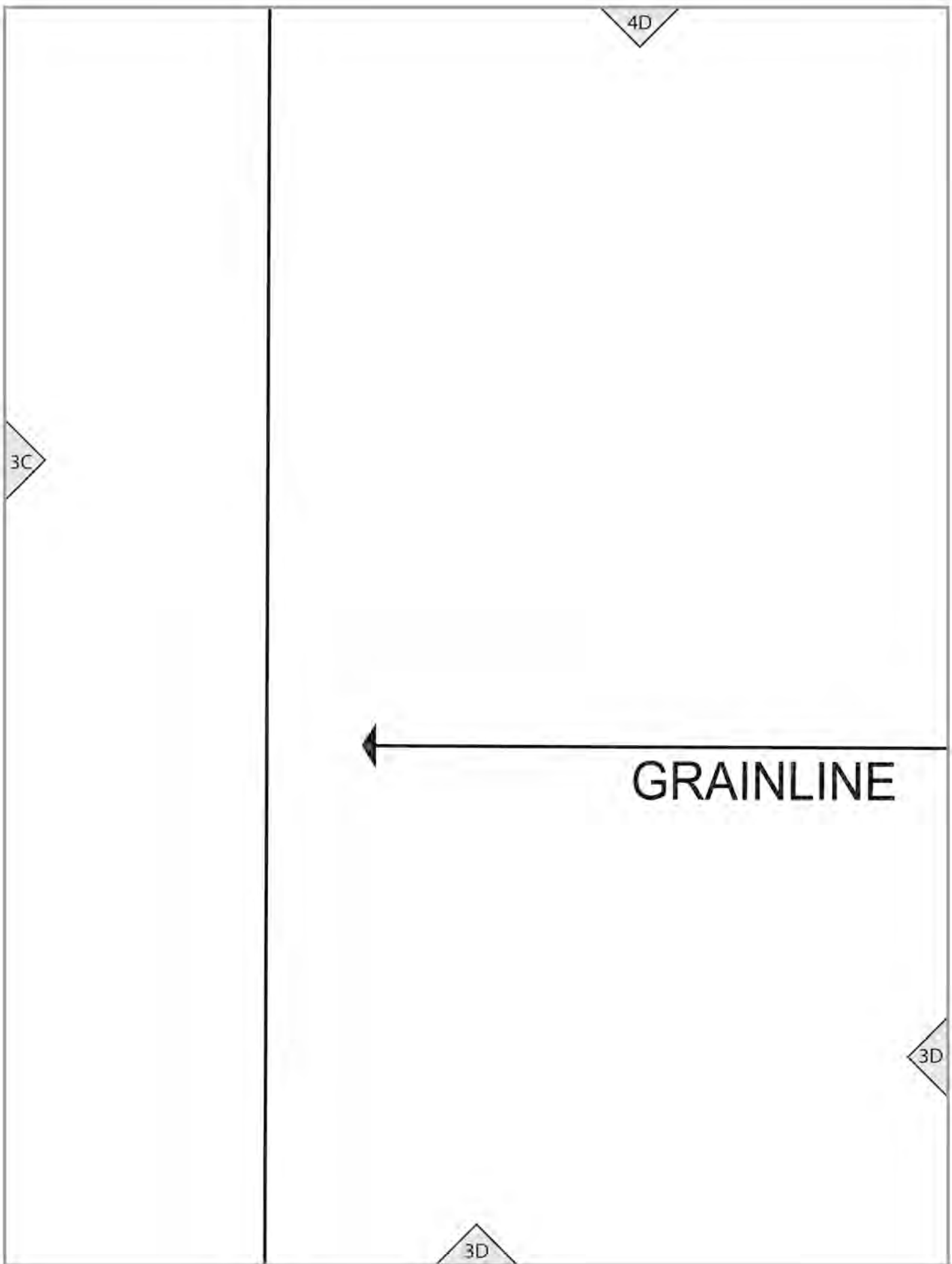
3B

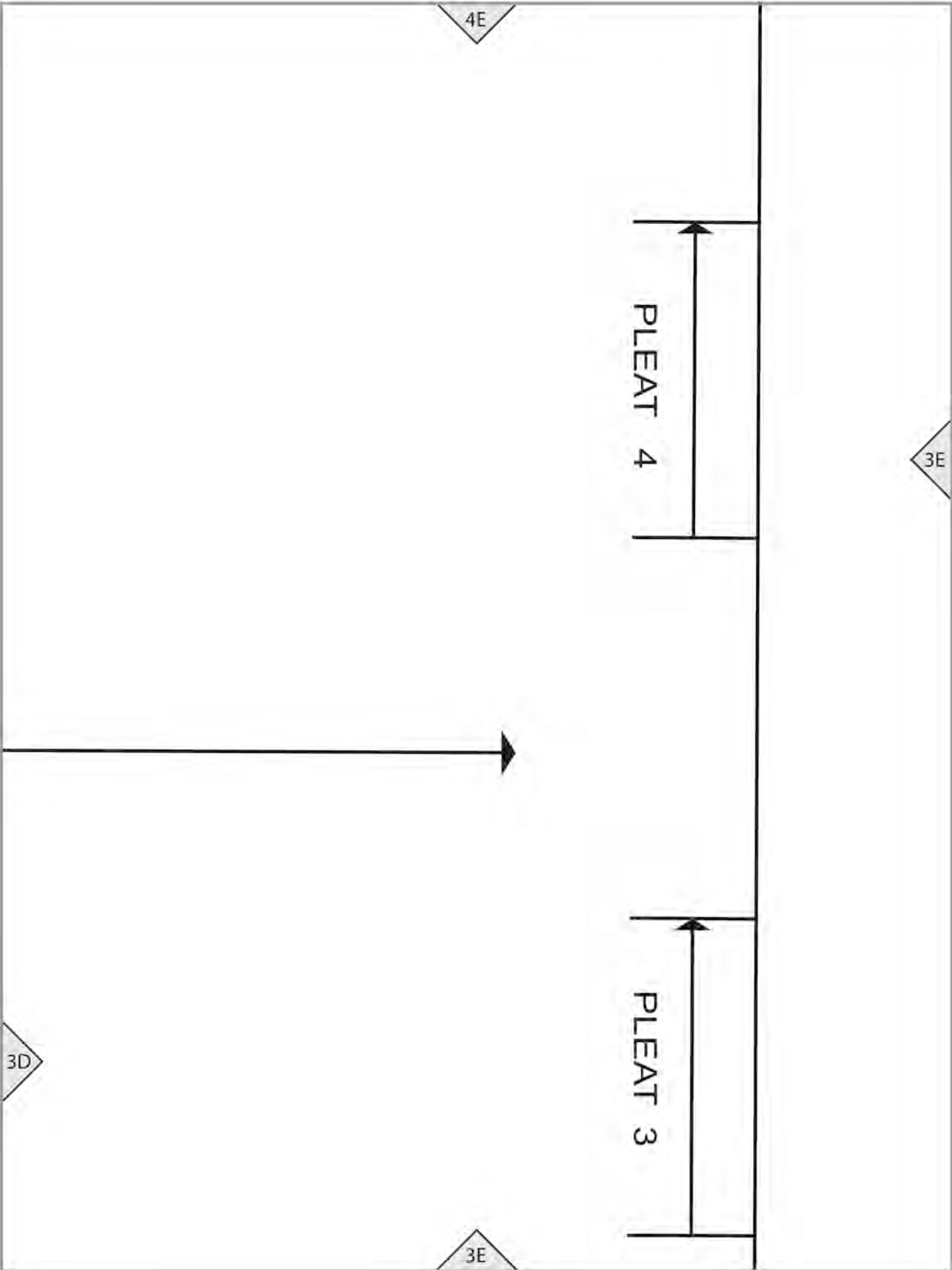
GRAINLINE



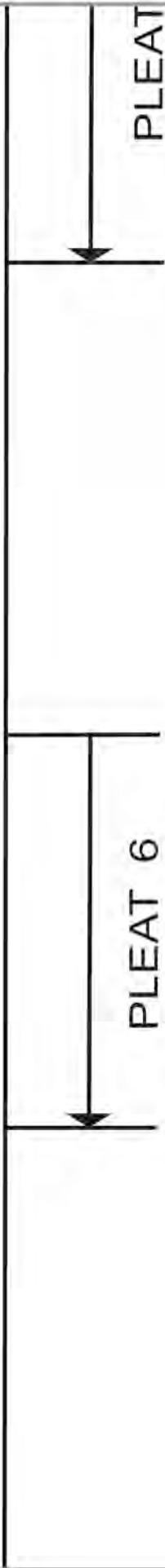
3B







3E



4F

SKIRT (B)

B3 BACK PLEAT

3F

3F

Cut 1

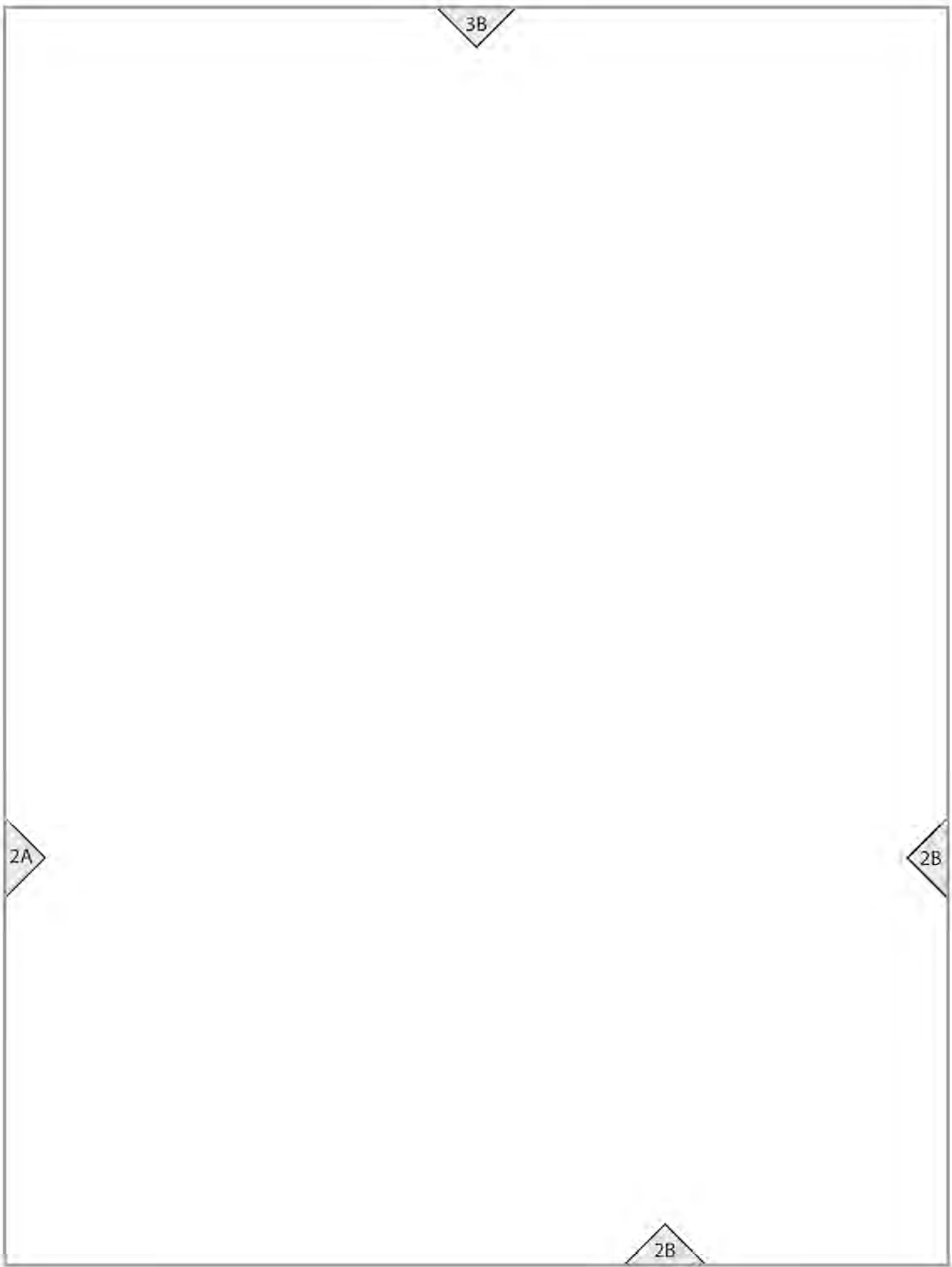
(Piece fabric if required)

15

3F

4G

3G



2B

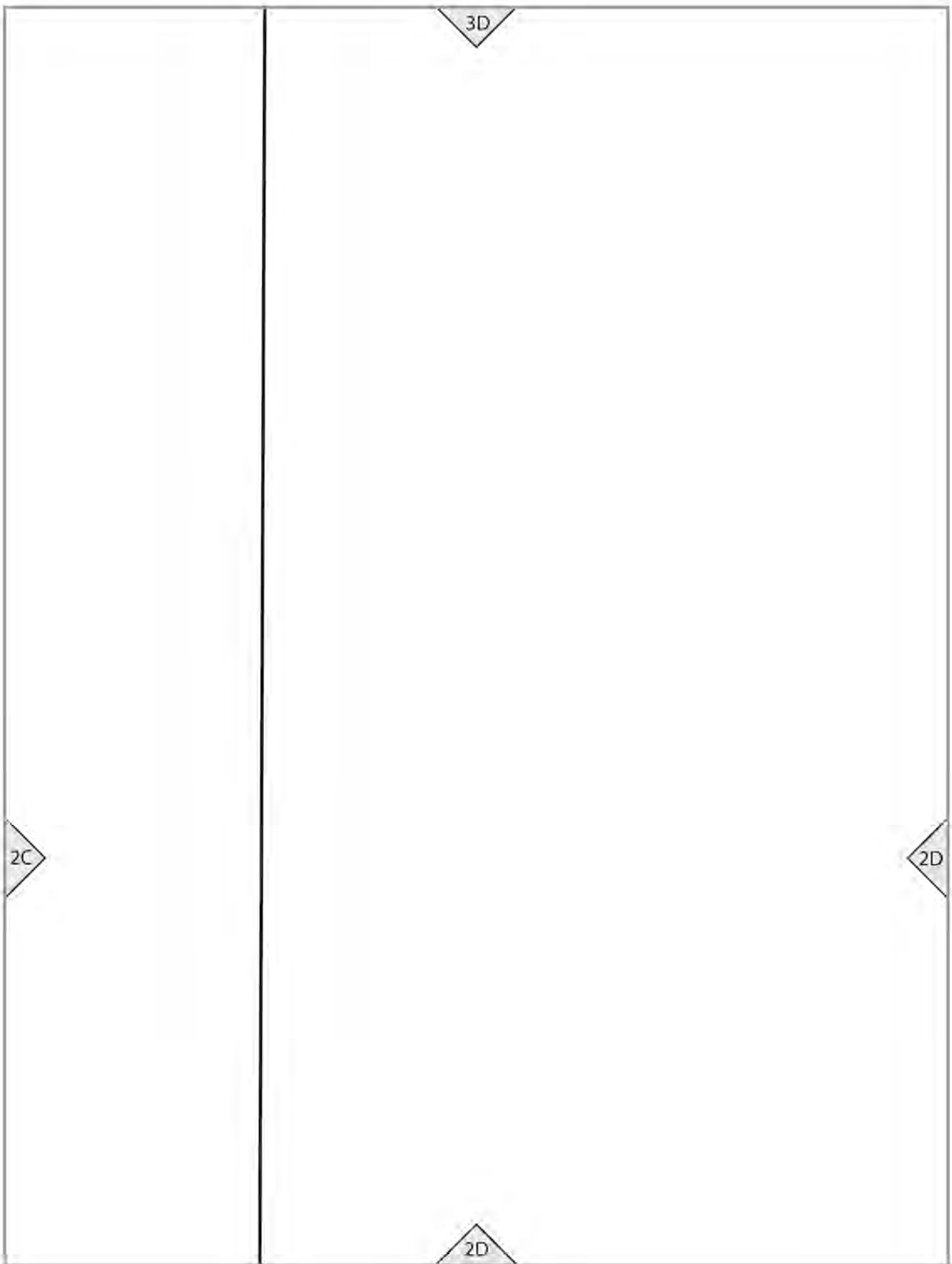
lengthen/shorten line

3C

2C

B3 cutting line

2C



3E

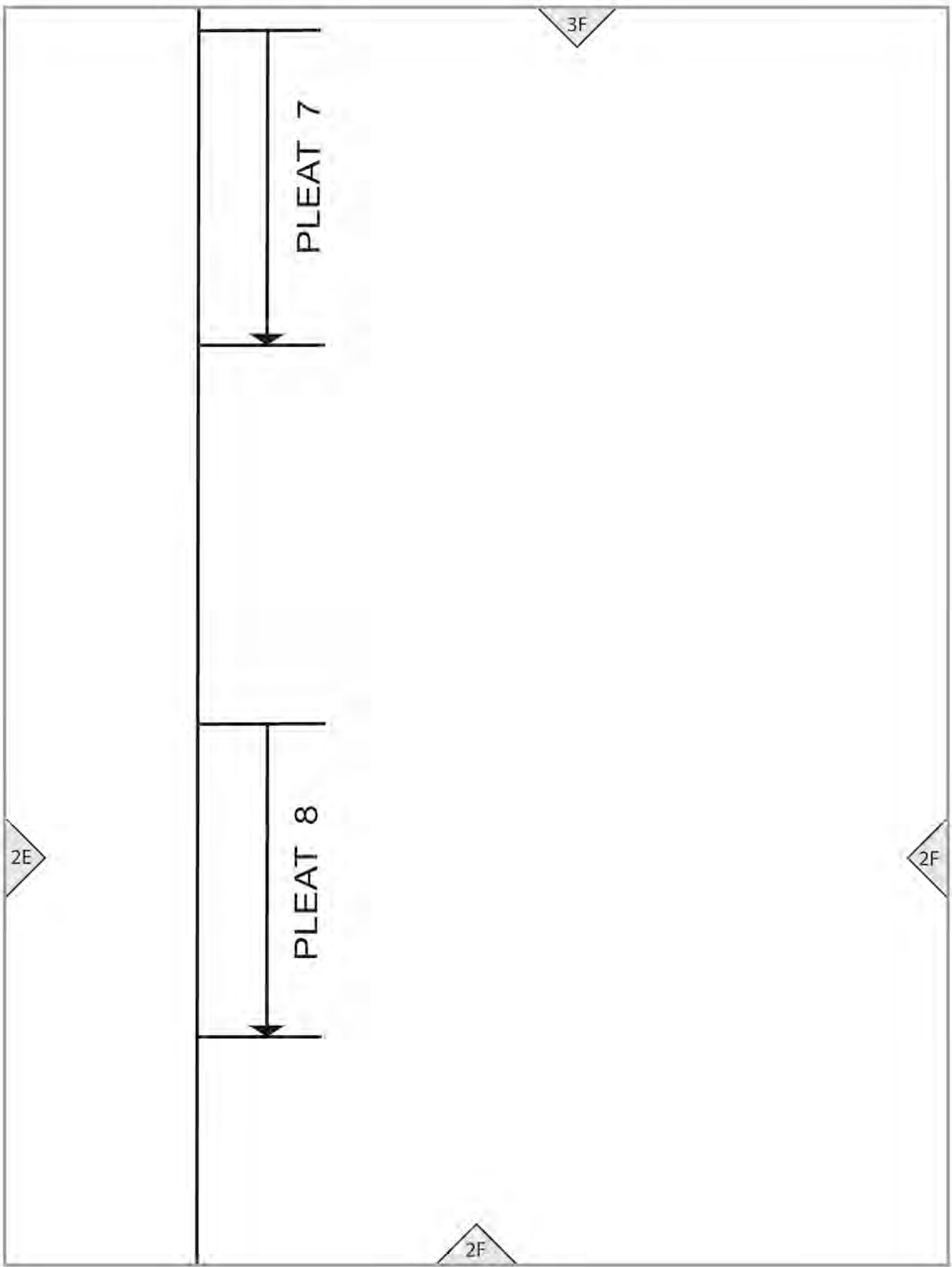


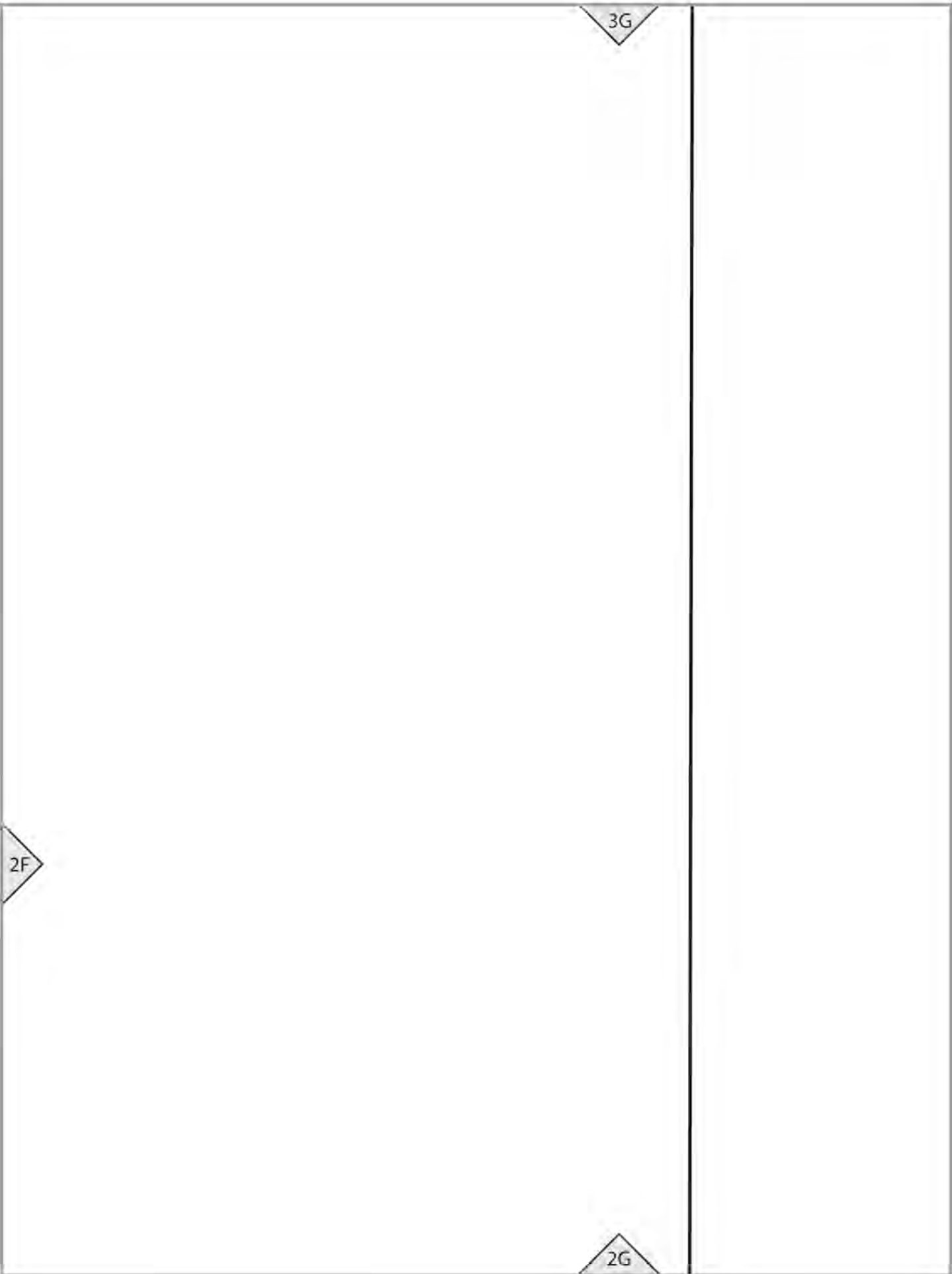
14

2D

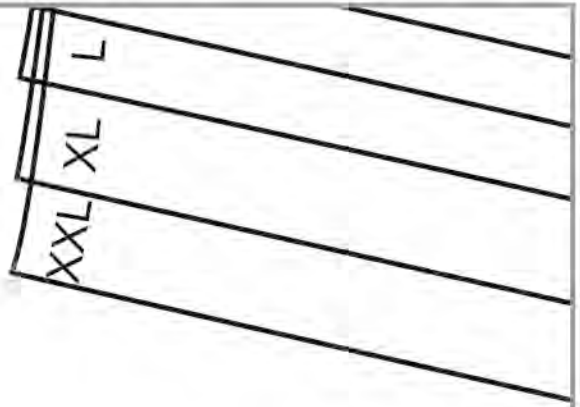
2E

2E





2A



1A

XXL	XL	L	M	S

2B

1A

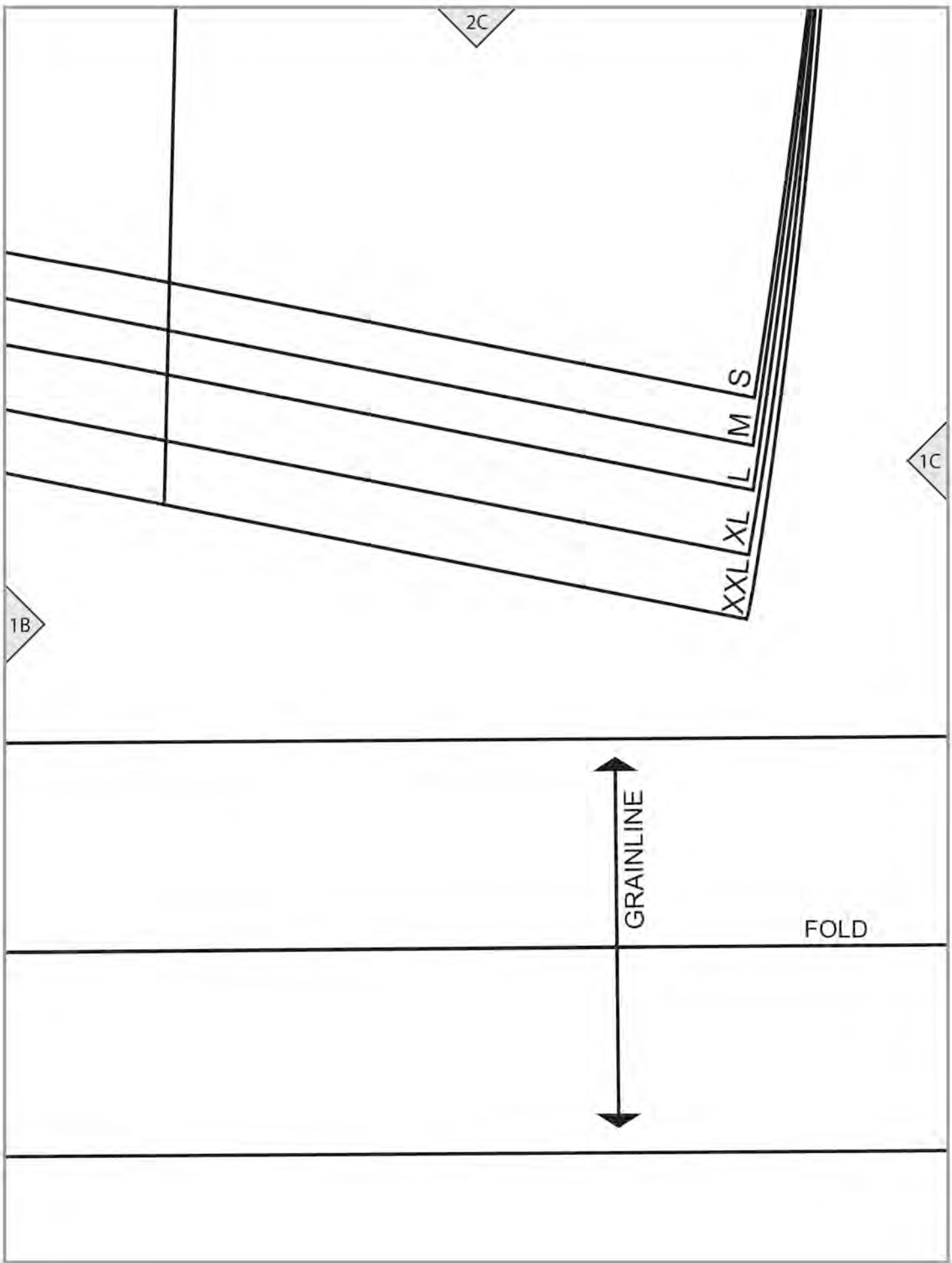
1B

SKIRT(B)
FRONT WAISTBAND B

NO DARTS

Cut 1





1C

2D

S

M

L

XL

XXL

1D

4

2E

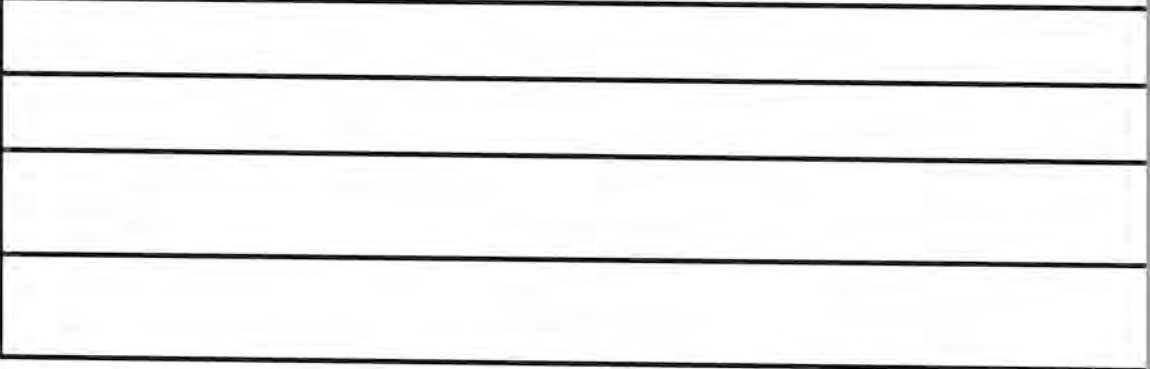
1E

1D

1E

2F

1F



2G

1F

S

M

L

XL

XXL