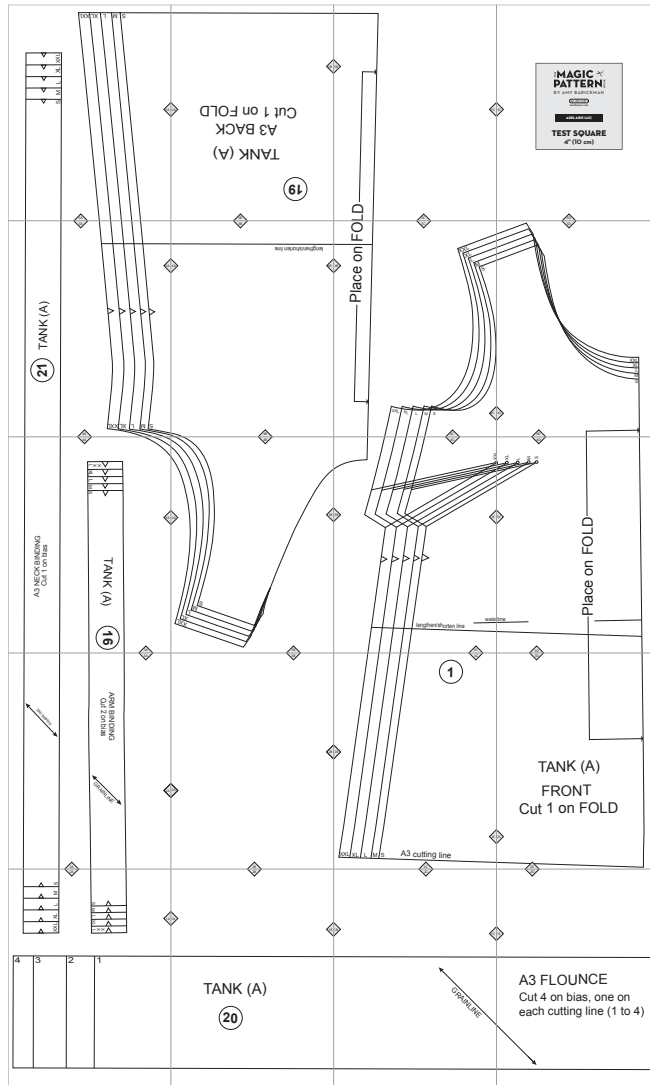


A3. Adelaide



Copyright ©2014 by Amy Barickman

All rights reserved. Amy Barickman's patterns may be printed for personal use, but may not be otherwise reproduced—mechanically, electronically, or by any other means, including photocopying—without written permission of the publisher.

Sewing pattern designs for *The Magic Pattern Book* by Amy Barickman are intended for personal use only, and not as the basis for commercial manufacturing.

Workman Publishing, New York • workman.com

▼	XXL
▼	XL
▼	L
▼	M
▼	S

7XX 7X 7 W S

5A

5A

19

TANK (A)

A3 BACK

Cut 1 on FOLD

5A

5B

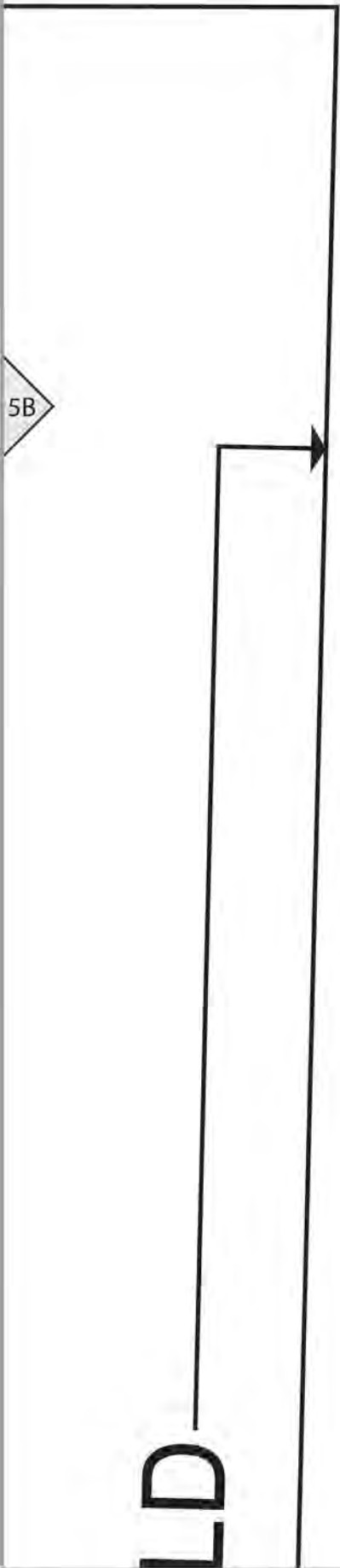
5B

5B

5C

LD

5C



THE **MAGIC**  **PATTERN** BOOK

BY AMY BARICKMAN

workman

workman.com

ADELAIDE (A3)

TEST SQUARE

4" (10 cm)

5C

5D

21 TANK (A)

5A

4A

TX TX T W S

4A

5B

lengthen/shorten line

4A

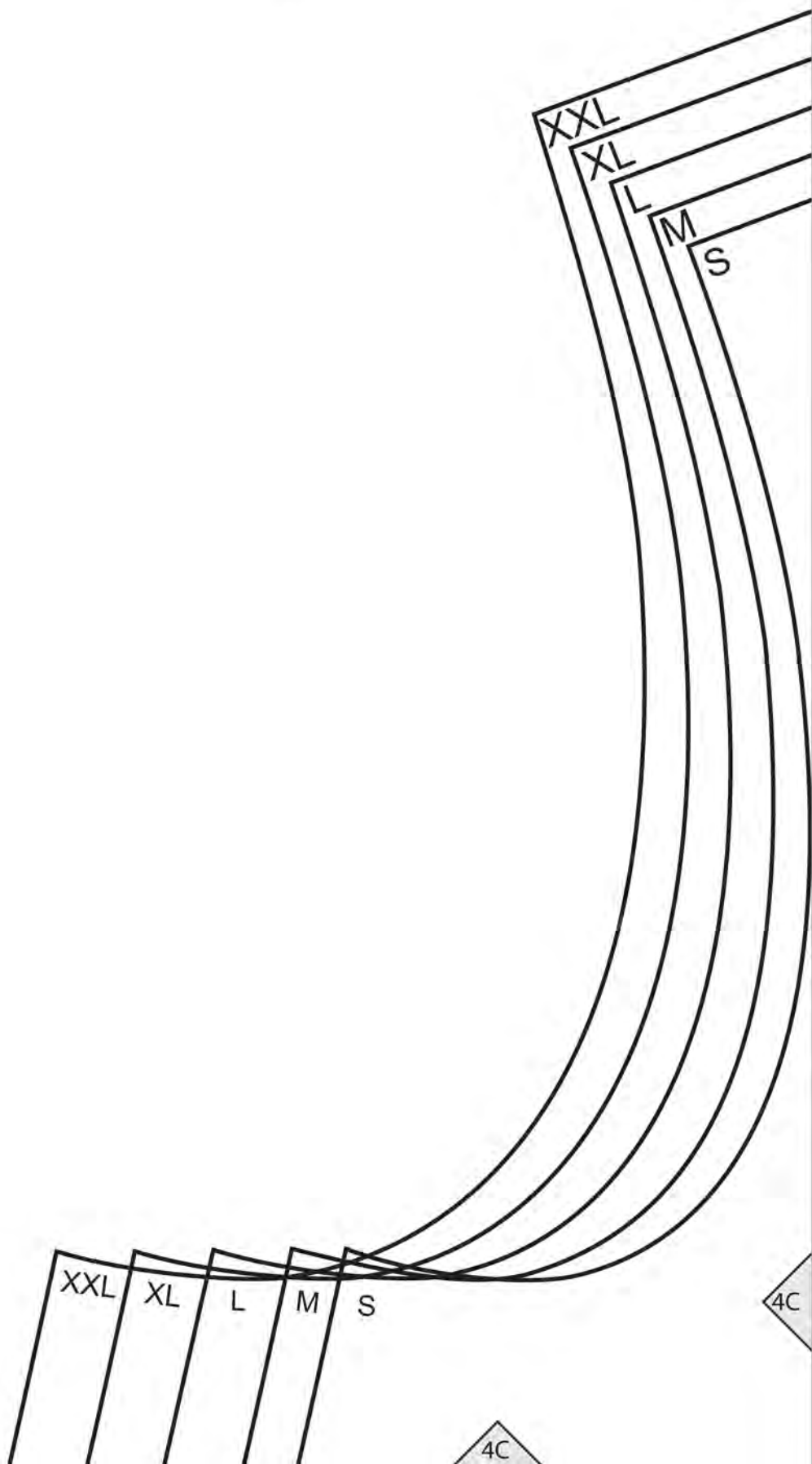
4B

4B

Place on FO

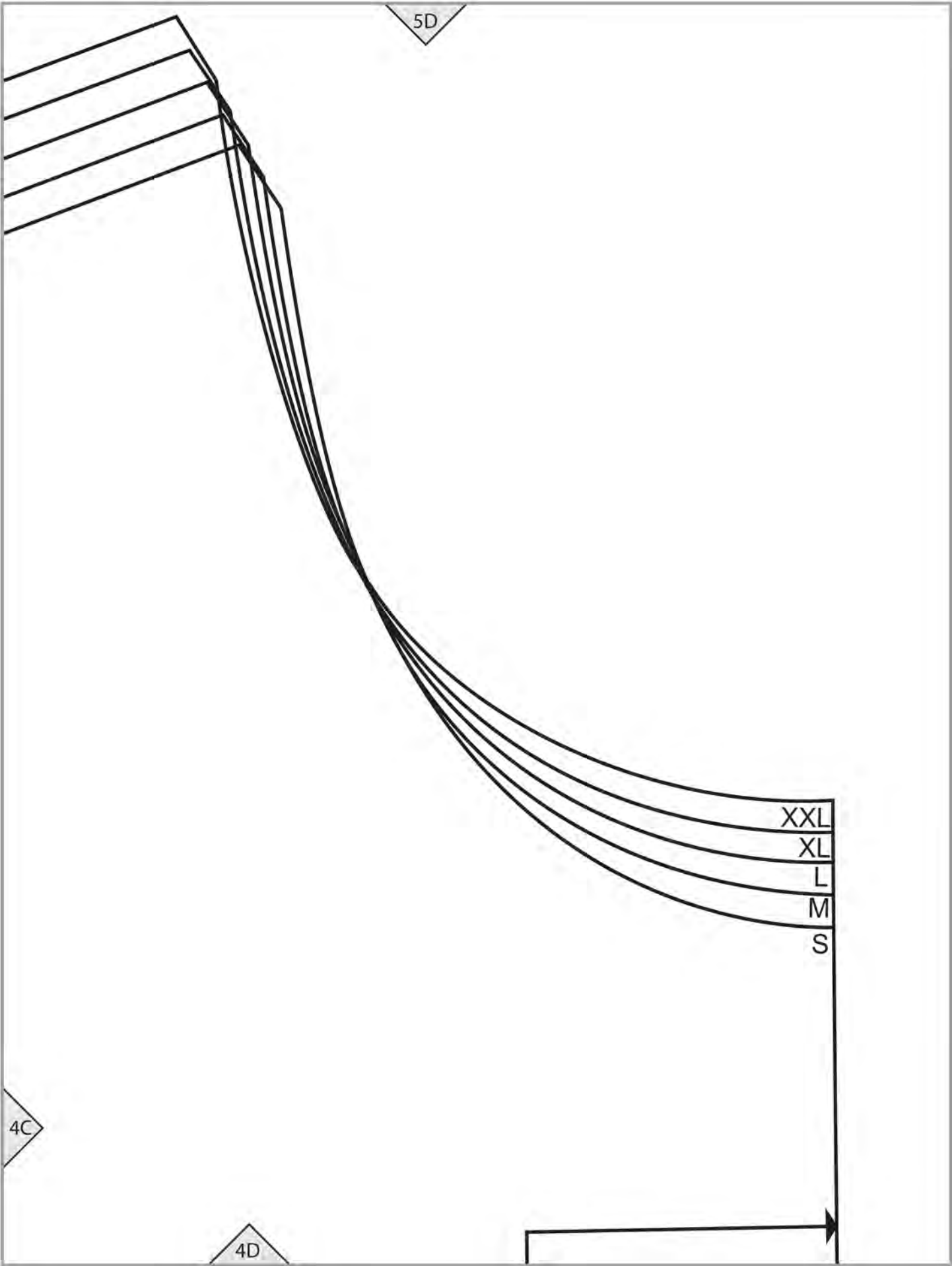
4B

5C



4C

4C



A3 NECK BINDING
Cut 1 on bias

TANK (A)

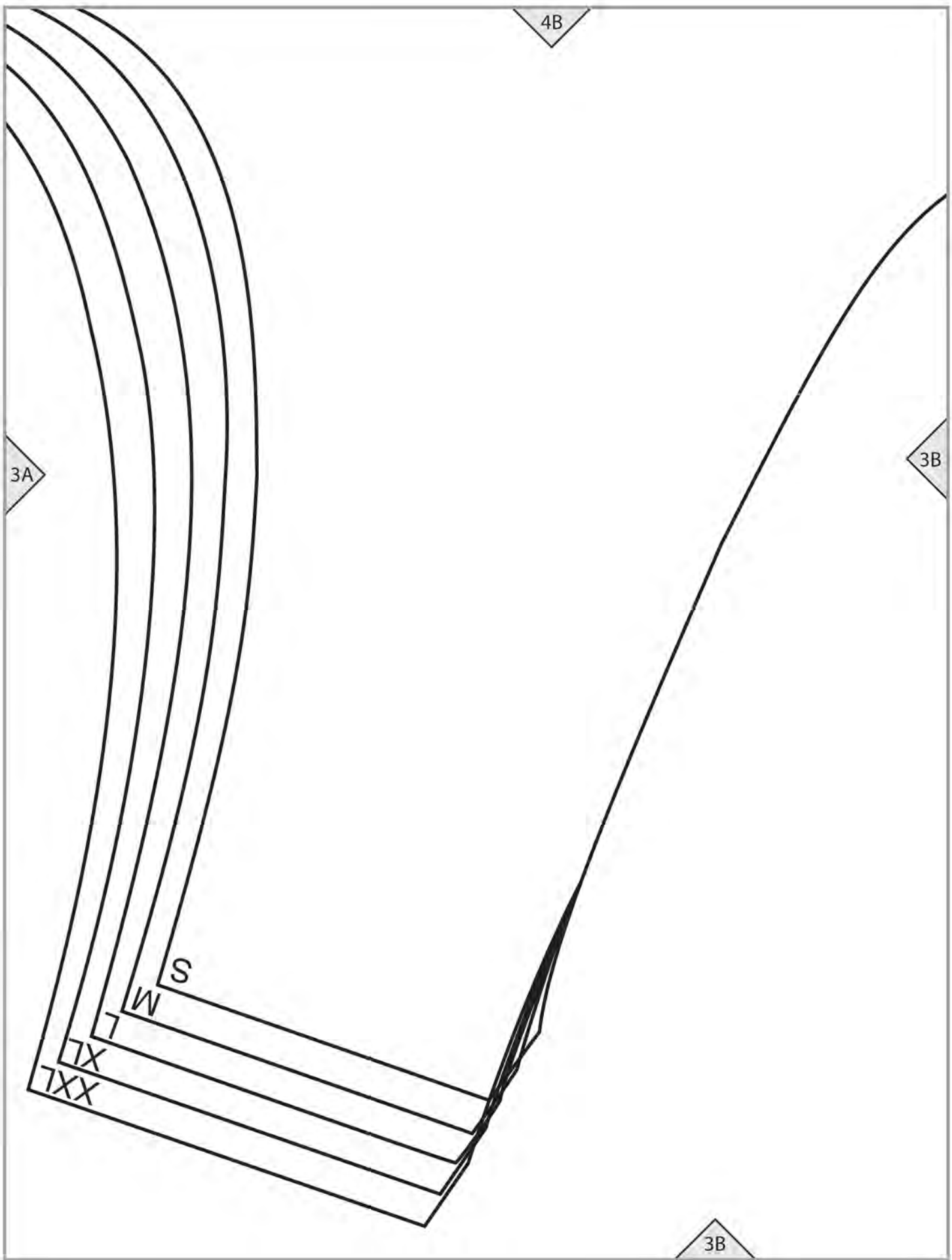
16

L	XX	▽
XL		▽
L		▽
M		▽
S		▽

4A

3A

3A



4B

3A

3B

S

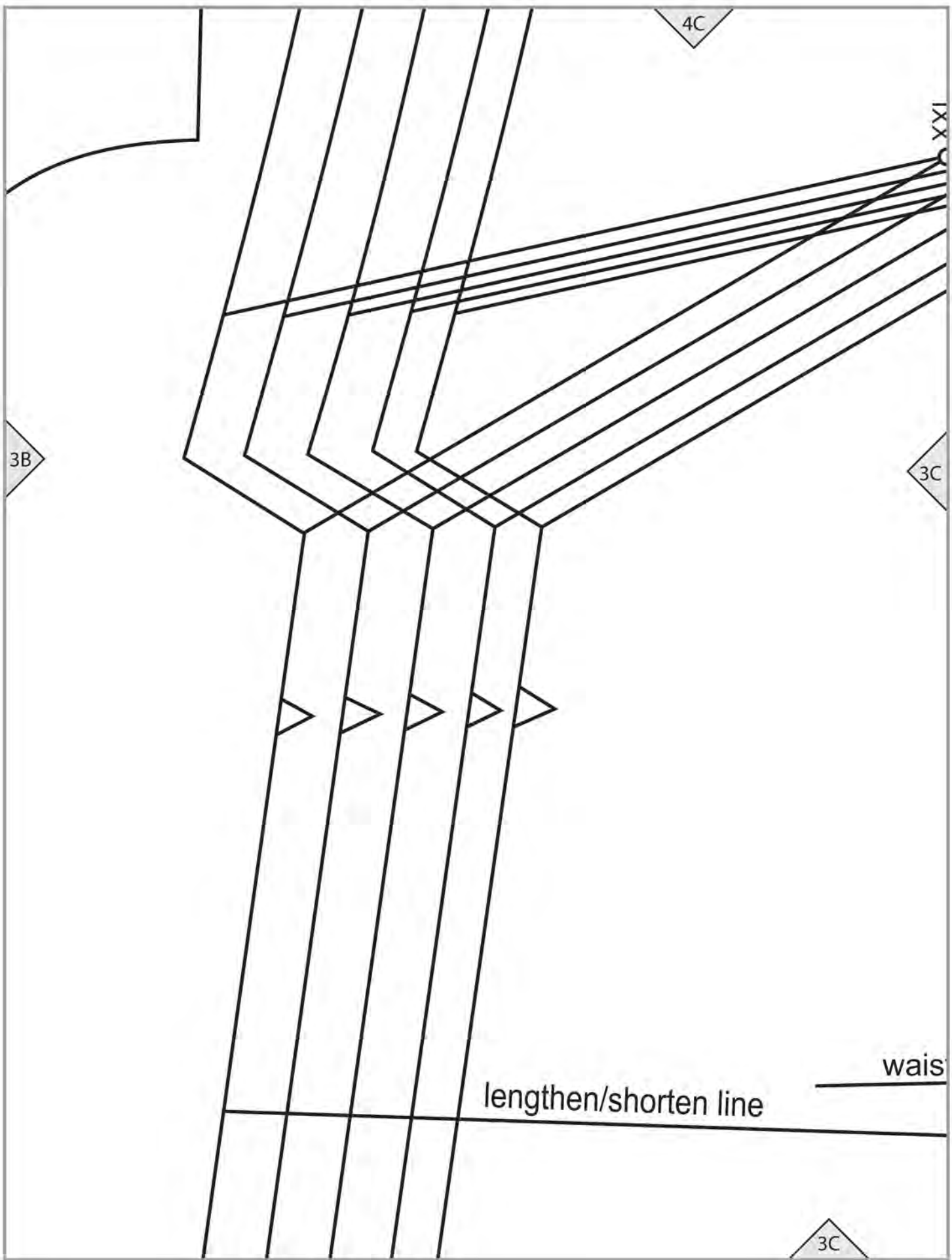
W

T

TX

TXX

3B



4C

3B

3C

XXI

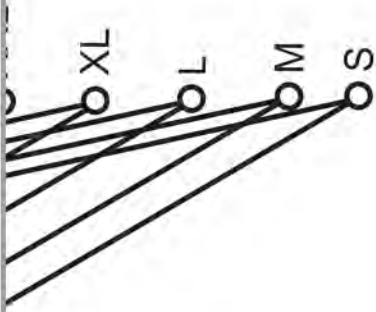
lengthen/shorten line

wais

3C

Place on FOLD

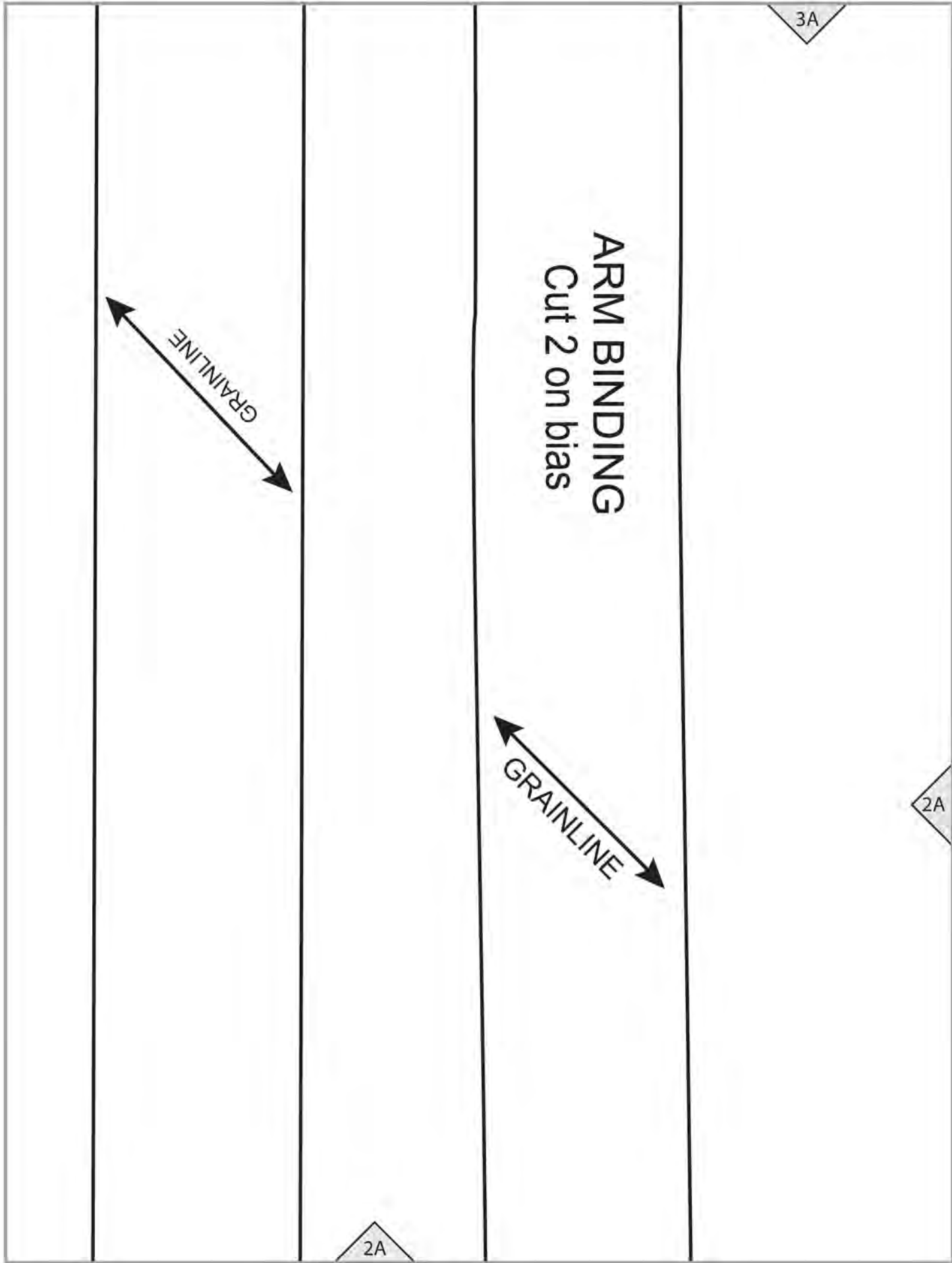
line



4D

3C

3D



3A

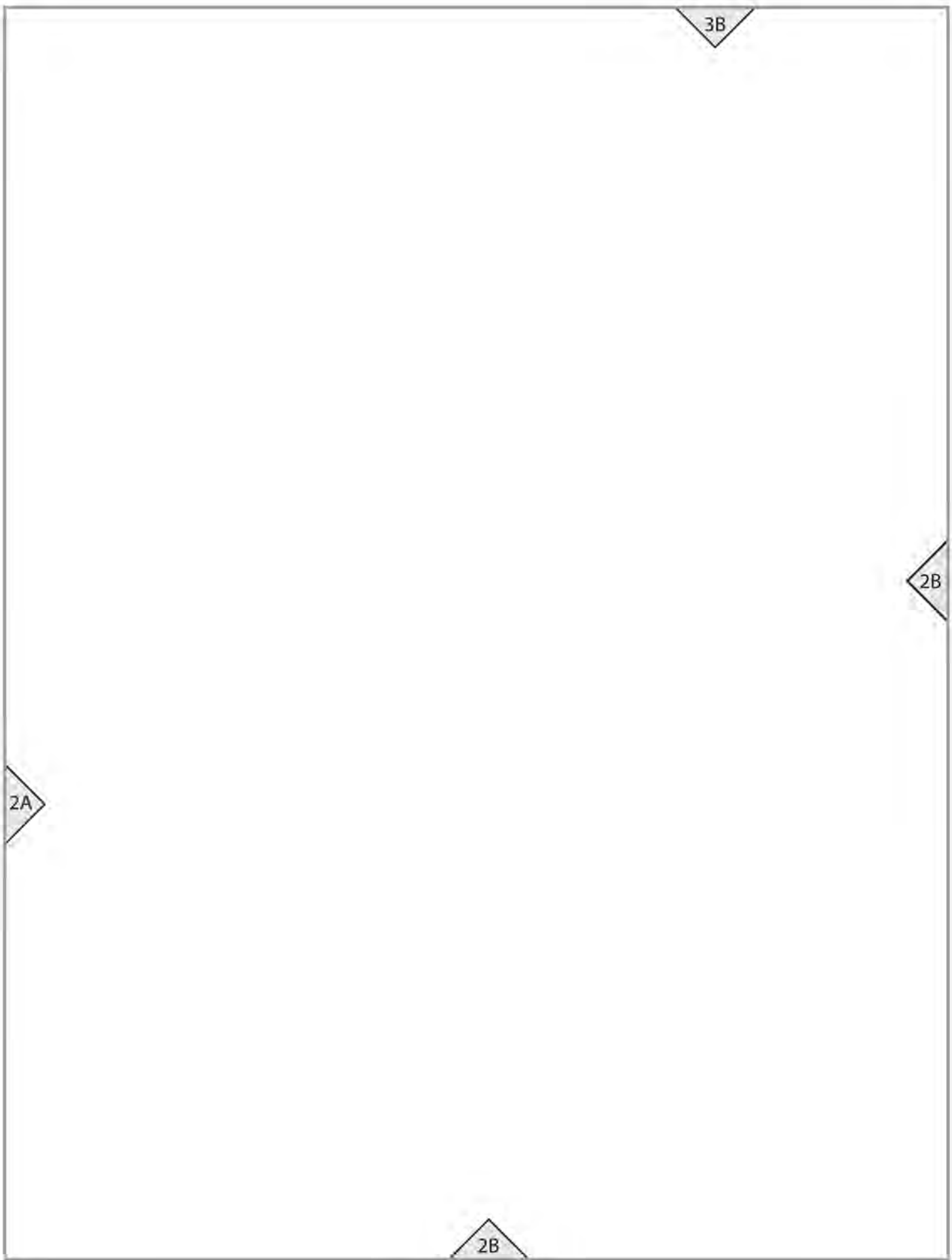
ARM BINDING
Cut 2 on bias

GRAINLINE

GRAINLINE

2A

2A



3C

1

2B

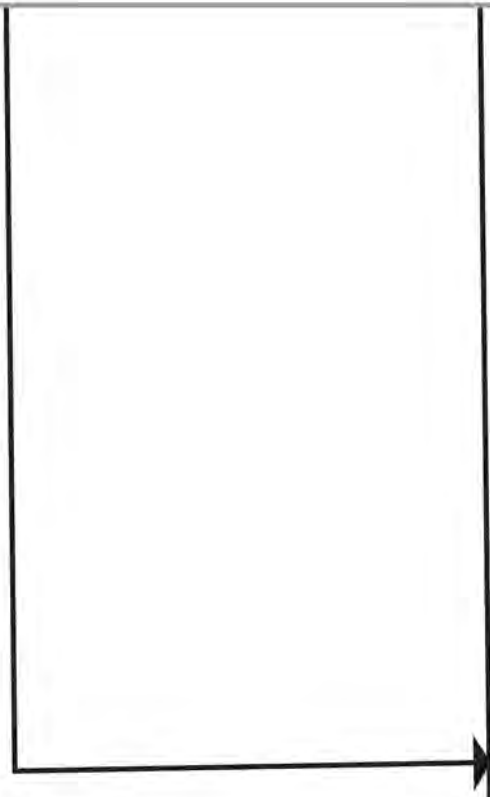
2C

XXL XL L M S

A3 cutting line

2C

3D



TANK (A)
FRONT
Cut 1 on FOLD

2C

2D

△	S
△	M
△	L
△	XL
△	XXL

2A

S	△
M	△
L	△
XL	△
LXX	△

1A

4

3

2

1

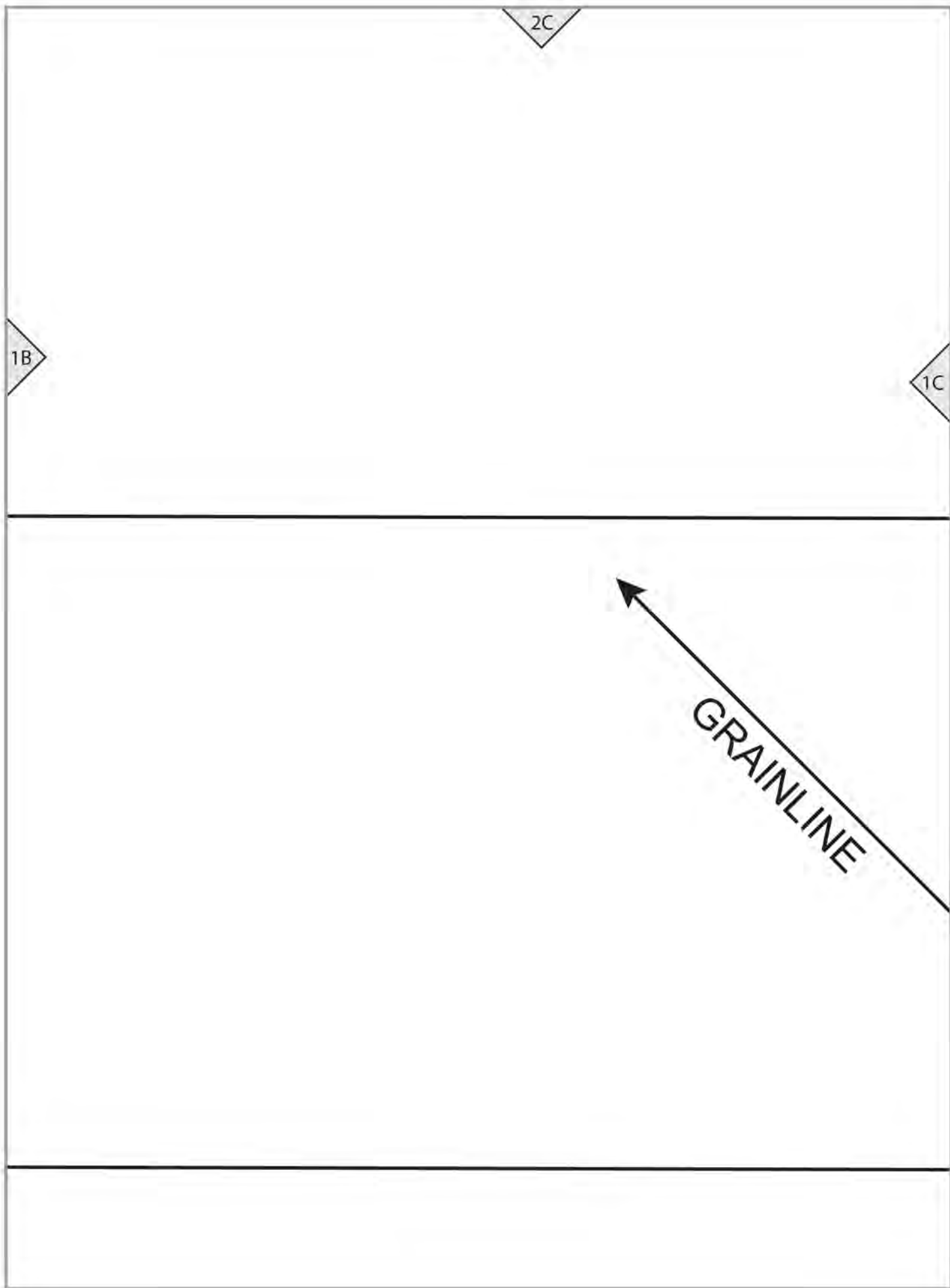
2B

1A

1B

TANK (A)

20



2D

1C

A3 FLOUNCE

Cut 4 on bias, one on each cutting line (1 to 4)

