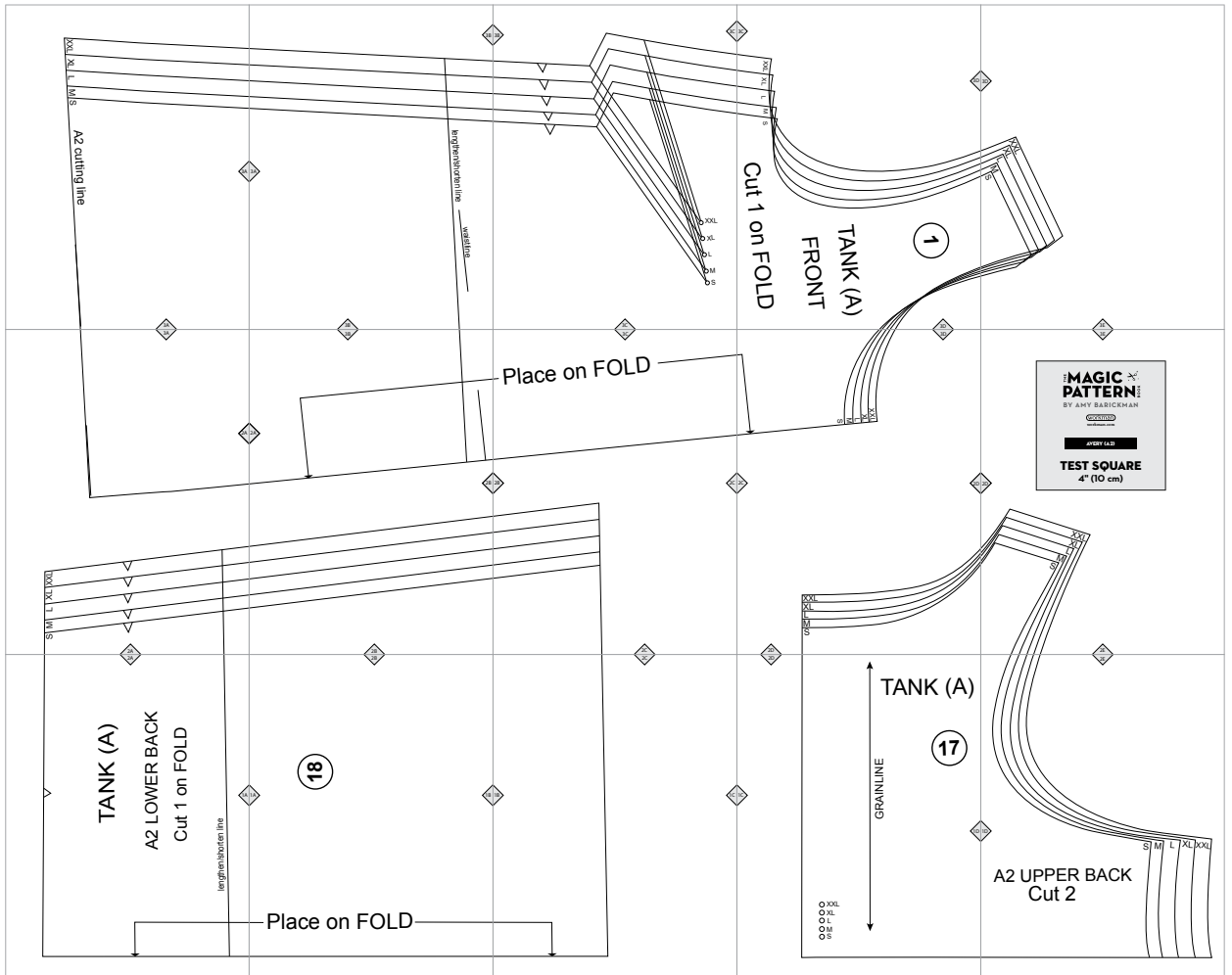


A2. Avery



Copyright ©2014 by Amy Barickman

All rights reserved. Amy Barickman's patterns may be printed for personal use, but may not be otherwise reproduced—mechanically, electronically, or by any other means, including photocopying—without written permission of the publisher.

Sewing pattern designs for *The Magic Pattern Book* by Amy Barickman are intended for personal use only, and not as the basis for commercial manufacturing.

Workman Publishing, New York • workman.com

XXL

XL

L

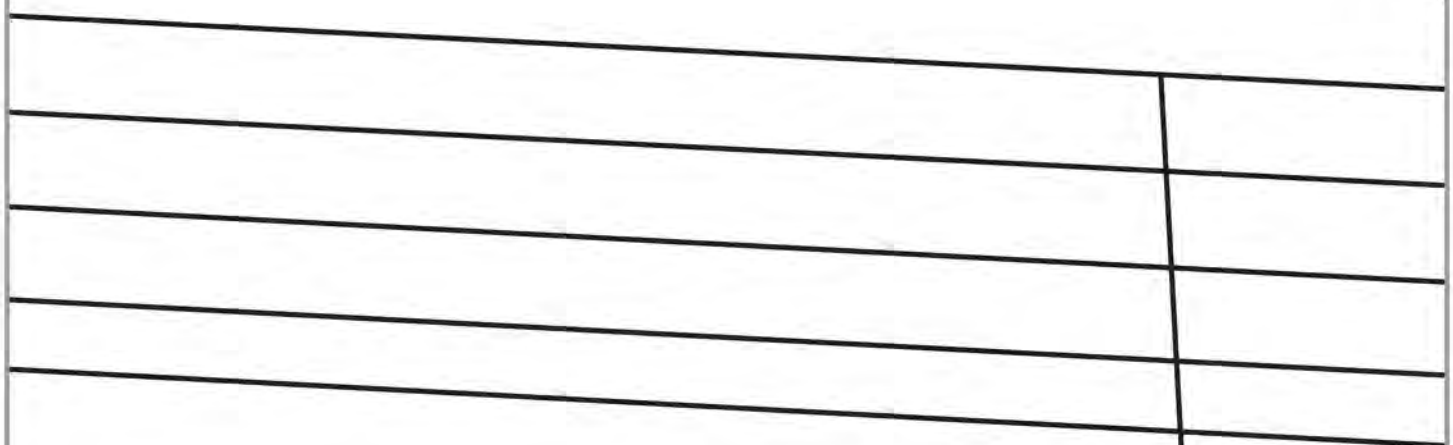
M

S

A2 cutting line



3B



lengthen/shorten line



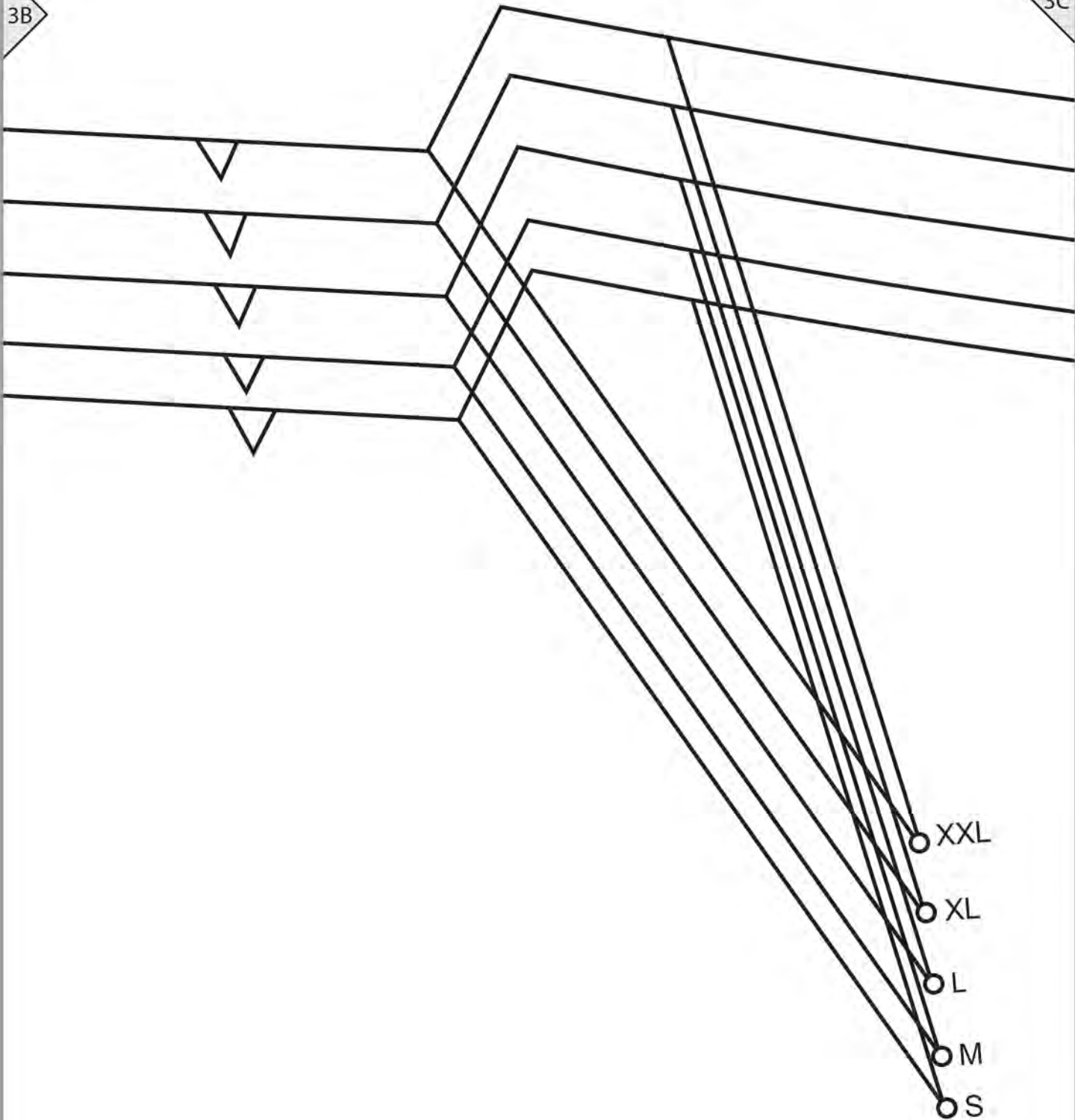
waistline

3A

3B

3B

3C



3C

3C

3D

XXL

XL

L

M

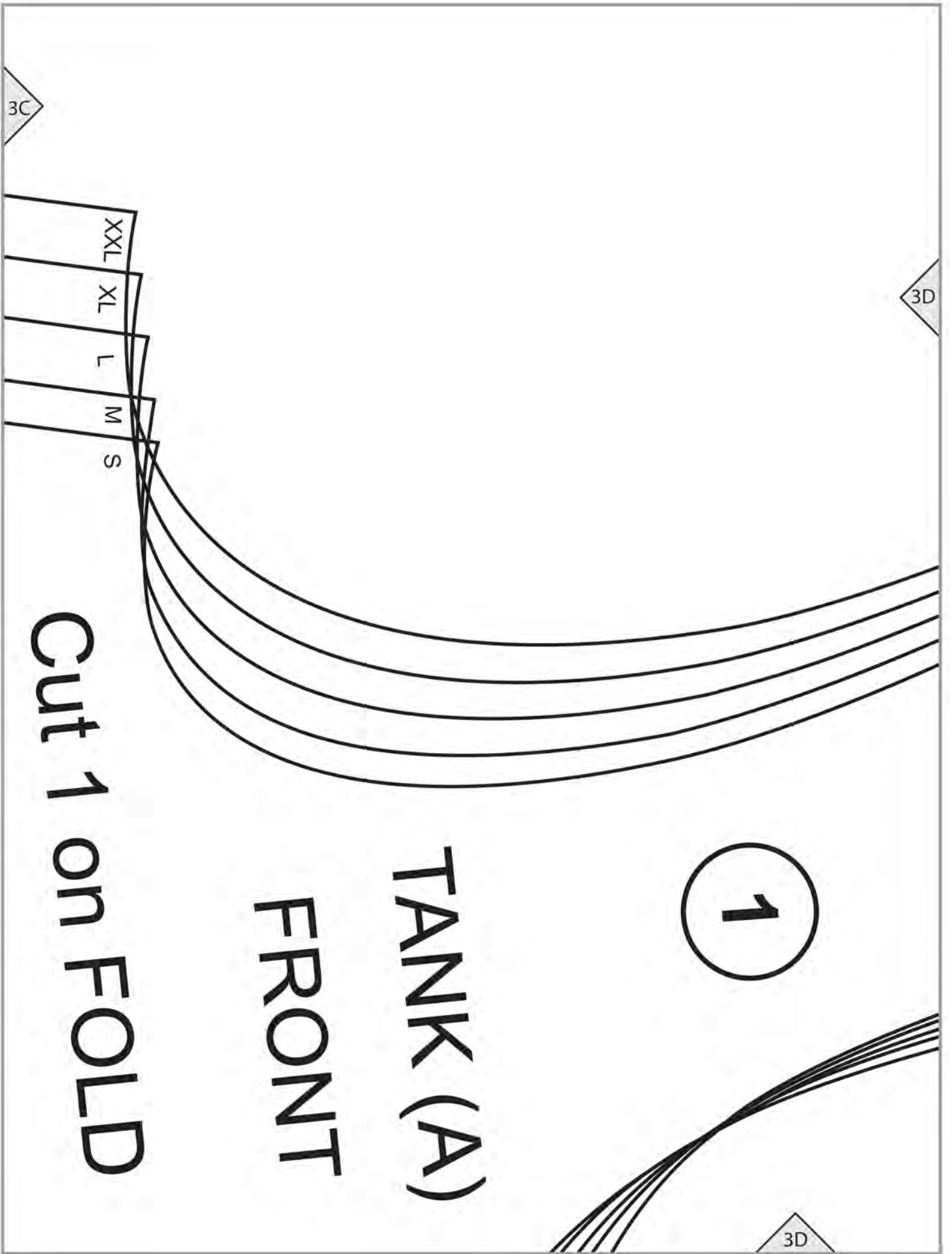
S

Cut 1 on FOLD

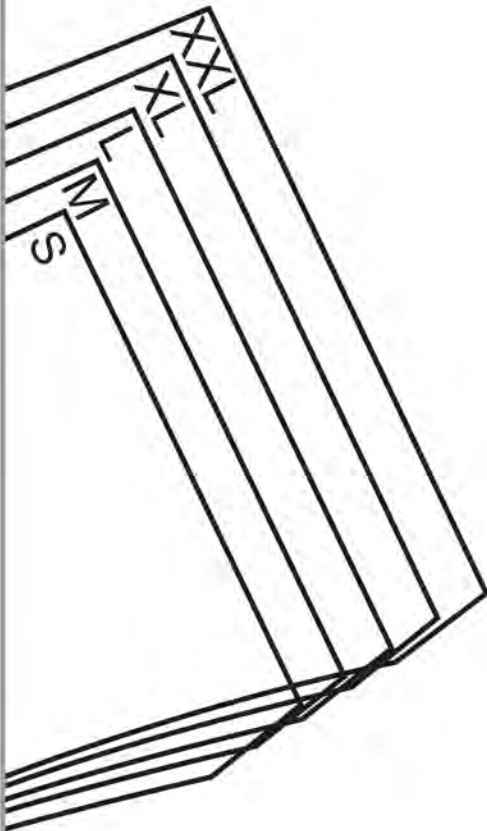
TANK (A)
FRONT

1

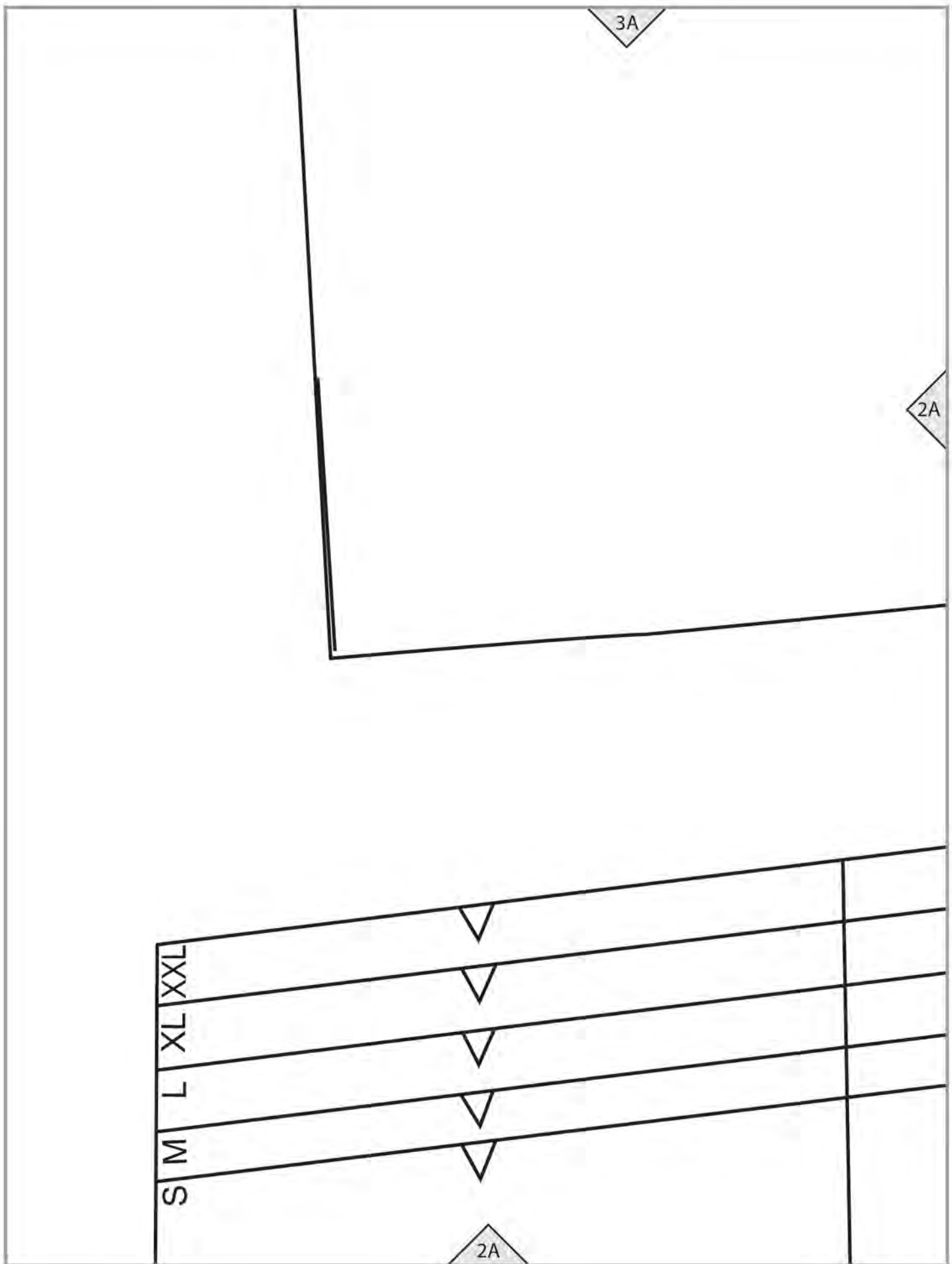
3D



3D



3E



3A

2A

XXL

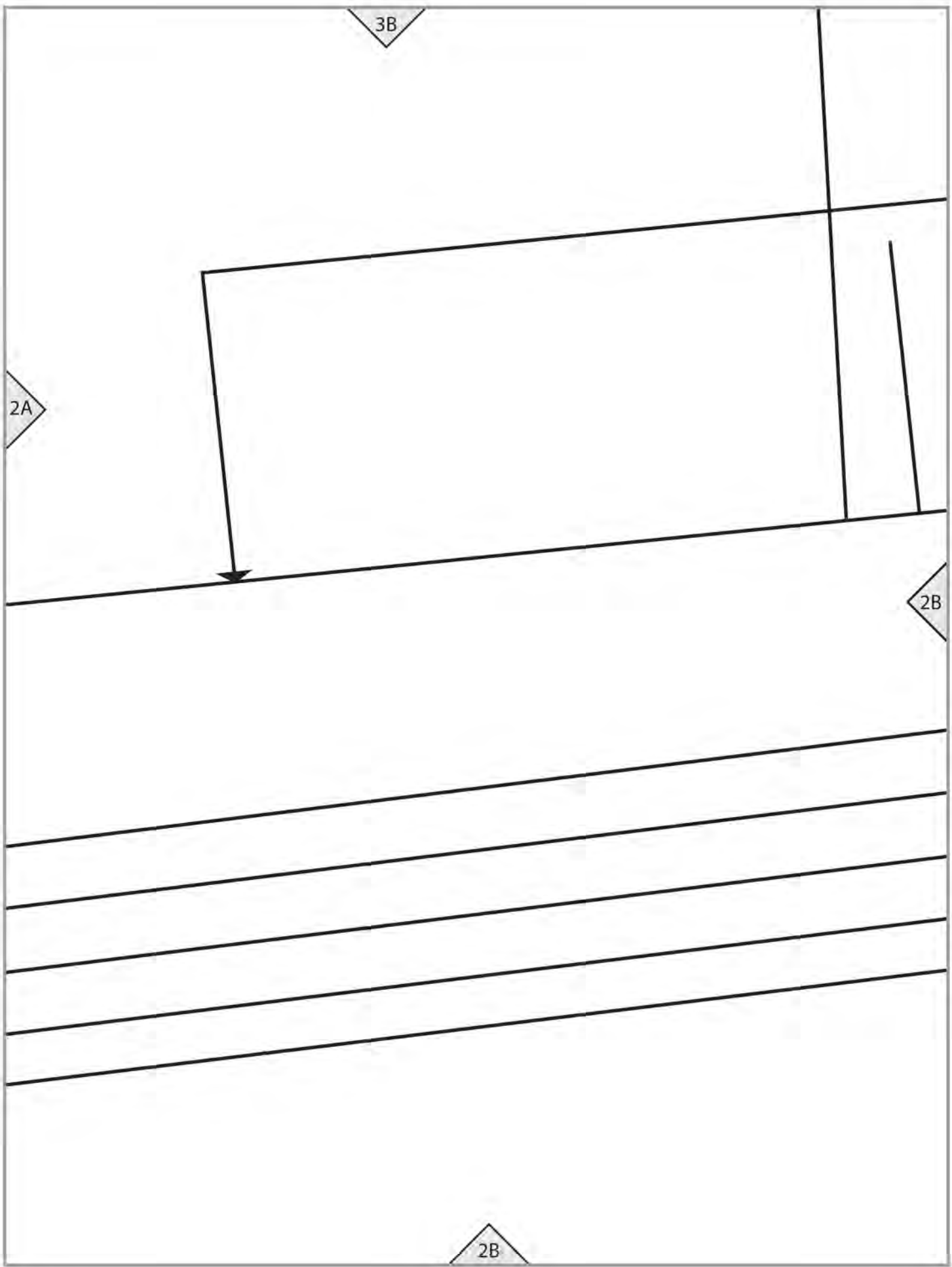
XL

L

M

S

2A



3B

2A

2B

2B

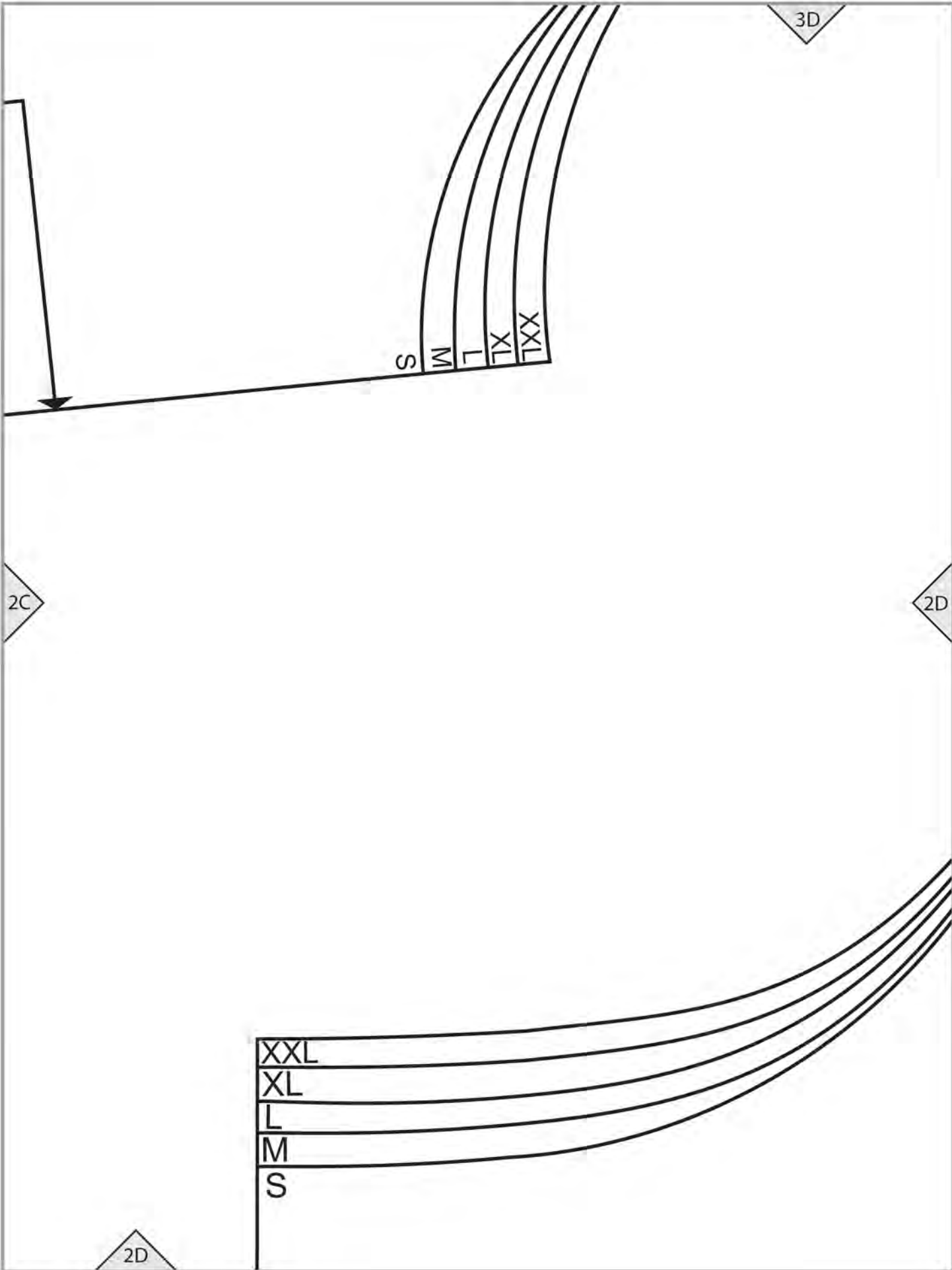
3C

- Place on FOLD

2B

2C

2C



THE **MAGIC**  **PATTERN** BOOK

BY AMY BARICKMAN

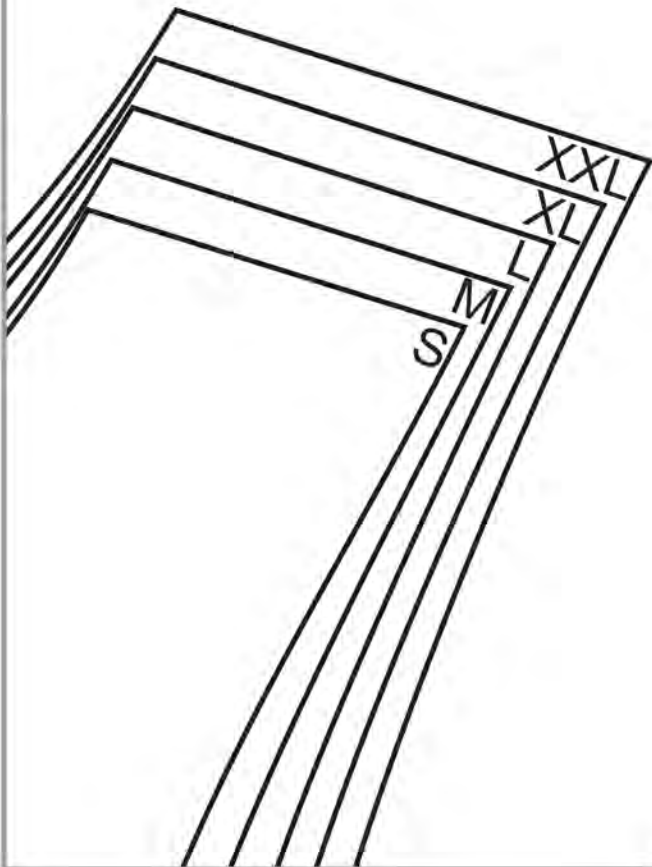
workman

workman.com

AVERY (A2)

TEST SQUARE

4" (10 cm)



TANK (A)

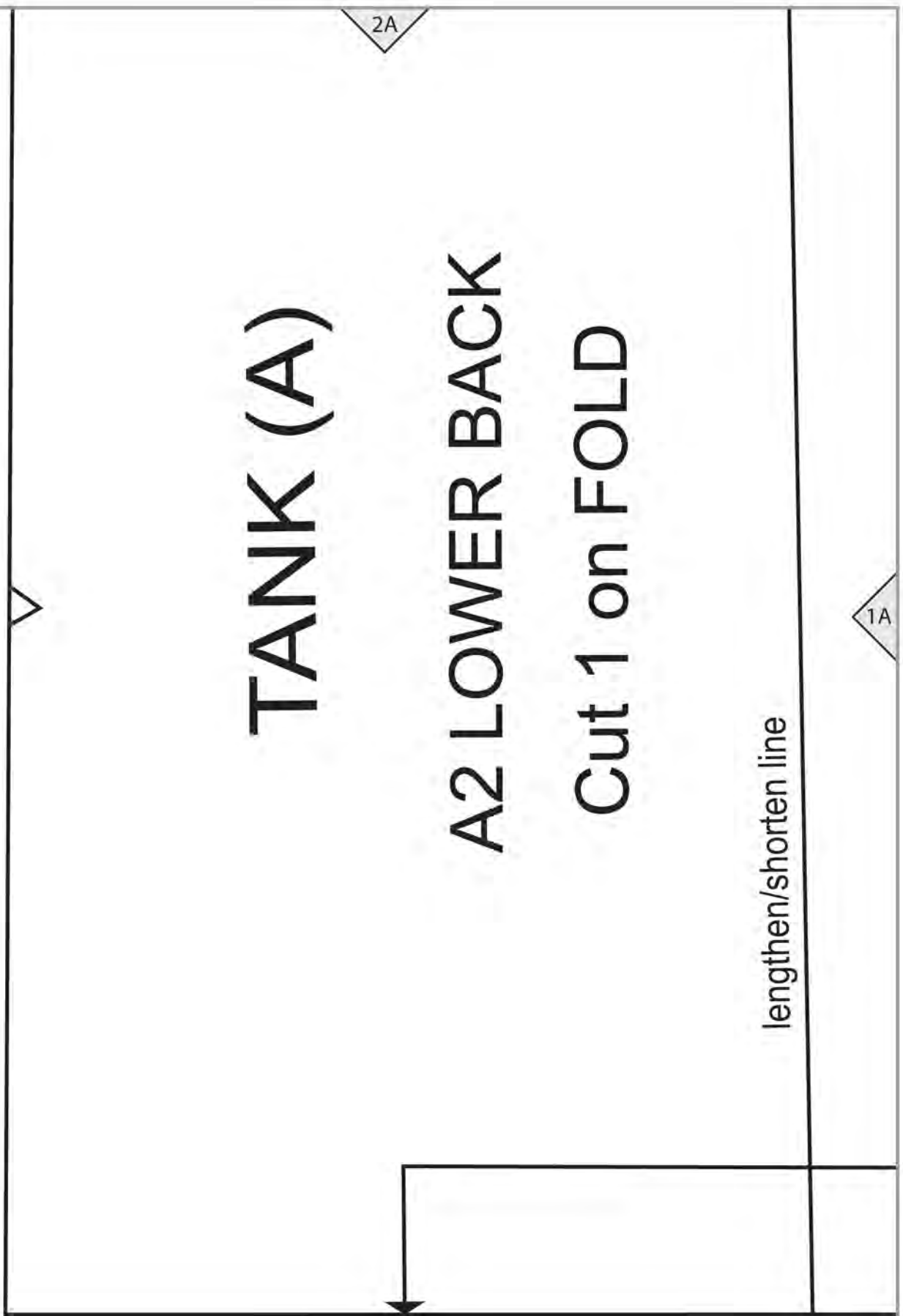
A2 LOWER BACK

Cut 1 on FOLD

lengthen/shorten line

2A

1A



2B

18

1A

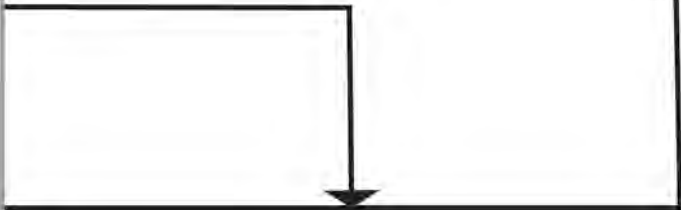
1B

Place on FOLD

2C

1B

1C



2D

TANK (A)

17

GRAINLINE

1C

1D

O XXL
O XL
O L
O M
O S

2E

1D

S M L XL XXL

A2 UPPER BACK Cut 2

