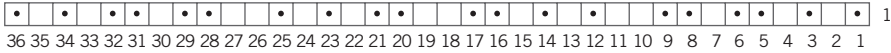


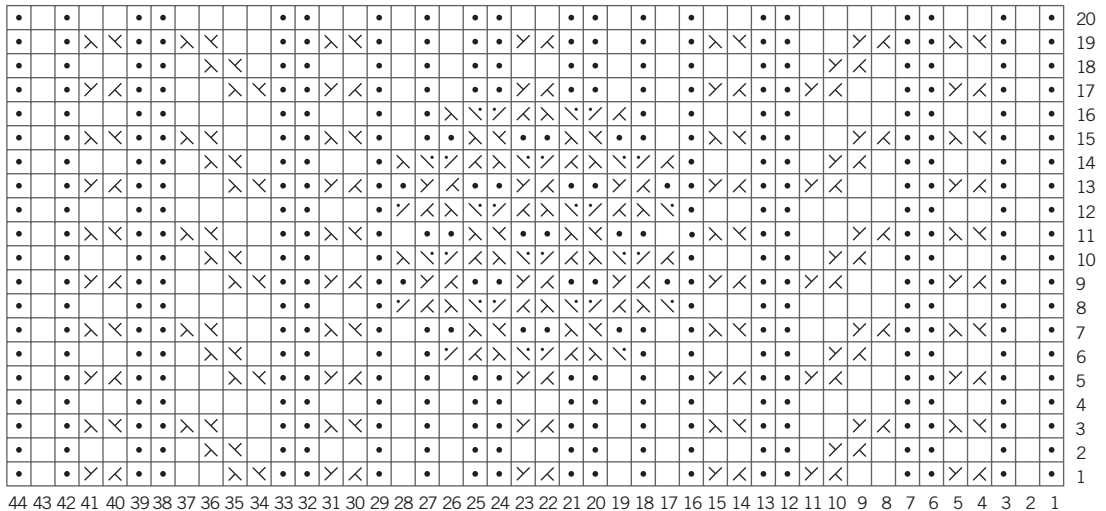
### Ballet Rib Chart for Size Small



**Key**

- Knit
- Purl

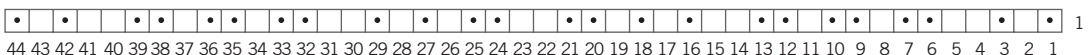
### Ballet Chart for Size Large



**Key**

- Knit
- Purl
- Right Twist. Slip 1 to cable needle and hold in back, K1, K1 from cable needle
- Left Twist. Slip 1 to cable needle and hold in front, K1, K1 from cable needle
- Left Twist, purl beginning. Slip 1 to cable needle and hold in front, P1, K1 from cable needle
- Right Twist, purl beginning. Slip 1 to cable needle and hold in back, K1, P1 from cable needle

### Ballet Rib Chart for Size Large



**Key**

- Knit
- Purl