

Finishing

Weave in ends. Sew buttons opposite buttonholes, spacing them 1"/2.5 cm apart.

Pattern Essentials

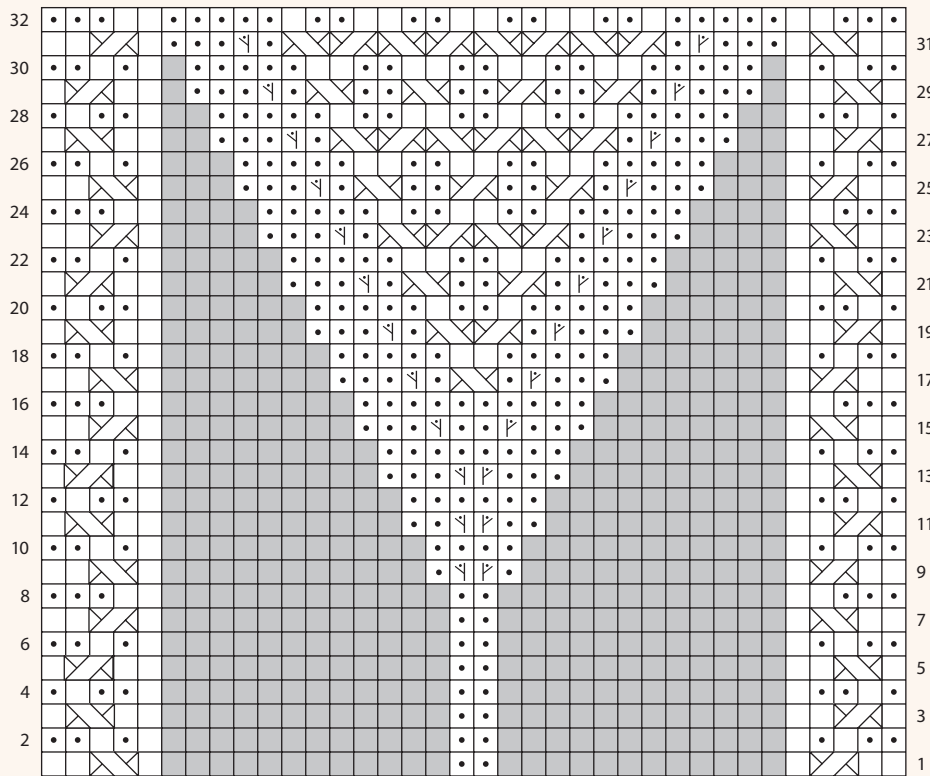
2-STITCH RIGHT CROSS

Knit the second stitch and leave it on the needle, then knit the first stitch and slip both stitches off the needle.

2-STITCH LEFT CROSS

Knit the second stitch through the back loop and leave it on the needle, then knit the first stitch and slip both stitches off the needle.

CHART A



- knit on RS rows, purl on WS rows
- purl on RS rows, knit on WS rows
- M1RP
- M1LP
- 2-stitch right cross
- 2-stitch left cross
- no stitch