

- Continue as established, working 3 border stitches, Chart A, Chart B, Chart A, and 3 border stitches as follows:
- Work Rows 1–16 of Chart A once, then work Rows 17–24 seventeen times, repeating the center 8-stitch repeat as required for the number of stitches on needle, then work Rows 25–30 and *at the same time* work Rows

1–14 of Chart B 11 times, then work Rows 15–18. *You now have 333 stitches.*

- Next Row (RS): K3, work Row 31 of Chart A, slip marker, work Row 19 of Chart B, slip marker, work Row 31 of Chart A, K3. Work one wrong-side row as established.

Finishing

- Bind off loosely on right side. Weave in ends and block firmly, pulling yarn overs along bound-off edge into points and creating a scalloped border.

CHART A

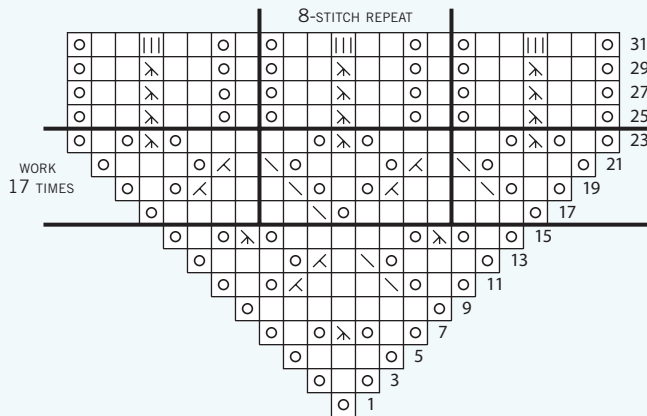
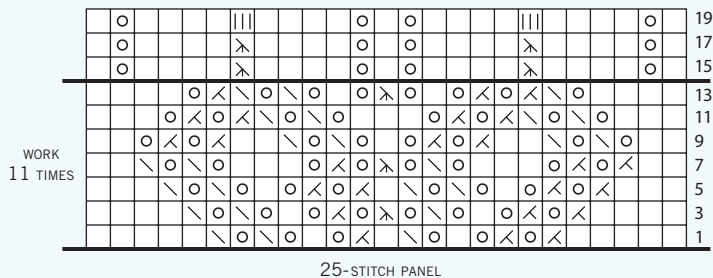








CHART B



-  knit
-  K2tog
-  yarn over
-  skp
-  sk2p
-  knit 3

Note: Only right-side rows are charted. Purl all wrong-side rows.