

Top Left

Rock On Guitar

(page 119)



Cut 2

Cut along dotted lines. Arrange as indicated and tape together to form full pattern.

cut line

cut line

Top Right

cut line

cut line

Cut along dotted lines. Arrange as indicated and tape together to form full pattern.

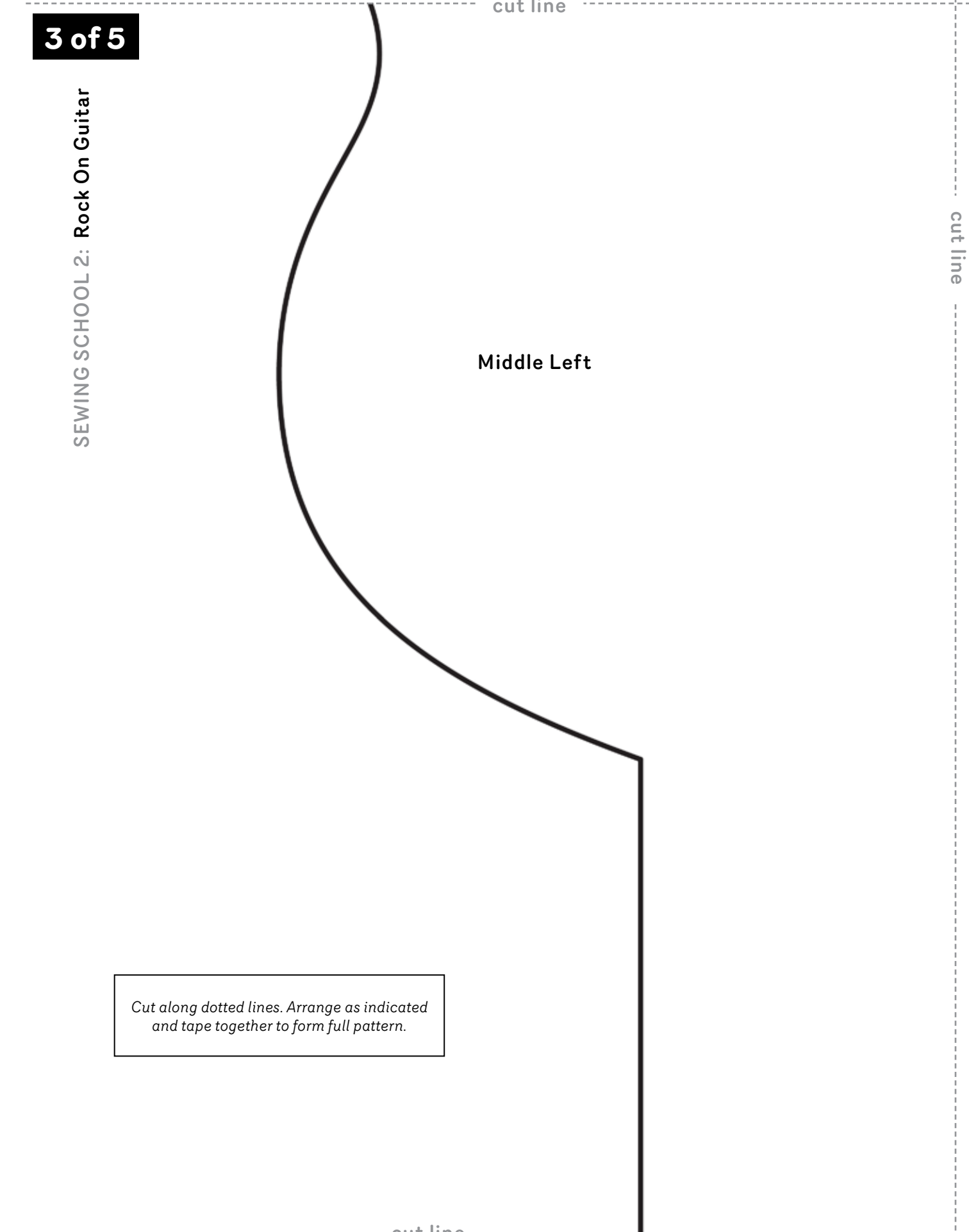
cut line

cut line

Middle Left

Cut along dotted lines. Arrange as indicated and tape together to form full pattern.

cut line



Middle Right

cut line

cut line

Cut along dotted lines. Arrange as indicated and tape together to form full pattern.

cut line

5 of 5

SEWING SCHOOL 2: Rock On Guitar

Bottom

*Cut along dotted lines. Arrange as indicated
and tape together to form full pattern.*

