

Cut along dotted lines. Arrange as indicated and tape together to form full pattern.

Top Left

# Portable Tree Stump

(page 135)



cut line

cut line

Cut along dotted lines. Arrange as indicated and tape together to form full pattern.

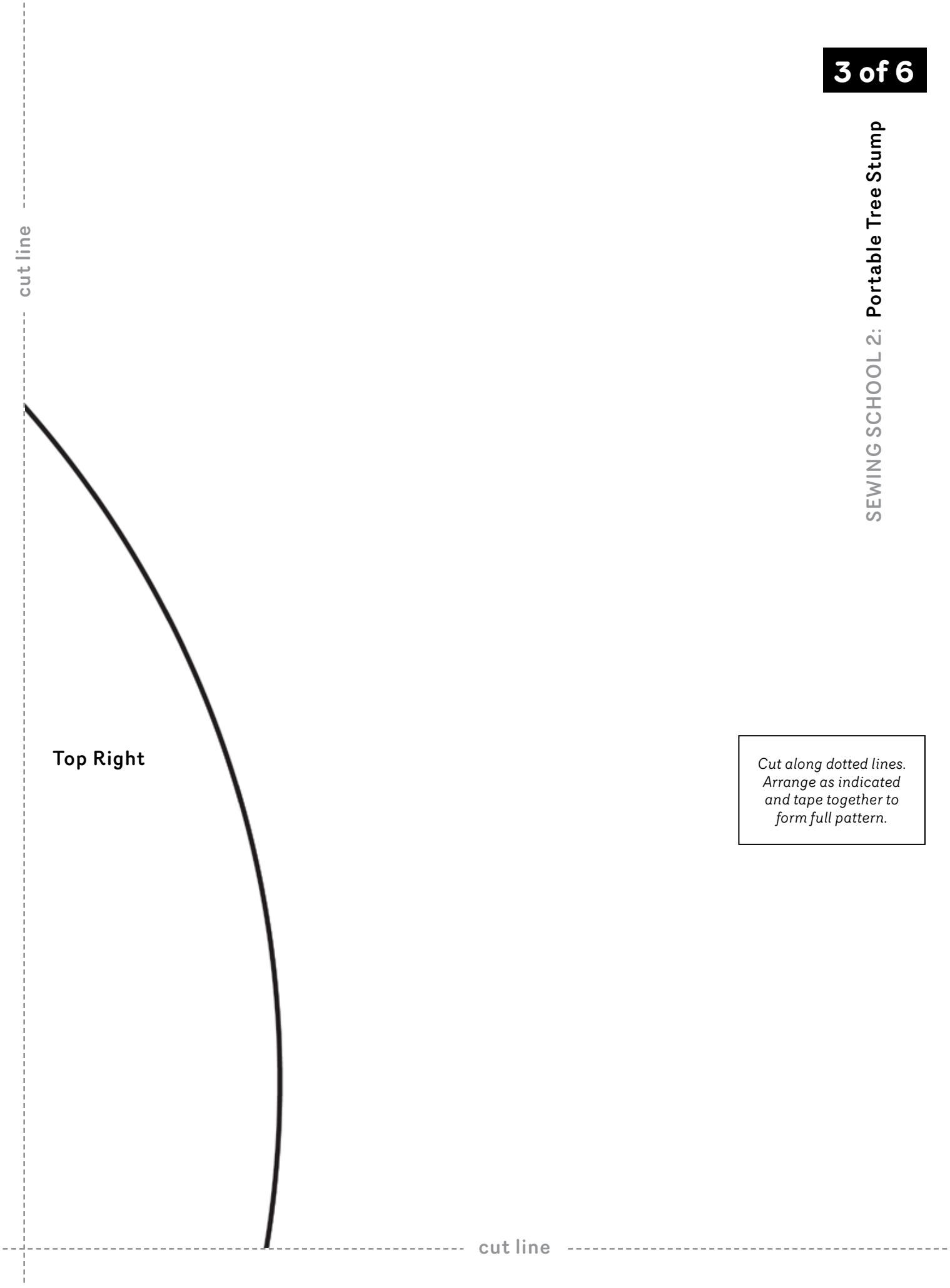
**2 of 6**

cut line

cut line

# Portable Tree Stump

cut line



Top Right

*Cut along dotted lines.  
Arrange as indicated  
and tape together to  
form full pattern.*

cut line

cut line

cut line

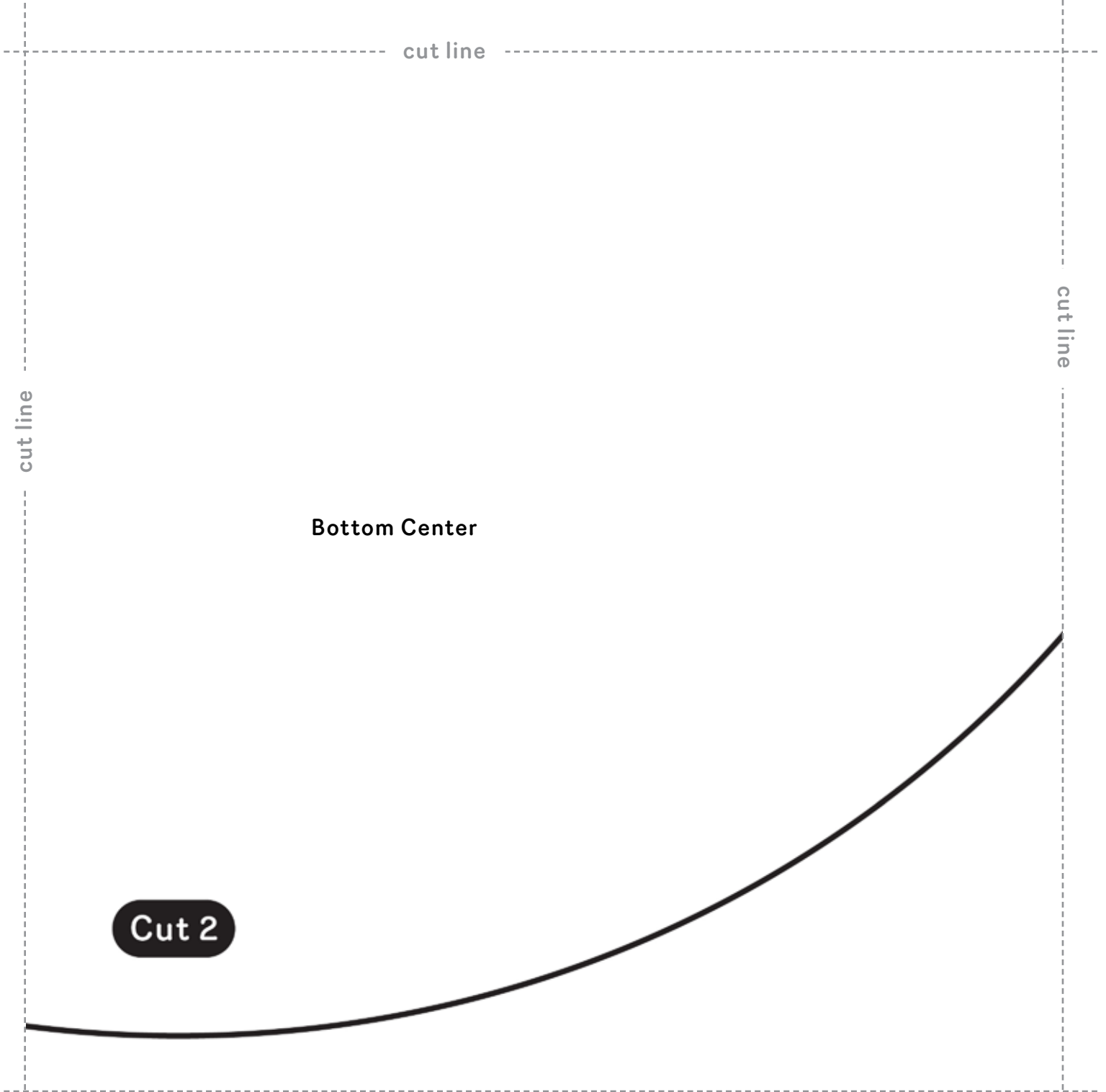
Bottom Left

cut line

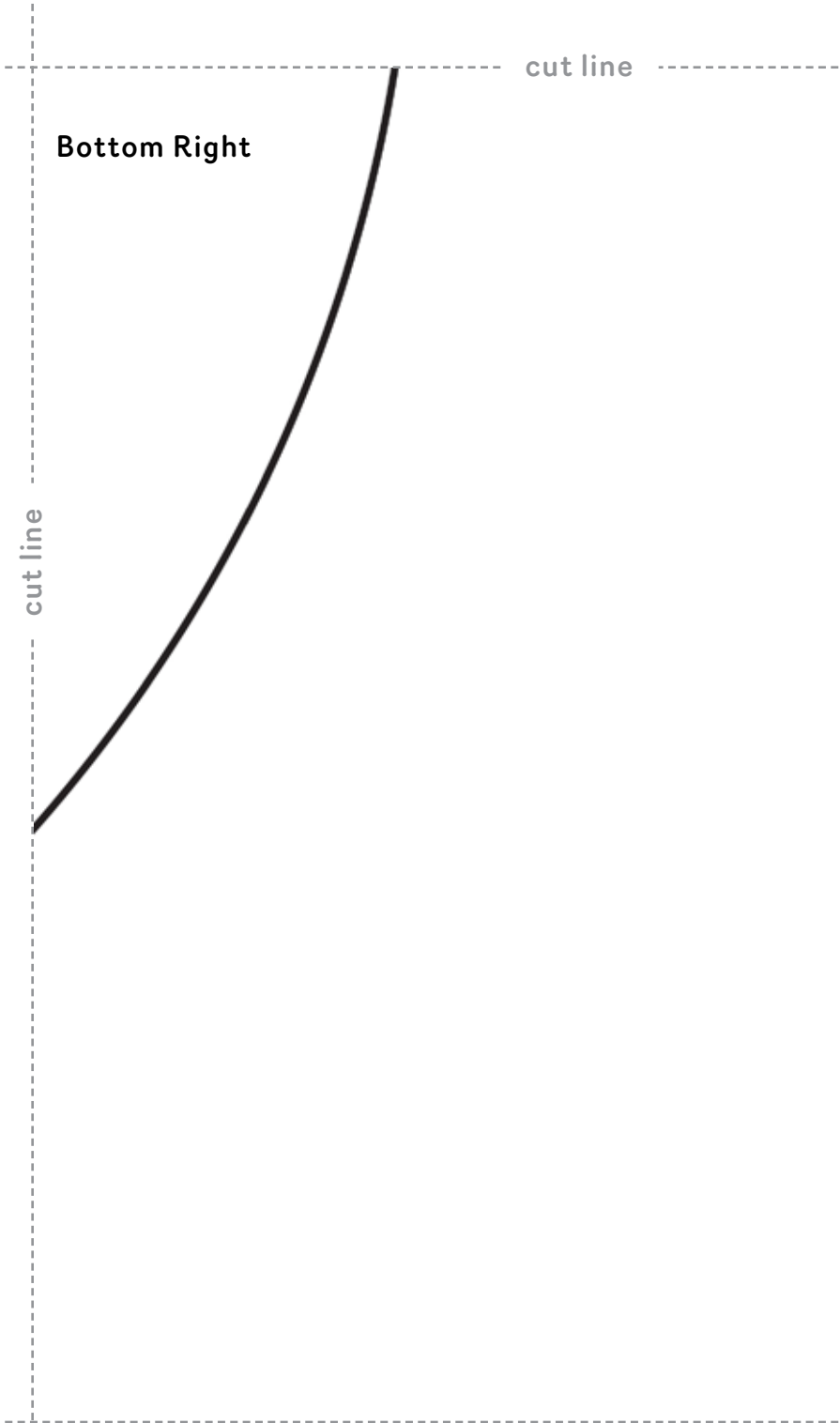
4 of 6

SEWING SCHOOL 2: Portable Tree Stump

*Cut along dotted lines.  
Arrange as indicated and  
tape together to form full  
pattern.*



*Cut along dotted lines.  
Arrange as indicated and  
tape together to form full  
pattern.*



*Cut along dotted lines.  
Arrange as indicated  
and tape together to  
form full pattern.*