

# TODDLER PINAFORE SMOCK TOP

Designed by Donna Pedaci

*The pinafore smock top is open in back and ties with a ribbon bow. It has a square neckline and empire waist. It's the perfect feminine year-round look for your little girl. Wear with pants and shirt in cold weather, over shorts or a skirt in warm weather.*

## MATERIALS

- \* Locate the pattern in the front pocket (sheet #1)
  - \* 1 yard of 44/45" fabric (quilting-weight cotton, not suitable for unidirectional fabric)
  - \* 1 spool of coordinating thread
  - \* 1½ yards of 5/8" coordinating ribbon, cut into two 27" pieces
  - \* 2 buttons (for embellishment)
- Sizes – 2T-4T  
 Seam allowance – ½" unless otherwise specified

## 1 Determine Your Child's Size

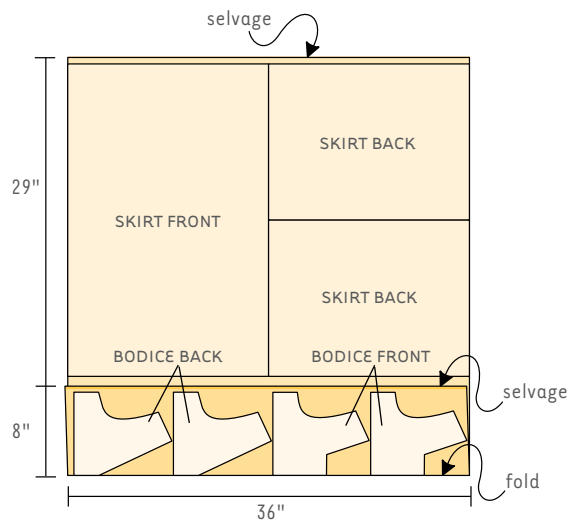
Determine which smock size you are going to make based on the child's chest size.

Toddler size	2T	3T	4T
Chest size	21"	22"	23"

## 2 Measure, Mark, and Cut

Place your fabric in a single layer with wrong side facing up, then fold one selvage end over about 7" or 8", enough to accommodate the bodice pattern pieces in the correct size. Place the pieces as shown, and measure and mark the pieces listed. Cut everything out and transfer ribbon placement markings to the wrong side of the fabric.

- \* **Bodice front** (cut 2 on fold)
- \* **Bodice back** (cut 4)
- \* **Skirt front** 28" wide × 18" tall (cut 1)
- \* **Skirt back** 14" wide × 18" tall (cut 2)



CUTTING LAYOUT

NOTE: Place "tall" dimensions and pattern pieces along the grainline of your fabric.