

Bison Shawlette

- knit on RS rows, purl on WS rows
- yarn over
- ssk
- K2tog
- slip 1, K2tog, pssso
- slip 2tog kwise, K1, p2sso

CHART C

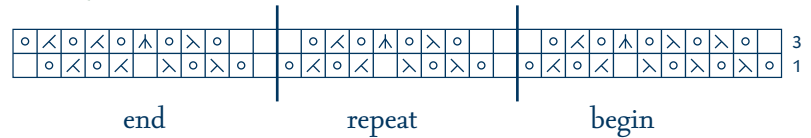


CHART B

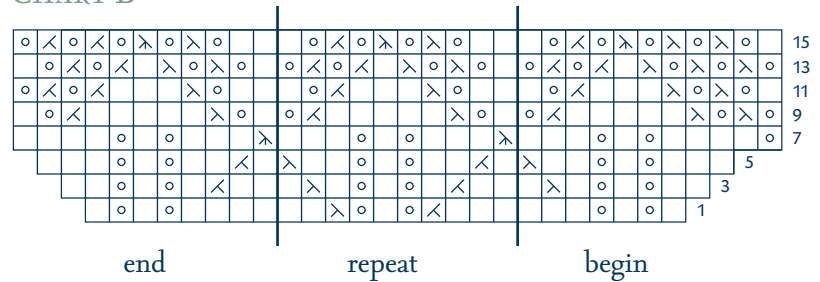
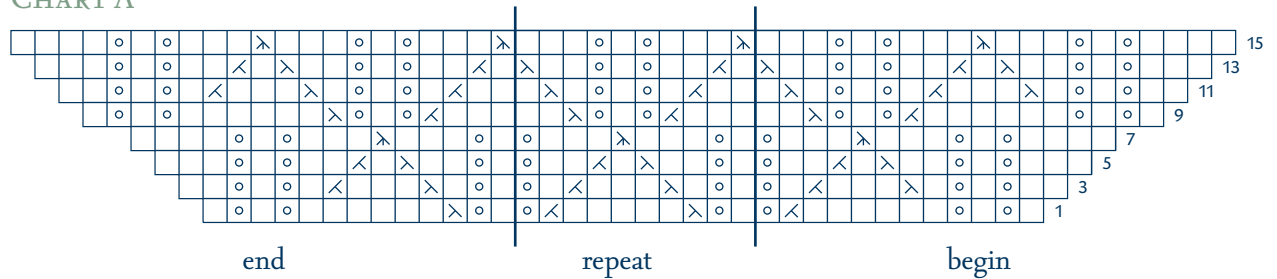
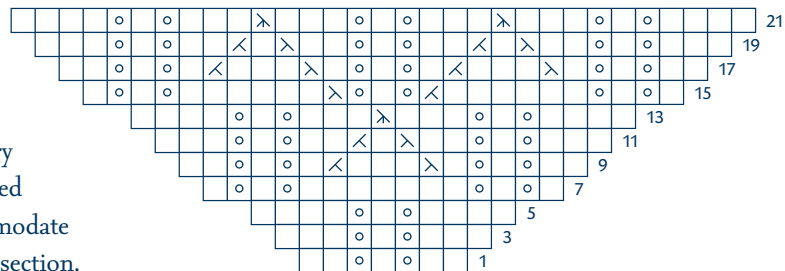


CHART A



SET UP



Note: Only RS rows are charted. Purl all WS rows.
 Work all charts 3 times for every row, working the stitches marked “repeat” as necessary to accommodate the number of stitches in each section.