

- * With RS of scarf still facing and using the same ball of yarn, cast on 5 stitches onto a double-point needle at the end of the pick-up round. Turn the work so the WS is facing you.
- * **SET-UP ROW (WS):** K4, K2tog (last edging stitch with first scarf stitch).
- * **Note:** The last edging stitch will always be worked together with 1 stitch from the edge of the scarf on even-numbered rows, with WS facing.
- * Turn the work and work Row 1 of Edging chart. Turn the work and work Row 2 of Edging chart, knitting the last stitch together with the next scarf stitch.
- * Continue in this manner until all picked-up stitches around the edge of the scarf have been worked, ending with Row 10 of Edging chart. Bind off remaining 5 edge stitches loosely.

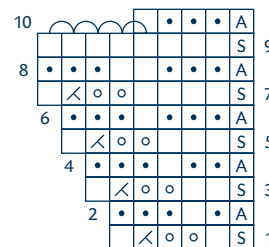
Finishing

- * Sew the bind-off and cast-on ends of the edging together neatly. Weave in ends. Block.

Sweet Violet Silk-Cashmere Scarf

- knit on RS rows, purl on WS rows
- purl on RS rows, knit on WS rows
- yarn over
- ssk
- K2tog
- slip 1, K2tog, pss0
- no stitch
- A attach edging to scarf
- S slip
- bind off

EDGING



MAIN BODY

