

Knitting the Purse

- * Cast on 73 stitches: 49 stitches for the body and 12 stitches for each side. Slipping the first stitch of every row, work Rows 1–16 of chart below 3 times.
- * Bind off 12 stitches at the beginning of the next 2 rows. Continuing in pattern as established on remaining 49 stitches, work Rows 1–16 of 49 center stitches of chart 6 more times, then work Rows 1–8 once more. Bind off in pattern.

Finishing

- * Matching the patterns carefully, sew side seams using mattress stitch with half a stitch seam allowance (see page 264).

Diamond and Crystal Cashmere Evening Bag

□ knit on RS rows, purl on WS rows

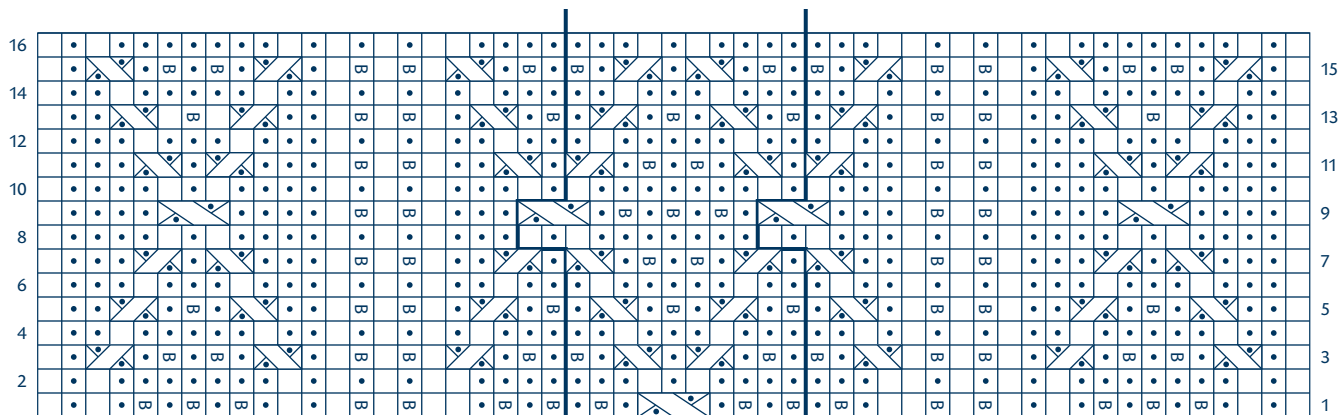
◐ purl on RS rows, knit on WS rows

◻ SB

◻ C2L

◻ C2R

◻ C3L



Work pattern
repeat 3 times