

## It's Got a Bend in It!

Ripple and chevron patterns bend the straight stripes of longer color segments into Vs and curves and, at the same time, add surface texture. The ripple and chevron patterns in chapter 3 lend themselves nicely to multicolor yarns without the necessity of changing colors. Yarns with longer color segments show the structure of the pattern best, while yarns with shorter stretches of each color simply appear more interesting because the stitches tilt to one side or the other, are partially obscured by decreases, and appear as small dots of color in increases.

## Vine Lace

Simply shifting the pattern from Row 2 one stitch to the right on Row 4 staggers the increases and decreases, creating the undulating chevron pattern in Vine Lace (shown below).

**Stitches:** Multiple of 9, plus 4

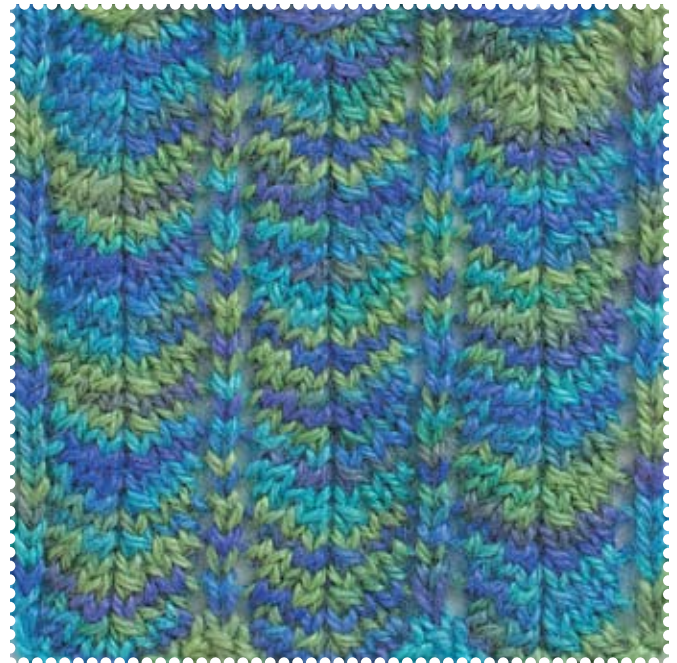
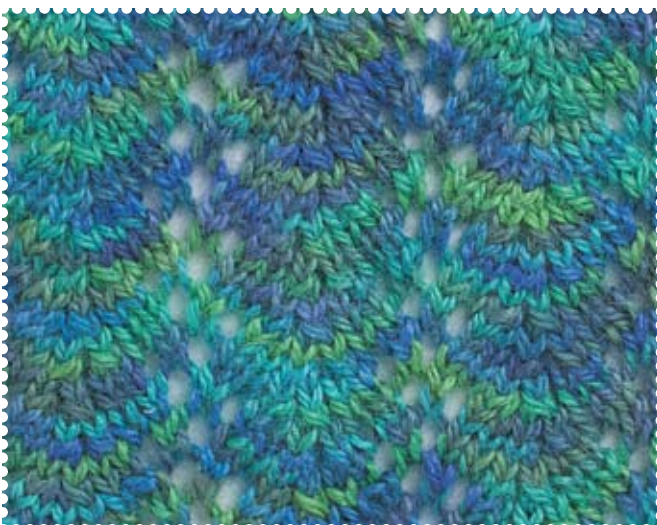
### CAST ON LOOSELY.

**ROW 1 (WS):** Purl.

**ROW 2:** K2, \* K1, yo, K2, ssk, K2tog, K2, yo; repeat from \*, end K2.

**ROW 3:** Purl.

**ROW 4:** K2, \*yo, K2, ssk, K2tog, K2, yo, K1; repeat from \*, end K2.

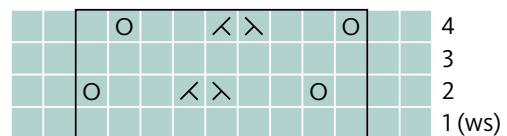


## Variation

**Stitches:** Multiple of 9, plus 4

- » To make Feather Lace, loosely cast on and then work just Rows 3–4 (ending with a K1 instead of a K2). This produces a very tailored vertical lace pattern with a pronounced grain to the “feathers.”

### Vine Lace



#### Stitch Key

□ K on RS, P on WS

○ yo

⊗ ssk: slip knitwise, slip knitwise, knit the slipped stitches together

∧ K2tog