

Trellis Leaf Stole

DESIGNED BY JUDITH DURANT



Faced with an irresistible hank of Madelinetosh yarn, the challenge here was to find a lace pattern that would make the most of the yards available. The very open Trellis Framed Leaf pattern from Barbara Walker's Treasury of Knitting Patterns (Schoolhouse Press, 1998) did the trick and allowed for a stole ample enough to fully wrap the shoulders.

Finished Measurements

Approximately 61"/155 cm wide and 15"/38 cm deep

Yarn

Madelinetosh Prairie, 100% superwash merino wool, 840 yds (768 m)/4.2 oz (120 g), Charcoal

Note: The yarn label states that the skein weighs 100 g; it actually weighed 120 g, and every bit was used.

Needles

US 2½ (3 mm) straight needles *or size you need to obtain correct gauge*

Gauge

27 stitches and 34 rows = 4"/10 cm in Trellis Leaf Lace pattern, blocked

Other Supplies

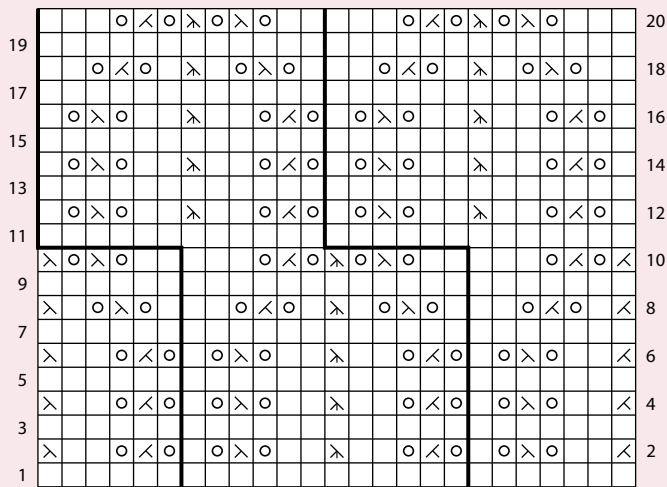
Yarn needle, stitch holder

PATTERN NOTES



All but approximately 12"/30.5 cm of the yarn was used. If you doubt your yardage, knit fewer repeats in each half or work the stole in a single piece from one end to the other.

Trellis Leaf Lace



12-stitch repeat

Work 7 times.

□ k on RS, p on WS

○ yo

⋈ k2tog

⋈ s2kp

⊗ ssk