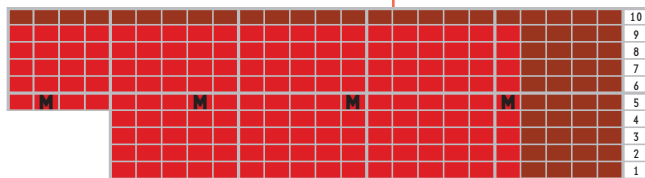


Chart D



■ A
 ■ B
 ■ M Make 1

Directions for Beer Bottle

Note: Unless otherwise noted, Wool-Ease and Vanna's Choice are worked holding 2 strands together.

With 2 strands E, CO 16 sts.

Rows 1–4 Work in St st, beg with a k row.

Rows 5–14 With A, work in St st.

Row 15 [K4, m1] 3 times, k3, m1, k1—20 sts.

Row 16 Purl.

Rows 17–26 Work 10 rows of Chart D—24 sts.

Row 27 With A, [k6, m1] 3 times, k5, m1, k1—28 sts.

Rows 28–32 Work even in St st.

Row 33 [K7, m1] 3 times, k6, m1, k1—32 sts.

Rows 34–36 Work even in St st.

Row 37 [K3, m1] 10 times, k2—42 sts.

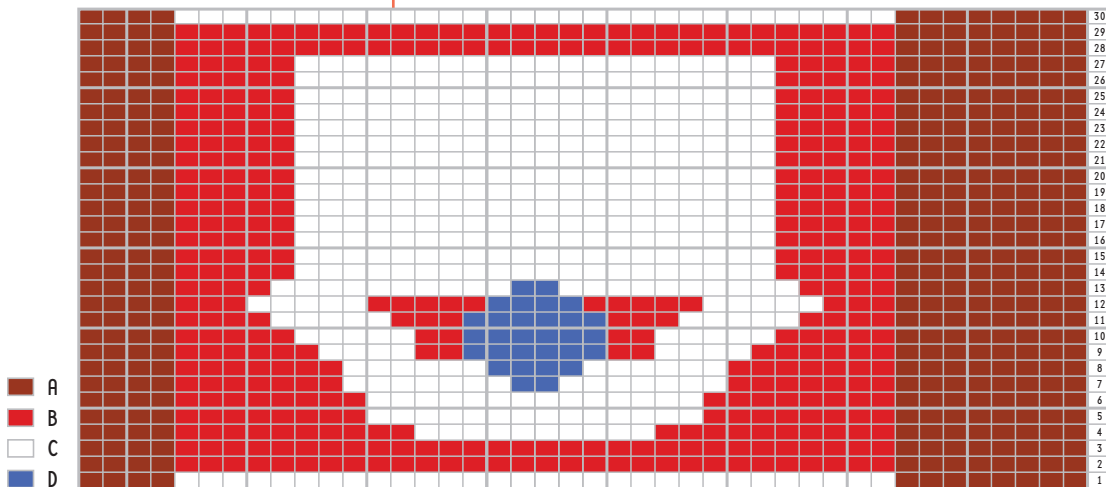
Rows 38–42 Work even in St st.

Rows 43–72 Work 30 rows of Chart E.

Rows 73–88 With A, work even in St st.

BO.

Chart E



■ A
 ■ B
 ■ C
 ■ D