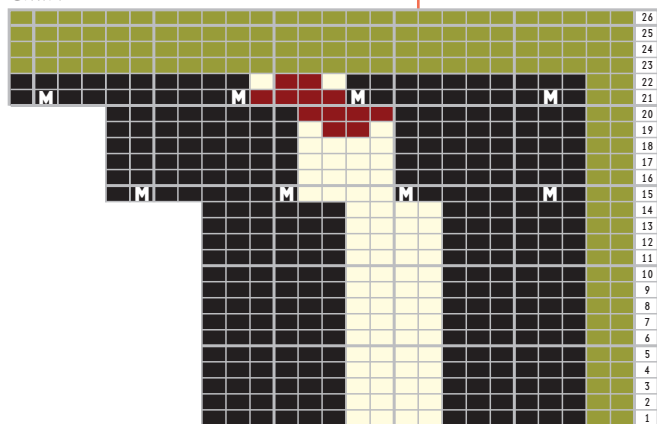


Chart A



- A
- B
- C
- D
- Make 1

Directions for Whiskey Bottle

Note: Unless otherwise noted, Wool-Ease is worked with 2 strands held together.

With 2 strands B, CO 18 sts.

Rows 1–6 Work in St st, beg with a k row.

Rows 7–8 Change to 1 strand A, work in St st.

Rows 9–34 Work 26 rows of Chart A—26 sts.

Row 35 With A, [k6, m1] 4 times, k2—30 sts.

Rows 36–38 Work even in St st.

Row 39 [K7, m1] 4 times, k2—34 sts.

Row 40 Purl.

Row 41 [K2, m1] 16 times, k2—50 sts.

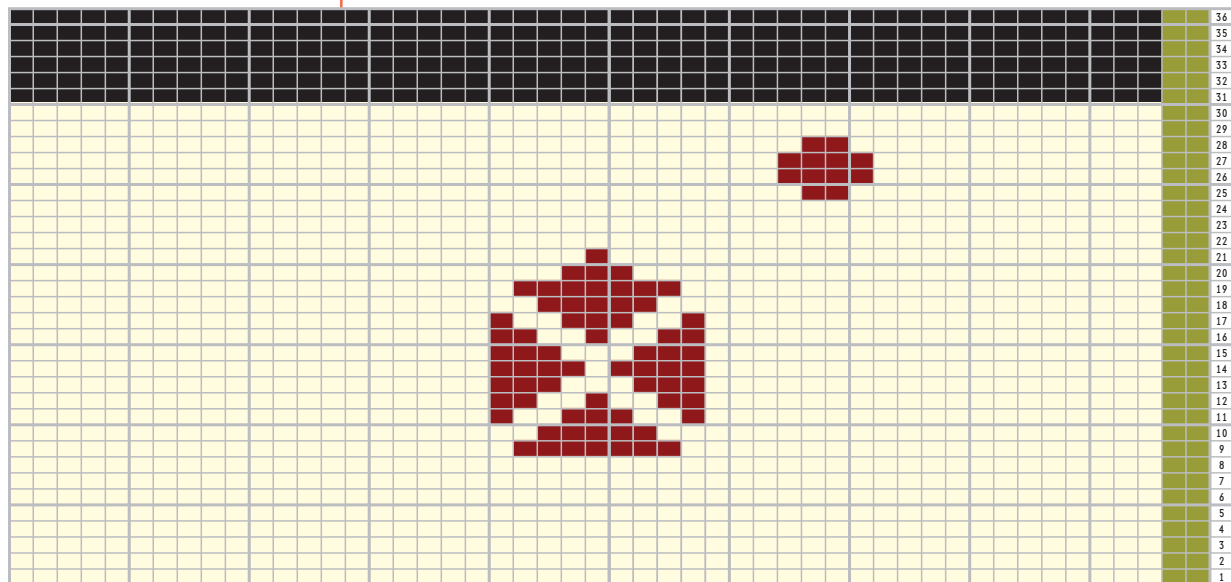
Rows 42–48 Work even in St st.

Rows 49–78 Work 36 rows of Chart B.

Rows 79–94 Work even in St st.

BO.

Chart B



- A
- B
- C
- D