

Row 1 (RS): Ch 4 (counts as dc, ch 1), dc in first sc (counts as first V-st), *ch 2, sk next 3 sc, sc in each of next 2 sc, ch 2, sk next 3 sc, V-st in next sc; rep from * across, turn—7 (9, 11, 13) V-sts.

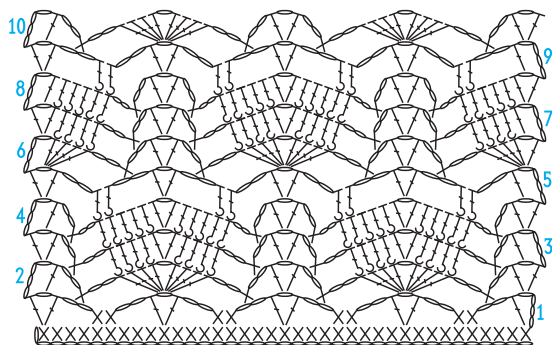
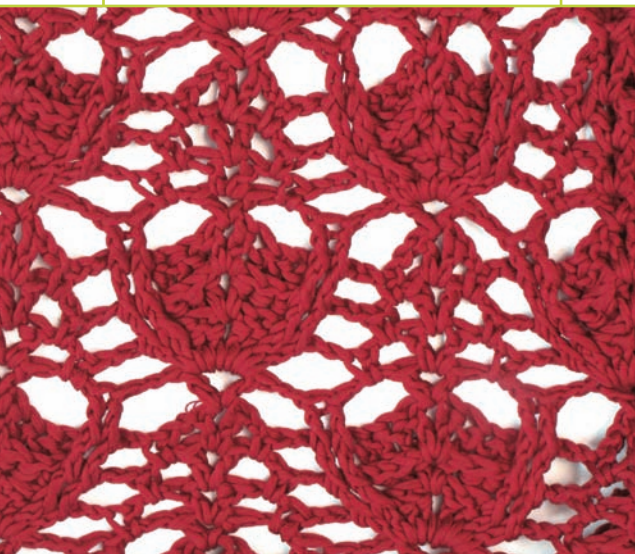
Row 2: Ch 4 (counts as dc, ch 1), dc in first ch-1 space (counts as first V-st), *ch 2, sc in next ch-2 space, ch 2, sk next ch-2 space, (4 dc, ch 1, 4 dc) in next ch-1 space of V-st (shell made), ch 2, sk next ch-2 space, sc in next ch-2 space, ch 2, V-st in ch-1 space of next V-st; rep from * across, turn—3 (4, 5, 6) shells.

Row 3: Ch 4 (counts as dc, ch 1), dc in first ch-1 space (counts as first V-st), *ch 2, sc in next ch-2 space, ch 2, sk next ch-2 space, FPdc around the post of each of next 2 dc, BPdc around the post of each of next 2 dc, V-st in next ch-1 space, BPdc around the post of each of next 2 dc, FPdc around the post of each of next 2 dc, ch 2, sk next ch-2 space, sc in next ch-2 space, ch 2, V-st in ch-1 space of next V-st; rep from * across, turn—3 (4, 5, 6) relief shell patterns.

Row 4: Ch 4 (counts as dc, ch 1), dc in first ch-1 space (counts as first V-st), *ch 2, sc in next ch-2 space, ch 2, sk next ch-2 space, BPdc around the post of each of next 2 dc, FPdc around the post of each of next 3 dc, V-st in next ch-1 space, FPdc around the post of each of next 3 dc, BPdc around the post of each of next 2 dc, ch 2, sk next ch-2 space, sc in next ch-2 space, ch 2, V-st in ch-1 space of next V-st; rep from * across, turn—3 (4, 5, 6) relief shell patterns.

Row 5: Ch 4 (counts as dc, ch 1), dc in first ch-1 space (counts as first V-st), *ch 2, sk next 2 ch-2 spaces, FPdc around the post of each of next 2 dc, ch 2, sk next 4 dc, V-st in next ch-1 space, ch 2, sk next 4 dc, FPdc around the post of each of next 2 dc, ch 2, sk next 2 ch-2 spaces, V-st in ch-1 space of next V-st; rep from * across, turn—3 (4, 5, 6) relief shell patterns.

Row 6: Ch 4 (counts as dc, ch 1), 4 dc in first ch-1 space (counts as first half shell), *ch 2, sk next ch-2 space, sc in next ch-2 space, ch 2, V-st in ch-1 space of next V-st, ch 2, sc in next ch-2 space, ch 2, sk next ch-2 space, (4 dc, ch 1, 4 dc) in ch-1 space of next V-st (shell made); rep from * across, ending with (4 dc, ch 1, dc) in last ch-1 space (half shell made), turn—2 (3, 4, 5) shells + 2 half shells.



Reduced sample of pattern