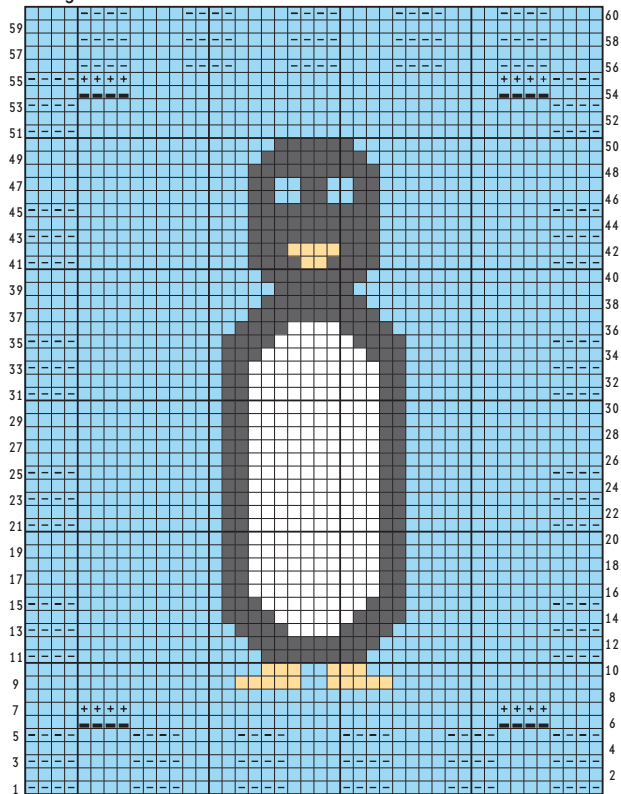


Penguin Chart



- Color E
- Color G
- Color F
- Color I
- P on RS, K on WS
- Bind off
- Cast on

21) sts. Work even until front meas same as back, end with a WS row. BO all sts.

SLEEVES (MAKE 2)

With smaller needles and A, CO 40 (44, 48, 52, 56) sts.

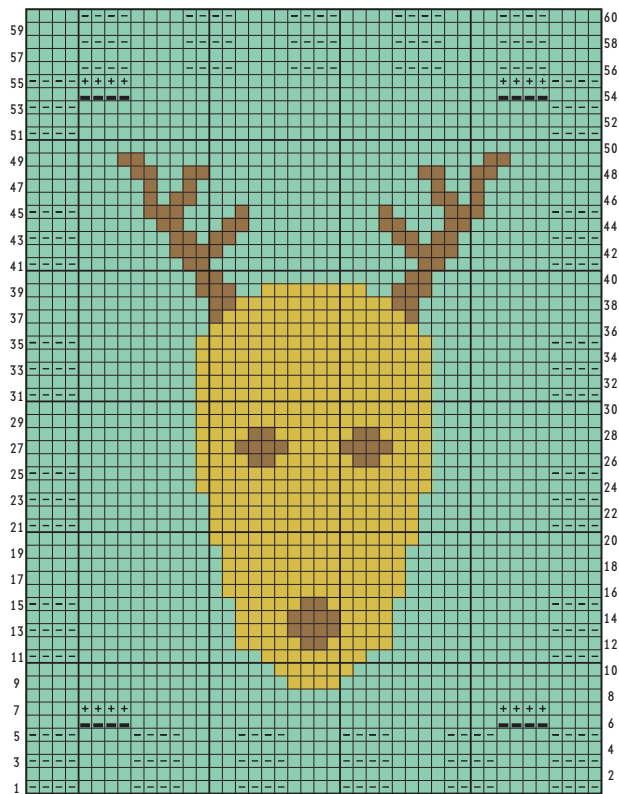
Work 8 rows in St st, end with a WS row.

Work 6 rows in k2, p2 rib.

Change to larger needles and St st.

INC ROW (RS): K2, m1, k to last 2 sts, m1, k2.

Reindeer Chart



- Color K
- Color J
- Color C
- P on RS, K on WS
- Bind off
- Cast on

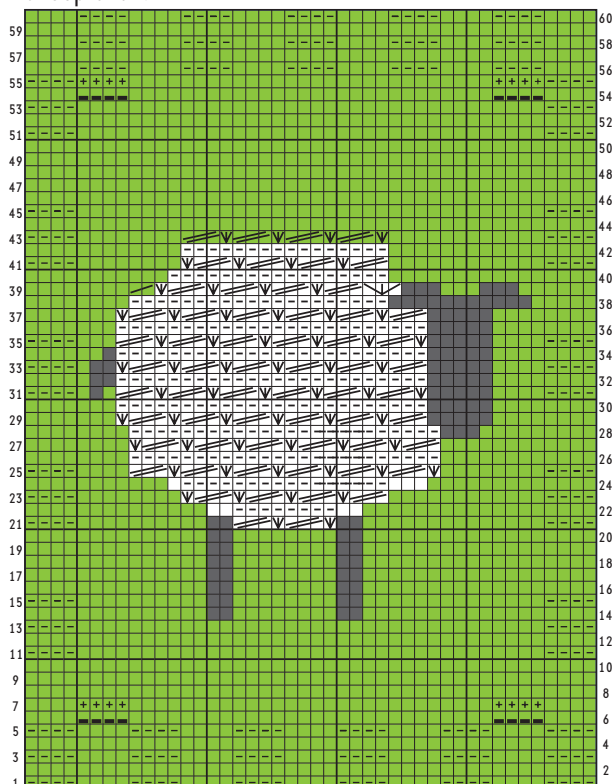
Cont to inc every 4th row 10 times more—62 (66, 70, 74, 78) sts. Work even until piece meas 6½ (7½, 8½, 9½, 10½)" from top of rib. BO all sts.

ANIMAL MOTIFS

With smaller needles and background color for motif, CO 44 sts. Start with a WS row at bottom left of chart; change to larger needles on row 6 and back to smaller needles on row 56.

When chart is complete, BO all sts.

Sheep Chart



■ Color H

■ Color G

□ Color F

□ P on RS, K on WS

■ Bind off

□ Cast on

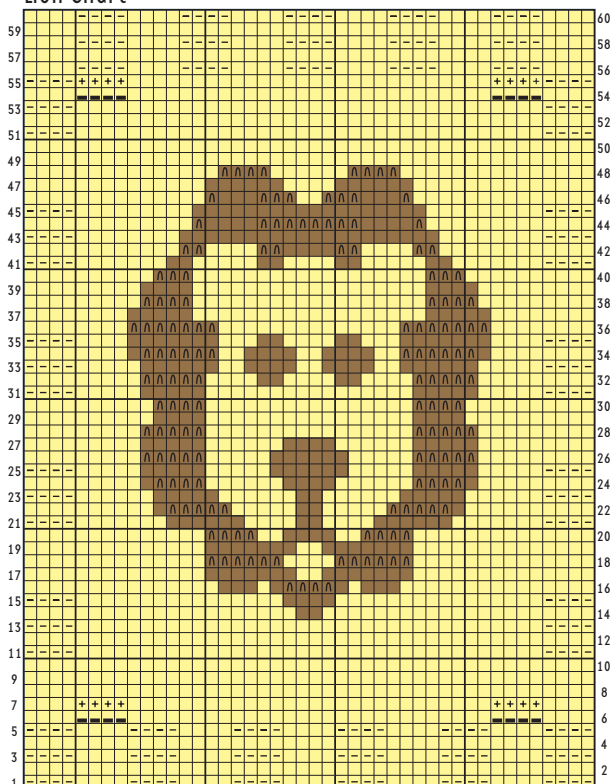
▽ (K1, p1, k1) into same st

▨ P3tog on WS

▧ (K1, p1, k1) into same st

▨ P2tog on WS

Lion Chart



■ Color B

■ Color C

■ Color D

□ P on RS, K on WS

■ Bind off

□ Cast on

▧ Loop st

EMBELLISHMENTS

PENGUIN

Right wing

With larger needles and G, CO 7 sts.

ROW 1 (RS): Knit.

ROW 2 AND ALL WS ROWS: Purl.

ROW 3: K1, ssk, k to last st, M1R, k1.

ROWS 4–27: Rep rows 2 and 3.

ROW 28: Purl.

ROW 29: K1, ssk, k1, k2tog, k1.

BO wise, leaving a 6" tail.