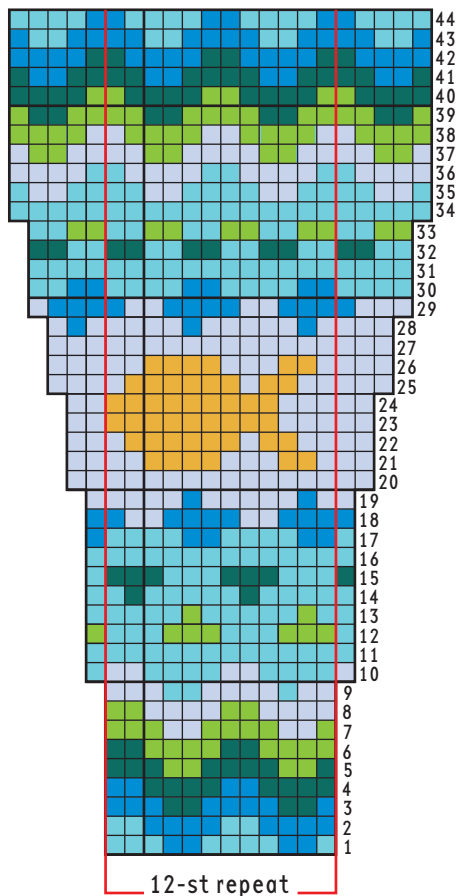
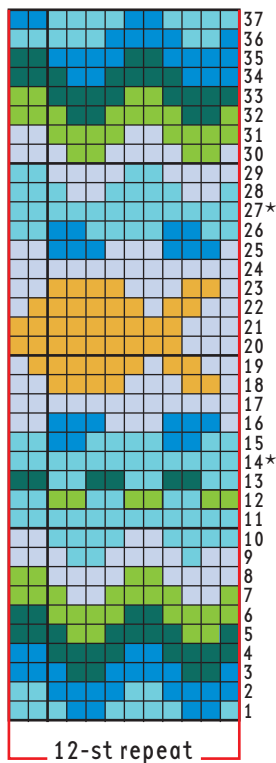


Sleeve Chart



Yoke Chart



- Color A
- Color B
- Color C
- Color D
- Color E
- Color F

\*dec rnds

Note: After yoke dec rnds, stitches may not be vertically aligned in same manner as shown on chart.

## BACK

NEXT ROW (RS): K2tog, k to last 2 sts, ssk.

NEXT ROW: Purl.

Rep last 2 rows twice more—75 (87, 99, 109, 121) sts.  
Place back sts onto holder.

## FRONT

With RS facing, join yarn and work same as back.

## SLEEVES

With smaller dpns and A, cast on 52 (52, 64, 64, 64) sts.  
Pm for beg of rnd and join; p1, [k2, p2] 12 (12, 15, 15, 15) times, k2, p1. Cont in rib as est for 1¾".

INC RND: P1, kfb, rib as est to last 2 sts, kfb, p1 (work all inc sts into rib patt).

Rep inc rnd every 6 rnds 3 times more—60 (60, 72, 72, 72) sts. Work even in rib until sleeve meas 5" from beg. K 3 rnds.

Change to larger dpns and work 44 rnds of Sleeve Chart, inc 1 st at beg and end of rnds 10, 20, 25, 29 and 34—70 (70, 82, 82, 82) sts.

Change to smaller dpns and cont in St st with A only, rep inc rnd every 8th rnd 0 (2, 0, 2, 3) times—70 (74, 82, 86, 88) sts. Work even until sleeve meas 18½" from beg.

NEXT RND: K to last 5 (5, 5, 6, 6) sts; place next 10 (10, 10, 12, 12) sts on wy for underarm—60 (64, 72, 74, 76) sts. Turn.