

Chart 1

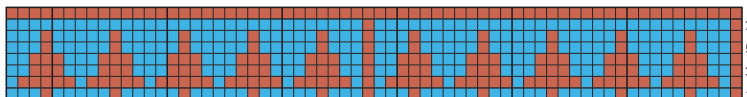


Chart 2

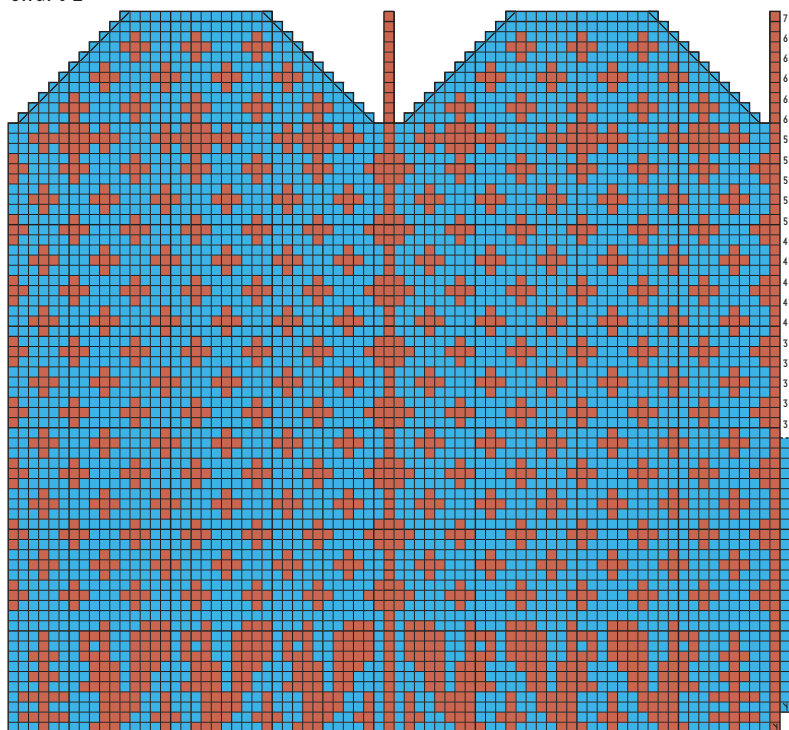
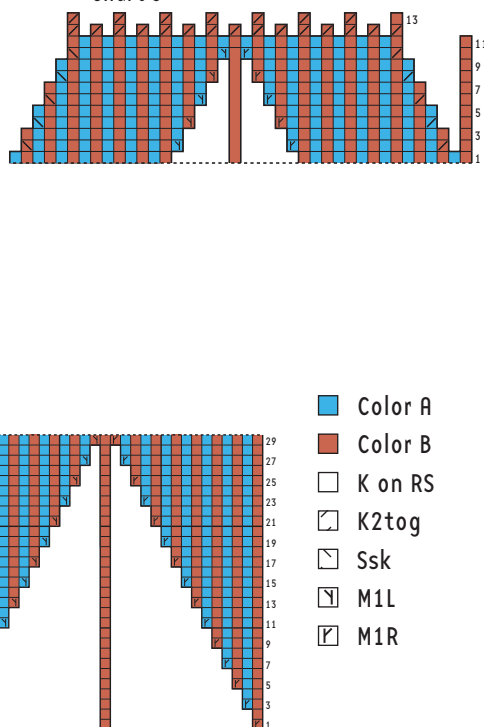


Chart 3



- Color A
- Color B
- K on RS
- ◻ K2tog
- ◻ Ssk
- ◻ M1L
- ◻ M1R

NEXT RND (INC): With CC, *[k4, kfb] twice, k5, kfb; rep from * 3 times more—76 sts.

HAND

Begin Chart 2, AND AT THE SAME TIME, beg inc for thumb as charted. **Note:** Inc's are worked on either side of first st in rnd.

RND 30: Work to thumb; transfer 30 thumb sts to wy, work rem of rnd as charted.

Complete Chart 2, dec as indicated. With CC, graft rem sts together with Kitchener st.

THUMB

Distribute thumb sts evenly over 4 needles. Pm and join MC and CC between thumb and hand, leaving a 6" CC tail for sewing up. Work thumb in the rnd foll Chart 3.

When chart is completed, break yarn, leaving a 6" tail.

Thread tail through rem sts, pull tight to close end and secure.

FINISHING

With CC tail, sew gap between thumb and hand closed. Weave in ends.

Make second mitten same as first mitten.

ABOUT ELLI Descended from good Dutch-American folk who instilled hardworking and crafty values in me from an early age, I grew up to be a cartographer with a great fondness for designing colorwork mittens. I live in Bloomington, Indiana, where my current passions include genealogy, pirate LEGOs, praying mantises, and wearing foofy dresses. My husband facilitates domestic bliss by choosing not to comment on the yarn situation. The blog, Elliphantom Knits, can be found at www.elliphantom.com.