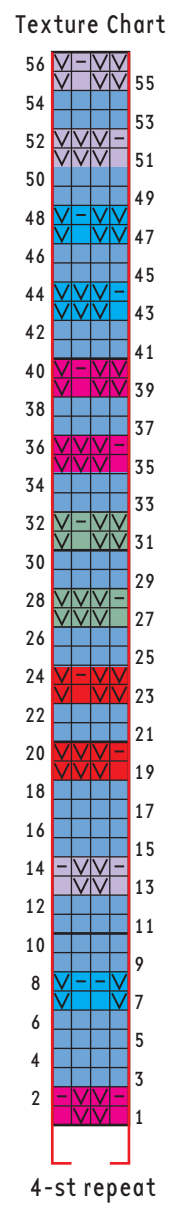
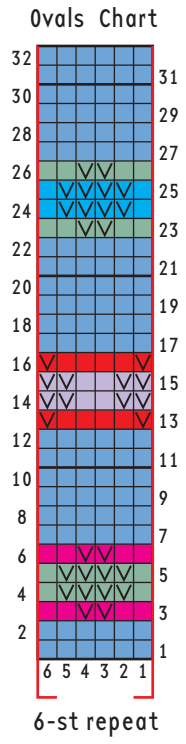


- Color MC
- Color A
- Color B
- Color C
- Color D
- Color E
- P on RS, K on WS
- Sl 1 wyib on RS, sl 1 wyif on WS



SET-UP ROW 2: Purl.

Beg row 1 with stitch #10 and ending with stitch #3, work 46 rows of Lattice Chart, dec 1 st each side on row 13 and every foll 16th row—72 (84, 96) sts.

Cont with decs as est, beg row 1 with stitch #1 and ending with stitch #6, work 30 (40, 50) rows of Squares Chart—70 (80, 90) sts.

Working 2 (2, 1) more decs as est, beg row 1 with stitch

#5 (6, 1) and ending with stitch #2 (1, 6), work 32 rows of Ovals Chart—66 (76, 88) sts.

ARMHOLE SHAPING

With MC, BO 3 (4, 6) sts at beg of next 2 rows—60 (68, 76) sts.

Work 24 rows of Texture Chart while dec 1 st each side every RS row 3 times, then every 4th row 4 times—46 (54, 62) sts.