

DESIGN YOUR OWN AFFIRMATION TREASURE CHEST



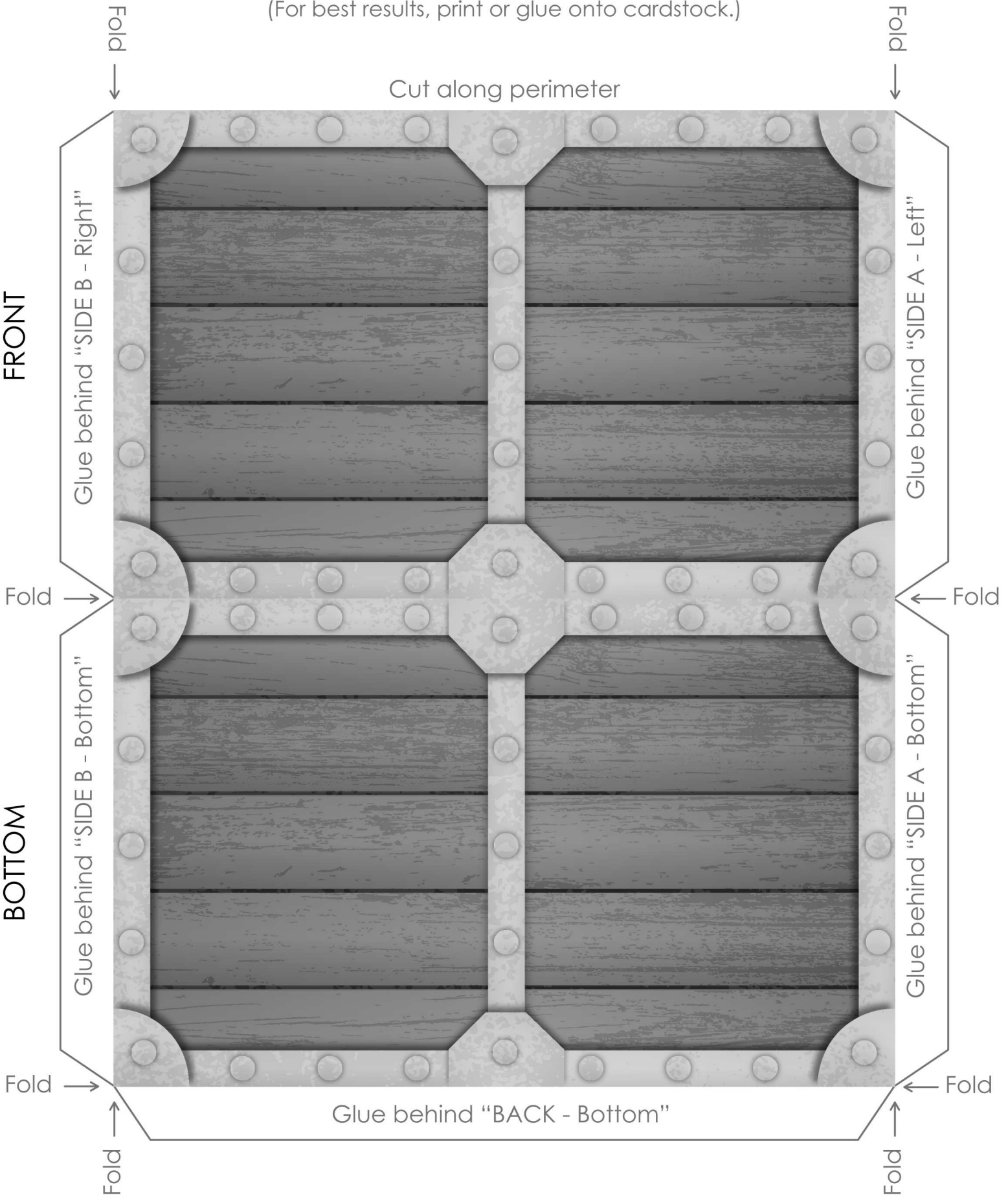
DESIGN YOUR OWN AFFIRMATION TREASURE CHEST

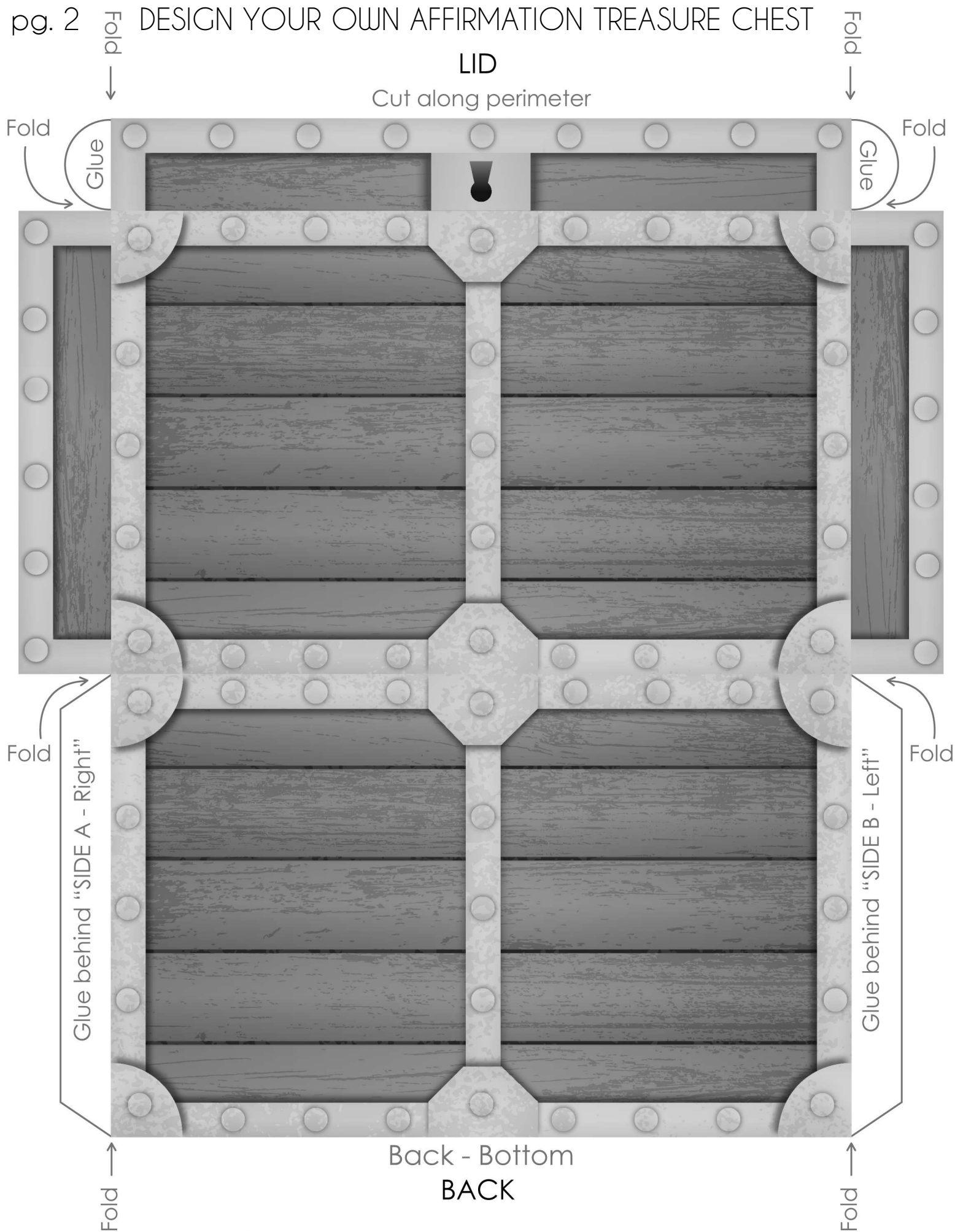
Instructions:

1. Cut out all the pieces of the treasure chest and the gems
2. Decorate the treasure chest and one side of each of the gems
3. Write "I am" on the lid on the treasure chest.
4. Glue the treasure chest together
5. Write "I am" affirmations on the blank side of each gem
(examples: wise, compassionate, honest, enough, loving)
6. Each morning take out the gems and recite the affirmations

DESIGN YOUR OWN AFFIRMATION TREASURE CHEST

(For best results, print or glue onto cardstock.)

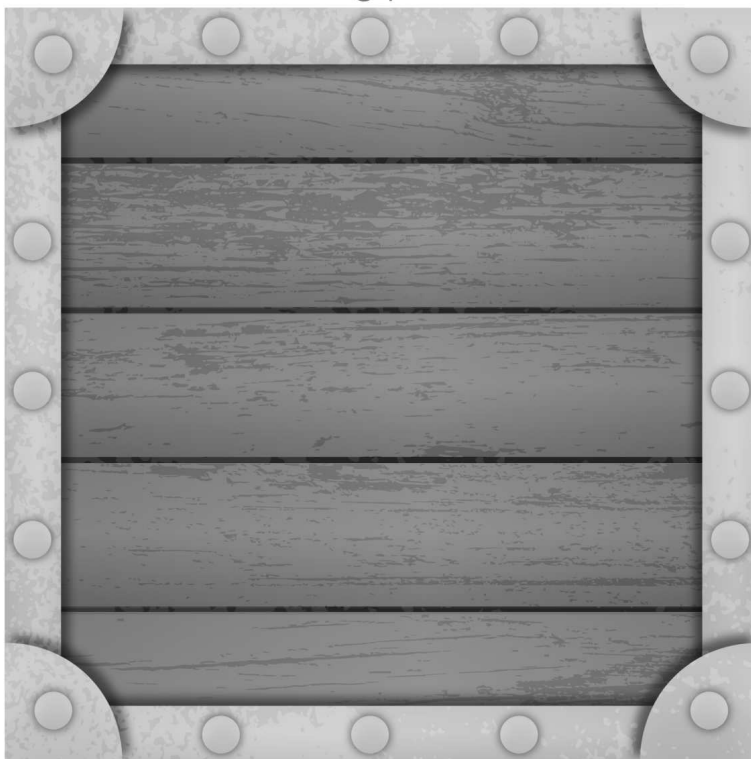




SIDE A

Cut along perimeter

SIDE A - Left



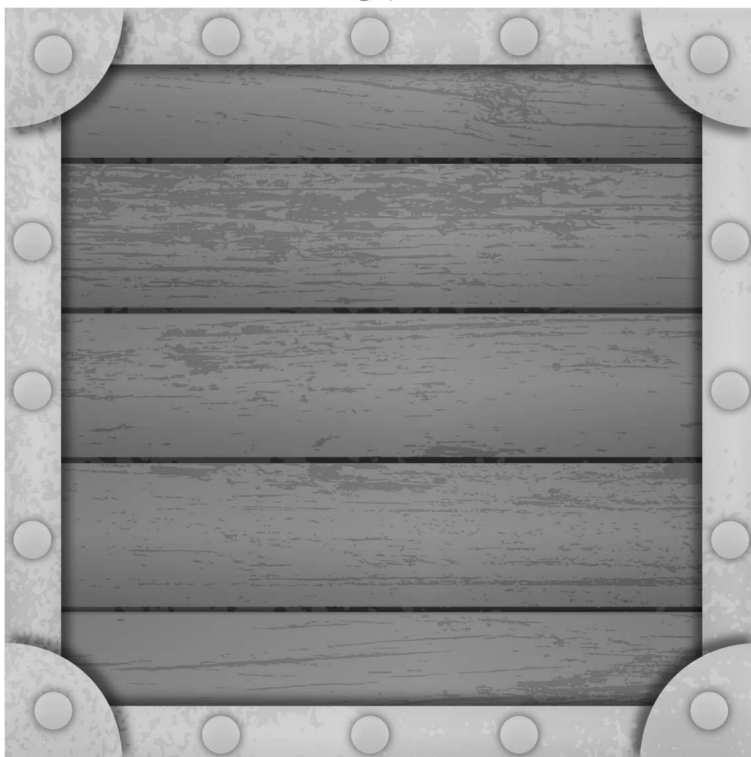
SIDE A - Right

SIDE A - Bottom

SIDE B

Cut along perimeter

SIDE B - Left



SIDE B - Right

SIDE B - Bottom

