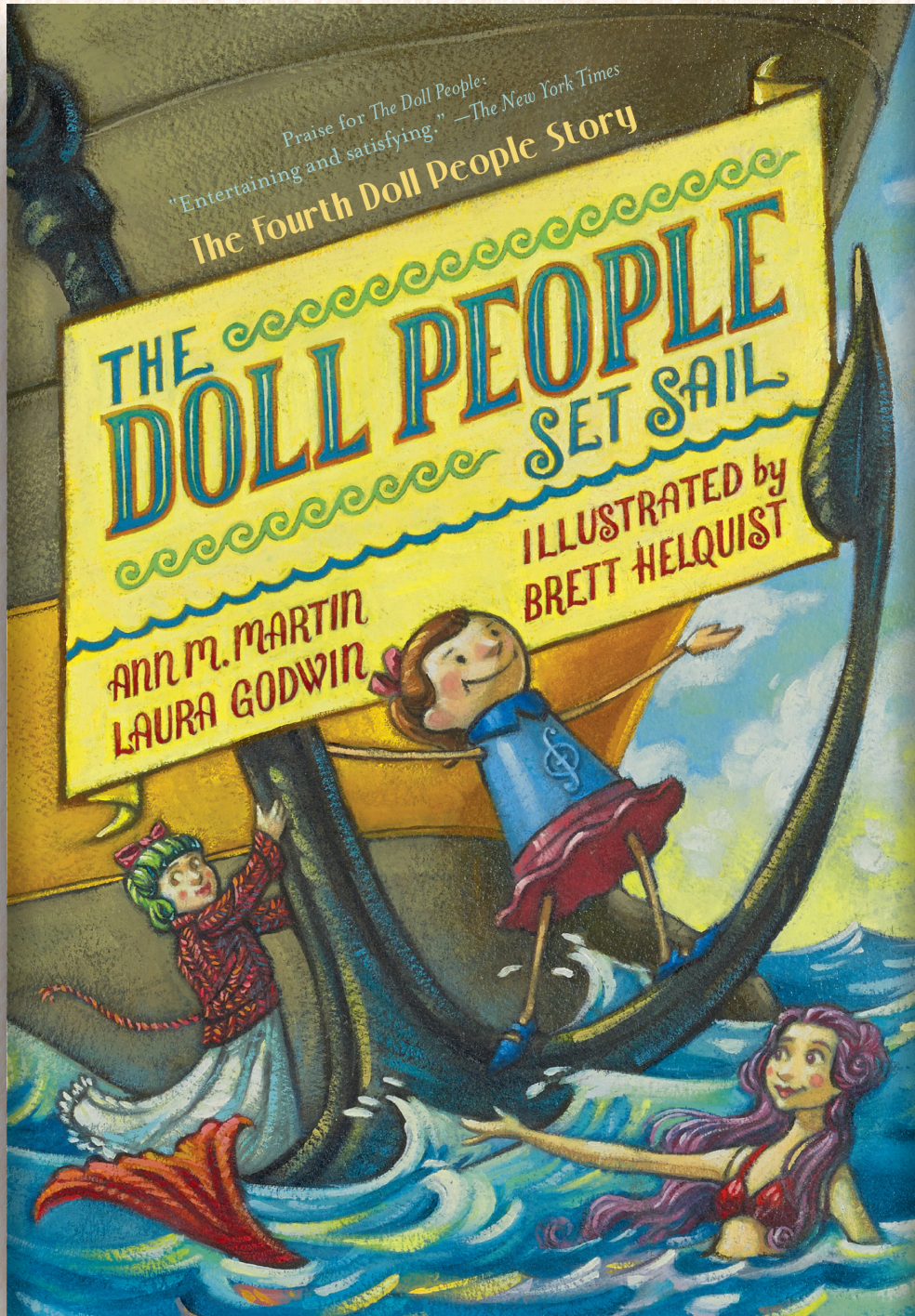
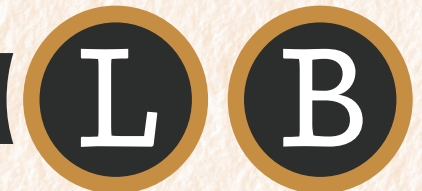


LITTLE, BROWN AND COMPANY BOOKS FOR YOUNG READERS

# Educator's Guide | Ages 8–12



LittleBrownLibrary.com



 lbschool  LittleBrownSchool

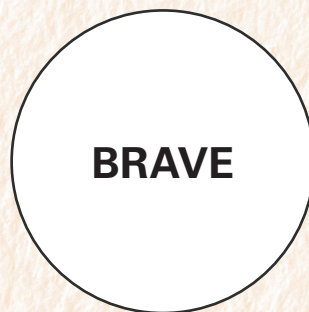
### PRE-READING: ACTIVATING PRIOR KNOWLEDGE

Have you ever traveled on a ship with your family? If yes, did you enjoy your journey? Why or why not? Have you traveled with your family on other modes of transportation? Write an essay that explains why you do or do not like traveling on a ship, train, bus, or other form of transit. You should begin by clearly stating your opinion, supporting your stance with related details, and ending with an aligned conclusion.

Freighter ships are designed to withstand long journeys across the ocean. To ensure that ships are safe, crew members must manage many parts of the large vessel. Using online resources and texts, research the parts of a freighter ship and the roles of crew members. After you complete your research, write a key that includes the name of each crew member and a definition of his or her job. Then, draw a ship and label the parts of the vessel. As you read the story, add new labels, crew members, and details to your key and illustration. Be sure to cite your research sources.

### DISCUSSION QUESTIONS

1. Annabelle often feels that she is less brave than Tiffany. In chapter one, the authors tell us that, "Tiffany could afford to be adventurous and brave. Unlike Annabelle, she was made entirely of plastic, so she was both unbreakable and washable" (p.3). How does Annabelle's perception of her own braveness change throughout the book? What events cause her perceptions to change? Compare Tiffany with Annabelle; how do they each demonstrate braveness in similar and different manners? Provide examples from the text.
  - ◆ **MAKING CONNECTIONS:** The word web below has the term brave in the center. Place the words and people that you think of when you hear the term brave around the outside of the circle.



2. Sometimes we receive thoughtful gifts that we may or may not like. Have you ever received a gift you did not like? What did you do? Kate knits Annabelle a sweater. What does this gesture show us about Kate? How does Annabelle feel about the sweater? Later, the sweater also goes on an adventure; explain how the sweater becomes an important part of the story.

continued on next page . . .

## The Doll People Set Sail

3. The Society for Exploration and the Location of Missing Persons (SELMP) was founded by Tiffany and Annabelle. However, several new family and team members join the society on the ship. How does each character’s attitude differ during the SELMP meeting in chapter four? The reader sees the meeting from Annabelle’s perspective. How might the meeting be different from Papa Doll’s or Auntie Sarah’s perspective?
4. As the Dolls are on their rescue mission, Tiffany, Auntie Sarah, and Annabelle take a moment to look through a porthole at the Atlantic Ocean. Annabelle states, “It’s like magic.... It’s as big as the sky” (p.124). Explain what this simile means. How does it enhance our understanding of what she views outside the window?
5. Each doll on the ship is seeking or attempting to return to a special forever home. Use the graphic organizer below to insert the names of the dolls from the ship and the home that would be best for each. Some dolls may not say exactly where they want to live, but make an inference about the right home based on what you learned in the story. Be sure that your suggestions are supported by textual evidence.

Doll’s Name	Best Home for the Doll (Explain Why)

6. Many of the illustrations throughout the story enhance our understanding of events. Look through the novel and select your favorite drawing. Explain how the illustration helps readers understand an event or character. Support your answer with a paragraph or quote from the story.
7. Do you believe switching Dad Funcraft for Otto and Johnny is a good idea? Why or why not? How could this action impact dollkind? What are the potential consequences of exposing dollkind to humans? Provide examples from the story.
8. The events in each chapter of the story build upon one another. Using the table of contents as a guide, explain how each chapter of the story fits together to describe a fantastic adventure. Be sure to use specific examples to support your explanation.
9. How does each character in the story respond to the challenges presented? What do the dolls learn from each challenge? What theme (or message) do you believe the authors are trying to convey through the characters and events? Have you read another story with a similar theme? Explain how the topics or events are similar.
10. This was the fourth adventure that the Doll and Funcraft families have experienced. What adventure do you think the Doll and Funcraft families should go on next? Why? Specifically, what meaningful lesson would the families learn from your adventure? Support your response with details about each family from the novels.

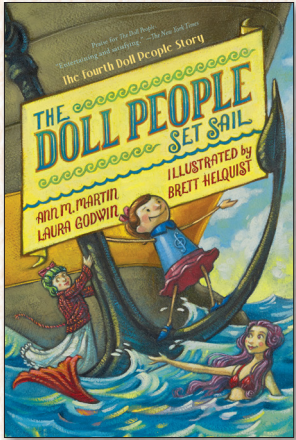
continued on next page . . .

## CLASSROOM CONNECTIONS: VOCABULARY ENHANCEMENT

Individual Word Wall: When we are reading new novels, we often come across unfamiliar words. It is important that we use our context clues to figure out the challenging terms. While reading the novels, keep track of the new vocabulary words as you encounter them in the text. On the graphic organizer below, include the word, the sentence from the novel with the term, familiar word parts, and your personal definition. As your word wall grows, you will have a better understanding of challenging vocabulary words to improve your comprehension, fluency, and writing. (*Reading: Foundational Skills: Phonics and Word Recognition: RFS.4.3; RFS.5.3*)

New Word	Sentences from Novel with the Word (Page #)	Familiar Word Parts (Prefixes, Root, Suffixes)	My Definition

## About the Book

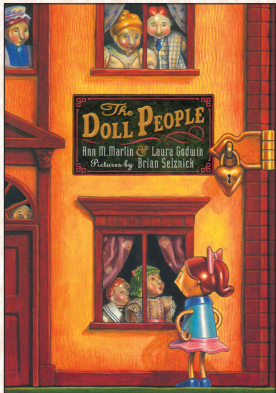


PB: 9781423139980

In the fourth book of the series, the Doll and Funcraft families end up in the middle of the sea when they are accidentally placed in a charity box. To make matters worse, the trip onto the boat is quite rocky, and a few of the family members are lost as they board the ship. Annabelle and Tiffany enlist their remaining family and new friends to join the Society for Exploration and the Location of Missing Persons (SELMP). During their subsequent

search mission, the dolls learn new things about themselves and the world around them. The question remains: after traveling thousands of miles across the sea, will they all make their way home?

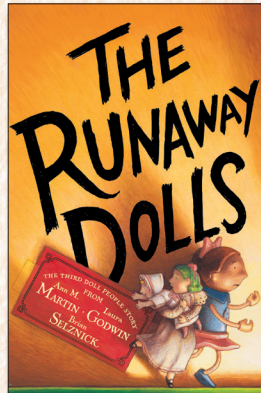
## Read All About The Dolls!



PB: 9780786812400



PB: 9780786852970



PB: 9780786855858

## About the Authors



**Ann M. Martin** is the bestselling author of the momentous Baby-Sitters Club series as well as the Main Street series. Her other acclaimed novels include *A Dog's Life*, *Belle Teal*, *Rain Reign*, and the Newbery Honor Book *A Corner of the Universe*. She lives in upstate New York.



**Laura Godwin** lives and works in New York City but grew up in Alberta, Canada. She has written many well-loved books for children, including *Owl Sees Owl*, *Christmas in the Manger*, *This Is the Construction Worker*, and *Oh, Cats!*

## About the Illustrator



**Brett Helquist** is the artist behind the iconic covers and illustrations of the books in the *New York Times* bestselling *A Series of Unfortunate Events* by Lemony Snicket. He has also illustrated well-loved children's books by Neil Gaiman, Alan Gratz, and Blue Balliett, among others. Brett majored in illustration at Brigham Young University and now lives with his family in Brooklyn, New York.