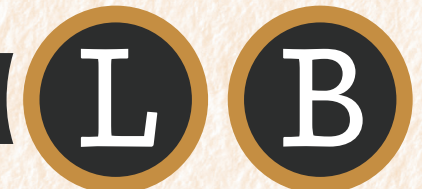


LITTLE, BROWN AND COMPANY BOOKS FOR YOUNG READERS

Educator's Guide | Ages 8–12



LittleBrownLibrary.com



Twitter icon | [lbschool](#) Facebook icon | [LittleBrownSchool](#)

PRE-READING: ACTIVATING PRIOR KNOWLEDGE

- What does it mean to bully someone? Was there ever a time that you encountered a bully? What happened? How did that person make you feel? Why shouldn't people bully others? Write an essay that explains why you believe bullying is wrong, support your opinion with clear examples, and conclude with solutions that schools should use to prevent bullying.
- In the story, Auntie Sarah, Annabelle, and Tiffany discuss extraordinary women (Amelia Earhart, Harriet Tubman, etc.). Select any woman who you believe changed history through her contributions to society. Use online resources and texts to learn about her life, accomplishments, and challenges. Provide a five-minute oral report about the woman you studied. Include relevant facts and descriptive details, and use a clear tone while presenting.

DISCUSSION QUESTIONS

- Annabelle tells Auntie Sarah, "If there were doll history books...you'd be in the chapter about amazing women" (p. 25). Why does Annabelle believe that Auntie Sarah is amazing? What makes her like famous women in history? Provide evidence from the story to support your answer.
- Kate's school motto is "Friendship, respect, trust, responsibility, kindness—We are proud of our school" (p.54). Why is this a good motto for a school? Why does Ms. Feldman refer to the motto when she is speaking with Francine? How is this motto related to the theme of the book? Throughout the story, when are the characters actions aligned to the motto? Provide examples from the text in your response.

EXTENSION ACTIVITY

After reading Chapters Four and Five, discuss the importance of a school motto. Include events from the text in your discussion. If you had to create a school motto, what would it be? In pairs, design a motto and clearly explain why a school would benefit from using the phrase.

- Illustrations often add meaning to a story by enhancing the reader's understanding of the events and characters. Take a look at the following pictures:
 - ♦ On pages 44 and 45, Annabelle and Tiffany are shown visiting Kate's school. What does this image tell us about Kate's classroom? How does it add to our understanding of what is happening in this chapter? How is Kate's classroom similar to or different from your classroom?
 - ♦ When you complete the story, look at the final illustration in the novel (after *the end*). Why do you believe the author and illustrator decided to include this picture? What can we learn from the drawing? Which characters remained friends? Which characters are missing? Why? Provide details from the story to support your response.
- Annabelle and Tiffany meet many new dolls in BJ's room and quickly learn about Mean Mimi. Which dolls are fighting against Mean Mimi? Which dolls are under Mean Mimi's control? What do the dolls in each category have in common? How are they different? How does each character respond to Mean Mimi's bullying? Use the organizer below to list the dolls and their responses.

continued on next page . . .

The Meanest Doll in the World

Dolls Mimi Controls	Response to Bullying	Mimi's Old Friends	Response to Bullying

- When Mimi introduces herself to the Dolls and Funcrafts, she uses a line from *The Wizard of Oz*. She states that she is, "I am...Princess Mimi...the small and meek" (p. 165). How is this scene similar to the scene from *The Wizard of Oz*? Is Mimi similar to any of the characters in *The Wizard of Oz*?
 - ♦ Who? Why? Use examples from the novel to support your answer.
- Why do you believe Mean Mimi left her home? What makes Mean Mimi a bully? How is Mean Mimi similar to Francine in Kate's class? The Doll and Funcraft families brainstorm several solutions to deal with Mean Mimi. Do you believe any will work?
 - ♦ Why? Include examples from the story in your answer.
- Annabelle tells her family, "Why poke a stick in a hornet's nest?" (p.198). What does this figurative language actually mean? What is she trying to get her family to understand?
 - ♦ Why do you think everyone ignores Annabelle's suggestion? Provide examples from the text to support your response.
- Annabelle often compares herself to Tiffany during challenging situations. Think about both characters. How do they respond differently in scary moments, such as when dealing with Mean Mimi and spiders in the attic? Provide examples of each doll's thoughts, actions, and dialogue.

continued on next page . . .

The Meanest Doll in the World

- It is important to remember that the story is told from Annabelle's perspective. Consider the following:
 - ♦ If Mean Mimi were telling the story, what might she say? How would her story differ from Annabelle's account? Provide evidence from the text to support your answer.
 - ♦ After Mean Mimi goes into Permanent Doll State, Annabelle says, "You know what the sad thing is? No matter what happened to Mean Mimi, she probably thought she didn't deserve it" (pp. 253–554). Do you agree with this statement? Why or why not? Support your response with examples from the story.
- On the final page of the story, Annabelle reflects by stating, "Spiders are tenacious.... They start new webs, and work and work, and if the webs are damaged or destroyed, they simply repair them. I'm tenacious too" (p. 260). Why does Annabelle believe that she is tenacious? What actions throughout the story show that she is tenacious like a spider weaving a web?

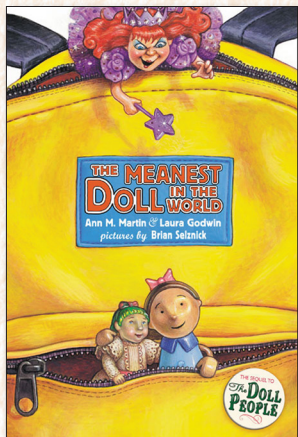
INDIVIDUAL WORD WALL

When we are reading new novels, we often come across unfamiliar words. It is important that we use our context clues to figure out the challenging terms. While reading the novels, keep track of the new vocabulary words as you encounter them in the text. On the graphic organizer below, include the word, the sentence from the novel with the term, familiar word parts, and your personal definition. As your word wall grows, you will have a better understanding of challenging vocabulary words to improve your comprehension, fluency, and writing.

New Word	Sentence from Novel with the Word (Page #)	Familiar Word Parts (Prefixes, Root, Suffixes)	My Definition

continued on next page . . .

About the Book

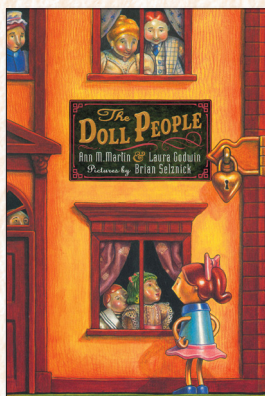


PB: 9780786852970

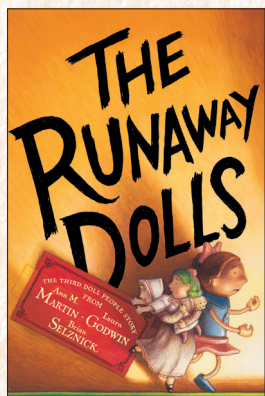
In the second installment of the beloved adventure series, best friends Annabelle Doll and Tiffany Funcraft hitch a ride in Kate's backpack and find themselves in the biggest adventure of their lives: a day at school! But when an attempt to return home lands them in the wrong house, they're in deep trouble. Mean Mimi, the wickedest doll of all, is determined to rule all of Dollkind or else destroy it. Will the world ever be safe for dolls again? The Doll and Funcraft

families must work together to figure out how to solve this new problem. In the end, they learn to never underestimate the power of new ideas and collaboration.

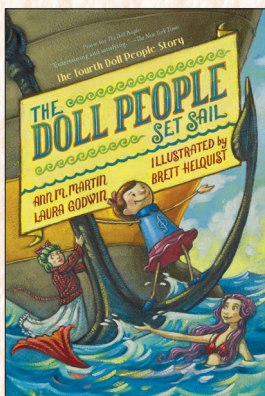
Read All About The Dolls!



HC: 9780786803613
PB: 9780786812400



PB: 9780786855858



PB: 9781423139980



About the Authors



Ann M. Martin is the bestselling author of the momentous Baby-Sitters Club series as well as the Main Street series. Her other acclaimed novels include *A Dog's Life*, *Belle Teal*, *Rain Reign*, and the Newbery Honor Book *A Corner of the Universe*. She lives in upstate New York.



Laura Godwin lives and works in New York City but grew up in Alberta, Canada. She has written many well-loved books for children, including *Owl Sees Owl*, *Christmas in the Manger*, *This Is the Construction Worker*, and *Oh, Cats!*

About the Illustrator



Brian Selznick is the author and illustrator of the *New York Times* bestselling *Invention of Hugo Cabret*, winner of the Caldecott Medal and a National Book Award nominee. He is also the author and illustrator of *Wonderstruck*, *The Marvels*, *Kaleidoscope*, and *Big Tree*, and he's illustrated many other books for children, including *Frindle* by Andrew Clements. Brian lives in Brooklyn and San Diego.